



Antenna commissioning report

Client: Doko

Project: Tab 9 WiFi

Structure: Xiao Xiang-13316888409

Radio frequency: Long Yaobin -

15874137313 Date: 2024-03-07



Report type:

Version Number: V4.0 (appearance)

Machine status: EVT trial production
machine (software version 20240113)

Commissioning band:

802.11 a/b/g/n/ac



Antenna commi ssi oning report

WIFI OTA					Leather sheath	
2.4G	Band	Channe 1	TRP	TIS	TRP	TIS
	b (11M)	1	13.9		13.2	
		6	13.7		12.4	
		13	14.2	-82.5	13.6	-83.2
	g (54M)	1	12.5		12.7	
		6	11.9		12.1	
		13	12.6	-69.2	12.2	-71.3
	n (MCS7)	1	12.4		12.5	
		6	11.9		12.1	
		13	12.4	-65.6	12.1	-66.9



Antenna commissioning report

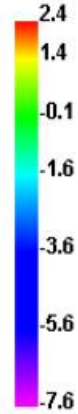
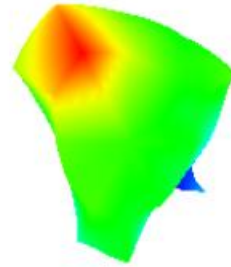
		WIFI OTA			Leather sheath	
5G	Band	Channel	TRP	TIS	TRP	TIS
	a (54M)	36	12.9		13.2	
		149	11.5		12.1	
		165	13.1	-69.2	13.1	-71.3
	n (MCS7)	36	11.8		12.1	
		149	12.1		11.8	
		165	12.6	-64.8	12.2	-66.1
	ac (MCS8)	36	12.1		12.3	
		149	12.2		11.9	
		161	12.6	-66.3	12.1	-67.2



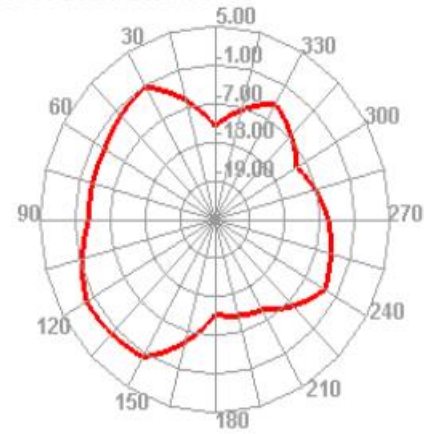
Antenna commi ssi oning report

Freq (MHz)	Effi (%)	Effi (dB)	Gain (dBi)	Freq (MHz)	Effi (%)	Effi (dB)	Gain (dBi)
2400	43.71	-3.59	2.07	5150	21.77	-6.04	-0.53
2410	48.35	-3.16	2.37	5210	25.33	-5.51	-1.25
2420	44.98	-3.47	2.07	5310	32.73	-4.85	1.66
2430	45.42	-3.43	1.95	5410	33.47	-4.75	2.24
2440	46.48	-3.33	2.02	5510	33.39	-4.76	1.19
2450	45.77	-3.39	1.85	5610	31.03	-5.08	0.66
2460	47.23	-3.26	2.15	5710	34	-4.69	1.54
2470	45.94	-3.38	2.16	5810	27.48	-5.61	0.3
2480	46.14	-3.36	2.28	5850	27.85	-5.55	0.25
2490	44.95	-3.47	2.26				
2500	44.34	-3.53	2.15				

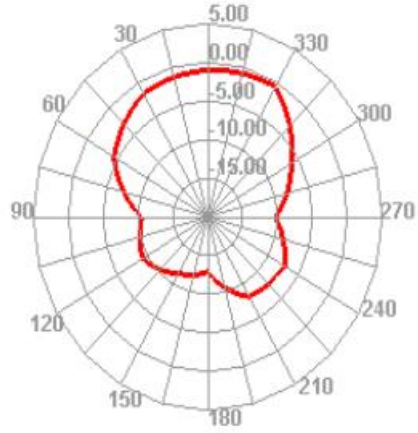
2410.000MHz



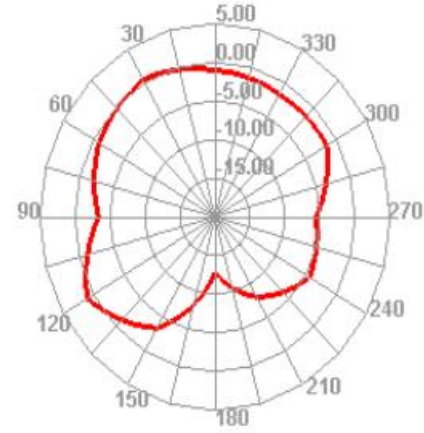
2410.000MHz H



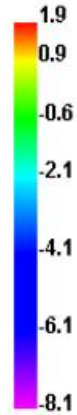
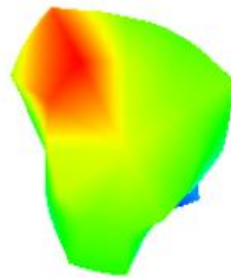
2410.000MHz E1



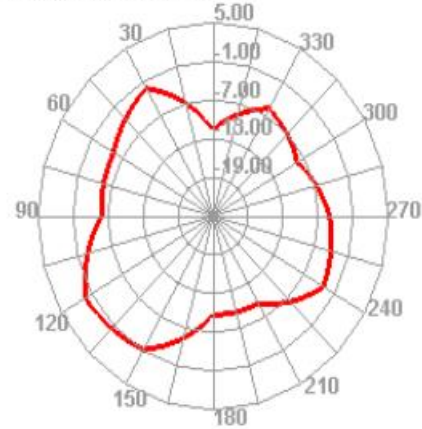
2410.000MHz E2



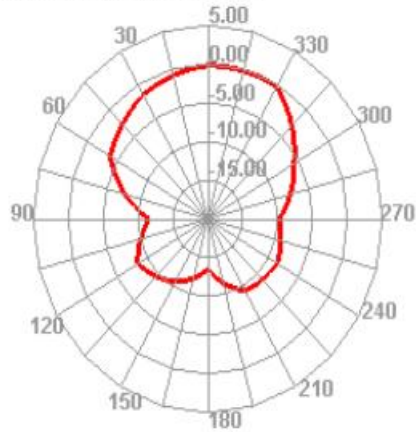
2450.000MHz



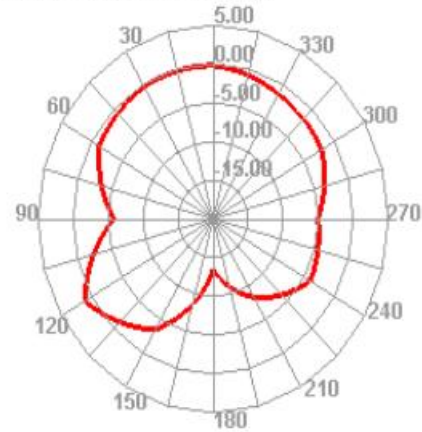
2450.000MHz H



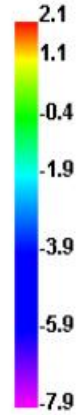
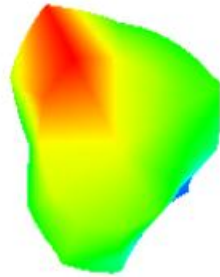
2450.000MHz E1



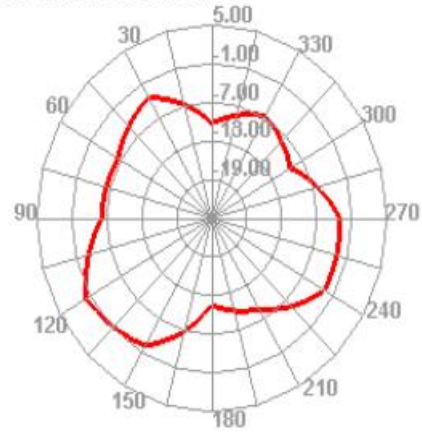
2450.000MHz E2



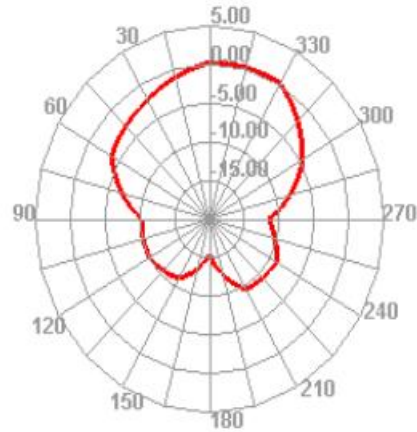
2500.000MHz



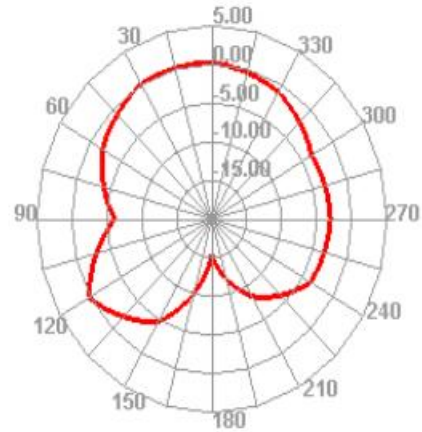
2500.000MHz H



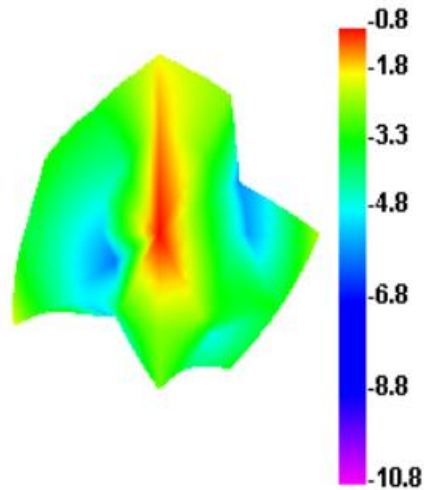
2500.000MHz E1



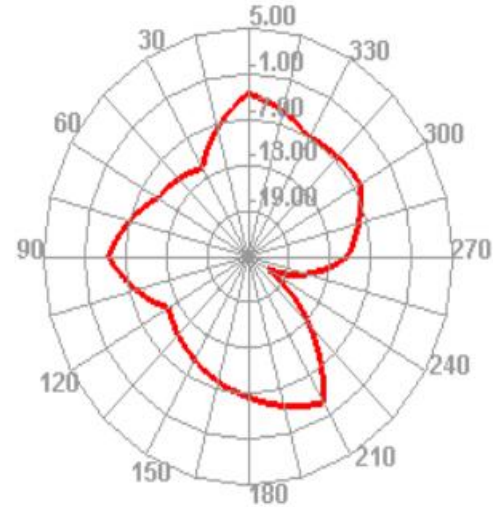
2500.000MHz E2



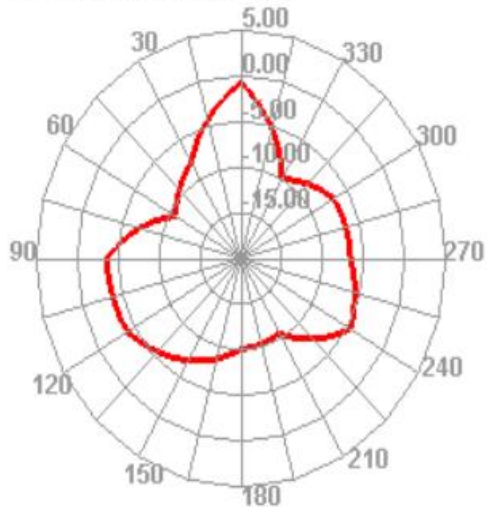
5170.000MHz



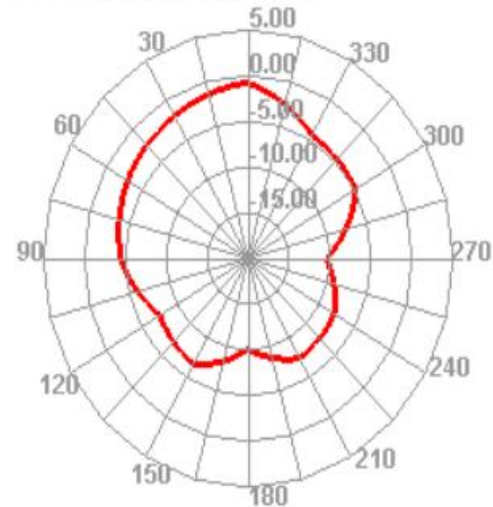
5170.000MHz H



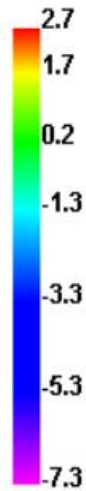
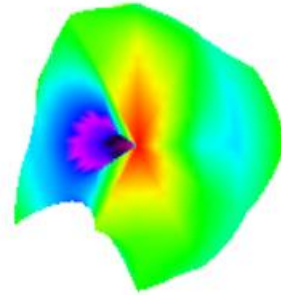
5170.000MHz E1



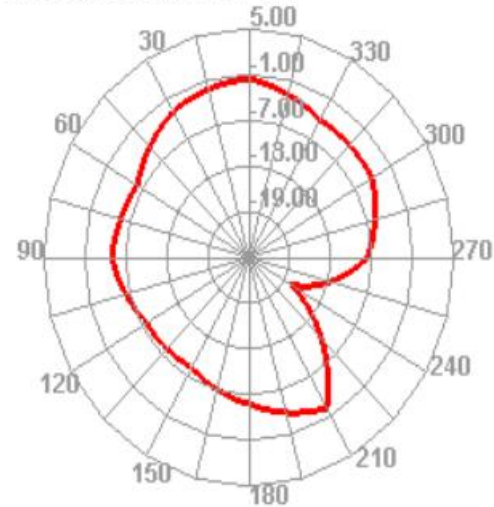
5170.000MHz E2



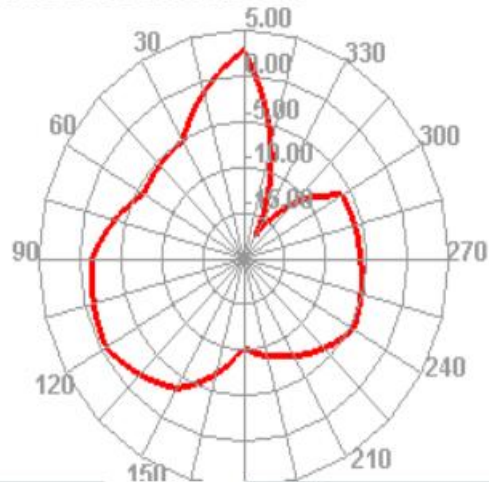
5430.000MHz



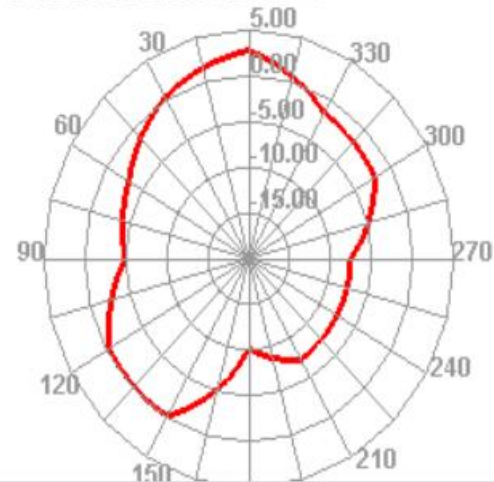
5430.000MHz H



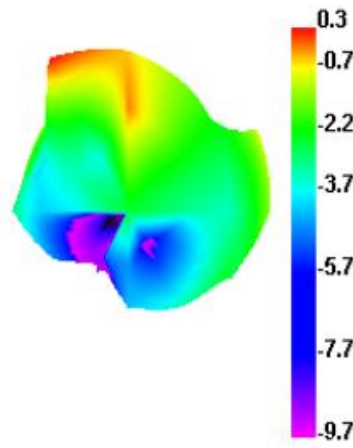
5430.000MHz E1



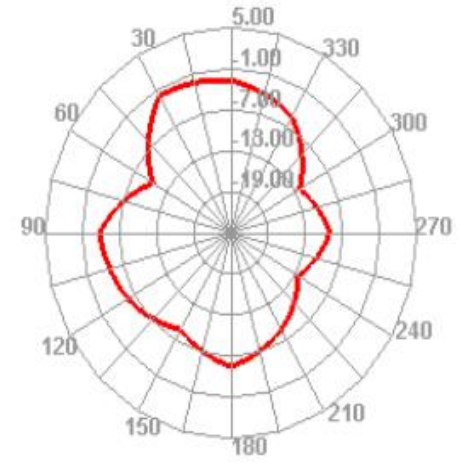
5430.000MHz E2



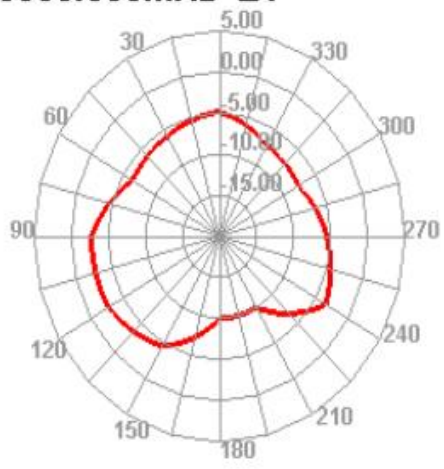
5850.000MHz



5850.000MHz H



5850.000MHz E1



5850.000MHz E2

