



TAB8wifi- Antenna Test Report

Date: 2023.04.04

CONTENTS

01

Project Overview

02

Test Environment

03

Matching Circuit

04

Environmental
Treatment

05

Passive Report

06

Active Report

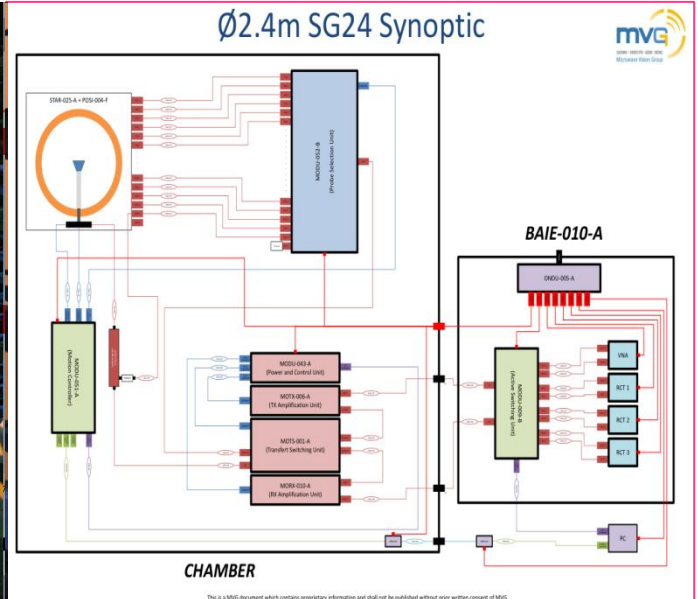
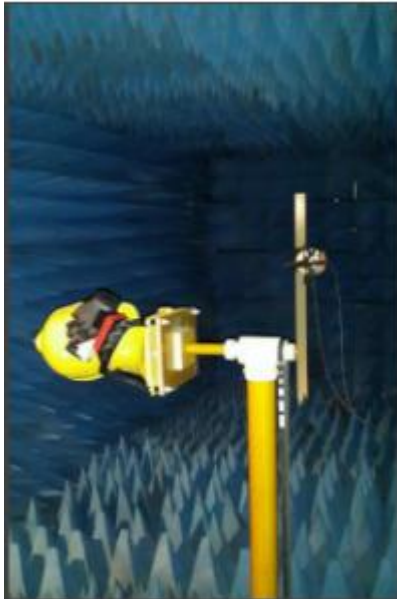
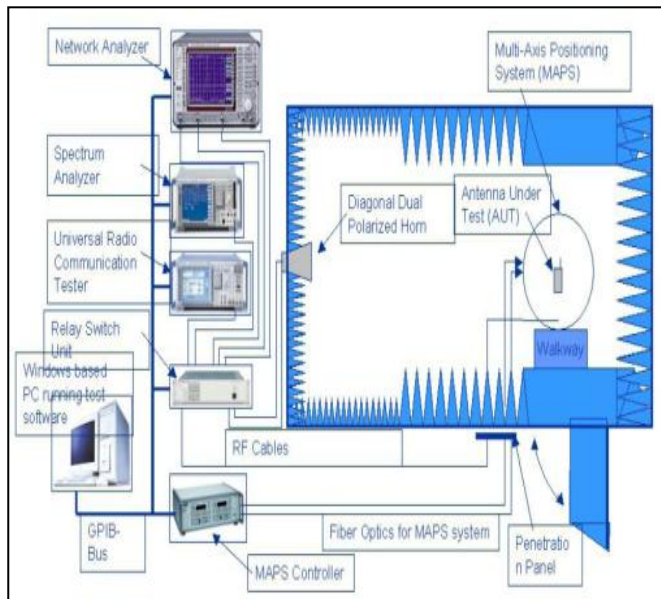
07

Conclusion



Main antenna design spectrum:	WIFI 2.4/5.8G	Repor version:	Date	Content
Type of antenna:	PIFA	V5.0	2023.04.04	Antenna test report

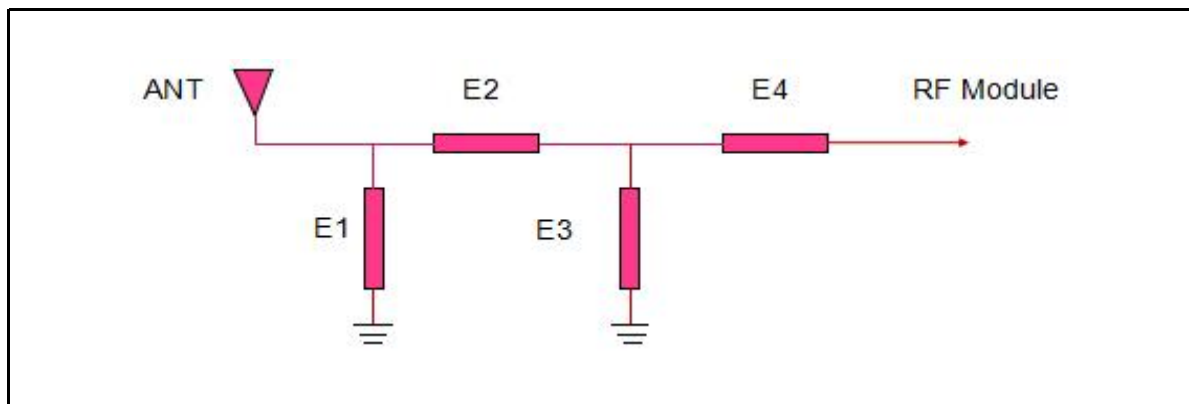
Test Environment



Darkroom system : MVG SG24LT (Satmio)

Matching Circuit

main antenna design	
Element	Value
E1(0201):	/
E2(0201):	/
E3(0201):	/



Note: The matching circuit has not changed.

Figure: The motherboard is grounded with a conductive sponge.

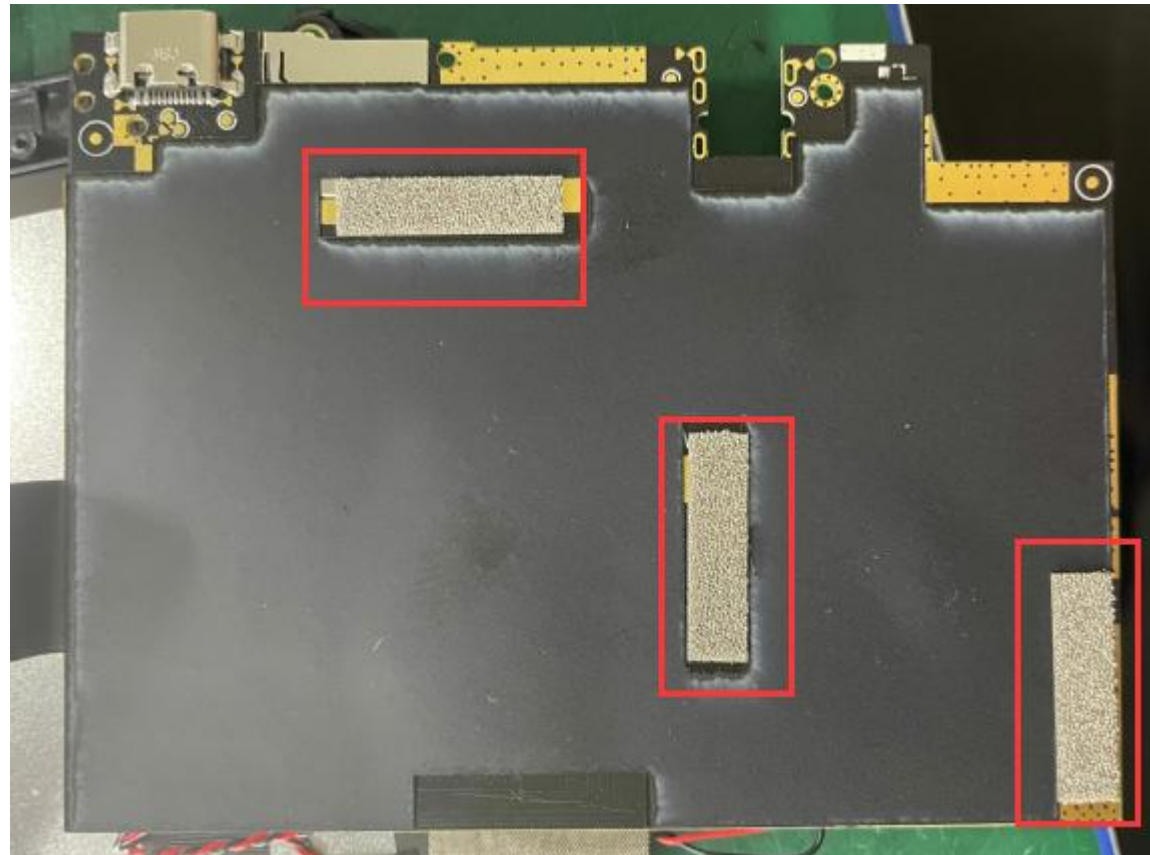
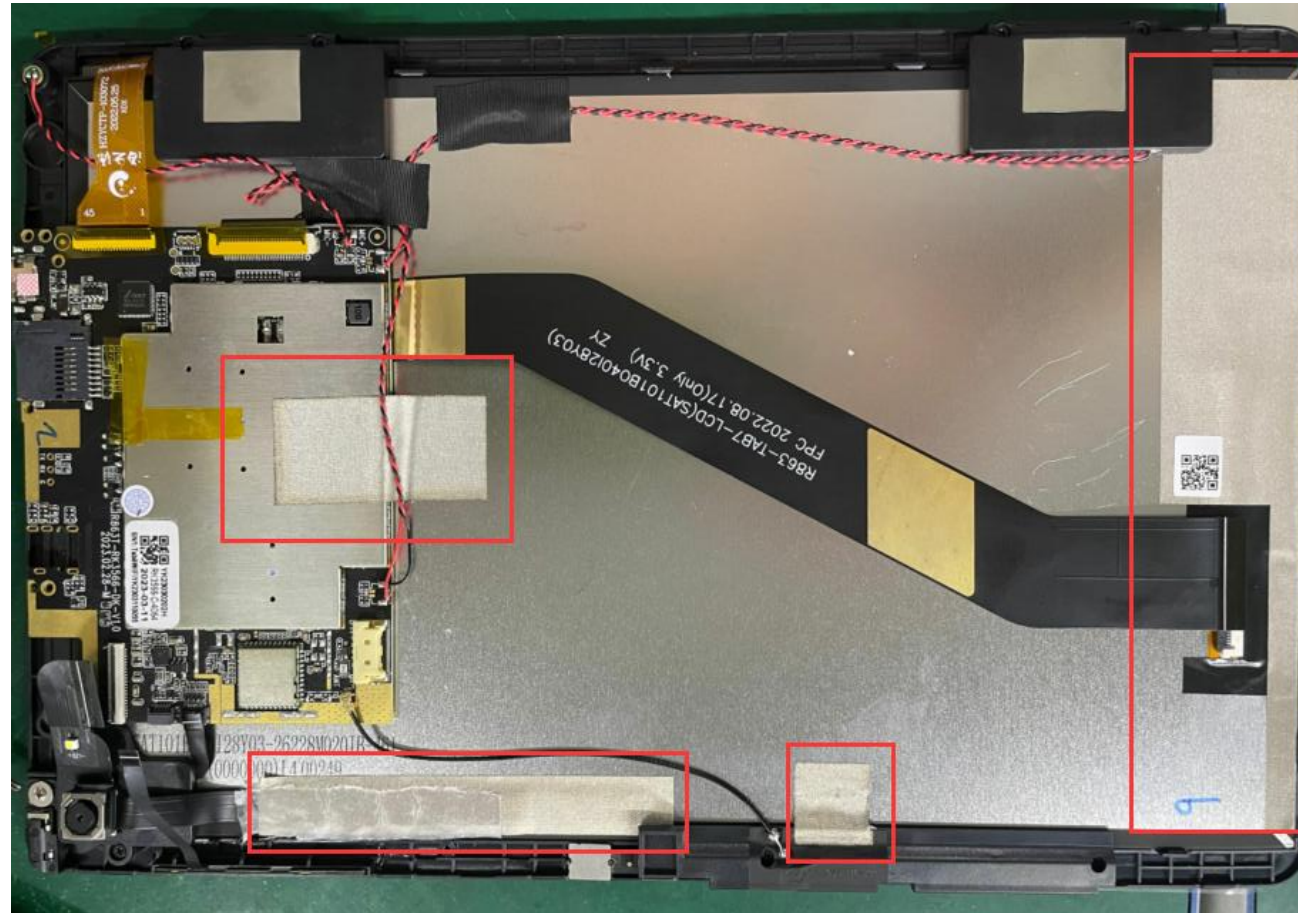


Figure: The red box is grounded with conductive cloth.





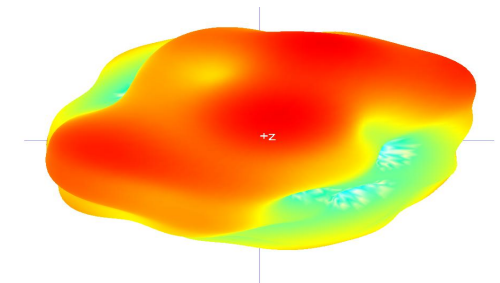
WiFi passive Efficiency, Gain

1			1		1			1	
Frequency	Efficiency	Efficiency . dB	Frequency	Gain . dB	Frequency	Efficiency	Efficiency . dB	Frequency	Gain . dB
5200000000	42.93%	-3.67287	5200000000	2.977131	2400000000	44.82%	-3.484984946	2400000000	2.874231459
5230000000	38.27%	-4.17186	5230000000	2.987121	2410000000	44.32%	-3.534478279	2410000000	2.954531211
5260000000	37.69%	-4.23748	5260000000	2.996506	2420000000	43.41%	-3.623923999	2420000000	3.004531210
5290000000	36.62%	-4.3634	5290000000	2.424153	2430000000	43.89%	-3.576201949	2430000000	2.942131213
5320000000	32.66%	-4.85925	5320000000	2.678045	2440000000	43.70%	-3.594853427	2440000000	2.756341287
5350000000	29.40%	-5.31707	5350000000	2.715533	2450000000	43.78%	-3.586833388	2450000000	2.984561243
5380000000	28.59%	-5.43732	5380000000	2.301797	2460000000	44.56%	-3.510249255	2460000000	2.012786124
5410000000	30.76%	-5.1206	5410000000	2.225649	2470000000	45.56%	-3.414411472	2470000000	2.994212731
5440000000	33.89%	-4.6996	5440000000	2.513064	2480000000	45.52%	-3.417612236	2480000000	2.986329883
5470000000	31.72%	-4.98645	5470000000	2.321311	2490000000	45.93%	-3.378598412	2490000000	2.1472105134
5500000000	34.13%	-4.6685	5500000000	2.741788	2500000000	47.31%	-3.250416025	2500000000	2.9754341236
5530000000	34.55%	-4.61585	5530000000	2.91396					
5560000000	33.75%	-4.71698	5560000000	3.016482					
5590000000	30.10%	-5.21435	5590000000	2.685767					
5620000000	26.97%	-5.69189	5620000000	2.137515					
5650000000	26.08%	-5.83653	5650000000	1.87917					
5680000000	26.26%	-5.80681	5680000000	1.631634					
5710000000	25.48%	-5.93738	5710000000	1.164549					
5740000000	26.77%	-5.72383	5740000000	1.003139					
5770000000	29.62%	-5.28403	5770000000	2.986852					
5800000000	30.21%	-5.19899	5800000000	1.009535					

Measuring instrument : Agilent Technologies E5071B 300kHz-8.5GHz ENA Series Network Analyzer Darkroom system : MVG SG24LT (Satmio)



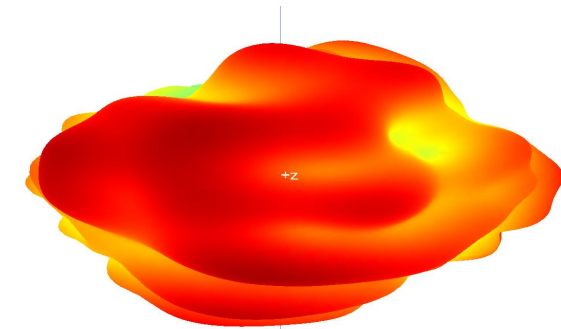
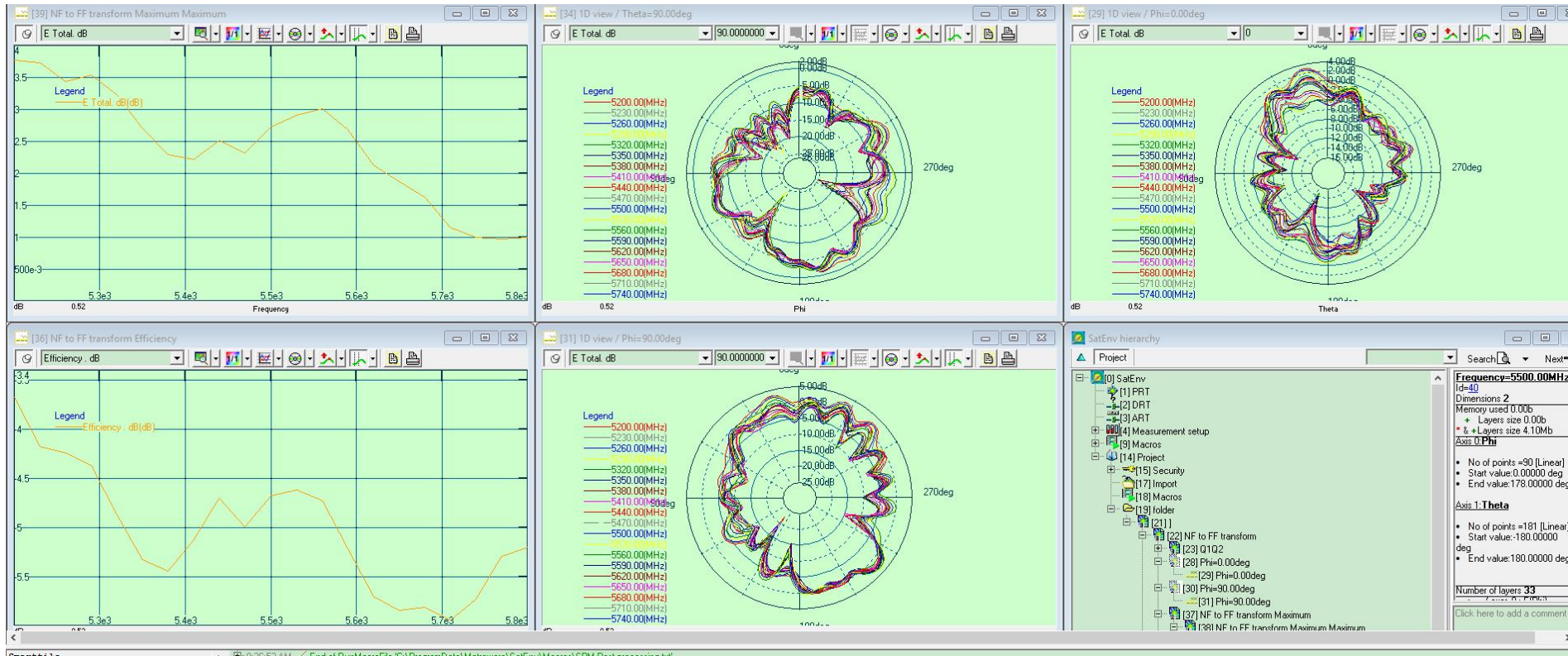
2.4G Passive pattern



Measuring instrument : Agilent Technologies E5071B 300kHz-8.5GHz ENA Series Network Analyzer Darkroom system : MVG SG24LT (Satmio)



5.8G Passive pattern



Measuring instrument : Agilent Technologies E5071B 300kHz-8.5GHz ENA Series Network Analyzer Darkroom system : MVG SG24LT (Satmio)



OTA

3D	BAND	WiFi_B			WiFi_G		
	CHANNAL	L	M	H	L	M	H
	TRP	16.27	16.52	16.62	13.37	13.52	13.57
	TIS			-82.57			-70.04
	BAND	WiFi_N					
	CHANNAL	L	M	H			
	TRP	13.32	13.41	13.47			
	TIS			-66.24			




OTA

3D	BAND	WiFi_A			WiFi_N		
	CHANNAL	L	M	H	L	M	H
	TRP	15.46	15.41	15.21	13.32	13.42	13.47
	TIS			-70.42			-65.43
	BAND	WiFi_AC			WiFi_AX		
	CHANNAL	L	M	H	L	M	H
	TRP	13.21	13.37	13.34	13.57	13.52	13.64
	TIS			-65.05			-65.32

1. This report is the sample antenna test results .
2. If you have any questions, please call.

THANK YOU

If you have any questions, please contact us
Daily service hours : Monday to Saturday 9:00-18:00
Switchboard Hotline : 0755-36615535 Fax: 0755-82916227
 website : www.mayaant.com

Confidentiality requirements

Shenzhen Maya communication equipment Co., Ltd. has owned the information provided by the proprietary technology and is not allowed to disclose it to any person or company without the prior written consent of Shenzhen Maya communication equipment Co., Ltd.