



# DK 072- Antenna Test Report

**Date: 2023.12.15**

# CONTENTS

**01**

Project Overview

**02**

Test Environment

**03**

Matching Circuit

**04**

Environmental  
Treatment

**05**

Passive Report

**06**

Active Report

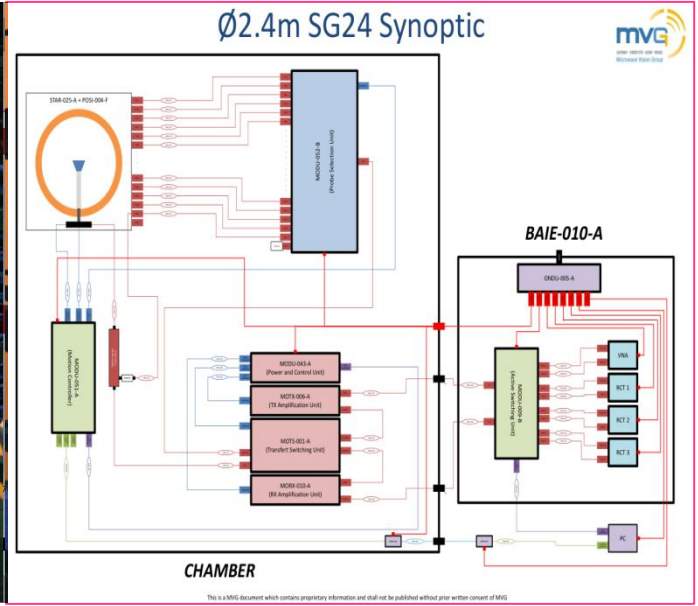
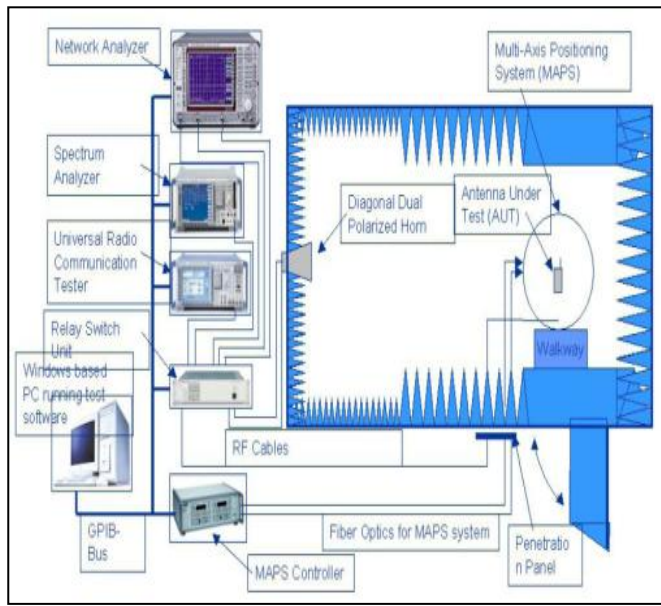
**07**

Conclusion



Antenna design spectrum:	WIFI 2.4/5.8G	Repor version:	Date	Content
Type of antenna:	PIFA	V1.0	2023.12.18	Antenna test report

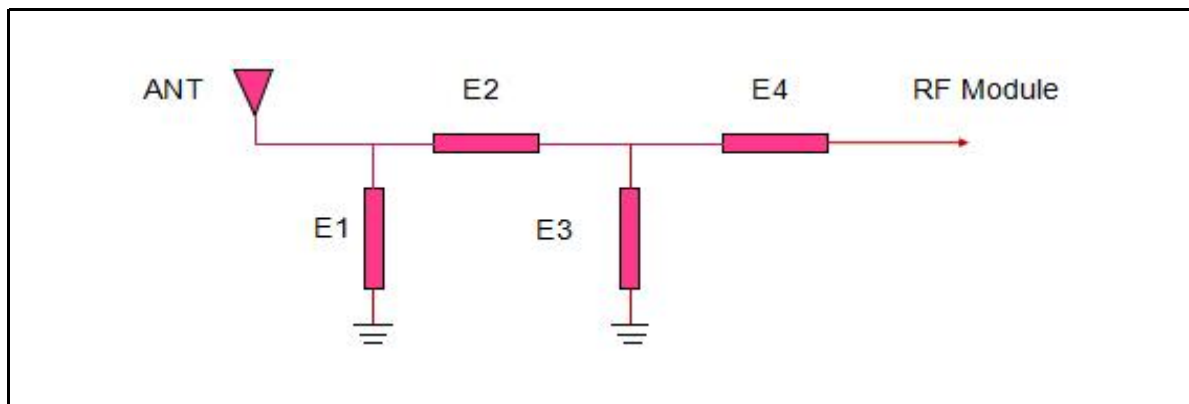
# Test Environment



Darkroom system : MVG SG24LT (Satmio)

# Matching Circuit

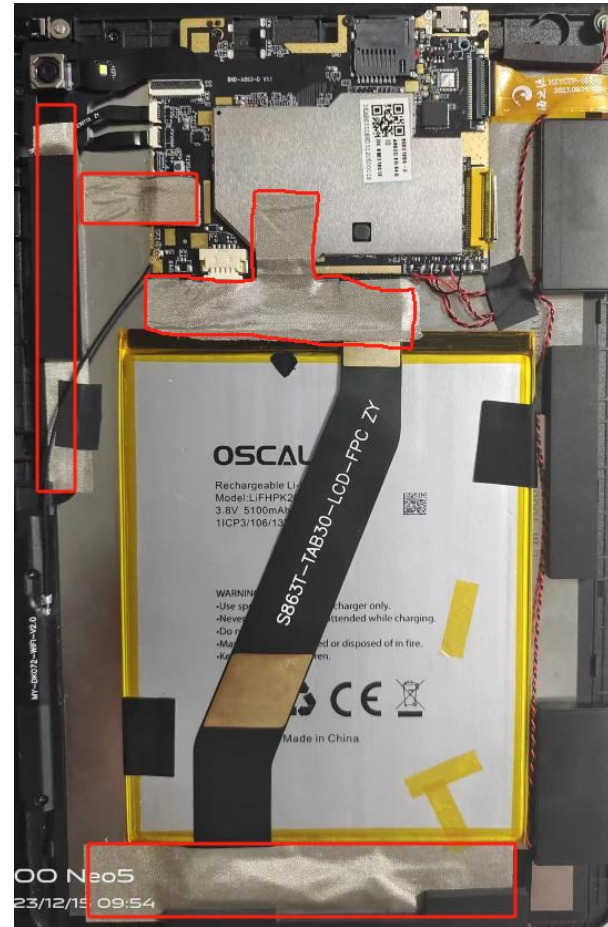
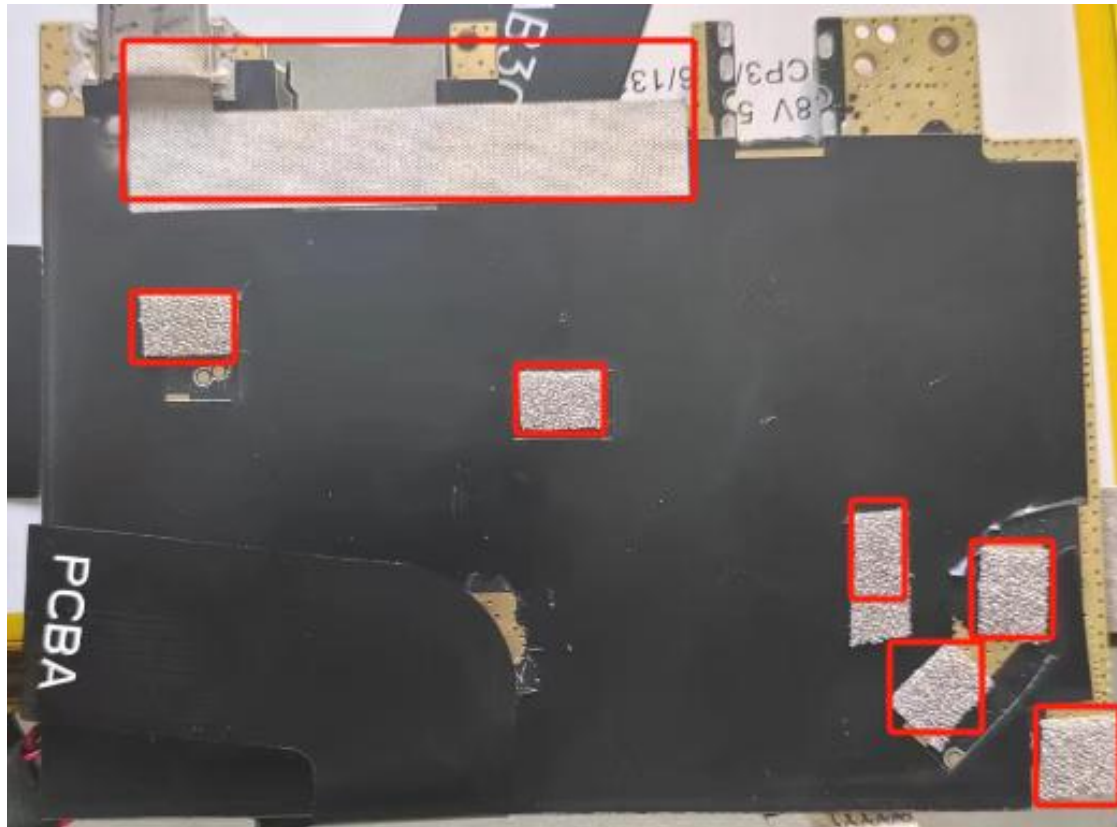
main antenna design	
Element	Value
E1(0201):	/
E2(0201):	/
E3(0201):	/



Note: The matching circuit has not changed.

# Environmental treatment

Figure: The red box is grounded with conductive cloth.





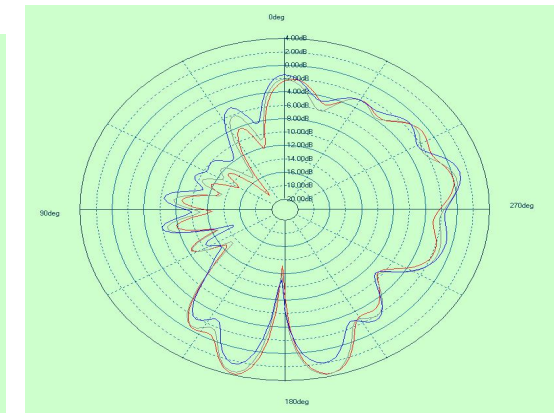
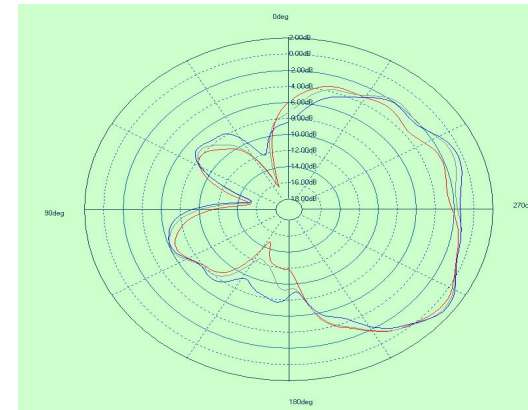
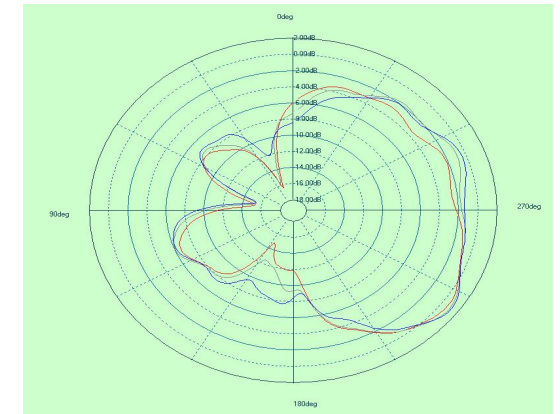
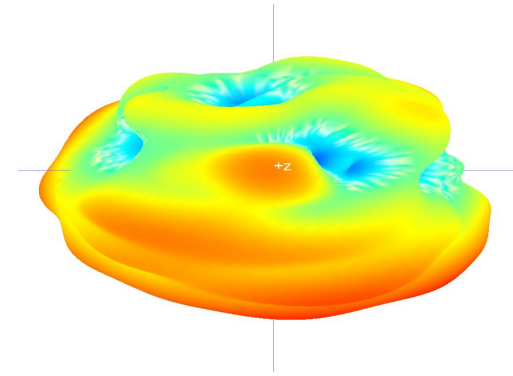
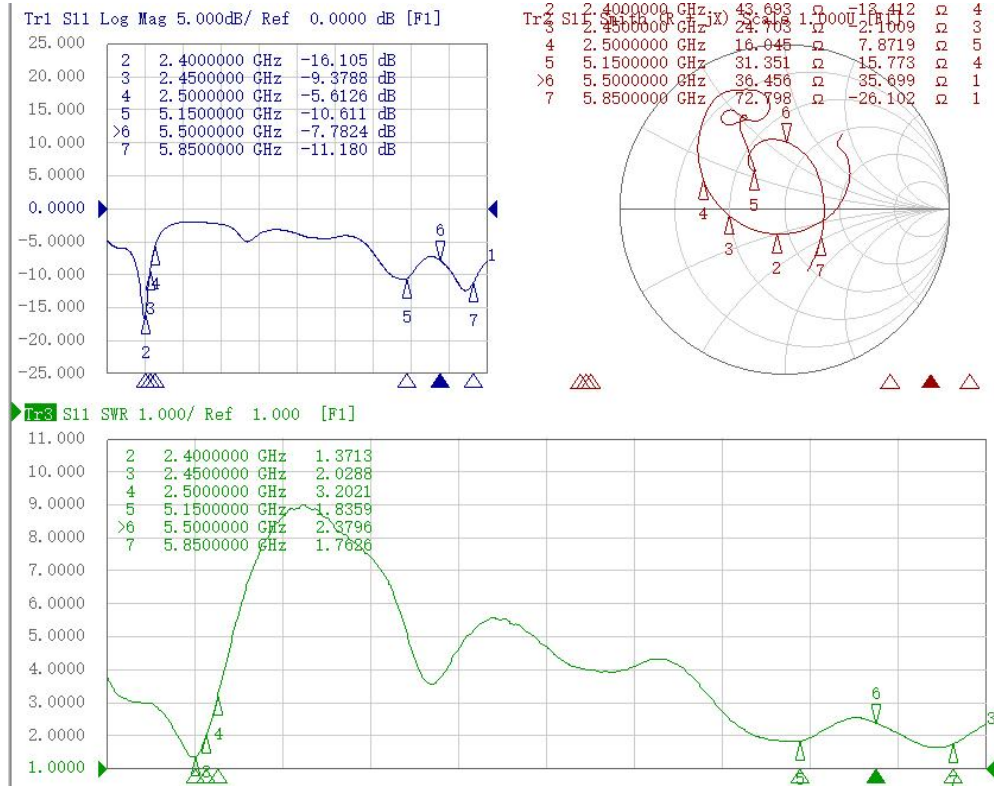
## WiFi passive Efficiency, Gain

Frequency	Efficiency	Efficiency.dB	Gain.dB	Frequency	Efficiency	Efficiency.dB	Gain.dB
2400	44%	-3.60	5.06	5150	54%	-2.69	5.17
2410	43%	-3.64	4.99	5200	64%	-1.93	5.17
2420	44%	-3.59	5.11	5250	63%	-2.03	5.03
2430	45%	-3.44	5.04	5300	57%	-2.46	5.02
2440	44%	-3.56	4.72	5350	52%	-2.88	5.39
2450	44%	-3.60	4.63	5400	55%	-2.59	5.77
2460	45%	-3.47	4.41	5450	60%	-2.21	5.45
2470	45%	-3.44	3.91	5500	58%	-2.37	4.77
2480	43%	-3.63	3.44	5550	53%	-2.74	3.97
2490	42%	-3.75	3.32	5600	53%	-2.80	4.64
2500	42%	-3.74	3.07	5650	47%	-3.31	4.75
				5700	44%	-3.54	4.59
				5750	48%	-3.18	4.26
				5800	52%	-2.83	3.98
				5850	49%	-3.06	3.76

Measuring instrument : Agilent Technologies E5071B 300kHz-8.5GHz ENA Series Network Analyzer Darkroom system : MVG SG24LT (Satmio)



## 2.4G Passive pattern

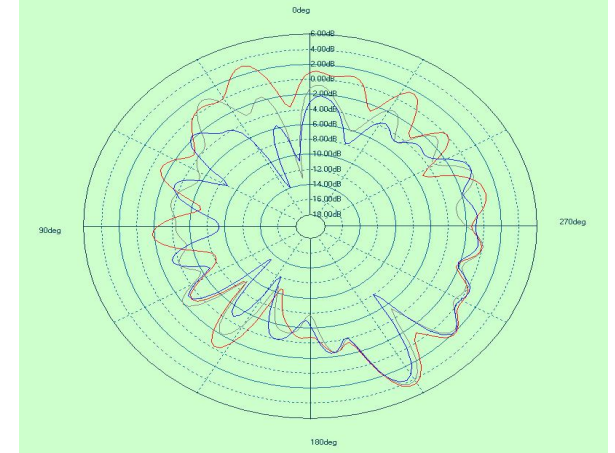
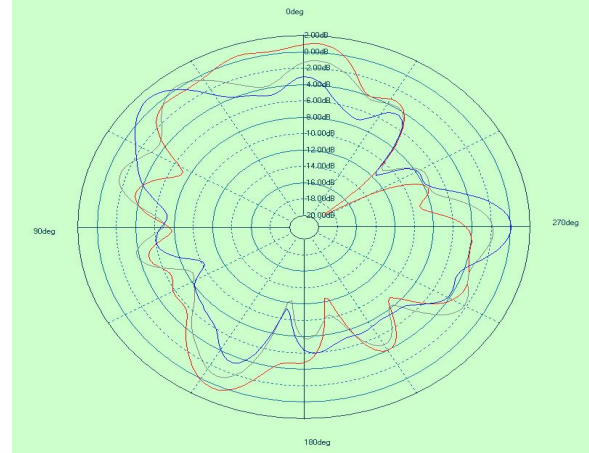
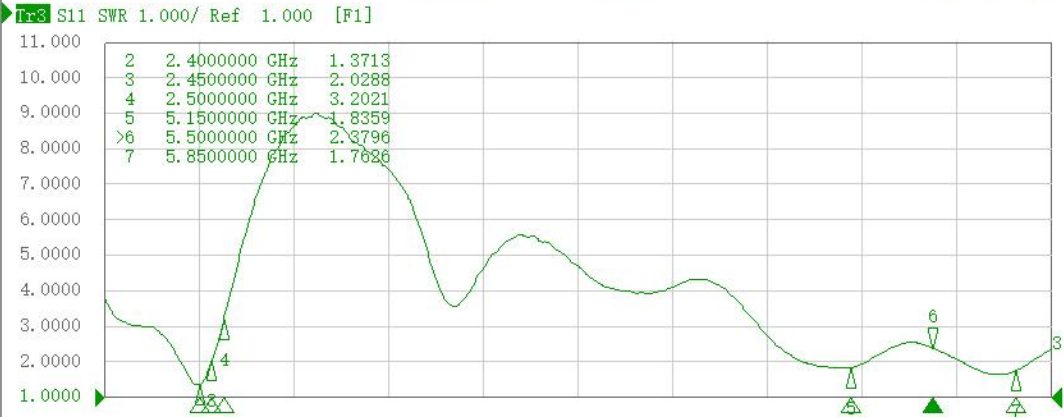
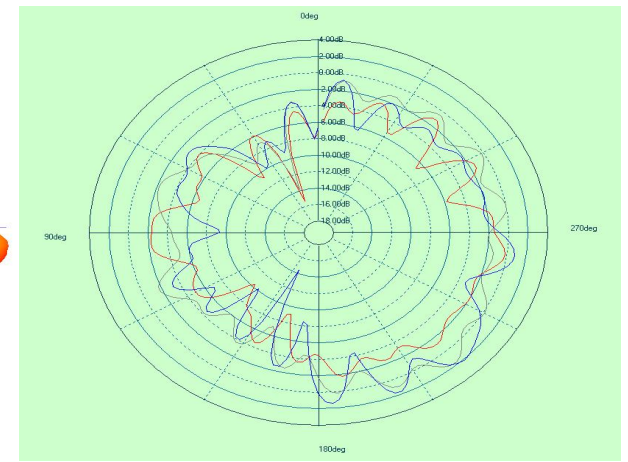
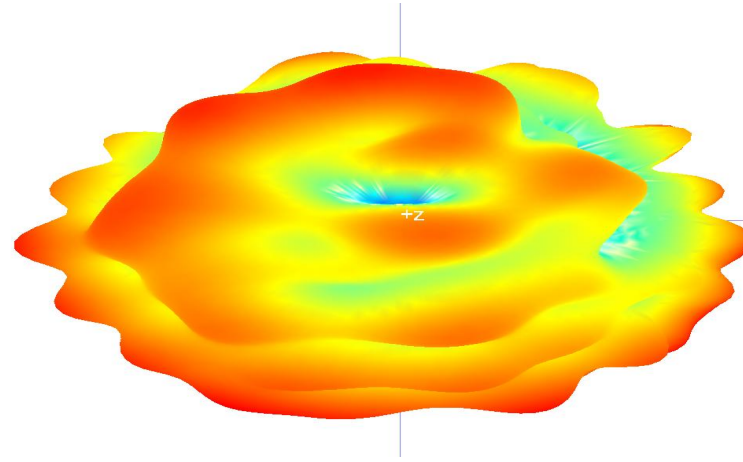
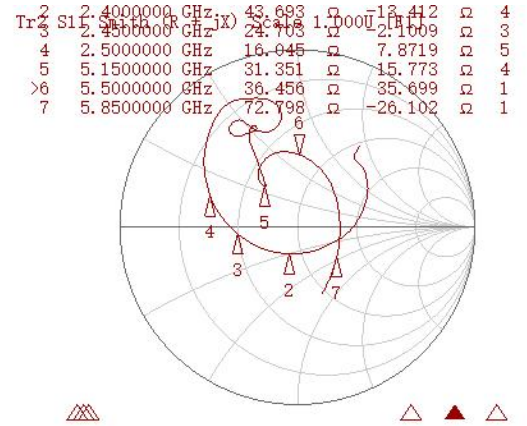
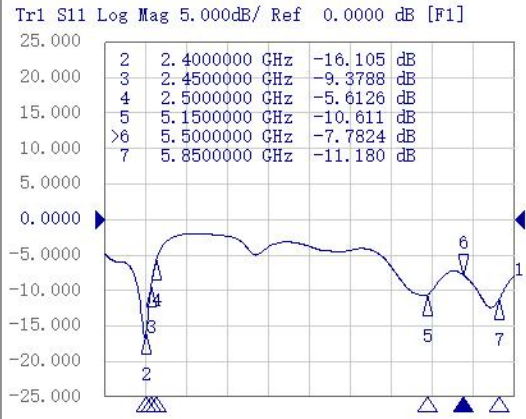


Measuring instrument : Agilent Technologies E5071B 300kHz-8.5GHz ENA Series Network Analyzer Darkroom system : MVG SG24LT (Satmio)





## 5.8G Passive pattern



Measuring instrument : Agilent Technologies E5071B 300kHz-8.5GHz ENA Series Network Analyzer Darkroom system : MVG SG24LT (Satmio)



OTA

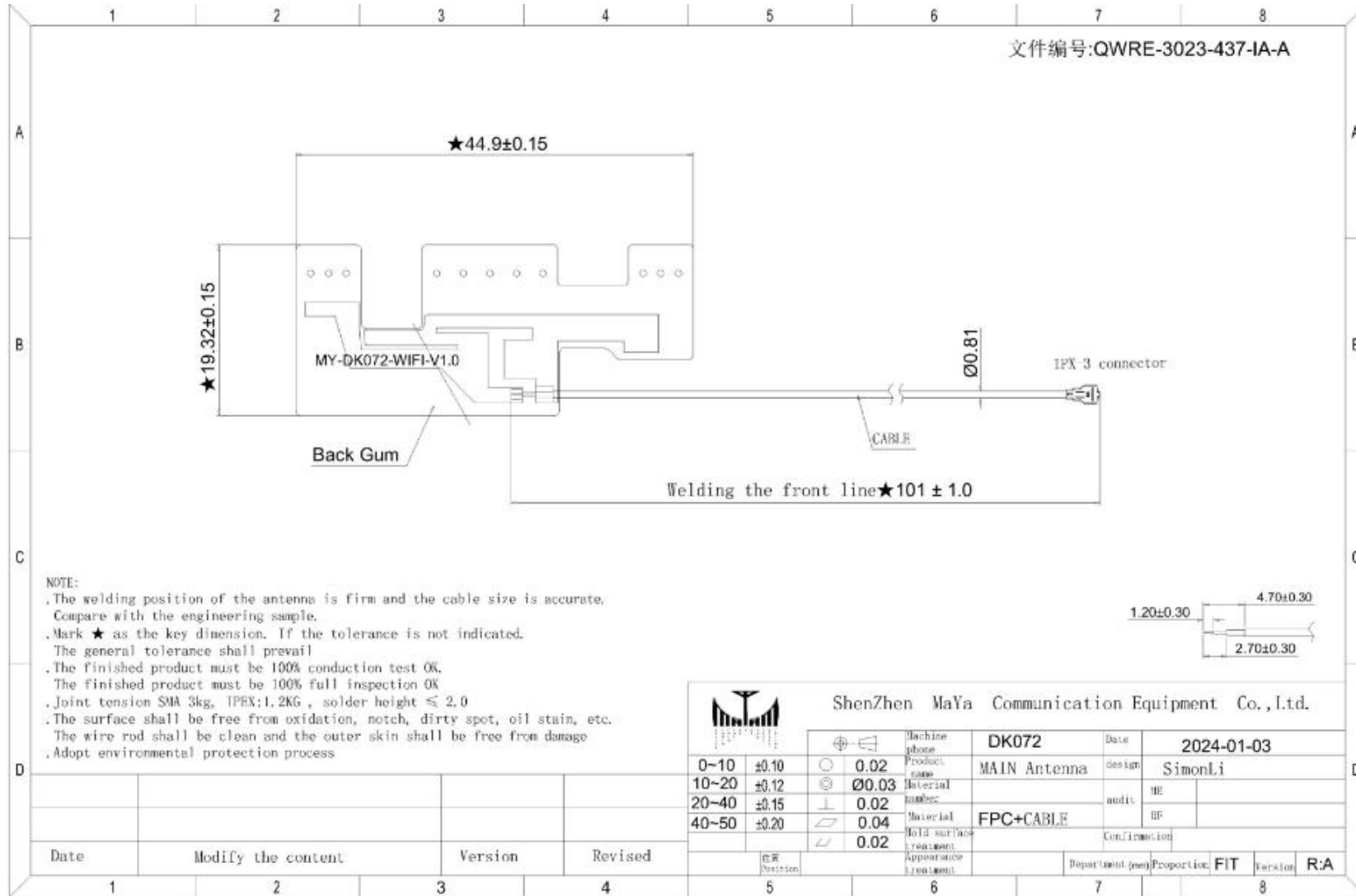
<b>3D</b>	BAND	WiFi_B			WiFi_G		
	CHANNEL	L	M	H	L	M	H
	TRP	13.68	14.22	12.88	13.26	13.23	12.63
	TIS			-83.15			-68.31
	BAND	WiFi_N					
	CHANNEL	L	M	H			
	TRP	12.35	13.62	13.92			
	TIS			-65.95			



OTA

<b>3D</b>	BAND	WiFi_A			WiFi_AC		
	CHANNEL	L	M	H	L	M	H
	TRP	14.32	14.59	14.89	13.35	14.89	14.94
	TIS			-72.11			-65.11
	BAND	WiFi_AX					
	CHANNEL	L	M	H			
	TRP	14.38	14.78	14.61			
	TIS			-66.81			

# Structural drawings






## Conclusion

1. This report is the sample antenna test results .
2. If you have any questions, please call.

# THANK YOU

---

If you have any questions, please contact us  
Daily service hours : Monday to Saturday 9:00-18:00  
Switchboard Hotline : 0755-36615535 Fax: 0755-82916227  
 website : [www.mayaant.com](http://www.mayaant.com)

Confidentiality requirements

Shenzhen Maya communication equipment Co., Ltd. has owned the information provided by the proprietary technology and is not allowed to disclose it to any person or company without the prior written consent of Shenzhen Maya communication equipment Co., Ltd.