



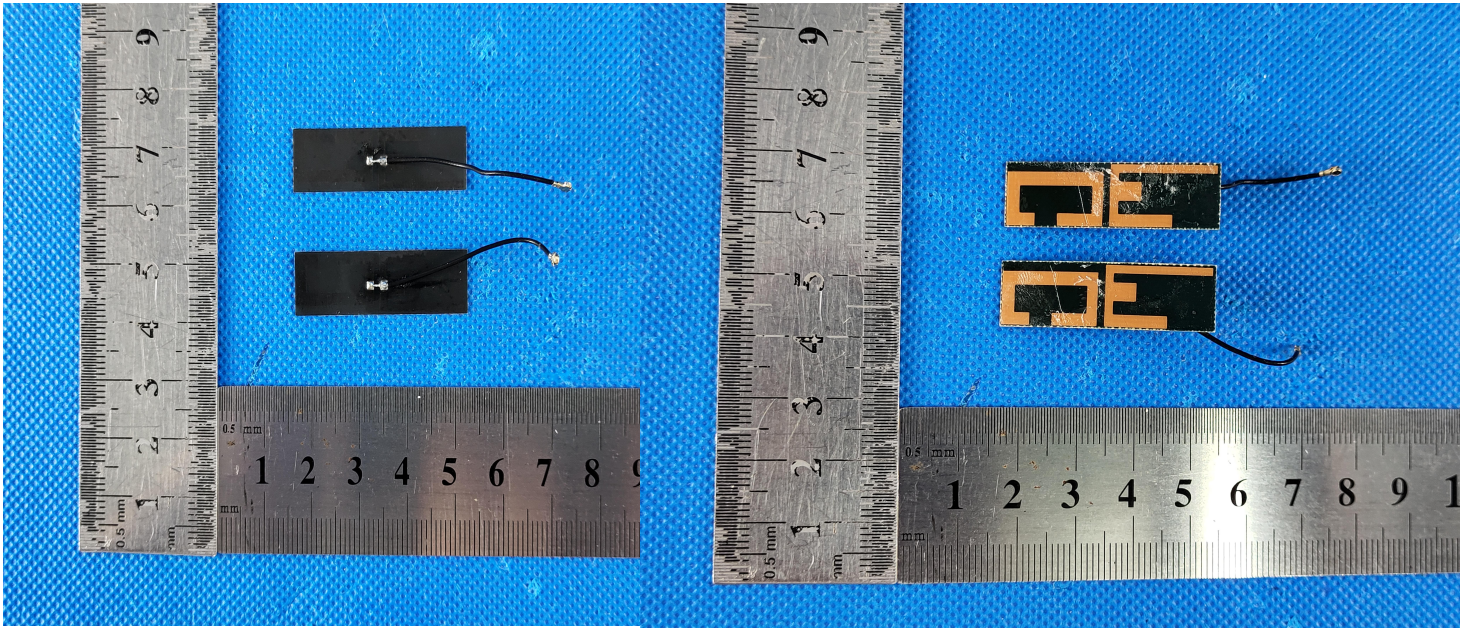
电性测试报告

Test Reports

| Electrical Properties | |
|------------------------------|--|
| Frequency | 2.4-2.5GHz 5.15-5.85GHz |
| Impedance | 50 Ohm Nominal |
| V.S.W.R | 1.92 : 1 Max |
| Return Loss | -10 dB Max |
| Radiation | Omni-directional |
| Gain (Peak) | 2.4G:4.47dBi 5.2G:2.82dBi 5.8G:4.63dBi |
| Efficiency | >60% |
| Polarization | Linear, Vertical |
| Admitted Power | 1 W |
| Connector | MHF4 |
| Physical Properties | |
| Antenna Material | PCB |
| Cable Type | O.D. 0.81mm // L= 44mm |
| Operating Temp. | -10 ~ +60 °C |
| Storage Temp. | -10 ~ +70 °C |
| Cable Color | BLACK |



天线尺寸 Antenna size



Length: 35mm

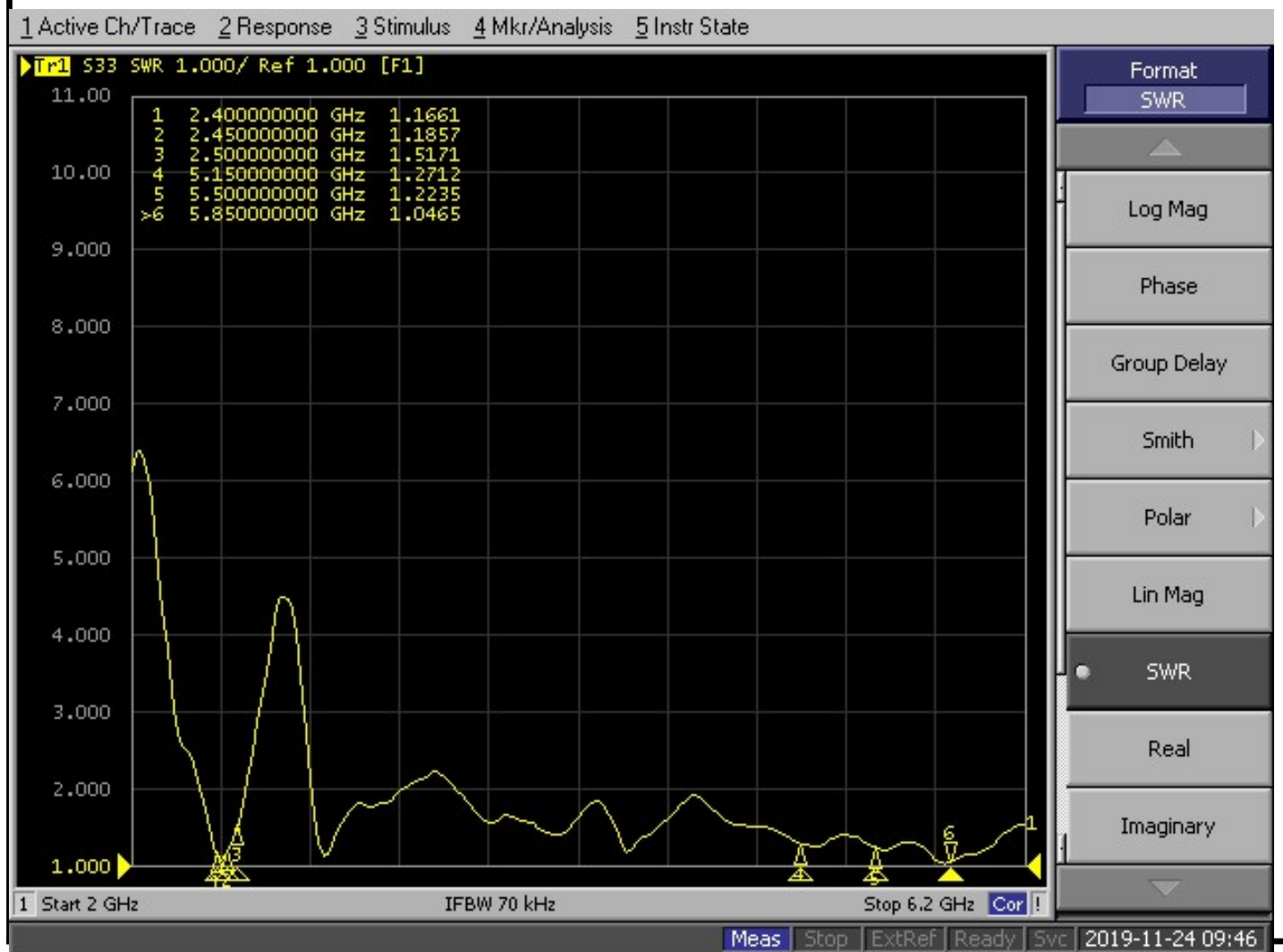
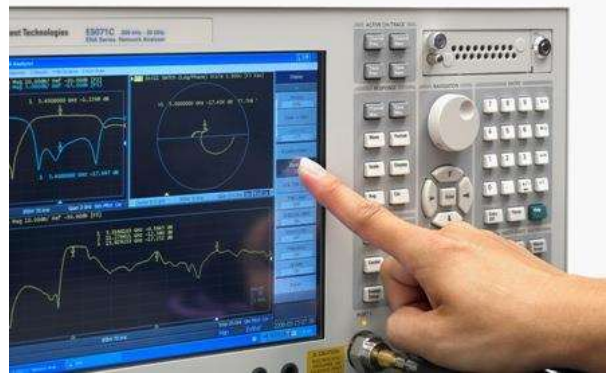
Width: 10mm



S 参数测试

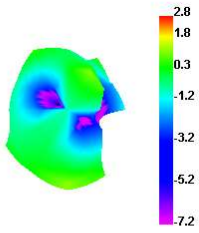
S Parameter Test

Agilent E5071C

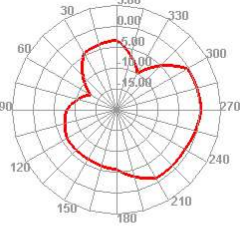




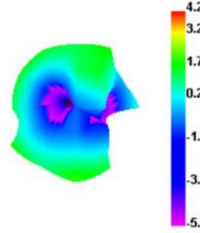
2400.000MHz



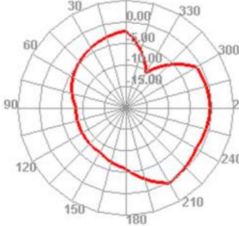
2400.000MHz H



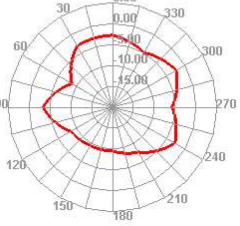
2450.000MHz



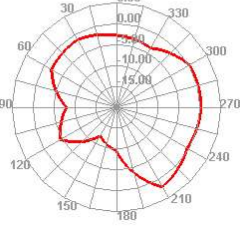
2450.000MHz H



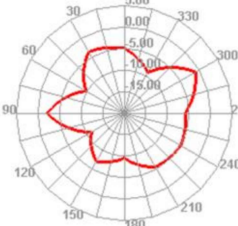
2400.000MHz E1



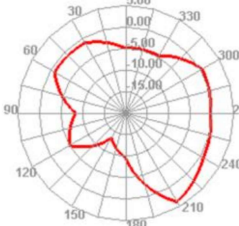
2400.000MHz E2



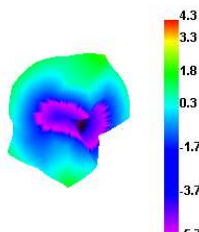
2450.000MHz E1



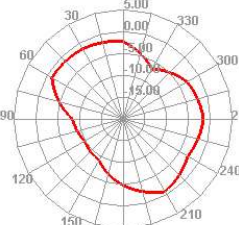
2450.000MHz E2



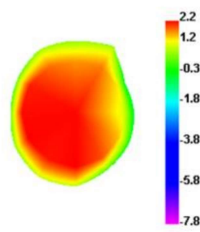
2500.000MHz



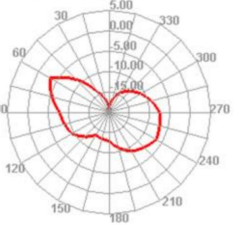
2500.000MHz H



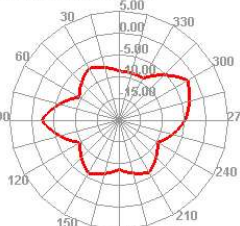
5100.000MHz



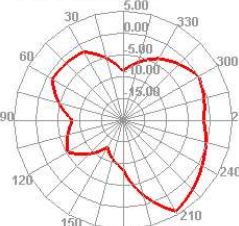
5100.000MHz H



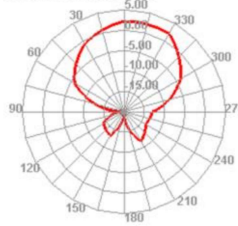
2500.000MHz E1



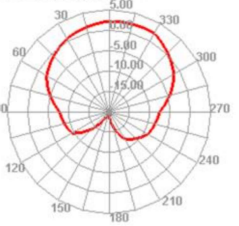
2500.000MHz E2



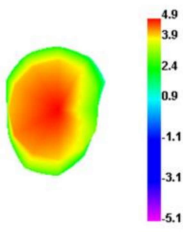
5100.000MHz E1



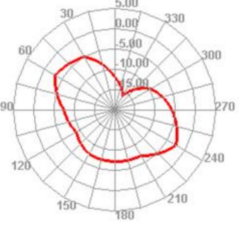
5100.000MHz E2



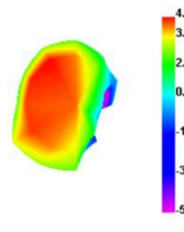
5550.000MHz



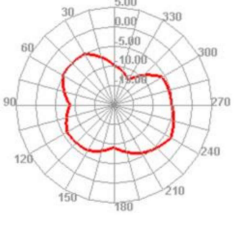
5550.000MHz H



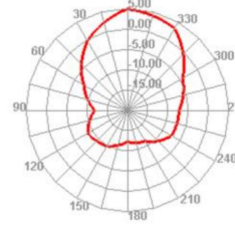
6000.000MHz



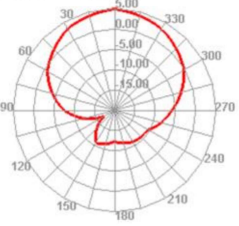
6000.000MHz H



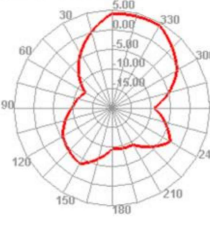
5550.000MHz E1



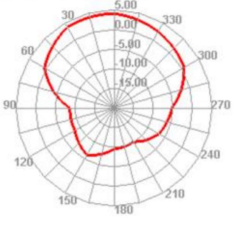
5550.000MHz E2



6000.000MHz E1



6000.000MHz E2



| Freq (MHz) | Effi (%) | Gain (dBi) |
|------------|----------|------------|
| 2400 | 49.55 | 2.78 |
| 2410 | 48.09 | 2.95 |
| 2420 | 49.58 | 3.29 |
| 2430 | 47.6 | 3.33 |
| 2440 | 52.78 | 3.98 |
| 2450 | 54.27 | 4.21 |
| 2460 | 56.55 | 4.47 |
| 2470 | 53.23 | 4.14 |
| 2480 | 53.45 | 4.16 |
| 2490 | 50.37 | 4 |
| 2500 | 51.64 | 4.28 |

2400.00MHz - 2500.00MHz

| Freq (MHz) | Effi (%) | Gain (dBi) |
|------------|----------|------------|
| 5100 | 44.6 | 2.24 |
| 5125 | 46.12 | 2.58 |
| 5150 | 46.75 | 2.75 |
| 5175 | 47.62 | 2.82 |
| 5200 | 45.07 | 2.29 |
| 5225 | 48.55 | 2.75 |
| 5250 | 40.48 | 1.84 |
| 5275 | 45.36 | 2.85 |
| 5300 | 41.7 | 2.63 |
| 5325 | 47.59 | 3.35 |
| 5350 | 45.58 | 3.2 |
| 5375 | 40.04 | 3.29 |
| 5400 | 48.32 | 4.12 |
| 5425 | 40.33 | 3.38 |
| 5450 | 44.44 | 3.27 |
| 5475 | 39.97 | 3.49 |
| 5500 | 47.52 | 4.31 |
| 5525 | 44.91 | 3.96 |
| 5550 | 47.11 | 4.91 |
| 5575 | 38.82 | 3.89 |
| 5600 | 43.34 | 4.28 |
| 5625 | 46.13 | 3.59 |
| 5650 | 45.32 | 4.73 |
| 5675 | 49.18 | 3.84 |
| 5700 | 50.73 | 4.8 |
| 5725 | 48.81 | 3.88 |
| 5750 | 51.03 | 4.63 |
| 5775 | 48.81 | 3.38 |
| 5800 | 45.69 | 3.82 |
| 5825 | 46.23 | 2.7 |
| 5850 | 44.8 | 3.81 |
| 5875 | 43.94 | 3.2 |
| 5900 | 43.94 | 3.89 |
| 5925 | 46.82 | 4.1 |
| 5950 | 48.76 | 4.31 |
| 5975 | 55.94 | 4.58 |
| 6000 | 57.8 | 4.85 |

add: 东莞市大朗镇佛新村聚祥二路26号 电话: 0769-82226176 传真: 0769-82226175