

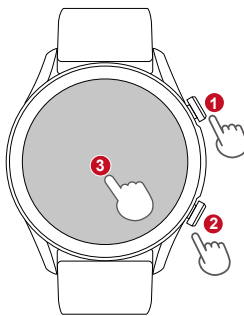
Quick Start Guide (EN)



Model: X1/X1Pro
Charging voltage: 5V
Screen Size: 1.39 inch
Charging time: 2.5 hours
Battery capacity: 300 mAh
Battery life: 5 days

Waterproof: 10M
Bluetooth version: BLE 5.3
Screen material: BOE Glass
Strap width: 22 mm
Operating temperature: -10 C-40 C

Control Your Watch



- 1 Function Button**
Press
- Wake the screen
 - Return to the home screen
 - Pause/resume the sport
 - Enter the menu interface
- Hold**
- Power on / off the watch
 - Reboot the watch
 - Reset the watch
 - Long press 10-12S to force restart

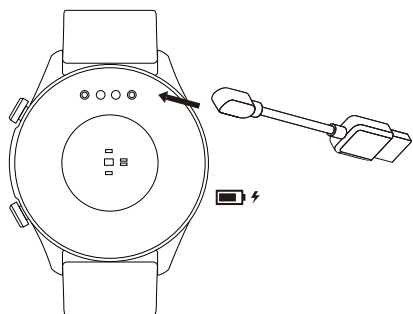
- 2 Sport Button**
Press
- Wake the screen
 - Enter/Exit the sport interface
- 3 Touch Screen**
- Hold the home screen to change the watch face
 - Swipe to go to different interfaces
 - Tap to enter the function
 - Swipe the screen to the right to return to the previous interface

Note:
 The distance between the mobile phone and the watch shall be kept less than 10 meters please. And please refresh the interface of the APP if disconnection.

Using Your Watch

- 1 Charging**
- Before using your X1/X1Pro for the first time, charge the battery to its full capacity. It is recommended to use a conventional charger above 5V for charging, not the USB interface at the computer terminal.

- Place the magnetic charger on the magnetic charging points of the watch.
- While your watch is charging, the screen will show its progress.
- Once the battery is fully charged, remove the charger.



2 Install Infowear App on your smartphone

You can download Infowear App from Apple Store/Google Play or scan the QR codes left to download

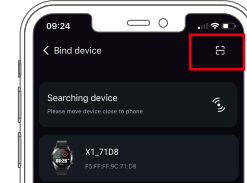
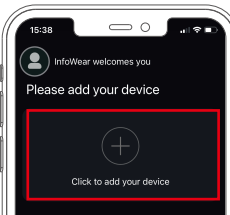


3 Device Binding



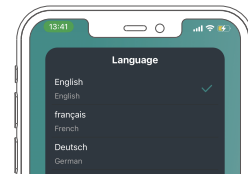
1 Turn on the Bluetooth of your phone

- 2 Open the Infowear App**
 Go to the "Device" page and tap "Click to add your device"



- 3 tap "QR" and scan the QR code on the watch to pair**

- 4 After the binding is completed, Select the desired language of the watch**



YouTube

Scan the QR code Right and follow the video instructions to connect the watch

video guide connection

Note:

Only when your watch is connected to the Infowear App, the App is running on your phone, and "Notification Alerts" is enabled in the app, will messages be notified.



Settings

- Brightness**
You can set the watch brightness.
- Ringtone Vibration**
You can set the vibration level to get an alert of any notification. You can also choose to put the watch on silent mode.
- Wrist Awake**
Turn on the wrist awake and set the auto screen off as per your preference.
- Bright screen time out**
You can set the bright screen time out as per your preference.
- DND**
You can set the DND duration the watch. Feed-in the start and end time
- Menu view**
You can set the Main menu as per your preference.
- About calls**
Follow the onscreen instructions to set or remove the Bluetooth call connectivity.

- Device information**
You will find all the information related to the device here, including device name, Bluetooth name and version.
- QR code**
Scan the QR code to connect with the app.
- Reboot**
You can choose to Reboot to restart the watch.
- Power off**
You can choose to power off to restart the watch.
- Reset**
You can choose to reset. Do note if you choose to reset, all your data and settings will be erased.

NOTE:
 This equipment has been tested and found to comply with the limits for a Class B digital device, pursuant to part 15 of the FCC Rules. These limits are designed to provide reasonable protection against harmful interference in a residential installation. This equipment generates, uses and can radiate radio frequency energy and, if not installed and used in accordance with the instructions, may cause harmful interference to radio communications. However, there is no guarantee that interference will not occur in a particular installation. If this equipment does cause harmful interference to radio or television reception, which can be determined by turning the equipment off and on, the user is encouraged to try to correct the interference by one or more of the following measures:

- Reorient or relocate the receiving antenna.
- Increase the separation between the equipment and receiver.
- Connect the equipment into an outlet on a circuit different from that to which the receiver is connected.
- Consult the dealer or an experienced radio/TV technician for help.

Changes or modifications not expressly approved by the party responsible for compliance could void the user's authority to operate the equipment.

This device complies with Part 15 of the FCC Rules. Operation is subject to the following two conditions:
 (1) this device may not cause harmful interference, and (2) this device must accept any interference received, including interference that may cause undesired operation.