



W10 User Manual

Specifications

Model	W10	Waterproof	IP68
Charging voltage	5V	Bluetooth version	BLE 5.2
Screen Size	1.69 inch	Standby time	20 days
Charging time	2.5 hours	Screen material	Glass
Battery capacity	290 mAh	Operating temperature	-10°C-50°C
Battery life	5-7 days	Strap width	22mm

Note:

The battery life refers to the duration of operation under the condition of daily use with the average screen-on times of 200 times/ day and the vibration of 30 times/ day for incoming calls, text messages and App messages.

The standby time represents the electricity consumption when it is not being worn or it is being let stand.

The distance between the mobile phone and the watch shall be kept less than 12 meters please. And please refresh the interface of the APP if disconnection.

It is recommended to use a conventional charger above 5V for charging, not the USB interface at the computer terminal.

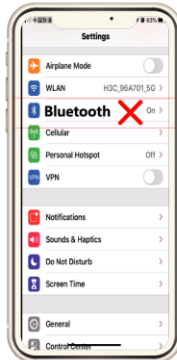
Bind watch



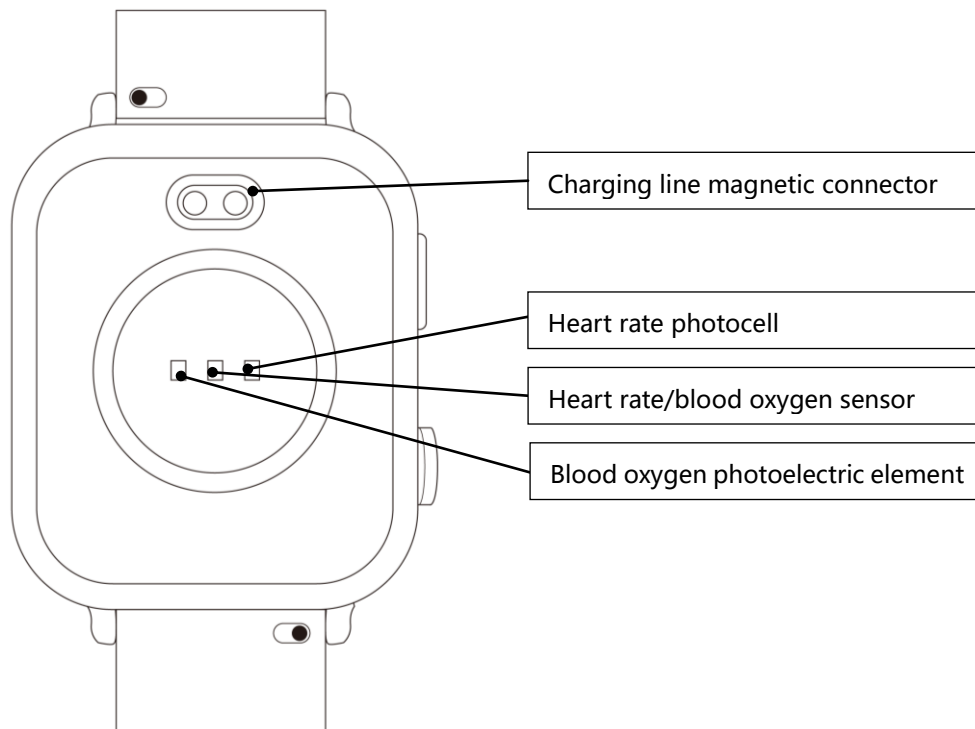
Correct operation:Scan the QR code below or download “GloryFit ” APP through the mobile APP store to pair with the watch



Wrong operation: Pair the watch directly with the Bluetooth in your mobile phone's settings.



Description of appearance



Note: Please wear the watch properly without the strap being tightened too tightly or too loosely, and keep it away from carpal. Please wear it tightly when taking exercises.

GloryFit Download and Device Binding

Please access corresponding permission for the software, including the permission of notification, location and Bluetooth.

- 1 Start up by long press of the key or start up automatically by charging. Access to the interface of download and binding after touch the screen.
- 2 Slide left to access the QR code, and scan the QR code to download the APP
 - 2.1 As for Android, you may scan with your camera, or you can download the QR code

scanning tool in the APP Store to scan and download the code. However, you also can search GloryFit from Google Play if you don't want to use the QR code.

2.2 As for Apple, especially the system of iOS 11 and above, you may directly scan with your phone.

3 Download GloryFit

3.1 Please click Install to download as for Android

3.2 Please click "GET" to download as for Apple

4 Open GloryFit after the download is done

4.1 Open the software by clicking "Open"

4.2 Access the welcome page

5 Give corresponding permissions and click Agree

5.1 As for Android, click "Agree" when it prompts to agree the User Agreement and Privacy Policy

5.2 As for Apple, click "OK" when it prompts to get Bluetooth

6 Use email to register your account and then log in

6.1 Check Agree for the User Agreement and Privacy Policy (not available for Android)

6.2 Type in your email in the email box

6.3 Click Get captcha to get the verification code

6.4 Type in the verification code into the box

6.5 Click "Login" to log in

6.6 Login success

6 You can log in without an account as well, however, you cannot experience all functions

without such an account.

6.1 As for Android, it will display the content related to background settings. Please read it carefully and set the APP to run in the background. After setting, please click "Ignore" to for the next step.

6.2 As for Apple, it will prompt to click the lower left corner to agree to the User Agreement and Privacy Policy, and then click "Ignore" to skip for login.

7 Set your personal BMI information, such as height, weight, sex, age, goal and so on.

8 Allow APP to get the location permission

8.1 For Android, it will remind you to set the location permission, please click allow

8.2 For Apple, please allow the location permission when using the APP

Scan the code for binding:

10 Click "Device" in any interface of GloriFit

12 Allow APP to get photographing permission

13 Touch the screen, access the QR code page, and make your phone to scan the QR code of the watch

13 After recognition, for Apple, it will prompt to set the permission to bind Bluetooth and allow notification (No such operation for Android)


13.1 Confirm to bind Bluetooth, please click "Pair"


13.2 Get the notification permission, please click "Allow"

14. Binding succeeded

Function introduction



“Do Not Disturb” mode ON-OFF: 

means the mode is OFF;  means the mode is ON. When the function of “Do Not Disturb” is enabled, New messages cannot be received and vibrate cannot be vibrated.

. Meanwhile, the function of “raise hand to activate display” will be disabled temporarily.

Telephone : keypad,call logs.contacts,switch

“Find My Phone” mode: It is ineffective to click it when the watch is not connected to a phone. When the watch is connected to a phone, click the icon and the phone will ring.

Menu style: list,honeycomb,sudoku

Set the bright of watch screen: It is provided with 4 levels of brightness, and the default is the first level of brightness.

System settings: Including change of dial, QR code for download, device information, restore factory defaults, power-off and the like.

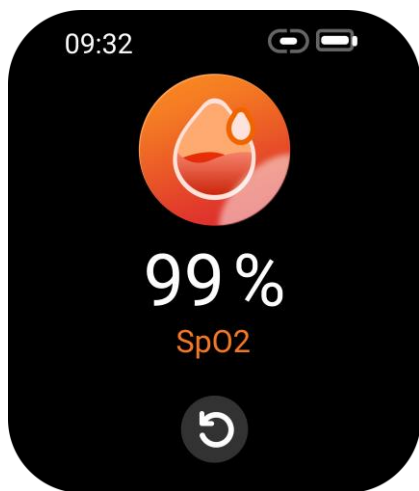
State



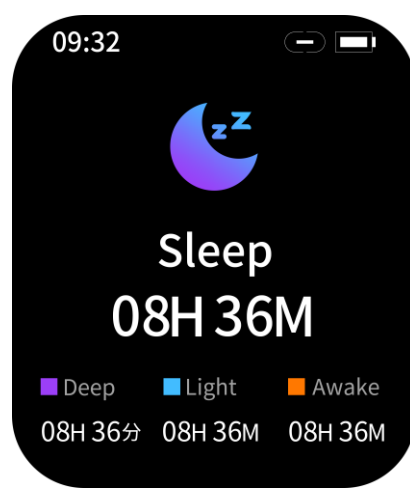
Heart rate



Blood oxygen



Sleep record

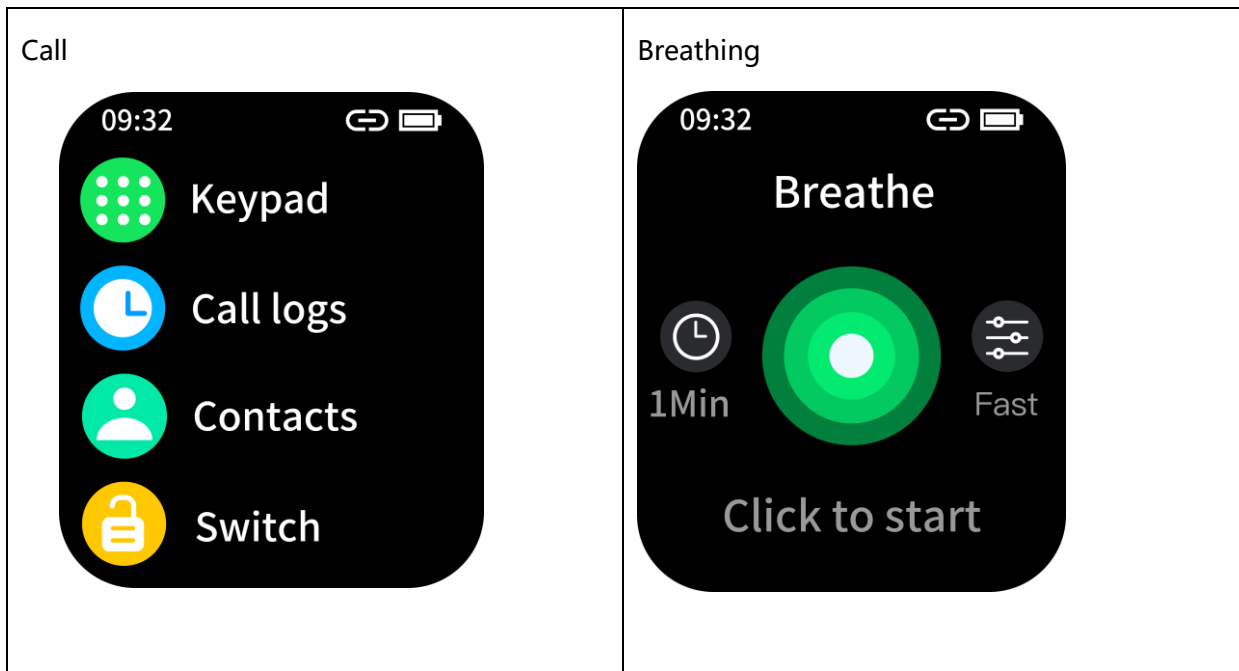


Exercises

- Outdoor Running
- Cycling
- Skipping
- Swimming

Weather





Note: This device is not a medical device, and the monitoring data is not intended for medical purpose and only for reference.

For iOS system:

App will be cleaned up by iOS under standby or sleep mode, if the iPhone hasn't been used for a while (e.g. over 2 hours). The watch will be disconnected from the App. Data sync between watch, notification

center and "GloryFit" App stops. Open the APP on your iPhone again, it will automatically reconnect to the watch.

For Android system:



Please enable "Background activities" permission settings on the phone to receive notification and alerts. Smart phone will stay connected with the watch, even when the phone is in standby mode

(the screen is not lighted up), and will not be cleaned up by the Android system.

For Huawei mobile phone, the steps are as follows:

Settings →Application→Application Startup Management→ GloryFit Manual management,
→Enable all permissions (allow self-start, allow associated start, allow background activities).

Frequently Asked Questions:

1. Could not find the watch in GloryFit App (1) Update"GloryFit" to the latest Version.

(2) Disable Bluetooth, restart the Bluetooth, and then reconnect (3)"GloryFit"can support
Android 6.0, iOS 9.0,Bluetooth 4.2 or above.

2. The watch received no alerts, text messages or phone calls

(1) Enable the notification setting for incoming calls, SMS and each App in"GloryFit"APP

(2) Check the Bluetooth connection.

(3) The watch need to stay connected to the phone via Bluetooth.

3. Bluetooth is often disconnected

(1) The Bluetooth signal intensity is obviously faded for distance above 7 meters.

(2) The Bluetooth connection stability could be affected by obstacles, e.g. the human body,
metal jewelry etc.

(3) Whether the Bluetooth function of the mobile phone is abnormal.

4. About data

Please synchronize the watch with your phone via "GloryFit"App at least once a day.

5. How to restart watch?

(1) Slide up on Default dial → Setting→ Switch Off.

(2)Connect the charger

1. For common usage problems, open the app

personal center - FAQ/Help to view and solve them.

NOTE: This equipment has been tested and found to comply with the limits for a Class B digital device, pursuant to part 15 of the FCC Rules. These limits are designed to provide reasonable protection against harmful interference in a residential installation. This equipment generates uses and can radiate radio frequency energy and, if not installed and used in accordance with the instructions, may cause harmful interference to radio communications. However, there is no guarantee that interference will not occur in a particular installation. If this equipment does cause harmful interference to radio or television reception, which can be determined by turning the equipment off and on, the user is encouraged to try to correct the interference by one or more of the following measures:

- Reorient or relocate the receiving antenna.
- Increase the separation between the equipment and receiver.
- Connect the equipment into an outlet on a circuit different from that to which the receiver is connected.
- Consult the dealer or an experienced radio/TV technician for help

Changes or modifications not expressly approved by the party responsible for compliance could void the user's authority to operate the equipment.

This device complies with Part 15 of the FCC Rules. Operation is subject to the following two conditions:

(1) this device may not cause harmful interference, and (2) this device must accept any interference received, including interference that may cause undesired operation.

FCC ID: 2A7BAW10