



REGULATORY TESTING FROM START TO CERTIFICATE

Intro

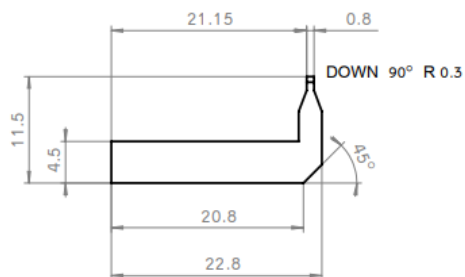
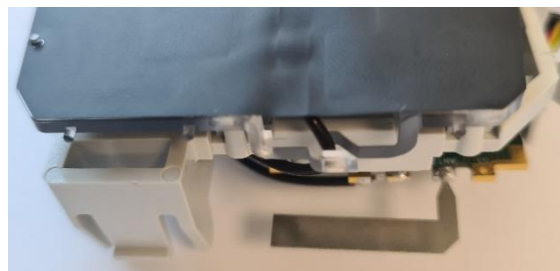
Antenna gain documentation required for all FCC Part 15 devices. Must provide either an antenna datasheet/ specification or a test report with gain measurements and plots. This Information cannot be held confidential. Additionally, proprietary information of the design itself can remain confidential in either the 'operational description' or 'schematic'.

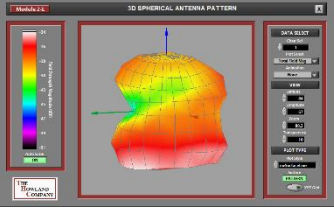
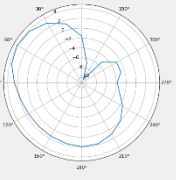
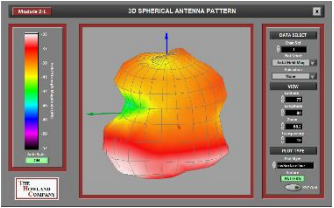
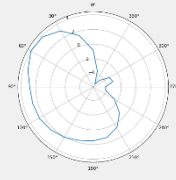
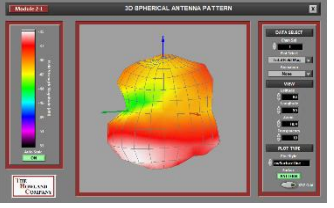
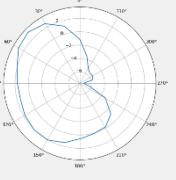
Antenna specification:

1. **Company:** AradTech
2. **Product name:** WM XTR CAT-M
3. **RF module/chip:** *Blue NRG-1*
4. **Antenna description**

Antenna type	Monopole
Antenna manufacturer	N/A (In-house design)
Antenna dimensions	22.8 x 11.5 x 0.3 mm
Frequency range	2402MHz to 2480MHz
Modulation	GFSK
Antenna gain max (peak)	0.0dBi
Cable loss	N/A
Connector type	N/A (direct soldering)

5. Antenna layout



Channel 0 2402MHz	Channel 19 2440MHz	Channel 39 2480MHz
<p>2402MHz</p>   <p>Import Data File: File Path: C:\net_data\files\2402MHz.dby</p> <p>Graph Parameters: Enter Desired Theta: 90.0 Select Polarity: Vertical Minimum Power [dBm]: -13.31 Maximum Power [dBm]: 4.09 Delta [dB]: 14.41 Average Power [dBm]: 40.34</p>	<p>2440MHz:</p>   <p>Import Data File: File Path: C:\net_data\files\2440MHz.dby</p> <p>Graph Parameters: Enter Desired Theta: 90.0 Select Polarity: Vertical Minimum Power [dBm]: -5.36 Maximum Power [dBm]: 3.98 Delta [dB]: 9.32 Average Power [dBm]: 0.01</p>	<p>2480MHz:</p>   <p>Import Data File: File Path: C:\net_data\files\2480MHz.dby</p> <p>Graph Parameters: Enter Desired Theta: 90.0 Select Polarity: Vertical Minimum Power [dBm]: -7.19 Maximum Power [dBm]: 3.19 Delta [dB]: 10.38 Average Power [dBm]: -2.93</p>