

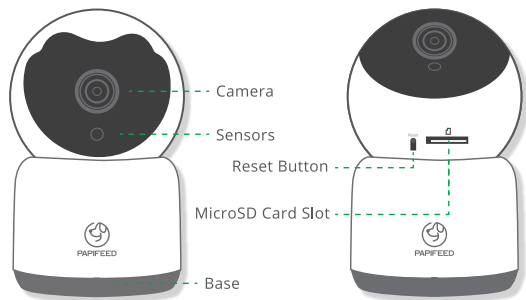


Pet Smart Camera Instruction Manual



Please Read and Keep This Manual Carefully Before Using the Product

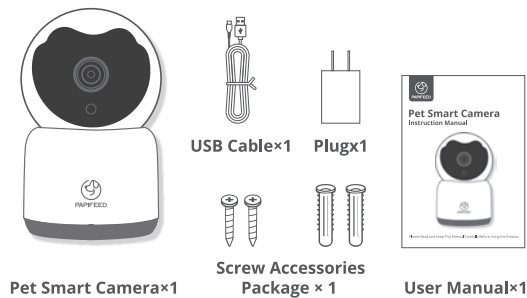
Product Introduction



Product Parameters

Product Name	Pet Smart Camera
Resolution	1080P
Pan Tilt Vision	350° Horizontally Vision and 110° Vertical Vision
Night Vision(Distance)	10M
Button Function	Restore Factory Setting
Intercom Function	Two-Way Audio
Storage Method	MicroSD Card, Cloud Storage
Rated Voltage	5V 1A
Power Supply	5W
Product Size	Height*Diameter:110mm*70.5mm

Packing List



Connect "Smart Life" APP

Please Follow These Steps to Set

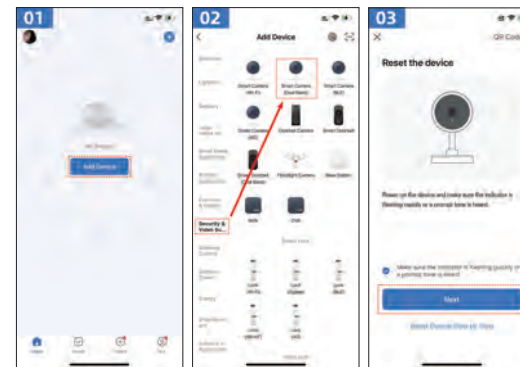
- STEP 1** Please scan the code first to download "Smart Life" APP. Or download the "Smart Life" App inside the app store. (Android or iOS System)
- STEP 2** Before adding the device to ensure that the phone's Bluetooth and WIFI is on.



Download " Smart Life" APP

- STEP 3** After the device is powered on, wait for about 15 seconds and hear a "ding dong ding dong" sound and the camera rotates for a week. Self Check is complete, open "Smart Life" APP, click [+] in the upper right corner:

Add devices → Security Monitoring → Security Monitoring -Smart Camera (WiFi)



Smart Camera (Dual-Band Wi-Fi)

- STEP 4** Enter the connected WiFi account and password. The device supports Dual-Band WiFi (2.4GHz WiFi only).



- STEP 5** Cellphone QR code should be facing the camera, keep 15-20cm distance (move slowly from near to far);until you hear a "drop" sound means the scan is successful.



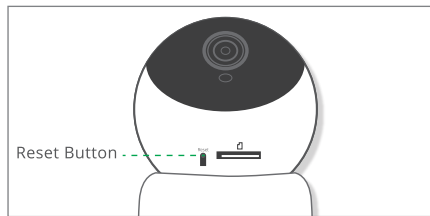
Then select "I Heard a Prompt" to start searching for the device, and finally the device is added successfully.



Scan for more details

www.papifeedpet.com

STEP 6 If you need other phones to reconnect the device, you need to reset the network under power on, long press the [reset button] for about 15 seconds, until you hear a long "drop" sound, and then hear a "ding dong ding dong", along with a week of camera rotation, the device enters the waiting network state, you can reconnect the device.



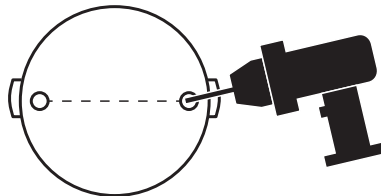
! Tip: Due to the upgrade and update of Smart Life APP, the actual operation may be slightly different from the above description. Please operate according to the current "Smart Life" APP guidelines.

Pet Camera Mounting Instructions

We provide a screw accessories package. It can be fixed to the wall or other locations. You can follow the following instructions for mounting.

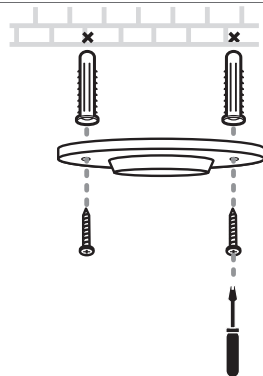
SELECT THE MOUNTING POSITION **STEP 1**

First select the location where the camera will be placed and drill two holes for the screws to pass through.



INSTALL THE BASE

STEP 2



Use the screws to fix the camera base in the appropriate location.

INSTALL THE CAMERA

STEP 3



Fix the camera on the base.

Q & A Troubleshooting

Q: How to share the camera?

A: In the live video viewing interface, click the device button in the upper right corner to enter the device settings interface, click "Share Device", and then click "Add Share" to share it with others.

Q: How does the camera store video?

A: The camera supports SD card storage (up to 128G) and cloud storage two storage methods. Video card storage full automatically delete the earlier video, loop recording.

Q: I want to change the account of the Smart Life App I am using, how should I do it?

A: Log out of the account you are currently logged into the Smart Life App; then just log in again with your new account.

Q: The camera is abnormally offline, how to check?

1. Check whether the power supply and network are normal
2. Reboot the Device
3. Reconfigure the Camera
4. Check whether the home network bandwidth is normal

100% After Sales Service

We provide one year warranty for this pet camera.

Please email our support team at [service@papifeed.cn] if you have any questions, attach your order number and describe your problem in your email. We will get back to you within 24 hours.

Safety Instructions & Precautions

- ◆ Please store this product in a cool place, please do not use it for any other purpose except for feeding.
- ◆ Please place the camera horizontally, it is recommended to place it against the wall to prevent tripping over the wire or being torn by pets.
- ◆ Please do not immerse the body and power supply in water, because it will damage the electronic components.
- ◆ Check the device after installation, if there is water on the power cord or plug, please do not power it on.
- ◆ Children must be used under the guidance of adults.
- ◆ Please make sure to unplug the power supply before installing and removing the spare parts.
- ◆ If you don't use this product for a long time; please remember to take out the battery and unplug it from the power supply.
- ◆ Do not try to repair or modify it by yourself.
- ◆ If you need to use an extension cord, you need to use an extension cord with the same rating.
- ◆ Using product parts that are not provided or recommended by the original factory can lead to unsafe conditions.
- ◆ Please read carefully the precautions listed in the manual and on the package.

This device complies with part 15 of the FCC Rules. Operation is subject to the following two conditions: (1) This device may not cause harmful interference, and (2) this device must accept any interference received, including interference that may cause undesired operation.

Any Changes or modifications not expressly approved by the party responsible for compliance could void the user's authority to operate the equipment.

Note: This equipment has been tested and found to comply with the limits for a Class B digital device, pursuant to part 15 of the FCC Rules. These limits are designed to provide reasonable protection against harmful interference in a residential installation. This equipment generates uses and can radiate radio frequency energy and, if not installed and used in accordance with the instructions, may cause harmful interference to radio communications. However, there is no guarantee that interference will not occur in a particular installation. If this equipment does cause harmful interference to radio or television reception, which can be determined by turning the equipment off and on, the user is encouraged to try to correct the interference by one or more of the following measures:

- Reorient or relocate the receiving antenna.
- Increase the separation between the equipment and receiver.
- Connect the equipment into an outlet on a circuit different from that to which the receiver is connected.
- Consult the dealer or an experienced radio/TV technician for help.

This equipment complies with FCC radiation exposure limits set forth for an uncontrolled environment. This equipment should be installed and operated with minimum distance 20cm between the radiator & your body.