

APPROVAL SHEET

PRODUCT NAME: 2.4G FPC Inner Antenna L=60mm+terminal

UB P/N: UB01C60F2D3582A REV: B

	MANUFACTURER SIGNATURE
CHECKED BY:	 Kang jun. Xu
APPROVED BY:	Yunfei. Zhang
DATE:	2023/05/24

Contents

<i>Item</i>	<i>Description</i>
1.-----	Specification table
2.-----	Test Items and Equipment
3.-----	Mechanical Specification
4.-----	Test report
5.-----	Antenna installation diagram

1. Specification table:

Electrical Specification	
Design Specifications	Types
Antenna Type	FPC antenna
Operating Frequency	2400-2500MHz
Peak Gain	2.03/3.48dBi
Average Efficiency	57.1% / 60%
VSWR	<2
Polarization	Linear
Axial Ratio	\
Radiation pattern	Omnidirectional
Impedance	50 ohm
Power handling	1W
Interface	Cabel+terminal
Overall dimensions	31.5*10mm, L=60mm
Operating Temp.	-20°C~+70°C
Storage Temp.	-20°C~+70°C

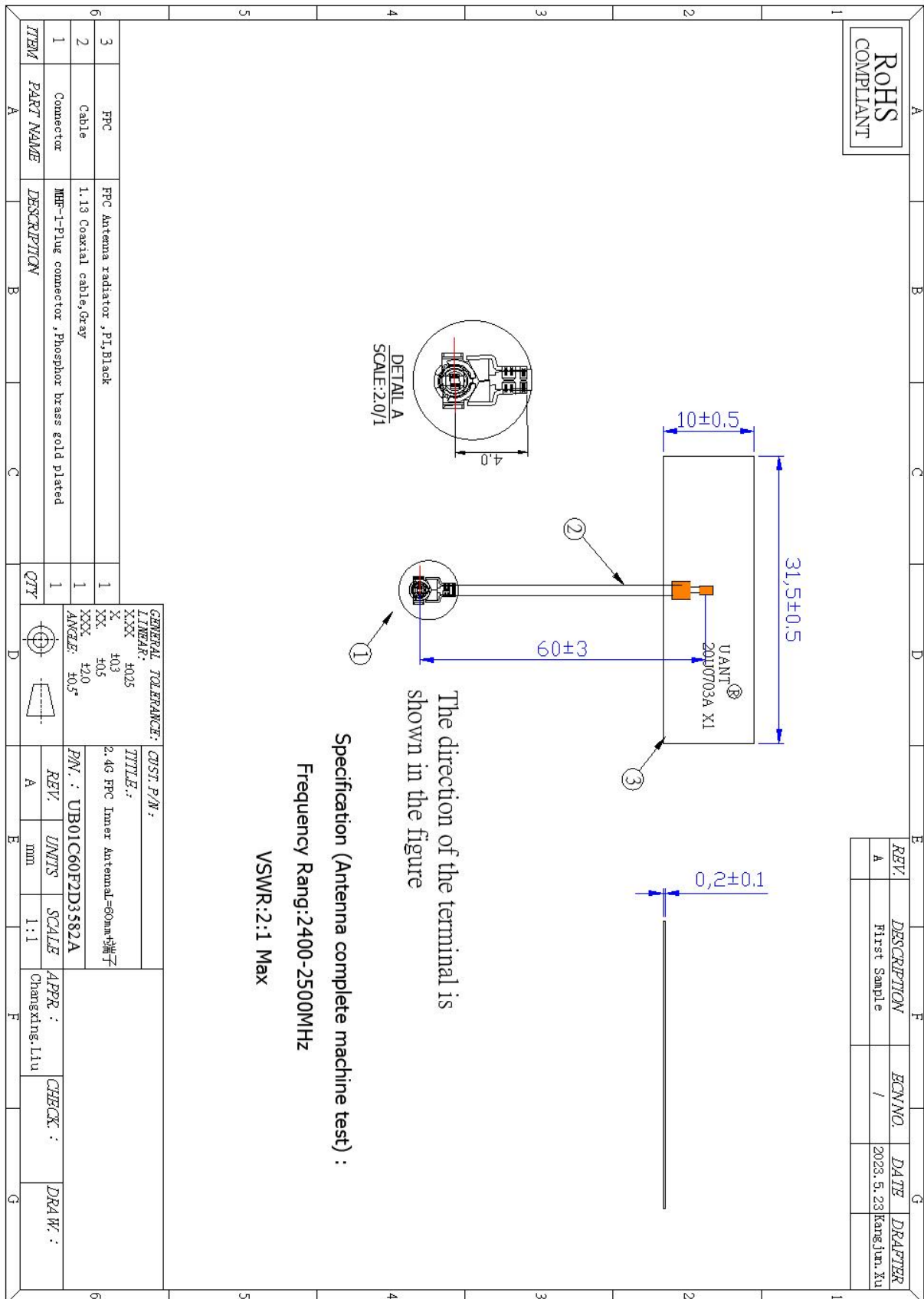
2. Test Items and Equipment

Name	Parameter	Method	Standard number
Mobile communication antenna	VSWR	Generic specification for antennas used in the mobile communications	GB/T 9410-2008
	Gain		
	Radiation pattern		
Antenna performance	Radiation efficiency	IEEE Standard Test Procedures for Antennas	ANSI/IEEE Std 149-1979

2.1 Equipment list

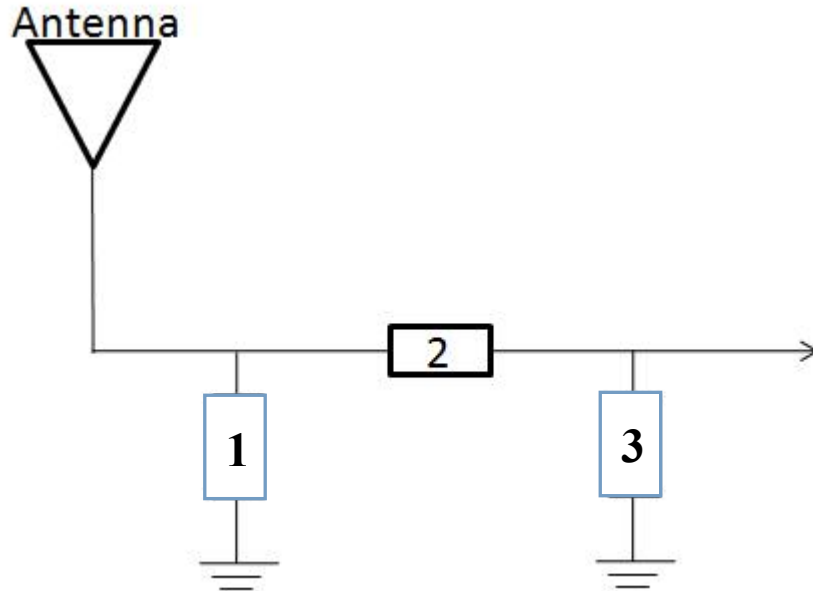
Equipment	Manufacturer	Model No.	Serial No.	Last Cal.	Due Date
Network Analyzer	Agilent	E5071C	MY4631599 6	2022.08.25	2023.08.24
Radio Communication Tester	ROHDE&SCHWARZ	CMW500	0002K50-10 0844	2022.08.25	2023.08.24
Active Test Application	XH-IOE	TASuite V3.6.2			
Passive Test Application	XH-IOE	Pssive Test V2.7.0			
Passive Caculate Application	XH-IOE	TemradioDP			

3. Mechanical Specification



4. test report:

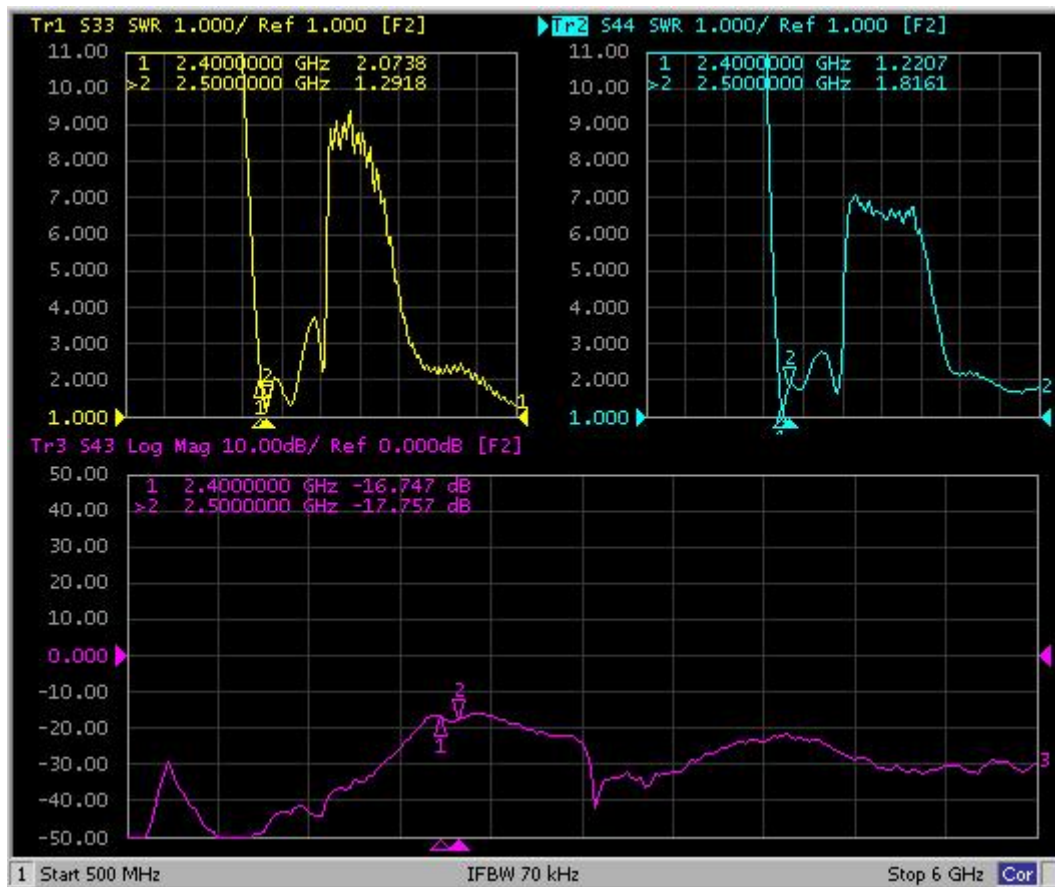
Matching Circuits



The Circuit matching system and components

Location	Description	Tolerance
1	-	-
2	RES	0 Ω
3	-	-

4.1: S-Parameter



4.2: Efficiency and Gain

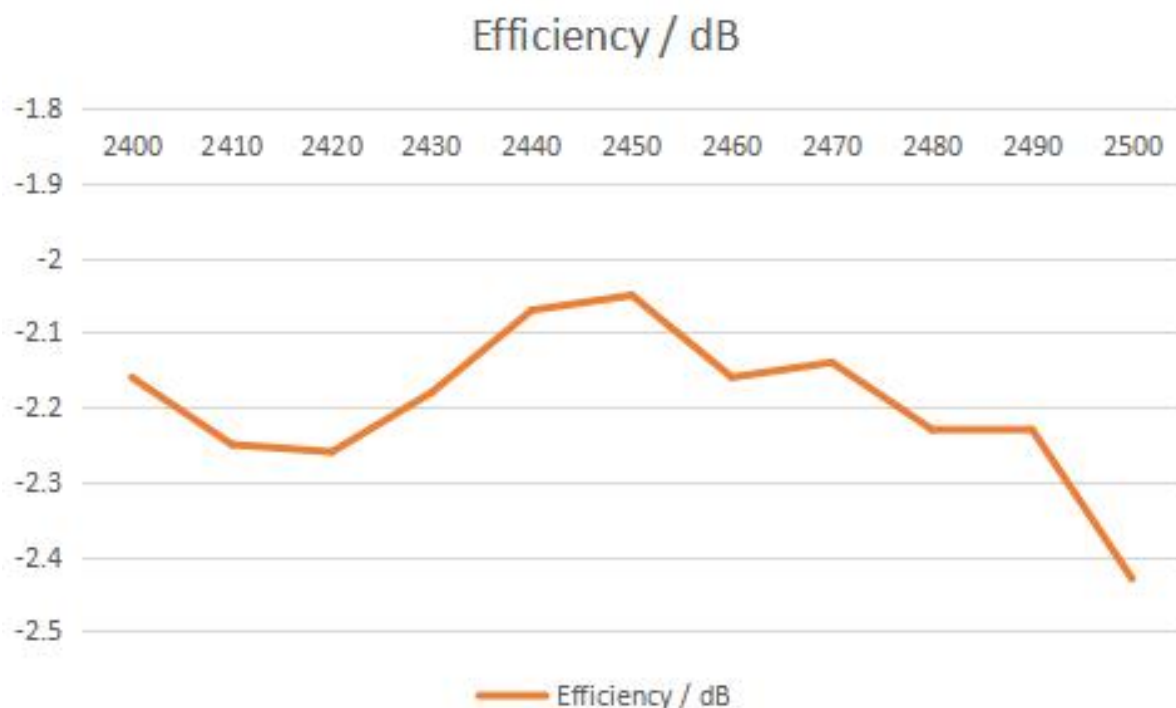
WIFI

Frequency / MHz	Efficiency / dB	Efficiency / %	Gain/ dBi
2400	-2.61	54.83	0.32
2410	-2.61	54.83	0.49
2420	-2.59	55.08	0.74
2430	-2.49	56.36	0.95
2440	-2.35	58.21	1.32
2450	-2.32	58.61	1.4
2460	-2.39	57.68	1.59
2470	-2.35	58.21	1.88
2480	-2.36	58.08	2.03
2490	-2.3	58.88	2.23
2500	-2.41	57.41	2.03

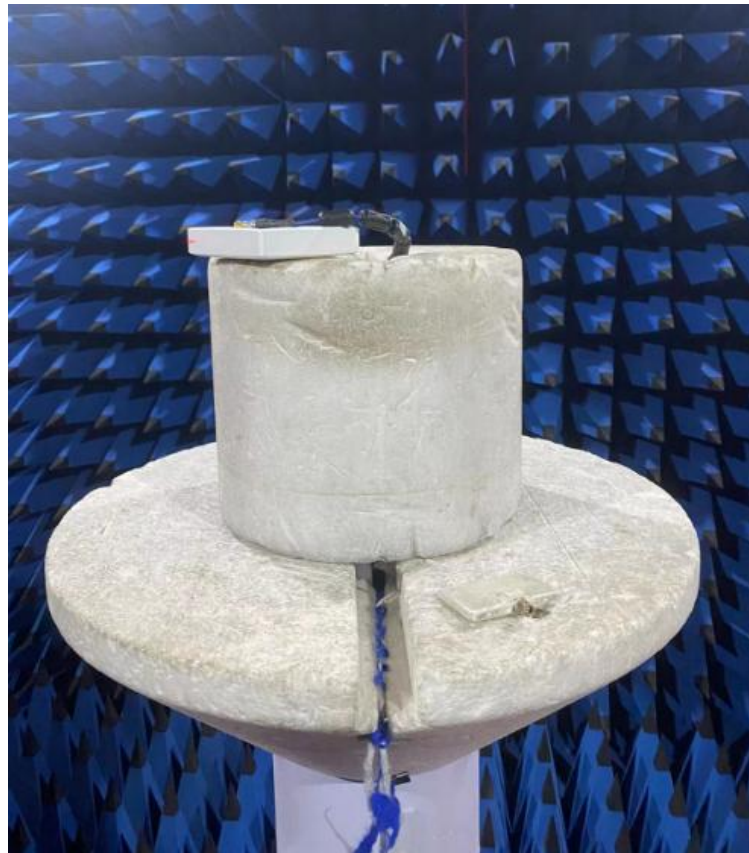
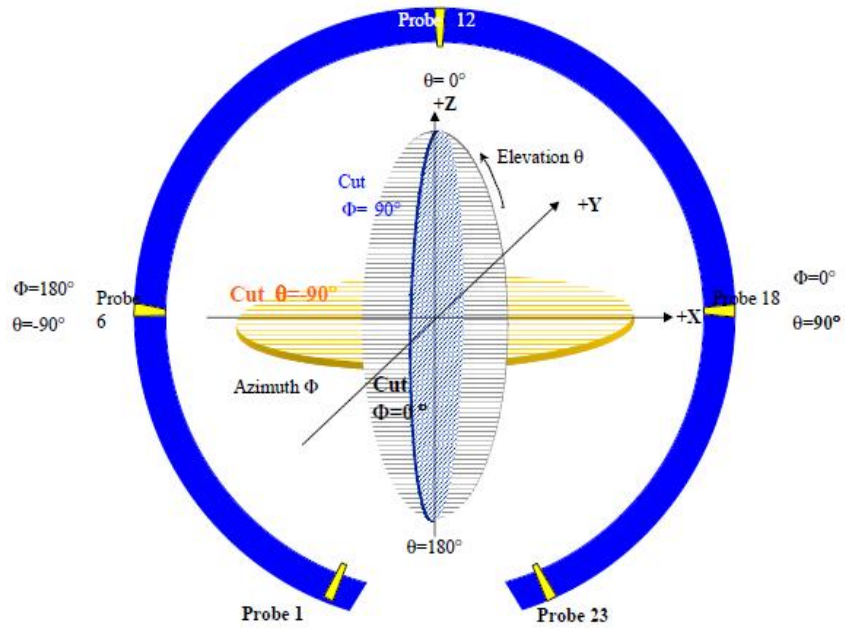


BT

Frequency / MHz	Efficiency / dB	Efficiency / %	Gain/ dBi
2400	-2.16	60.81	1.94
2410	-2.25	59.57	2
2420	-2.26	59.43	2.32
2430	-2.18	60.53	2.6
2440	-2.07	62.09	3.02
2450	-2.05	62.37	3.29
2460	-2.16	60.81	3.33
2470	-2.14	61.09	3.48
2480	-2.23	59.84	3.09
2490	-2.23	59.84	2.98
2500	-2.43	57.15	2.39

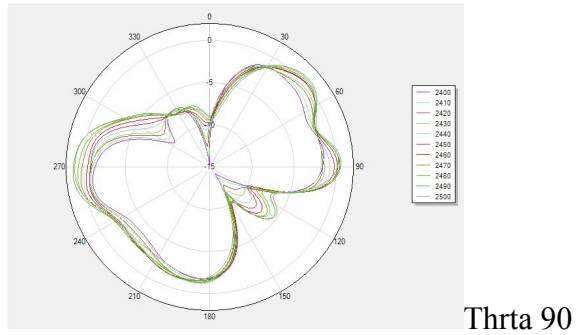
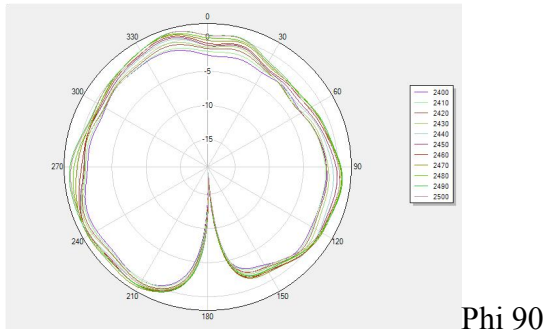
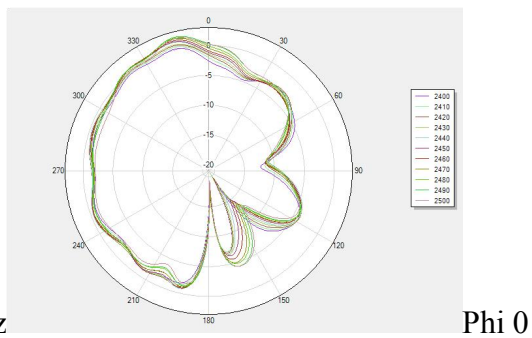
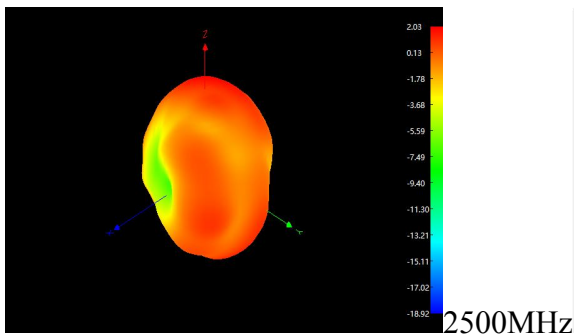
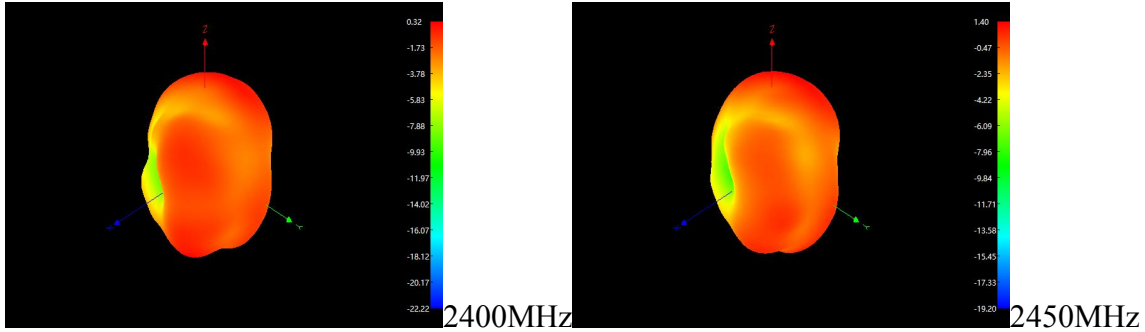


Darkroom coordinates



4.3: Antenna 2/3D Radiation Pattern

WIFI



BT

