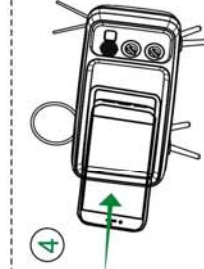
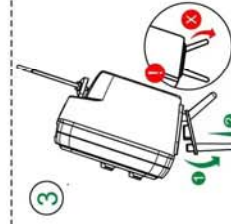
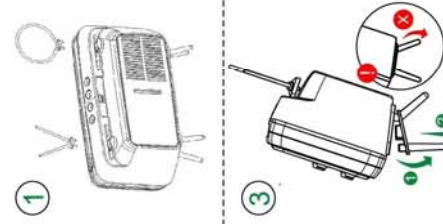


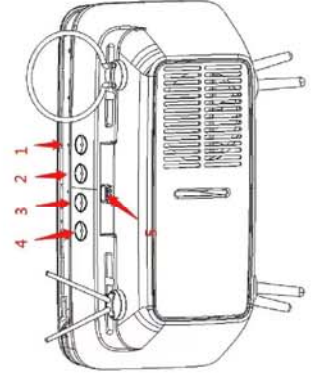
# 85x157mm

1. Working Range Effective 10m
2. Working Time  $\geq 6$  Hours
3. Loud Speaker Output : 5W
4. Speaker : ( $\Phi$ )52mm 4 $\Omega$
5. Distortion :  $\leq 0.5\%$
6. Signal-To-Noise :  $\geq 90$ dB
7. Frequency Response : 50Hz-22KHz
8. Voltage Capacity : 1200mAh
9. Charging Voltage : 5V $\pm$ 0.25V
10. Charge Time :  $\geq 4$ Hours
11. Net Weight : 450g



Handling instruction:  
Press and hold the power-on key to turn on the Bluetooth speaker; Find TV-Q02 and click Connect.

1. Press and hold for 3 seconds to turn on the computer, and press and hold for a short time to switch the sound effects.
2. Press the volume down for a long time, and press the previous song for a short time.
3. Press once for pause/play, and press for 3 seconds to disconnect Bluetooth.
4. Press the volume for a long time, and press it once for the next song.
5. Speaker charging port



This device complies with part 15 of the FCC Rules. Operation is subject to the following two conditions: (1) this device may not cause harmful interference, and (2) this device must accept any interference received, including interference that may cause undesired operation.

Any changes or modifications not expressly approved by the party responsible for compliance could void the user's authority to operate the equipment.

**NOTE:** This equipment has been tested and found to comply with the limits for a Class B digital device, pursuant to Part 15 of the FCC Rules. These limits are designed to provide reasonable protection against harmful interference in a residential installation. This equipment generates, uses and can radiate radio frequency energy and, if not installed and used in accordance with the instructions, may cause harmful interference to radio communications. However, there is no guarantee that interference will not occur in a particular installation.

If this equipment does cause harmful interference to radio or television reception, which can be determined by turning the equipment off and on, the user is encouraged to try to correct the interference by one or more of the following measures:

- Reorient or relocate the receiving antenna.
- Increase the separation between the equipment and receiver.
- Connect the equipment into an outlet on a circuit different from that to which the receiver is connected.
- Consult the dealer or an experienced radio/TV technician for help.

The device has been evaluated to meet general RF exposure requirement. The device can be used in portable exposure condition without restriction