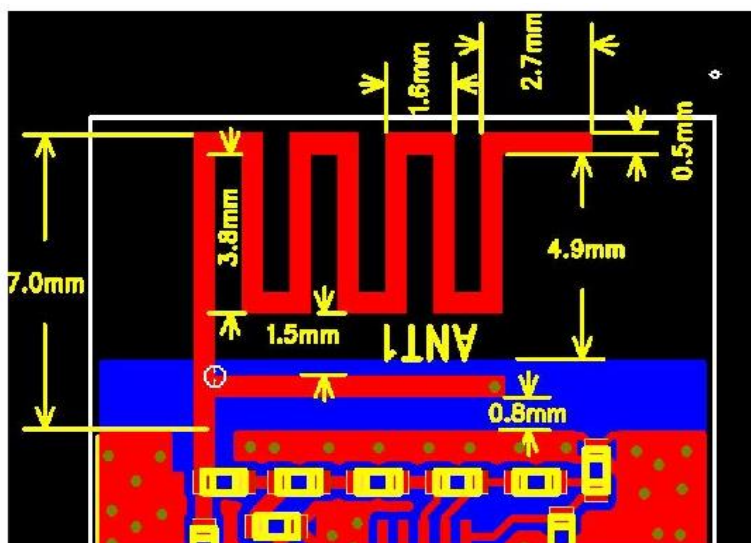


Antenna Specification

1. Summary

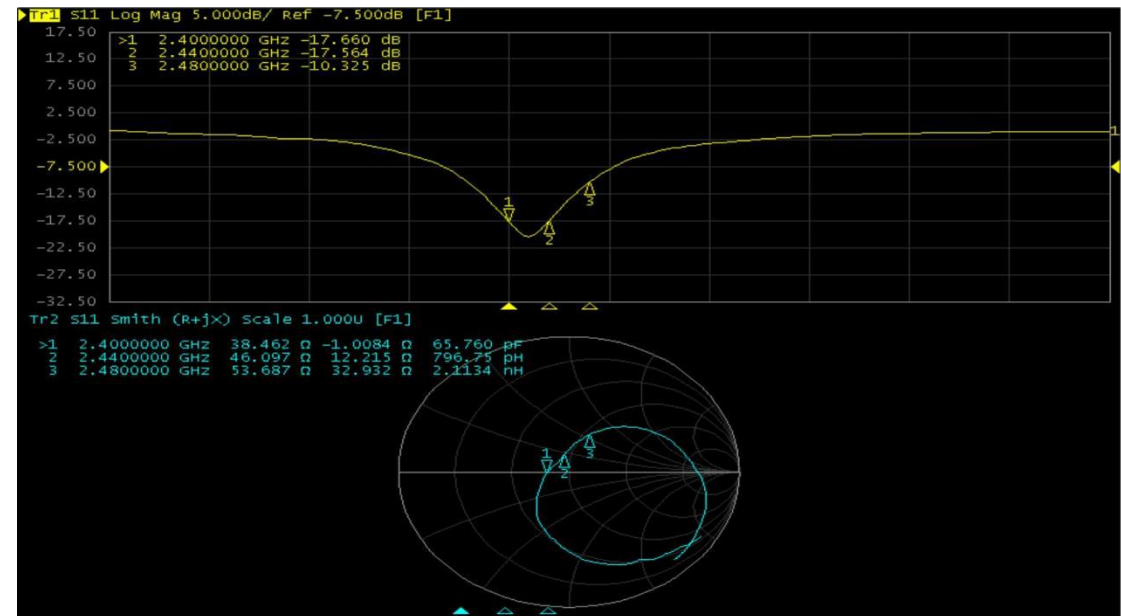
Item	Spec
Model Name:	2.4G Antenna
Antenna Type:	PCB Antenna
Frequency Range:	2400-2480MHz
MAX. Gain:	0.5dBi
Polarization:	Horizontal and Vertical
Impedance:	50 Ohm
Manufacturer:	K-tronics (Suzhou) Technology Co., Ltd.
Address:	No.1088, Dajing Road, Economic and Technological Development Zone, Wujiang District, Suzhou, 215200 Jiangsu, P.R. China

2. Antenna Photo & Dimensions



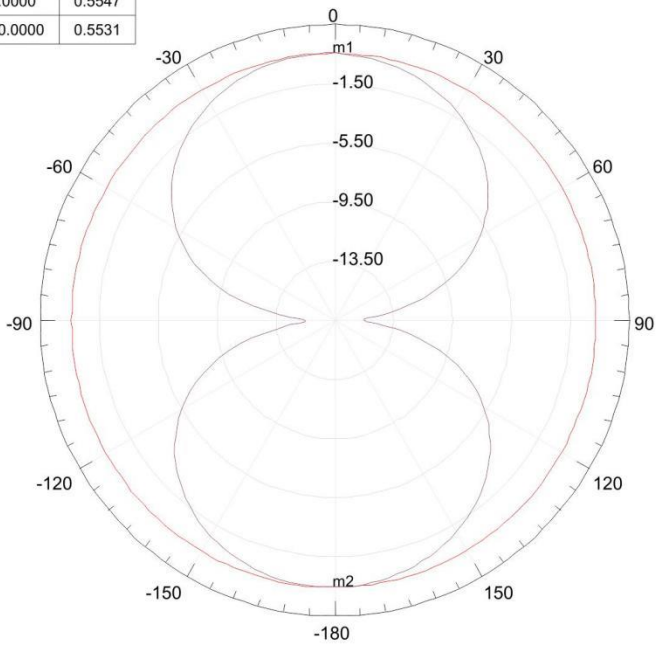
3. Antenna performance

Antenna performance S11 as below, working frequency cover the whole 2.4G ISM frequency bands.



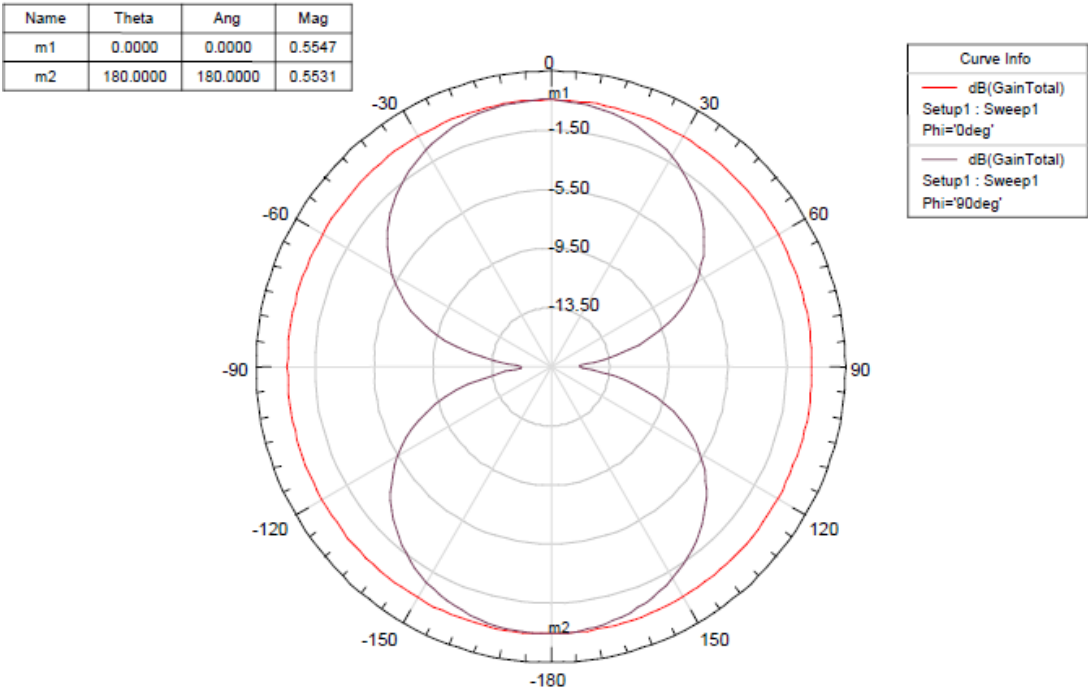
Normal Module Wiggle S11

Name	Theta	Ang	Mag
m1	0.0000	0.0000	0.5547
m2	180.0000	180.0000	0.5531



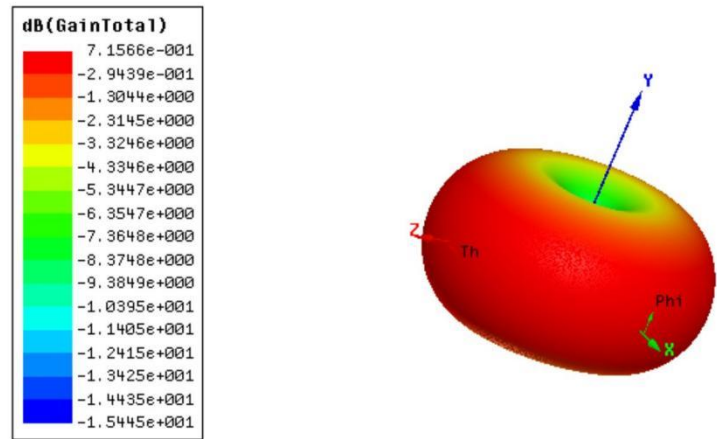
4. 2D Pattern

2D gain as below:



5. 3D Pattern

3D gain as below:



Normal Module Wiggle