

深圳旭航通讯科技有限公司

Shenzhen Xuhang Communication
Technology Co., Ltd

规格承认书

客户 CUSTOMER	
客户料号 CUSTOMER NO.	
供方品名 PART NAME	WIFI 天线
规格名称 SUPPLIER NO.	XH220109 (L=150mm)

CUSTOMER APPROVED BY		
APPROVAL	CHIEF	SUPERVISOR
SUPPLIER SIGNATURE		
DESIGN	CHECK	APPROVAL
LUO	SILVER	WANG

Date:August 29th,2022

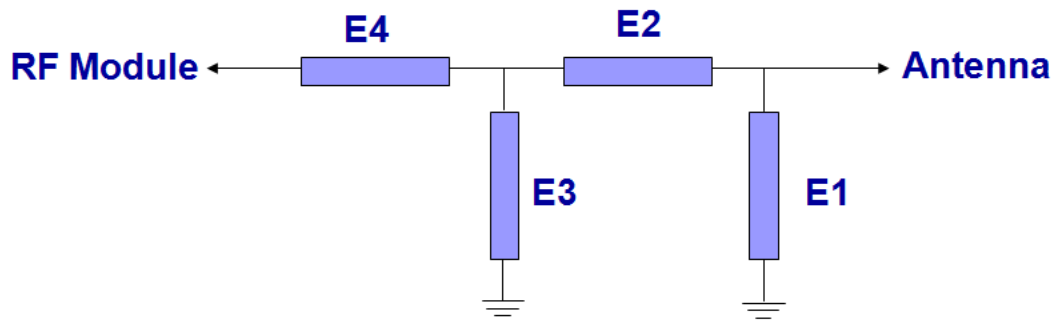
电性测试报告

TEST REPORTS

频率 Frequency	WIFI(2400~2500MHz)
阻抗 Impedance	50 Ohm Nominal
驻波比 V.S.W.R	≤2.0
回波损耗 Return Loss	-10dB Max
辐射 Radiation	Omni-directional
增益 Gain(Peak)	1.7dBi
极化方式 Polarization	Linear,Vertical
功率 Admitted Power	1W
连接器 Connector	I-PEX I
Physical Properties	
天线材质 Antenna Material	FPC
线材类型 Cable Type	O.D. 1.13mm
工作温度 Operating Temp.	-10-+60℃
存储温度 Storage Temp.	-10-+70℃
线材颜色 Cable Color	Black

匹配电路

Matching Circuits



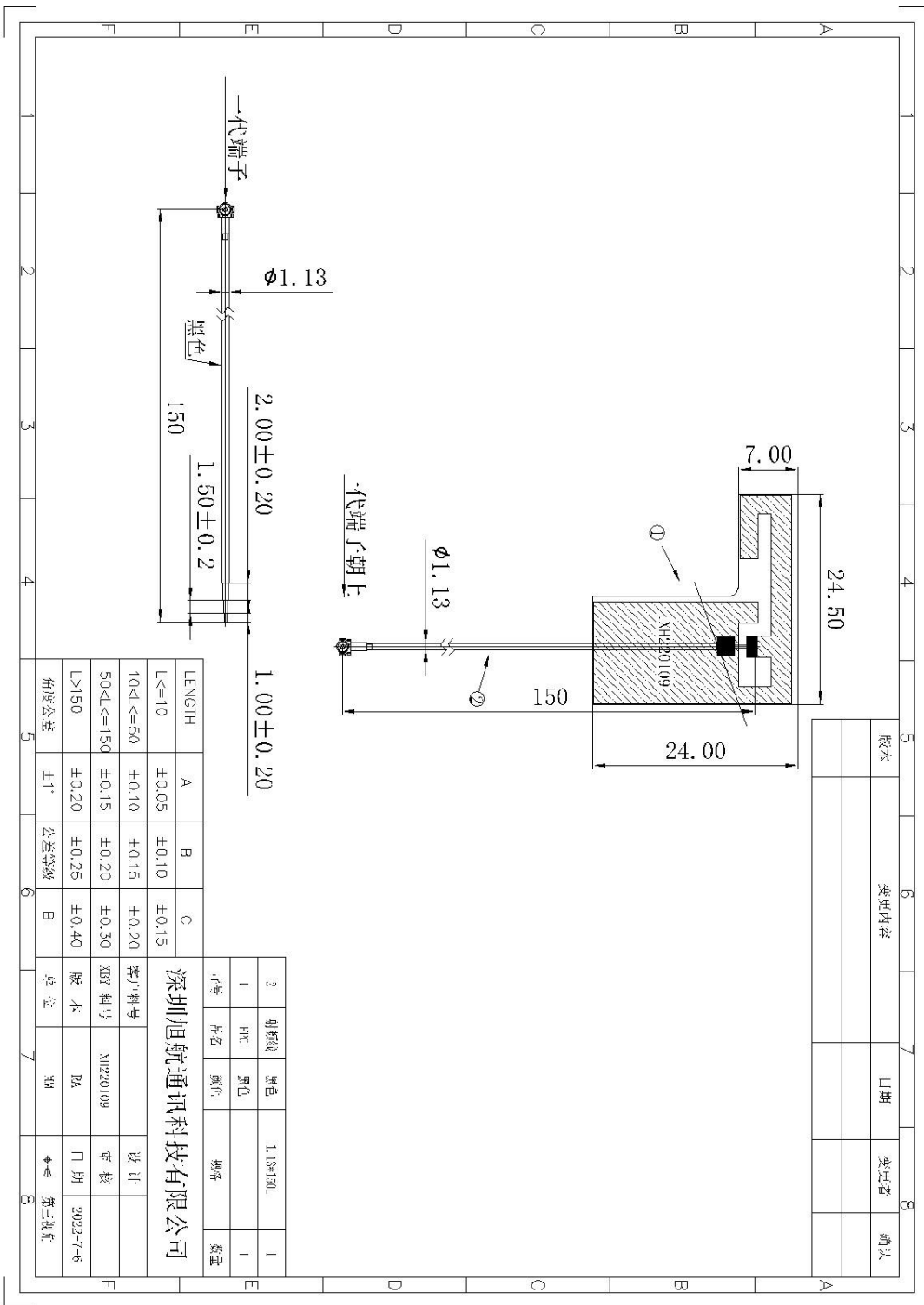
匹配电路

Element	Value	Vender
E1(0402)		
E2(0402)	0Ω	
E3(0402)		
E4(0402)	0Ω	

原匹配电路无修改

工程图

Engineering Drawings



测试数据

TEST DATA

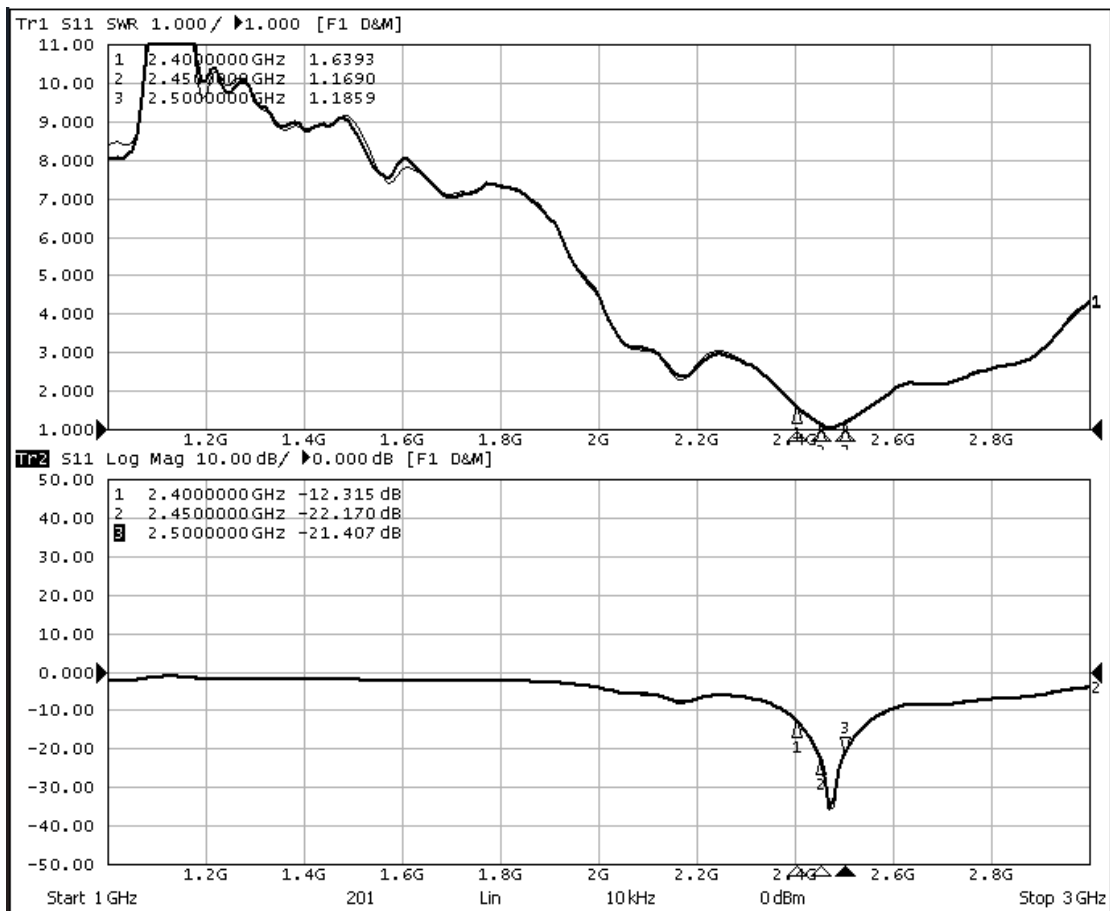
Application Information	
04Version	5.256.357
TotalTime	6m 35s 490ms
AdditionalInfor	802.11b : 1Mbps

Test Result	Wifi 2G TRP		
	1	6	11
Frequency (MHz)	2412	2437	2462
Txp Ave (dBm)	14.62	15.23	16.21
MAX (dBm)	18.42	18.98	20.46

Test Result	ifi 2G TI
	11
Frequency (MHz)	2462
Sens Ave (dBm)	-77.19
MaxPosSens	-81.31

无源数据

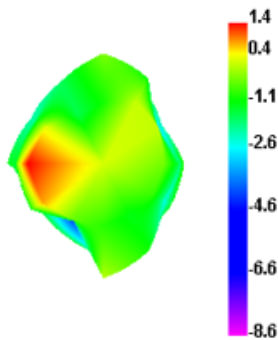
Passive test data



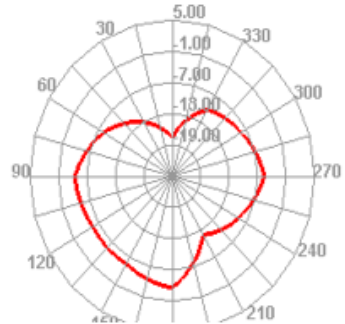
Freq (MHz)	Effi (%)	Gain (dBi)
2400	40.69	1.41
2410	42.4	1.45
2420	42.03	1.7
2430	41.08	1.38
2440	42.77	1.22
2450	43.04	0.96
2460	45.74	0.92
2470	46.95	1.01
2480	50.08	1.3
2490	54.07	1.63
2500	52.27	1.5

2400MHz

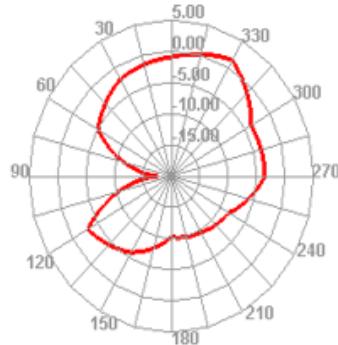
2400.000MHz



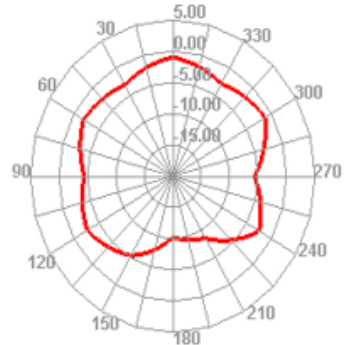
2400.000MHz H



2400.000MHz E1

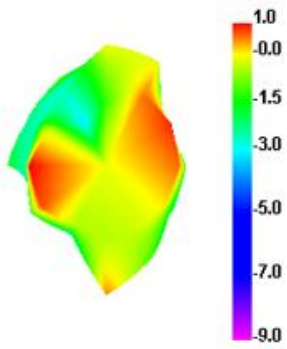


2400.000MHz E2

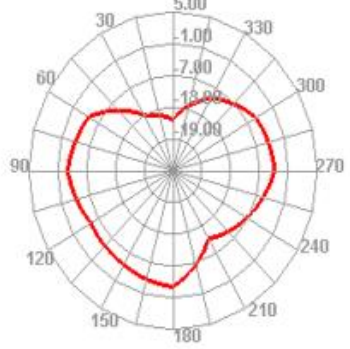


2450MHz

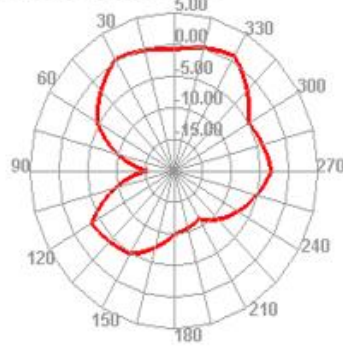
2450.000MHz



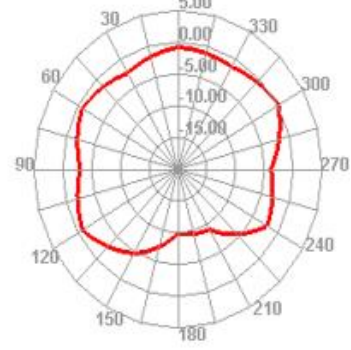
2450.000MHz H



2450.000MHz E1

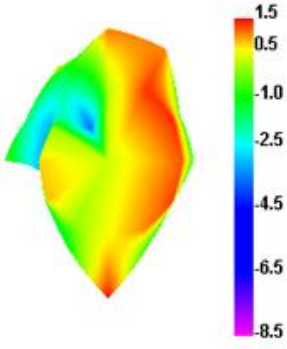


2450.000MHz E2

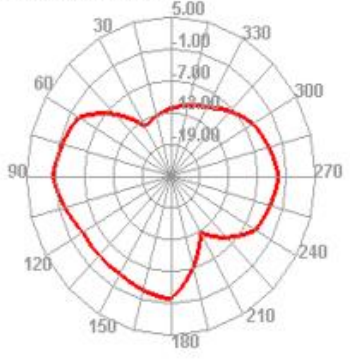


2500MHz

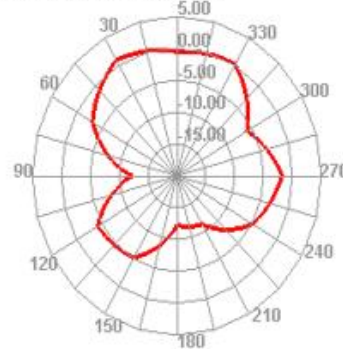
2500.000MHz



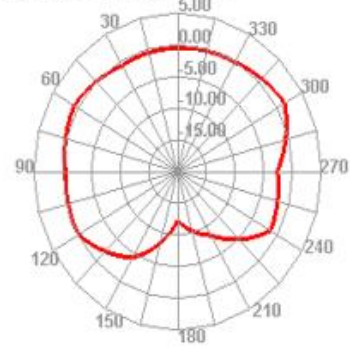
2500.000MHz H



2500.000MHz E1



2500.000MHz E2



装配位置

Assembly position



如图所示：方框处为天线装配位置，靠箭头骨位位置粘贴

As shown in the figure: the box is the antenna assembly position, and it is pasted by the arrow bone position