



**XR10 4K**

**USER GUIDE**

# Content

XR10 4K Introduction	1
Notice & Warning	2
Installation Notice	3
Product Guide	4
Product Accessories	6
Micro SD Card	7
Video Recording	8
Features	9
Wi-Fi and App Connectivity	11

Settings	14
Home Page	16
Playback	19
General Installation Guide	21
Troubleshooting	23
Disclaimer	24
Specification	25



## **XR10 4K**

Thank you for choosing Acumen. XR10 4K is designed to protect the driver and passengers by providing a better view of the rear traffic with a digital rearview mirror display. Acumen XR10 4K features industry-leading technology, such as ultra HD recording, seamless loop-recording, wide-angle camera, real-time playback, parking mode, WDR enhanced camera, impact sensor.

## Notice

As the specifications may be changed due to the technical upgrades, Acumen reserves the right to change, modify, add or remove portions of these terms at any time without prior notice. Please note that this product is for personal use only and may not be used in violation of national or international copyright/privacy laws. The recorded images are for personal use only and may not be distributed to the public. The use of this product to record images of performances, exhibitions or commercial activities may infringe the legal rights of the others.

## Warning

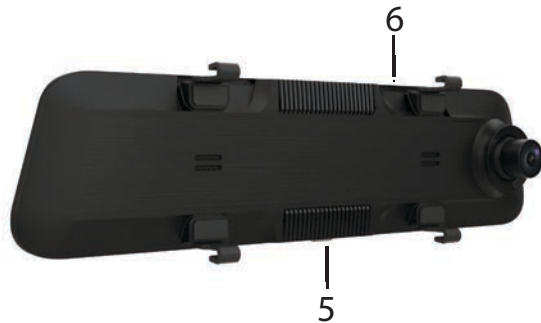
Disassembling the device may void the warranty.  
Please read the instruction carefully before installing or ask for professional help.  
Do not change any settings while driving only after the vehicle is parked.

## Installation Notice

This product should be installed onto the windshield in order to obtain the best view of the front traffic. However, some states prohibit drivers from mounting devices on the windshield or on certain area of the windshield. It is owner's responsibility to mount and use this device in compliance with local laws.

To ensure a good view in rainy environments please make sure the digital rearview mirror's front camera is placed behind the windshield area that is within the reach of the windshield wiper. Do not touch the lens with fingers and please clean the lens regularly. Please mount the rear camera near the license plate.

# Product Guide



# Product Guide

1	USB Port	Plug the power cable into the mini USB port.
2	Back Up camera	Plug the rear camera cable into this port.
3	Memory card slot	Micro SD memory card slot make sure it is inserted in the correct direction.
4	GPS Port	Plug the GPS antenna into this port.
5	Power Button	Press the power button to temporarily turn off screen, hold to turn the unit off.
6	Reset Button	Access the reset button with a pin to reboot the device.

# Product Accessories

The following items are product accessories. If there are any missing or damaged items, please contact seller immediately.



Hardwire Kit

Rear Camera with 32ft cable

GPS Antenna

Memory Card

USB Card Reader

User's Guide

Wiretap Clip

Rearview Mirror Rubber Bands



# Micro SD Card

1. Plug the memory card into the Micro SD Card slot:


Please follow the direction on the device to insert the memory card. Push in the micro SD card until it clicks and locks in place. XR10 4K is a high bit-rate dash cam and supports up to 128GB micro SD cards but requires class 10 or above micro SD card.

⚠ Note: Please format micro SD cards before use.

2. To remove the micro SD card press the memory card and the card will eject from the SD card slot.

⚠ Note: Do not remove or insert the card while the device is in use. Turn off the device before removing the card to avoid damaging the card.

# Video Recording

1. The device will automatically start recording when powered on. Normal recordings will stop after the car is off. Or use the REC button  on The XR10 4K to manually stop recording, use Power button to turn off the device.

Note: Choose either 1min, 2min, 3min video length in Settings ( set to 1min by default ), XR10 4K automatically deletes the oldest file when the memory card is full. Locked footage will not be overwritten and need to be manually deleted.

2. Event recording can be activated if the impact sensor is turned on, the impact sensor will trigger the camera to lock and protect footages if a collision is detected.

# Features

## Impact Sensor

With the Impact Sensor turned on, the dash cam will automatically lock and protect footages after collisions. The locked footages will not be overwritten by loop recording. You may change the sensitivity level in the settings to off, low, medium or high.

## Parking Time-Lapse Recording

With the hardwire kit installed parked time-lapse recording will automatically start recording for 8, 12 or 24 hours after the vehicle is turned off. Time-lapse footages can be found in playback.

## **GPS**

Visualize the location of your vehicle on the map during video playback and overlay speed on videos.

## **Parking Assist**

Connect the red cable of the backup camera power cable to the positive line of the vehicle's reverse light's power cable to automatically activate the parking lines when reversing. After turning on the car, the screen should display parking lines when shifted into reverse gear.

## **Reset**

If the dash cam freezes during use, you can perform a system reboot by pressing the RESET button using a pin or sim card remover.

# Wi-Fi and App Connectivity



Please download the AcumenCam app on your mobile devices to gain access to your footage without having to removing the SD card.

## ON XR10 4K

Please enter the XR10 4K settings menu and turn on Wi-Fi option. Once the option is turned on, you will find out the network name and password will be displayed on the Wi-Fi settings.



Wi-Fi      On ☒ Off

Wi-Fi Name      Acumen\_xxxx


Wi-Fi Password      xxxxxxxxxxxx

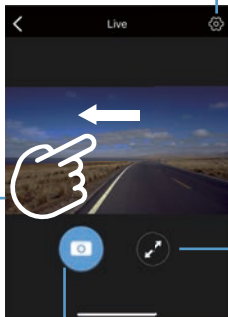
## ON YOUR MOBILE DEVICE

1. Download the AcumenCam application on your smartphone.
2. Navigate to the Wi-Fi setting on your smartphone.
3. Select the corresponding network name and enter the password. The initial password is “12345678”.
4. After the connection is established, enter the AcumenCam application on your smart phone and Click “Connect Device” you will have access to your footages.
5. Download videos to your phone at blazing speed.



# ACUMENCAM APP

Tap the icon  to enter Settings of the dashcam



Slide left to switch camera view

Tap capture button to take pictures


Tap the icon to enter full screen

Toggle between **Camera SD card** and phone storage. Footages will be available for playback **AFTER** downloading onto phone storage.

Use the **Select** option to select multiple footages to download or delete.

Toggle between Regular and Emergency footages.



Tap the  Playback icon to access your recording footages.

# Settings

**Resolution:** 3840 x 2160 (4K) Max.

**Footage Duration:** Choose the duration of each footage, between 1min , 2min or 3min.

**Time-Lapse Recording FPS:** Select the frame rate of time-lapse footages.

**Time-Lapse Recording Duration:** Select the duration of time-lapse footages.

**Impact Sensitivity:** Set impact sensitivity off, high, medium or low. High being most sensitive to impacts, may cause more footage to be protected.

**Audio Record:** Turn on / off the microphone.

**Clock Settings:** Adjust system clock.

**Watermark:** Turn on or off this feature to add or remove the Date/Time and device information watermark on the footage.



# Settings

**Frequency:** If you are located in the US please set it to 60Hz.

**Display Icons:** Show or remove the status icons from recording interface.

**Rear Camera Mirror:** Reflect the rear camera image horizontally.

**Rear Camera Rotation:** This allows for the rear camera to be mounted upside down.

**Language:** Select language.

**Button Press Sound:** Select on or off.

**Wi-Fi Settings:** Turn on / off the Wi-Fi function.

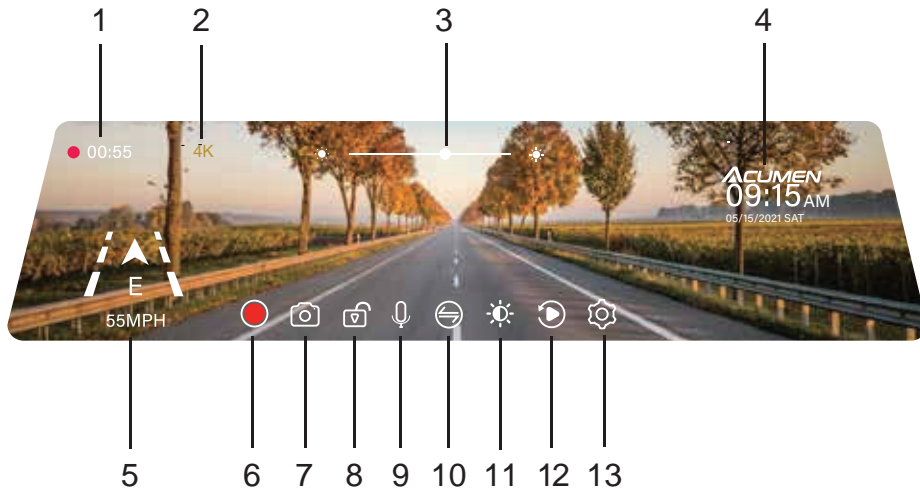
**Speed Unit:** Choose between MPH and KM/H

**Restore Factory Settings:** Restore to default settings.

**Format SD-Card:** Format SD card and delete all data on the current SD card.

**Firmware Version:** Display current firmware version.

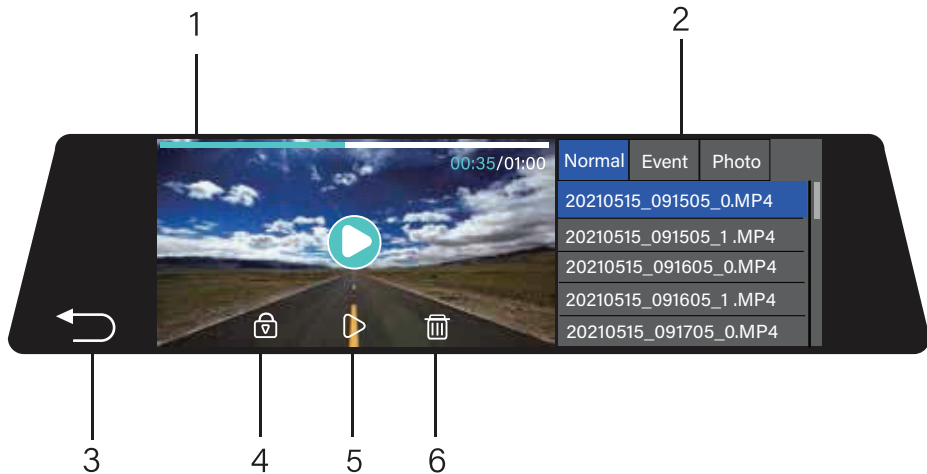
# Home page



1. Recording: The red dot indicates the camera is currently recording.
2. Resolution: Indicate the current recording resolution.
3. Brightness: Swipe left and right on the screen to adjust the display brightness.
4. Time and Date
5. Speed and Direction Info
6. Start and Pause: Tap this icon to start/pause recording
7. Photo: Tap this icon to capture a photo
8. Lock: Tap this icon to manually lock the current video. The locked video won't be overwritten by loop recording.
9. Microphone: Tap the microphone icon to turn on/off the microphone.
10. Switch camera view: Tap this icon to cycle through the different cameras installed.

11. Brightness: Tap this icon to bring up brightness adjustment. Swiping left and right on the mirror display will adjust display brightness.
12. Playback: Tap this icon to enter playback menu.
13. Settings: Tap the settings icon to enter settings menu.

# Playback



1. Video playback area: Selected video will be played here.
2. Select Camera View: Toggle between footages of Normal (Front and Rear) , Event and Photos.
3. Return: Return to main recording screen.
4. Lock/Unlock: Lock/unlock footages, locked footages will not get overwritten.
5. Play/Pause: Play or pause the selected footage.
6. Delete: Delete selected footages.

# General Installation Guide

The installation method will differ between different vehicle models and makes. Please watch our installation video on our website at **[www.acumen-camera.com](http://www.acumen-camera.com)** under **Footer** Menu click **Installation Guide**.

1. Please start by locating where the backup camera will be installed. We recommend installing a backup camera above your license plate.
2. Determine if there are any pre-drilled holes or spaces, if not you may have to remove truck trim pieces and drill as needed. Generally, the back up camera cable can be routed through the license plate light housing.
3. Mount the digital rearview mirror over the factory mirror with the included rubber straps. Determine wiring routes for the backup camera cable, the power supply cable as well as other cables.

# General Installation Guide

4. Once the cables have been routed, test the power by plugging in USB power to the device.
5. Once the reverse light's power cable is found, use a multimeter to determine the positive and negative wires of the reverse light power cable.
6. Attach the backup camera to the center area above the license plate and connect the rear camera cable to the rear camera module. Connect the external GPS and adhere the GPS Module to area on windshield that will not obstruct driver view.
7. Test the wiring by starting up the vehicle and check if the digital rearview mirror displays rear view clearly, adjust rear viewing angle by swiping finger up and down on the screen. Shift into reverse and check if the parking assist lines show, adjust parking lines by swiping fingers up and down on the screen.



# Troubleshooting

1. **Digital mirror dashcam does not power on:** Check if the cables are plugged in correctly; remove the memory card and reboot. Use the reset button if needed.
2. **Dashcam randomly stops recording or no longer overwrites old files:** Due to the large amount of video data, it is possible memory card cannot support the large amount of data. Please use Micro SD card(class 10 or above) to ensure seamless loop recording.
3. **Blurred footage:** Please clean all camera lenses regularly with microfiber cloth.
4. **The video quality is not consistent:** The video quality is subject to the lighting environment and strong glare may affect the video quality.
5. **There are streaks in the image:** Please try switching "Frequency" setting to 60Hz.
6. **Nothing is displaying:** Press the button on the bottom of the mirror. Check all cables are connected and are wired correctly. Press the reset button with a pin.

# Disclaimer

The audio and videos recorded by the dashcam are for reference only.

The following situations may damage or lose recorded footages:

1. Pulling out the SD card while recording may cause the last recorded file to be lost.
2. The last image or video may be damaged or lost, if the dashcam suddenly lost power.
3. If the vehicle experience a major collision, the dashcam may be damaged; thus the files and data may also be damaged or lost.
4. Major collision during recording may cause the memory card to loosen or disconnect which may lead to data loss. Acumen is not liable for any type of loss resulting from the use of this device.
5. You should not set/install this dash cam at a place that would obstruct or reduce a driver's view; make sure your usage complies with pertinent vehicle codes of your state, province, territory or country.

# Specification

Model Name	Acumen XR10 4K
Recording Resolution	3840 x 2160 (4K) Max
Footage Format	.MP4
Memory	Micro SD card up to 128GB C10 above
Power Supply	Included The Hardwire kit 5V 3A
Battery	Super Capacitor
Display	12in IPS Touch screen (1920*440)
Wi-Fi/GPS	Yes
Working Temperature	0°C~65°C / 32°F~149°F
Storage Temperature	-10°C~70°C / 14°F~158°F

### FCC Warning Statement

Changes or modifications not expressly approved by the party responsible for compliance could void the user's authority to operate the equipment. This equipment has been tested and found to comply with the limits for a Class B digital device, pursuant to Part 15 of the FCC Rules. These limits are designed to provide reasonable protection against harmful interference in a residential installation. This equipment generates uses and can radiate radio frequency energy and, if not installed and used in accordance with the instructions, may cause harmful interference to radio communications. However, there is no guarantee that interference will not occur in a particular installation. If this equipment does cause harmful interference to radio or television reception, which can be determined by turning the equipment off and on, the user is encouraged to try to correct the interference by one or more of the following measures:

- - Reorient or relocate the receiving antenna.
- - Increase the separation between the equipment and receiver.
- - Connect the equipment into an outlet on a circuit different from that to which the receiver is connected.
- - Consult the dealer or an experienced radio/TV technician for help.

This device complies with part 15 of the FCC Rules. Operation is subject to the following two conditions: (1) This device may not cause harmful interference, and (2) this device must accept any interference received, including interference that may cause undesired operation.

### RF Exposure Statement

To maintain compliance with FCC's RF Exposure guidelines, This equipment should be installed and operated with minimum distance of 20cm the radiator your body. This device and its antenna(s) must not be co-located or operation in conjunction with any other antenna or transmitter.