

LIFETAIL

LIFETAIL SMART FEEDER

USER MANUAL



Contents

Warning	1
Troubleshooting Guide	1
Key Features	2
Listing of accessories	3
Product Overview	4-5
Before installation	7
Product installation	8
Product usage	9
Key description	10
Battery mode description	10
Conservation and cleaning	12
FAQ	13-14
Product Parameters	14
LIFETAIL after-sales service card (Please cut out the card and use it)	6-11

Warning

- The power adapter of this product must be used in accordance with national standards of the socket, and reliable grounding, do not remove or dismantle the power adapter under any circumstances.
- It is not Lifetail's responsibility if have any accident or losses caused by illegal operation.
- LIFETAIL reserves the right to interpret and modify this notice.

Troubleshooting Guide

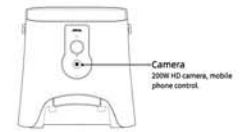
- Failure to follow the safety guide outlined below may result in device malfunction or other unexpected accidents.
- Only setup and use the device as instructed in the User's Manual.
- This device is not recommended for pets younger than 3 months.
- If children are using this device, please ensure that it is used with an adult.
- Please only use indoors. Do not place it in the place of sunlight, it will affect the function of the equipment, please keep it away from fire source.
- This device only uses a small amount of power, however it may still leak power if pets chew on the wire. Please guide the cat to use it correctly.
- Please use the correct power adapter to reduce the risk of fire or electric shock.
- Please make sure the device is placed on a level surface. Do not overturn the device, or it may not function properly.
- Do not drop all items except pet dry food into the food storage container, or the device will not function properly, and it may even endanger the safety of the pet.
- The main part of this product is forbidden to immerse or soak in water.
- If you want to stop using it, please turn off the power and remove the battery, unplug the power cable, wash and dry it, and then store it.
- In order to avoid unnecessary damage or injury, only repair technicians should be allowed to repair this device.
- If you have any problems with the product, please contact customer service in time 400-106-2818.

1

Key Features

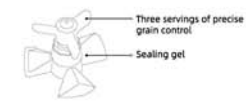
APP Smart System

- The LIFETAIL smart feeder is equipped with a 24-hour APP smart system, which can accurately monitor the amount of pet food, scientific regulation of feeding time, lack of food, stuck food and other abnormal situation alerts, always guarding the health of the pet.
- The video feeder is equipped with a camera, APP remote control to check the status of the pet at all times.



Brand new grain dispensing structure

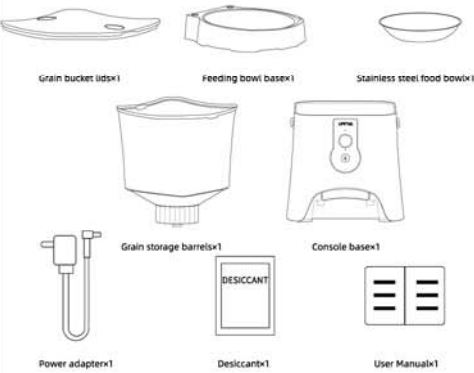
- For the sake of a healthier diet for pets, the new three-compartment grain dispensing design, accurate grain dispensing.
- Lock fresh technology, the grain outlet sealed up with the soft rubber baffle after the dispensing, which is conducive to the preservation of pet food for a long time and greatly retains the taste of pet grain.



2

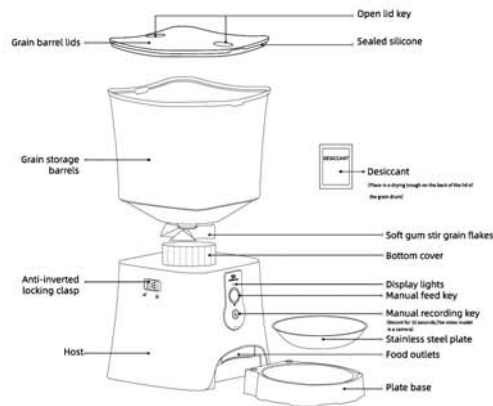
Listing Of Accessories

*Before setting up your device, please make sure you have all the necessary parts.



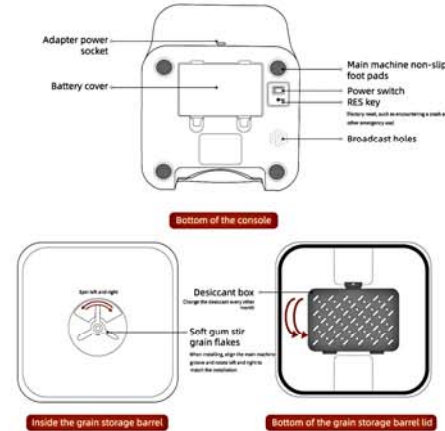
3

Product Overview



4

Product Overview



5

LIFETAIL Service Card

Warranty regulations

- Within 7 days from the date of purchase, the quality of the pet on the pet products, consumers can choose to return for a one-time refund in accordance with the invoice price or replace the product with the same model and specifications.
- Within 15 days from the date of purchase, the pet on the pet product quality problems, consumers can choose to replace the same model with the same specification products.
- All products purchased from Lifetail are guaranteed to keep in good repair for one year.
- This certificate shall not be altered, otherwise it is considered invalid.
- This certificate by the sales unit seal to take effect.

Non-warranty regulations

- No "three packages" certificate or the invoice is expired or has exceeded the "three packages" service period.
- Usage not in accordance with the operation instructions
- damage caused by fire, lightning, floods and other force majeure.
- warranty card on the product model or number does not match the physical.
- Damage caused by disassembly and repair by non-favorable authorized service providers.
- The normal fading, wear and tear and consumption of the product in the course of use, not a warranty failure.

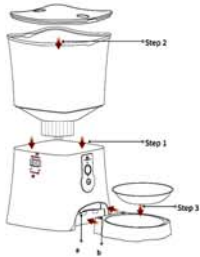
All products are under warranty.

6

Before Installation

I Install the host

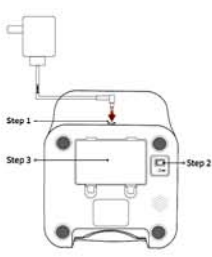
Step 1: Align the grain drum at the upper groove of the main unit. Rotate the soft glue in the grain drum left and right. The grain stirring tablets are finally calibrated, and after the seams are tightly closed, the anti-upside down lock is closed.
Step 2: Place the lid of the drum in the groove at the top of the drum and press the top of the lid of the drum partial/round lid key for installation.
Step 3: Place the stainless steel disc in the groove of the base of the dish. Then place the bottom of the plate. These edge groove points are aligned with the main machine outlet bulge a point. (As shown in the figure below)



7

II Connect the power adapter

Step 1: Remove the power adapter and plug it into the power adapter on the back of the console orchestration socket.
Step 2: Turn on the power switch and the display light is turned from red light to green light indicates that it is already in a working state.
Step 3: To install a spare battery, open the battery cover and install Good those D size batteries. Cover the battery cover after installation.
(Please purchase the installed battery by yourself)
*It is highly recommended to check and replace the battery before the small long holiday. Replace the battery in time when the battery is low.



Product Installation

I Open the upper cover

Buckle the lid button with your thumb and middle finger and press inward in the direction of the arrow. Lift the upper cover at the same time. (As shown)



II Add pet food

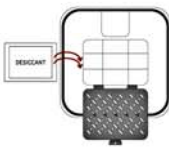
1. Add dry pet food (Do not exceed the Max line)
2. Cover the lid of the drum and press the Open lid button to restore it.
*It is recommended that the size of the pet food be less than 12mm.



8

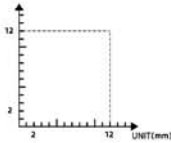
III Add desiccant

Open the desiccant box and remove the desiccant package and lay it evenly on the inside. Then cover the desiccant box.



IV Pet grain granule diameter

2mm ≤ Pet grain diameter < 12mm



9

Product Usage

I Connect to the app

Download apps from the App Store or Android App Market: Pet on the Pet APP.

Go to the "Homepage" of the App and click "+" to add the corresponding device. Tie as prompted Fixed equipment.

II App remote control of grain

A feeding schedule can be set within the App, and the feeder will follow

Set the plan to automatically deliver grain every day, and the owner can receive the push in time

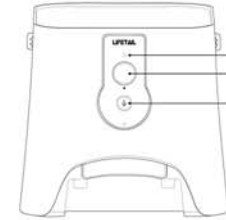
Send news and grasp the situation of grain production in a timely manner.

Scan the QR code to watch "LIFETAIL APP" Use the tutorial



Scan the code to download the "LIFETAIL APP"

Key Descriptions



Display lights
If it has a green light in normal working condition and will light up red if you encounter problems. Check the prompts on the phone APP to fix the problem and restore the green light.
Manual feed key
Double click the button to manually refill your pet.
Manual recording key (Record for 10s)
Keep pressing and holding the record key, "ding" after the sound of speaking recording, after saying the release of the recording key to complete Recording, after the recording is completed, will automatically play the recording call to the pet to eat when the food is delivered.

Battery Mode Description

Spare batteries take the new Nanfu battery as an example, this product is limited to alkaline batteries.

Model	Battery model	LED status	Endurance (battery backup)
WiFi Smart Feeder	D SIZE	WORKING STATUS: GREEN LIGHT	THE BATTERY LIFE IS ABOUT 5 DAYS
Video smart feeder		PROBLEM STATUS: RED LIGHT	THE BATTERY LIFE IS ABOUT 3 DAYS

10

Maintenance Records

The name of the repair center: _____
Repair center telephone: _____
Sending the repair date: _____
Cause of the obstacle: _____
Send for repair of fault conditions: _____
Refund certificate: _____
Signed by the maintenance personnel: _____
Repair center stamped: _____

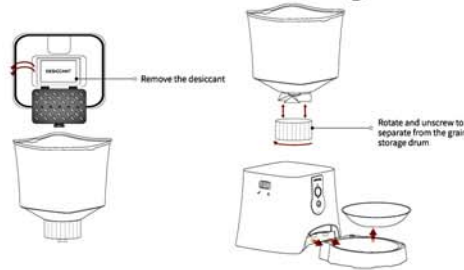
stamp

Scan the QR code
Download LIFETAIL APP for help

Service & Support
400-106-2818
WWW.PETSUPER.COM.CN

11

Conservation And Cleaning



1. Open the lid of the grain barrel, remove the desiccant, and then clean the lid of the grain barrel.
2. Remove the grain storage barrel, place the grain storage bucket on the horizontal surface, and rotate the bottom cover of the grain barrel clockwise to clean the grain storage bucket and the soft glue stirring grainflakes inside the grain barrel.
3. Remove the tray base, and clean the tray base and stainless steel tray separately.
4. It is recommended to add an appropriate amount of detergent and rinse well. Rinse well and leave in a ventilated place to dry. After drying, the whole machines installed.

*Note that the host should not be soaked or soaked in water, just wipe it with a dry towel.

Scan the code to watch the cleaning video

12

FAQ

I. About the fault of the power base:

1. Host base water: please find the power supply first, hold the level to the ventilation place for 12 hours (please note that do not reverse the base, so as to avoid the motherboard water), dry after restarting if the equipment still can not work, please contact customer service to deal with.
2. After replacing the battery, the base of the host is not reacting, please confirm whether the location/position/insert of the base is wet, and check whether the battery shape of the base has corrosion and yellowing and other undesirable phenomena. If the above phenomenon exists, please contact customer service.
3. In use, the device emits a "click" sound: the physical switching when the device automatically detects the battery voltage is normal.

II. About display light failure:

1. The display light is not lit after power: please reset or replace the original power adapter, if it is still not lit, please contact customer service.
2. After replacing the battery, the display light still shows red: Please check to make sure that three fully charged batteries have been replaced.
3. Can't reset after changing the desiccant (the mobile app has always prompted the warning that the desiccant needs to be replaced): Please confirm whether there are other problems with the feeder first. Or power off to restart reset. If you still can't reset, please contact customer service.
4. After adding pet food, there has been an alarm of insufficient surplus grain, which is a normal phenomenon, wait for five minutes to return to normal, if it cannot be restored, please power off and restart. Normal phenomenon: the equipment will only detect insufficient food and surplus grain accumulation when the feeder is working, in order to maximize the scientific feeding of pets, please follow the prompts accurately enter your pet's information to get a more accurate feeding plan.

III. About desiccants:

1. The desiccant is stored in a closed and dry environment in order to spoil the freshness of the grain. Please replace the desiccant on time according to the mobile phone prompts, so as not to affect the freshness of the pet food.
2. The desiccant fails to be packed in the drying box, and falls on the grain barrel pet grain, please check in time to avoid the desiccant blocking the detection port and causing the APP surplus grain information to be inaccurate.

13

FAQ

IV. ABOUT THE GRAIN FAILURE

1. Manual grain does not produce grain (1) please confirm whether the display light is a green light, if it is a red light, please follow the prompts on the APP to troubleshoot the problem (2) whether the pet grain barrel is installed in place. Check whether the grain storage bucket is tightly aligned with the main machine. If not aligned, please correct it in time. (when checking the working status of the host, be sure to do so in the power-off state) (3) whether the base of the food plate is installed in accordance with the specifications. If none of the above steps resolve the issue, please contact customer service.
2. Poor grain production: (1) Check whether the base of the food plate is accurately connected to the host (2) Check the grain production that may be caused by the soft glue stirring grain tablets in the grain storage barrel. Check the location of the card in time and restart the device (3) Please check whether the surplus grain is in sufficient, if the surplus grain is insufficient, please add it in time.
3. The recording of the food reminder is not played when the grain is released (1) Check whether the recording is complete in the APP, and whether the manual grain can be played completely after restarting the device (2) The sound is too small when recording, after re-tuning up the volume recording, restart the device and manually release the grain again, whether the recording is played normally.
4. Switch to battery mode after the power failure but the feeder does not produce food:
It belongs to the normal phenomenon: in battery mode, the display light is green, and if it is exactly in the sleep mode of the device, the motor will not work for a while; You can also manually produce grain and equipment immediate food delivery is normal.

Product Parameters

Product Name	WiFi Smart Feeder	Video smart feeder
Product model	PF01-1	PF01-2 (Attach a camera)
Product size	200*335*350mm	200*335*350mm
Applicable to pets	Cats and small dogs	Cats and small dogs
Product weight	1.68kg	1.68kg
Rated voltage	5VDC	5VDC
Rated power	2W	2W

14

FCC Caution:

This device complies with part 15 of the FCC Rules. Operation is subject to the following two conditions: (1) This device may not cause harmful interference, and (2) this device must accept any interference received, including interference that may cause undesired operation.

Any Changes or modifications not expressly approved by the party responsible for compliance could void the user's authority to operate the equipment.

Note: This equipment has been tested and found to comply with the limits for a Class B digital device, pursuant to part 15 of the FCC Rules. These limits are designed to provide reasonable protection against harmful interference in a residential installation. This equipment generates uses and can radiate radio frequency energy and, if not installed and used in accordance with the instructions, may cause harmful interference to radio communications. However, there is no guarantee that interference will not occur in a particular installation. If this equipment does cause harmful interference to radio or television reception, which can be determined by turning the equipment off and on, the user is encouraged to try to correct the interference by one or more of the following measures:

- Reorient or relocate the receiving antenna.
- Increase the separation between the equipment and receiver.
- Connect the equipment into an outlet on a circuit different from that to which the receiver is connected.
- Consult the dealer or an experienced radio/TV technician for help.

This equipment complies with FCC radiation exposure limits set forth for an uncontrolled environment. This equipment should be installed and operated with minimum distance 20cm between the radiator & your body.