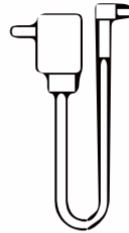


**Petsuper**

## MINI SMART FEEDER

## USER MANUAL

Model: PF02-3

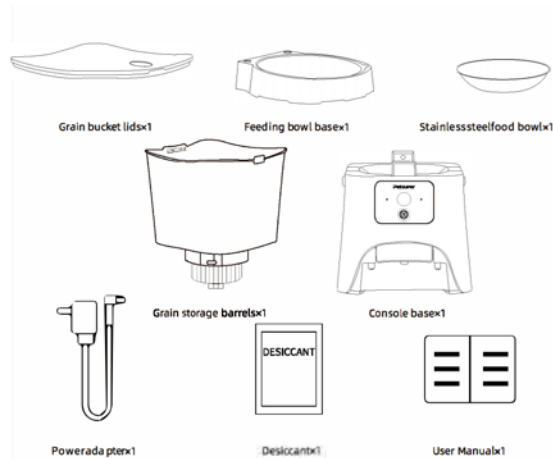


Poweradapterx1

Input:100-240V~, 50/60Hz



Listing Of Accessories



### Warning

. The power adapter of this product must be used in accordance with national standards of the socket, and reliable

grounding, do not remove or dismantle the power adapter under any circumstances.

. It is not Lifetail's responsibility if have any accident or losses caused by illegal operation.

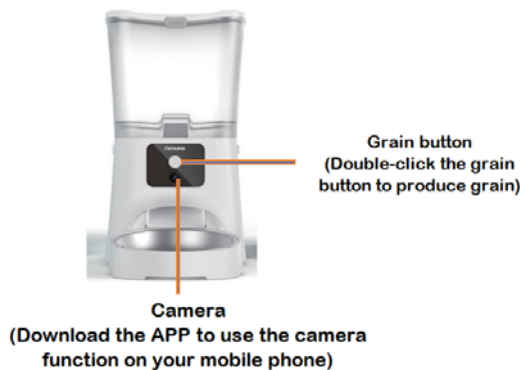
-LIFETAIL reserves the right to interpret and modify this notice.

# Troubleshooting Guide

- \* Failure to follow the safety guide outlined below may result in device malfunction or other unexpected accidents.
- Only set up and use the device as instructed in the User's Manual.
- This device is not recommended for pets younger than 3 months.
- If children are using this device, please ensure that it is used with an adult.
- Please only use indoors. Do not place it in the place of sunlight, it will affect the function of the equipment, please keep it away from fire source.
- This device only uses a small amount of power, however it may still leak power if pets chew on the wire. Please guide the cat to use it correctly.
- Please use the correct power adapter to reduce the risk of fire or electric shock.
- Please make sure the device is placed on a level surface. Do not overturn the device, or it may not function properly.
- Do not drop all items except pet dry food into the food storage container, or the device will not function properly, and it may even endanger the safety of the pet.
- The main part of this product is not intended to immerse or soak in water.
- If you want to stop using it, please turn off the power and remove the battery, unplug the power cable, wash and dry it, and then store it.
- In order to avoid unnecessary damage or injury, only repair technicians should be allowed to repair this device.
- If you have any problems with the product, please contact customer service in time 400-106-2818.

1

## Control Panel



## Before Installation

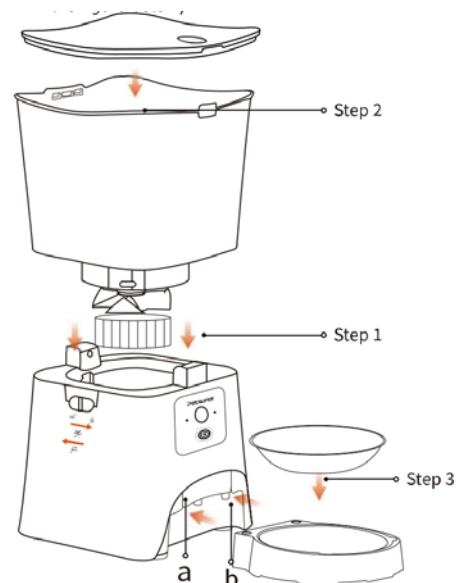
1 install the host

Step 1: Align the grain drum at the upper groove of the main unit.

Rotate the soft glue in the grain drum left and right. The grain stirring tablets are finally calibrated, and after the seams are tightly closed, the anti-upside down lock is closed.

Step 2: Place the lid of the drum in the groove at the top of the drum and press the top of the lid of the drum partial open lid key for installation.

Step 3: Place the stainless steel disc in the groove of the base of the dish. Then place the bottom of the plate these at edge groove b point is aligned with the main machine outlet bulge a point.



(As shown in the figure below)

## Connect the power adapter

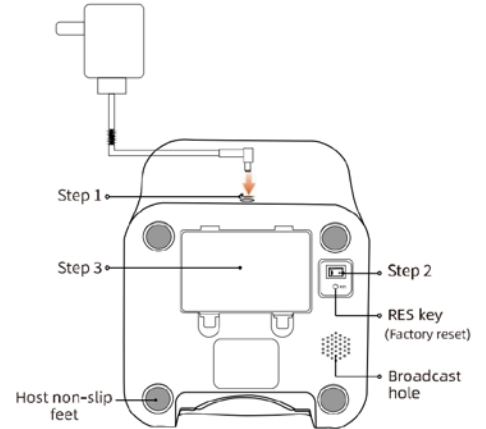
Step 1. Remove the power adapter and plug it into the power adapter on the back of the console orchestration socket.

Step 2. Turn on the power switch and the display light is turned from red light to green light indicates that it is already in a working state

Step 3. To install a spare battery, open the battery cover and install five AAA batteries. Cover the battery cover after installation.

(Please purchase the installed battery by yourself)

\*It is highly recommended to check and replace the battery before the small long holiday. Replace the battery in time when the battery is low.



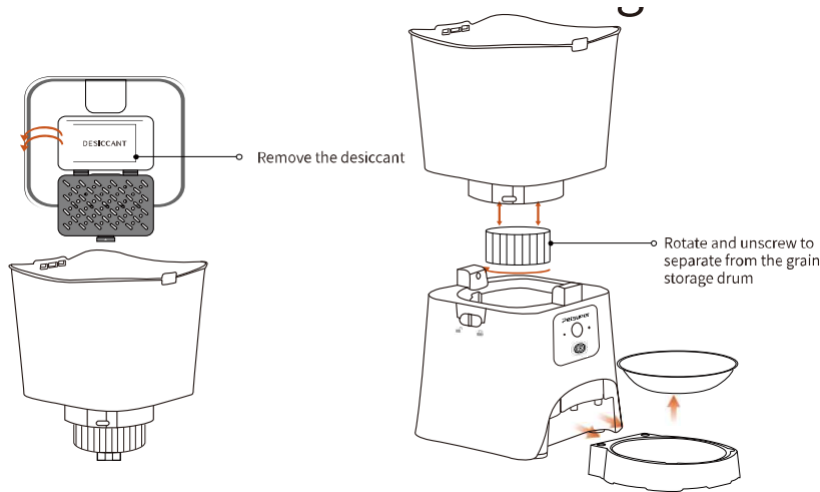
## Product Installation

Open the upper cover

Buckle the lid button with your thumb and middle finger and press inward in the direction of the arrow. Lift the upper cover at the same time. (As shown)



## Conservation And Cleaning



1. Open the lid of the grain barrel, remove the desiccant, and then clean the lid of the grain barrel.

2. Remove the grain storage barrel, place the grain storage bucket on the horizontal surface, and rotate the bottom cover

of the grain barrel clockwise to clean the grain storage bucket and the soft glue stirring grainflakes inside the grain barrel.

3. Remove the tray base, and clean the tray base and stainless steel tray separately.

4. It is recommended to add an appropriate amount of detergent and rinse well. Rinse

well and leave in a ventilated place to dry. After drying, the whole machine is installed

\* Note that the host should not be soaked or soaked in water, just wipe it with a dry towel.



Scan the code to watch the cleaning video

## Product Usage

Connect to the APP

Download apps from the App Store or Android App Market: Pet on the Pet APP



Scan the code to download the 'PETSUPER APP'



Scan the QR code to watch 'PETSUPER APP' Use the tutorial

## FAQ

I About the fault of the power base:

1. Host base water: please find the power supply first, hold the level to the ventilation place for 12 hours (please note that do not reverse the so as to avoid the motherboard water). After restarting, if the equipment still can not work, please contact customer service to deal with.
2. After replacing the battery, the base of the host is not reacting, please confirm whether the location environment of the base is wet. Check whether the battery shrapnel of the base has corrosion and yellowing and other undesirable phenomena. If the above phenomenon exists, contact customer service.
3. In use, the device emits a "click" sound: the physical switching when the device automatically detects the battery voltage is normal.

II About display light failure:

1. The display light is not lit after power: please reseat or replace the original power adapter, if it is still not lit, please contact customer service.
2. After replacing the battery, the display light still shows red: Please check to make sure that three fully charged batteries have been replaced.
3. Can't reset after changing the desiccant (the mobile app has always prompted the warning that the desiccant needs to be replaced): Please

power off to restart reset. If you still can't reset, please contact customer service.  
confirm whether there are other problems with the feeder first. Or p  
4. After adding pet food, there has been an alarm of insufficient surplus grain, which is a normal phenomenon, wait for five minutes to return to normal phenomenon: the equipment will only detect insufficient food and surplus normal, if it cannot be restored, please power off and restart. Normal the scientific feeding of pets, please follow the prompts accurately enter grain accumulation when the feeder is working, in order to maximize your pet's information to get a more accurate feeding plan.

### III About desiccants:

1. The desiccant is stored in a closed and dry environment in order to spoil the freshness of the grain. Please replace the desiccant on time according to the mobile phone prompts, so as not to affect the freshness of the pet food.  
2. The desiccant fails to be packed in the drying box, and falls on the grain barrel pet grain, please check in time to avoid the desiccant blocking the detection port and causing the APP surplus grain information to be inaccurate.

## | Petsuper After-Sales Service Card

### Warranty regulations

1. Within 7 days from the date of purchase, the quality of the pet on the pet products, consumers can choose to return for a one-time refund in accordance with the invoice price or replace the product with the same model and specifications.
2. Within 15 days from the date of purchase, the pet on the pet product quality problems, consumers can choose to replace the same model with the same specification products.
3. All products purchased from Lifetail are guaranteed to keep in good repair for one year.
4. This certificate shall not be altered, otherwise it is considered invalid.
5. This certificate by the sales unit seal to take effect.

### Non-warranty regulations

1. No "three packages" certificate or the invoice is expired or has exceeded the "three packages" service period.
2. Usage not in accordance with the operation instructions.
3. Damage caused by fire, lightning, floods and other force majeure.
4. Warranty card on the product model or number does not match the physical.
5. Damage caused by disassembly and repair by non-favorable authorized service providers.
6. The normal fading, wear and tear and consumption of the product in the course of use, not a warranty failure.

## FCC WARNING

This device complies with part 15 of the FCC Rules. Operation is subject to the following two conditions: (1) this device may not cause harmful interference, and (2) this device must accept any interference received, including interference that may cause undesired operation.

Any changes or modifications not expressly approved by the party responsible for compliance could void the user's authority to operate the equipment.

NOTE: This equipment has been tested and found to comply with the limits for a Class B digital device, pursuant to Part 15 of the FCC Rules. These limits are designed to provide reasonable protection against harmful interference in a residential installation. This equipment generates, uses and can radiate radio frequency energy and, if not installed and used in accordance with the instructions, may cause harmful interference to radio communications.

However, there is no guarantee that interference will not occur in a particular installation.

If this equipment does cause harmful interference to radio or television reception, which can be determined by turning the equipment off and on, the user is encouraged to try to correct the interference by one or more of the following measures:

- Reorient or relocate the receiving antenna.
- Increase the separation between the equipment and receiver.
- Connect the equipment into an outlet on a circuit different from that to which the receiver is connected.
- Consult the dealer or an experienced radio/TV technician for help.

To maintain compliance with FCC's RF Exposure guidelines, This equipment should be installed and operated with minimum distance between 20cm the radiator your body: Use only the supplied antenna.