



Shenzhen Huaxia Testing Technology Co., Ltd.

1F., Block A of Tongsheng Technology Building, Huahui Road, Dalang Street, Longhua District, Shenzhen, China

Telephone: +86-755-26544737

Fax: +86-755-26648637

Website: www.cqa-cert.com

Report Template Version: V05

Report Template Revision Date: 2021-11-03

TEST REPORT

Report No.: CQASZ20221001765E-01
Applicant: ABN SYSTEMS INTERNATIONAL S.A.
Address of Applicant: Str. Marinariilor, nr. 31, Sector 1 Bucuresti, Romania
Equipment Under Test (EUT):
EUT Name: Flip True Wireless Stereo Earphones
Model No.: TLL511401, TLL511411
Test Model No.: TLL511401
Brand Name: TELLUR
FCC ID: 2A74I-M9
Standards: 47 CFR Part 15.247
Date of Receipt: 2022-10-18
Date of Test: 2022-10-24 to 2022-10-26
Date of Issue: 2022-10-27
Test Result: Pass*

* In the configuration tested, the EUT complied with the standards with above.

Tested By:

Lewis Zhou

(Lewis Zhou)

Reviewed By:

Timo Lei

(Timo Lei)

Approved By:

Jack Ai

(Jack Ai)



The test report is effective only with both signature and specialized stamp, The result(s) shown in this report refer only to the sample(s) tested. Without written approval of CQA, this report can't be reproduced except in full.

1 Version

Revision History of Report

Report No.	Version	Description	Issue Date
CQASZ20221001765E-01	Rev. 01	Initial report	2022-10-27

2 Test Summary

Test Item	Standard	Test Method	Class / Severity	Result
Antenna requirement	47 CFR Part 15.247		Part 15.203	Pass
Occupied Bandwidth	47 CFR Part 15.247	ANSI C63.10-2013, section 6.9.2	47 CFR 15.215(c)	Pass
Maximum Conducted Output Power	47 CFR Part 15.247	ANSI C63.10-2013, section 7.8.5	47 CFR 15.247(b)(1)	Pass
Channel Separation	47 CFR Part 15.247	ANSI C63.10-2013, section 7.8.2	47 CFR 15.247(a)(1)	Pass
Number of Hopping Frequencies	47 CFR Part 15.247	ANSI C63.10-2013, section 7.8.3	47 CFR 15.247(a)(1)(iii)	Pass
Dwell Time	47 CFR Part 15.247	ANSI C63.10-2013, section 7.8.4	47 CFR 15.247(a)(1)(iii)	Pass
Emissions in non-restricted frequency bands	47 CFR Part 15.247	7.8.8	47 CFR 15.247(d)	Pass
Emissions around the fundamental	47 CFR Part 15.247	ANSI C63.10-2013 section 6.6.4	47 CFR 15.247(d)	Pass
Emissions in restricted frequency bands (below 1GHz)	47 CFR Part 15.247	ANSI C63.10-2013 section 6.6.4	47 CFR 15.247(d)	Pass
Emissions in restricted frequency bands (above 1GHz)	47 CFR Part 15.247	ANSI C63.10-2013 section 6.6.4	47 CFR 15.247(d)	Pass
Conducted Emission at AC power line	47 CFR Part 15.247	ANSI C63.10-2013 section 6.2	47 CFR 15.207(a)	Pass

3 Contents

	Page
1 VERSION	2
2 TEST SUMMARY	3
3 CONTENTS	4
4 GENERAL INFORMATION	6
4.1 CLIENT INFORMATION	6
4.2 GENERAL DESCRIPTION OF EUT	6
4.3 DESCRIPTION OF SUPPORT UNITS	6
4.4 TEST MODE	6
4.5 TEST LOCATION	6
4.6 TEST FACILITY	6
4.7 DEVIATION FROM STANDARDS	7
4.8 ABNORMALITIES FROM STANDARD CONDITION	7
4.9 OTHER INFORMATION REQUESTED BY THE CUSTOMER	7
4.10 MEASUREMENT UNCERTAINTY (95% CONFIDENCE LEVELS, K=2)	7
5 EQUIPMENT LIST	8
6 EVALUATION RESULTS (EVALUATION)	13
6.1 ANTENNA REQUIREMENT	13
6.1.1 E.U.T. Operation:	13
6.1.2 Test Data:	14
7 RADIO SPECTRUM MATTER TEST RESULTS (RF)	14
1.1 CONDUCTED EMISSION AT AC POWER LINE	14
1.1.1 E.U.T. Operation:	14
1.1.2 Test Setup Diagram:	15
1.1.3 Test Data:	16
7.1 OCCUPIED BANDWIDTH	18
7.1.1 E.U.T. Operation:	19
7.1.2 Test Setup Diagram:	19
7.1.3 Test Data:	20
7.2 MAXIMUM CONDUCTED OUTPUT POWER	20
7.2.1 E.U.T. Operation:	20
7.2.2 Test Setup Diagram:	21
7.2.3 Test Data:	22
7.3 CHANNEL SEPARATION	22
7.3.1 E.U.T. Operation:	22
7.3.2 Test Setup Diagram:	23
7.3.3 Test Data:	24
7.4 NUMBER OF HOPPING FREQUENCIES	24
7.4.1 E.U.T. Operation:	24
7.4.2 Test Setup Diagram:	25
7.4.3 Test Data:	26
7.5 DWELL TIME	26
7.5.1 E.U.T. Operation:	26
7.5.2 Test Setup Diagram:	27
7.5.3 Test Data:	28
7.6 EMISSIONS IN NON-RESTRICTED FREQUENCY BANDS	28
7.6.1 E.U.T. Operation:	28
7.6.2 Test Setup Diagram:	29
7.6.3 Test Data:	30

7.7 EMISSIONS AROUND THE FUNDAMENTAL	30
7.7.1 E.U.T. Operation:	30
7.7.2 Test Data:	31
7.8 EMISSIONS IN RESTRICTED FREQUENCY BANDS (BELOW 1GHZ)	32
7.8.1 E.U.T. Operation:	32
7.8.2 Test Data:	33
7.9 EMISSIONS IN RESTRICTED FREQUENCY BANDS (ABOVE 1GHZ)	35
7.9.1 E.U.T. Operation:	35
7.9.2 Test Data:	36
8 TEST SETUP PHOTOS	39
9 PHOTOGRAPHS OF EUT	42
9.1 APPENDIX A: 20DB EMISSION BANDWIDTH	51
9.1.1 Test Result	51
9.1.2 Test Graphs	52
9.2 APPENDIX B: OCCUPIED CHANNEL BANDWIDTH	55
9.2.1 Test Result	55
9.2.2 Test Graphs	56
9.3 APPENDIX C: MAXIMUM CONDUCTED OUTPUT POWER	59
9.3.1 Test Result	59
9.3.2 Test Graphs	60
9.4 APPENDIX D: CARRIER FREQUENCY SEPARATION	63
9.4.1 Test Result	63
9.4.2 Test Graphs	64
9.5 APPENDIX E: TIME OF OCCUPANCY	65
9.5.1 Test Result	65
9.5.2 Test Graphs	66
9.6 APPENDIX F: NUMBER OF HOPPING CHANNELS	71
9.6.1 Test Result	71
9.6.2 Test Graphs	72
9.7 APPENDIX G: BAND EDGE MEASUREMENTS	73
9.7.1 Test Result	73
9.7.2 Test Graphs	74
9.8 APPENDIX H: CONDUCTED SPURIOUS EMISSION	77
9.8.1 Test Result	77
9.8.2 Test Graphs	78

4 General Information

4.1 Client Information

Applicant:	ABN SYSTEMS INTERNATIONAL S.A.
Address of Applicant:	Str. Marinariilor, nr. 31, Sector 1 Bucuresti, Romania
Manufacturer:	Ganzhou Taote Trading Co., Ltd.
Address of Manufacturer:	3/F, Block C, Hongdu commercial building, Baoan 45 district, Shenzhen
Factory:	SHENZHEN CITY ENKOR ELECTRONICS LTD
Address of Factory:	the 2nd&3rd floor, Building P and building Q, Shengguang Ind.park, 152#Donghuan Road, Huangpu Xinqiao street, Bao'an District, Shenzhen, China

4.2 General Description of EUT

Product Name:	Flip True Wireless Stereo Earphones
Model No.:	TLL511401, TLL511411
Test Model No.:	TLL511401
Trade Mark:	TELLUR
Power Supply:	Li-ion battery DC 3.7V 25mAh, Charge by DC 5V for Charge box
Operation Frequency:	2402MHz to 2480MHz
Number of Channels:	79
Modulation Type:	GFSK, $\pi/4$ DQPSK
Antenna Type:	Chip
Antenna Gain:	2.58dBi

4.3 Description of Support Units

The EUT was tested as an independent device.

4.4 Test Mode

No	Title	Description
TM1	TX-GFSK (Non-Hopping)	Keep the EUT in continuously transmitting mode (non-hopping) with GFSK modulation.
TM2	TX-Pi/4DQPSK (Non-Hopping)	Keep the EUT in continuously transmitting mode (non-hopping) with Pi/4DQPSK modulation.
TM3	TX-GFSK (Hopping)	Keep the EUT in continuously transmitting mode (hopping) with GFSK modulation,.
TM4	TX-Pi/4DQPSK (Hopping)	Keep the EUT in continuously transmitting mode (hopping) with Pi/4DQPSK modulation.

4.5 Test Location

Shenzhen Huaxia Testing Technology Co., Ltd.

1F., Block A of Tongsheng Technology Building, Huahui Road, Dalang Street, Longhua District, Shenzhen, China

4.6 Test Facility

The test facility is recognized, certified, or accredited by the following organizations:

- IC Registration No.: 22984-1

The 3m Semi-anechoic chamber of Shenzhen Huaxia Testing Technology Co., Ltd. has been registered by Certification and Engineering Bureau of Industry Canada for radio equipment testing

- CNAS (No. CNAS L5785)

CNAS has accredited Shenzhen Huaxia Testing Technology Co., Ltd. Shenzhen Branch EMC Lab to ISO/IEC 17025:2005 General Requirements for the Competence of Testing and Calibration Laboratories (CNAS-CL01 Accreditation Criteria for the Competence of Testing and Calibration Laboratories) for the competence in the field of testing.

- A2LA (Certificate No. 4742.01)

Shenzhen Huaxia Testing Technology Co., Ltd., Shenzhen EMC Laboratory is accredited by the American Association for Laboratory Accreditation(A2LA). Certificate No. 4742.01.

- FCC Registration No.: 522263

Shenzhen Huaxia Testing Technology Co., Ltd., Shenzhen EMC Laboratory has been registered and fully described in a report filed with the (FCC) Federal Communications Commission. The acceptance letter from the FCC is maintained in our files. Registration No.:522263

4.7 Deviation from Standards

None

4.8 Abnormalities from Standard Condition

None

4.9 Other Information Requested by the Customer

None.

4.10 Measurement Uncertainty (95% confidence levels, k=2)

Test Item	Measurement Uncertainty
Occupied Bandwidth	1.1%
RF Conducted Power	0.86dB
Duty Cycle	0.6 %
Conducted Spurious Emissions	0.86dB

5 Equipment List

Occupied Bandwidth					
Equipment	Manufacturer	Model No	Inventory No	Cal Date	Cal Due Date
RF cable(9KHz~40GHz)	CQA	RF-01	CQA-079	2022-09-09	2023-09-08
Power divider	MIDWEST	PWD-2533-02-SMA-79	CQA-067	2022-09-09	2023-09-08
high-low temperature chamber	Auchno	OJN-9606	CQA-CB2	2022-09-09	2023-09-08
Signal generator	ANRITSU	MG3692B	CQA-019	2022-09-09	2023-09-08
Signal generator	R&S	SME06	CQA-024	2022-09-09	2023-09-08
Vector signal generator	R&S	SMBV100A	CQA-039	2022-09-09	2023-09-08
Power probe	KEYSIGHT	U2021XA	CQA-030	2022-09-09	2023-09-08
Coaxial Cable (Above 1GHz)	CQA	N/A	C019	2022-09-09	2023-09-08
Coaxial Cable (Below 1GHz)	CQA	N/A	C020	2022-09-09	2023-09-08
RF Cable (9KHz~40GHz)	CQA	N/A	C005	2022-09-09	2023-09-08

Maximum Conducted Output Power					
Equipment	Manufacturer	Model No	Inventory No	Cal Date	Cal Due Date
RF cable(9KHz~40GHz)	CQA	RF-01	CQA-079	2022-09-09	2023-09-08
Power divider	MIDWEST	PWD-2533-02-SMA-79	CQA-067	2022-09-09	2023-09-08
high-low temperature chamber	Auchno	OJN-9606	CQA-CB2	2022-09-09	2023-09-08
Signal generator	ANRITSU	MG3692B	CQA-019	2022-09-09	2023-09-08
Signal generator	R&S	SME06	CQA-024	2022-09-09	2023-09-08
Vector signal generator	R&S	SMBV100A	CQA-039	2022-09-09	2023-09-08
Power probe	KEYSIGHT	U2021XA	CQA-030	2022-09-09	2023-09-08
Coaxial Cable (Above 1GHz)	CQA	N/A	C019	2022-09-09	2023-09-08
Coaxial Cable (Below 1GHz)	CQA	N/A	C020	2022-09-09	2023-09-08
RF Cable (9KHz~40GHz)	CQA	N/A	C005	2022-09-09	2023-09-08

Channel Separation					
Equipment	Manufacturer	Model No	Inventory No	Cal Date	Cal Due Date

RF cable(9KHz~40GHz)	CQA	RF-01	CQA-079	2022-09-09	2023-09-08
Power divider	MIDWEST	PWD-2533-02-SMA-79	CQA-067	2022-09-09	2023-09-08
high-low temperature chamber	Auchno	OJN-9606	CQA-CB2	2022-09-09	2023-09-08
Signal generator	ANRITSU	MG3692B	CQA-019	2022-09-09	2023-09-08
Signal generator	R&S	SME06	CQA-024	2022-09-09	2023-09-08
Vector signal generator	R&S	SMBV100A	CQA-039	2022-09-09	2023-09-08
Power probe	KEYSIGHT	U2021XA	CQA-030	2022-09-09	2023-09-08
Coaxial Cable (Above 1GHz)	CQA	N/A	C019	2022-09-09	2023-09-08
Coaxial Cable (Below 1GHz)	CQA	N/A	C020	2022-09-09	2023-09-08
RF Cable (9KHz~40GHz)	CQA	N/A	C005	2022-09-09	2023-09-08

Number of Hopping Frequencies					
Equipment	Manufacturer	Model No	Inventory No	Cal Date	Cal Due Date
RF cable(9KHz~40GHz)	CQA	RF-01	CQA-079	2022-09-09	2023-09-08
Power divider	MIDWEST	PWD-2533-02-SMA-79	CQA-067	2022-09-09	2023-09-08
high-low temperature chamber	Auchno	OJN-9606	CQA-CB2	2022-09-09	2023-09-08
Signal generator	ANRITSU	MG3692B	CQA-019	2022-09-09	2023-09-08
Signal generator	R&S	SME06	CQA-024	2022-09-09	2023-09-08
Vector signal generator	R&S	SMBV100A	CQA-039	2022-09-09	2023-09-08
Power probe	KEYSIGHT	U2021XA	CQA-030	2022-09-09	2023-09-08
Coaxial Cable (Above 1GHz)	CQA	N/A	C019	2022-09-09	2023-09-08
Coaxial Cable (Below 1GHz)	CQA	N/A	C020	2022-09-09	2023-09-08
RF Cable (9KHz~40GHz)	CQA	N/A	C005	2022-09-09	2023-09-08

Dwell Time					
Equipment	Manufacturer	Model No	Inventory No	Cal Date	Cal Due Date
RF cable(9KHz~40GHz)	CQA	RF-01	CQA-079	2022-09-09	2023-09-08
Power divider	MIDWEST	PWD-2533-02-SMA-79	CQA-067	2022-09-09	2023-09-08

high-low temperature chamber	Auchno	OJN-9606	CQA-CB2	2022-09-09	2023-09-08
Signal generator	ANRITSU	MG3692B	CQA-019	2022-09-09	2023-09-08
Signal generator	R&S	SME06	CQA-024	2022-09-09	2023-09-08
Vector signal generator	R&S	SMBV100A	CQA-039	2022-09-09	2023-09-08
Power probe	KEYSIGHT	U2021XA	CQA-030	2022-09-09	2023-09-08
Coaxial Cable (Above 1GHz)	CQA	N/A	C019	2022-09-09	2023-09-08
Coaxial Cable (Below 1GHz)	CQA	N/A	C020	2022-09-09	2023-09-08
RF Cable (9KHz~40GHz)	CQA	N/A	C005	2022-09-09	2023-09-08

Emissions in non-restricted frequency bands					
Equipment	Manufacturer	Model No	Inventory No	Cal Date	Cal Due Date
RF cable(9KHz~40GHz)	CQA	RF-01	CQA-079	2022-09-09	2023-09-08
Power divider	MIDWEST	PWD-2533-02-SMA-79	CQA-067	2022-09-09	2023-09-08
high-low temperature chamber	Auchno	OJN-9606	CQA-CB2	2022-09-09	2023-09-08
Signal generator	ANRITSU	MG3692B	CQA-019	2022-09-09	2023-09-08
Signal generator	R&S	SME06	CQA-024	2022-09-09	2023-09-08
Vector signal generator	R&S	SMBV100A	CQA-039	2022-09-09	2023-09-08
Power probe	KEYSIGHT	U2021XA	CQA-030	2022-09-09	2023-09-08
Coaxial Cable (Above 1GHz)	CQA	N/A	C019	2022-09-09	2023-09-08
Coaxial Cable (Below 1GHz)	CQA	N/A	C020	2022-09-09	2023-09-08
RF Cable (9KHz~40GHz)	CQA	N/A	C005	2022-09-09	2023-09-08

Emissions around the fundamental					
Equipment	Manufacturer	Model No	Inventory No	Cal Date	Cal Due Date
Loop antenna	SCHWARZBECK	FMZB 1516	CQA-060	2021-09-16	2024-09-15
Horn Antenna	R&S	BBHA 9170	CQA-088	2021-09-16	2024-09-15
Horn Antenna	R&S	HF906	CQA-012	2021-09-16	2024-09-15
Bilog Antenna	R&S	HL562	CQA-011	2021-09-16	2024-09-15
EMI Test Receiver	R&S	ESR7	CQA-005	2022-09-09	2023-09-08
Spectrum analyzer	R&S	FSU26	CQA-038	2022-09-09	2023-09-08
Preamplifier	MITEQ	AMF-6D-02001800-	CQA-036	2022-09-09	2023-09-08

		29-20P			
Coaxial cable (1GHz~40GHz)	CQA	N/A	C007	2022-09-09	2023-09-08
Coaxial cable (9KHz~1GHz)	CQA	N/A	C013	2022-09-09	2023-09-08
Full anechoic chamber	CQA	966	CQA-009	2022-09-09	2023-09-08
Antenna Connector	CQA	RFC-01	CQA-080	2022-09-09	2023-09-08

Emissions in restricted frequency bands (below 1GHz)					
Equipment	Manufacturer	Model No	Inventory No	Cal Date	Cal Due Date
Loop antenna	SCHWARZBECK	FMZB 1516	CQA-060	2021-09-16	2024-09-15
Horn Antenna	R&S	BBHA 9170	CQA-088	2021-09-16	2024-09-15
Horn Antenna	R&S	HF906	CQA-012	2021-09-16	2024-09-15
Bilog Antenna	R&S	HL562	CQA-011	2021-09-16	2024-09-15
EMI Test Receiver	R&S	ESR7	CQA-005	2022-09-09	2023-09-08
Spectrum analyzer	R&S	FSU26	CQA-038	2022-09-09	2023-09-08
Preamplifier	MITEQ	AMF-6D-02001800-29-20P	CQA-036	2022-09-09	2023-09-08
Coaxial cable (1GHz~40GHz)	CQA	N/A	C007	2022-09-09	2023-09-08
Coaxial cable (9KHz~1GHz)	CQA	N/A	C013	2022-09-09	2023-09-08
Full anechoic chamber	CQA	966	CQA-009	2022-09-09	2023-09-08
Antenna Connector	CQA	RFC-01	CQA-080	2022-09-09	2023-09-08

Emissions in restricted frequency bands (above 1GHz)					
Equipment	Manufacturer	Model No	Inventory No	Cal Date	Cal Due Date
Loop antenna	SCHWARZBECK	FMZB 1516	CQA-060	2021-09-16	2024-09-15
Horn Antenna	R&S	BBHA 9170	CQA-088	2021-09-16	2024-09-15
Horn Antenna	R&S	HF906	CQA-012	2021-09-16	2024-09-15
Bilog Antenna	R&S	HL562	CQA-011	2021-09-16	2024-09-15
EMI Test Receiver	R&S	ESR7	CQA-005	2022-09-09	2023-09-08
Spectrum analyzer	R&S	FSU26	CQA-038	2022-09-09	2023-09-08
Preamplifier	MITEQ	AMF-6D-02001800-29-20P	CQA-036	2022-09-09	2023-09-08
Coaxial cable (1GHz~40GHz)	CQA	N/A	C007	2022-09-09	2023-09-08
Coaxial cable (9KHz~1GHz)	CQA	N/A	C013	2022-09-09	2023-09-08
Full anechoic	CQA	966	CQA-009	2022-09-09	2023-09-08

chamber					
Antenna Connector	CQA	RFC-01	CQA-080	2022-09-09	2023-09-08

Conducted Emission at AC power line					
Equipment	Manufacturer	Model No	Inventory No	Cal Date	Cal Due Date
EMI Test Receiver	R&S	ESPI3	CQA-013	2022-09-09	2023-09-08
LISN	R&S	ENV216	CQA-003	2022-09-09	2023-09-08
Coaxial cable (9KHz~300MHz)	CQA	N/A	C021	2022-09-09	2023-09-08
Shield room	CQA	843	CQA-008	2022-09-09	2023-09-08

6 Evaluation Results (Evaluation)

6.1 Antenna requirement

Test Requirement:	An intentional radiator shall be designed to ensure that no antenna other than that furnished by the responsible party shall be used with the device. The use of a permanently attached antenna or of an antenna that uses a unique coupling to the intentional radiator shall be considered sufficient to comply with the provisions of this section.
-------------------	--

6.1.1 E.U.T. Operation:

Operating Environment:	
Temperature:	25.4 °C
Humidity:	44.1 %
Atmospheric Pressure:	1016 mbar
Pre test mode:	TM1
Final test mode:	TM1

6.1.2 Test Data:

7 Radio Spectrum Matter Test Results (RF)

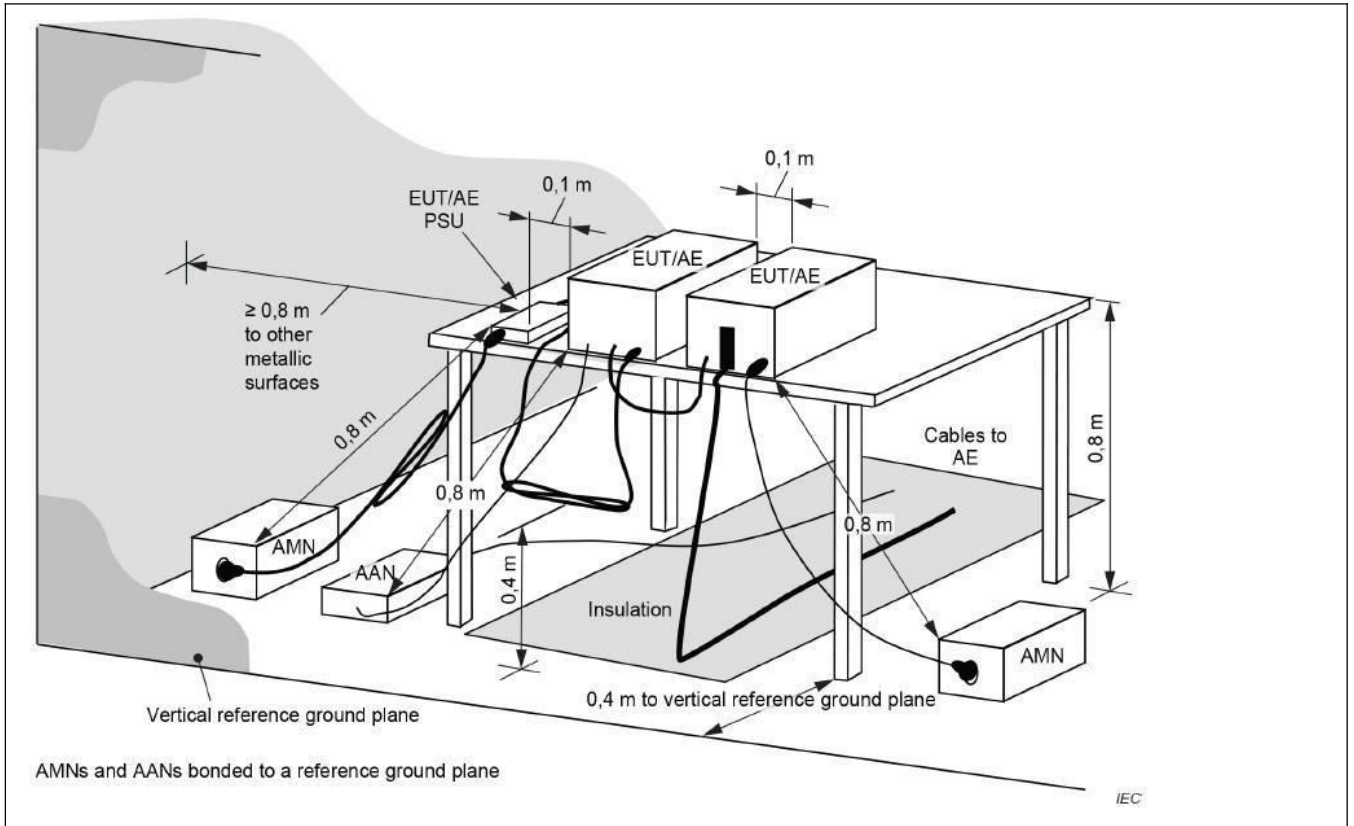
1.1 Conducted Emission at AC power line

Test Requirement:	Except as shown in paragraphs (b) and (c) of this section, for an intentional radiator that is designed to be connected to the public utility (AC) power line, the radio frequency voltage that is conducted back onto the AC power line on any frequency or frequencies, within the band 150 kHz to 30 MHz, shall not exceed the limits in the following table, as measured using a 50 μ H/50 ohms line impedance stabilization network (LISN).		
Test Method:	Refer to ANSI C63.10-2013 section 6.2, standard test method for ac power-line conducted emissions from unlicensed wireless devices		
Test Limit:	Frequency of emission (MHz)	Conducted limit (dB μ V)	
		Quasi-peak	Average
	0.15-0.5	66 to 56*	56 to 46*
	0.5-5	56	46
	5-30	60	50
*Decreases with the logarithm of the frequency.			

1.1.1 E.U.T. Operation:

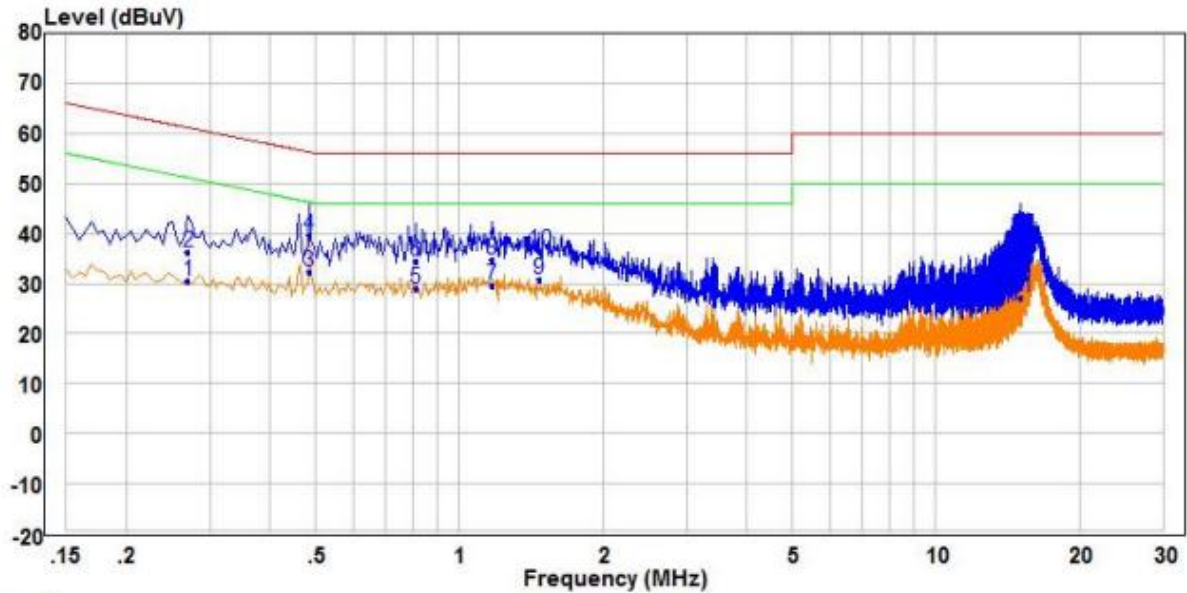
Operating Environment:	
Temperature:	25.2 °C
Humidity:	50.2 %
Atmospheric Pressure:	1013 mbar
Pre test mode:	TM1
Final test mode:	TM1

1.1.2 Test Setup Diagram:



1.1.3 Test Data:

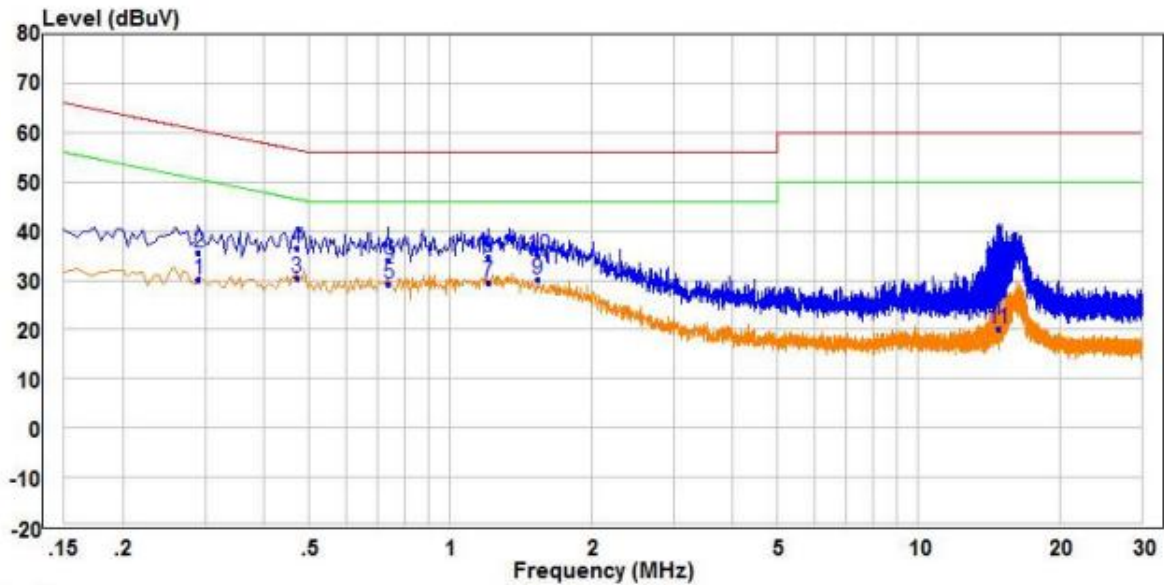
TM1 / Line: Line / Band: 2.4G / BW: 1 / CH: L



Trace: 1

	Freq.	Read Level	Factor	Level	Limit Line	Over Limit	Remark	Pol/Phase
	dBuV	dBuV	dBuV	dBuV	dBuV	dBuV		
1	0.27	21.08	9.39	30.57	51.12	-20.55	Average	Line
2	0.27	26.70	9.39	36.19	61.12	-24.93	QP	Line
3	0.49	22.79	9.42	32.31	46.25	-13.94	Average	Line
4	0.49	30.02	9.42	39.54	56.25	-16.71	QP	Line
5	0.81	19.33	9.51	29.07	46.00	-16.93	Average	Line
6	0.81	24.56	9.51	34.30	56.00	-21.70	QP	Line
7	1.17	20.10	9.42	29.63	46.00	-16.37	Average	Line
8	1.17	25.32	9.42	34.85	56.00	-21.15	QP	Line
9	1.47	21.20	9.40	30.72	46.00	-15.28	Average	Line
10	1.47	26.89	9.40	36.41	56.00	-19.59	QP	Line
11	15.10	17.28	9.76	27.17	50.00	-22.83	Average	Line
12	15.10	29.59	9.76	39.48	60.00	-20.52	QP	Line

TM1 / Line: Neutral / Band: 2.4G / BW: 1 / CH: L



Trace: 1

	Freq.	Read Level	Factor	Level	Limit Line	Over Limit	Remark	Pol/Phase
	dBuV	dBuV	dBuV	dBuV	dBuV	dBuV		
1	0.29	20.65	9.39	30.14	50.52	-20.38	Average	Neutral
2	0.29	26.07	9.39	35.56	60.52	-24.96	QP	Neutral
3	0.47	20.85	9.57	30.52	46.51	-15.99	Average	Neutral
4	0.47	26.75	9.57	36.42	56.51	-20.09	QP	Neutral
5	0.74	19.35	9.60	29.22	46.00	-16.78	Average	Neutral
6	0.74	24.28	9.60	34.15	56.00	-21.85	QP	Neutral
7	1.21	19.93	9.60	29.64	46.00	-16.36	Average	Neutral
8	1.21	25.12	9.60	34.83	56.00	-21.17	QP	Neutral
9	1.54	20.56	9.60	30.29	46.00	-15.71	Average	Neutral
10	1.54	25.40	9.60	35.13	56.00	-20.87	QP	Neutral
11	14.81	10.32	9.60	20.05	50.00	-29.95	Average	Neutral
12	14.81	22.85	9.60	32.58	60.00	-27.42	QP	Neutral

7.1 Occupied Bandwidth

Test Requirement:	Intentional radiators operating under the alternative provisions to the general emission limits, as contained in §§ 15.217 through 15.257 and in subpart E of this part, must be designed to ensure that the 20 dB bandwidth of the emission, or whatever bandwidth may otherwise be specified in the specific rule section under which the equipment operates, is contained within the frequency band designated in the rule section under which the equipment is operated.
Test Method:	Occupied bandwidth—relative measurement procedure
Test Limit:	Intentional radiators operating under the alternative provisions to the general emission limits, as contained in §§ 15.217 through 15.257 and in subpart E of this part, must be designed to ensure that the 20 dB bandwidth of the emission, or whatever bandwidth may otherwise be specified in the specific rule section under which the equipment operates, is contained within the frequency band designated in the rule section under which the equipment is operated.
Procedure:	<p>a) The spectrum analyzer center frequency is set to the nominal EUT channel center frequency. The span range for the EMI receiver or spectrum analyzer shall be between two times and five times the OBW.</p> <p>b) The nominal IF filter bandwidth (3 dB RBW) shall be in the range of 1% to 5% of the OBW and video bandwidth (VBW) shall be approximately three times RBW, unless otherwise specified by the applicable requirement.</p> <p>c) Set the reference level of the instrument as required, keeping the signal from exceeding the maximum input mixer level for linear operation. In general, the peak of the spectral envelope shall be more than $[10 \log (OBW/RBW)]$ below the reference level. Specific guidance is given in 4.1.5.2.</p> <p>d) Steps a) through c) might require iteration to adjust within the specified tolerances.</p> <p>e) The dynamic range of the instrument at the selected RBW shall be more than 10 dB below the target “-xx dB down” requirement; that is, if the requirement calls for measuring the -20 dB OBW, the instrument noise floor at the selected RBW shall be at least 30 dB below the reference value.</p> <p>f) Set detection mode to peak and trace mode to max hold.</p> <p>g) Determine the reference value: Set the EUT to transmit an unmodulated carrier or modulated signal, as applicable. Allow the trace to stabilize. Set the spectrum analyzer marker to the highest level of the displayed trace (this is the reference value).</p> <p>h) Determine the “-xx dB down amplitude” using $[(\text{reference value}) - xx]$. Alternatively, this calculation may be made by using the marker-delta function of the instrument.</p> <p>i) If the reference value is determined by an unmodulated carrier, then turn the EUT modulation ON, and either clear the existing trace or start a new trace on the spectrum analyzer and allow the new trace to stabilize. Otherwise, the trace from step g) shall be used for step j).</p> <p>j) Place two markers, one at the lowest frequency and the other at the highest frequency of the envelope of the spectral display, such that each marker is at or slightly below the “-xx dB down amplitude” determined in step h). If a marker is below this “-xx dB down amplitude” value, then it shall be as close as possible to this value. The occupied bandwidth is the frequency</p>

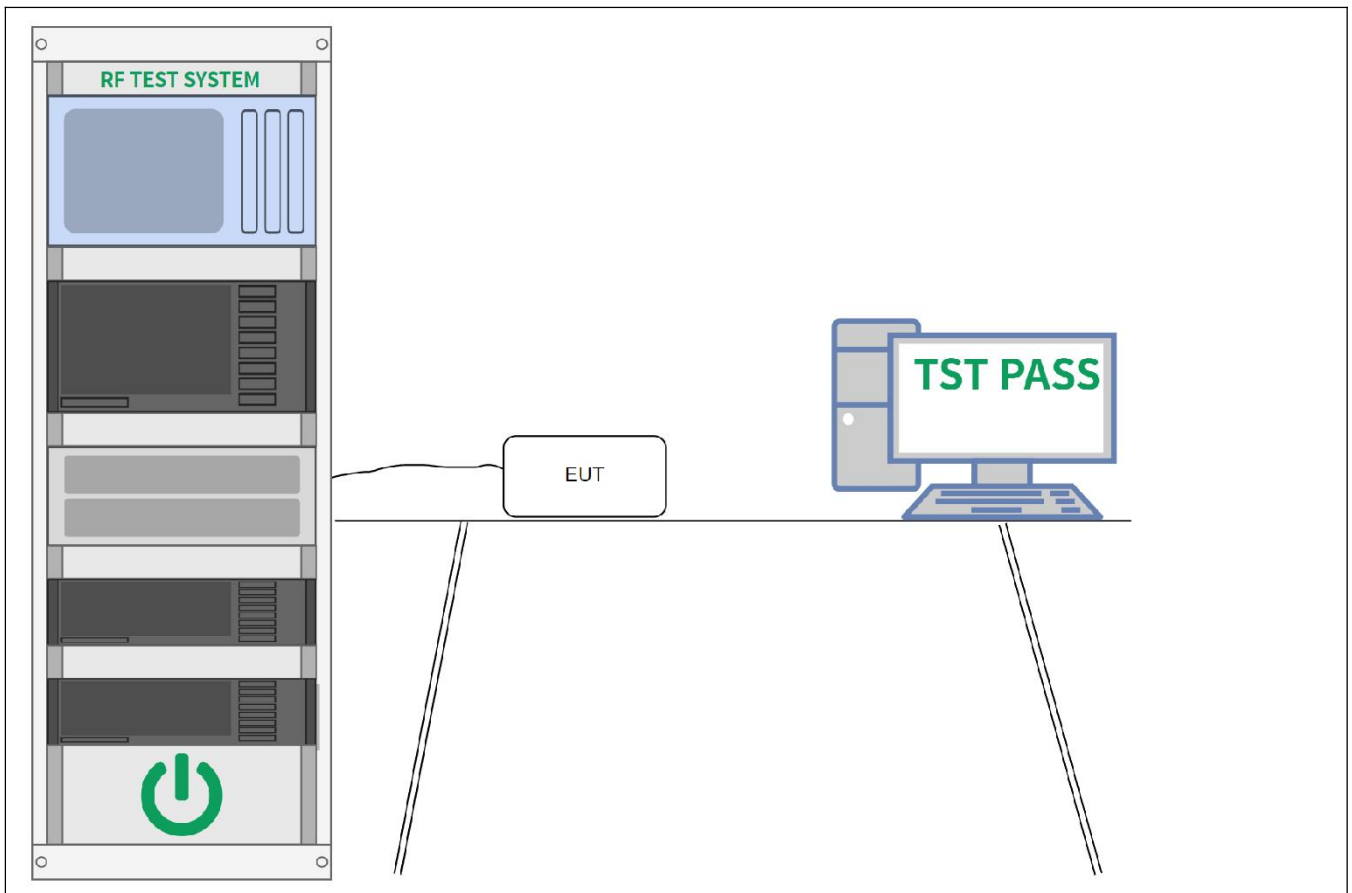
difference between the two markers. Alternatively, set a marker at the lowest frequency of the envelope of the spectral display, such that the marker is at or slightly below the “-xx dB down amplitude” determined in step h). Reset the marker-delta function and move the marker to the other side of the emission until the delta marker amplitude is at the same level as the reference marker amplitude. The marker-delta frequency reading at this point is the specified emission bandwidth.

k) The occupied bandwidth shall be reported by providing plot(s) of the measuring instrument display; the plot axes and the scale units per division shall be clearly labeled. Tabular data may be reported in addition to the plot(s).

7.1.1 E.U.T. Operation:

Operating Environment:	
Temperature:	23.6 °C
Humidity:	54.4 %
Atmospheric Pressure:	1016 mbar
Pre test mode:	TM1, TM2
Final test mode:	TM1, TM2

7.1.2 Test Setup Diagram:



7.1.3 Test Data:

*** Please upload the appendix. (Task Appendix) ***

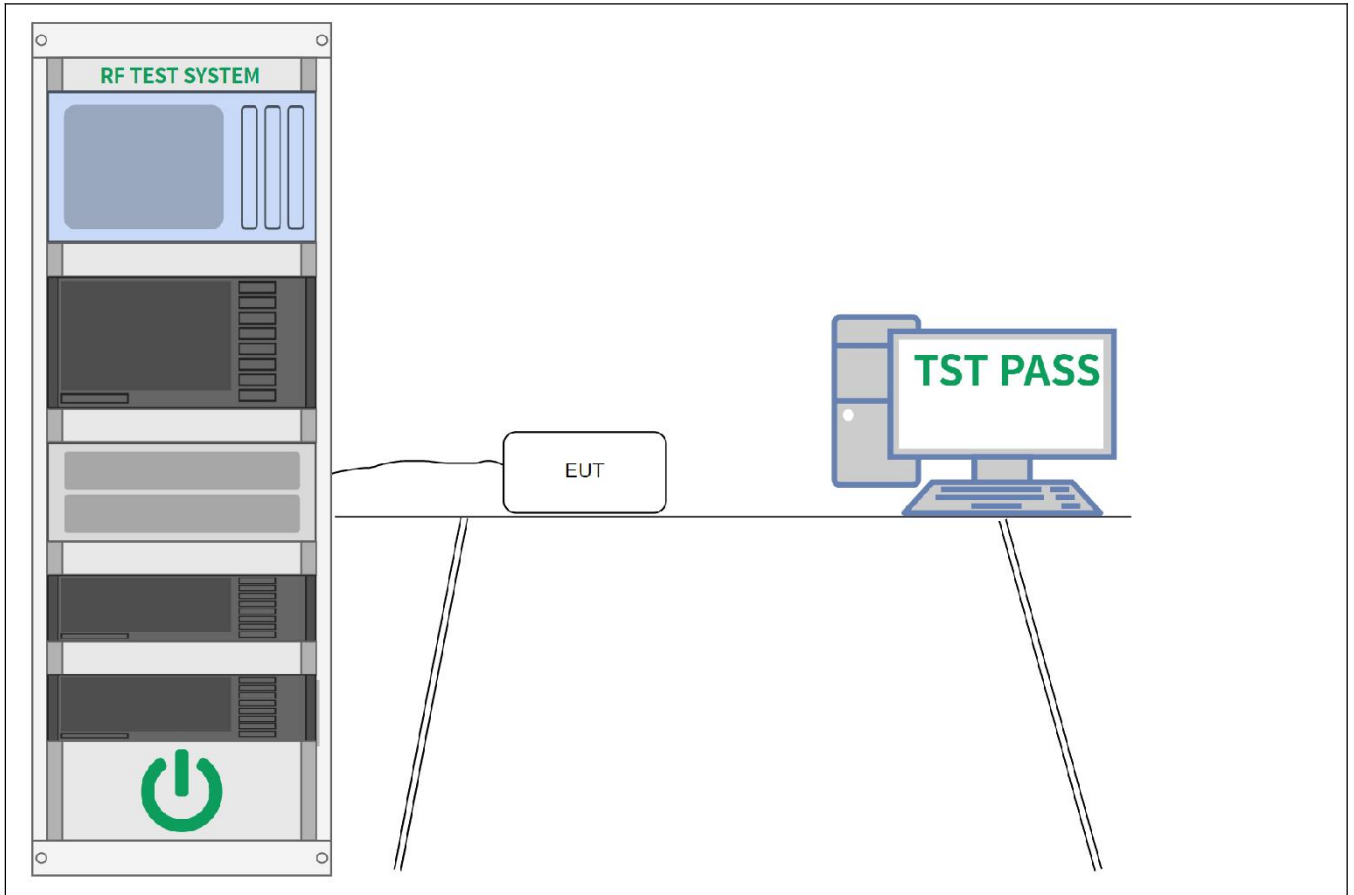
7.2 Maximum Conducted Output Power

Test Requirement:	For frequency hopping systems operating in the 2400-2483.5 MHz band employing at least 75 non-overlapping hopping channels, and all frequency hopping systems in the 5725-5850 MHz band: 1 watt. For all other frequency hopping systems in the 2400-2483.5 MHz band: 0.125 watts.
Test Method:	Output power test procedure for frequency-hopping spread-spectrum (FHSS) devices
Test Limit:	For frequency hopping systems operating in the 2400-2483.5 MHz band employing at least 75 non-overlapping hopping channels, and all frequency hopping systems in the 5725-5850 MHz band: 1 watt. For all other frequency hopping systems in the 2400-2483.5 MHz band: 0.125 watts.
Procedure:	<p>This is an RF-conducted test to evaluate maximum peak output power. Use a direct connection between the antenna port of the unlicensed wireless device and the spectrum analyzer, through suitable attenuation. The hopping shall be disabled for this test:</p> <p>a) Use the following spectrum analyzer settings:</p> <ol style="list-style-type: none"> 1) Span: Approximately five times the 20 dB bandwidth, centered on a hopping channel. 2) RBW > 20 dB bandwidth of the emission being measured. 3) VBW >= RBW. 4) Sweep: Auto. 5) Detector function: Peak. 6) Trace: Max hold. <p>b) Allow trace to stabilize.</p> <p>c) Use the marker-to-peak function to set the marker to the peak of the emission.</p> <p>d) The indicated level is the peak output power, after any corrections for external attenuators and cables.</p> <p>e) A plot of the test results and setup description shall be included in the test report.</p> <p>NOTE—A peak responding power meter may be used, where the power meter and sensor system video bandwidth is greater than the occupied bandwidth of the unlicensed wireless device, rather than a spectrum analyzer.</p>

7.2.1 E.U.T. Operation:

Operating Environment:	
Temperature:	23.6 °C
Humidity:	54.4 %
Atmospheric Pressure:	1016 mbar
Pre test mode:	TM1, TM2
Final test mode:	TM1, TM2

7.2.2 Test Setup Diagram:



7.2.3 Test Data:

Please Refer to Appendix for Details.

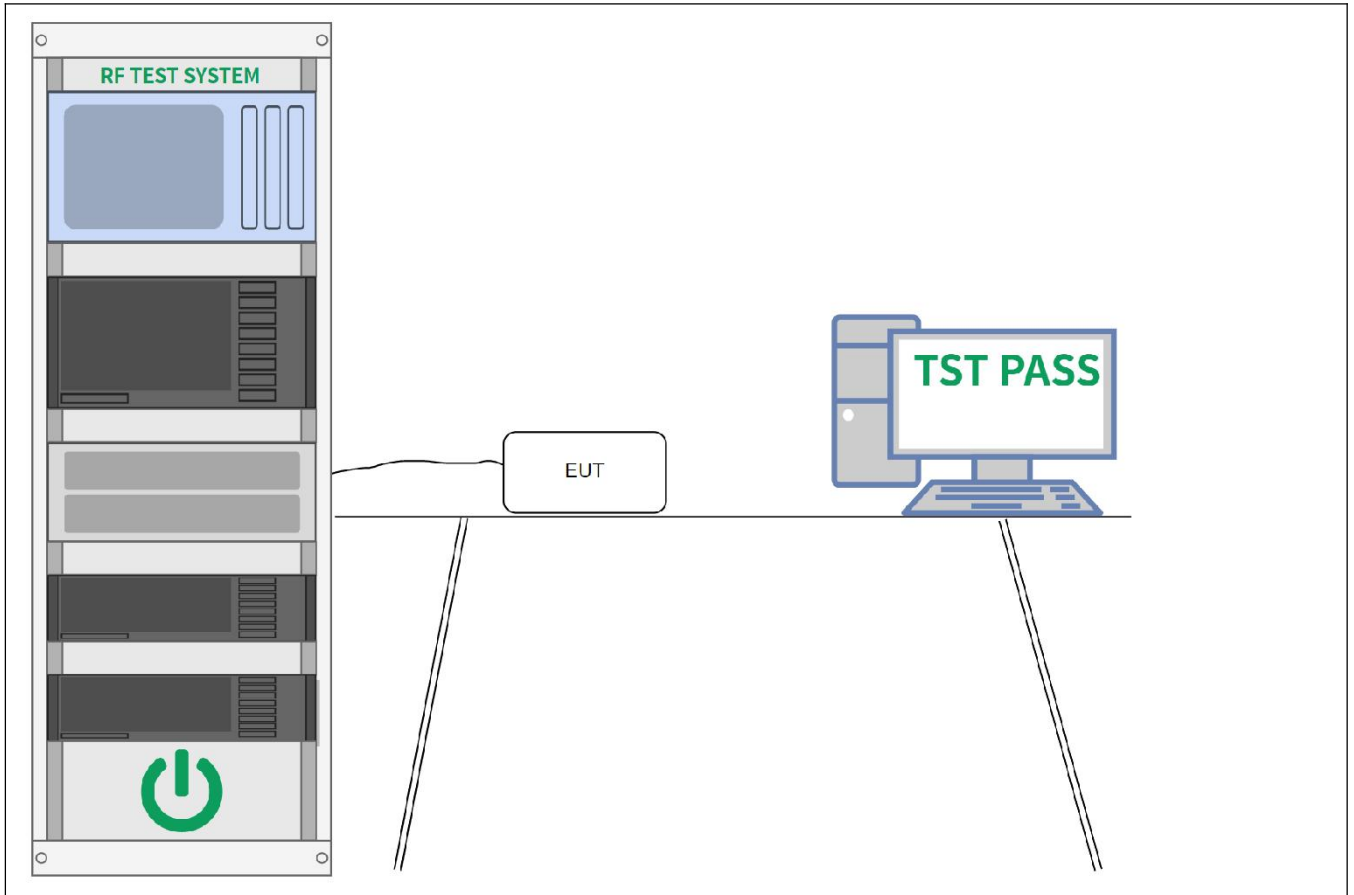
7.3 Channel Separation

Test Requirement:	Frequency hopping systems shall have hopping channel carrier frequencies separated by a minimum of 25 kHz or the 20 dB bandwidth of the hopping channel, whichever is greater. Alternatively, frequency hopping systems operating in the 2400-2483.5 MHz band may have hopping channel carrier frequencies that are separated by 25 kHz or two-thirds of the 20 dB bandwidth of the hopping channel, whichever is greater, provided the systems operate with an output power no greater than 125 mW.
Test Method:	Carrier frequency separation
Test Limit:	Frequency hopping systems shall have hopping channel carrier frequencies separated by a minimum of 25 kHz or the 20 dB bandwidth of the hopping channel, whichever is greater. Alternatively, frequency hopping systems operating in the 2400-2483.5 MHz band may have hopping channel carrier frequencies that are separated by 25 kHz or two-thirds of the 20 dB bandwidth of the hopping channel, whichever is greater, provided the systems operate with an output power no greater than 125 mW.
Procedure:	<p>The EUT shall have its hopping function enabled. Use the following spectrum analyzer settings:</p> <ul style="list-style-type: none"> a) Span: Wide enough to capture the peaks of two adjacent channels. b) RBW: Start with the RBW set to approximately 30% of the channel spacing; adjust as necessary to best identify the center of each individual channel. c) Video (or average) bandwidth (VBW) \geq RBW. d) Sweep: Auto. e) Detector function: Peak. f) Trace: Max hold. g) Allow the trace to stabilize. <p>Use the marker-delta function to determine the separation between the peaks of the adjacent channels. Compliance of an EUT with the appropriate regulatory limit shall be determined. A plot of the data shall be included in the test report.</p>

7.3.1 E.U.T. Operation:

Operating Environment:	
Temperature:	23.6 °C
Humidity:	54.4 %
Atmospheric Pressure:	1016 mbar
Pre test mode:	TM3, TM4
Final test mode:	TM3, TM4

7.3.2 Test Setup Diagram:



7.3.3 Test Data:

Please Refer to Appendix for Details.

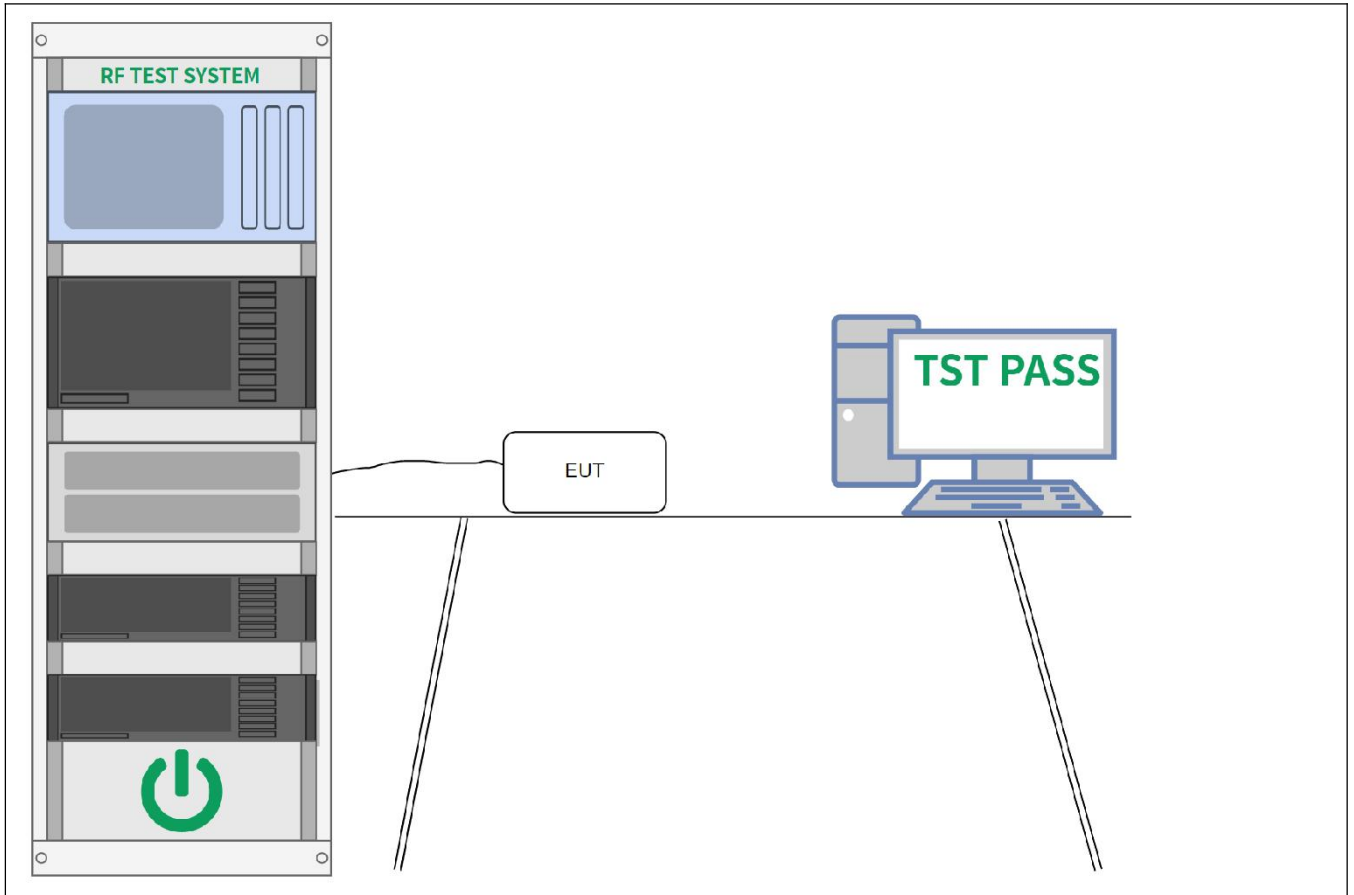
7.4 Number of Hopping Frequencies

Test Requirement:	Frequency hopping systems in the 2400-2483.5 MHz band shall use at least 15 channels. The average time of occupancy on any channel shall not be greater than 0.4 seconds within a period of 0.4 seconds multiplied by the number of hopping channels employed. Frequency hopping systems may avoid or suppress transmissions on a particular hopping frequency provided that a minimum of 15 channels are used.
Test Method:	Number of hopping frequencies
Test Limit:	Frequency hopping systems in the 2400-2483.5 MHz band shall use at least 15 channels. The average time of occupancy on any channel shall not be greater than 0.4 seconds within a period of 0.4 seconds multiplied by the number of hopping channels employed. Frequency hopping systems may avoid or suppress transmissions on a particular hopping frequency provided that a minimum of 15 channels are used.
Procedure:	<p>The EUT shall have its hopping function enabled. Use the following spectrum analyzer settings:</p> <ul style="list-style-type: none"> a) Span: The frequency band of operation. Depending on the number of channels the device supports, it may be necessary to divide the frequency range of operation across multiple spans, to allow the individual channels to be clearly seen. b) RBW: To identify clearly the individual channels, set the RBW to less than 30% of the channel spacing or the 20 dB bandwidth, whichever is smaller. c) VBW \geq RBW. d) Sweep: Auto. e) Detector function: Peak. f) Trace: Max hold. g) Allow the trace to stabilize. <p>It might prove necessary to break the span up into subranges to show clearly all of the hopping frequencies. Compliance of an EUT with the appropriate regulatory limit shall be determined for the number of hopping channels. A plot of the data shall be included in the test report.</p>

7.4.1 E.U.T. Operation:

Operating Environment:	
Temperature:	23.6 °C
Humidity:	54.4 %
Atmospheric Pressure:	1016 mbar
Pre test mode:	TM3, TM4
Final test mode:	TM3, TM4

7.4.2 Test Setup Diagram:



7.4.3 Test Data:

Please Refer to Appendix for Details.

7.5 Dwell Time

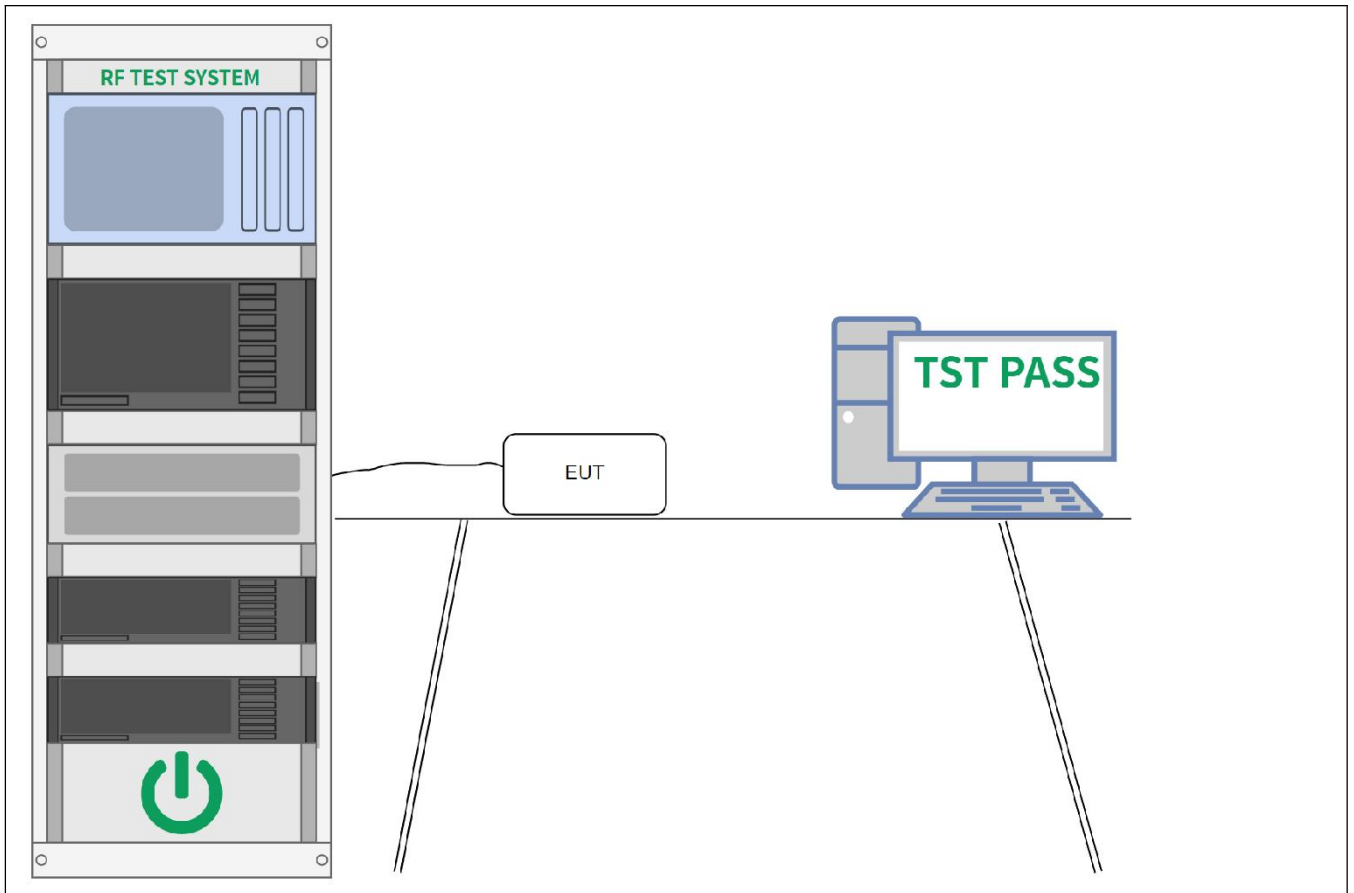
Test Requirement:	Frequency hopping systems in the 2400-2483.5 MHz band shall use at least 15 channels. The average time of occupancy on any channel shall not be greater than 0.4 seconds within a period of 0.4 seconds multiplied by the number of hopping channels employed. Frequency hopping systems may avoid or suppress transmissions on a particular hopping frequency provided that a minimum of 15 channels are used.
Test Method:	Time of occupancy (dwell time)
Test Limit:	Frequency hopping systems in the 2400-2483.5 MHz band shall use at least 15 channels. The average time of occupancy on any channel shall not be greater than 0.4 seconds within a period of 0.4 seconds multiplied by the number of hopping channels employed. Frequency hopping systems may avoid or suppress transmissions on a particular hopping frequency provided that a minimum of 15 channels are used.
Procedure:	<p>The EUT shall have its hopping function enabled. Use the following spectrum analyzer settings:</p> <ul style="list-style-type: none"> a) Span: Zero span, centered on a hopping channel. b) RBW shall be \leq channel spacing and where possible RBW should be set $\gg 1 / T$, where T is the expected dwell time per channel. c) Sweep: As necessary to capture the entire dwell time per hopping channel; where possible use a video trigger and trigger delay so that the transmitted signal starts a little to the right of the start of the plot. The trigger level might need slight adjustment to prevent triggering when the system hops on an adjacent channel; a second plot might be needed with a longer sweep time to show two successive hops on a channel. d) Detector function: Peak. e) Trace: Max hold. <p>Use the marker-delta function to determine the transmit time per hop. If this value varies with different modes of operation (data rate, modulation format, number of hopping channels, etc.), then repeat this test for each variation in transmit time.</p> <p>Repeat the measurement using a longer sweep time to determine the number of hops over the period specified in the requirements. The sweep time shall be equal to, or less than, the period specified in the requirements. Determine the number of hops over the sweep time and calculate the total number of hops in the period specified in the requirements, using the following equation:</p> $(\text{Number of hops in the period specified in the requirements}) = (\text{number of hops on spectrum analyzer}) \times (\text{period specified in the requirements} / \text{analyzer sweep time})$ <p>The average time of occupancy is calculated from the transmit time per hop multiplied by the number of hops in the period specified in the requirements. If the number of hops in a specific time varies with different modes of operation (data rate, modulation format, number of hopping channels, etc.), then repeat this test for each variation.</p> <p>The measured transmit time and time between hops shall be consistent with the values described in the operational description for the EUT.</p>

7.5.1 E.U.T. Operation:

Operating Environment:

Temperature:	23.6 °C
Humidity:	54.4 %
Atmospheric Pressure:	1016 mbar
Pre test mode:	TM3, TM4
Final test mode:	TM3, TM4

7.5.2 Test Setup Diagram:



7.5.3 Test Data:

Please Refer to Appendix for Details.

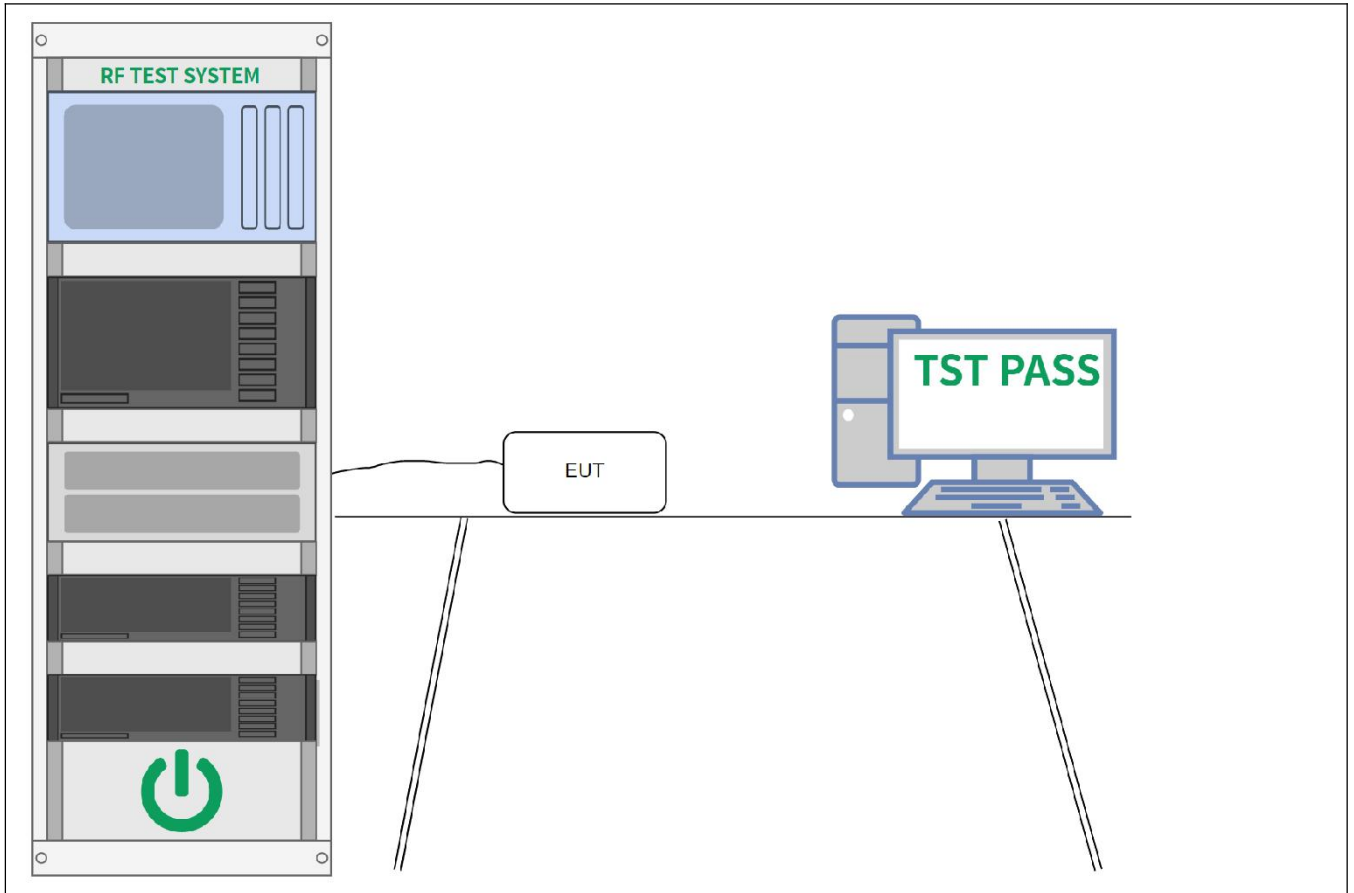
7.6 Emissions in non-restricted frequency bands

Test Requirement:	In any 100 kHz bandwidth outside the frequency band in which the spread spectrum or digitally modulated intentional radiator is operating, the radio frequency power that is produced by the intentional radiator shall be at least 20 dB below that in the 100 kHz bandwidth within the band that contains the highest level of the desired power, based on either an RF conducted or a radiated measurement, provided the transmitter demonstrates compliance with the peak conducted power limits. If the transmitter complies with the conducted power limits based on the use of RMS averaging over a time interval, as permitted under paragraph (b)(3) of this section, the attenuation required under this paragraph shall be 30 dB instead of 20 dB. Attenuation below the general limits specified in § 15.209(a) is not required.
Test Method:	Conducted spurious emissions test methodology
Test Limit:	In any 100 kHz bandwidth outside the frequency band in which the spread spectrum or digitally modulated intentional radiator is operating, the radio frequency power that is produced by the intentional radiator shall be at least 20 dB below that in the 100 kHz bandwidth within the band that contains the highest level of the desired power, based on either an RF conducted or a radiated measurement, provided the transmitter demonstrates compliance with the peak conducted power limits. If the transmitter complies with the conducted power limits based on the use of RMS averaging over a time interval, as permitted under paragraph (b)(3) of this section, the attenuation required under this paragraph shall be 30 dB instead of 20 dB. Attenuation below the general limits specified in § 15.209(a) is not required.
Procedure:	Conducted spurious emissions shall be measured for the transmit frequency, per 5.5 and 5.6, and at the maximum transmit powers. Connect the primary antenna port through an attenuator to the spectrum analyzer input; in the results, account for all losses between the unlicensed wireless device output and the spectrum analyzer. The instrument shall span 30 MHz to 10 times the operating frequency in GHz, with a resolution bandwidth of 100 kHz, video bandwidth of 300 kHz, and a coupled sweep time with a peak detector. The band 30 MHz to the highest frequency may be split into smaller spans, as long as the entire spectrum is covered.

7.6.1 E.U.T. Operation:

Operating Environment:	
Temperature:	23.6 °C
Humidity:	54.4 %
Atmospheric Pressure:	1016 mbar
Pre test mode:	TM1, TM2, TM3, TM4
Final test mode:	TM1, TM2, TM3, TM4

7.6.2 Test Setup Diagram:



7.6.3 Test Data:

Please Refer to Appendix for Details.

7.7 Emissions around the fundamental

Test Requirement:	In addition, radiated emissions which fall in the restricted bands, as defined in § 15.205(a), must also comply with the radiated emission limits specified in § 15.209(a)(see § 15.205(c)).`		
Test Method:	Radiated emissions tests		
Test Limit:	Frequency (MHz)	Field strength (microvolts/meter)	Measurement distance (meters)
	0.009-0.490	2400/F(kHz)	300
	0.490-1.705	24000/F(kHz)	30
	1.705-30.0	30	30
	30-88	100 **	3
	88-216	150 **	3
	216-960	200 **	3
	Above 960	500	3
	** Except as provided in paragraph (g), fundamental emissions from intentional radiators operating under this section shall not be located in the frequency bands 54-72 MHz, 76-88 MHz, 174-216 MHz or 470-806 MHz. However, operation within these frequency bands is permitted under other sections of this part, e.g., §§ 15.231 and 15.241.		
Procedure:	ANSI C63.10-2013 section 6.6.4		

7.7.1 E.U.T. Operation:

Operating Environment:	
Temperature:	25.3 °C
Humidity:	50.1 %
Atmospheric Pressure:	1014 mbar
Pre test mode:	TM1, TM2
Final test mode:	TM1, TM2

7.7.2 Test Data:

Scan from 9kHz to 25GHz, the disturbance above 10GHz and below 30MHz was very low. As shown in 7.9 section, for frequencies above 1GHz, the field strength limits are based on average limits. However, the peak field strength of any emission shall not exceed the maximum permitted average limits specified above by more than 20 dB under any condition of modulation. So, only the peak measurements were shown in the report.

7.8 Emissions in restricted frequency bands (below 1GHz)

Test Requirement:	In addition, radiated emissions which fall in the restricted bands, as defined in § 15.205(a), must also comply with the radiated emission limits specified in § 15.209(a)(see § 15.205(c)).`		
Test Method:	Radiated emissions tests		
Test Limit:	Frequency (MHz)	Field strength (microvolts/meter)	Measurement distance (meters)
	0.009-0.490	2400/F(kHz)	300
	0.490-1.705	24000/F(kHz)	30
	1.705-30.0	30	30
	30-88	100 **	3
	88-216	150 **	3
	216-960	200 **	3
	Above 960	500	3
<p>** Except as provided in paragraph (g), fundamental emissions from intentional radiators operating under this section shall not be located in the frequency bands 54-72 MHz, 76-88 MHz, 174-216 MHz or 470-806 MHz. However, operation within these frequency bands is permitted under other sections of this part, e.g.,</p> <p>§§ 15.231 and 15.241.</p>			
Procedure:	ANSI C63.10-2013 section 6.6.4		

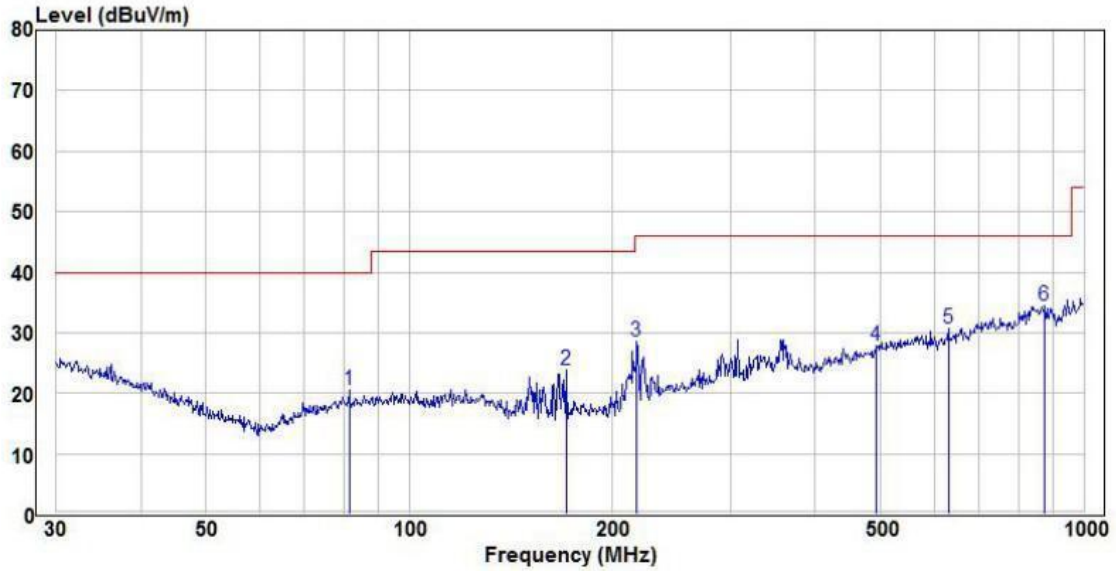
7.8.1 E.U.T. Operation:

Operating Environment:	
Temperature:	25.2 °C
Humidity:	46.2 %
Atmospheric Pressure:	1011 mbar
Pre test mode:	TM1
Final test mode:	TM1

7.8.2 Test Data:

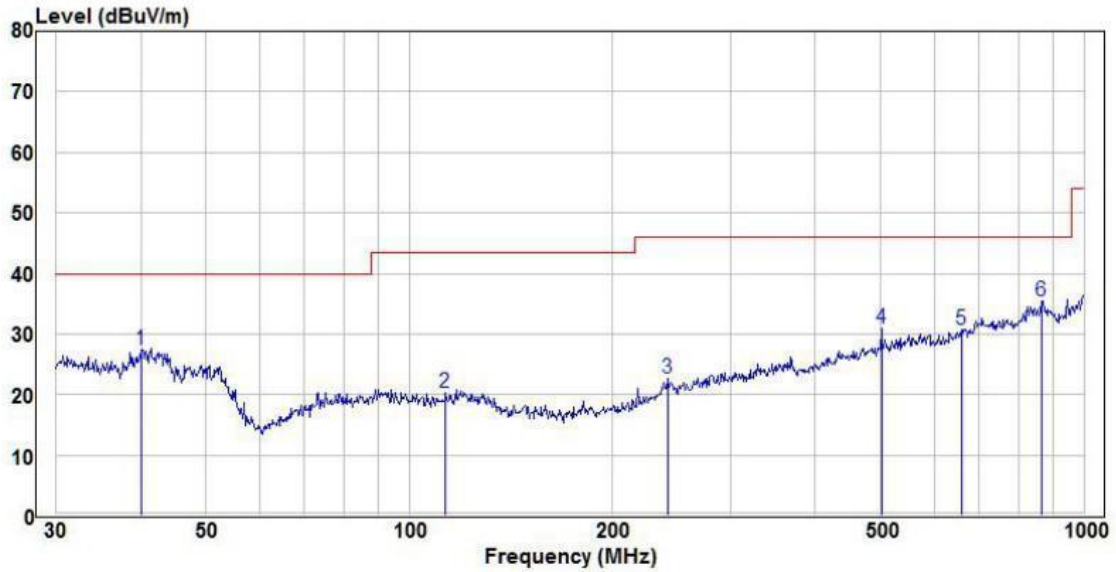
Please Refer to Appendix for Details.

TM1 / Polarization: Horizontal / Band: 2.4G / BW: 1 / CH: M



Freq.	Read Level	Factor	Level	Limit Line	Over Limit	Remark	Pol/Phase	APos	TPos
dBuV	dBuV	dBuV	dBuV	dBuV	dBuV				
1	81.50	10.72	9.43	20.54	40.00	-19.46 Peak	HORIZONTAL	---	---
2	170.79	16.19	7.06	23.87	43.50	-19.63 Peak	HORIZONTAL	---	---
3	217.54	19.54	8.34	28.58	46.00	-17.42 Peak	HORIZONTAL	---	---
4	492.47	9.77	15.88	27.81	46.00	-18.19 Peak	HORIZONTAL	---	---
5	629.48	11.39	17.50	30.71	46.00	-15.29 Peak	HORIZONTAL	---	---
6	875.25	10.60	18.85	34.55	46.00	-11.45 Peak	HORIZONTAL	---	---

TM1 / Polarization: Vertical / Band: 2.4G / BW: 1 / CH: M



Freq.	Read Level	Factor	Level	Limit Line	Over Limit	Remark	Pol/Phase	APos	TPos
dBuV	dBuV	dBuV	dBuV	dBuV	dBuV				
1	39.99	14.51	14.50	27.31	40.00	-12.69 Peak	VERTICAL	---	---
2	113.32	9.85	9.87	20.20	43.50	-23.30 Peak	VERTICAL	---	---
3	241.68	11.04	9.09	22.72	46.00	-23.28 Peak	VERTICAL	---	---
4	501.18	12.75	16.11	31.04	46.00	-14.96 Peak	VERTICAL	---	---
5	658.84	10.83	18.00	30.67	46.00	-15.33 Peak	VERTICAL	---	---
6	866.09	11.43	18.90	35.41	46.00	-10.59 Peak	VERTICAL	---	---

7.9 Emissions in restricted frequency bands (above 1GHz)

Test Requirement:	In addition, radiated emissions which fall in the restricted bands, as defined in § 15.205(a), must also comply with the radiated emission limits specified in § 15.209(a)(see § 15.205(c)).`		
Test Method:	Radiated emissions tests		
Test Limit:	Frequency (MHz)	Field strength (microvolts/meter)	Measurement distance (meters)
	0.009-0.490	2400/F(kHz)	300
	0.490-1.705	24000/F(kHz)	30
	1.705-30.0	30	30
	30-88	100 **	3
	88-216	150 **	3
	216-960	200 **	3
	Above 960	500	3
<p>** Except as provided in paragraph (g), fundamental emissions from intentional radiators operating under this section shall not be located in the frequency bands 54-72 MHz, 76-88 MHz, 174-216 MHz or 470-806 MHz. However, operation within these frequency bands is permitted under other sections of this part, e.g.,</p> <p>§§ 15.231 and 15.241.</p>			
Procedure:	ANSI C63.10-2013 section 6.6.4		

7.9.1 E.U.T. Operation:

Operating Environment:	
Temperature:	22.8 °C
Humidity:	46.3 %
Atmospheric Pressure:	1014 mbar
Pre test mode:	TM1, TM2
Final test mode:	TM1, TM2

7.9.2 Test Data:

Worse case mode:		GFSK(DH5)		Test channel:		Lowest	
Frequency	Meter Reading	Factor	Emission Level	Limits	Over	Detector Type	Ant. Pol.
(MHz)	(dB μ V)	(dB)	(dB μ V/m)	(dB μ V/m)	(dB)		H/V
2390	53.86	-9.2	44.66	74	-29.34	Peak	H
2400	55.04	-9.39	45.65	74	-28.35	Peak	H
4804	51.49	-4.33	47.16	74	-26.84	Peak	H
7206	50.13	1.01	51.14	74	-22.86	Peak	H
2390	53.39	-9.2	44.19	74	-29.81	Peak	V
2400	55.83	-9.39	46.44	74	-27.56	Peak	V
4804	54.07	-4.33	49.74	74	-24.26	Peak	V
7206	49.82	1.01	50.83	74	-23.17	Peak	V

Worse case mode:		GFSK(DH5)		Test channel:		Middle	
Frequency	Meter Reading	Factor	Emission Level	Limits	Over	Detector Type	Ant. Pol.
(MHz)	(dB μ V)	(dB)	(dB μ V/m)	(dB μ V/m)	(dB)		H/V
4882	50.81	-4.11	46.70	74	-27.30	peak	H
7323	50.25	1.51	51.76	74	-22.24	peak	H
4882	52.53	-4.11	48.42	74	-25.58	peak	V
7323	48.89	1.51	50.40	74	-23.60	peak	V

Worse case mode:		GFSK(DH5)		Test channel:		Highest	
Frequency	Meter Reading	Factor	Emission Level	Limits	Over	Detector Type	Ant. Pol.
(MHz)	(dB μ V)	(dB)	(dB μ V/m)	(dB μ V/m)	(dB)		H/V
2483.5	55.22	-9.29	45.93	74	-28.07	Peak	H
4960	50.28	-4.04	46.24	74	-27.76	Peak	H
7440	49.60	1.57	51.17	74	-22.83	Peak	H
2483.5	53.52	-9.29	44.23	74	-29.77	Peak	V
4960	49.77	-4.04	45.73	74	-28.27	Peak	V
7440	48.95	1.57	50.52	74	-23.48	Peak	V

Worse case mode:		$\pi/4$ DQPSK (2DH5)		Test channel:		Lowest	
Frequency	Meter Reading	Factor	Emission Level	Limits	Over	Detector Type	Ant. Pol.
(MHz)	(dB μ V)	(dB)	(dB μ V/m)	(dB μ V/m)	(dB)		H/V
2390	54.17	-9.2	44.97	74	-29.03	Peak	H
2400	56.08	-9.39	46.69	74	-27.31	Peak	H
4804	53.41	-4.33	49.08	74	-24.92	Peak	H
7206	49.83	1.01	50.84	74	-23.16	Peak	H
2390	53.84	-9.2	44.64	74	-29.36	Peak	V
2400	56.25	-9.39	46.86	74	-27.14	Peak	V
4804	53.36	-4.33	49.03	74	-24.97	Peak	V
7206	50.92	1.01	51.93	74	-22.07	Peak	V

Worse case mode:		$\pi/4$ DQPSK (2DH5)		Test channel:		Middle	
Frequency	Meter Reading	Factor	Emission Level	Limits	Over	Detector Type	Ant. Pol.
(MHz)	(dB μ V)	(dB)	(dB μ V/m)	(dB μ V/m)	(dB)		H/V
4882	52.52	-4.11	48.41	74	-25.59	peak	H
7323	49.53	1.51	51.04	74	-22.96	peak	H
4882	53.78	-4.11	49.67	74	-24.33	peak	V
7323	51.22	1.51	52.73	74	-21.27	peak	V

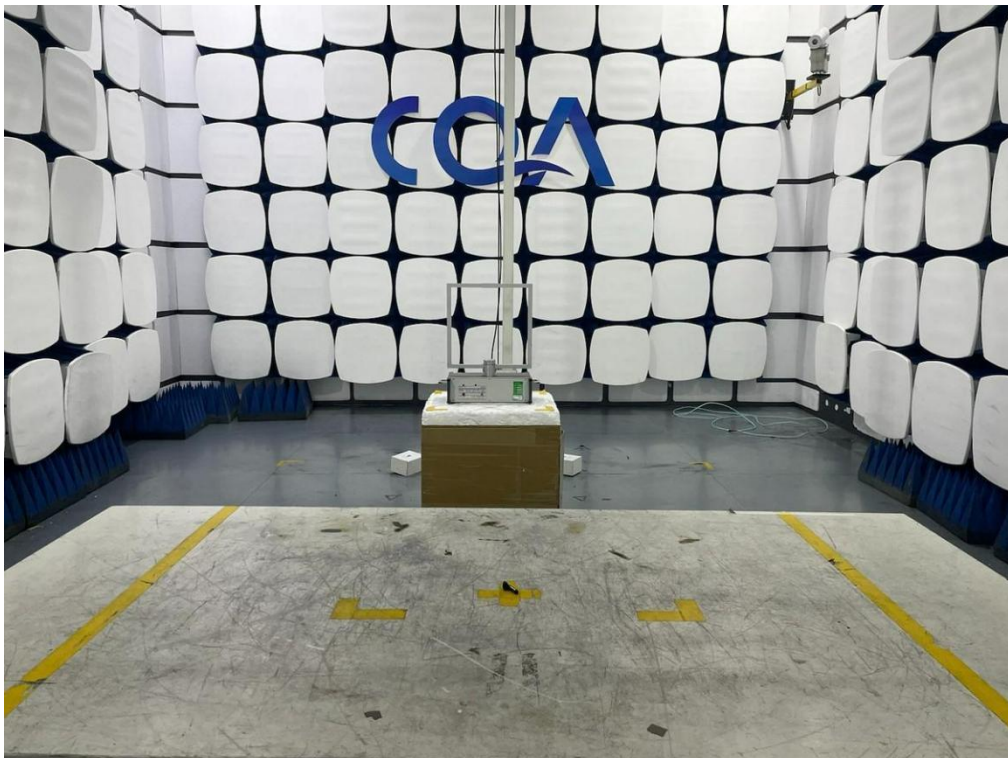
Worse case mode:		$\pi/4$ DQPSK (2DH5)		Test channel:		Highest	
Frequency	Meter Reading	Factor	Emission Level	Limits	Over	Detector Type	Ant. Pol.
(MHz)	(dB μ V)	(dB)	(dB μ V/m)	(dB μ V/m)	(dB)		H/V
2483.5	55.15	-9.29	45.86	74	-28.14	Peak	H
4960	50.75	-4.04	46.71	74	-27.29	Peak	H
7440	50.98	1.57	52.55	74	-21.45	Peak	H
2483.5	54.53	-9.29	45.24	74	-28.76	Peak	V
4960	48.73	-4.04	44.69	74	-29.31	Peak	V
7440	50.34	1.57	51.91	74	-22.09	Peak	V

8 Test Setup Photos

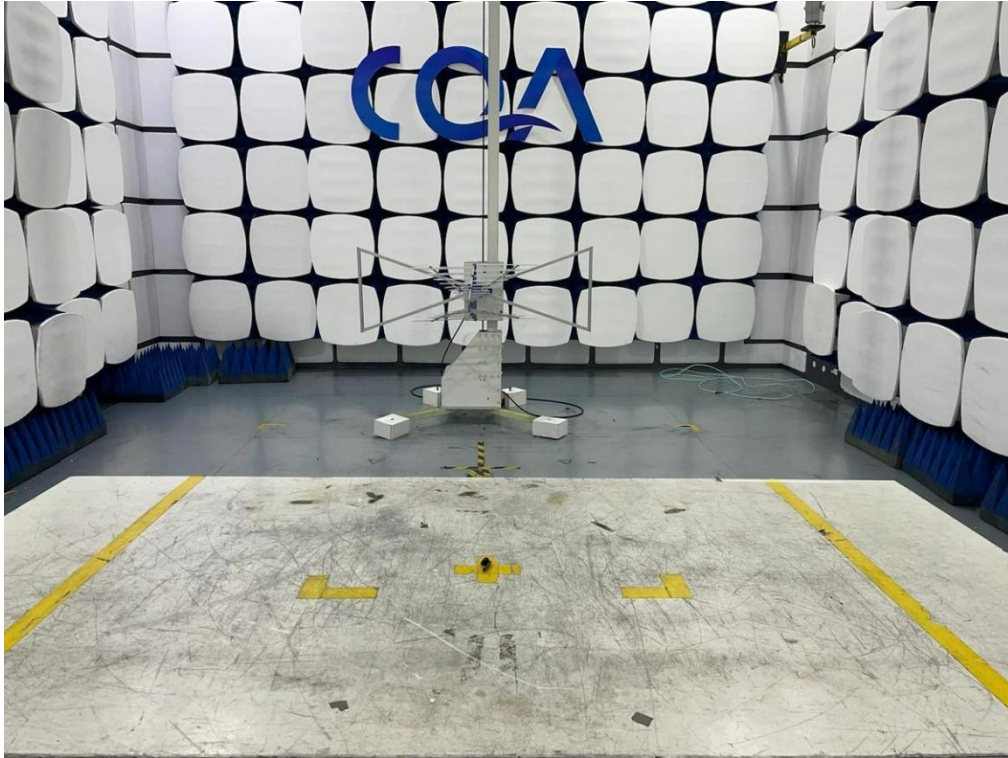
Conducted Emission at AC power line



Emissions around the fundamental
Left ear



Emissions in restricted frequency bands (below 1GHz)
Left ear



Emissions in restricted frequency bands (above 1GHz)
Left ear



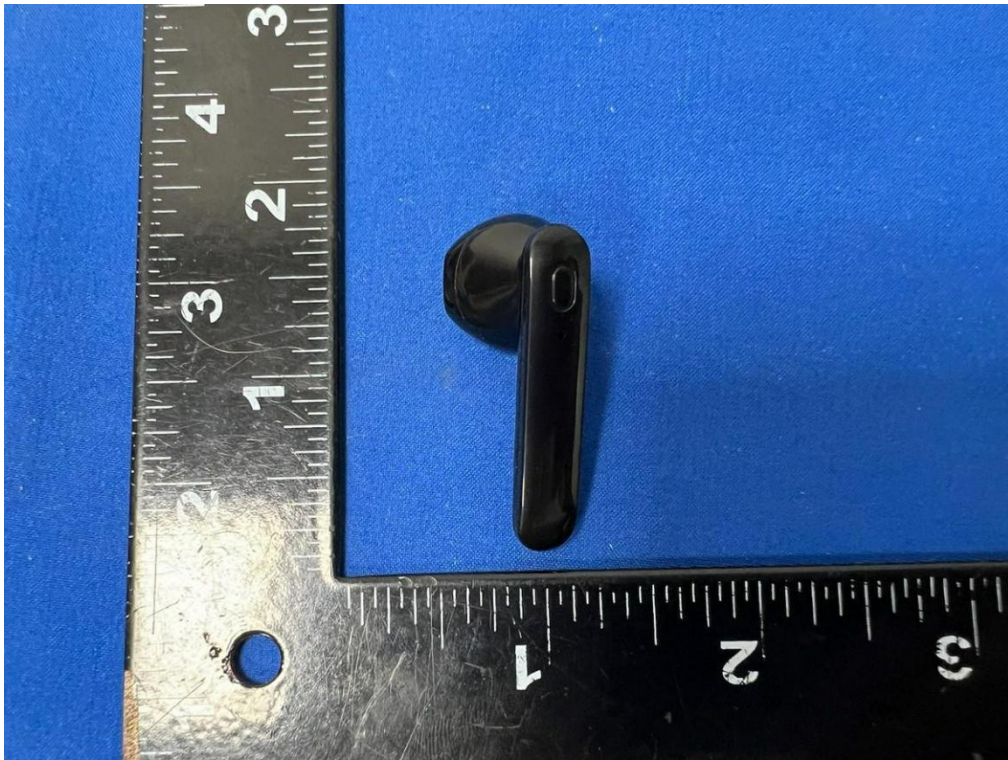
9 Photographs of EUT

External



Main test EUT

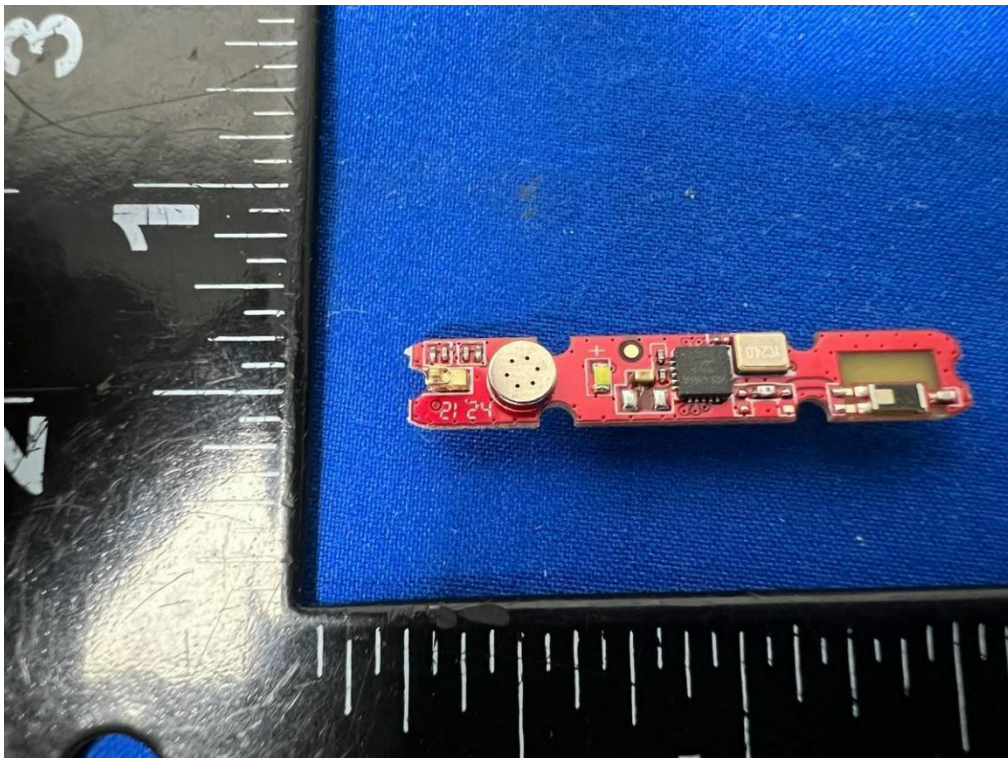


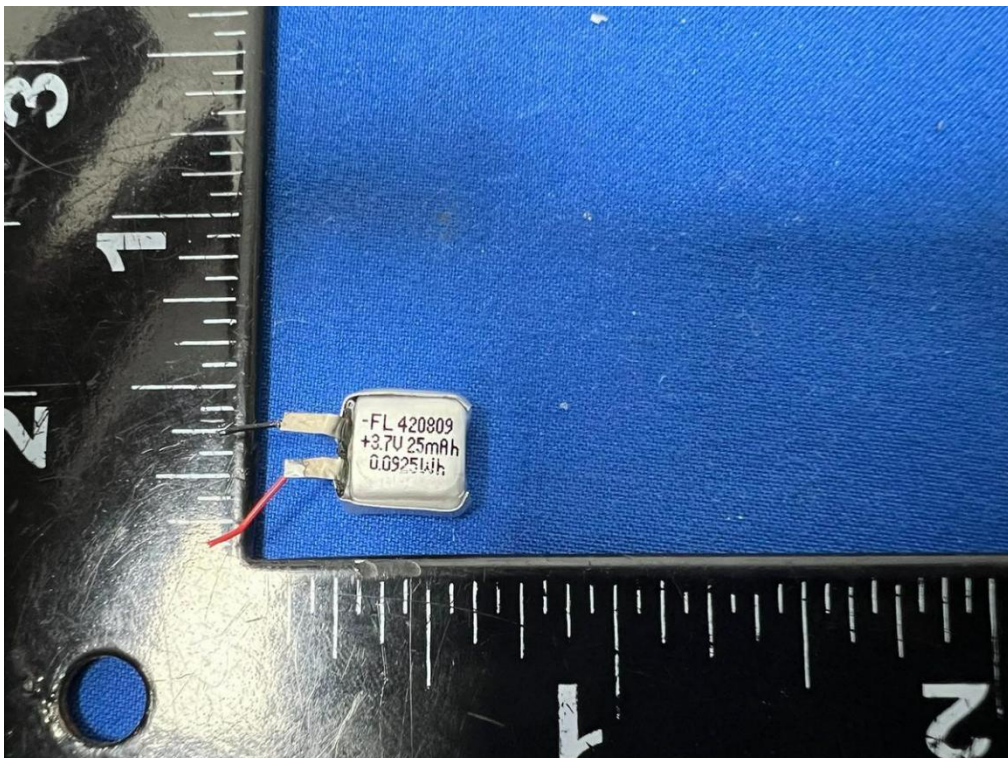
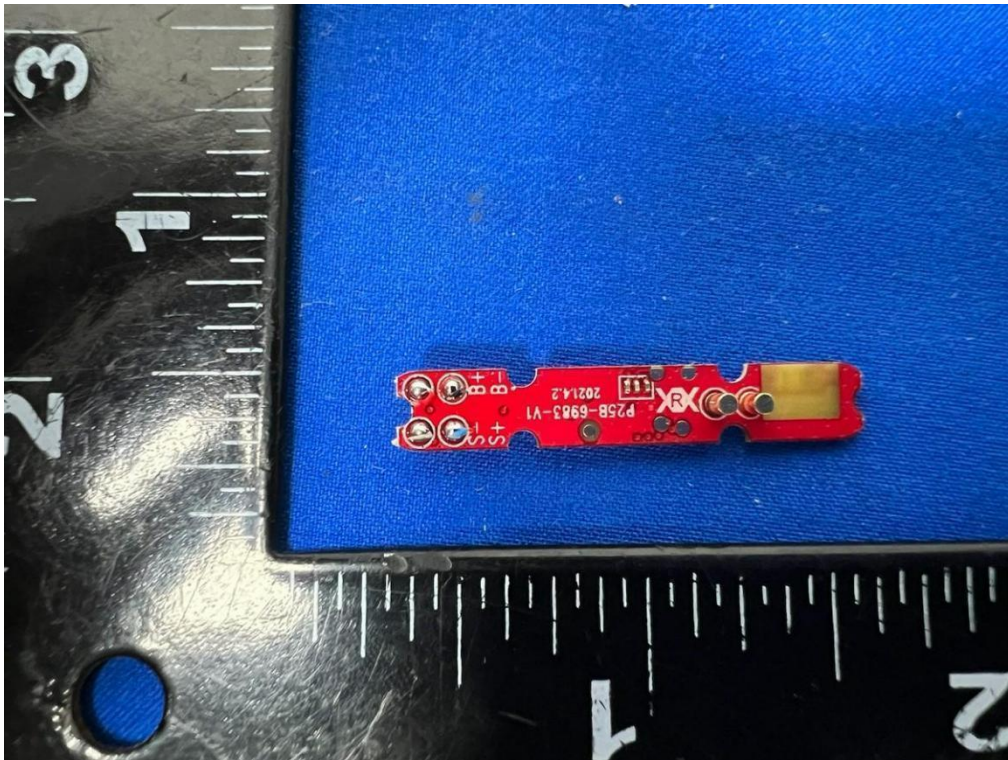


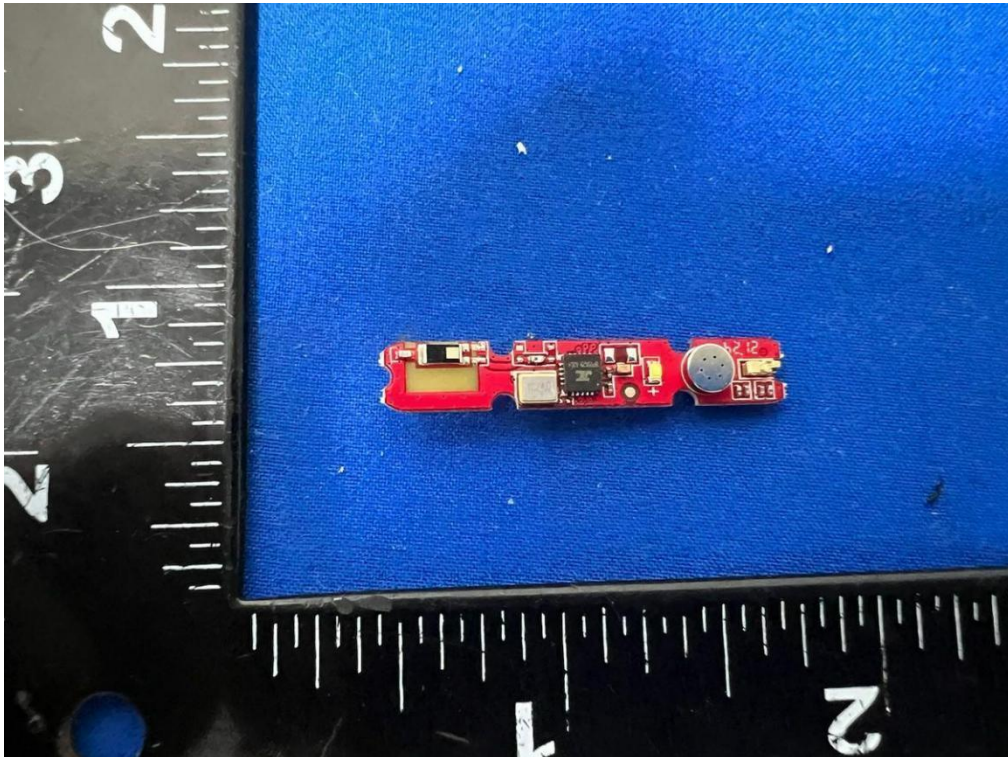
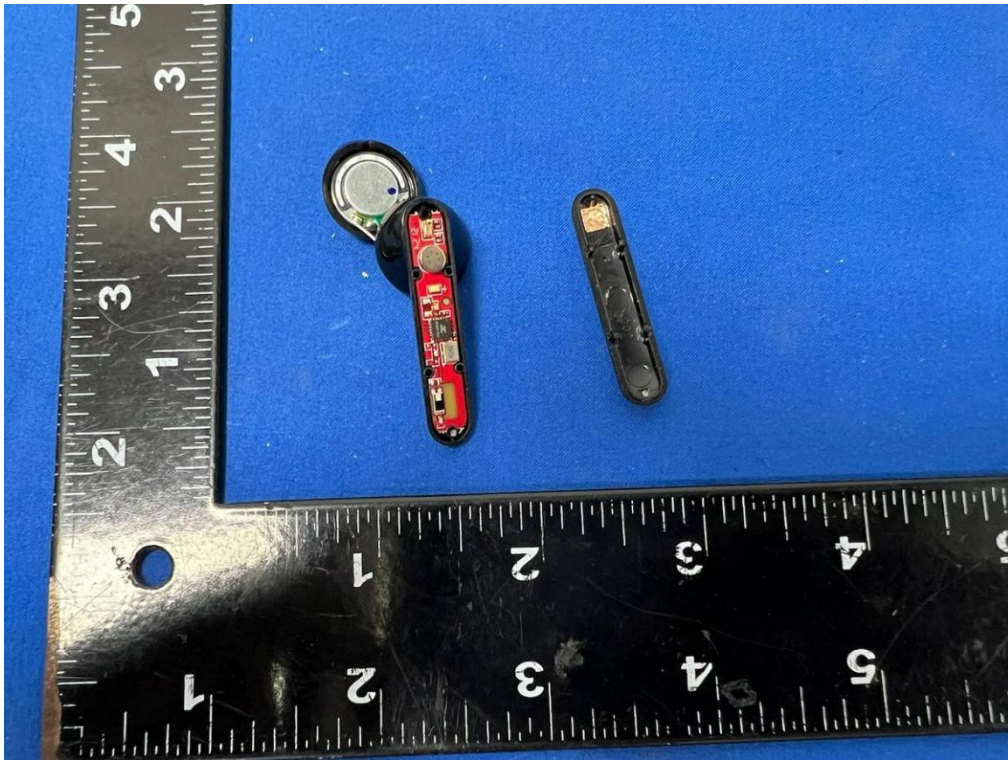


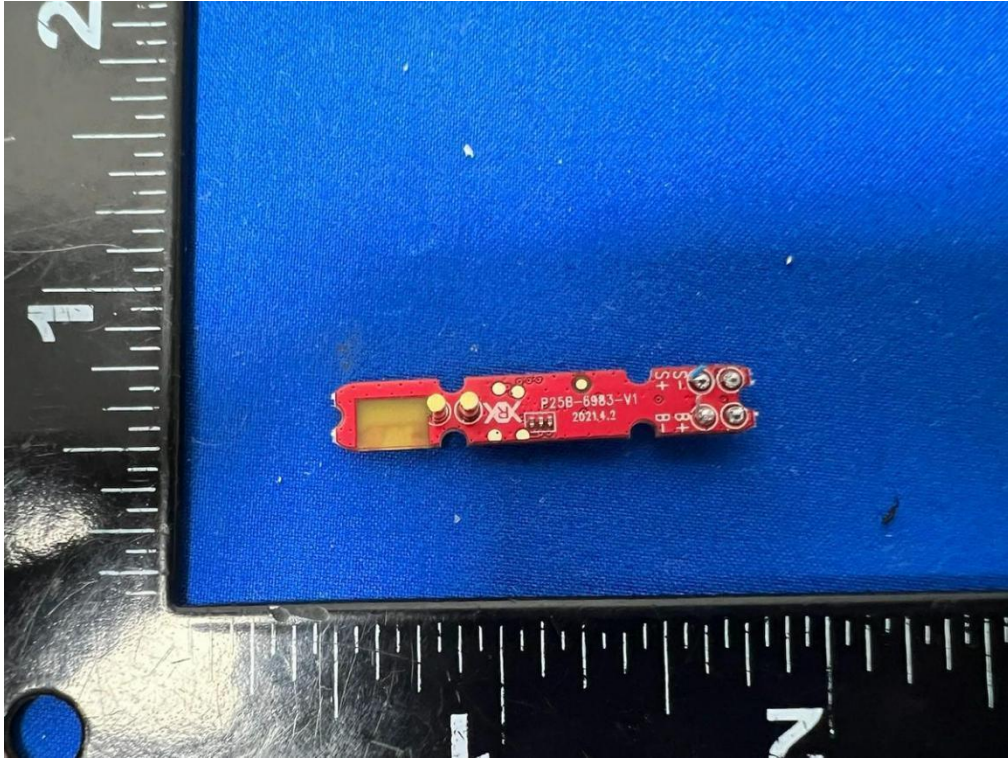
Internal

Main test EUT









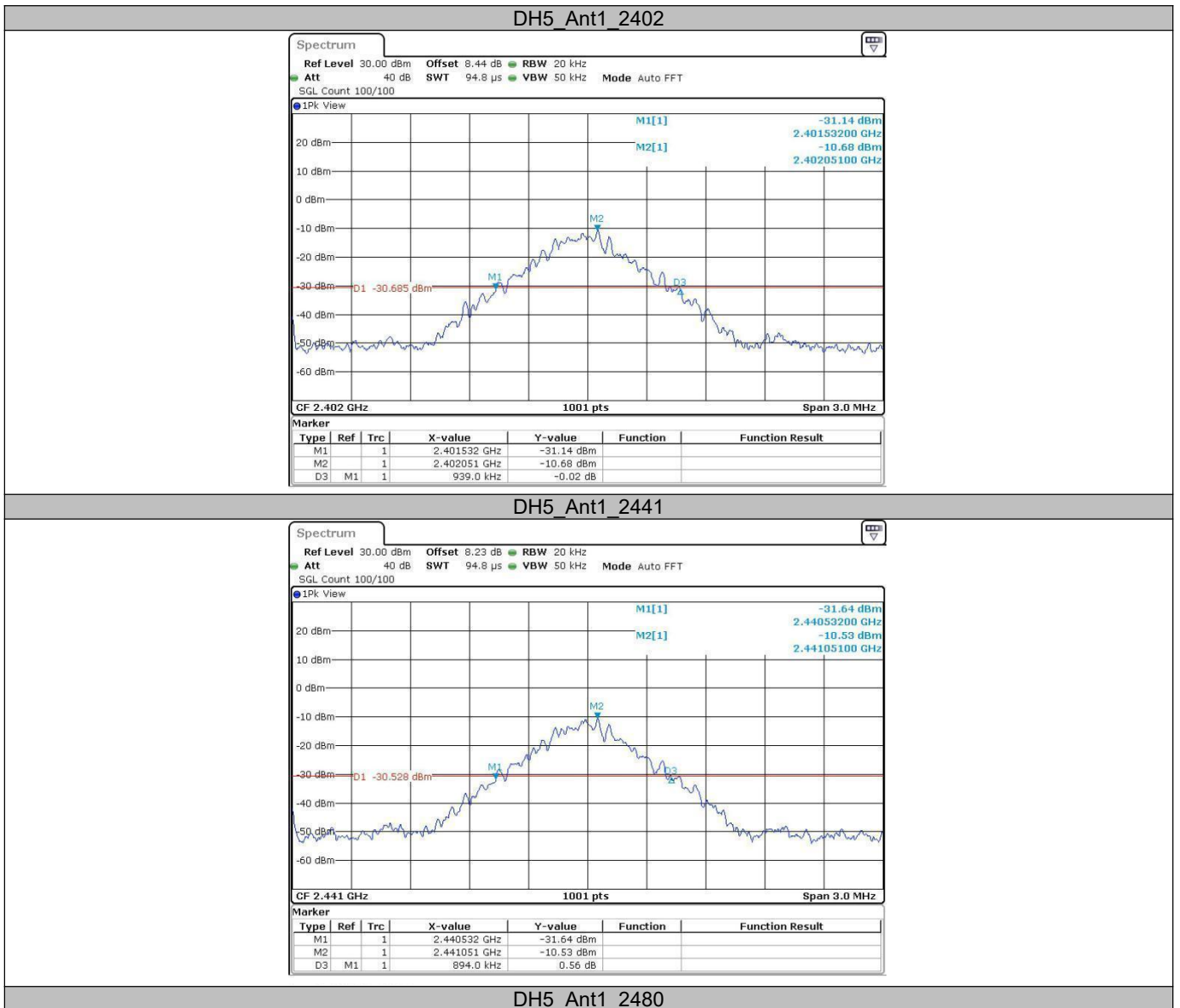
Appendix

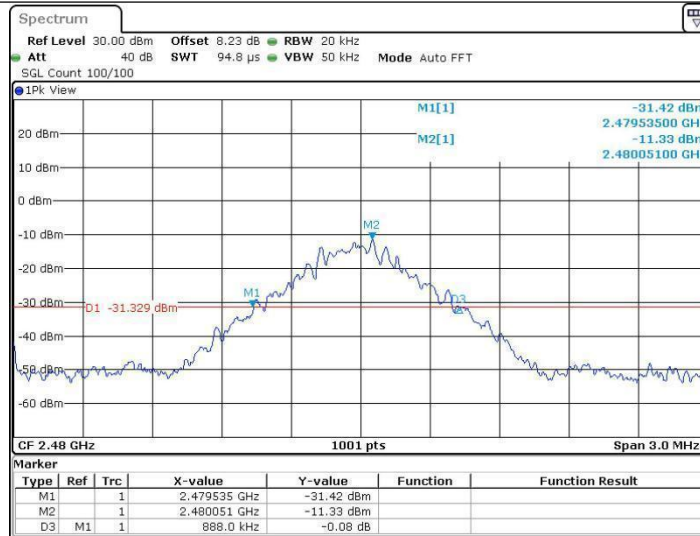
9.1 Appendix A: 20dB Emission Bandwidth

9.1.1 Test Result

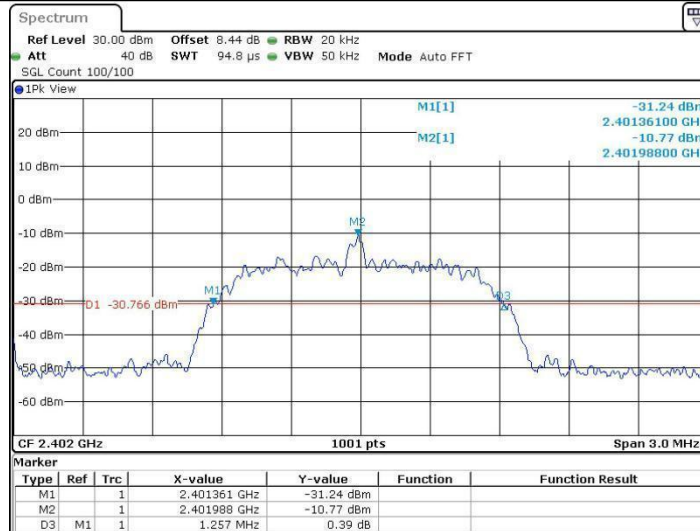
TestMode	Antenna	Channel	20db EBW[MHz]	FL[MHz]	FH[MHz]	Limit[MHz]	Verdict
DH5	Ant1	2402	0.939	2401.532	2402.471	---	PASS
		2441	0.894	2440.532	2441.426	---	PASS
		2480	0.888	2479.535	2480.423	---	PASS
2DH5	Ant1	2402	1.257	2401.361	2402.618	---	PASS
		2441	1.287	2440.358	2441.645	---	PASS
		2480	1.311	2479.334	2480.645	---	PASS

9.1.2 Test Graphs

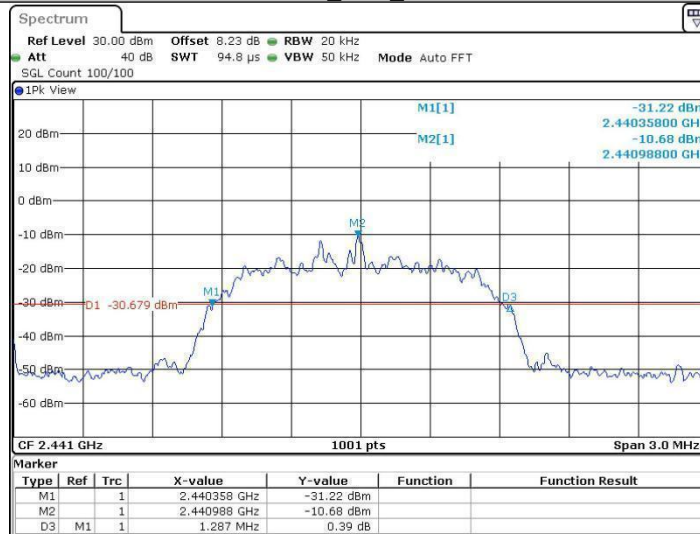




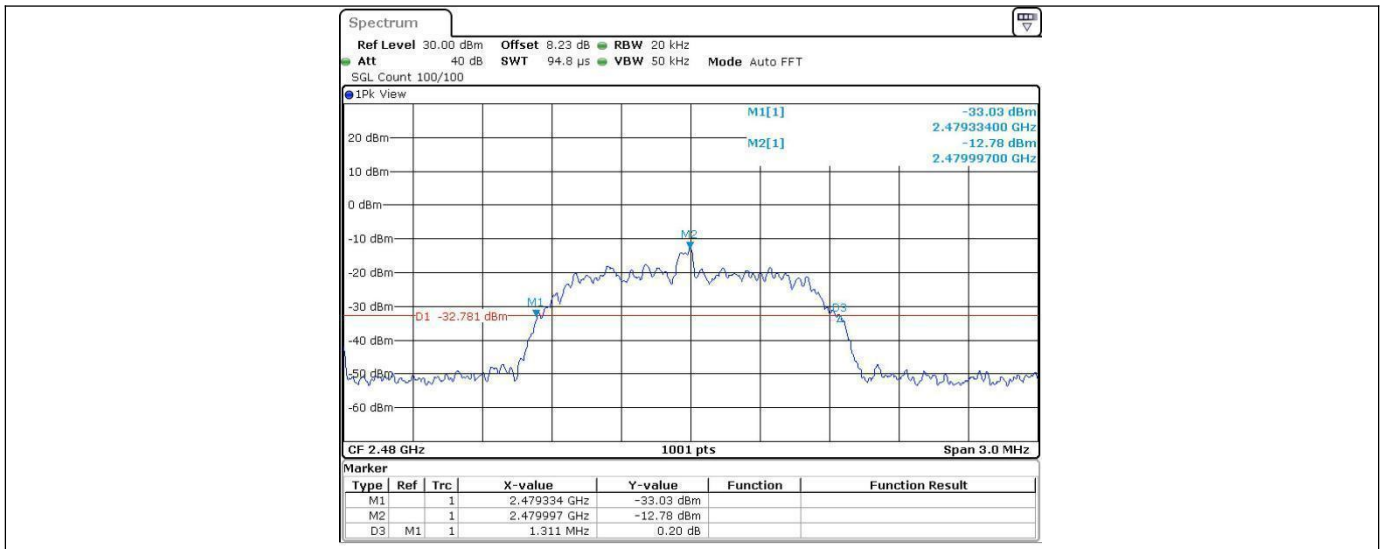
2DH5 Ant1 2402



2DH5 Ant1 2441



2DH5 Ant1 2480

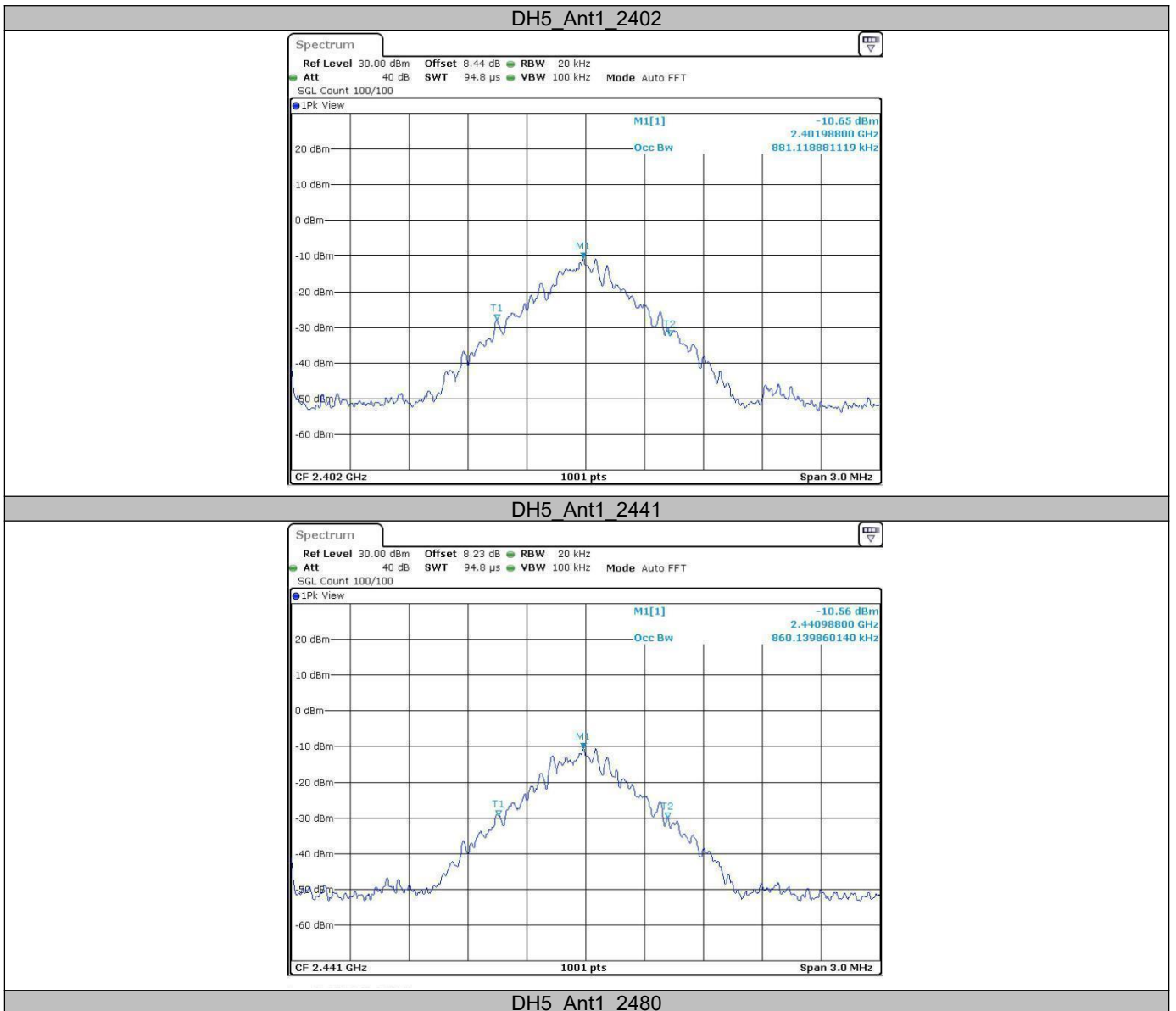


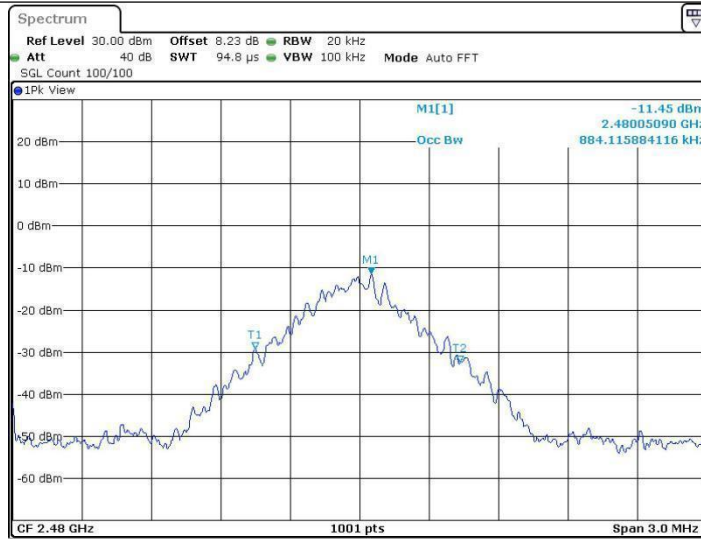
9.2 Appendix B: Occupied Channel Bandwidth

9.2.1 Test Result

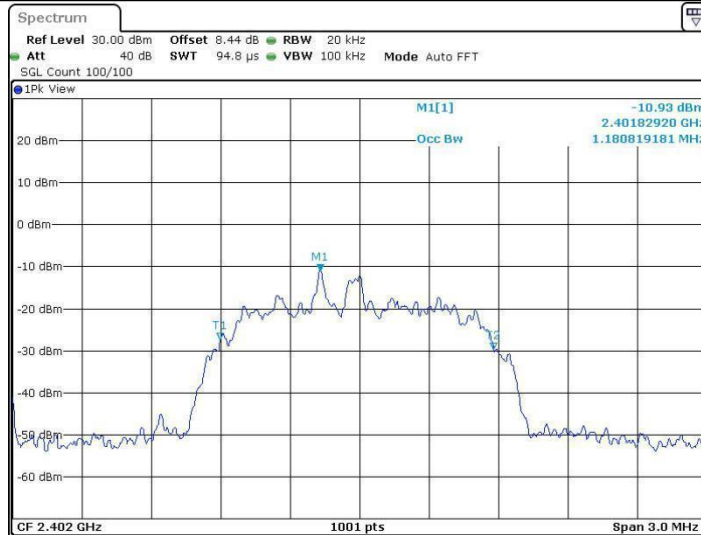
TestMode	Antenna	Channel	OCB [MHz]	FL[MHz]	FH[MHz]	Limit[MHz]	Verdict
DH5	Ant1	2402	0.881	2401.547	2402.429	---	PASS
		2441	0.86	2440.556	2441.417	---	PASS
		2480	0.884	2479.547	2480.432	---	PASS
2DH5	Ant1	2402	1.181	2401.398	2402.578	---	PASS
		2441	1.196	2440.392	2441.587	---	PASS
		2480	1.187	2479.398	2480.584	---	PASS

9.2.2 Test Graphs

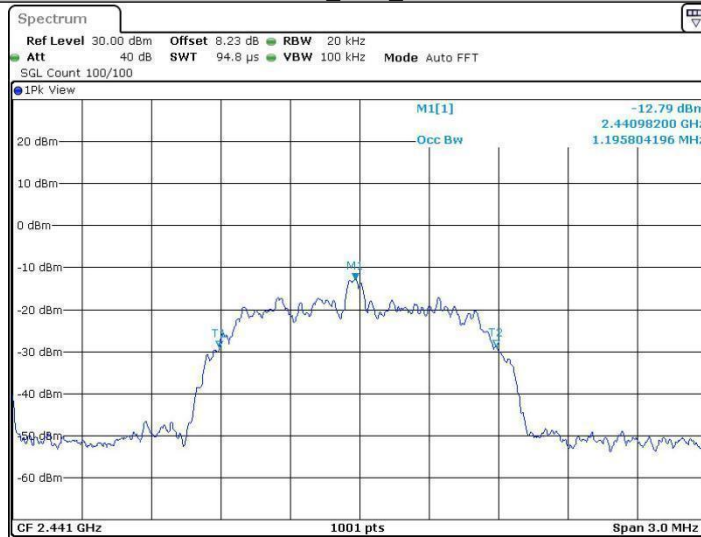




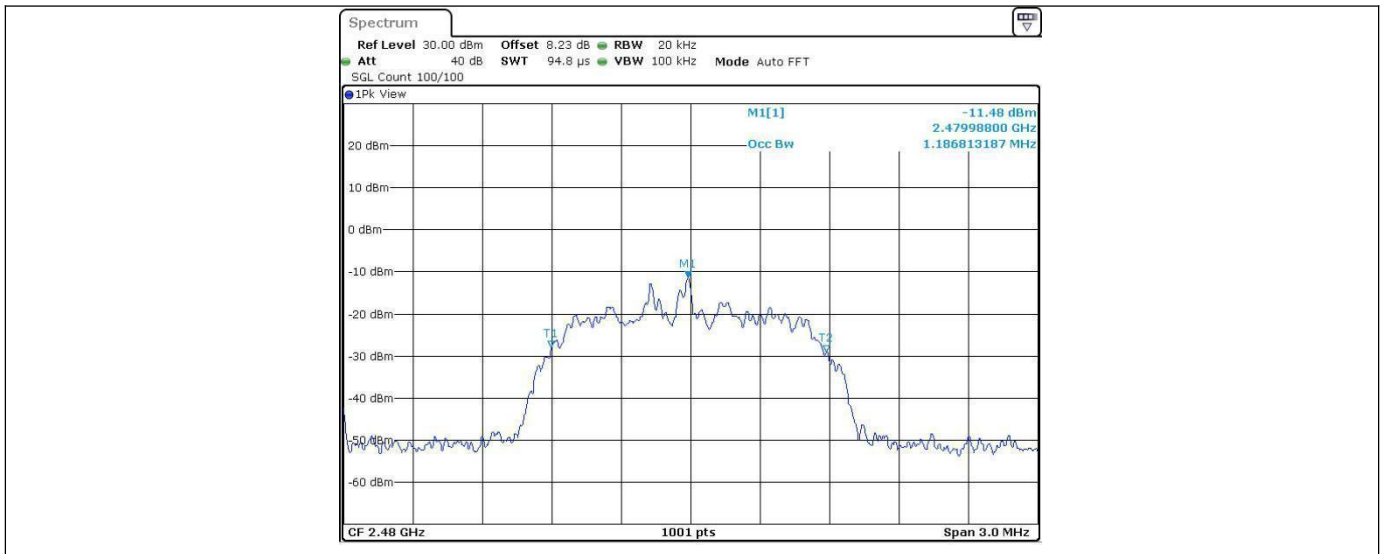
2DH5_Ant1_2402



2DH5_Ant1_2441



2DH5_Ant1_2480



9.3 Appendix C: Maximum conducted output power

9.3.1 Test Result

TestMode	Antenna	Channel	Result[dBm]	Limit[dBm]	Verdict
DH5	Ant1	2402	-6.48	≤30	PASS
		2441	-6.61	≤30	PASS
		2480	-7.23	≤30	PASS
2DH5	Ant1	2402	-6.21	≤30	PASS
		2441	-6.1	≤30	PASS
		2480	-7.38	≤30	PASS

9.3.2 Test Graphs

