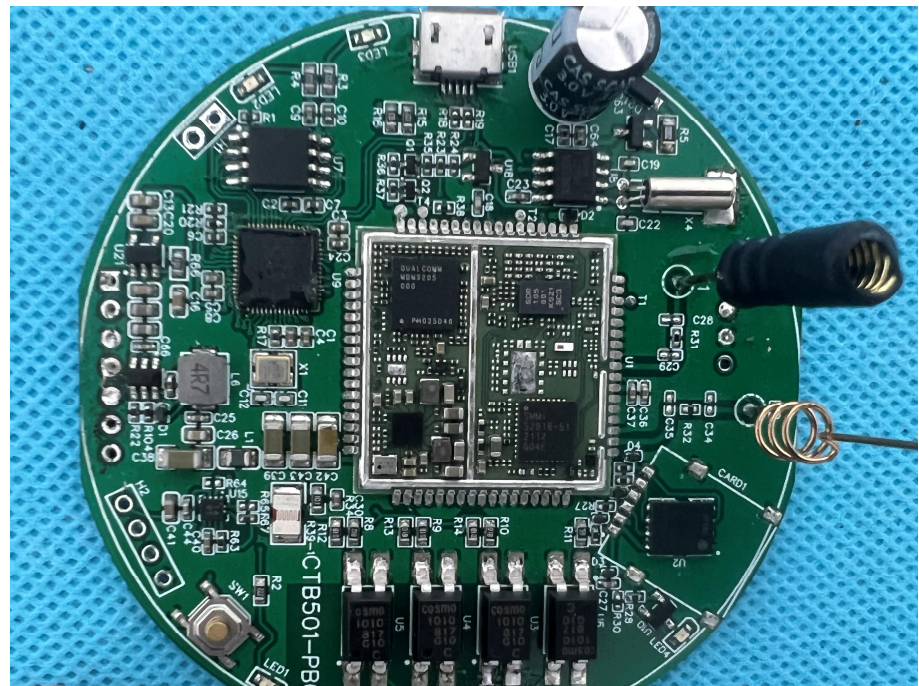
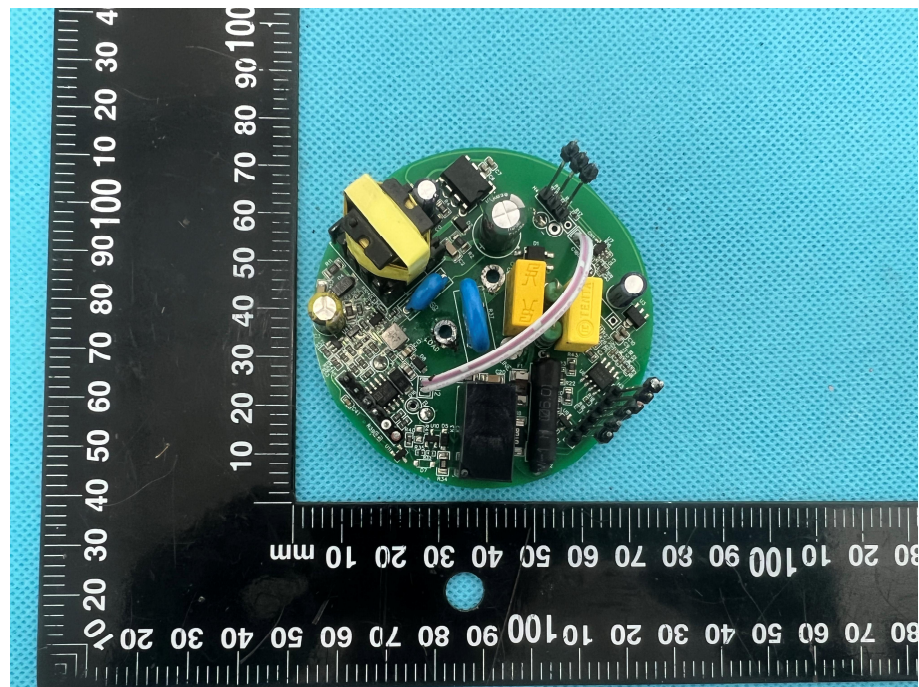
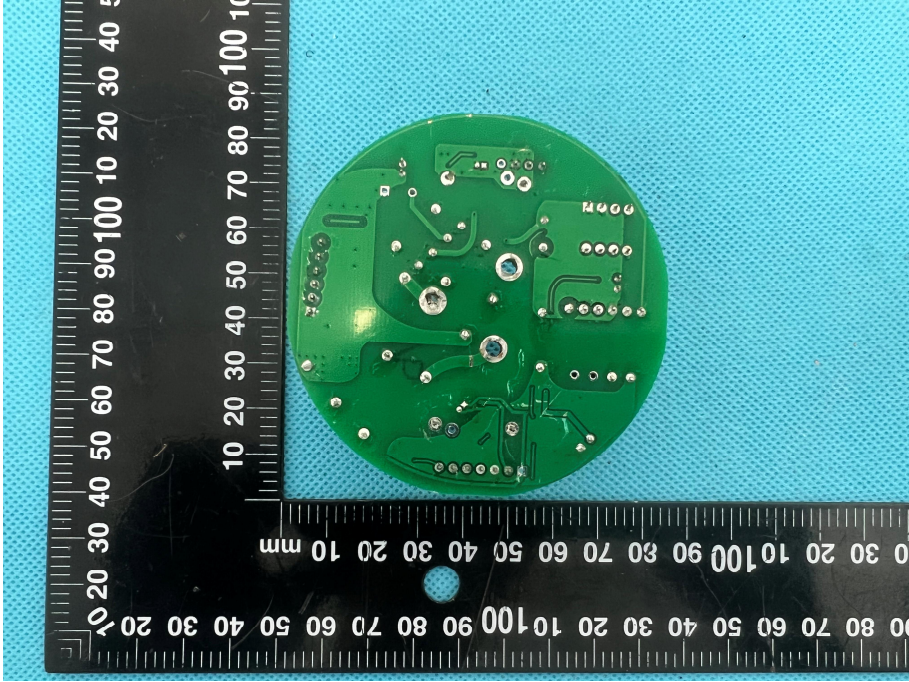



Solder
Board-Component View
4



Solder
Board-Component View
5



<p style="text-align: center;">Solder Board-Component View 6</p>	 <p>A photograph showing the back of a circular green PCB with various components and solder joints. A black ruler with white markings is placed to the left and bottom of the board for scale. The board is set against a blue textured background.</p>
<p style="text-align: center;">Antenna View</p>	 <p>A photograph showing the front of the circular green PCB. A white NB-IOT antenna module is mounted on the board. A black cylindrical cap is placed to the right of the board. A red line points from the text 'NB-IOT Ant' to the antenna module. A black ruler with white markings is placed to the left and bottom of the board for scale. The board is set against a blue textured background.</p> <p>NB-IOT Ant</p>