



GLEDOPRO

LED Dimmer Controller Pro

User Instruction



Thanks for buying our products.
 In this manual we will explain the connection of wires and the connection with a ZigBee Light Link Gateway.
 These devices works with many ZigBee Light Link /ZigBee 3.0 Gateways* like Philips Hue, Amapo Echo Plus or SmartThings.

Wire Connection:

1. Please prepare the cable like picture P1 and strip the isolation to 9-10 mm. The cable cross-section must be between 0,33 and 2,08mm²(AWG22-14).
2. Now push down the terminal with a screwdriver and put in the cable, see picture P2.
3. Take the screwdriver away and the cable is connected with the terminal.

In Figure P3, an example of the connection of an LED controller is shown:

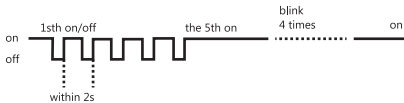
- P3 for single color LED product, use a Dimmer controller.

Connection with Gateway:

1. Connect the LED product to the controller see section "wire connection".
2. Start the device searching on the ZigBee Light Link/ZigBee 3,0 Gateway, it could take some time. If the Gateway does not find the device, plug power off/on or make a reset.
3. The Gateway found your device and you can assign it to the different rooms/zones/groups.
4. Now you can use the device,

Reset:(Button reset: please see the last page.)

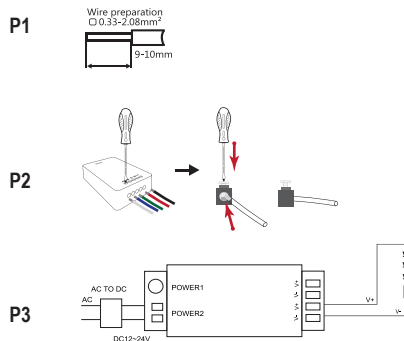
1. Switch on your device.
2. Now switch off and on within 2 seconds.
3. Repeat off/on five times.
4. Reset is done when the device is switched on in the fifth time and the light stays on after blinking 4 times.



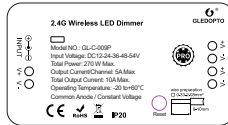
Please check the Compability Chart showing what gateways and how our products work with, this chart just shows the gateways we test, we will keep updating it . Welcome to check with our sales and website.



LED-Trading Tobias Ebert
 Schoeneicher Str. 42, Schoeneiche b. Berlin, Germany, 15566
 0049 30 641 689 17 info@led-trading.de



Button reset



- +1.Short press to turn on or off
- +2.Long press over 2 seconds, the LED strip blinks 3 times, Reset is successful.

Product Parameter

Product Name	LED Dimmer Controller Pro
Model NO.	GL-C-009P
Size	23.5x48x89mm
Input Voltage	DC12-24-36-48-54 V
Protection Rate	IP20
Total Power	270 W Max
Output Current/Channel	5 A Max
Total Output Current	10 A Max
Operating Temperature	-20°C~60°C

Features:

Gateways/hubs Gledopto zigbee products Directly work with:
 HUE,Amazon echo plus, smartthings,Osram lightify,Homee etc
 Via Hue gateway, can work with google home, all other alexa devices

Apps work with Hue gateway:

Hue,hueparty,hue Disco,iConnectHue,Hue Widget,Light DJ,etc

Work with Home Assistant:

<http://bitly.ws/dELh>

Work with Homekit :

<http://bitly.ws/ejZY>

Sync effect with screenbloom:

Sync your lights with movies ,music, and games,Enjoy the lighting effect which synchronizes with the plot of the picture immediately,and experience the more delicate atmosphere lighting effect.

How to sync?

Gledopto HDMI SYNC Box

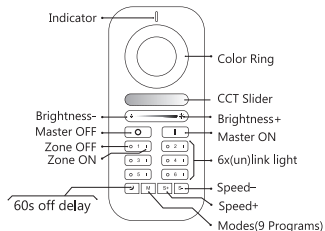
Please follow this website: <http://www.screenbloom.com/>

Sync Show Demo: https://youtu.be/zZjtJMy_774

Q&A or more info, please go to: www.gledopto.com or email to sales@gledopto.com, or <https://www.reddit.com/r/Gledopto/> (Not official)

RGB+CCT Remote Control (GL-RC-006Z)

This manual describes RGB+CCT remote control used for our RGB+CCT products. Remote control can control the LED lights up to six different Zones, change the color, dim/brighten the lights, warm/cool white, different programs. In this manual, you will learn.



Mode description

- Mode 1: Static warm light (warm light alone)
- Mode 2: Static white light (cold light and warm light are equally bright)
- Mode 3: Static cold light (cold light alone)
- Mode 4: Static red light
- Mode 5: Static green light
- Mode 6: Static blue light
- Mode 7: RGB fade in fade out (Color fade in fade out from red to green, then to blue, then to red, and so on, speed adjustable.)
- Mode 8: RGB flash (Color flash from red to green, then to blue, then to red, and so on, speed adjustable.)
- Mode 9: Color breathing (In this mode, the brightness of current color will cycle from from 100%-0%, then from 0%-100%. At the same time, you can switch the color and have a cycle repeatedly. Pressing switch /mode button to exit this mode.)

Compatibility Chart

Gateways	Philips Hue	Amazon Echo Plus	Smart Things	IKEA Tradfri	Conbee	Terncy	Homee	Smart Friends
Item	①	②	③	④	⑤	⑥	⑦	⑧
Dimmer	Yes/Ja	Yes/Ja	Yes/Ja	Yes/Ja	Yes/Ja	Yes/Ja	Yes/Ja	Yes/Ja

①②③④⑤⑥ are already tested by GLEDOPTO, ⑦⑧ are from our customers, just for your information, not verified by GLEDOPTO.

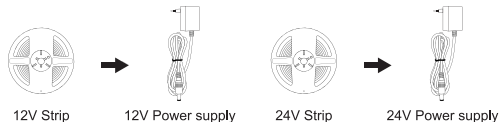
How to link & use with remote control

- Within 3 seconds after power on, click the "on" button of the group to conduct code matching, and the LED light turns green, indicating successful code matching.
- Long press the "off" button of the remote control to enter the night light mode, and the brightness and color can still be adjusted at this time.
- Long press the small moon key to enter the 60 seconds delay shutdown state.
- Long press M key to enter automatic mode.

How to unlink

- If the LED is still connected to the ZigBee gateway, long press the "on" button on the remote control within 3 seconds after power on or press the button for 5 times continuously, the light will flash for 3 times in the current color;
- If the LED is not connected in the ZIGBEE gateway state, long press the "on" button on the remote control within 3 seconds after power on or press the button for 5 times continuously, then the LED light will be fully bright and flashing for 4 times;

Attention:



When you use LED Strip Light, please use the right LED Power Supply accordingly.

FCC Warning Statement

Changes or modifications not expressly approved by the party responsible for compliance could void the user's authority to operate the equipment. This equipment has been tested and found to comply with the limits for a Class B digital device, pursuant to Part 15 of the FCC Rules. These limits are designed to provide reasonable protection against harmful interference in a residential installation. This equipment generates uses and can radiate radio frequency energy and, if not installed and used in accordance with the instructions, may cause harmful interference to radio communications. However, there is no guarantee that interference will not occur in a particular installation. If this equipment does cause harmful interference to radio or television reception, which can be determined by turning the equipment off and on, the user is encouraged to try to correct the interference by one or more of the following measures:

- Reorient or relocate the receiving antenna.
- Increase the separation between the equipment and receiver.
- Connect the equipment into an outlet on a circuit different from that to which the receiver is connected.
- Consult the dealer or an experienced radio/TV technician for help.