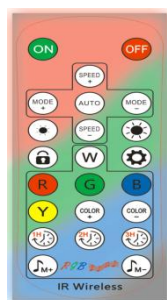


**Product Name:** LED intelligent WiFi controller

**Product model:** HH-IR23#AR WiFi

### 1. Product overview:

This product is widely used in home, hotel, KTV evening party, party and other indoor decoration with music. Instantly turn the environment into a more active atmosphere, and dazzle yourself into a passionate moment with this environment. Adopt infrared controller advanced computer control chip, can be used to control all kinds of low-voltage DC 5V-24V LED magic color as the light source of lamps and lanterns with module, easy wiring, simple use and other advantages. Remote control brightness adjustment, static color selection and various dynamic lighting effect and music atmosphere effect can be carried out through the infrared 23 key remote control.



### 2. Technical parameters:

- Operating temperature: -20-60 °C
- Power supply voltage: DC 5V-24V
- Output: 3 channels
- Remote control distance: 7-10m
- Remote control mode: point-to-point remote control
- Connection: Gongyang
- Remote control size:
- Controller size:
- Net weight:
- Total weight:
- Static power consumption: <0.5W

●Output current: <2A (each circuit) 5V<30W12V<72W, 24V<144W

### 3. Controller:

#### 4. Instructions:

##### ①Instructions for Remote Control:

The remote has 23 buttons



: In any state, press to close and open the controller.



: Press this button in the dynamic mode to adjust the speed of the dynamic mode plus + minus -, a total of 10 poles; then in the music rhythm mode, the rhythm sensitivity can be adjusted; in the setting state, the number of lights can be adjusted to add + minus -.



: Press this button in the power-on state to switch the dynamic mode plus + minus a total of 121 changes in effect, in the setting state can adjust the number of lights plus + minus -.



: Press this button in the power-on state to automatically cycle all the patterns.



: Press this button in the power-on state for brightness adjustment - + a total of 10 pole dimming.



: Children lock Press the key of the remote control to lock, then press the key to unlock, all remote control keys can be used.



: Under the boot state, press this button 6 times and a white light will flash to enter the setting state. When setting the RGB line sequence, for example, press the red button press the green button press the green button press the blue button press the blue button to set the stop operation for 10 seconds automatically saved state. When setting the number of points, it is also in the power-on state. Press the button for 6 times and a white light will flash to enter the setting state.

After the white light is lit, press SPEED to add and subtract the number of points for one point and then press MODE to add three points and three points to the number of points you need.



: Press this button in the boot state: static white static red static green static static blue static yellow COLOR+ static COLOR plus COLOR- static COLOR minus.



: There are 8 different music effects with the music mode plus or minus keys.

②Instructions for on-board keys



Red indicator light: when the indicator light is on, it indicates the energized state of the equipment.

Green indicator light; Infrared indicator light, the remote control press the green light once and it will flash, indicating that the infrared signal is received. When the remote control has no operation, the indicator light is not on. When the green light flashes, it enters the distribution network mode.



: In static mode, press this button briefly to adjust the brightness level 1-10. In dynamic mode, press this button to adjust the change speed of level 1-10; in rhythmic state, press this button to adjust the sensitivity of level 1-10. Long press for about 3 seconds to turn off the light.



: Pressing this key in the boot state is a dynamic mode switch plus + minus a total of 121 changes in effect.



: When the light is turned on, long press this button to enter the rhythm mode, short press can switch static colors, with 8 rhythm effects.

## 5. Connection mode of optical tape and matters needing attention:



First connect the load line, then connect the power line; Before power-on, ensure that there is no short circuit between cables.

When operating, the remote control points to the infrared receiving head to ensure that there are no obstacles between the remote control and the receiving head;

## 6. APP(TuyaSmart) Connection instructions and download QR code:



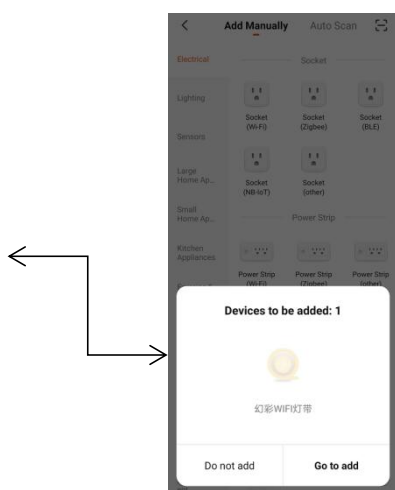
Step 1: Enter the state of distribution network. There are two ways to enter the state of distribution network.

① Long press the ON button ON the infrared remote control for about 5 seconds, and the green indicator flashes into the distribution network mode.

② The device is switched on and off continuously for 3 times, and the green indicator light flashes into the distribution network mode.

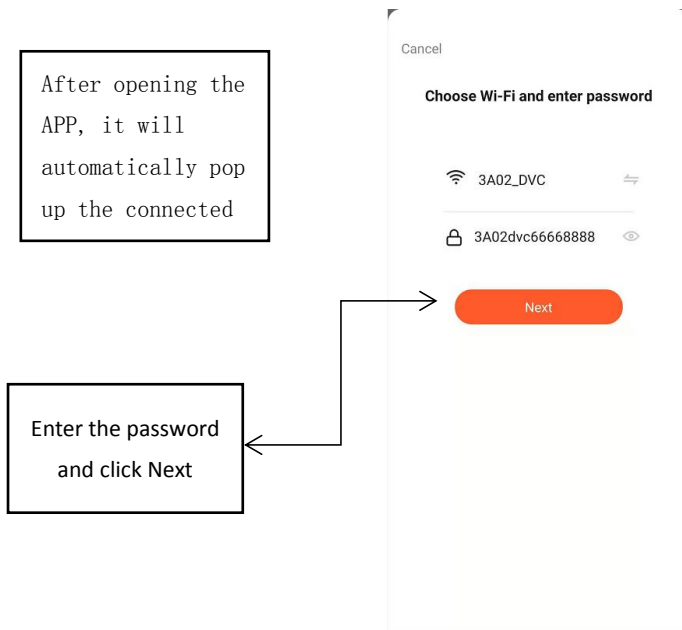
③ Long press the MODE+ key for 3 seconds to enter the distribution MODE.

Step 2: Open the APP(TuyaSmart)



The third step. Enter the WiFi password.

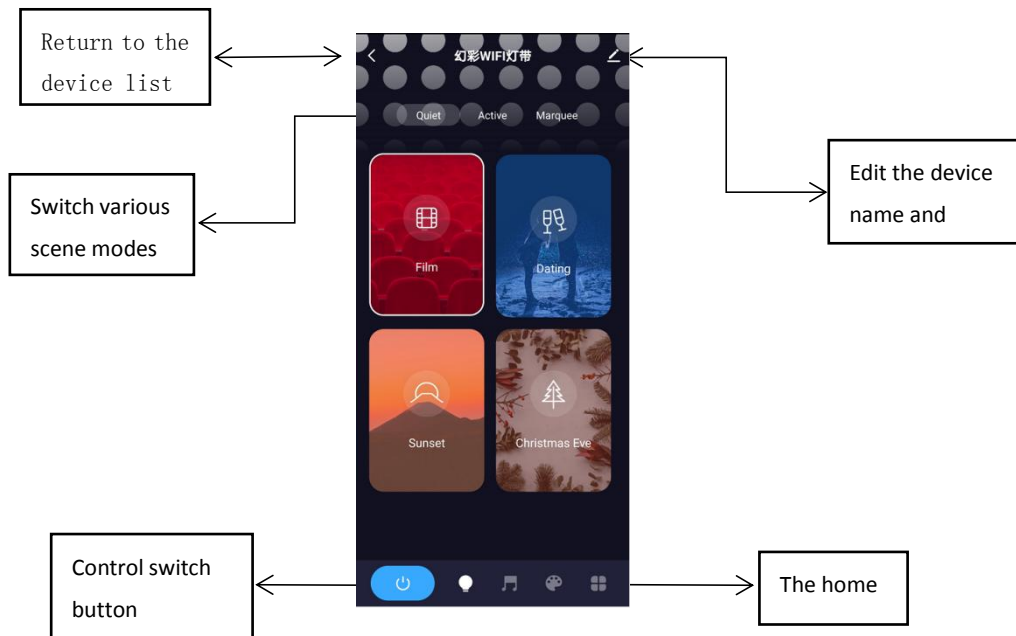
**Note: The router must be 2.4GHz WiFi**



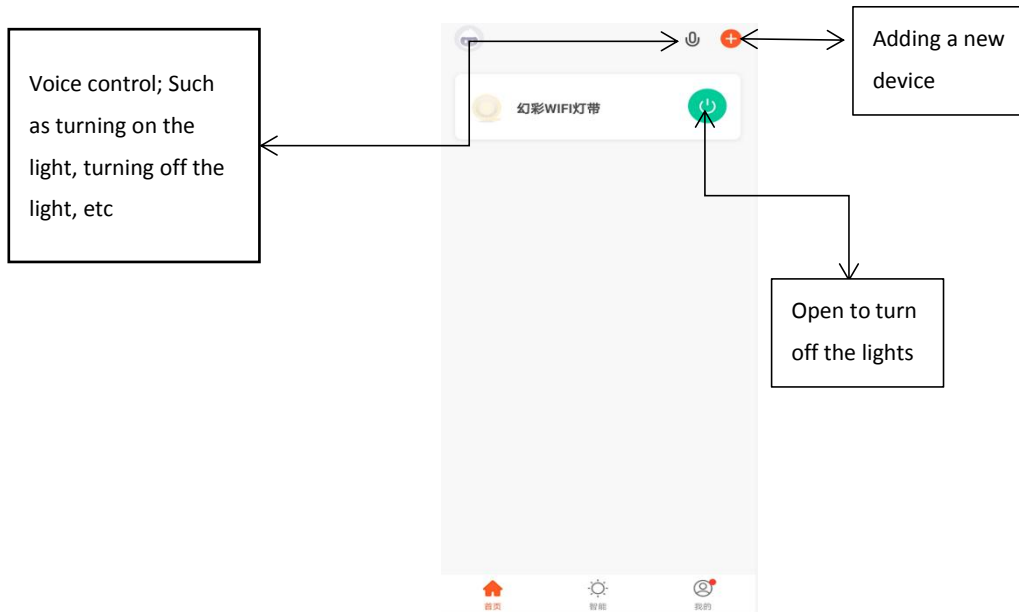
Click finish to enter the operation panel after successful distribution network:

### 7. Description of each interface of APP:

#### ① Operation instructions for scene mode;

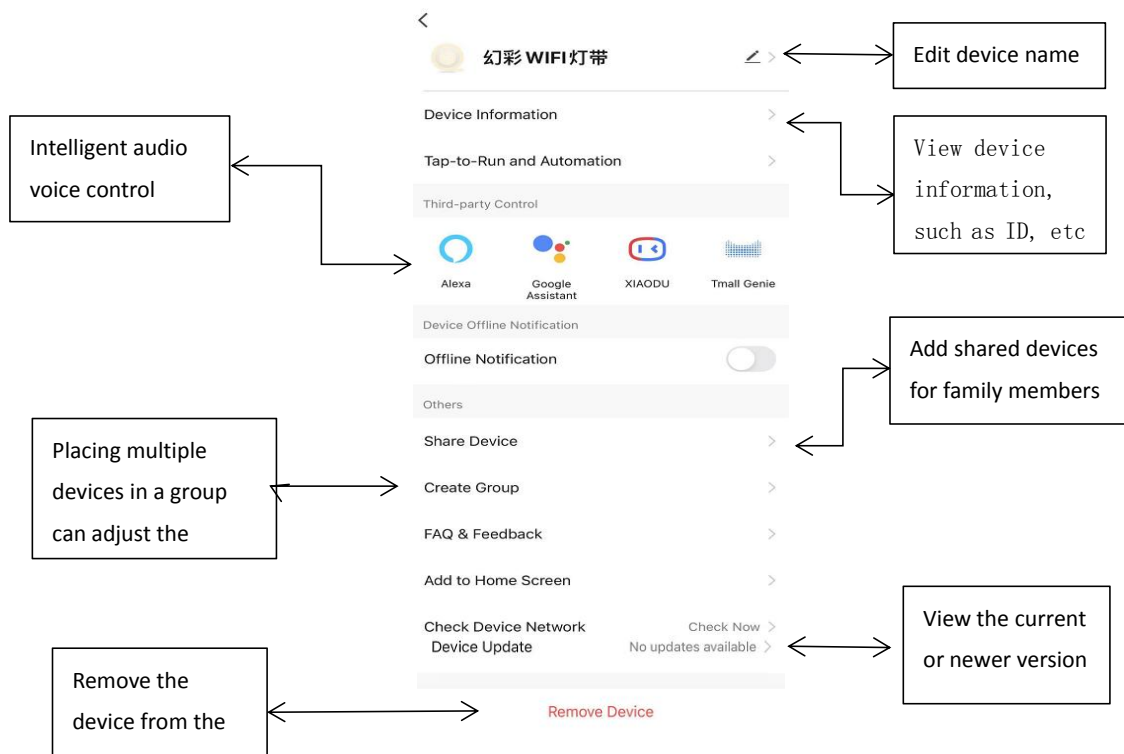


②The home page ;



Long press the device in the list to remove it. After making sure that the device enters the state of distribution network, the indicator light flashes.

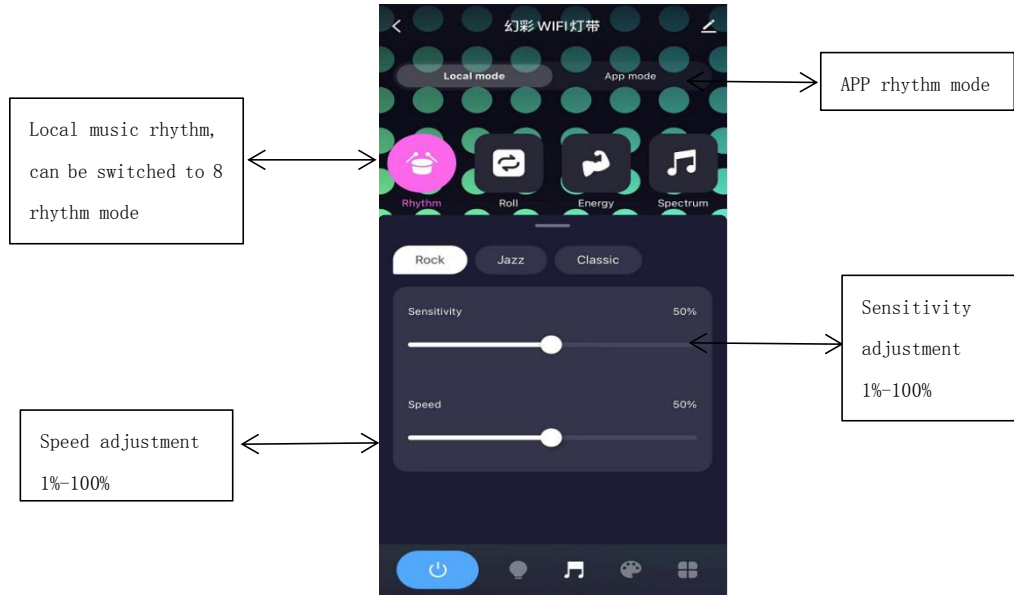
③Edit interface description;



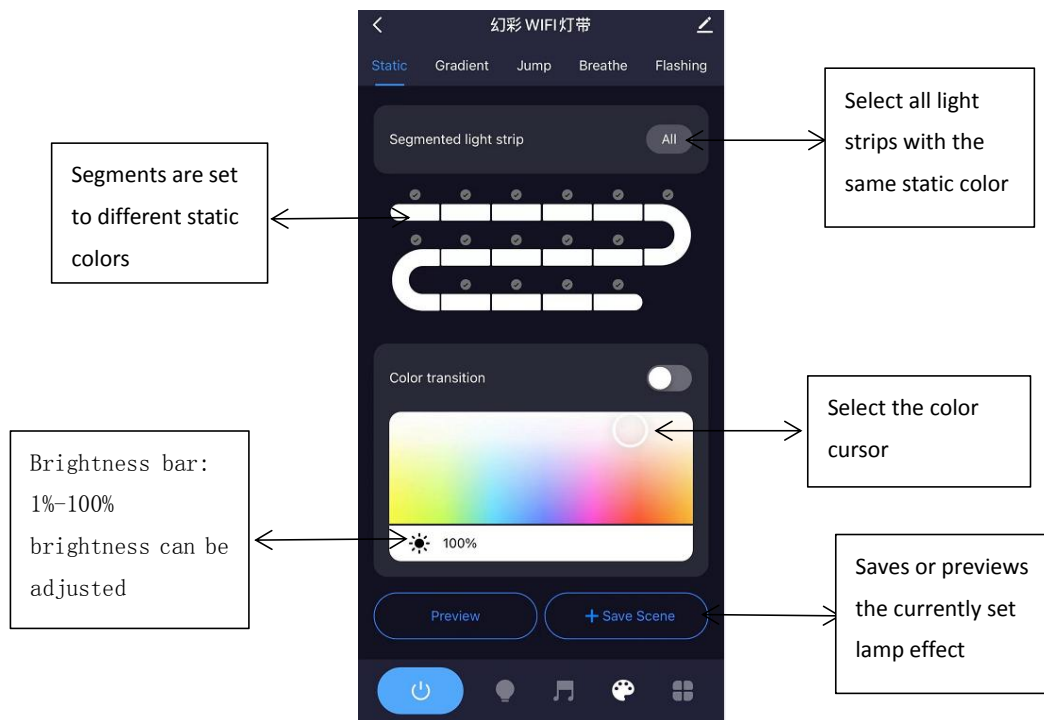
Note: Family members who add shared devices must have registered APP

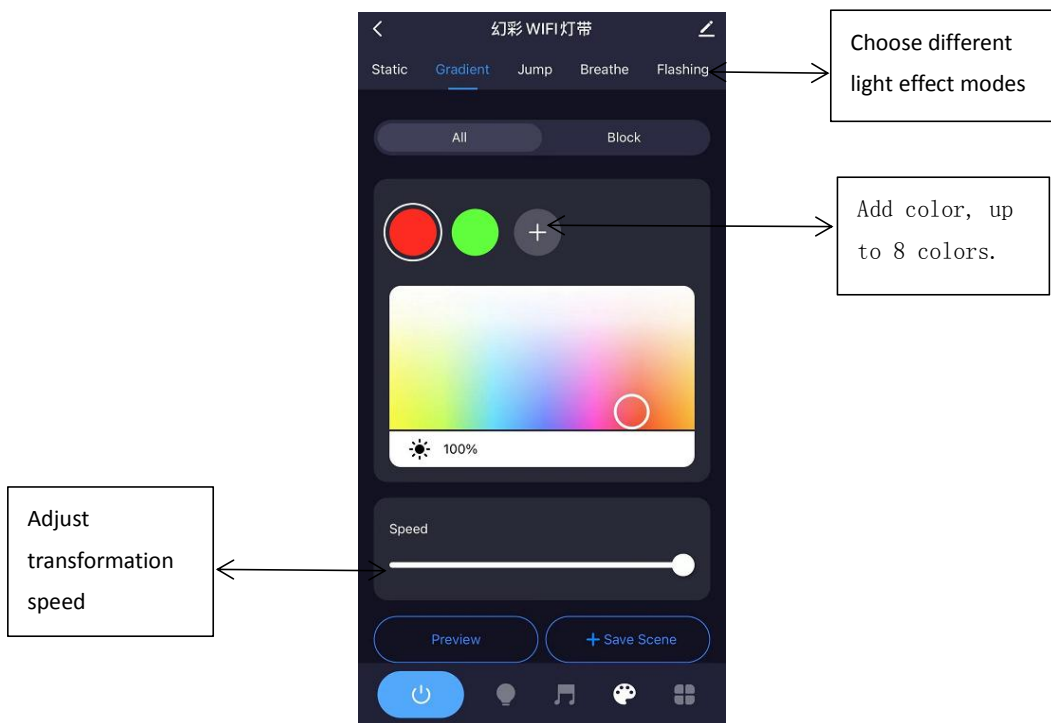
(TuyaSmart) and log in the account. After joining, they can operate the device.

#### ④ Music interface description;



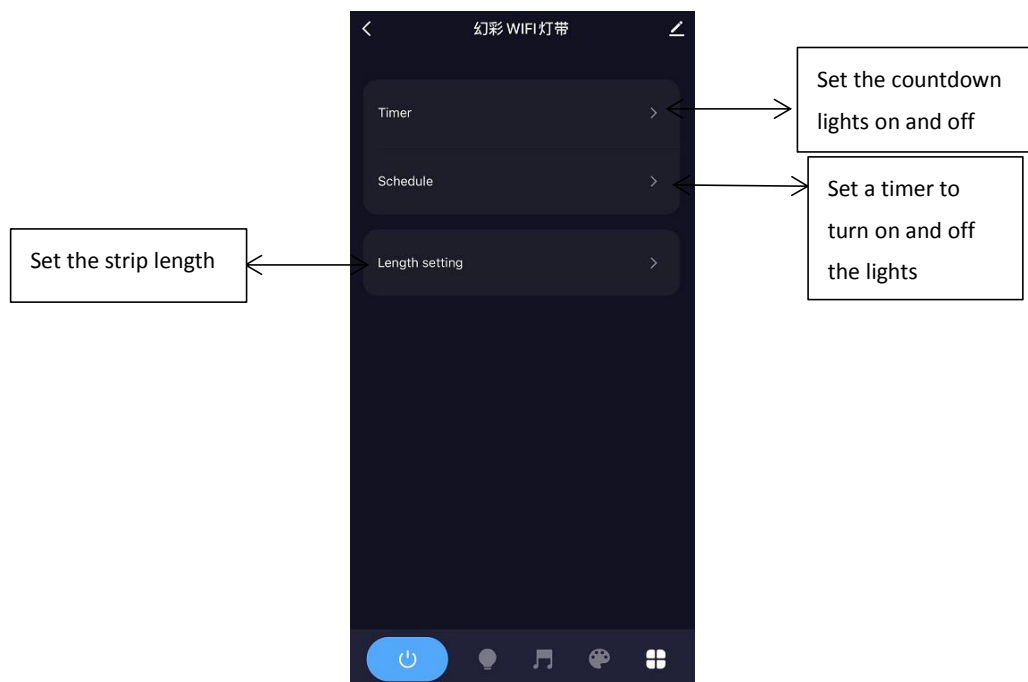
#### ⑤ Custom operation instructions;





Note; Edit the saved custom scene to switch to the main page to view or edit the custom scene name.

⑥Setting instructions for timing, countdown and length of light belt;





## 8、Failure analysis and solution;

The fault phenomenon	Cause analysis	The solution
Not bright	1、 The switching power supply is dead 2、 The positive and negative poles of the power supply are connected negatively 3、 Wrong or insecure connection	1、 check the switching power supply 2、 Correct it  3、 Check the wiring
Wrong color	4、 RGB line wrong	4、 RGB lines should be reconnected
Mode unchanged	5、 The speed is set too slowly	5、 Please press the speed button to speed up
Can't remote control	6、 batteries 7、 Out of control distance	6、 Replace the battery 7、 Reduce remote control distance

## 9. FCC Caution.

This device complies with part 15 of the FCC Rules. Operation is subject to the following two conditions: (1) This device may not cause harmful interference, and (2) this device must accept any interference received, including interference that may cause undesired operation.

Any Changes or modifications not expressly approved by the party responsible for compliance could void the user's authority to operate the equipment.

**Note:** This equipment has been tested and found to comply with the limits for a Class B digital device, pursuant to part 15 of the FCC Rules. These limits are designed to provide reasonable protection against harmful interference in a residential installation. This equipment generates uses and can radiate radio frequency energy and, if not installed and used in accordance with the instructions, may cause harmful interference to radio communications. However, there is no guarantee that interference will not occur in a particular installation. If this equipment does cause harmful interference to radio or television reception, which can be determined by turning the equipment off and on, the user is encouraged to try to correct the interference by one or more of the following measures:

-Reorient or relocate the receiving antenna.

- Increase the separation between the equipment and receiver.
- Connect the equipment into an outlet on a circuit different from that to which the receiver is connected.
- Consult the dealer or an experienced radio/TV technician for help.

**\*RF warning for Mobile device:**

This equipment complies with FCC radiation exposure limits set forth for an uncontrolled environment. This equipment should be installed and operated with minimum distance 20cm between the radiator & your body.

