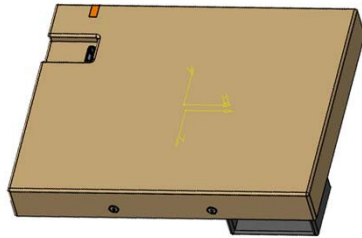


## User's manual



Wireless charger Unit

BH provides wireless charging unit and car maker combines wireless charging unit and frame. The combined wireless charging unit is installed the front area of center console.



1. Type 1 : Located in arm rest

2. Type 2 : Located in front of arm rest

3. Type 3 : Located in center dashboard



## User's manual

---

1. Put your phone on wireless charging pad directly and on the center of charging pad.



2. Check the phone if it was charged or not. you can check on the mobile phone screen  
If the phone was not charged, please try to put your phone on the charging area again.

- Mainly this wireless charging unit can be used for wireless charging mobile phone.
- Also can charge all devices meet WPC standards

# FCC, IC Compliance statement

---

This device complies with part 15 of the FCC Rules. Operation is subject to the following two conditions:

(1) This device may not cause harmful interference, and (2) this device must accept any interference received, including interference that may cause undesired operation.

Changes or modifications not expressly approved by the manufacturer (or party responsible) for compliance could void the user's authority to operate the equipment

FCC RF Radiation Exposure Statement: This equipment complies with FCC RF Radiation exposure limits set forth for an uncontrolled environment. This device and its antenna must not be co-located or operating in conjunction with any other antenna or transmitter. This equipment should be installed and operated with a minimum distance of 6cm between the radiator and your body.

IC Radiation Exposure Statement: This equipment complies with IC radiation exposure limits set forth for an uncontrolled environment. This equipment should be installed and operated with minimum distance 6 cm between the radiator & your body.

NOTE: THE MANUFACTURER IS NOT RESPONSIBLE FOR ANY RADIO OR TV INTERFERENCE CAUSED BY UNAUTHORIZED MODIFICATIONS TO THIS EQUIPMENT. SUCH MODIFICATIONS COULD VOID THE USER'S AUTHORITY TO OPERATE THE EQUIPMENT.

This device contains licence-exempt transmitter(s)/receiver that comply with Innovation, Science and Economic Development Canada's licence-exempt RSS(s).

Operation is subject to the following two conditions:

- 1.This device may not cause interference.
- 2.This device must accept any interference, including interference that may cause undesired operation of the device.

Avis d'Industrie Canada sur l'exposition aux rayonnements

Cet appareil est conforme aux limites d'exposition aux rayonnements d'Industrie Canada pour un environnement non controle. Il doit etre installe de facon a garder une distance minimale de 6 centimetres entre la source de rayonnements et votre corps.

REMARQUE: LE FABRICANT N'EST PAS RESPONSABLE DES INTERFERENCES RADIOELECTRIQUES CAUSEES PAR DES MODIFICATIONS NON AUTORISEES APORTEES A CET APPAREIL. DE TELLES MODIFICATIONS POURRAIT ANNULER L'AUTORISATION ACCORDEE A L'UTILISATEUR DE FAIRE FONCTIONNER L'APPAREIL.

Cet appareil contient des emetteurs / recepteurs exempts de licence qui sont conformes aux RSS exempts de licence d'Innovation, Sciences et Developpement economique Canada.

L'exploitation est autorisee aux deux conditions suivantes :

- 1.L'appareil ne doit pas produire de brouillage;
- 2.L'appareil doit accepter tout brouillage radioelectrique subi, meme si le brouillage est susceptible d'en compromettre le fonctionnement.