

## USB Wireless Presentation Button

- User Guide
- Guide de l'utilisateur
- Bedienungsanleitung
- Guía del usuario
- Guida dell'utente
- Guia do usuário
- Användarhandbok
- Käyttöopas
- Podręcznik użytkownika
- Használati útmutató
- Руководство пользователя
- Užívateľská príruka
- Kullanıcı kılavuzu
- Gebruikshandleiding
- Οδηγός χρηστών
- 使用手冊(繁體)
- 使用手冊(简体)
- 사용자 안내서
- ユーザーガイド
- دليل المستخدم

# Compliance Information

## For U.S.A.

This device complies with part 15 of FCC Rules. Operation is subject to the following two conditions: (1) this device may not cause harmful interference, and (2) this device must accept any interference received, including interference that may cause undesired operation.

This equipment has been tested and found to comply with the limits for a Class B digital device, pursuant to part 15 of the FCC Rules. These limits are designed to provide reasonable protection against harmful interference in a residential installation. This equipment generates, uses, and can radiate radio frequency energy, and if not installed and used in accordance with the instructions, may cause harmful interference to radio communications. However, there is no guarantee that interference will not occur in a particular installation. If this equipment does cause harmful interference to radio or television reception, which can be determined by turning the equipment off and on, the user is encouraged to try to correct the interference by one or more of the following measures:

- Reorient or relocate the receiving antenna.
- Increase the separation between the equipment and receiver.
- Consult the dealer or an experienced radio technician for help.

**Warning:** You are cautioned that changes or modifications not expressly approved by the party responsible for compliance could void your authority to operate the equipment.

## For Canada

This Class B digital apparatus complies with Canadian ICES-003.

Cet appareil numérique de la classe B est conforme à la norme NMB-003 du Canada.

## CE Conformity for European Countries



The device complies with the requirements of the EEC directive 89/336/EEC as amended by 92/31/EEC and 93/68/EEC Art.5 with regard to "Electromagnetic compatibility", and 73/23/EEC as amended by 93/68/EEC Art.13 with regard to "Safety."

## Following information is only for EU-member states:

The mark shown to the right is in compliance with the Waste Electrical and Electronic Equipment Directive 2002/96/EC (WEEE).

The mark indicates the requirement NOT to dispose the equipment as unsorted municipal waste, but use the return and collection systems according to local law.



# Important Safety Instructions

1. Read these instructions completely before using the equipment.
2. Keep these instructions in a safe place.
3. Heed all warnings.
4. Follow all instructions.
5. Do not use this equipment near water. Warning: To reduce the risk of fire or electric shock, do not expose this apparatus to rain or moisture.
6. Clean with a soft, dry cloth. If further cleaning is required, see “Cleaning the Display” in this guide for further instructions.
7. Do not block any ventilation openings. Install the equipment in accordance with the manufacturer’s instructions.
8. Do not install near any heat sources such as radiators, heat registers, stoves, or other devices (including amplifiers) that produce heat.
9. Refer all servicing to qualified service personnel. Service is required when the unit has been damaged in any way, such as: if liquid is spilled onto the unit, if the unit is exposed to rain or moisture, or if the unit does not operate normally or has been dropped.

# Getting Started

**Congratulations on your purchase of an USB Sharing Button.**

**NOTE:** The word “Button” in this user guide refers to the USB Screen Sharing Button.

## Device Requirements

### 1. Receiver Requirements

- 1.1 ESharePro APP is installed and activated.
- 1.2 Network: 5G Wi-Fi hotspot or LAN or WLAN.

### 2. Sender Requirements

- 2.1 Windows PC: Win 7/Win 8/Win 10
- 2.2 MacBook: MacOS 10.10 or later

## Quick Installation

1. Connect the Button’s USB and USB jacks to the corresponding inputs of a laptop.
2. Press the present key to start. Installation is complete.

# Using the USB Screen Sharing Button

## Pairing

### 1. Pair With Android Receiver

#### 1.1 Auto Pair

- **Prerequisite:** 5G Wi-Fi hotspot is enabled on the Android receiver.
- **Steps:**
  1. Connect the Button to the USB port of Android receiver and the Button will pair with the receiver automatically. Please don’t unplug the Button while pairing, as shown in Figure 1.

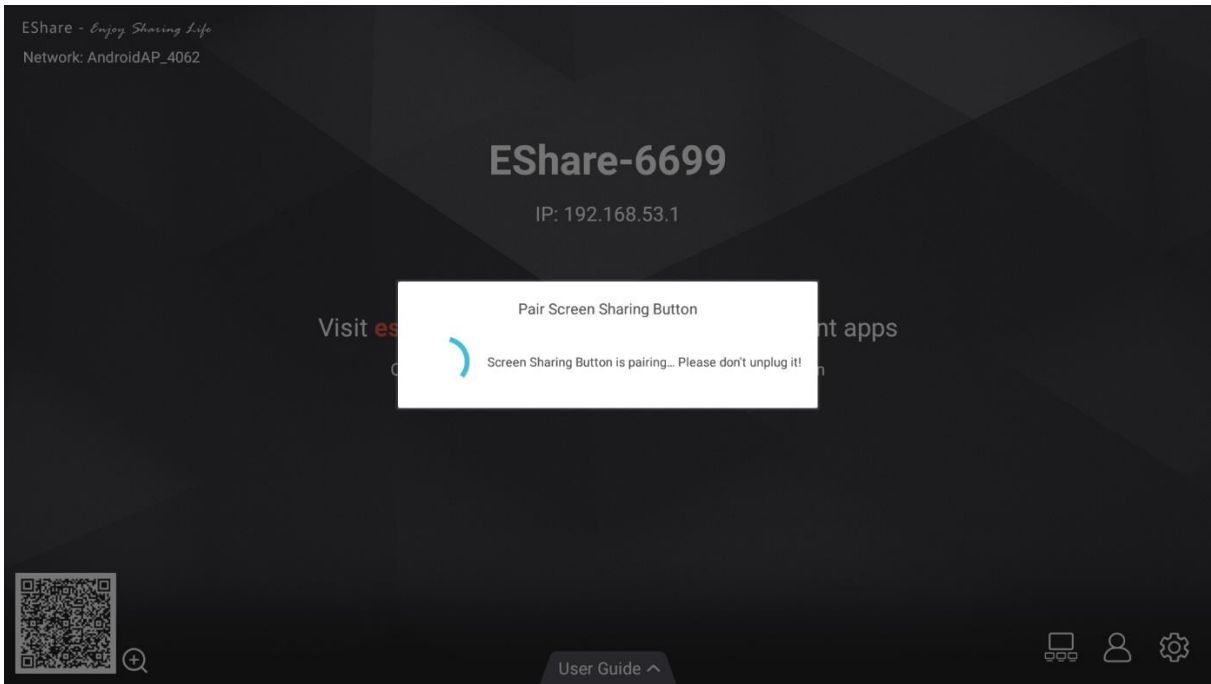


Figure 1 Auto Pair with Android Receiver

2. When the Button is successfully paired, the message “Saved!” will pop up, as shown in Figure 2.

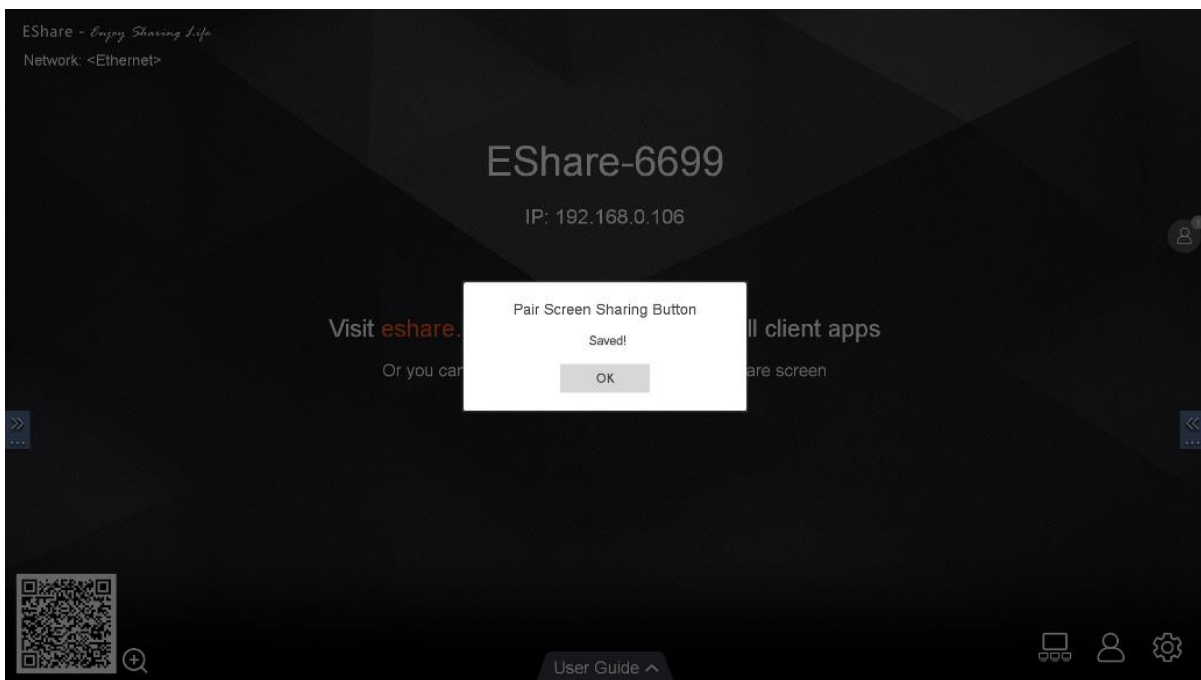


Figure 2 Auto Paired with Android Receiver

## 1.2 Manual Pair

- **Prerequisite:** LAN or WLAN is available for Android receiver.
- **Steps:**

1. Connect the Button to the USB port of Android receiver and enter the Wi-Fi SSID and password, as shown in Figure 3.

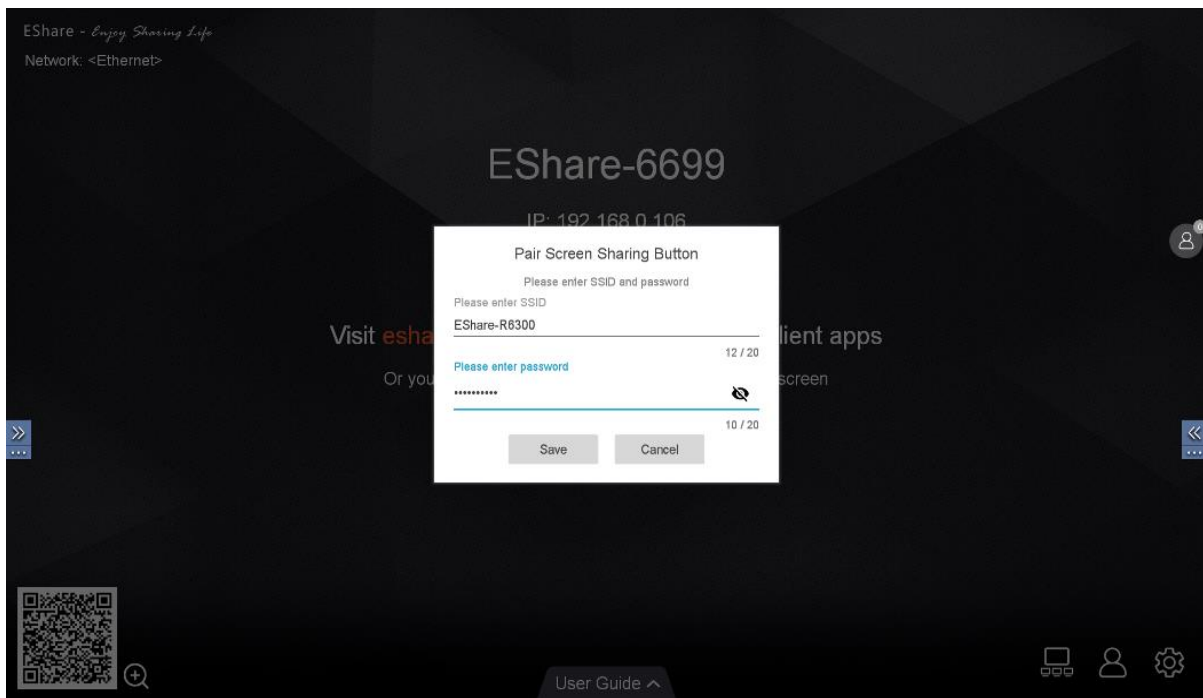


Figure 3 Manual Pair with Android Receiver

2. Then tap the “Save” button. When the Button is successfully paired, the message “Saved!” will pop up, as shown in Figure 4.

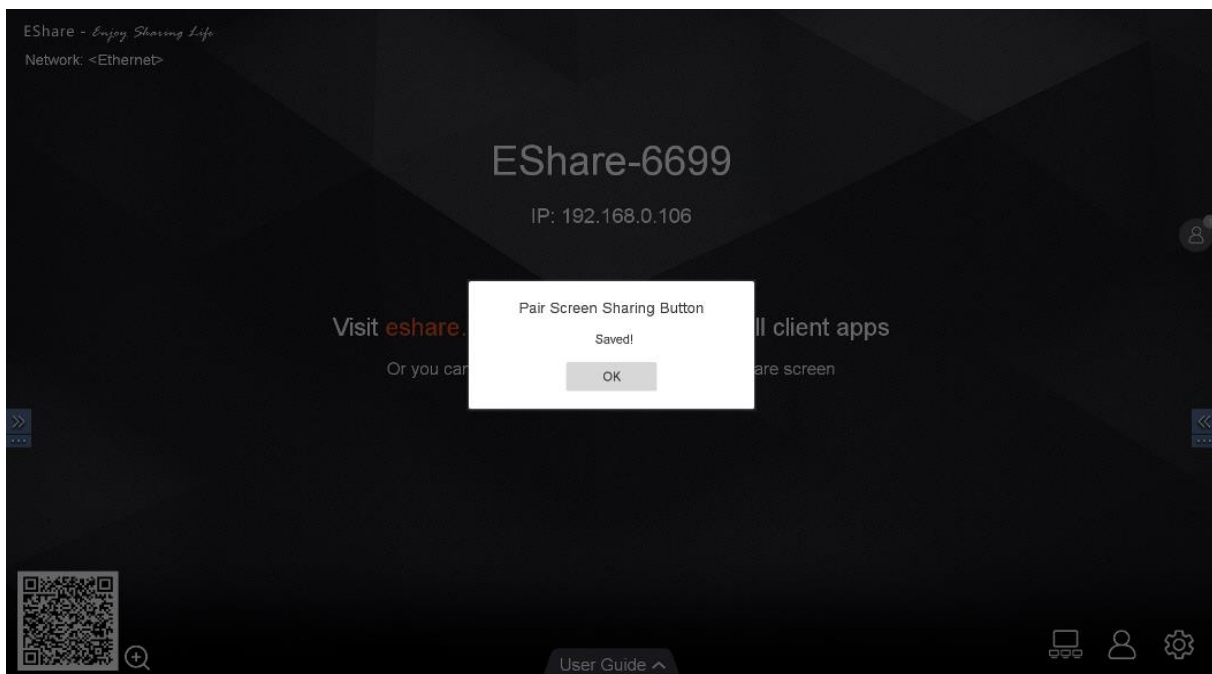


Figure 4 Manual Paired with Android Receiver

# LED Indicator in Pairing

## LED Indicators of USB Screen Sharing Button in Pairing

Please refer to the tables below for detailed indicator and status descriptions for the Button.

LED Indicator on the Button	Status Description
Slow flashing Blue	The receiver device is starting up.
Static Blue	The Button is paired and working normally.
Flashing Red	The Button fails to pair with the receiver device.

# Sharing

## Start/Stop Sharing

Plug the paired Button into your laptop, and wait for the indicator turns blue and continuously on. Tap the button to start screen sharing, and tap again to stop sharing.

## Extend Display

You can also set the display mode as extend display.

# LED Indicator in Sharing

## LED Indicators of USB Screen Sharing Button in Sharing

Please refer to the tables below for detailed indicator and status descriptions for the Button.

LED Indicator on the Button	Status Description
Flashing Blue	The Button is trying to connect to an device.
Static Blue	The Button is connected and working normally.
Flashing Red	The Button fails to pair with the receiver device.

# Other Information

## Specifications

<b>Compatibility</b>		USB Type-A
<b>Frame Rate</b>	Video	Up to 60 fps depending on environment (FHD)
<b>Audio</b>	Channel	Stereo
<b>Resolution</b>	Recommended and supported	1920 x 1080
<b>Power</b>	Voltage	5V
<b>Security</b>	Encryption	WPA2
<b>Cable</b>		USB Type-A
<b>Operating conditions</b>	Temperature Humidity Altitude	32 ° F to + 104° F (0° C to + 40° C) 20% to 90 % (no condensation) TO 10,000 feet
<b>Storage conditions</b>	Temperature Humidity Altitude	-4° F to + 140° F (-20° C to + 60 ° C) 10% to 90 % (no condensation) TO 30,000 feet
<b>Dimensions</b>	Physical	177.3 mm (W) x 65 mm (H) x 19.8 mm (D)
<b>Weight</b>	Physical	85 g
<b>Regulations</b>		CE

**Warning:** Do not set the graphics card in your computer to exceed these refresh rates.



This device complies with part 15 of the FCC Rules. Operation is subject to the following two conditions: (1) this device may not cause harmful interference, and (2) this device must accept any interference received, including interference that may cause undesired operation.

Any changes or modifications not expressly approved by the party responsible for compliance could void the user's authority to operate the equipment.

NOTE: This equipment has been tested and found to comply with the limits for a Class B digital device, pursuant to Part 15 of the FCC Rules. These limits are designed to provide reasonable protection against harmful interference in a residential installation. This equipment generates, uses and can radiate radio frequency energy and, if not installed and used in accordance with the instructions, may cause harmful interference to radio communications.

However, there is no guarantee that interference will not occur in a particular installation.

If this equipment does cause harmful interference to radio or television reception, which can be determined by turning the equipment off and on, the user is encouraged to try to correct the interference by one or more of the following measures:

- Reorient or relocate the receiving antenna.
- Increase the separation between the equipment and receiver.
- Connect the equipment into an outlet on a circuit different from that to which the receiver is connected.
- Consult the dealer or an experienced radio/TV technician for help.

The device has been evaluated to meet general RF exposure requirement. The device can be used in portable exposure condition without restriction