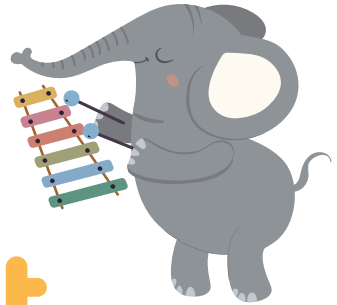




Light-up Dance Mat

With wireless technology



CONTENTS

EN	-----	01
EN	-----	01
EN	-----	01
EN	-----	01
EN	-----	01

⚠ WARNING:

1. Adults take out toys from package and complete installation.
2. To be used under the direct supervision of an adult.
3. Do not near fire.
4. Please keep it away from oil and dust as much as possible.
5. Non-rechargeable batteries are not to be recharged.
6. Different types of batteries or new and used batteries are not to be mixed.
7. Exhausted batteries are to be removed from the toy.
8. The supply terminals are not to be short-circuited.
9. Batteries are to be inserted with the correct polarity (+ and -).



**Animal-themed
Light Up Dance Mat**

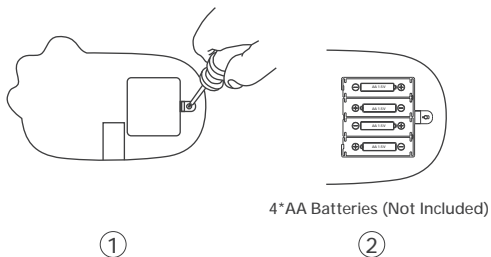


**Arcade Style
Light Up Dance Mat**

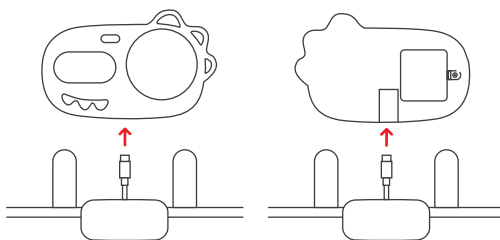
Tip: Please refer to the packaging for further details of the parts list.

PREPARATION

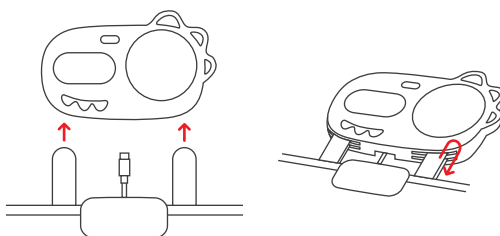
1. Open the battery compartment cover with a Phillips-head screwdriver and install 4 AA batteries (Batteries not included). Ensure the batteries are installed correctly with regard to polarity (+ and -).



2. Connect the dance mat with the music player via the USB-C cable.



3. Push the velcro strips through the holes located at the bottom of the music player to fasten the music player into place.



GAME MODES

Work out in the most entertaining way! Step, hop and jump onto the blinking arrows in this appealing dance game! Follow the beat of its built-in songs, or select your own favorite song via the wireless connection. Choose the mode that fits your mood and start dancing.

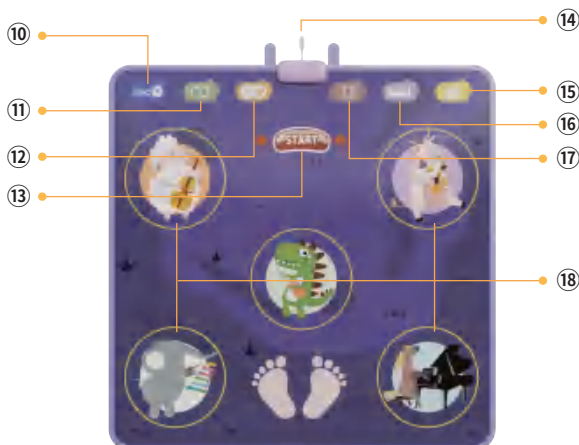
Animal-themed Light Up Dance Mat

PRODUCT DESCRIPTION

Portable Music Player



Light-up Dance Mat



① OFF/ON

② LED Scoreboard

③ Skip Previous

④ Start/Pause

⑤ Skip Next

⑥ VOL+/VOL-

⑦ Internal/Wireless External
Music Selection

⑧ Speaker

⑨ USB Type-C Port

⑩ DEMO Dance Mode

⑪ Looping Dance Mode

⑫ Animal/Instrument Sound Mode

⑬ Start/Pause

⑭ Receiver

⑮ Difficulty Level Selection

⑯ Piano Keyboard Mode

⑰ Wireless Free Dance Mode

⑱ Light-up Foot Panel

GAME MODES

DEMO Dance Mode:

1. Press the DEMO Dance Mode button ⑪ to select the desired music.
2. Press Start to begin gameplay.

Looping Dance Mode:

1. Press the Looping Dance Mode button ⑫ to select the desired music.
2. Press Start to begin gameplay and let it on a loop.

DEMO Dance Mode & Looping Dance Mode Song Difficulty Level Chart

Song Difficulty Level	1-Beginner Level	2-Intermediate Level	3-Advanced Level
Song Serial Number	1-3	4-6	7-10

Animal/Instrument Sound Mode:

1. Press the Animal/Instrument Sound Mode button ⑬ to choose animal sound or Instrument sound in this mode.
2. Press the Difficulty Level Selection button ⑰ to select game difficulty, then press Start.
3. The foot pads will light up when players jump upon the right pad.
4. The game is over after 5 "outs".

Free Dance Mode:

1. Press the Free Dance Mode button ⑭ and the data of the digital panel will start blinking.
2. On the Bluetooth interface of your mobile device (or other Bluetooth enabled device), select "Joyjoz001" and select to pair.
3. Enjoy free dance play without any rules. The foot pads will light up when players jump upon the foot pad.

Piano Keyboard Mode:

1. Press the Piano Keyboard Mode button ⑮.
2. Five keys stand for Do, Rei, Mi, Fa, and So respectively.
 - Sheep - Do
 - Cattle - Rei
 - Dinosaur - Mi
 - Elephant - Fa
 - Horse - So

Game Difficulty Selection:

1. There are 3 difficulty levels in total and the default setting is difficulty level 1.
2. You can select difficulty levels in DEMO Dance Mode, Looping Dance Mode, and Animal/Instrument Sound Mode.
3. Press the Difficulty Level Selection button ⑰ to select game difficulty, then press Start.

C

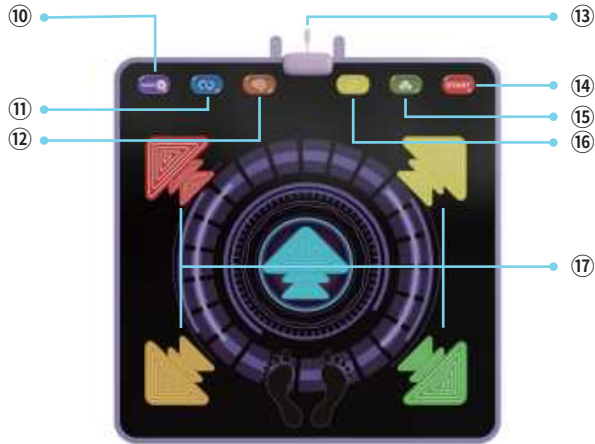
Arcade Style Light Up Dance Mat

PRODUCT DESCRIPTION

Portable Music Player



Light-up Dance Mat



- | | | |
|------------------|--|------------------------------|
| ① OFF/ON | ⑦ Internal/Wireless External Music Selection | ⑫ Memory Game Mode |
| ② LED Scoreboard | ⑧ Speaker | ⑬ Free Dance Mode |
| ③ Skip Previous | ⑨ USB Type-C Port | ⑭ Receiver |
| ④ Start/Pause | ⑩ DEMO Dance Mode | ⑮ Difficulty Level Selection |
| ⑤ Skip Next | ⑪ Looping Dance Mode | ⑯ Start/Pause |
| ⑥ VOL+/VOL- | | ⑰ Light-up Arrow |

GAME MODES

DEMO Dance Mode:

1. Press the DEMO Dance Mode button ⑩ to select the desired music.
2. Press Start to begin gameplay.

Looping Dance Mode:

1. Press the Looping Dance Mode button ⑫ to select the desired music.
2. Press Start to begin gameplay and let it on a loop.

DEMO Dance Mode & Looping Dance Mode Song Difficulty Level Chart

Song Difficulty Level	1-Beginner Level	2-Intermediate Level	3-Advanced Level
Song Serial Number	1-3	4-6	7-10

Memory Game Mode::

1. Press the Memory Game Mode button ⑬.
2. Press the Difficulty Level Selection button ⑯ to select game difficulty, then press Start.
3. There are 10 levels for each game difficulty. Start with one light and it will increase one by one after each correct response.
4. Players are required to memorize the series of light patterns and reproduce it correctly within 15 seconds.
5. If you step upon the wrong light panel, please continue to reproduce right light patterns. The game is over after 4 "outs".

Free Dance Mode:

1. Press the Free Dance Mode button ⑭ and the data of the digital panel will start blinking.
2. On the Bluetooth interface of your mobile device (or other Bluetooth enabled device), select "Joyjoz001" and select to pair.
3. Enjoy free dance play without any rules. The foot pads will light up when players jump upon the foot pad.

Game Difficulty Selection:


1. Players can select difficulty levels in DEMO Dance Mode, Looping Dance Mode, and Memory Game Mode.
2. There are 3 difficulty levels in total and the default setting is difficulty level 1.
3. Press the Difficulty Level Selection button ⑯ to select game difficulty, then press Start.

Detachable & Portable Music Player



The music player is removable and has 20 built-in songs, or connect a Bluetooth enabled device to select your favorite song. 10 built-in songs are available after connecting the music player with the dance mat.

How to connect Bluetooth enabled device:

1. Press Internal/Wireless External Music Selection button , and the data of the digital panel will start blinking.
2. On the Bluetooth interface of your mobile device (or other wireless connection(Bluetooth) enabled device), select “Joyjoz001” and select to pair.

FCC Compliance

Any Changes or modifications not expressly approved by the party responsible for compliance could void the user’s authority to operate the equipment.

This device complies with part 15 of the FCC Rules. Operation is subject to the following two conditions: (1) This device may not cause harmful interference, and (2) this device must accept any interference received, including interference that may cause undesired operation.

Note:

This equipment has been tested and found to comply with the limits for a Class B digital device, pursuant to part 15 of the FCC Rules. These limits are designed to provide reasonable protection against harmful interference in a residential installation. This equipment generates uses and can radiate radio frequency energy and, if not installed and used in accordance with the instructions, may cause harmful interference to radio communications. However, there is no guarantee that interference will not occur in a particular installation. If this equipment does cause harmful interference to radio or television reception, which can be determined by turning the equipment off and on, the user is encouraged to try to correct the interference by one or more of the following measures:

- Reorient or relocate the receiving antenna.
- Increase the separation between the equipment and receiver.
- Connect the equipment into an outlet on a circuit different from that to which the receiver is connected.
- Consult the dealer or an experienced radio/TV technician for help.

This equipment complies with FCC radiation exposure limits set forth for an uncontrolled environment. This transmitter must not be co-located or operating in conjunction with any other antenna or transmitter.

Correct Disposal of This Product

“”The symbol indicates DC voltage

“”RECYCLING

This product bears the selective sorting symbol for Waste electrical and electronic equipment (WEEE). This means that this product must be handled pursuant to European directive 2012/19/EU in order to be recycled or dismantled to minimize its impact on the environment. User has the choice to give his product to a competent recycling organization or to the retailer when he buys a new electrical or electronic equipment.

Declaration of Conformity

EU Compliance Statement: Hong Kong Lute Technology Co., Limited. hereby declares that this device is in compliance with the essential requirements and other relevant provisions of the Directive 2014/53/EU.