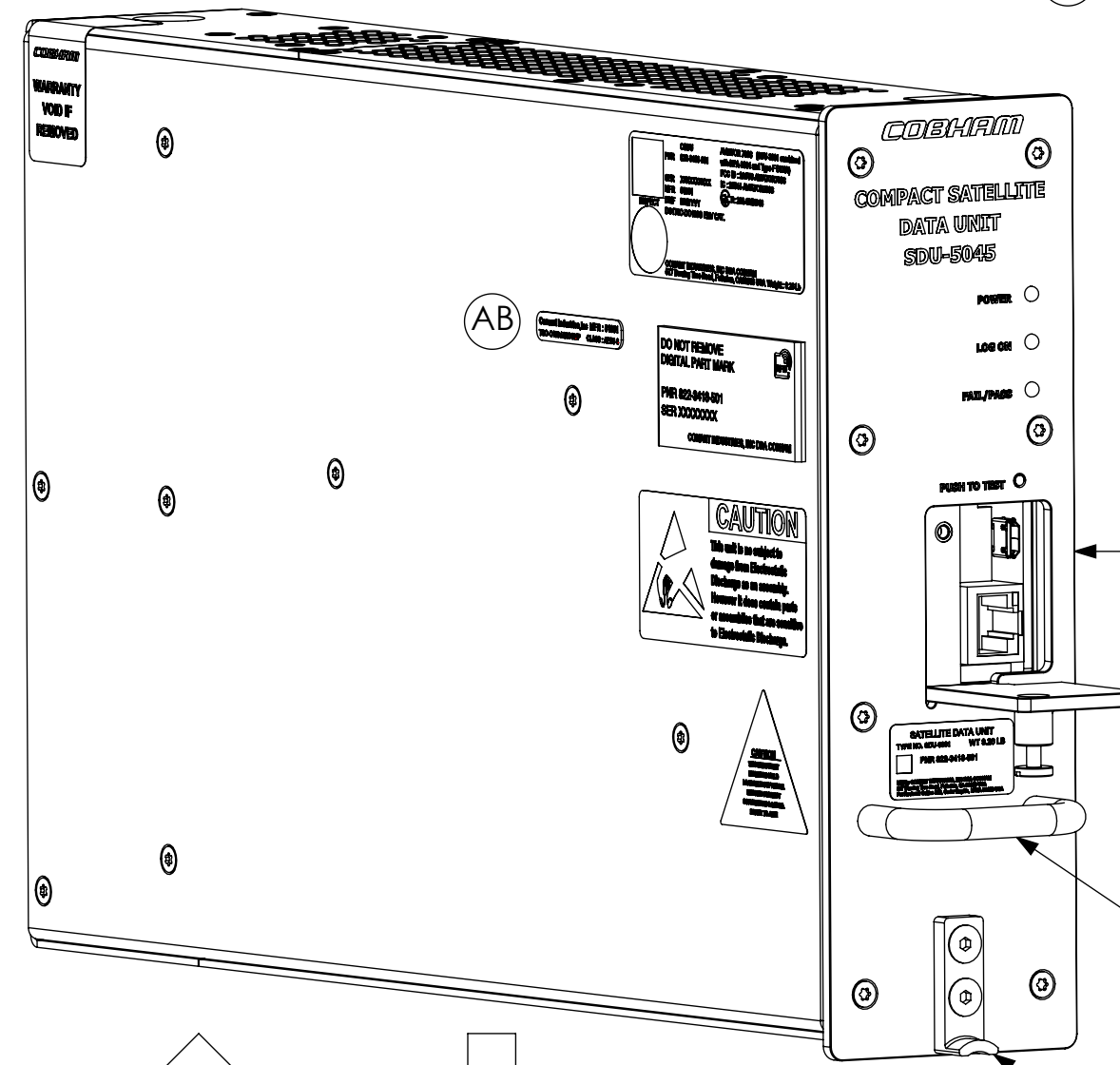
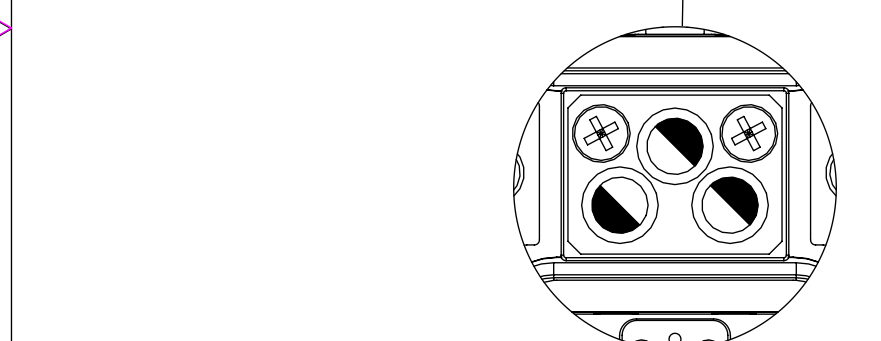
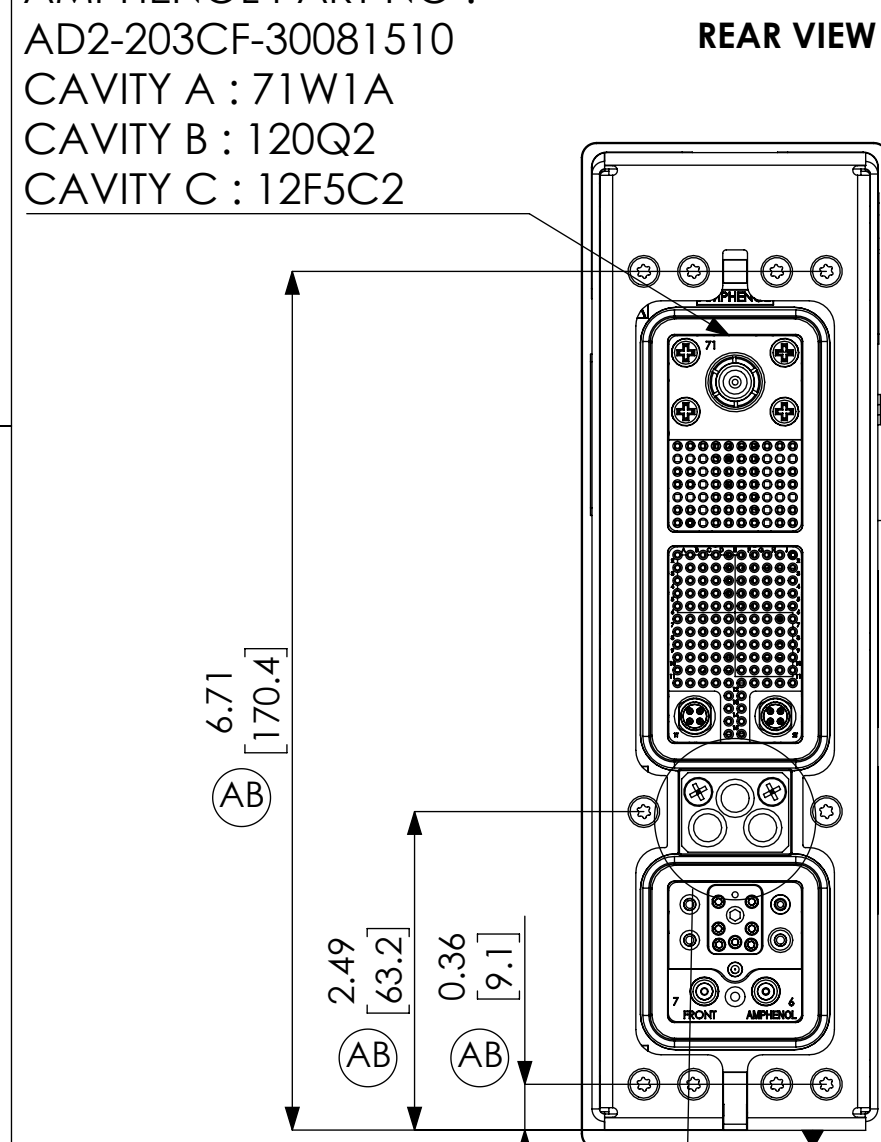
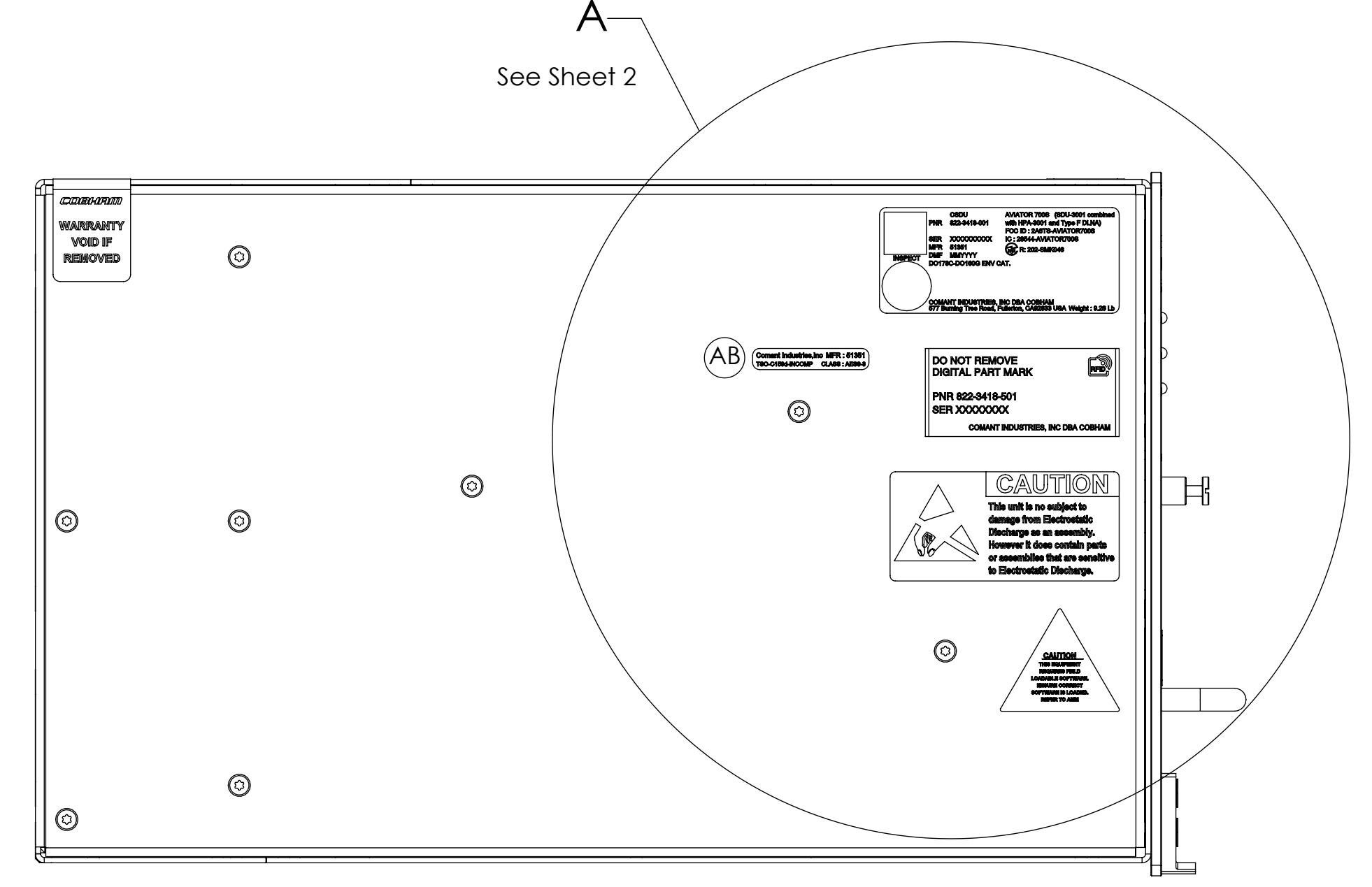
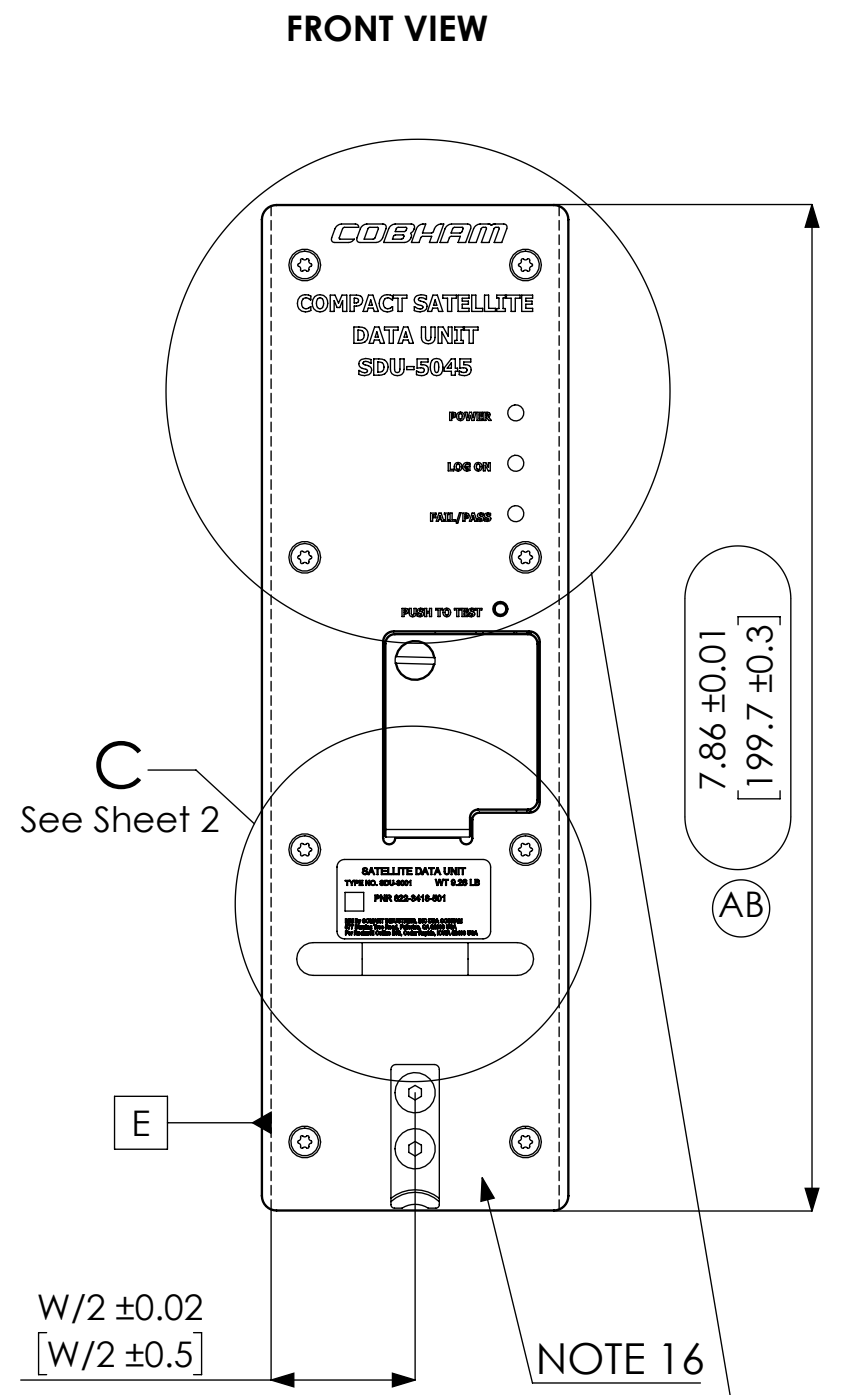
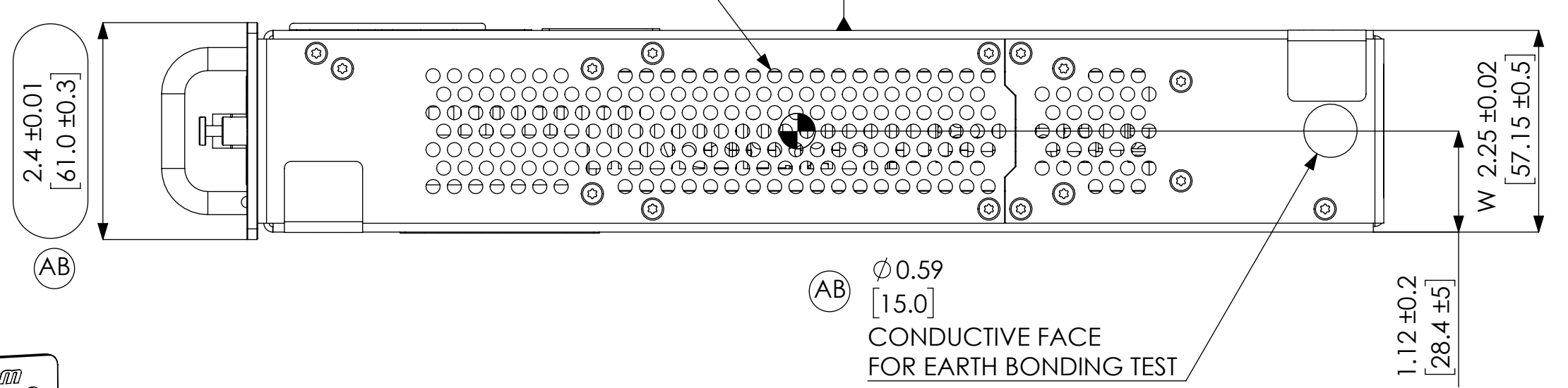
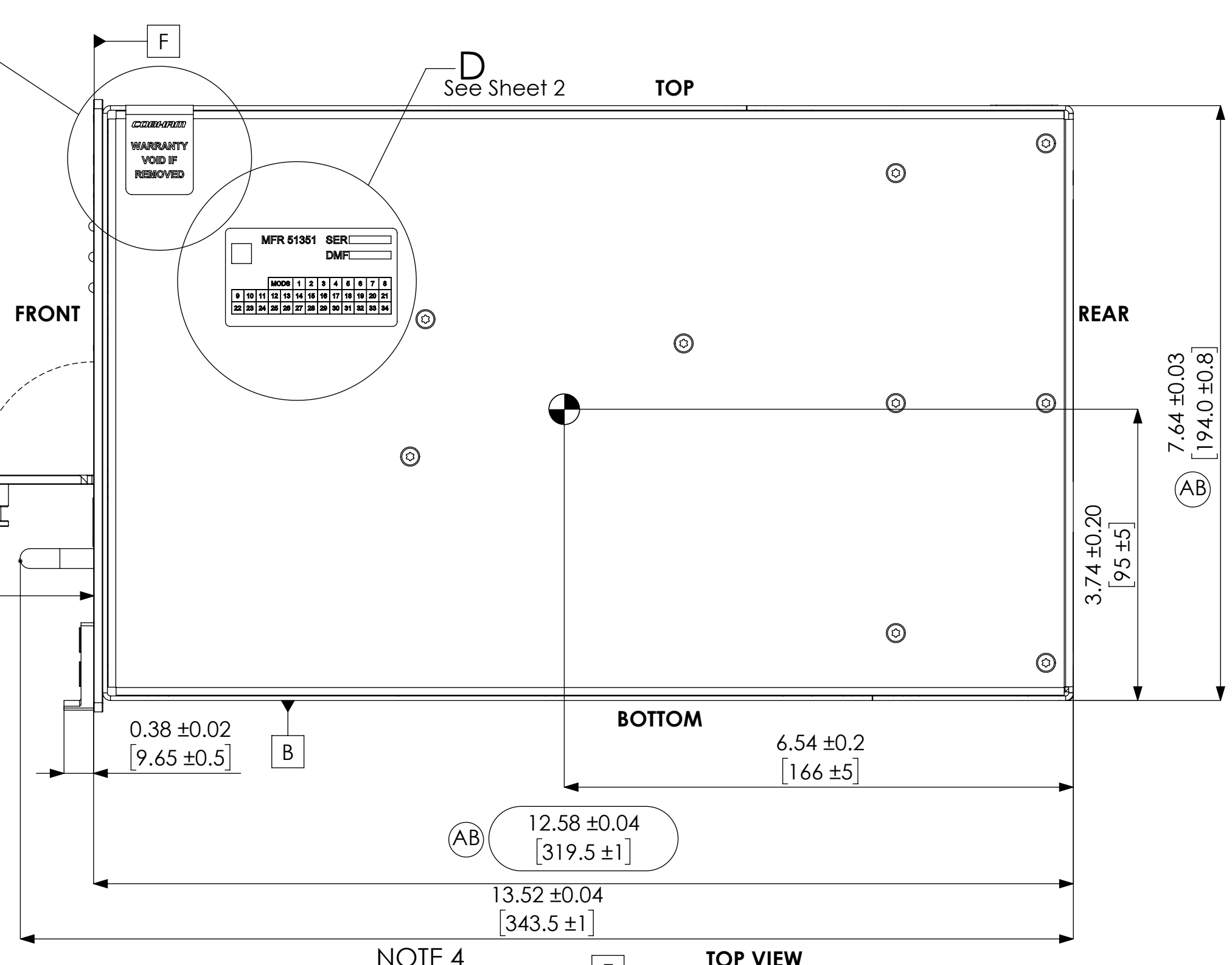
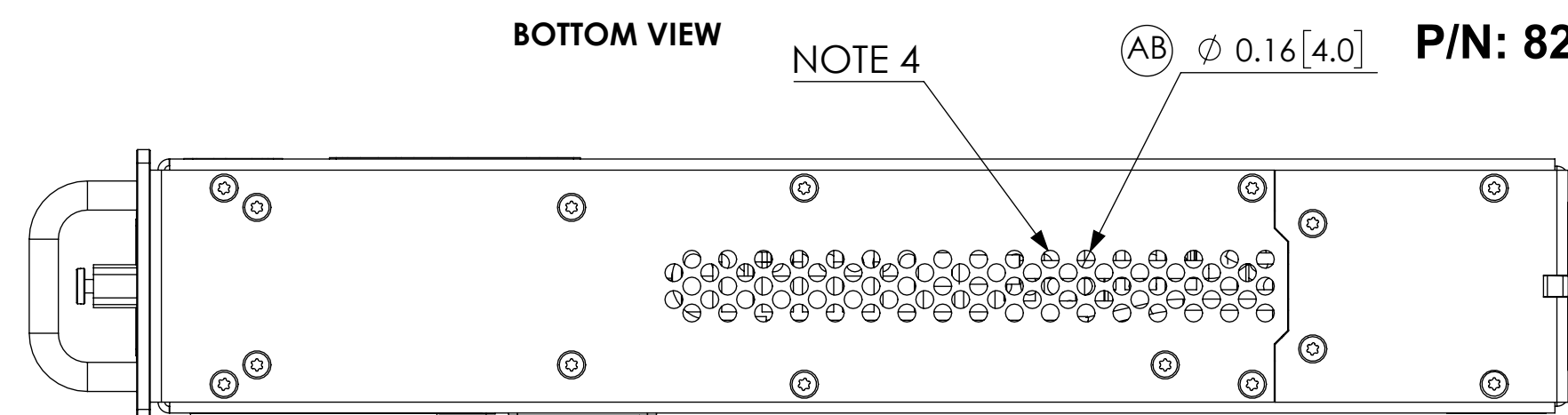


ARINC 600 CONNECTOR
NON ENVIRONMENTAL
AMPHENOL PART NO :
AJ2-203CF-40081577
CAVITY A : 71W1A
CAVITY B : 120Q2
CAVITY C : 12F5C2

CONNECTING PART
NON ENVIRONMENTAL
AMPHENOL PART NO :
AD2-203CF-30081510
CAVITY A : 71W1A
CAVITY B : 120Q2
CAVITY C : 12F5C2

REVISIONS					
REV	DESCRIPTION	DATE	DRAWN	CHECKED	APPROVED
AA	SDU Outline Drawing	09/08/22	A. Caron	A. Bond	D. Holloway
AB	Revised by ECN 22-170	29/11/22	I. Demirel		

P/N: 822-3418-501



- MAINTENANCE CONNECTOR
- 10/100 BASE-T ETHERNET CONNECTOR
- CONNECTING PART : 10/100 BASE-T ETHERNET CONNECTOR RJ45 MALE
- MICRO USB 2.0 TYPE B CONNECTOR
- CONNECTING PART MICRO USB 2.0 TYPE B PLUG
- MAINTENANCE CONNECTOR COVER
- ARINC PULL HANDLE OMNIPLESS PART NO. 500-A0521
- FRONT HOOK NAS622-CT3

- NOTES:**
- UNIT MASS 4.2 KG (9.26 LB). GUARANTEED MAX MASS 4.4 KG (9.7 LB).
 - INDICATES APPROXIMATE CENTER OF GRAVITY (COG).
 - DARK PORTION INDICATES SOLID PART OF POLARISING KEYWAYS (INDEX CODE 81). DO NOT BLOCK COOLING AIR HOLES.
 - AIRFLOW RATE IN BLOW-THROUGH COOLING MODE 26 KG/HR @ 40°C (13.7 CUBIC FEET PER MINUTE). AIRFLOW RATE IN DRAW-THROUGH COOLING MODE 20.3 KG/HR @ 40°C.
 - PRESSURE DROP 26 ± 2 PA @ 13.7 CUBIC FEET PER MINUTE / 40°C (0.104" OF WATER). PRESSURE DROP IS 5 ± 3 MM OF WATER @ THE STANDARD AIRFLOW RATE.
 - ALL EXTERNAL DIMENSIONS CONFORM TO ARINC 600-19 SPECIFICATIONS FOR LRU CASE SIZE 2.
 - INSTALLATION CLEARANCE : AS PER ARINC 600.
 - NOMINAL POWER INPUT 93W (0.80 A @ 115 VAC). POWER FACTOR 0.98. MAXIMUM POWER DISSIPATION : 40W.
 - NO INTERNAL FAN.
 - NO FILTRATION OF AIR REQUIRED.
 - ENVIRONMENTAL CHARACTERISTICS OF THE CSDU ARE SUMMARIZED IN THE QTS/QTR DOCUMENTS 99-165878.
 - SDU-3001 IS CUSTOMER TYPE NUMBER AND SDU-5045 IS MANUFACTURER TYPE NUMBER
 - ALL DIMENSIONS NOT BALLOONED ARE REFERENCE ONLY.

- MATERIAL AND FINISH:**
- MATERIAL : SIDE COVERS, BACK PLANE, FRONT COVER : ALUMINIUM ALLOY 5052 H32 AS PER EN 485 (EN AW-5052). FRONT FACE : ALUMINIUM ALLOY 6082 T6 AS PER EN 485 (EN AW-6082).
 - FINISH : CHEMICAL CONVERSION TO MIL-DTL-5541F TYPE II CLASS 3.
 - PAINT : PPG AEROSPACE COATING. PRIMER : DESOPRIME @ CF/CA7502E. TOPCOAT : DESOTHANE @ CA8311 HS POLYURETHANE BLACK MATT.
 - FRONT FACE BLACK ANODIZED ALUMINIUM.

REV	DESCRIPTION	DATE	DRAWN	CHECKED	ENG APPR.	Q.A.	MATERIAL	FINISH
			I. Demirel	11/29/22			SEE NOTE 13	SEE NOTE 14

THESE COMMODITIES, TECHNOLOGY OR SOFTWARE ARE CONTROLLED BY REGULATIONS OF THE UNITED STATES EXPORT ADMINISTRATIVE REGULATIONS. DIVERSION CONTRARY TO U.S. LAW IS PROHIBITED.

UNLESS OTHERWISE SPECIFIED:
DIMENSIONS ARE IN INCHES [MM]
TOLERANCES:
ANGLES ±0.5°

INCHES	mm
.XX ±0.02	.X ±0.5
.XXX ±0.008	.XX ±0.2
.XXXX ±0.004	.XXX ±0.1

DO NOT SCALE DRAWING

TYPED SIGNATURES INDICATE APPROVAL. HANDWRITTEN SIGNATURE APPROVAL OF THIS DOCUMENT IS ON FILE AT COMANT INDUSTRIES, INC., FULLERTON, CALIFORNIA.

TITLE	SIZE	CAGE CODE	DWG NO.	REV
OUTLINE DRAWING, SDU-5045, Compact Satellite Data Unit	D	51351	154-200004	AB

SCALE: 1:1.5 WEIGHT: 9.26 Lbs SHEET: 1 OF 2

DIMENSIONS ARE MILLIMETERS.
DIMENSIONS IN BRACKETS ARE INCHES.

