

Equipment drawings

3.1 Introduction

The following pages show copies of outline drawings of important system units relevant for an installation.

Important

The drawings in this manual are for reference only. If you have access to the partner platform Cobham SYNC, you can get copies of the outline drawings at: <https://sync.cobham.com/satcom/support/downloads>. You can download the drawings as PDF files. There are also 3D models of selected units.

Note

For equipment drawings of the AVIATOR Wireless Handset and Cradle see *AVIATOR Wireless Handset and Cradle Installation & Maintenance Manual (98-129600)*.

3.2.1 TT-5040A-001/TT-5040A-8xy CM (inserted in the SBU)

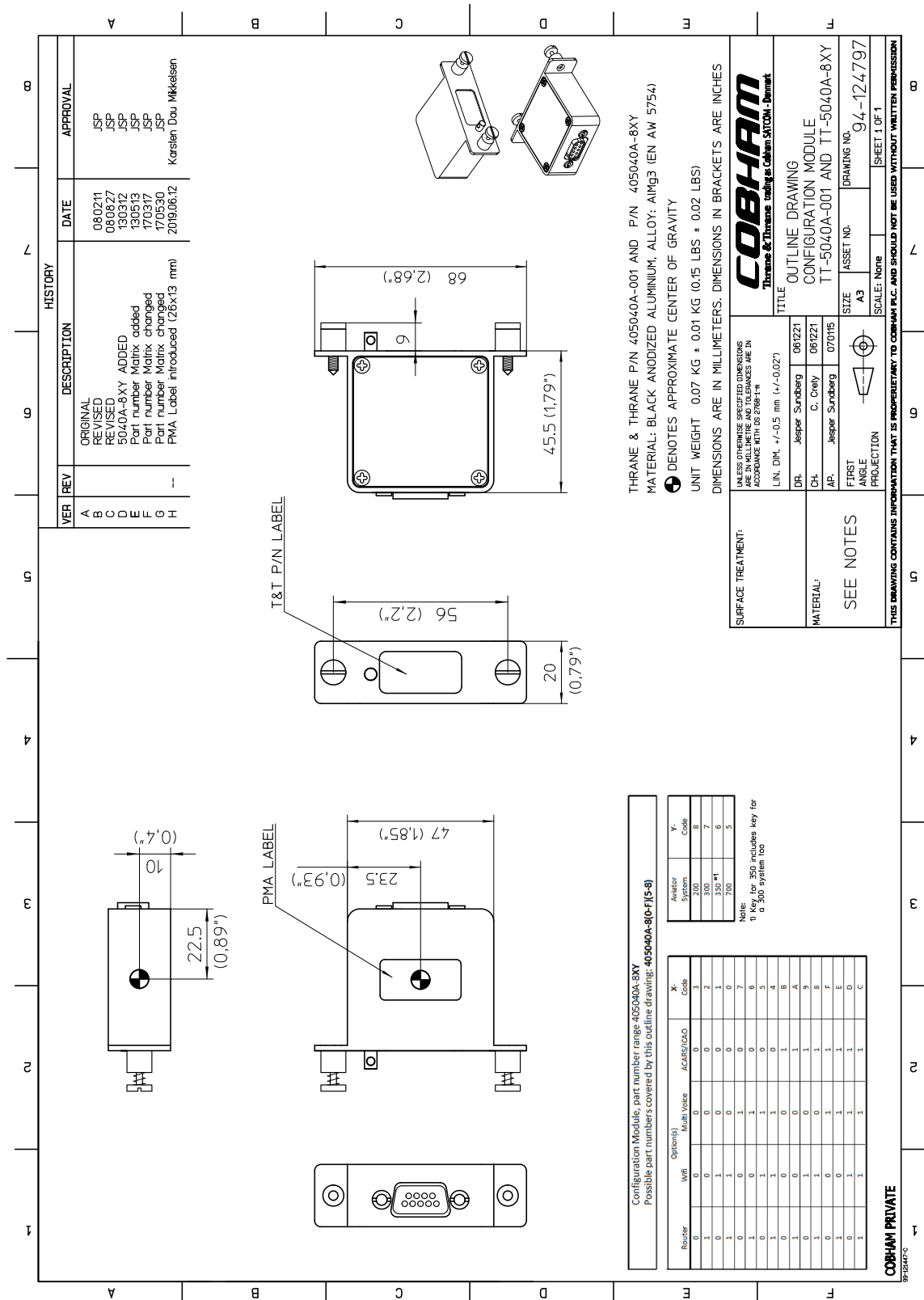


Figure 3-2: Outline drawing: TT-5040A-001/TT-5040A-8xy CM, inserted in the SBU

3.3 TT-5038A-003 Rx Power Splitter



If the Rx Power Splitter is to be mounted on a flat surface, mount it on a 3 mm mounting plate to provide enough space for mounting of the connectors.

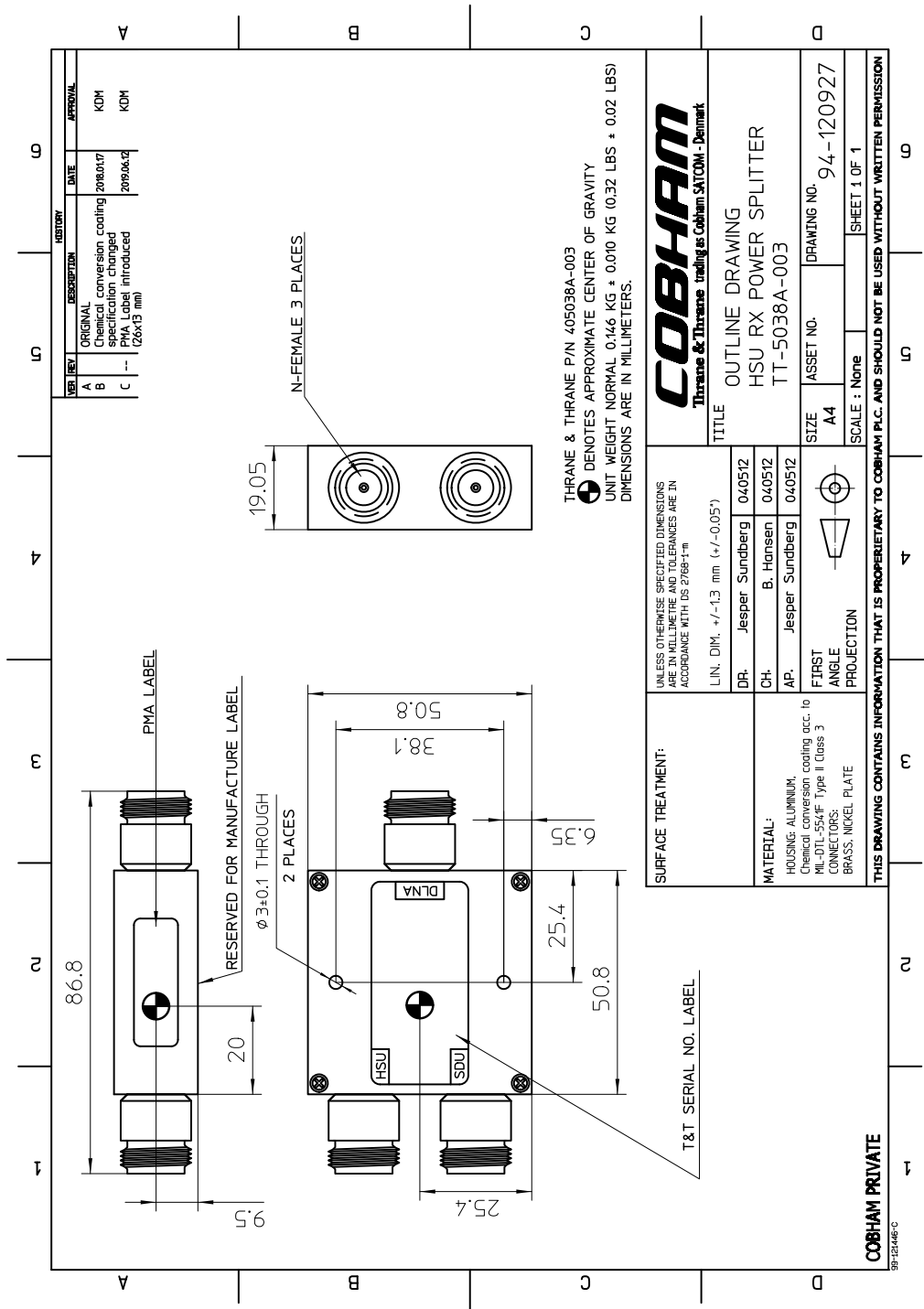


Figure 3-3: Outline Drawing: Rx Power Splitter

3.4 TT-5016A HLD

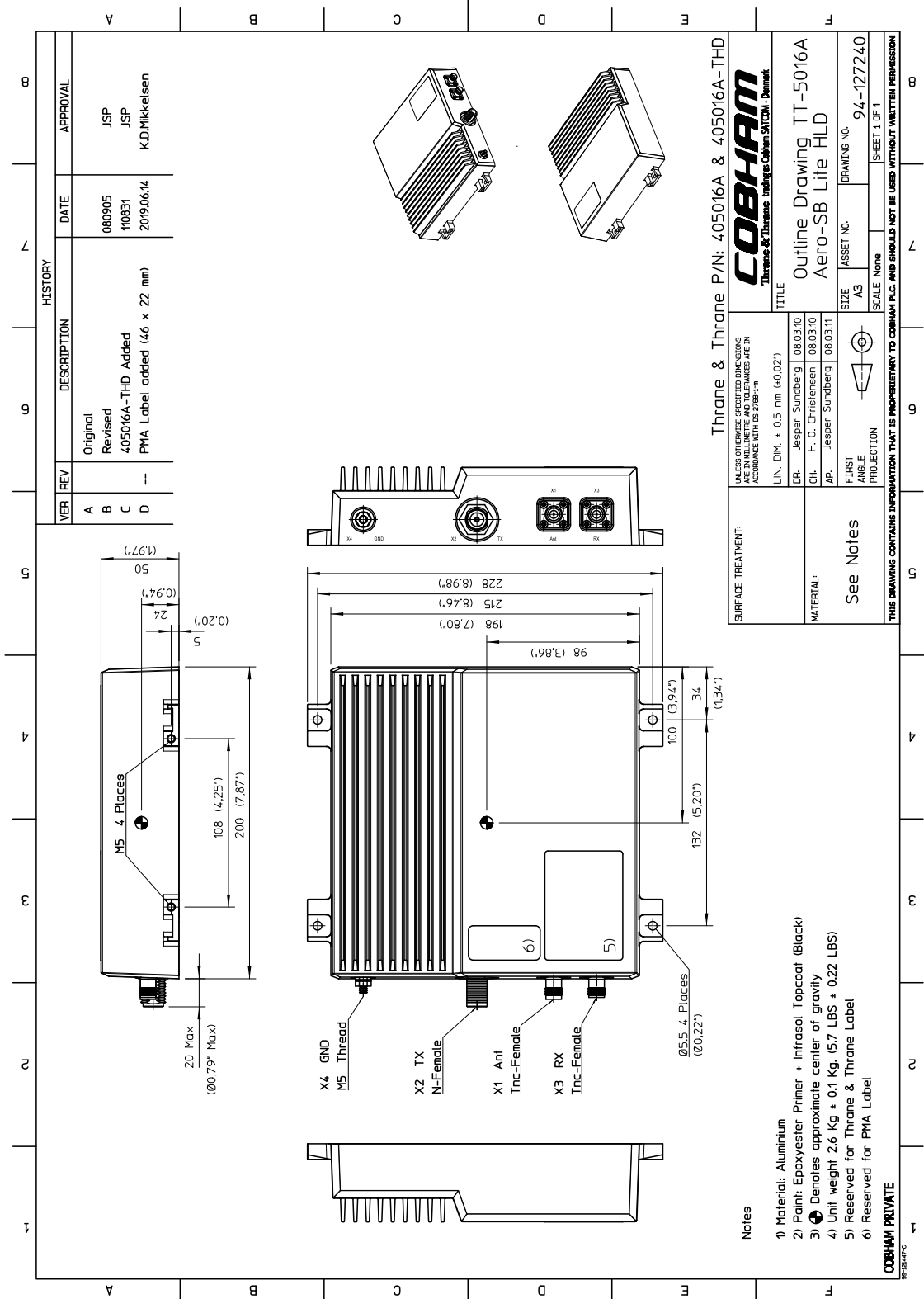


Figure 3-4: Outline drawing: TT-5016A HLD

3.5 LGA-3002

Original Manufacturer Sensor Systems P/N: S65-8282-101 (listed on FAA 8130-3).

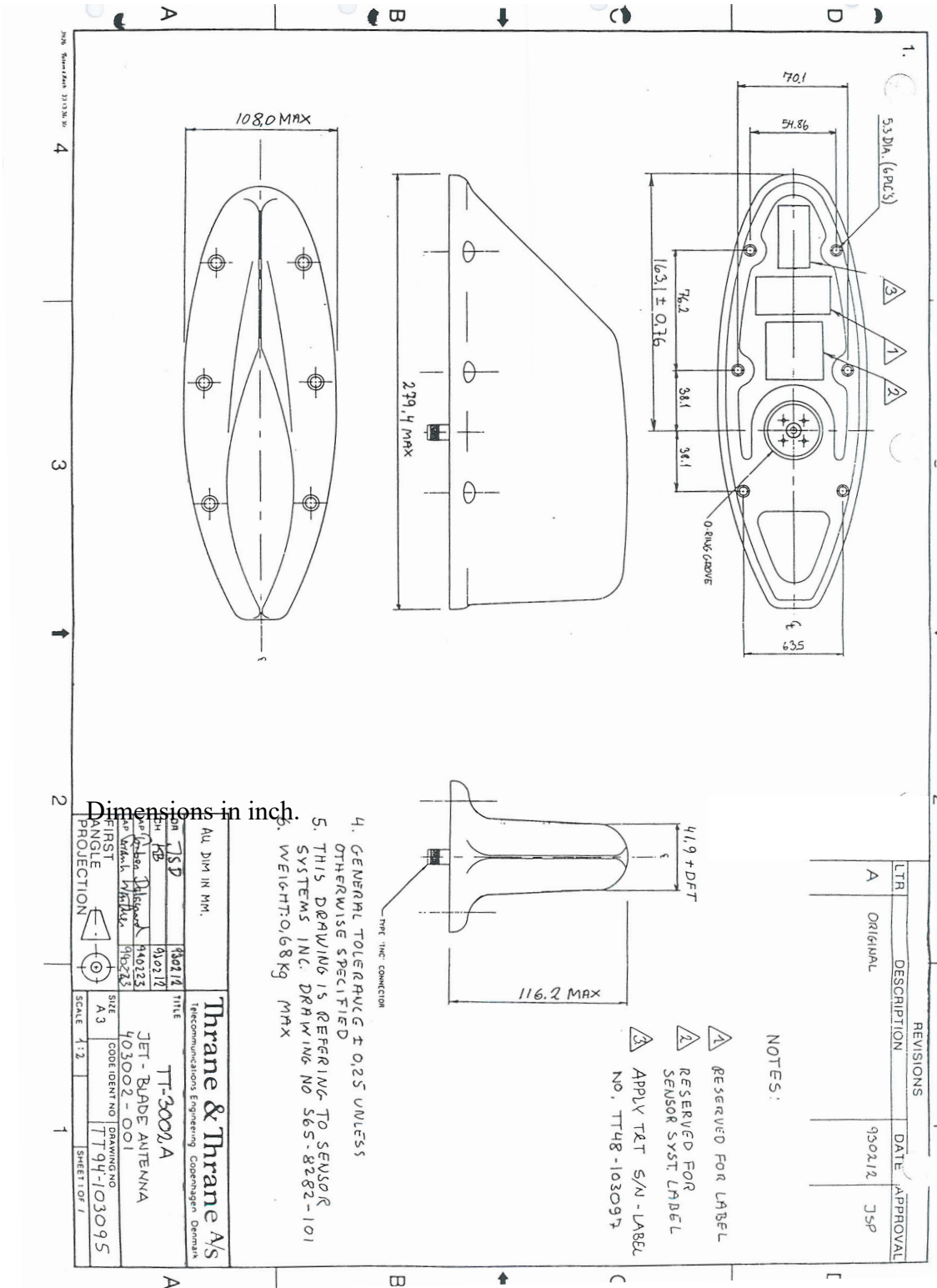


Figure 3-5: Outline drawing: LGA-3002

For newest revision check at <http://www.sensorantennas.com>.

3.8 TT-5621B 2-Wire Handset

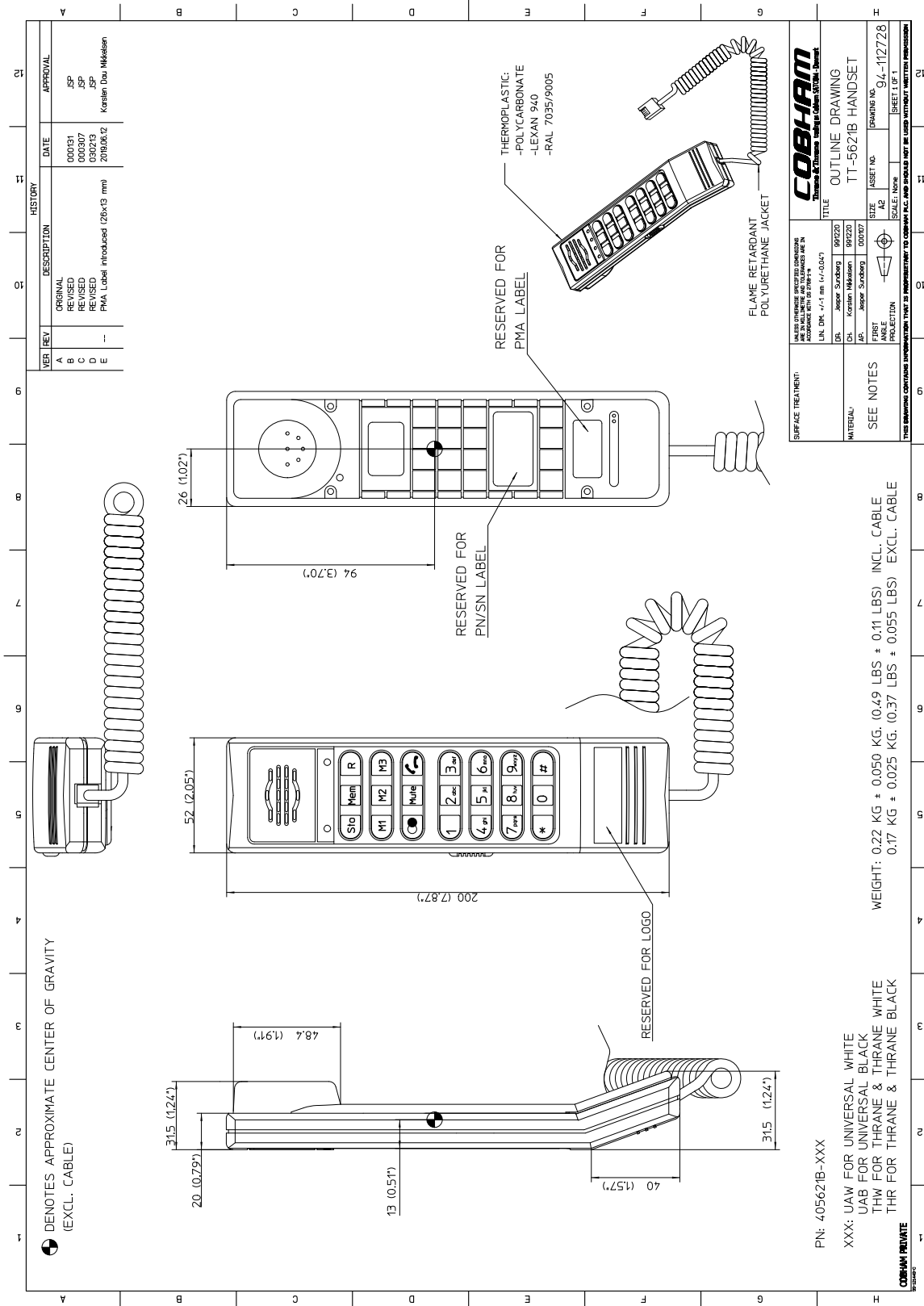


Figure 3-9: Outline drawing: TT-5621B 2-Wire Handset

3.10 SBU trays

Note The comment OBSOLETE refers to the -102 assembly.

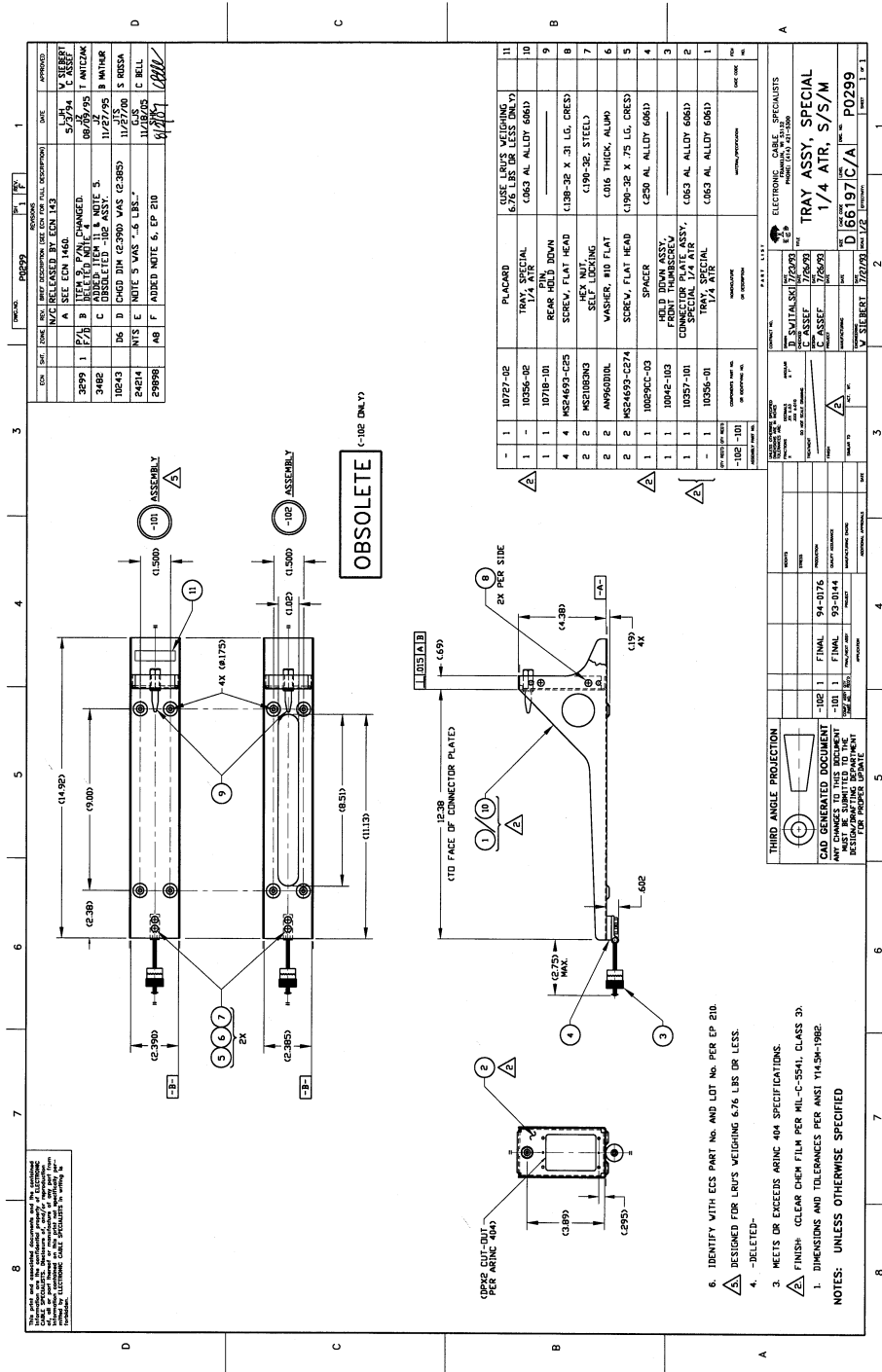


Figure 3-11: Outline drawing: SBU tray: ECS PO299-101

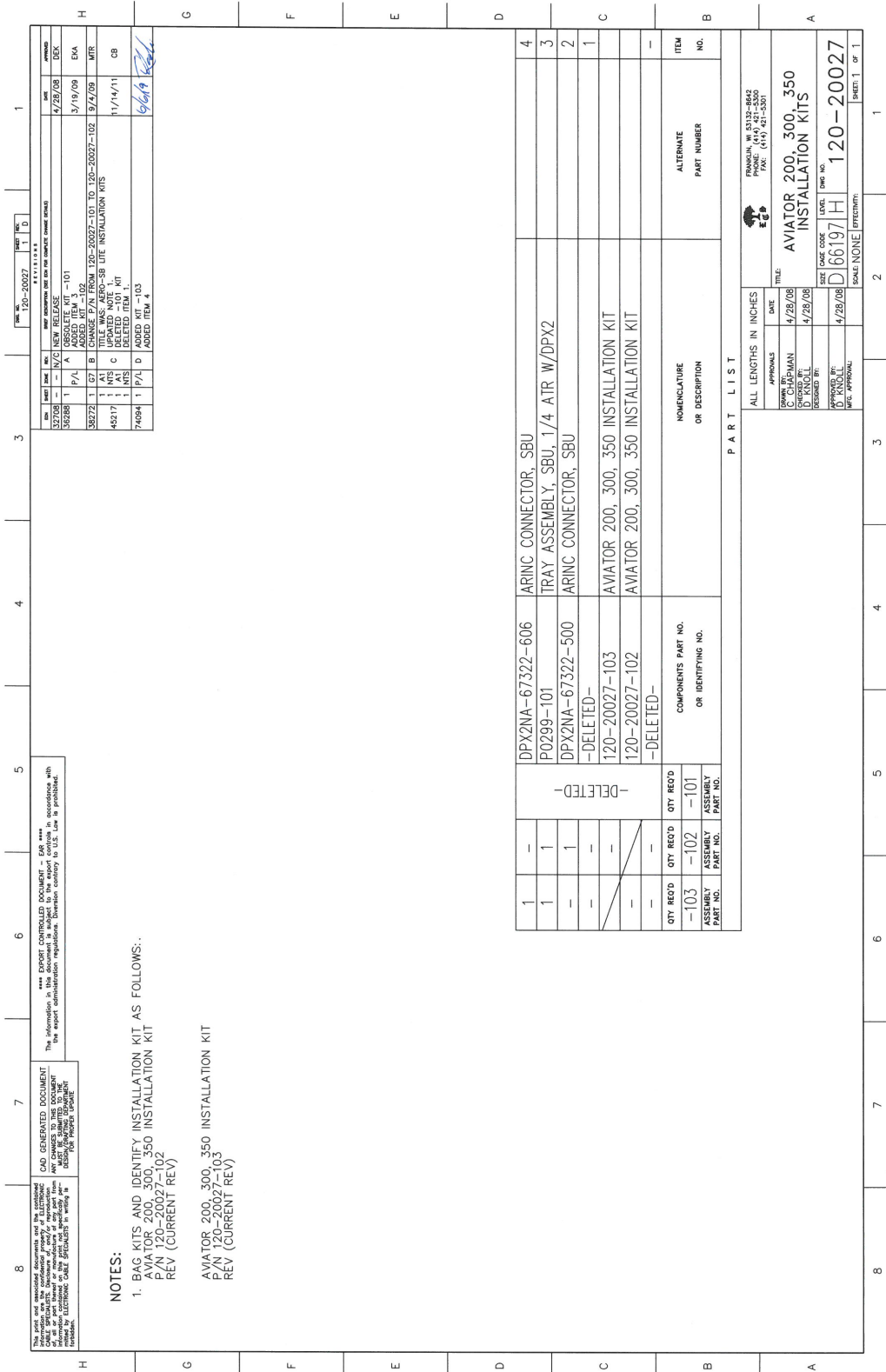


Figure 3-12: ECS AVIATOR 200, 300, 350 Installation Kits

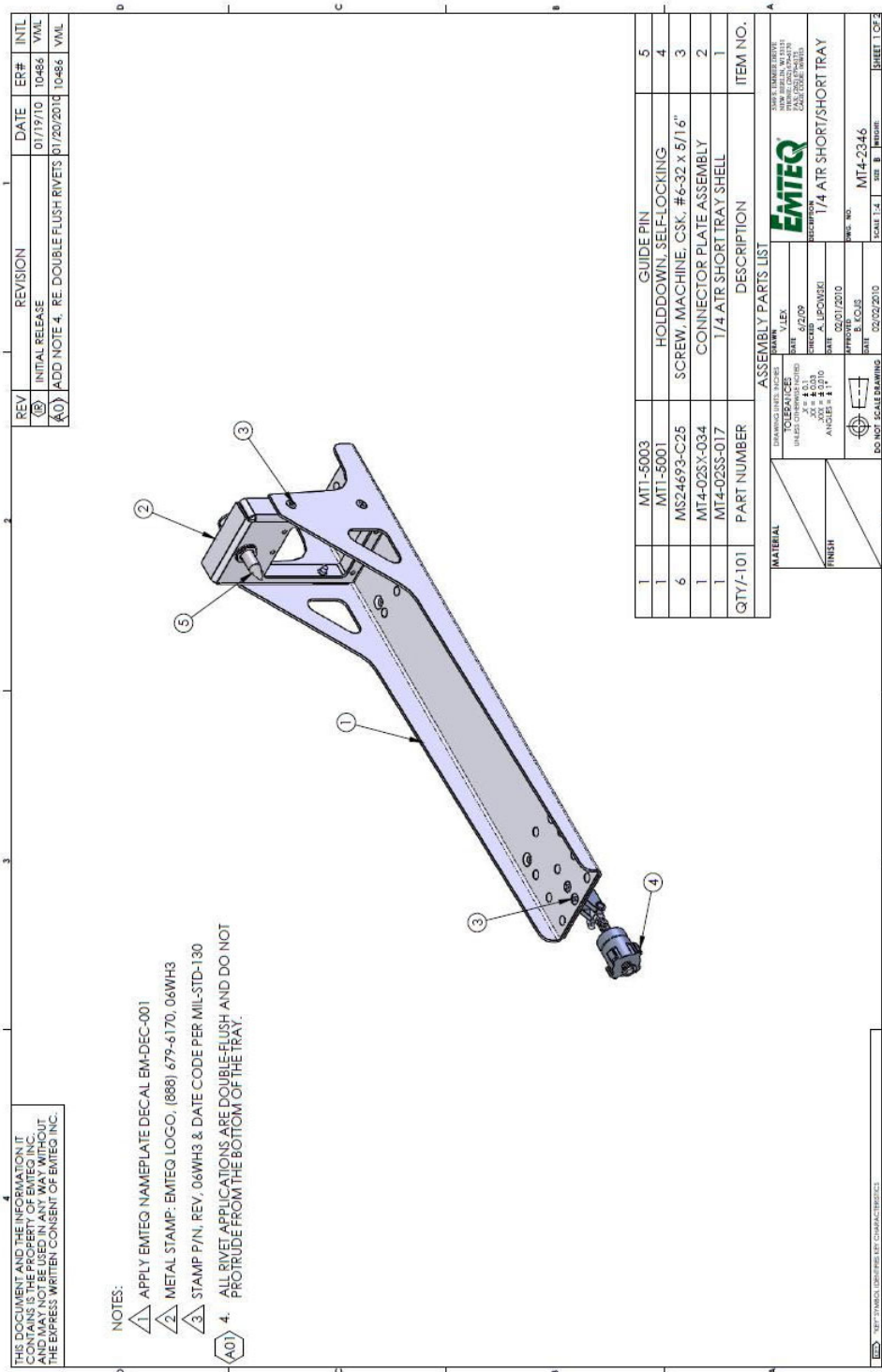


Figure 3-13: Outline drawing: SBU tray: EMTEQ MT4-2346-101 (page 1)

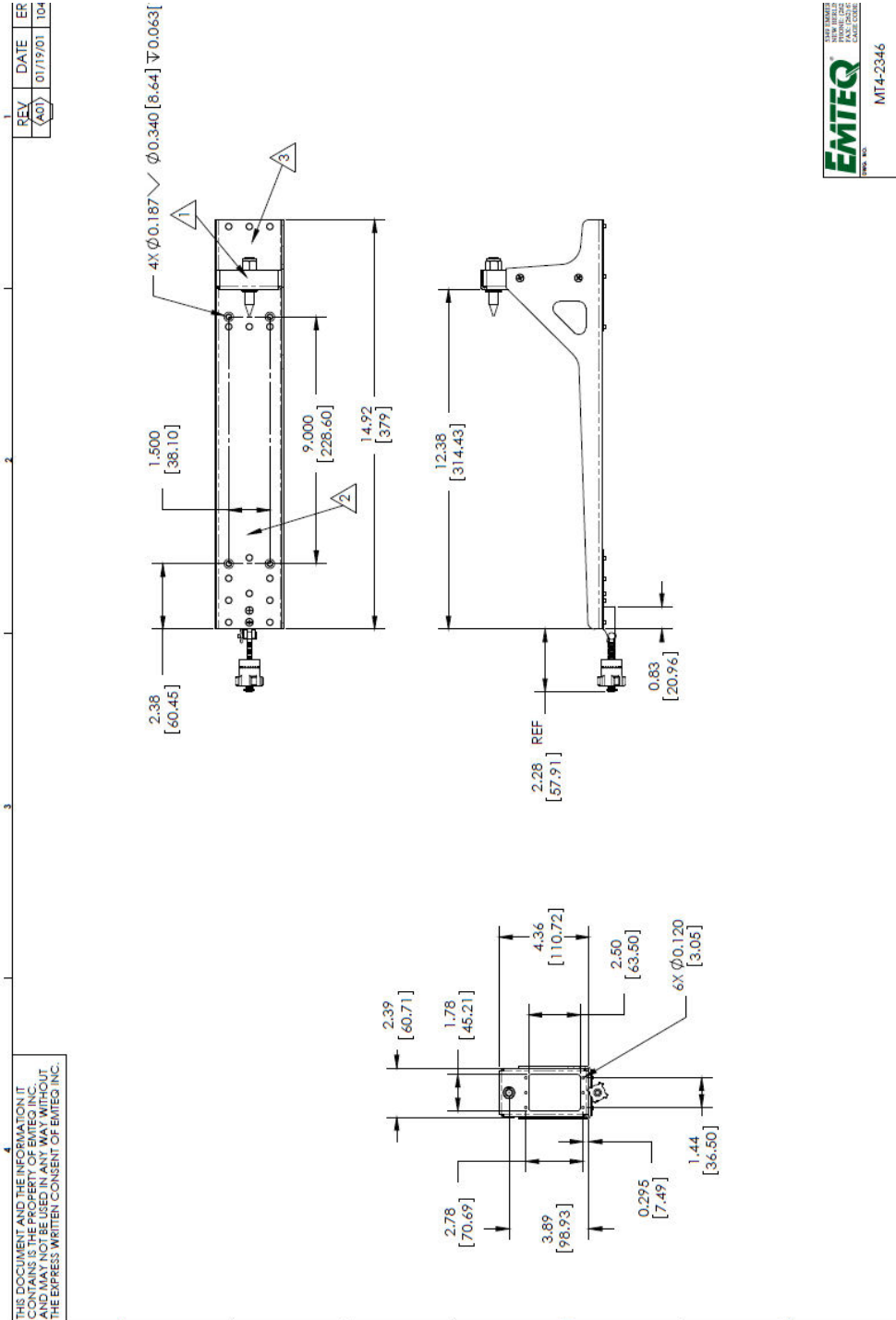


Figure 3-14: Outline drawing: SBU tray: EMTEQ MT4-2346-101 (page 2)

3.11 SBU tray connector

For correct index pin codes see Figure 4-2 on page 4-3.

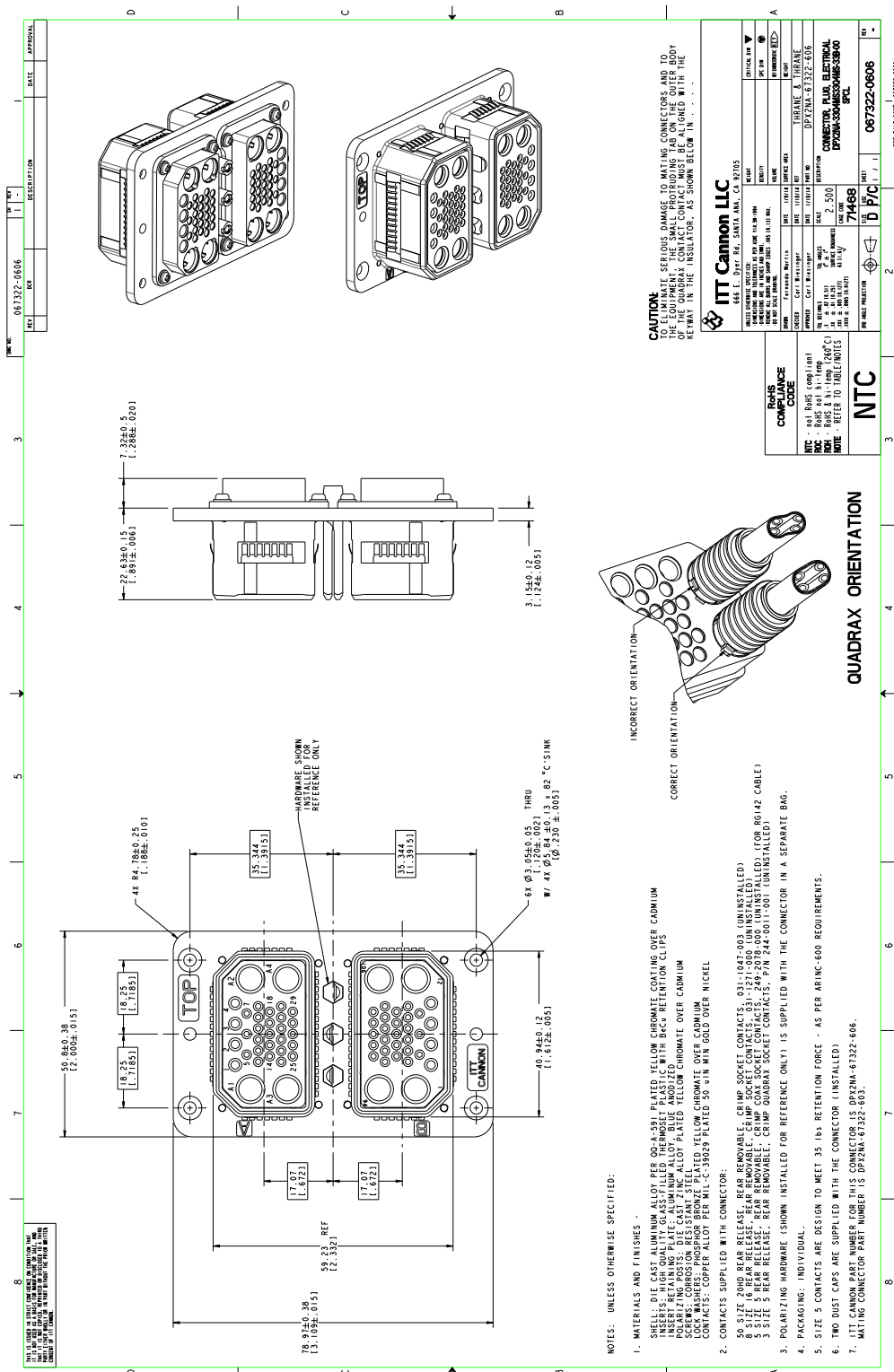


Figure 3-15: Outline drawing: SBU tray connector: ITC Cannon DPX2NA-67322-606

3.12 Contact Assembly: Quadrax Pin size 5 special

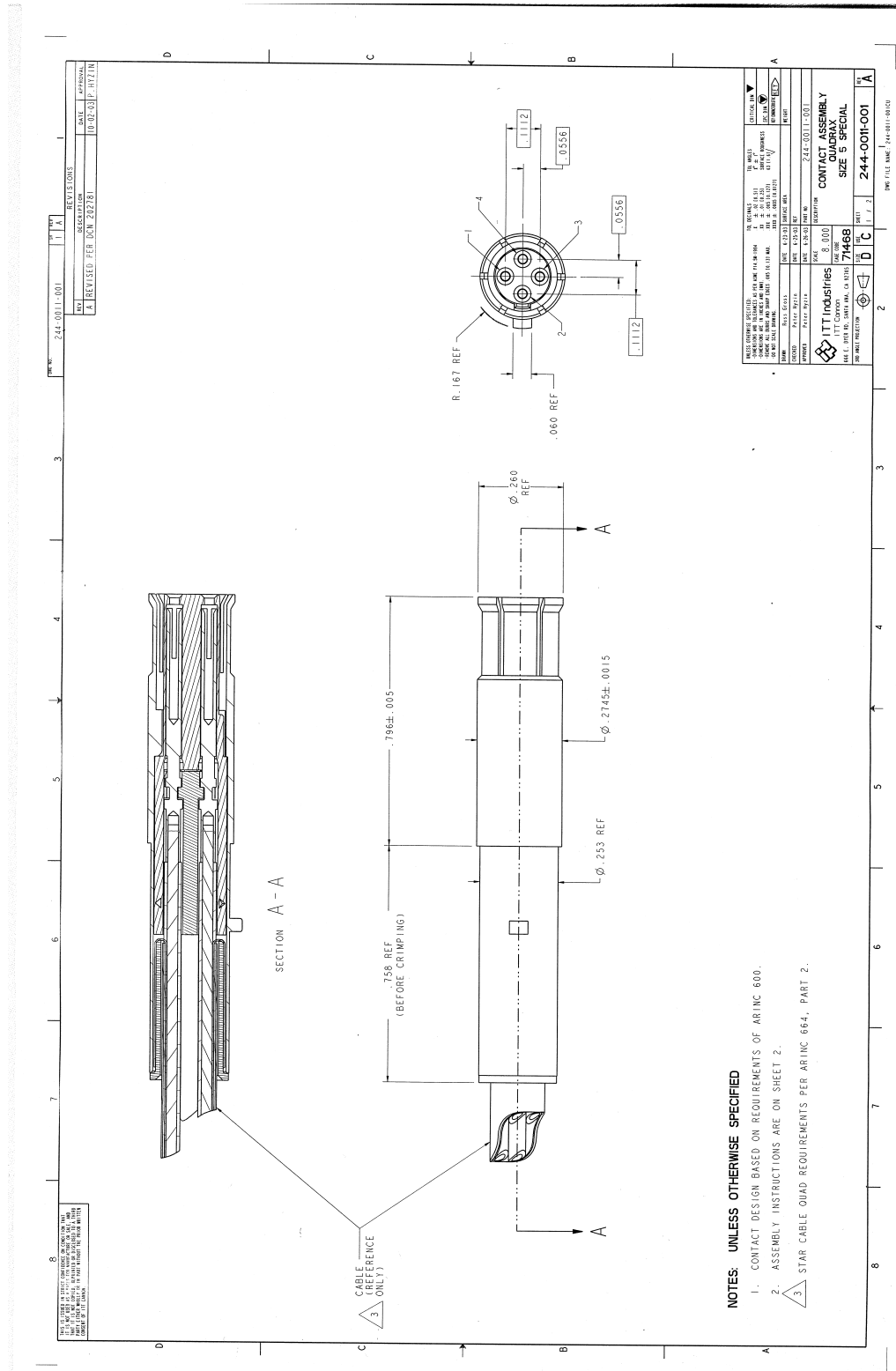


Figure 3-16: Contact Assembly: Quadrax Pin size 5 special: ITT Cannon 244-0011-001

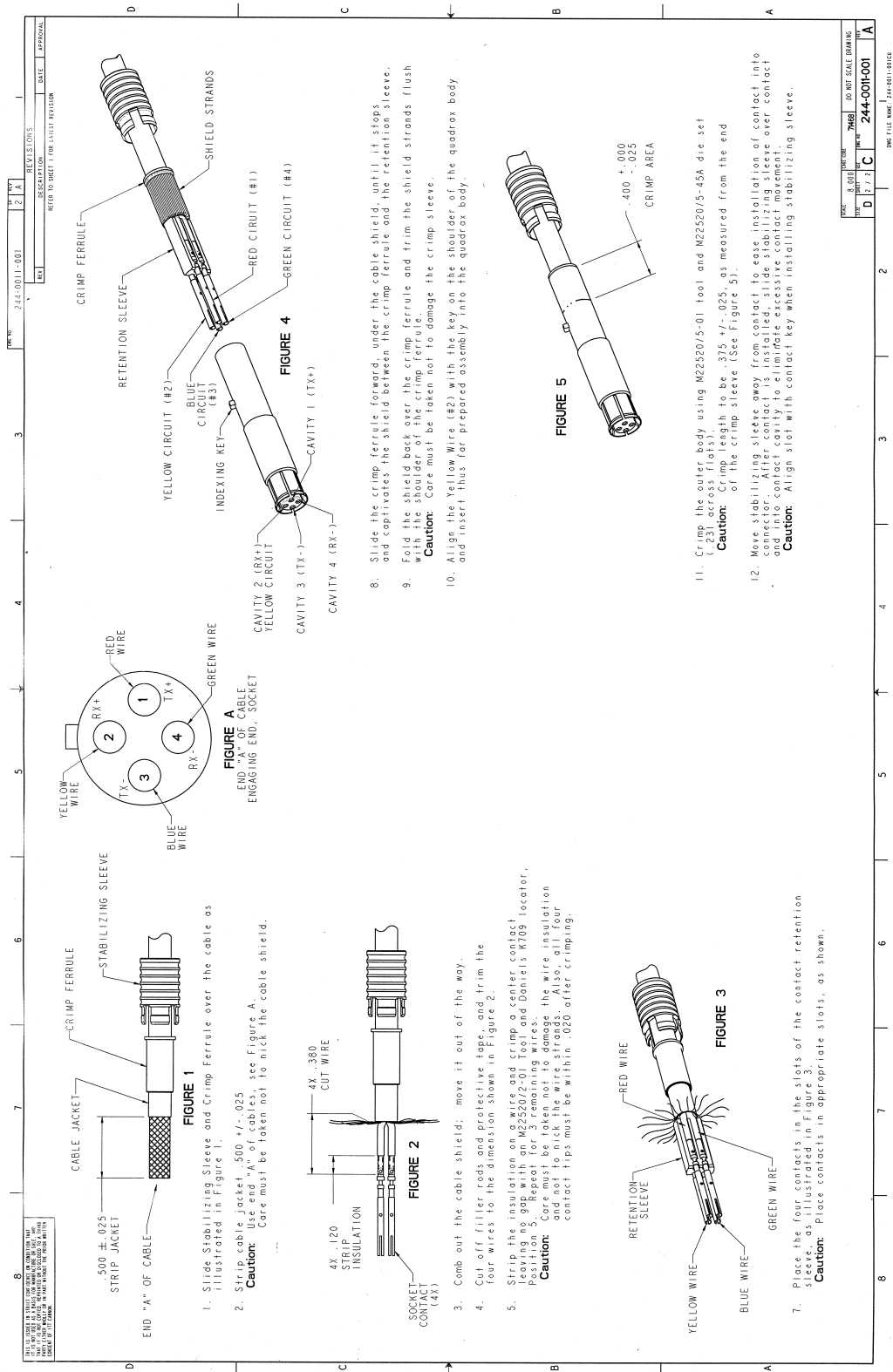
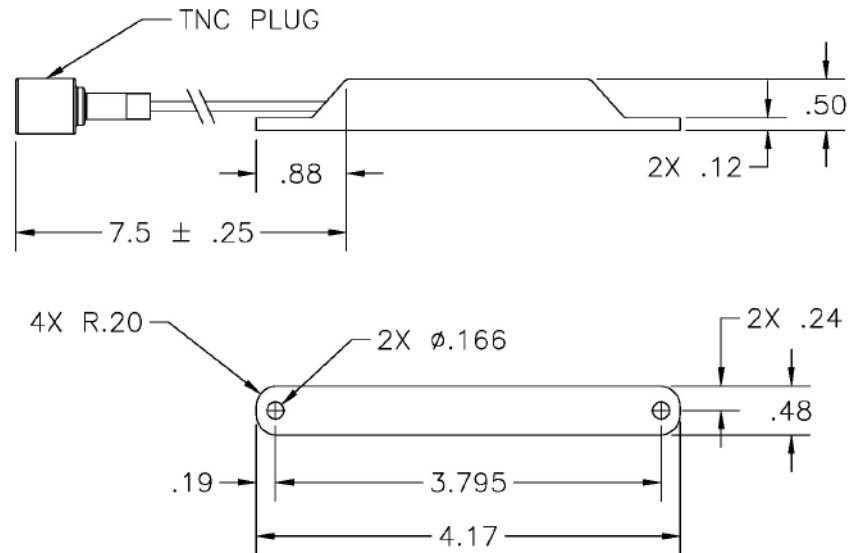


Figure 3-16: Contact Assembly: Quadrax Pin size 5 special: ITT Cannon 244-0011-001 (Continued)

3.13 TT-5040A-004 WLAN antenna

Original Manufacturer P/N: VT Miltope 901167-2.



Measures are in inches.

Figure 3-17: Outline drawing: TT-5040A-004 WLAN antenna

3.14 Switch Annunciator Panel

This panel is no longer available.
Original Manufacturer P/N: MD41-1948.

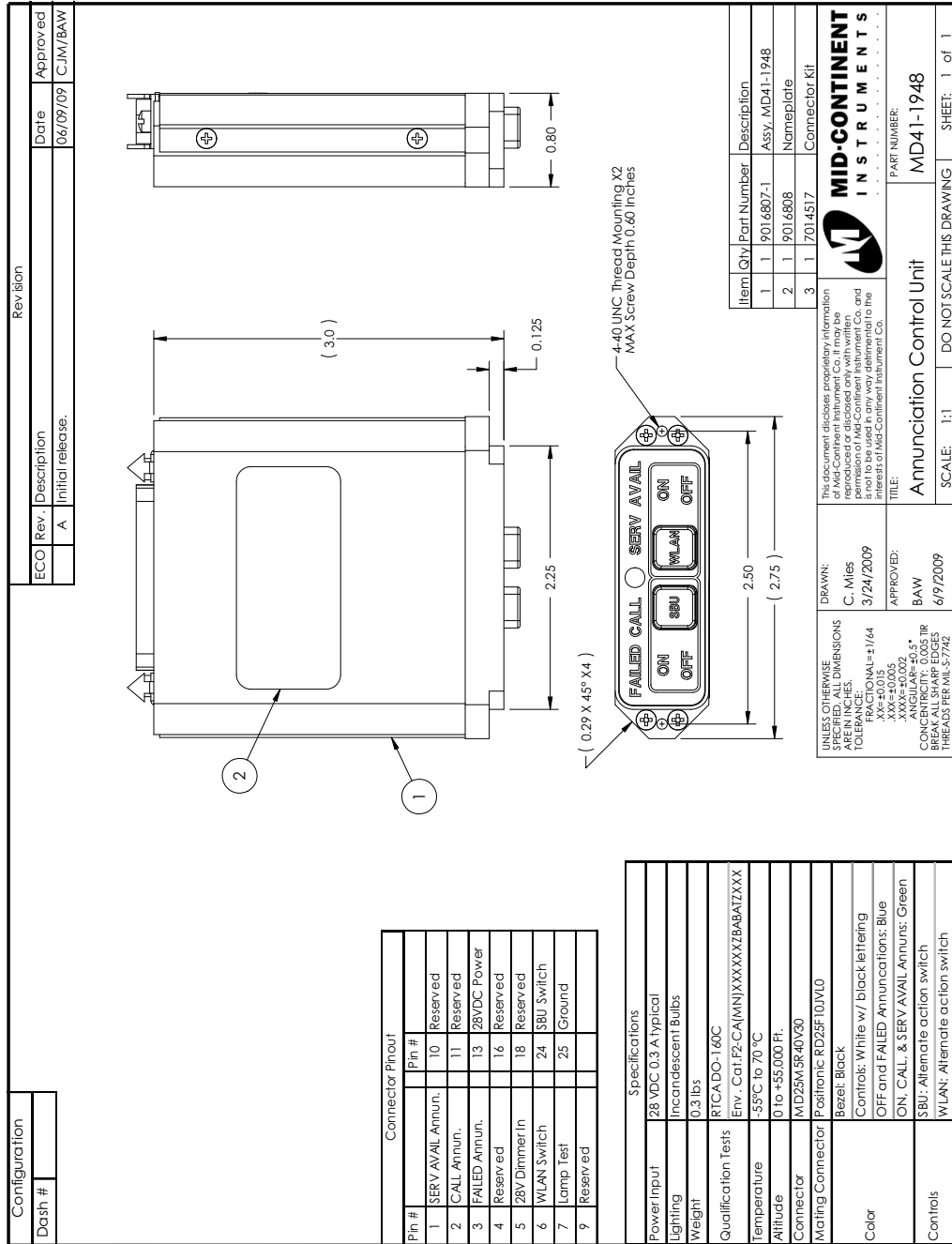


Figure 3-18: Outline drawing: Switch Annunciator panel