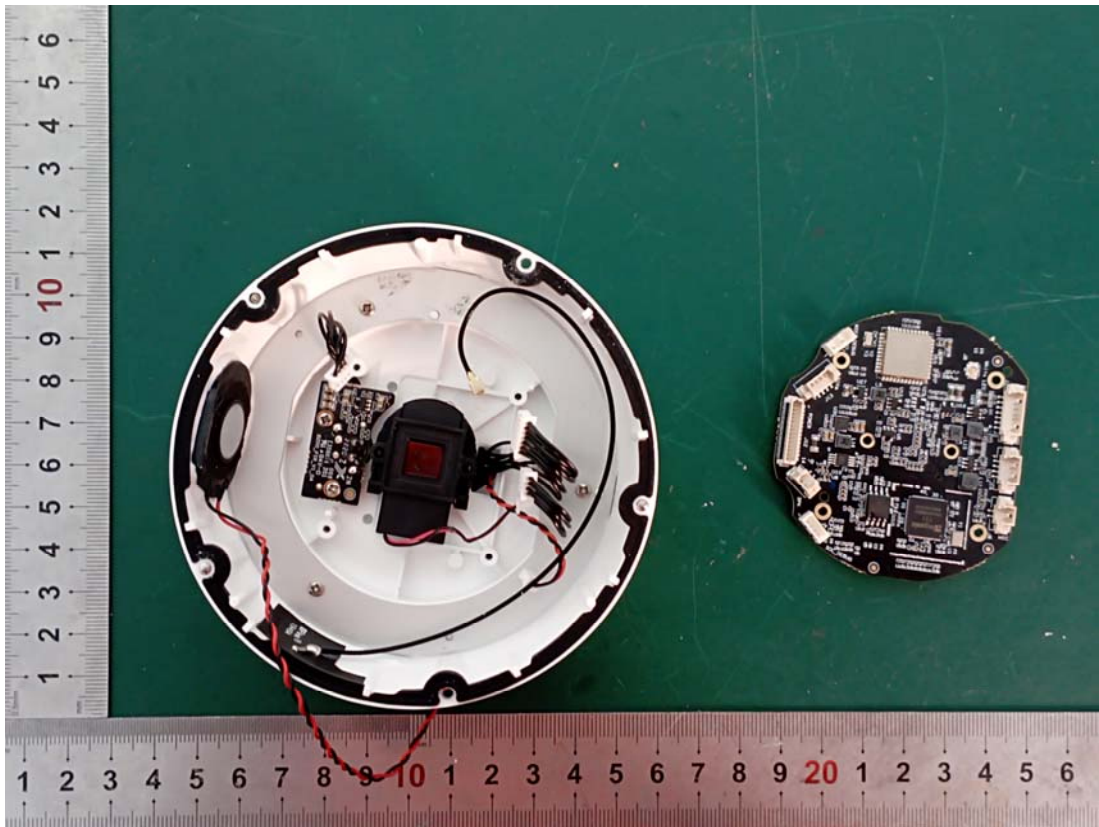
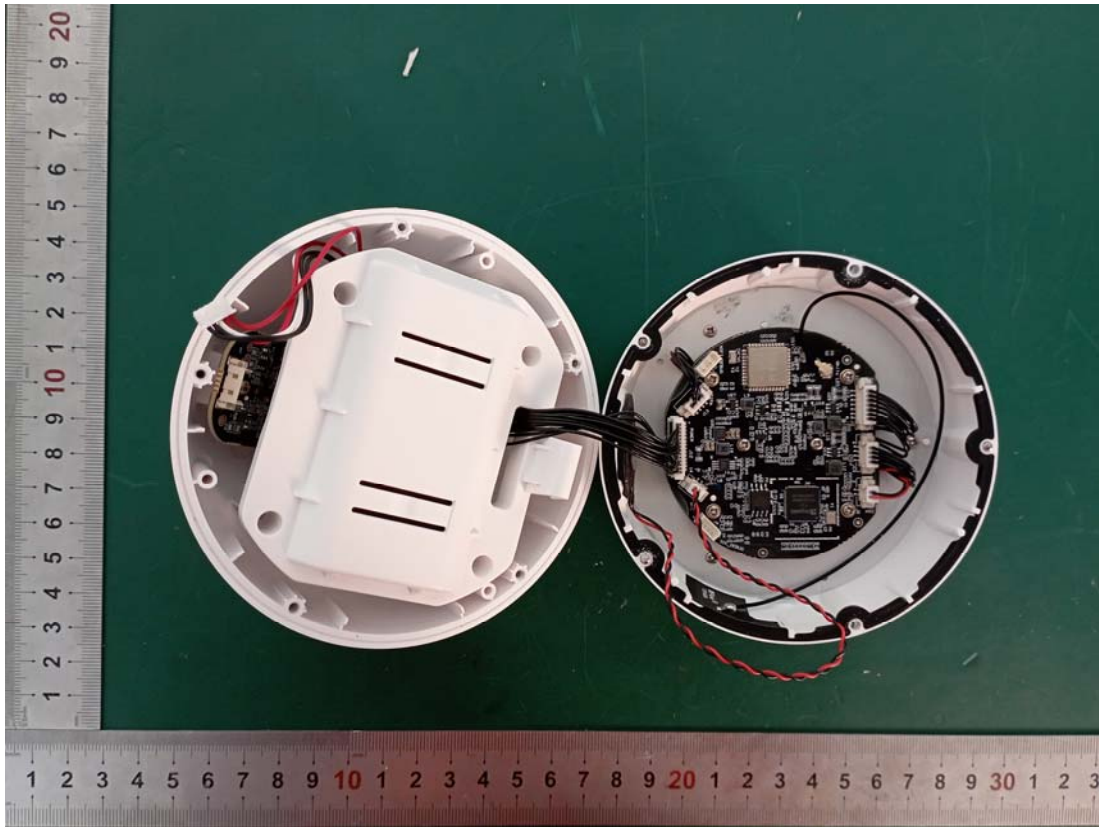
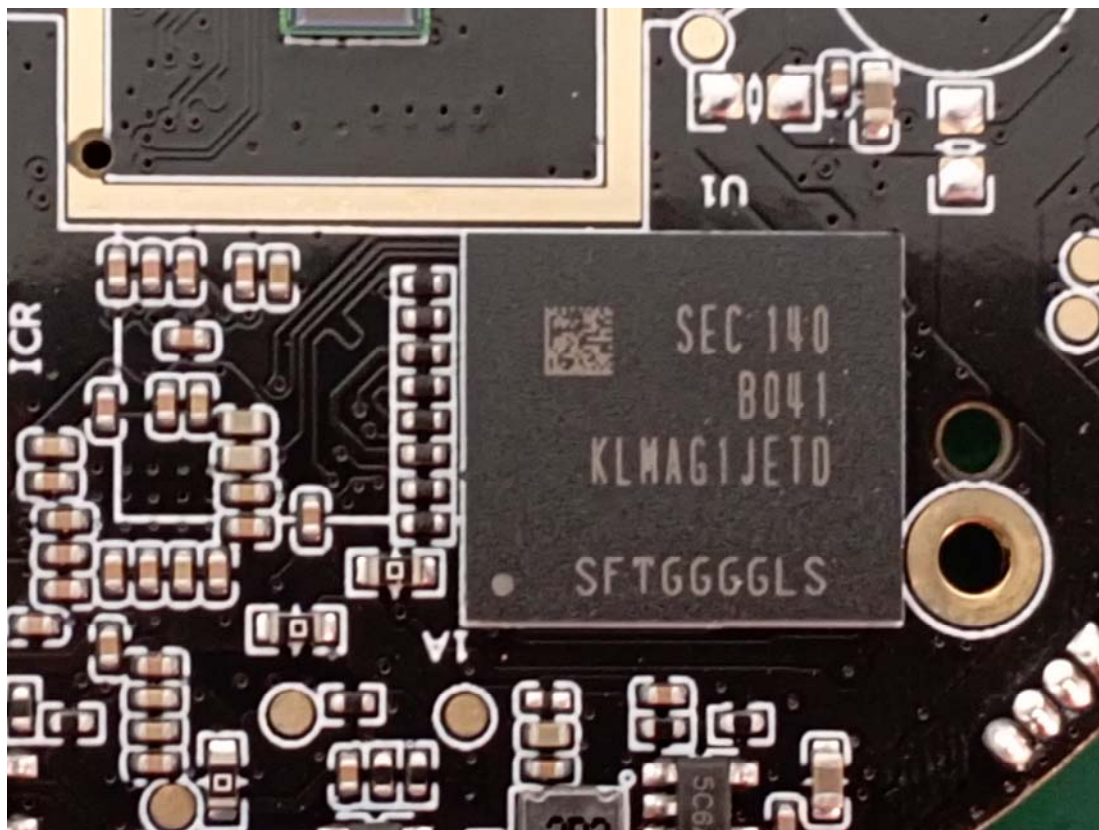
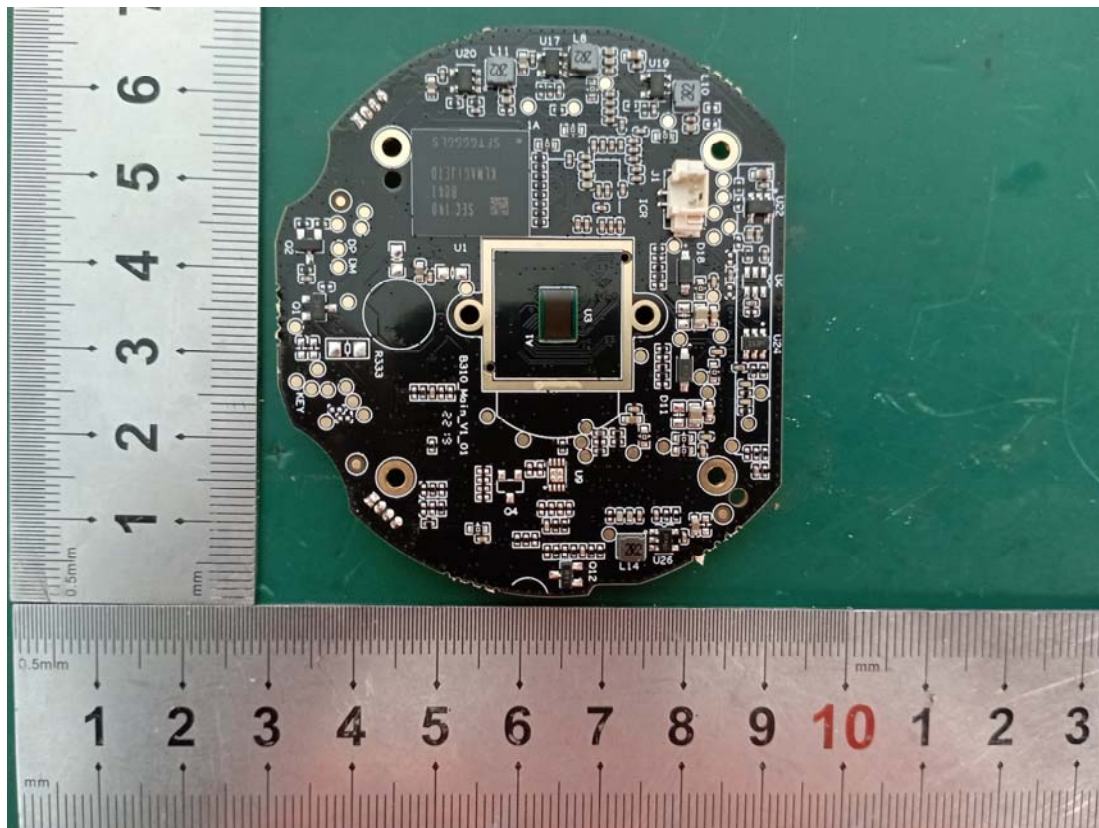
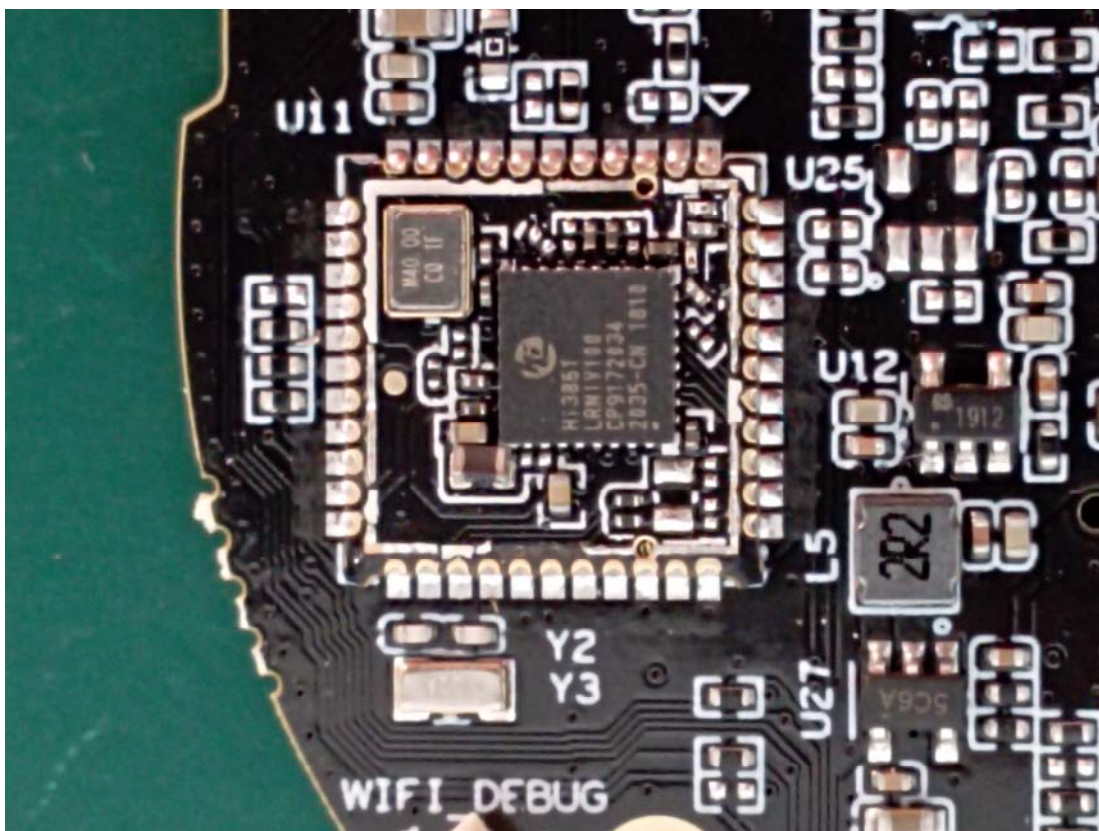
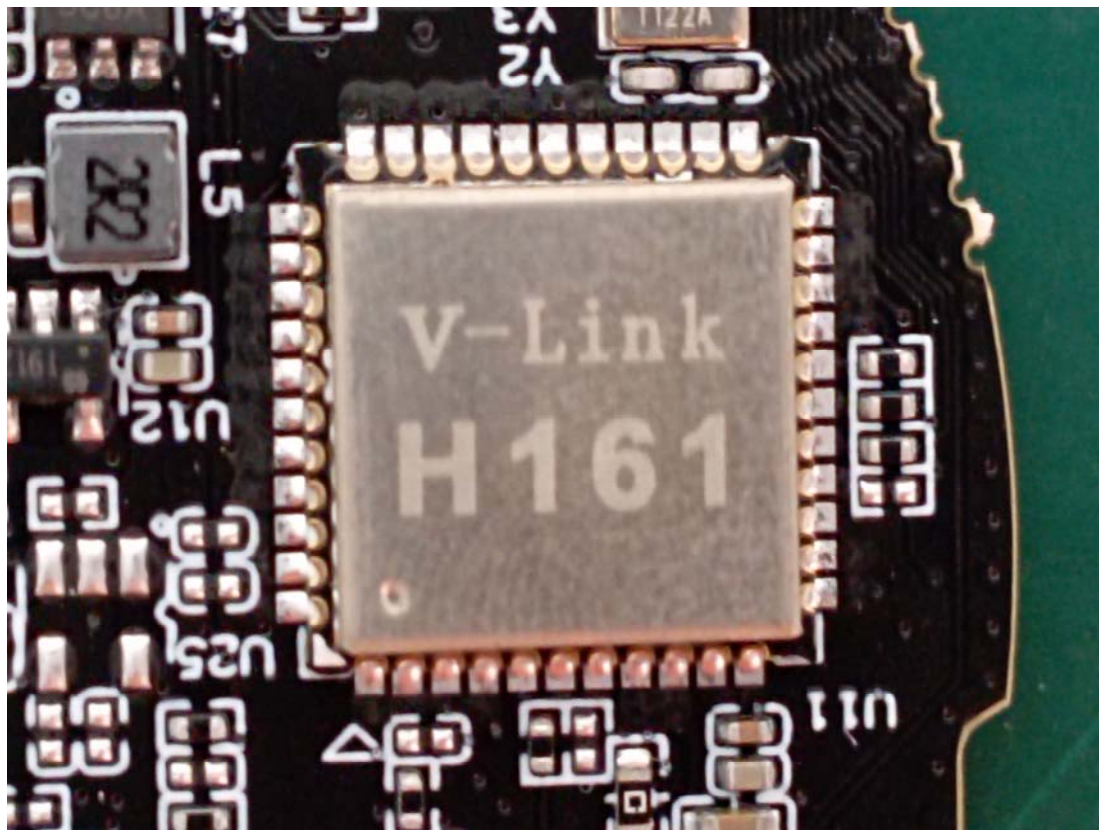
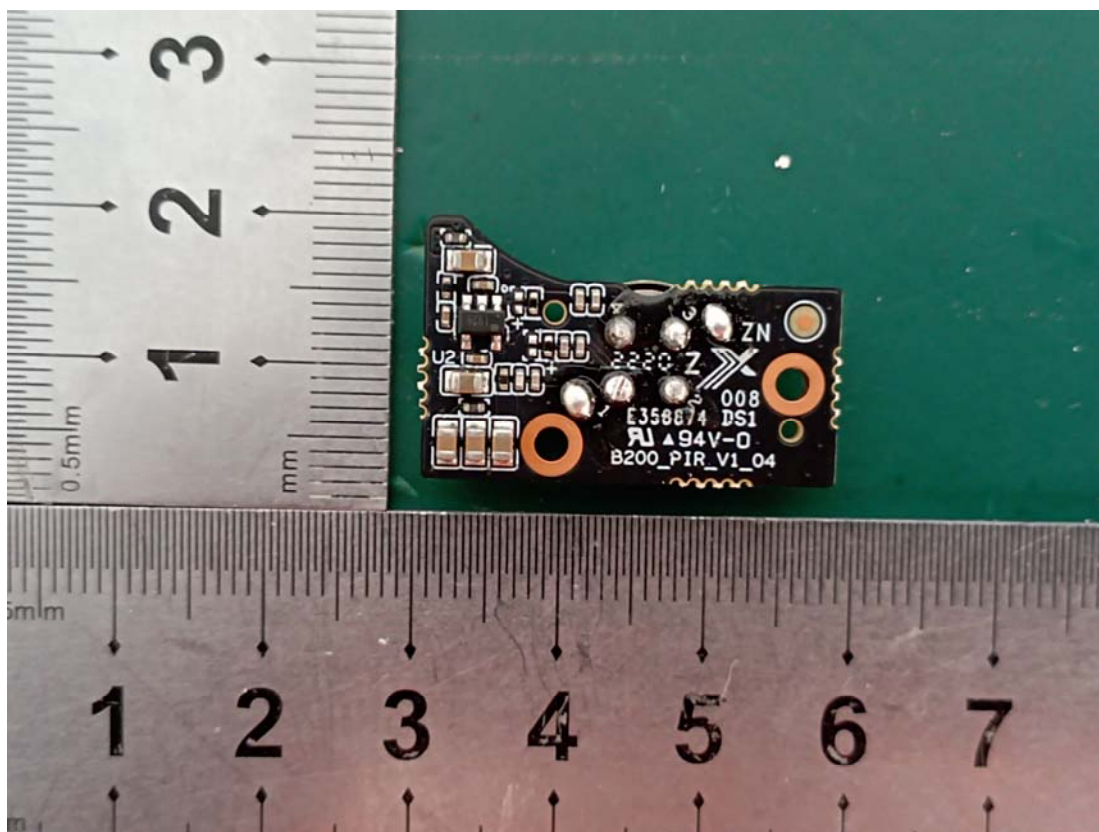
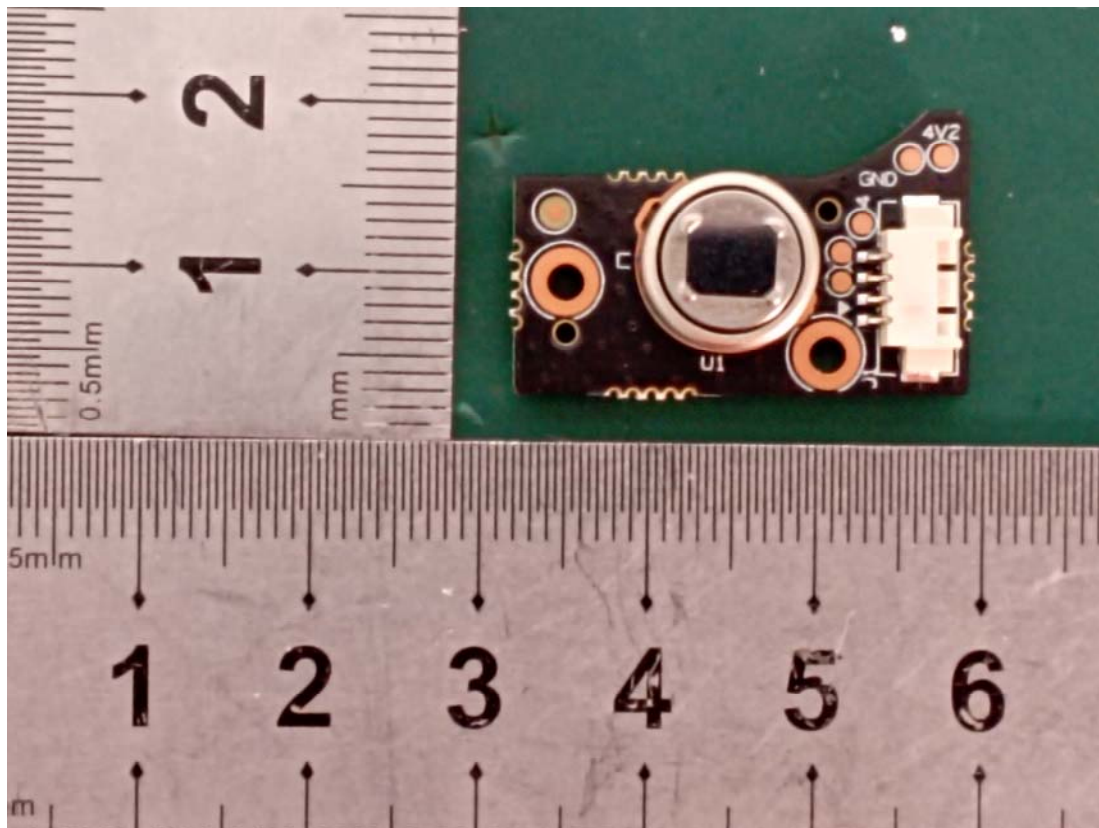


EXHIBIT C - EUT INTERNAL PHOTOGRAPHS









A photograph showing the interior of a white plastic enclosure. A black rectangular module, labeled "RFlink® 1946A", is mounted on the inner wall. It is connected to several wires, including a prominent black cable that loops out of the enclosure and ends in a gold-colored SMA connector. Other wires with red and black insulation are also visible. A red rectangular box highlights the RFlink module and its immediate connections.

