

Quick Start Guide

Airfrex Bluetooth Recevier (all models)
www.airfrex.com

This user manual applies to all Bluetooth receivers of Airfrex brand, including the following models:

AF03 / AF57 / AF25 / AIU2 / AI2B / MOME / SEHD
ATMX / AIU5 / ASON / AF100 / AF88

What's inside the box ?

Bluetooth Receiver X1 USB charging cable X1 Quick Start Guide X1

How to Operate This Device

Power on this Bluetooth receiver

1--Single press the button

2--The Bluetooth LED indicator blinks bluetooth and red

3--It is ready to be paired

Pairing You Mobile Device

- 1---Turn on the Bluetooth functionality on your mobile devices, mobile phone / iPad.
- 2---Search and select “ AF Lossless ” in your mobile device
- 3---Press “ AF Lossless ” icon in your mobile device to pair our Bluetooth receiver.
- 4---When device has connected to the Bluetooth receiver, the LED turns to solid blue.

Optional Bass Boost Feature

To Activate or deactivate the bass boost, please double click the button during music playing.

Butoon Feature	Procedure
Turn ON	Single press the button
Turn OFF	Long press the button
Play / Pause	Single press the button to pause/replay
Answer / End Phone	Single press the button
Bass Boost Feture ON / OFF	In playing process, double click the button

Charging

- 1---Plug the small end of the USB cable into the USB charging port of the adapter.
- 2---Plug the other end into a USB wall charger or computer that is powered on.
- 3---Normally it takes around 3 seconds for the LED indicator to turn on.
- 4---During charging, the LED indicator will be in solid red.
- 5---It takes around 2 hour for a full charge.
- 6---Once it is fully charged, the LED indicator will be off.

Very Important Notes

1---This is a Bluetooth Receiver not Transmitter

Airfrex Bluetooth Receiver does not work with any Bluetooth headphone or Bluetooth Speaker because this a Bluetooth receiver not a Bluetooth Transmitter. If you need a Bluetooth adapter to work with your Bluetooth headphones or Bluetooth speakers, you need a Bluetooth Transmitter, please go and search “ Airfrex Bluetooth Transmitter ” or visit our website at www.airfrex.com

2---This Receiver Supports Using while Charging

If you want to charge this device while playing, please do not plug in the charging cable directly, otherwise, the device will be rebooted and music playing will be terminated. Please follow these steps:

A---- Plug and charge the Bluetooth receiver with our charging cable and the LED indicator will be in solid red which means the device is charging.

B----Long press the button until the LED indicator is flashing blue and red, which means the Bluetooth receiver is ready to be paired.

C----Search and Select “ AF Lossless ” on the Bluetooth list of your mobile device.

D----Once it has been paired, the flashing LED indicator will be turning to solid blue.

E----Play music with your mobile device, it is charging while using.

Trouble Shooting:

Can not Turn on----Need to charge

Can not Charge----Change a new charging cable/charger

Can not Pair-----On your device, turn on and off the Bluetooth functionality, then remove “ AF Lossless ” from the Bluetooth list on your mobile device, then repeat the above “ Paring your mobile device ” .

Not Work with Headphone----Check if this model is compatible with you headphone.

Sound Cutting in and out----Make sure your device is within a distance of 33 feet

No Sound/ Only One Side Has Sound/ Terrible Sound----Probably defected, please contact us for help via email at support@airfrex.com

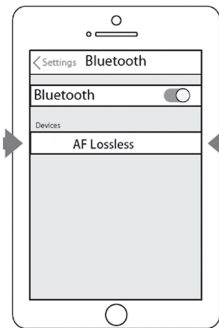
Specifications

Casing Material :	Aluminum and Plastic
Finish :	Matt
THD :	<0.05%
Amplifier :	Texas Instrument TPA6132A2
Channels:	2.0
Bluetooth Version:	CSR 4.1
Microphone:	Built-In / Hands Free
Frequency Response:	20Hz - 22kHz
Battery Capacity:	110mAh/ 3.7V
Battery Charging Time:	2 Hours
Play Time:	Up to 6 Hours
Bluetooth Signal Distance:	Up to 33 Feet

Airfrex shall not be held liable for any technical or user interface discrepancies in this manual. The Airfrex owner's manual may be subject to change without prior notice. Check out www.airfrex.com/ support for the latest verionof the Airfrex owner's manual.



Single press the button to turn on the device, the LED indicator will be flashing blue and red (ready to be paired).



Search and select" AF Lossless" on your Bluetooth device

NOTES ON ENVIRONMENTAL PROTECTION



This symbol means the product must not be discarded as household waste, and should be delivered to an appropriate collection facility for recycling. Proper disposal and recycling helps protect natural resources, human health and the environment.

For more information on disposal and recycling of this product, contact your local municipality, disposal service or the shop where you bought this product.

Airfrex hereby declares that this product is in compliance with the essential requirements and other relevant provisions of Directive 1999/5/EC and all other applicable EU directive requirements. The complete declaration of conformity can be found at: www.airfrex.com/support

Airfrex
www.airfrex.com

All rights reserve. Airfrex and the Airfrex logo are trademarks of Forient Technology Co., Limited. No part of this publication may be reproduced, stored or transmitted in any form without the permission Forient Technology Co., Limited. While every effort has been made to ensure the contents are accurate at the time of publication, features and specification may be subject to change without prior notice.

If you require service or any technical support, please visit our website at www.airfrex.com/support for assistance or contact us via email at support@airfrex.com

ADD: # 904071 Liangang Road, Baijiao Development Zone, Doumen, Zhuhai City, GD, China 519120

取扱説明書

Bluetoothレシーバー (すべてのモデルに適しています)

www.airfrex.com

パッケージ内容

Bluetoothレシーバー X1 USB充電ケーブル X1 取扱説明書 X1

デバイスの操作方法

デバイスの電源を入れます

1--ボタンを1回押す

2--BluetoothレシーバーのLEDライトが赤と青に点滅

3--ペアリング待ち

デバイスとペアリングする

1--デバイス (たとえば、モバイル、iPad) でBluetoothをオンにします

2--表示されたBluetoothデバイスのリストで「AF Lossless」を検索して見つける

3--「AF Lossless」をクリックしてデバイスとペアリングします

4--デバイスがBluetoothレシーバーと正常にペアリングされると、BluetoothレシーバーのLEDが青色に変わります

バスブースト (オプション)

音楽を再生するプロセスで、ボタンをダブルクリックしてこの機能を開始できます

ボタン機能	使い方
オンにする	ボタンを1回押す
消す	ボタンを長押し
一時停止 /リプレイ	ボタンを1回押す
電話に出る /電話を切る	ボタンを1回押す
低音ブーストをオン/オフにする	再生中に、ボタンをダブルクリックします

デバイスを充電する方法

1--USB充電ケーブルの片側をBluetoothレシーバーの充電ポートに差し込みます

2--USB充電ケーブルの側面を電話の充電器またはコンピューターに差し込みます (電源オン)

3---通常、LEDは3秒で赤色に変わります

4---充電プロセスの間、LEDライトは赤色のままです

5---充電時間は約2時間です

6---充電が完了すると、LEDライトが消えます

重要なお知らせ

デバイスは、Bluetoothトランスミッターではなく、Bluetoothレシーバーです

Airfrex Bluetoothレシーバーは、BluetoothヘッドホンまたはBluetoothスピーカーでは動作しません。これは、Bluetoothトランスミッターではなく、Bluetoothレシーバーだからです。BluetoothヘッドフォンまたはBluetoothスピーカーを使用するためにBluetoothアダプターが必要な場合は、Bluetoothトランスミッターが必要です。「Airfrex Bluetoothトランスミッター」を検索するか、www.airfrex.comのWebサイトにアクセスしてください。

Bluetoothレシーバーは使用中の充電をサポートします

Bluetoothレシーバーを使用中に充電する必要がある場合は、音楽の再生中にBluetoothレシーバーを充電器に直接接続しないでください。そうしないと、デバイスが再起動し、再生中の音楽が停止します。

以下のプロセスに従ってください

1---まず、デバイスを充電器に接続すると、デバイスのLEDライトが赤色になり、デバイスが充電中であることを示します。

2--LEDライトが赤と青に点滅するまでボタンを押し続けますこれは、デバイスがペアリングを待っていることを示します。

3---デバイスで「AF Lossless」を検索して選択します

4--接続が正常にペアリングされると、BluetoothレシーバーのLEDが青色になります

5---この時点で、充電中に再生できるように、デバイスを使用して音楽を再生します

一般的な問題と対策

起動できません----充電する必要があります

充電できません--- USB充電ケーブルまたは充電器を交換する必要がある

ペアリングできません-----モバイルデバイスで Bluetooth のオンとオフを切り替えてから、モバイルデバイスの Bluetooth リストから「AF Lossless」を削除し、上記の「デバイスとのペアリング」を繰り返します。ヘッドフォンと互換性がない-----この特定のモデルがヘッドフォンと互換性があるかどうかを確認してください。

断続的に聞こえる----- Bluetoothレシーバーをデバイスの範囲の10メートル以内に保管してください

音が出ない / 片側だけに音がある /音質が非常に悪い---このデバイスは不良品である可能性があります。support@airfrex.comまでご連絡ください

製品の仕様

シェル素材:	アルミニウム合金+プラスチック
表面処理:	マット
全高調波歪み:	<0.05%
アンプ:	Texas Instruments TPA6132A2
チャンネル:	Bluetoothバージョン: CSR 4.1
マイク:	内蔵/ハンズフリー
バッテリー容量:	110 mAh / 3.7ボルト
プレイ時間:	最大6時間
	Bluetooth範囲: 10メートル以内

FCC Warning Statement

Changes or modifications not expressly approved by the party responsible for compliance could void the user's authority to operate the equipment. This equipment has been tested and found to comply with the limits for a Class B digital device, pursuant to Part 15 of the FCC Rules. These limits are designed to provide reasonable protection against harmful interference in a residential installation. This equipment generates uses and can radiate radio frequency energy and, if not installed and used in accordance with the instructions, may cause harmful interference to radio communications. However, there is no guarantee that interference will not occur in a particular installation. If this equipment does cause harmful interference to radio or television reception, which can be determined by turning the equipment off and on, the user is encouraged to try to correct the interference by one or more of the following measures:

- - Reorient or relocate the receiving antenna.
- - Increase the separation between the equipment and receiver.
- - Connect the equipment into an outlet on a circuit different from that to which the receiver is connected.
- - Consult the dealer or an experienced radio/TV technician for help.

This device complies with part 15 of the FCC Rules. Operation is subject to the following two conditions: (1) This device may not cause harmful interference, and (2) this device must accept any interference received, including interference that may cause undesired operation.

RF Exposure Statement

To maintain compliance with FCC's RF Exposure guidelines, This equipment should be installed and operated with minimum distance of 20 cm the radiator your body. This device and its antenna(s) must not be co-located or operation in conjunction with any other antenna or transmitter.