

**US**

**MAGCH**

# **User Manual**

**Tablet**

Please read the manual before using the product.

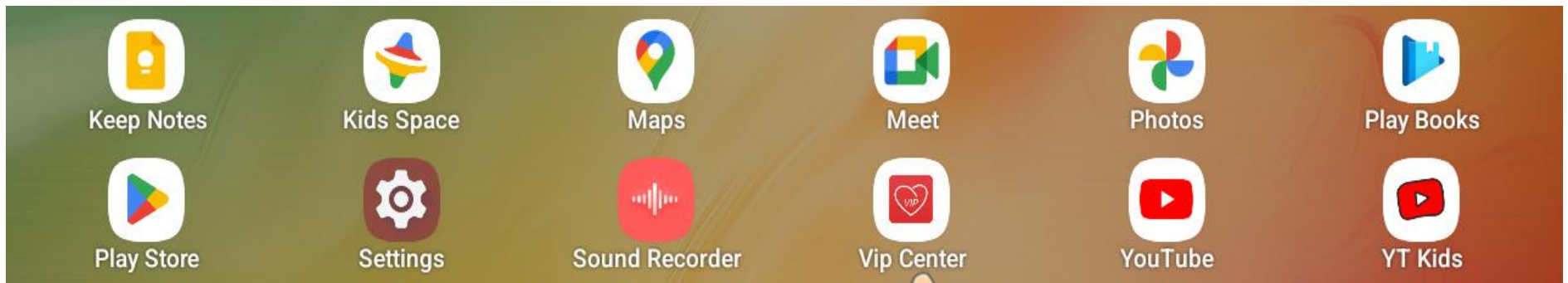


## Special Notice

### Activate Your Tablet Warranty

# MAGCH VIP Center, 365 Days Warranty Free

Activate the warranty through **"VIP Center"** APP , Enjoy 1 year warranty



If you have any questions, please contact our after-sales service email:

**[MAGCH-US@hotmail.com](mailto:MAGCH-US@hotmail.com)**

<b>FUNCTION OVERVIEW</b>	<b>04</b>
<b>GETTING STARTED</b>	<b>04</b>
<b>HOME SCREEN</b>	<b>04</b>
<b>SETTING BASICS</b>	<b>05</b>
<b>NETWORK CONNECTION</b>	<b>07</b>
<b>APP MANAGEMENT</b>	<b>07</b>
<b>INTERNET NAVIGATION</b>	<b>07</b>
<b>MULTIMEDIA</b>	<b>07</b>
<b>TROUBLESHOOTING</b>	<b>08</b>
<b>QUARANTEE</b>	<b>09</b>

# English



## Getting started

### **Power On/Off**

Press and hold the power button for 2-3s to turn on your tablet: Select your language and set up your tablet following the start guide:

Press and hold the power button for 2s, then release it. It will show Power Off and Restart on the screen. Tap Power Off to turn off the tablet.

Press and hold the power button for 5s to do a forced shutdown when it's frozen.

### **Battery**

It takes approximately 8-10 hours to fully charge the battery

If you rarely use a tablet, it is recommended that you charge the tablet at least once a week

DO NOT dispose the tablet in a fire.


### **Sleep Mode**

Simply press the power button once to switch the tablet to the Sleep Mode when the tablet is ON; press again to wake it up.


**Tip:** Go to Settings>Display>Sleep to set the time of Sleep Mode.

## HOME SCREEN

Icons on the Bottom Menu

 Back

 Home Screen

 Recent Activities

## Wallpapers, Widgets and Home Settings

Tap and hold the empty section of a Home screen. Wallpapers, Widgets and Home Settings will be displayed

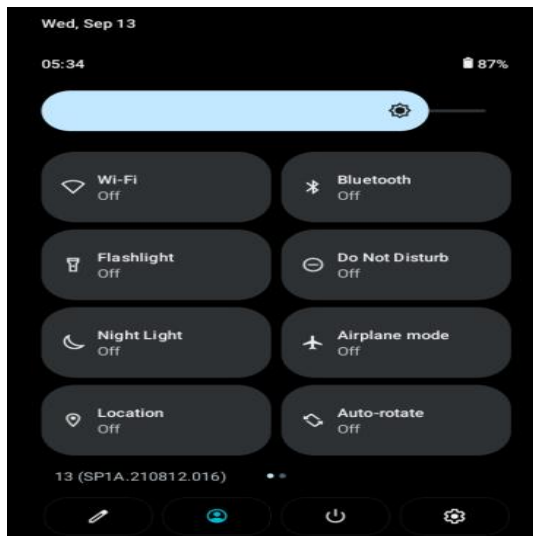
Tap Wallpapers icon to change the current wallpaper of the tablet from the default wallpapers or your photos, Tap Widgets, touch and hold any widget (e.g. Clock), then slide and add it to a Home screen.

Tap Home Settings to enable/disable adding icon to Home screen. This is applicable to the new Apps installed from Play Store.



## SETTING BASICS

### Quick Settings



## Swipe down from the top of the screen to access Quick Settings

- :Wi-fi Tap to connect to a wireless network
- :Bluetooth.Enable/disable the Bluetooth on the tablet
- :Flashlight
- :Do Not Disturb. Block sounds or vibrations according to the different modes
- :Night Light
- :Airplane Mode.Turn on/off all the network connectivity
- :Positioning, turning on/off positioning
- :Portrait/Auto-rotate/ Landscape.

## More Settings

Swipe down from the top of the screen, then tap the icon to enter the detailed Setting interface. Or, tap the Setting icon on the Home screen to enter.

## Network & Internet

- \* Connect to any working Wi-Fi
- \* Enable/disable the Airplane Mode
- \* Monitor the data usage.

## Connected devices

- \* Turn on/off Bluetooth
- \* Pair with Bluetooth devices and check the paired devices
- \* Add and check printers (Your printer needs to support wireless connection).

## Apps & notifications

- \* Check the Apps recently opened
- \* Check all the Apps on the tablet
- \* Set the App permissions
- \* Uninstall the third-party Apps
- \* Adjust App notification settings
- \* Clear the cache of the Apps.

## Battery

- \* Display the remaining battery power as a percentage
- \* Enable/disable the Battery Saver
- \* Adjust the time of entering the Sleep Mode.

## Display

- \* Adjust the screen brightness
- \* Adjust the font size and display size

Set a Screensaver

Change the wallpaper

Adjust the time of entering the Sleep Mode.

## Sound

- \* Set volume levels for media, alarms, and notifications
- \* Set preferences of Do Not Disturb
- \* Set the tunes for notifications and alarms

Turn on/off the sound for screen lock, charging and touch

## Screenshot

- \* Set the delay time for screen shot
- \* Set the location folder of screen shots
- \* Switch on/off Show the screen shot button in the statusbar

## Tip:

Press the volume down button and the power button together to capture a screen shot. Or, switch on show the screen shot button in the statusbar, then tap the icon on the bottom menu to capture a screen shot.

## Storage

- \* View and manage your storage space.

## Security&location

- \* Set screen lock pattern, e.g. password, PIN,Swipe etc.
- \* Enable/disable all the notifications while the screen is locked Enable/disable services.
- \* Turn on/off the location services for specific Apps
- \* Set to show/hide the password when input a password.

## Users&accounts

- \* Add and manage the user accounts on your tablet

## Accessibility

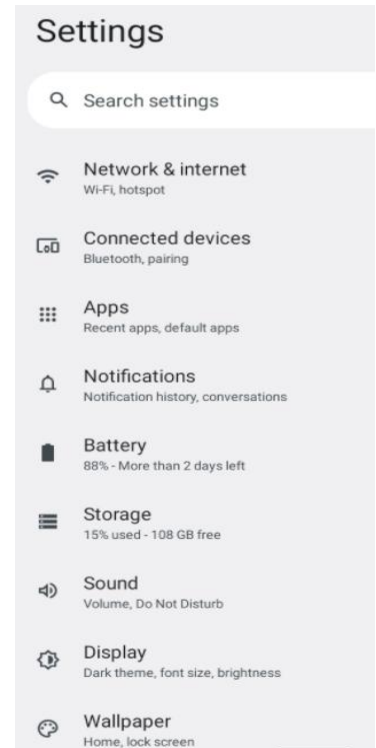
- \* For vision and hearing impaired users,manage settings for Screen readers,Subtitle, and more.

## Google

- \* Set the preferences for Google related services

## System

- \* Set Language.  
Tap Languages&input>Languages> +add, a language to add your language.After adding,hold and slide to the top to change the language.
- \* Restore factory setting.  
Tap Reset options> Erase all data (factory reset) to restore the factory setting.
- \* Set the date and time
- \* Turn on/off the Backup
- \* Check the detailed information about the tablet.



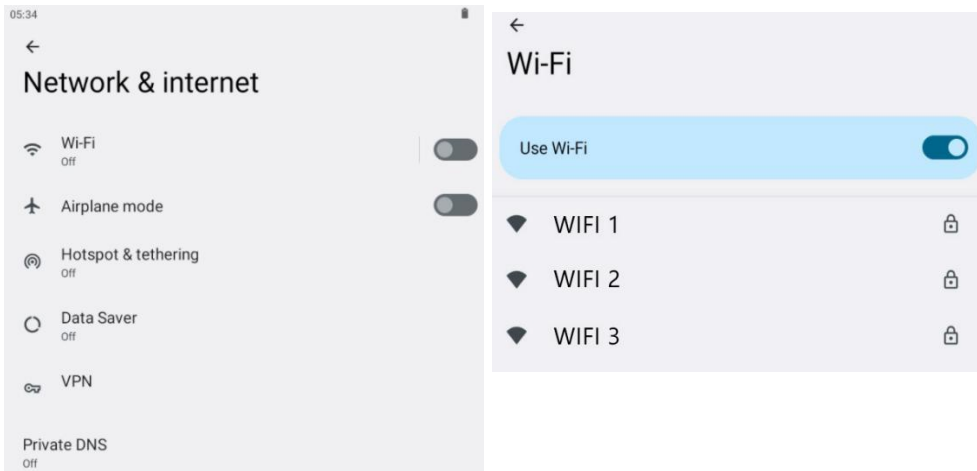


## NETWORK CONNECTION

Go to Wi-Fi settings in the Settings interface or directly enter Quick Settings.

### Wi-Fi Connection

1. Tap Network and Internet and turn on the Wi-Fi, All Wi-Fi connections available will be listed;
2. Select your Wi-Fi and input the correct password.



### Bluetooth Paring

Please turn on the Bluetooth on your tablet and your bluetooth device.

1. Tap Connected devices and turn on the Bluetooth;
2. Tap Bluetooth > +pair new device to enter the scanning interface. Devices available will be displayed after a few seconds;
3. Tap the desired device to get a pairing code and click PAIR on both devices. An automatic connection will be applied to some devices.



## APP MANAGEMENT

### App Download and Installation

1. Tap and open Play Store on the Home screen;
2. Log into your Google account, search and download the App you need.

### App Management

#### Move the App

Tap and hold the App, then slide it to a desired screen.

#### Uninstall the App

Tap and hold the App, then slide to the trash bin to uninstall the App.

#### Clear the Cache of the App

1. Go to Settings > Apps & notifications;
2. Select an App > Storage > CLEAR CACHE.

### INTERNET NAVIGATION

Please make sure the tablet is connected to a working Wi-fi network before navigating the internet.

You may use the Chrome browser pre-installed or use another browser downloaded.

### Multimedia

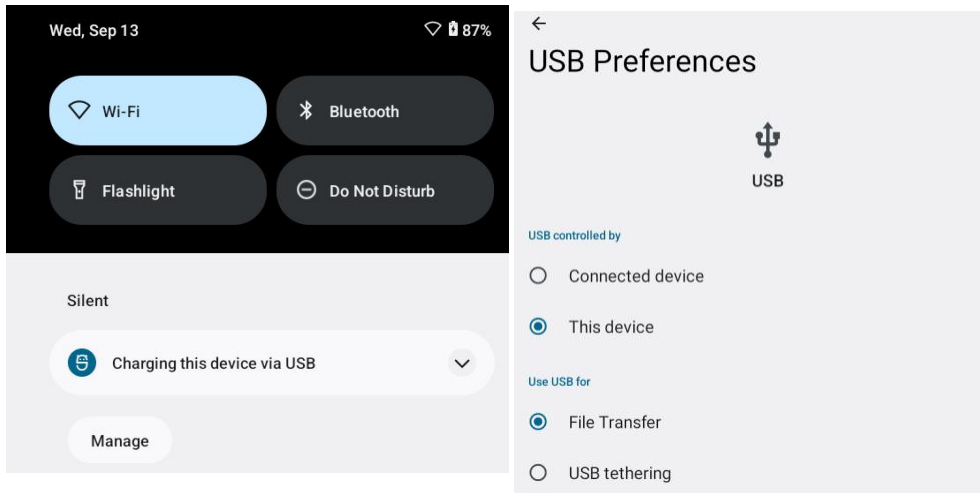
#### Connecting to the Computer

1. Connect your tablet to the computer with USB cable and go to Quick Settings;
2. Tap Android Systems. USB charging this device > Tap for more options;

3. Select Transfer files;
4. Go to your computer and find your tablet to transfer files between your tablet and computer.

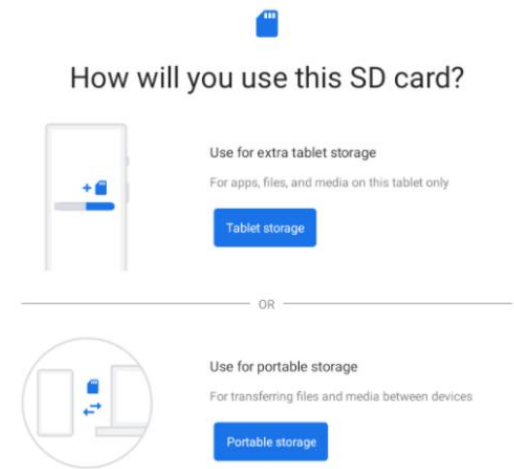
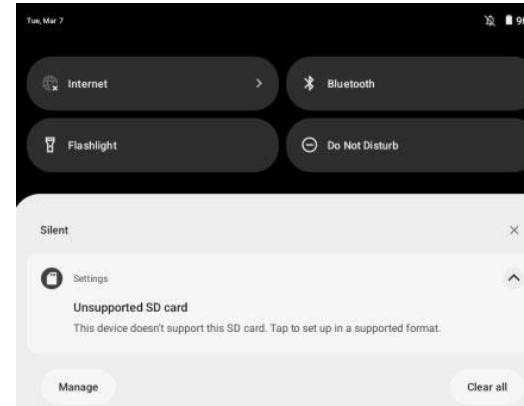
**Tip:**

Select Charging this device to charge your tablet;  
 Select File Transfer to transfer file between the devices.



**Connect to an External Device**

1. Install a micro SD card into the micro SD card slot and go to Quick Settings;
2. Tap New micro SD card detected or Set Up prompt;
3. Set the micro SD card as a portable storage by selecting Use as portable storage. Enter micro SD Card storage to move files between the card and tablet.



 **TROUBLESHOOTING**

**Q1. The tablet doesn't power on.**

- \* Reboot your tablet after charging for 30 minutes;
- \* Press the power button to check if the tablet is in the Sleep Mode;
- \* Press and hold the power button for 5s to turn on tablet, then reboot it;
- \* Press the Reset button with a pin to reboot the tablet.

**Q2. The tablet doesn't charge.**

- \* Make sure the USB cable is properly plugged into the charging port;
- \* Try another compatible USB cable and adapter.



**Q3.Error message occurs during the operation.**

- \* Uninstall the APP with the error message, then download and install again;
- \* Press the Reset button with a pin to reboot the tablet.

**Q4.The tablet cannot be detected by the computer.**

- \* Make sure the tablet is powered on;
- \* Try another USB cable;
- \* Try another USB port on the computer;
- \* Instead of Charge this device,choose Transfer files or Transfer photos (PTP) when connecting the tablet to the computer.

**Q5.The tablet cannot connect to the Wi-Fi.**

- \* Make sure the Wi-Fi in your tablet is ON;
- \* Make sure you input the correct password when connecting the Wi-Fi;
- \* Restart the router;
- \* Make sure there is no filter setting or device connection limitation in the setting of the router;
- \* Forget the current Wi-Fi,reset the router and connect the Wi-Fi again.

**Q6.The storage space of the tablet is not enough.**

- \* Delete the Apps you don't use;
- \* Clear the cache of the Apps regularly;
- \* Install an Micro SD card to expand the storage.



**GUARANTEE**

**Warranty Card**

User information

Name: \_\_\_\_\_ Phone number: \_\_\_\_\_

Email: \_\_\_\_\_ Zip code: \_\_\_\_\_

Address: \_\_\_\_\_



Product information

Product model: \_\_\_\_\_ Product ID: \_\_\_\_\_

Purchase date: \_\_\_\_\_ Order number: \_\_\_\_\_



**Guarantee Item**

1. For defects caused by the quality of the product itself, free maintenance will be provided within 1 year from the date of purchase
2. Damage to the product caused by personal reasons: breakage, water penetration, wear of the product are not covered by the warranty
3. If you encounter any issues with your tablet, please contact us anytime and we are glade to assist you.

**WORRY-FREE SERVICE**

@

**MAGCH-US@hotmail.com**

**GUARANTEE**

**1.FBA Fast Shopping Guarantee**

**2.Product 1 Year Warranty Guarantee**

**3.Lifetime Customer Support**

Your email and valid order NO. will be used for  
Warranty & Anything Service

**Activation**

FCC Warning:

This equipment has been tested and found to comply with the limits for a Class B digital device, pursuant to part 15 of the FCC Rules. These limits are designed to provide reasonable protection against harmful interference in a residential installation. This equipment generates, uses and can radiate radio frequency energy and, if not installed and used in accordance with the instructions, may cause harmful interference to radio communications. However, there is no guarantee that interference will not occur in a particular installation. If this equipment does cause harmful interference to radio or television reception, which can be determined by turning the equipment off and on, the user is encouraged to try to correct the interference by one or more of the following measures:

- Reorient or relocate the receiving antenna.
- Increase the separation between the equipment and receiver.
- Connect the equipment into an outlet on a circuit different from that to which the receiver is connected.
- Consult the dealer or an experienced radio/TV technician for help.

Caution: Any changes or modifications to this device not explicitly approved by manufacturer could void your authority to operate this equipment.

This device complies with part 15 of the FCC Rules. Operation is subject to the following two conditions:

(1) This device may not cause harmful interference, and (2) this device must accept any interference received, including interference that may cause undesired operation.

This equipment complies with FCC radiation exposure limits set forth for an uncontrolled environment. This equipment should be installed and operated with minimum distance 0cm between the radiator and your body.