

# TEST REPORT

Report No.....: KS2209S4030E  
 FCC ID.....: 2A6QM-RS500  
 Applicant.....: Shenzhen Romoss Technology Co Ltd.  
 Address.....: Room 1601, BLOCK B, Building 7, Shenzhen International Innovation Valley, Nanshan,Shenzhen,China  
 Manufacturer.....: Shenzhen Vaco New Material Technology Co Ltd  
 Address.....: C203,No 3 Plant, Keji Road, Zhukeng Community, Longtian Street, Pingshan District, Shenzhen City, Guangdong Province,P.R.China  
 Product Name .....: Portable Power Station  
 Trade Mark.....: ROMOSS  
 Model/Type reference.....: RS500  
 Standard.....: FCC Rules and Regulations Part 18  
 Date of Receipt.....: September 7, 2022  
 Date of Test Date.....: September 7, 2022 ~September 20, 2022  
 Date of issue.....: September 22, 2022  
**Test result.....: Pass**

Prepared by:  
 ( Printed Name + Signature ) Ould Zheng *Ould Zheng*  
 -----  
 Approved by:  
 ( Printed Name + Signature ) Sky Dong *Sky Dong*

**Testing Laboratory Name.....: KSIGN(Guangdong) Testing Co., Ltd.**  
 Address.....: West Side of 1/F., Building C, Zone A, Fuyuan New Factory, Jiujiu Industrial Park, Minzhu, Shatou, Shajing, Bao'an District, Shenzhen, Guangdong, China

This test report may be duplicated completely for legal use with the approval of the applicant. It should not be reproduced except in full, without the written approval of our laboratory. The client should not use it to claim product endorsement by KSIGN. The test results in the report only apply to the tested sample. The test report shall be invalid without all the signatures of testing engineers, reviewer and approver. Any objections must be raised to KSIGN within 15 days since the date when the report is received. It will not be taken into consideration beyond this limit. The test report merely correspond to the test sample.

## Contents

<b>1 TEST SUMMARY .....</b>	<b>3</b>
1.1 Test Standards .....	3
1.2 Report Version .....	3
1.3 Address of the test laboratory .....	4
1.4 Test Facility .....	4
1.5 Environmental conditions .....	4
1.6 Summary of measurement results .....	5
1.7 Statement of the measurement uncertainty .....	5
<b>2 GENERAL INFORMATION .....</b>	<b>6</b>
2.1 Product Description .....	6
2.2 Description of the test mode .....	7
2.3 Special Accessories .....	7
2.4 Modifications .....	7
2.5 Equipments Used during the Test .....	8
<b>3 TEST CONDITIONS AND RESULTS .....</b>	<b>9</b>
3.1 AC Power Conducted Emission .....	9
3.2 Radiated Emission .....	12
3.3 Antenna Requirement .....	20
<b>4. TEST SETUP PHOTOS OF THE EUT .....</b>	<b>21</b>
<b>5. PHOTOS OF THE EUT .....</b>	<b>23</b>

# 1 TEST SUMMARY

## 1.1 Test Standards

The tests were performed according to following standards:

[FCC Rules and Regulations Part 18 Subpart C \(Section 18.307\)](#): Conducted limits.

[FCC Rules and Regulations Part 18 Subpart C \(Section 18.305\)](#): Field strength limits.

[FCC MP-5](#):FCC Methods of Measurements of Radio Noise Emissions from Industrial, Scientific, and Medical equipment

## 1.2 Report Version

Revised No.	Date of issue	Description
01	September 22, 2022	Original

TRF No. FCC Part 18\_R2

Add: West Side of 1/F., Building C, Zone A, Fuyuan New Factory, Jiujiu Industrial Park, Minzhu, Shatou, Shajing, Bao'an District, Shenzhen, Guangdong, China

Tel: +(86) 0755-2985 2678 Fax: +(86) 0755-2985 2397 E-mail: [info@gdkesign.cn](mailto:info@gdkesign.cn) Web: [www.gdkesign.com](http://www.gdkesign.com)

### 1.3 Address of the test laboratory

**KSIGN(Guangdong) Testing Co., Ltd.**

West Side of 1/F., Building C, Zone A, Fuyuan New Factory, Jiujiu Industrial Park, Minzhu, Shatou, Shajing, Bao'an District, Shenzhen, Guangdong, China

### 1.4 Test Facility

The test facility is recognized, certified, or accredited by the following organizations:

**CNAS-Lab Code: L13261**

KSIGN(Guangdong) Testing Co., Ltd. has been assessed and proved to be in Compliance with CNAS-CL01 Accreditation Criteria for Testing and Calibration Laboratories (identical to ISO/IEC17025: 2017 General Requirements) for the Competence of Testing and Calibration Laboratories.

**A2LA-Lab Cert. No.: 5457.01**

KSIGN(Guangdong) Testing Co.,Ltd. EMC Laboratory has been accredited by A2LA for technical competence in the field of electrical testing, and proved to be in compliance with ISO/IEC 17025:2017 General Requirements for the Competence of Testing and Calibration Laboratories and any additional program requirements in the identified field of testing.

**ISED#: 25693 CAB identifier.: CN0096**

KSIGN(Guangdong) Testing Co., Ltd. has been listed by Innovation, Science and Economic Development Canada to perform electromagnetic emission measurement.

**FCC-Registration No.: 294912 Designation Number: CN1328**

KSIGN(Guangdong) Testing Co., Ltd. EMC Laboratory has been listed on the US Federal Communications Commission list of test facilities recognized to perform electromagnetic emissions measurements.

### 1.5 Environmental conditions

During the measurement the environmental conditions were within the listed ranges:

Radiated Emission:

Temperature:	24 ° C
Humidity:	45 %
Atmospheric pressure:	950-1050mbar

AC Power Conducted Emission:

Temperature:	25 ° C
Humidity:	46 %
Atmospheric pressure:	950-1050mbar

TRF No. FCC Part 18\_R2

Add: West Side of 1/F., Building C, Zone A, Fuyuan New Factory, Jiujiu Industrial Park, Minzhu, Shatou, Shajing, Bao'an District, Shenzhen, Guangdong, China

Tel: +(86) 0755-2985 2678 Fax: +(86) 0755-2985 2397 E-mail: [info@gdksign.cn](mailto:info@gdksign.cn) Web: [www.gdksign.com](http://www.gdksign.com)

## 1.6 Summary of measurement results

FCC RULES	Description of test	Result	Test Engineer
§ 18.307 (b)	Conducted emissions test	Pass	Jax Yang
§ 18.305 (b)	Radiated emission test	Pass	Chad Lin

Note:

1. Pass: The EUT complies with the essential requirements in the standard

Fail: The EUT does not comply with the essential requirements in the standard

All indications of Pass/Fail in this report are opinions expressed by KSIGN(Guangdong) Testing Co., Ltd. based on interpretations and/or observations of test results Measurement Uncertainties were not taken into account and are published for informational purposes only.

2. N/A: means this test item is not applicable for this device according to the technology characteristic of device.

## 1.7 Statement of the measurement uncertainty

Test	Range	Measurement Uncertainty	Notes
Radiated Emission	30~1000MHz	4.06 dB	(1)
Conducted Disturbance	0.15~30MHz	2.14 dB	(1)
Radiated Emission	9~30MHz	2.20dB	(1)

(1) This uncertainty represents an expanded uncertainty expressed at approximately the 95% confidence level using a coverage factor of k=2.

TRF No. FCC Part 18\_R2

Add: West Side of 1/F., Building C, Zone A, Fuyuan New Factory, Jiujiu Industrial Park, Minzhu, Shatou, Shajing, Bao'an District, Shenzhen, Guangdong, China

Tel: +(86) 0755-2985 2678 Fax: +(86) 0755-2985 2397 E-mail: [info@gdkesign.cn](mailto:info@gdkesign.cn) Web: [www.gdkesign.com](http://www.gdkesign.com)

## 2 GENERAL INFORMATION

### 2.1 Product Description

<b>Product Name</b> .....:	Portable Power Station
<b>Trade Mark</b> .....:	ROMOSS
<b>Model/Type reference</b> .....:	RS500
<b>Model Different</b> .....:	N/A
<b>Hardware version</b> .....:	V1.0
<b>Software version</b> .....:	V1.0
<b>Power supply(Input )</b> .....:	Input DC: Adapter 12-28V(100W Max)/Solar Panel MPPT,12-28V(100W MAX)/Car Charger 12V(60W MAX)
<b>Wireless Charging(Output)</b> .....:	10W(Max)
<b>Operation frequency</b> .....:	110KHz - 205KHz
<b>Modulation type</b> .....:	ASK
<b>Antenna type</b> .....:	Loop coil antennas
Note: 1. For a more detailed features description, please refer to the manufacturer's specifications or the user's manual.	

TRF No. FCC Part 18\_R2

Add: West Side of 1/F., Building C, Zone A, Fuyuan New Factory, Jiujiu Industrial Park, Minzhu, Shatou, Shajing, Bao'an District, Shenzhen, Guangdong, China

Tel: +(86) 0755-2985 2678 Fax: +(86) 0755-2985 2397 E-mail: [info@gdkesign.cn](mailto:info@gdkesign.cn) Web: [www.gdkesign.com](http://www.gdkesign.com)

## 2.2 Description of the test mode

Equipment under test was operated during the measurement under the following conditions:

Charging and communication mode

Test Modes:		
Mode 1	Wireless Charging (10W)	Recorded
Mode 2	Wireless Charging (7.5W)	Recorded
Mode 3	Wireless Charging (5W)	Recorded
Mode 4	Standby	Pre-tested
Note: All test modes were pre-tested, but we only recorded the worst case in this report.		

## 2.3 Special Accessories

Follow auxiliary equipment(s) test with EUT that provided by the manufacturer or laboratory is listed as follow:

Description	Manufacturer	Model	Technical Parameters	Certificate	Provided by
Adapter	/	YHY-24004000	Input: 100-240V, 50/60Hz, 2.0A Output:DC 24V, 4.0A	FCC	manufacturer
Wireless charging load	/	EESON	5W/7.5W/10W	FCC	laboratory

## 2.4 Modifications

No modifications were implemented to meet testing criteria.

TRF No. FCC Part 18\_R2

Add: West Side of 1/F., Building C, Zone A, Fuyuan New Factory, Jiujiu Industrial Park, Minzhu, Shatou, Shajing, Bao'an District, Shenzhen, Guangdong, China

Tel: +(86) 0755-2985 2678 Fax: +(86) 0755-2985 2397 E-mail: [info@gdkesign.cn](mailto:info@gdkesign.cn) Web: [www.gdkesign.com](http://www.gdkesign.com)

## 2.5 Equipments Used during the Test

Transmitter spurious emissions & Receiver spurious emissions					
Item	Test Equipment	Manufacturer	Model No.	Serial No.	Cal. Until
1	EMI Test Receiver	R&S	ESR	102525	03/04/2023
2	High Pass Filter	Chengdu E-Microwave	OHF-3-18-S	0E01901038	03/04/2023
3	High Pass Filter	Chengdu E-Microwave	OHF-6.5-18-S	0E01901039	03/04/2023
4	Spectrum Analyzer	HP	8593E	3831U02087	03/04/2023
5	Ultra-Broadband logarithmic period Antenna	Schwarzbeck	VULB 9163	01230	12/04/2023
6	Loop Antenna	Beijin ZHINAN	ZN30900C	18050	03/04/2023
7	Spectrum Analyzer	R&S	FSV40-N	101798	03/04/2023
8	Horn Antenna	Schwarzbeck	BBHA 9120 D	2023	03/29/2023
9	Pre-Amplifier	Schwarzbeck	BBV 9745	9745#129	03/04/2023
10	Pre-Amplifier	EMCI	EMC051835SE	980662	03/04/2023

Item	Test Equipment	Manufacturer	Model No.	Serial No.	Cal. Until
1	LISN	R&S	ENV432	1326.6105.02	03/04/2023
2	EMI Test Receiver	R&S	ESR	102524	03/04/2023
3	Manual RF Switch	JS TOYO	/	MSW-01/002	03/04/2023

Note: 1)The Cal.Interval was one year.

2)The cable loss has calculated in test result which connection between each test instruments.

TRF No. FCC Part 18\_R2

Add: West Side of 1/F., Building C, Zone A, Fuyuan New Factory, Jiujiu Industrial Park, Minzhu, Shatou, Shajing, Bao'an District, Shenzhen, Guangdong, China

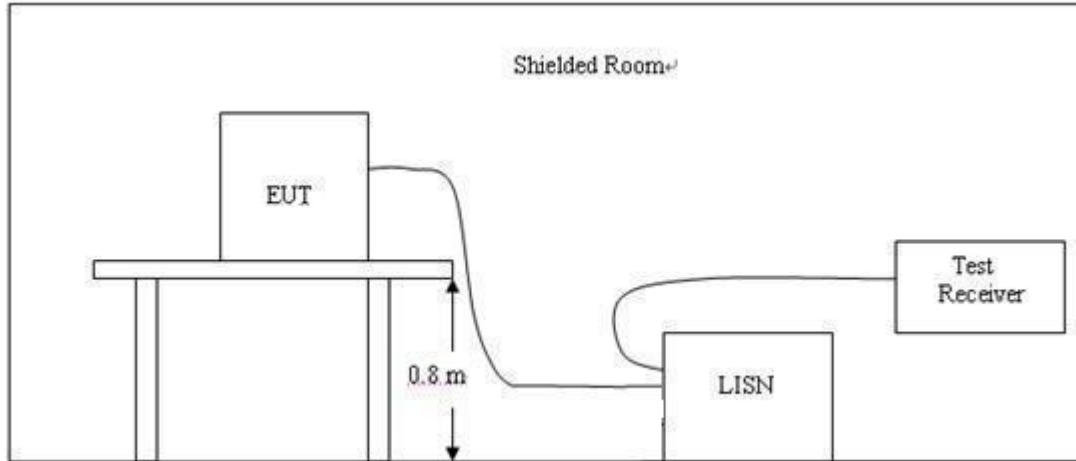
Tel: +(86) 0755-2985 2678 Fax: +(86) 0755-2985 2397 E-mail: [info@gdksign.cn](mailto:info@gdksign.cn) Web: [www.gdksign.com](http://www.gdksign.com)



### 3 TEST CONDITIONS AND RESULTS

#### 3.1 AC Power Conducted Emission

##### TEST CONFIGURATION



##### TEST PROCEDURE

- 1, The equipment was set up as per the test configuration to simulate typical actual usage per the user's manual. The EUT is a tabletop system, a wooden table with a height of 0.8 meters is used and is placed on the ground plane as per ANSI C63.10.
- 2, Support equipment, if needed, was placed as per ANSI C63.10.
- 3, All I/O cables were positioned to simulate typical actual usage as per ANSI C63.10.
- 4, If a EUT received DC power from the USB Port of Notebook PC, the PC's adapter received power through a Line Impedance Stabilization Network (LISN) which supplied power source and was grounded to the ground plane.
- 5, All support equipments received AC power from a second LISN, if any.
- 6, The EUT test program was started. Emissions were measured on each current carrying line of the EUT using a spectrum Analyzer / Receiver connected to the LISN powering the EUT. The LISN has two monitoring points: Line 1 (Hot Side) and Line 2 (Neutral Side). Two scans were taken: one with Line 1 connected to Analyzer / Receiver and Line 2 connected to a 50 ohm load; the second scan had Line 1 connected to a 50 ohm load and Line 2 connected to the Analyzer / Receiver.
- 7, Analyzer / Receiver scanned from 150 KHz to 30MHz for emissions in each of the test modes.

##### AC Power Conducted Emission Limit

For intentional device, according to § 18.307(a) AC Power Conducted Emission Limits is as following:

Frequency range (MHz)	Limit (dBuV)	
	Quasi-peak	Average
0.15-0.5	66 to 56*	56 to 46*
0.5-5	56	46
5-30	60	50

\* Decreases with the logarithm of the frequency.

##### TEST RESULTS

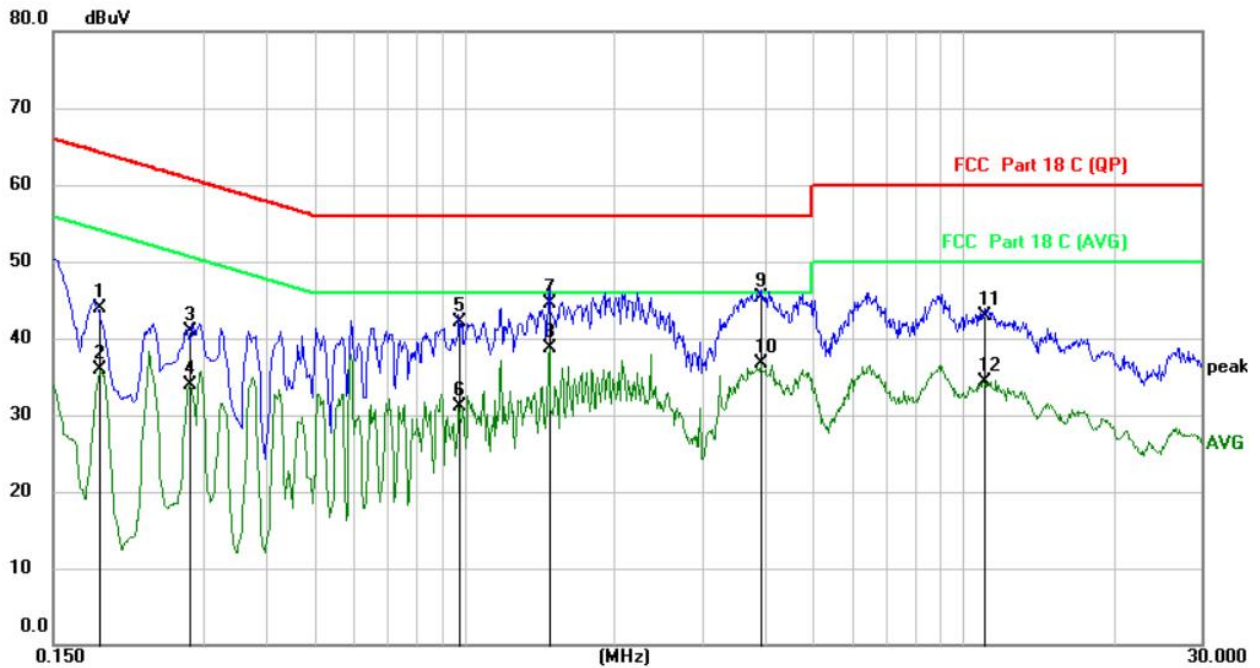
1. Both 120 VAC, 50/60 Hz and 240 VAC, 50/60 Hz power supply have been tested, only the worst result of 120 VAC, 60 Hz was reported as below:

TRF No. FCC Part 18\_R2

Add: West Side of 1/F., Building C, Zone A, Fuyuan New Factory, Jiujiu Industrial Park, Minzhu, Shatou, Shajing, Bao'an District, Shenzhen, Guangdong, China

Tel: +(86) 0755-2985 2678 Fax: +(86) 0755-2985 2397 E-mail: [info@gdksign.cn](mailto:info@gdksign.cn) Web: [www.gdksign.com](http://www.gdksign.com)

Power supply:	AC 120V/60Hz	Polarization	L
---------------	--------------	--------------	---



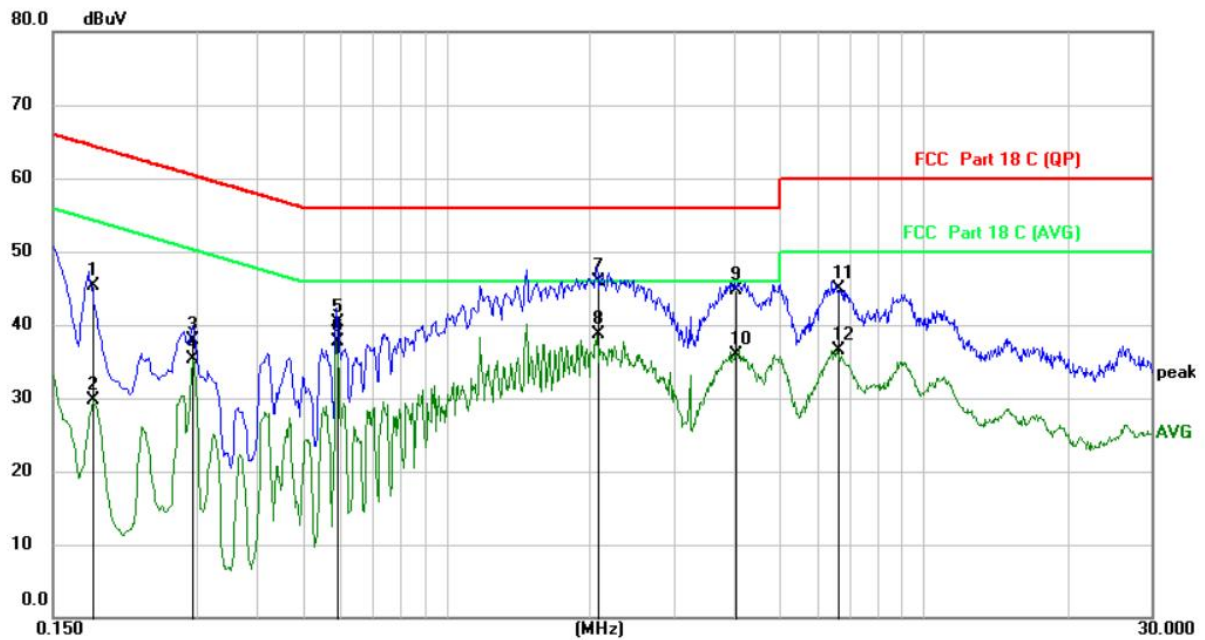
No.	Mk.	Freq. MHz	Reading Level dBuV	Correct Factor dB	Measure- ment dBuV	Limit dBuV	Over dB	Detector
1		0.1859	33.13	10.75	43.88	64.22	-20.34	QP
2		0.1859	25.14	10.75	35.89	54.22	-18.33	AVG
3		0.2816	30.34	10.60	40.94	60.77	-19.83	QP
4		0.2816	23.22	10.60	33.82	50.77	-16.95	AVG
5		0.9737	31.62	10.50	42.12	56.00	-13.88	QP
6		0.9737	20.66	10.50	31.16	46.00	-14.84	AVG
7		1.4818	34.08	10.42	44.50	56.00	-11.50	QP
8	*	1.4818	28.19	10.42	38.61	46.00	-7.39	AVG
9		3.9340	34.69	10.60	45.29	56.00	-10.71	QP
10		3.9340	26.01	10.60	36.61	46.00	-9.39	AVG
11		10.9778	32.33	10.65	42.98	60.00	-17.02	QP
12		10.9778	23.75	10.65	34.40	50.00	-15.60	AVG

- Note: Note:1).QP Value (dBμV)= QP Reading (dBμV)+ Factor (dB)  
 2). Factor (dB)=insertion loss of LISN (dB) + Cable loss (dB)  
 3). QPMargin(dB) = QP Limit (dBμV) - QP Value (dBμV)  
 4). AVMargin(dB) = AV Limit (dBμV) - AV Value (dBμV)

TRF No. FCC Part 18\_R2

Add: West Side of 1/F., Building C, Zone A, Fuyuan New Factory, Jiujiu Industrial Park, Minzhu, Shatou, Shajing, Bao'an District, Shenzhen, Guangdong, China  
 Tel: +(86) 0755-2985 2678 Fax: +(86) 0755-2985 2397 E-mail: [info@gdksign.cn](mailto:info@gdksign.cn) Web: [www.gdksign.com](http://www.gdksign.com)

Power supply: AC 120V/60Hz Polarization N



No.	Mk.	Freq. MHz	Reading Level dBuV	Correct Factor dB	Measure- ment dBuV	Limit dBuV	Over dB	Detector
1		0.1819	34.51	10.74	45.25	64.40	-19.15	QP
2		0.1819	18.87	10.74	29.61	54.40	-24.79	AVG
3		0.2938	27.40	10.53	37.93	60.42	-22.49	QP
4		0.2938	24.84	10.53	35.37	50.42	-15.05	AVG
5		0.5899	29.74	10.47	40.21	56.00	-15.79	QP
6		0.5899	27.31	10.47	37.78	46.00	-8.22	AVG
7		2.0700	35.38	10.56	45.94	56.00	-10.06	QP
8	*	2.0700	28.13	10.56	38.69	46.00	-7.31	AVG
9		4.0377	34.15	10.61	44.76	56.00	-11.24	QP
10		4.0377	25.21	10.61	35.82	46.00	-10.18	AVG
11		6.6257	34.25	10.57	44.82	60.00	-15.18	QP
12		6.6257	25.84	10.57	36.41	50.00	-13.59	AVG

Note: Note:1).QP Value (dBμV)= QP Reading (dBμV)+ Factor (dB)

2). Factor (dB)=insertion loss of LISN (dB) + Cable loss (dB)

3). QPMargin(dB) = QP Limit (dBμV) - QP Value (dBμV)

4). AVMargin(dB) = AV Limit (dBμV) - AV Value (dBμV)

TRF No. FCC Part 18\_R2

Add: West Side of 1/F., Building C, Zone A, Fuyuan New Factory, Jiujiu Industrial Park, Minzhu, Shatou, Shajing, Bao'an District, Shenzhen, Guangdong, China

Tel: +(86) 0755-2985 2678 Fax: +(86) 0755-2985 2397 E-mail: [info@gdksign.cn](mailto:info@gdksign.cn) Web: [www.gdksign.com](http://www.gdksign.com)

### 3.2 Radiated Emission

#### Limit

The setup of EUT is according with per ANSI C63.4-2014 measurement procedure. The specification used was with the FCC Part 18.305 Limit.

The external I/O cables were draped along the test table and formed a bundle 30 to 40 cm long in the middle.

The spacing between the peripherals was 10 cm.

Per FCC MP-5 2.2.5 The antenna height shall be set at around 2 meters

Radiated emission limits

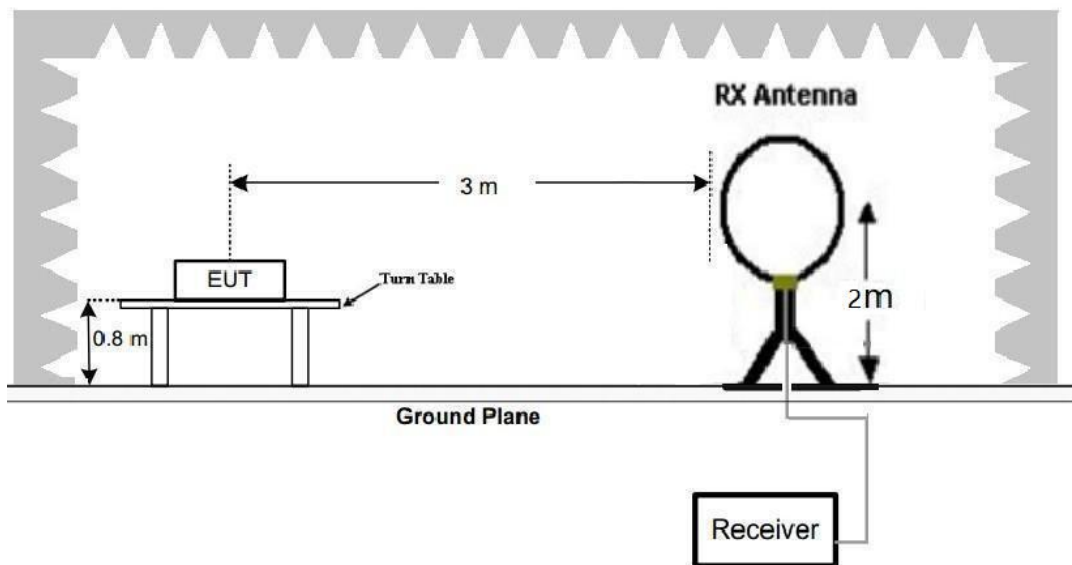
Frequency (MHz)	Test Distance (Meters)	Radiated (dB $\mu$ V/m)	Radiated ( $\mu$ V/m)
0.009-30	3	103.50	15 (at 300m)
30-1000	3	63.5	15 (at 300m)

Note: Emission level dBuV/m for 0.009-30MHz=20lg(15)+40lg(300/3)dbuv/m=103.5dbuv/m

Emission level dBuV/m for 30MHz-1000MHz=20lg(15)+20lg(300/3)dbuv/m=63.5dbuv/m

#### TEST CONFIGURATION

##### 1. Radiated Emission Test Set-Up, Frequency Below 30MHz

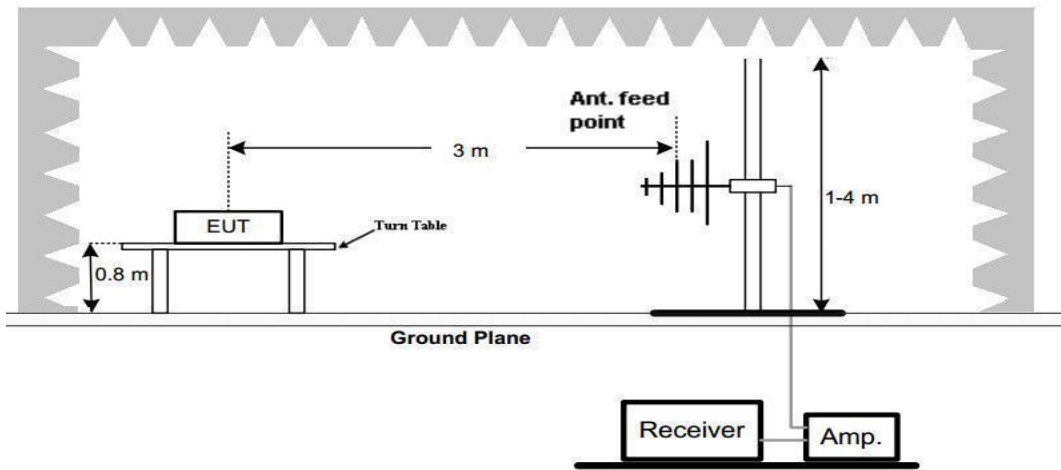


##### 2. Radiated Emission Test Set-Up, Frequency below 1000MHz

TRF No. FCC Part 18\_R2

Add: West Side of 1/F., Building C, Zone A, Fuyuan New Factory, Jiujiu Industrial Park, Minzhu, Shatou, Shajing, Bao'an District, Shenzhen, Guangdong, China

Tel: +(86) 0755-2985 2678 Fax: +(86) 0755-2985 2397 E-mail: [info@gdksign.cn](mailto:info@gdksign.cn) Web: [www.gdksign.com](http://www.gdksign.com)



**Test Procedure**

1. Below 1GHz measurement the EUT is placed on a turntable which is 0.8m above ground plane.
2. Maximum procedure was performed by raising the receiving antenna from 1m to 4m and rotating the turn table from 0° to 360° to acquire the highest emissions from EUT
3. And also, each emission was to be maximized by changing the polarization of receiving antenna both horizontal and vertical.
4. Repeat above procedures until all frequency measurements have been completed.
5. Radiated emission test frequency band from 9KHz to 1000MHz.
6. The distance between test antenna and EUT as following table states:

Test Frequency range	Test Antenna Type	Test Distance
9KHz-30MHz	Active Loop Antenna	3
30MHz-1GHz	Bilog Antenna	3

7. Setting test receiver/spectrum as following table states:

Test Frequency range	Test Receiver/Spectrum Setting	Detector
9KHz-30MHz	RBW=10KHz/VBW=30KHz, Sweep time=Auto	QP
30MHz-1GHz	RBW=100KHz/VBW=300KHz, Sweep time=Auto	QP

**TEST RESULTS**

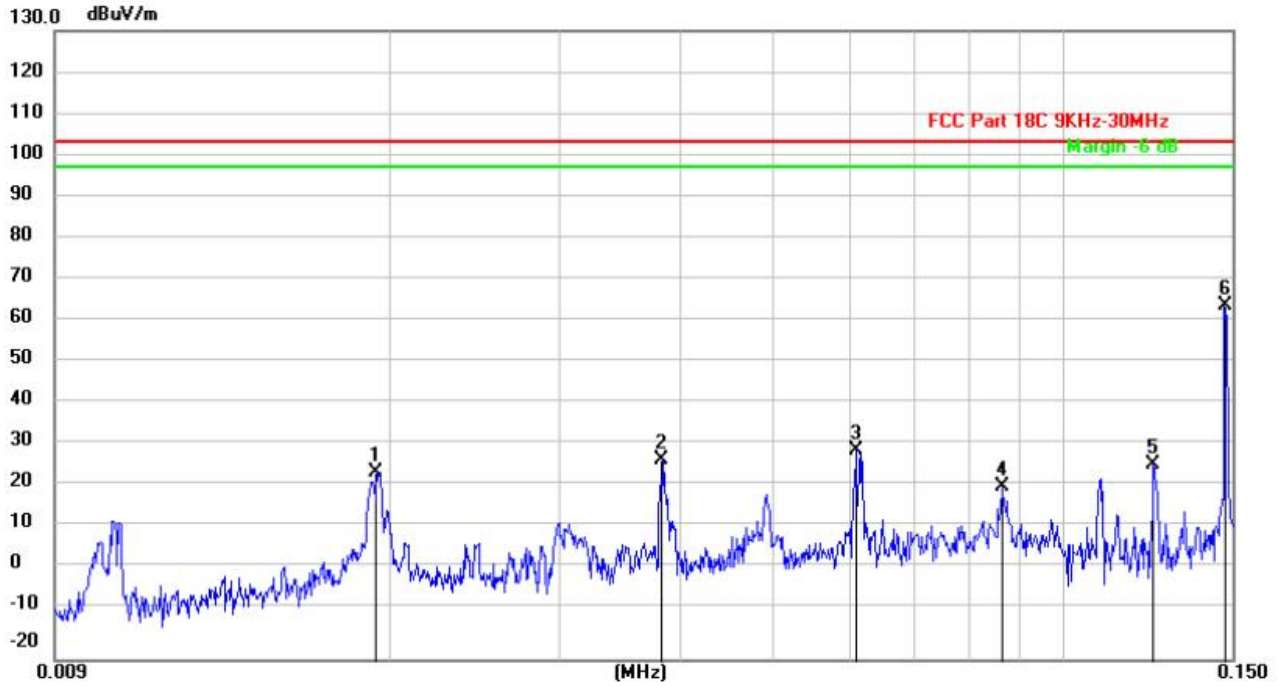
TRF No. FCC Part 18\_R2

Add: West Side of 1/F., Building C, Zone A, Fuyuan New Factory, Jiujiu Industrial Park, Minzhu, Shatou, Shajing, Bao'an District, Shenzhen, Guangdong, China

Tel: +(86) 0755-2985 2678 Fax: +(86) 0755-2985 2397 E-mail: [info@gdkesign.cn](mailto:info@gdkesign.cn) Web: [www.gdkesign.com](http://www.gdkesign.com)

For 9 KHz-150kHz

Face



No. Mk.	Freq. MHz	Reading Level (dBuV)	Correct Factor (dB/m)	Measure- ment (dBuV/m)	Limit (dBuV/m)	Over (dB)	Detector
1	0.0194	33.97	-9.05	24.92	103.50	-78.58	peak
2	0.0383	36.82	-8.92	27.90	103.50	-75.60	peak
3	0.0611	39.25	-9.13	30.12	103.50	-73.38	peak
4	0.0864	30.42	-8.99	21.43	103.50	-82.07	peak
5	0.1242	36.29	-9.48	26.81	103.50	-76.69	peak
6 *	0.1474	74.03	-9.38	64.65	103.50	-38.85	peak

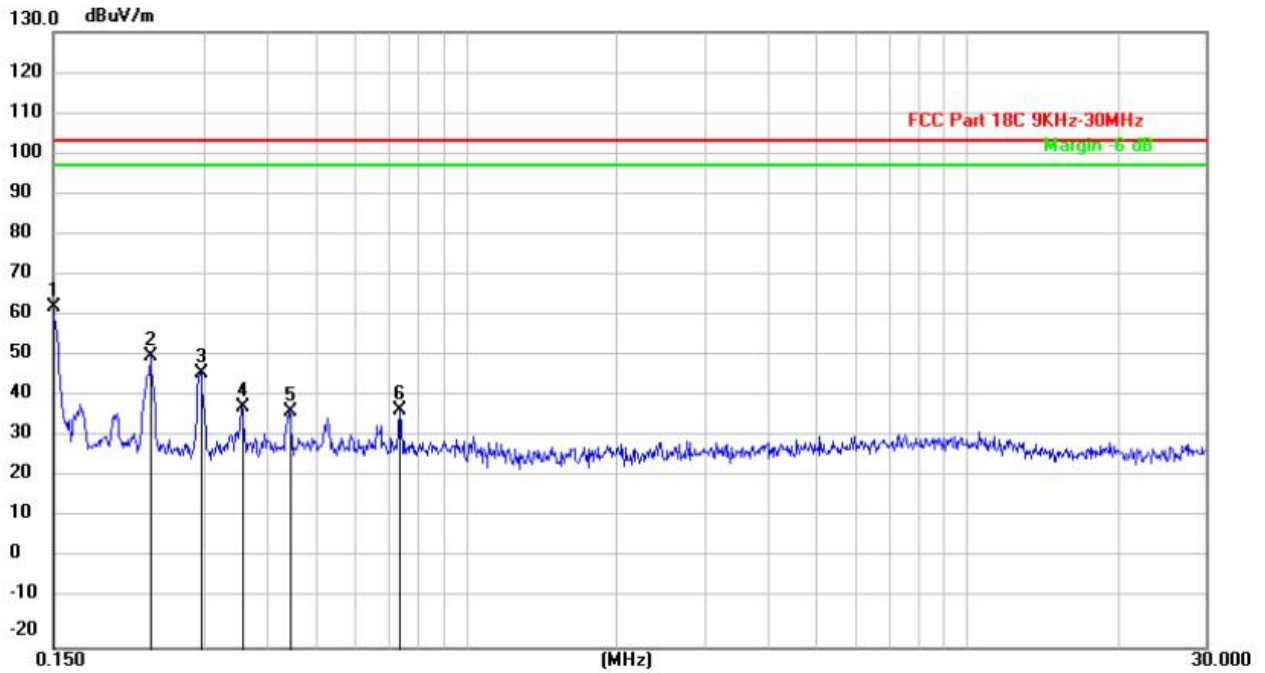
TRF No. FCC Part 18\_R2

Add: West Side of 1/F., Building C, Zone A, Fuyuan New Factory, Jiujiu Industrial Park, Minzhu, Shatou, Shajing, Bao'an District, Shenzhen, Guangdong, China

Tel: +(86) 0755-2985 2678 Fax: +(86) 0755-2985 2397 E-mail: [info@gdksign.cn](mailto:info@gdksign.cn) Web: [www.gdksign.com](http://www.gdksign.com)

For 150KHz-30MHz

Face



No.	Mk.	Freq. MHz	Reading Level (dBuV)	Correct Factor (dB/m)	Measure- ment (dBuV/m)	Limit (dBuV/m)	Over (dB)	Detector
1	*	0.1500	72.31	-9.33	62.98	103.50	-40.52	peak
2		0.2340	60.51	-9.30	51.21	103.50	-52.29	peak
3		0.2952	56.20	-9.29	46.91	103.50	-56.59	peak
4		0.3568	47.92	-9.26	38.66	103.50	-64.84	peak
5		0.4445	46.71	-9.24	37.47	103.50	-66.03	peak
6		0.7378	47.22	-9.16	38.06	103.50	-65.44	peak

Remark:

Correct Factor=Antenna Factor + Cable Loss -Preamplifier Factor

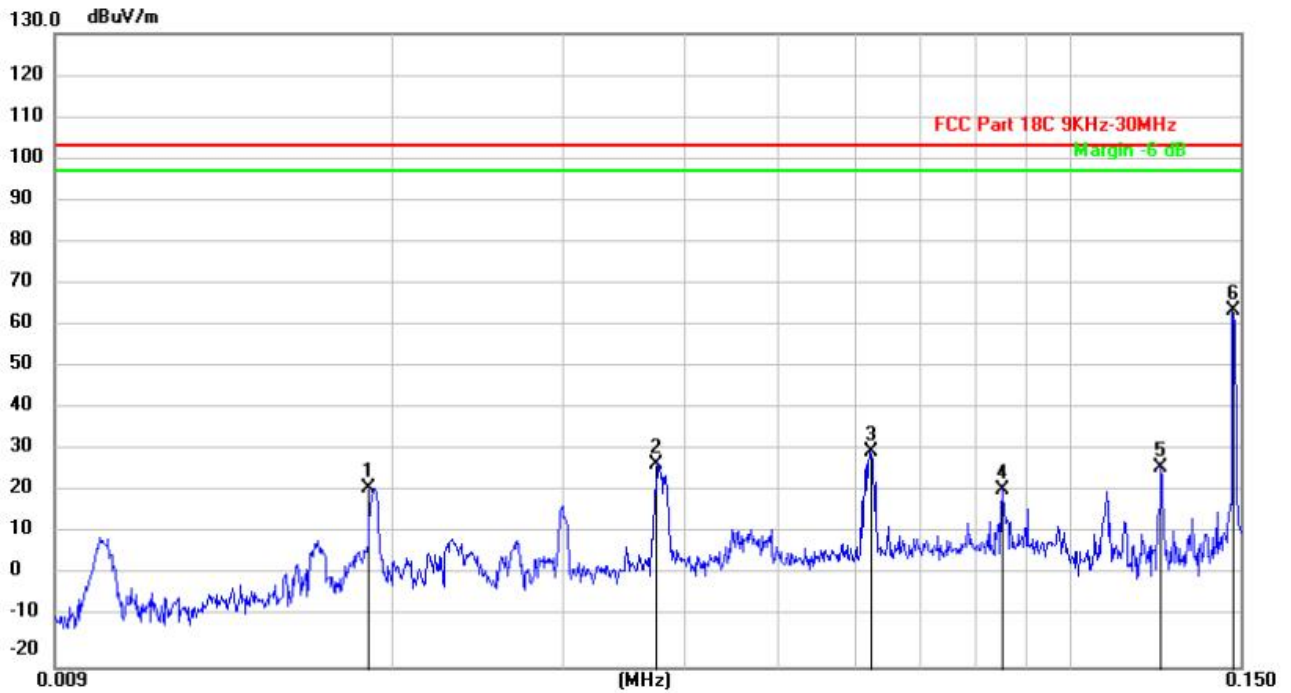
TRF No. FCC Part 18\_R2

Add: West Side of 1/F., Building C, Zone A, Fuyuan New Factory, Jiujiu Industrial Park, Minzhu, Shatou, Shajing, Bao'an District, Shenzhen, Guangdong, China

Tel: +(86) 0755-2985 2678 Fax: +(86) 0755-2985 2397 E-mail: [info@gdkesign.cn](mailto:info@gdkesign.cn) Web: [www.gdkesign.com](http://www.gdkesign.com)

For 9KHz-150KHz

Side



No.	Mk.	Freq. MHz	Reading Level (dBuV)	Correct Factor (dB/m)	Measure- ment (dBuV/m)	Limit (dBuV/m)	Over (dB)	Detector
1		0.0189	31.79	-9.06	22.73	103.50	-80.77	peak
2		0.0374	37.25	-8.92	28.33	103.50	-75.17	peak
3		0.0623	40.26	-9.17	31.09	103.50	-72.41	peak
4		0.0850	31.17	-9.02	22.15	103.50	-81.35	peak
5		0.1242	36.79	-9.48	27.31	103.50	-76.19	peak
6	*	0.1474	74.03	-9.38	64.65	103.50	-38.85	peak

TRF No. FCC Part 18\_R2

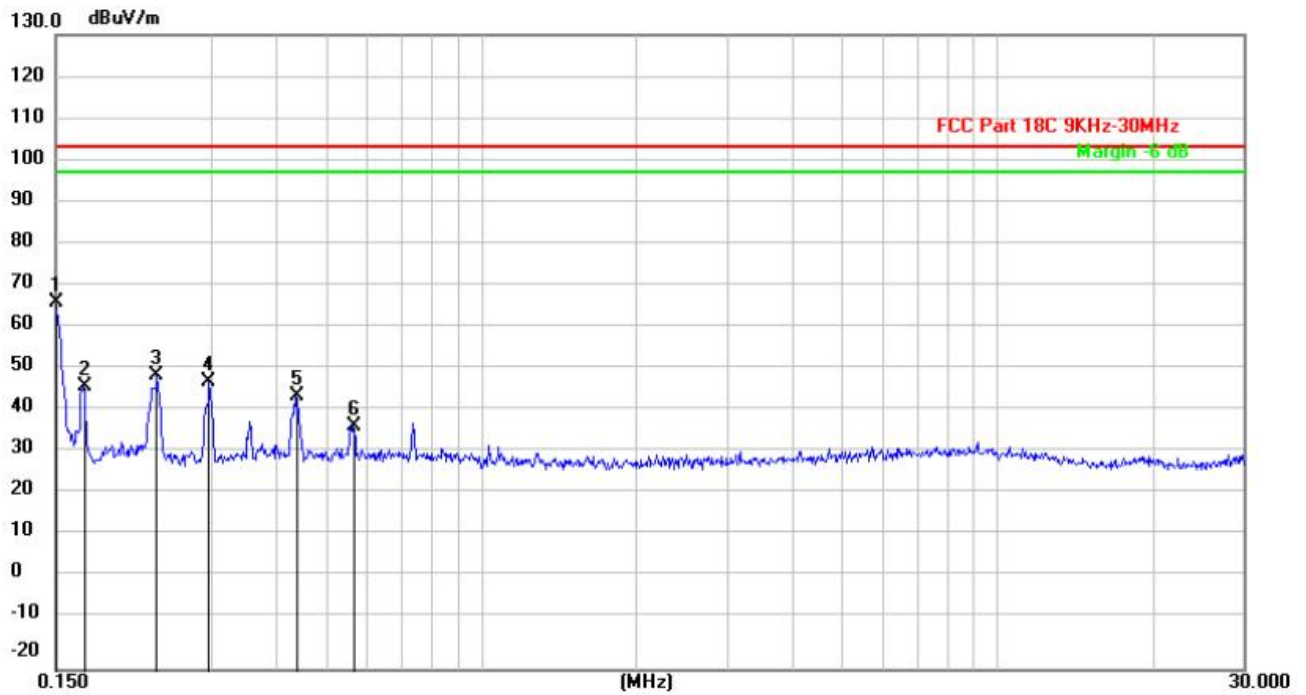
Add: West Side of 1/F., Building C, Zone A, Fuyuan New Factory, Jiujiu Industrial Park, Minzhu, Shatou, Shajing, Bao'an District, Shenzhen, Guangdong, China

Tel: +(86) 0755-2985 2678 Fax: +(86) 0755-2985 2397 E-mail: [info@gdksign.cn](mailto:info@gdksign.cn) Web: [www.gdksign.com](http://www.gdksign.com)



For 150KHZ-30MHZ

Side



No.	Mk.	Freq. MHz	Reading Level (dBuV)	Correct Factor (dB/m)	Measure- ment (dBuV/m)	Limit (dBuV/m)	Over (dB)	Detector
1	*	0.1500	76.14	-9.33	66.81	103.50	-36.69	peak
2		0.1695	56.40	-9.32	47.08	103.50	-56.42	peak
3		0.2353	59.04	-9.30	49.74	103.50	-53.76	peak
4		0.2968	57.34	-9.28	48.06	103.50	-55.44	peak
5		0.4395	54.01	-9.24	44.77	103.50	-58.73	peak
6		0.5655	46.73	-9.21	37.52	103.50	-65.98	peak

Remark:

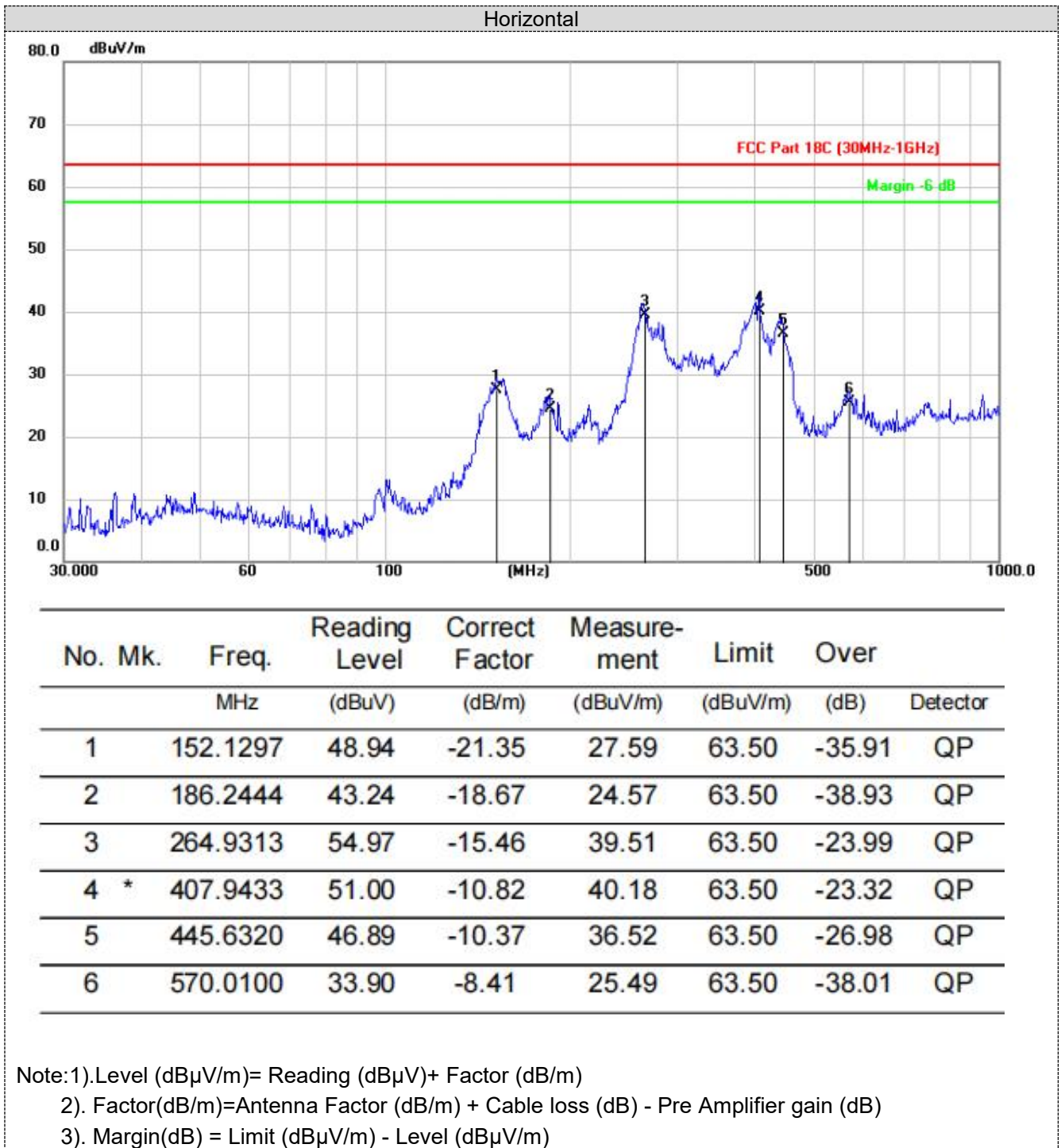
Correct Factor=Antenna Factor + Cable Loss -Preamplifier Factor

TRF No. FCC Part 18\_R2

Add: West Side of 1/F., Building C, Zone A, Fuyuan New Factory, Jiujiu Industrial Park, Minzhu, Shatou, Shajing, Bao'an District, Shenzhen, Guangdong, China

Tel: +(86) 0755-2985 2678 Fax: +(86) 0755-2985 2397 E-mail: [info@gdksign.cn](mailto:info@gdksign.cn) Web: [www.gdksign.com](http://www.gdksign.com)

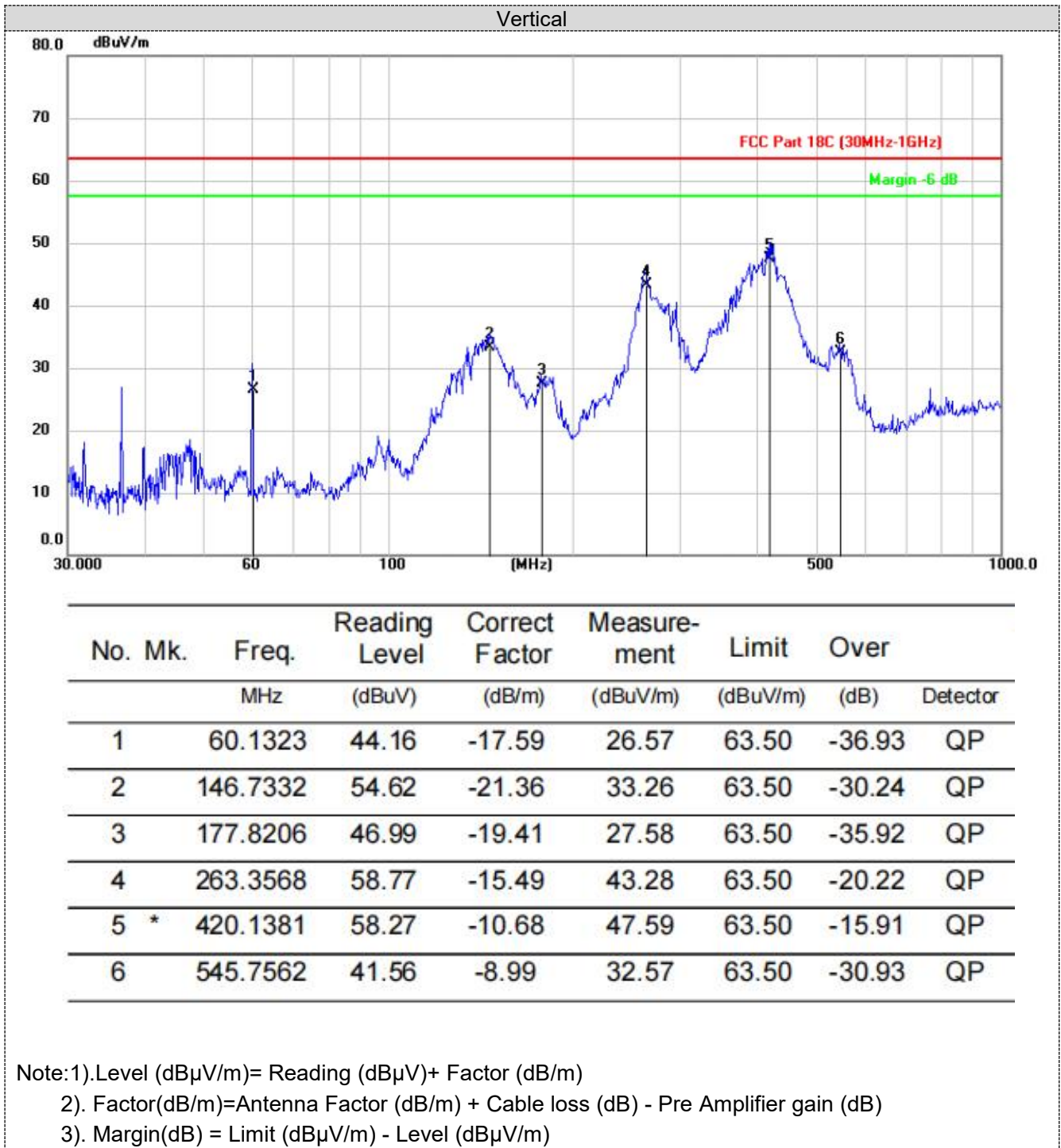
For 30MHz-1GHz



TRF No. FCC Part 18\_R2

Add: West Side of 1/F., Building C, Zone A, Fuyuan New Factory, Jiujiu Industrial Park, Minzhu, Shatou, Shajing, Bao'an District, Shenzhen, Guangdong, China

Tel: +(86) 0755-2985 2678 Fax: +(86) 0755-2985 2397 E-mail: [info@gdksign.cn](mailto:info@gdksign.cn) Web: [www.gdksign.com](http://www.gdksign.com)



TRF No. FCC Part 18\_R2

Add: West Side of 1/F., Building C, Zone A, Fuyuan New Factory, Jiujiu Industrial Park, Minzhu, Shatou, Shajing, Bao'an District, Shenzhen, Guangdong, China

Tel: +(86) 0755-2985 2678 Fax: +(86) 0755-2985 2397 E-mail: [info@gdksign.cn](mailto:info@gdksign.cn) Web: [www.gdksign.com](http://www.gdksign.com)

### 3.3 Antenna Requirement

**Refer to statement below for compliance.**

The manufacturer may design the unit so that the user can replace a broken antenna, but the use of a standard antenna jack or electrical connector is prohibited. Further, this requirement does not apply to intentional radiators that must be professionally installed.

**Antenna Information**

The antenna used in this product is a Coil Antenna, which permanently attached. It conforms to the standard requirements.

#### 4. Test Setup Photos of the EUT

Radiated Measurement (Below 30MHz)



Radiated Measurement (Above 30MHz)

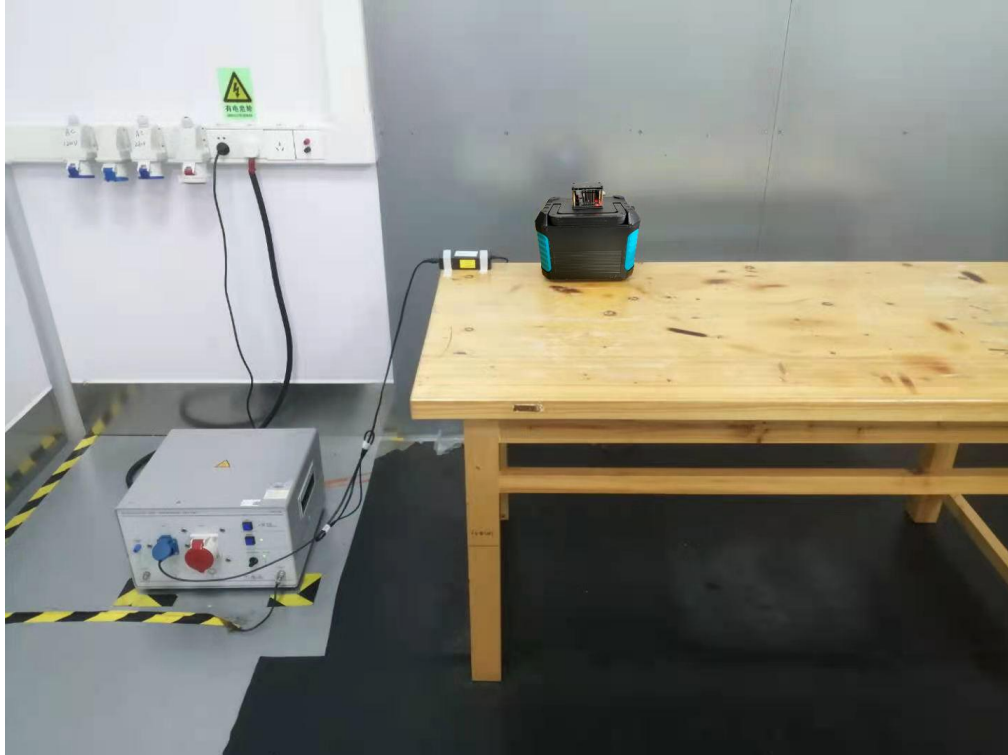


TRF No. FCC Part 18 R2

Add: West Side of 1/F., Building C, Zone A, Fuyuan New Factory, Jiujiu Industrial Park, Minzhu, Shatou, Shajing, Bao'an District, Shenzhen, Guangdong, China

Tel: +(86) 0755-2985 2678 Fax: +(86) 0755-2985 2397 E-mail: [info@gdksign.cn](mailto:info@gdksign.cn) Web: [www.gdksign.com](http://www.gdksign.com)

## Conducted Emission



TRF No. FCC Part 18\_R2

Add: West Side of 1/F., Building C, Zone A, Fuyuan New Factory, Jiujiu Industrial Park, Minzhu, Shatou, Shajing, Bao'an District, Shenzhen, Guangdong, China

Tel: +(86) 0755-2985 2678 Fax: +(86) 0755-2985 2397 E-mail: [info@gdksign.cn](mailto:info@gdksign.cn) Web: [www.gdksign.com](http://www.gdksign.com)

### 5. PHOTOS OF THE EUT



TRF No. FCC Part 18 R2

Add: West Side of 1/F., Building C, Zone A, Fuyuan New Factory, Jiujiu Industrial Park, Minzhu, Shatou, Shajing, Bao'an District, Shenzhen, Guangdong, China

Tel: +(86) 0755-2985 2678 Fax: +(86) 0755-2985 2397 E-mail: [info@gdksign.cn](mailto:info@gdksign.cn) Web: [www.gdksign.com](http://www.gdksign.com)



TRF No. FCC Part 18\_R2

Add: West Side of 1/F., Building C, Zone A, Fuyuan New Factory, Jiujiu Industrial Park, Minzhu, Shatou, Shajing, Bao'an District, Shenzhen, Guangdong, China

Tel: +(86) 0755-2985 2678 Fax: +(86) 0755-2985 2397 E-mail: [info@gdksign.cn](mailto:info@gdksign.cn) Web: [www.gdksign.com](http://www.gdksign.com)

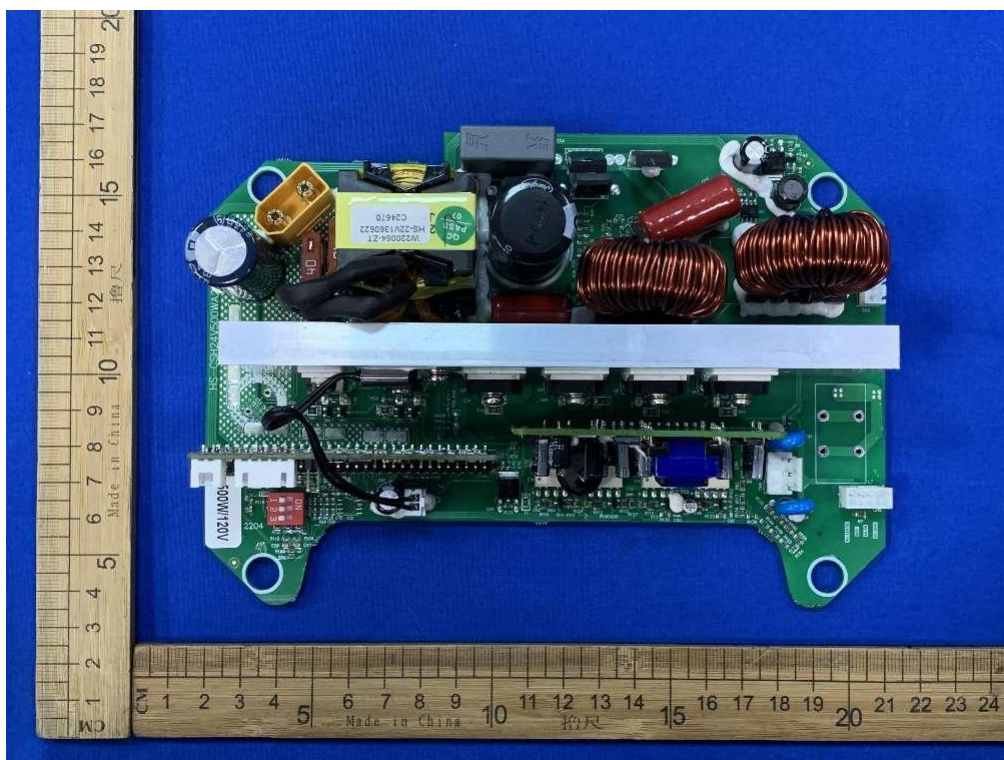
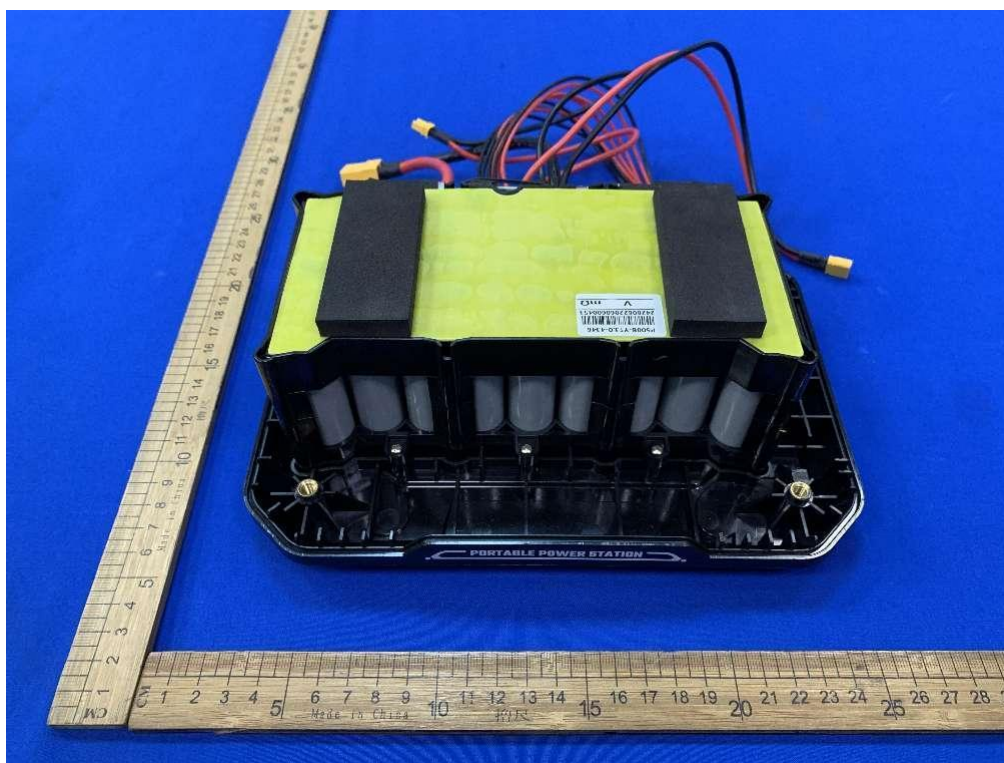




TRF No. FCC Part 18 R2

Add: West Side of 1/F., Building C, Zone A, Fuyuan New Factory, Jiujiu Industrial Park, Minzhu, Shatou, Shajing, Bao'an District, Shenzhen, Guangdong, China

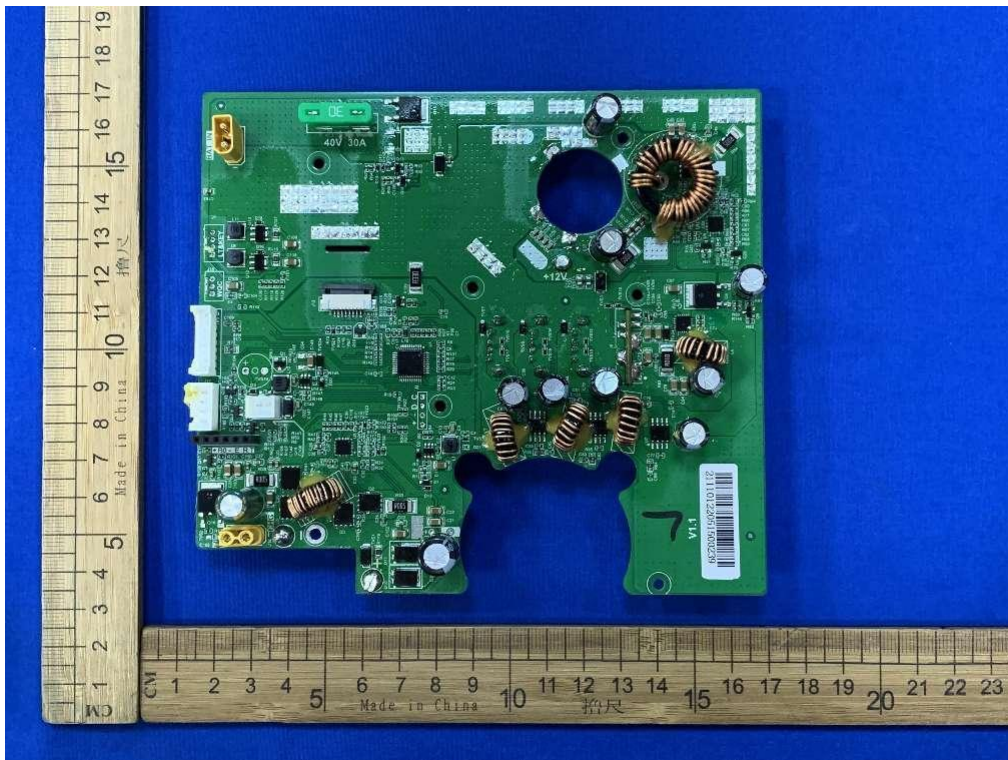
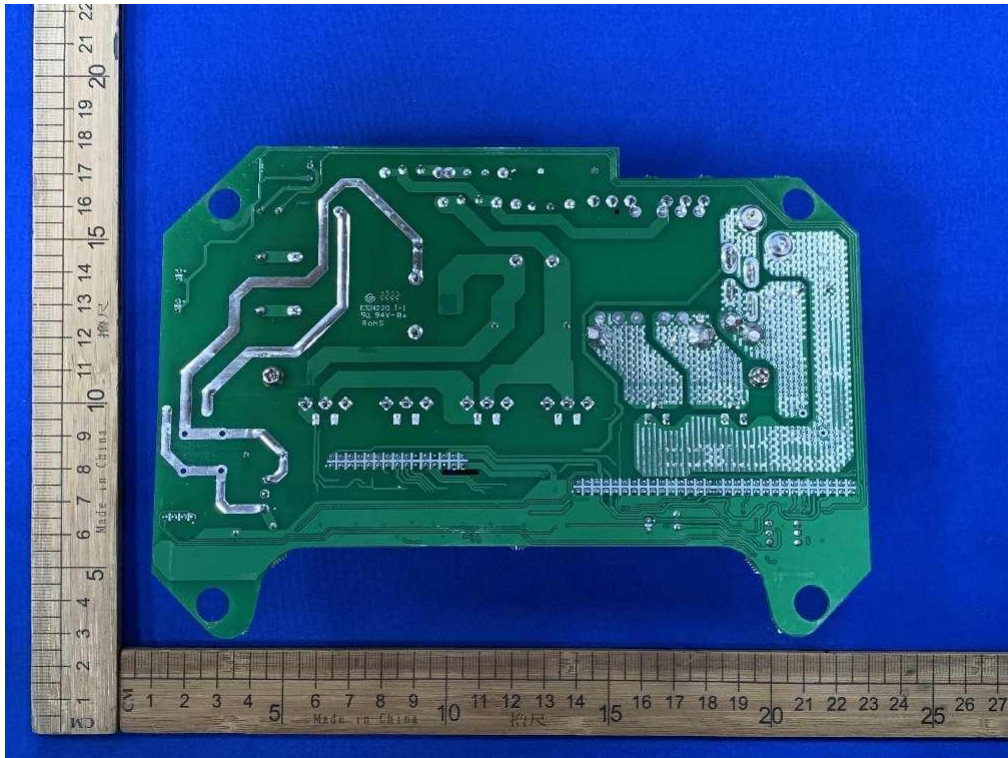
Tel: +(86) 0755-2985 2678 Fax: +(86) 0755-2985 2397 E-mail: [info@gdksign.cn](mailto:info@gdksign.cn) Web: [www.gdksign.com](http://www.gdksign.com)



TRF No. FCC Part 18 R2

Add: West Side of 1/F., Building C, Zone A, Fuyuan New Factory, Jiujiu Industrial Park, Minzhu, Shatou, Shajing, Bao'an District, Shenzhen, Guangdong, China

Tel: +(86) 0755-2985 2678 Fax: +(86) 0755-2985 2397 E-mail: [info@gdksign.cn](mailto:info@gdksign.cn) Web: [www.gdksign.com](http://www.gdksign.com)

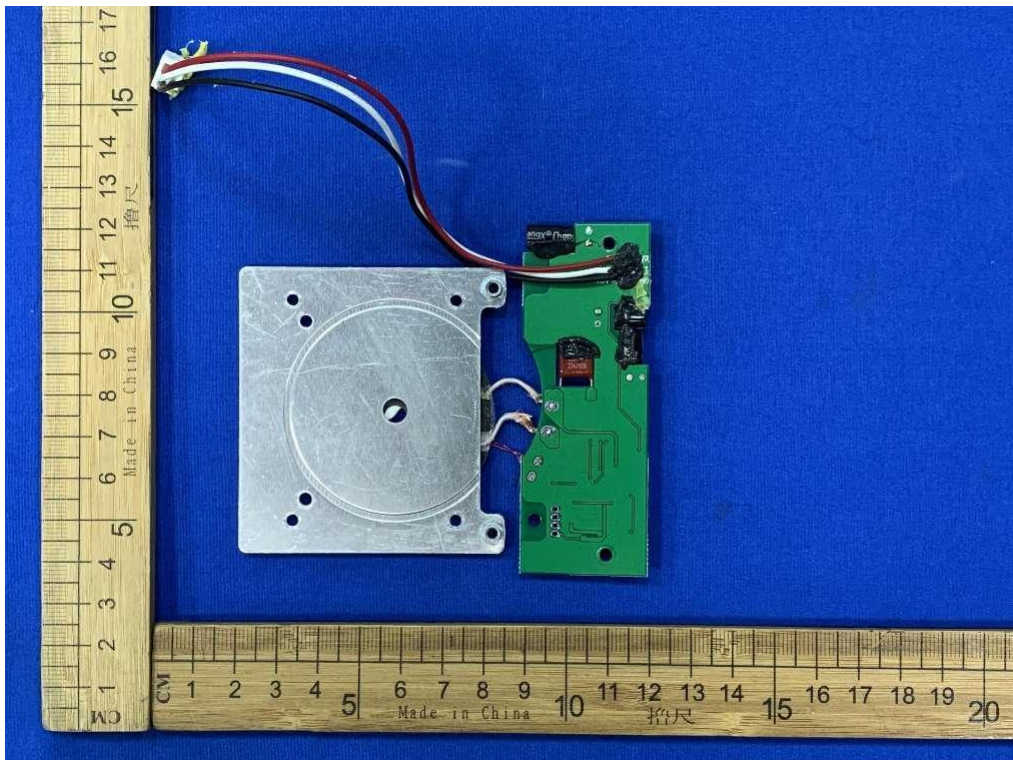
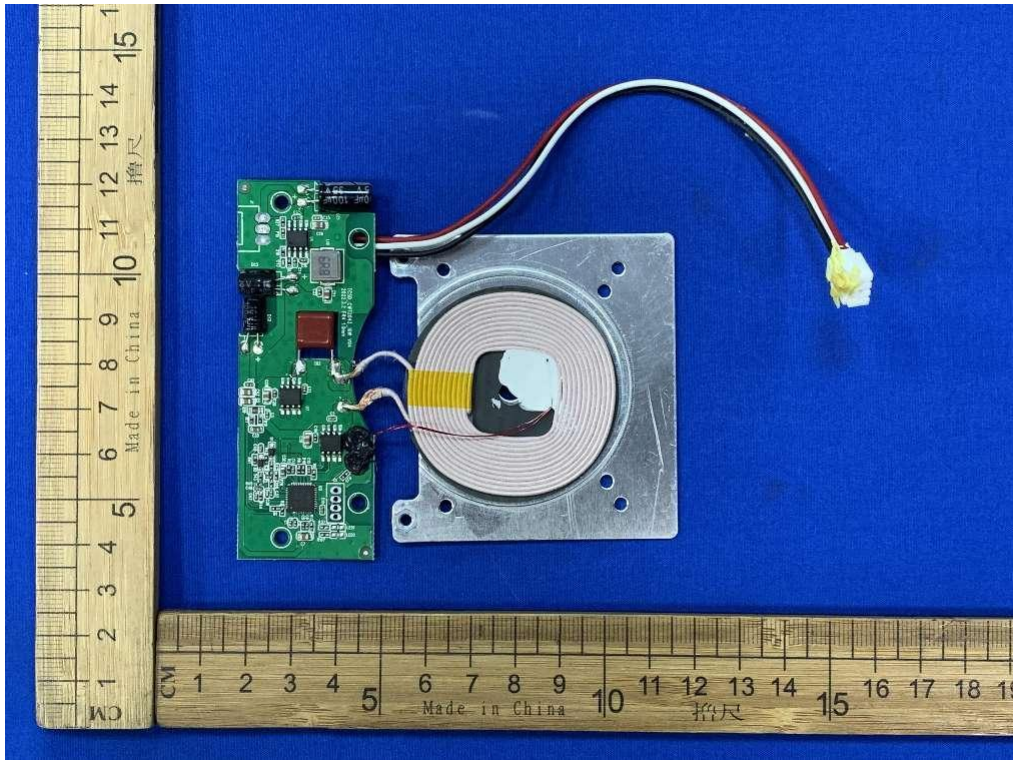


TRF No. FCC Part 18 R2

Add: West Side of 1/F., Building C, Zone A, Fuyuan New Factory, Jiujiu Industrial Park, Minzhu, Shatou, Shajing, Bao'an District, Shenzhen, Guangdong, China

Tel: +(86) 0755-2985 2678 Fax: +(86) 0755-2985 2397 E-mail: [info@gdkesign.cn](mailto:info@gdkesign.cn) Web: [www.gdkesign.com](http://www.gdkesign.com)

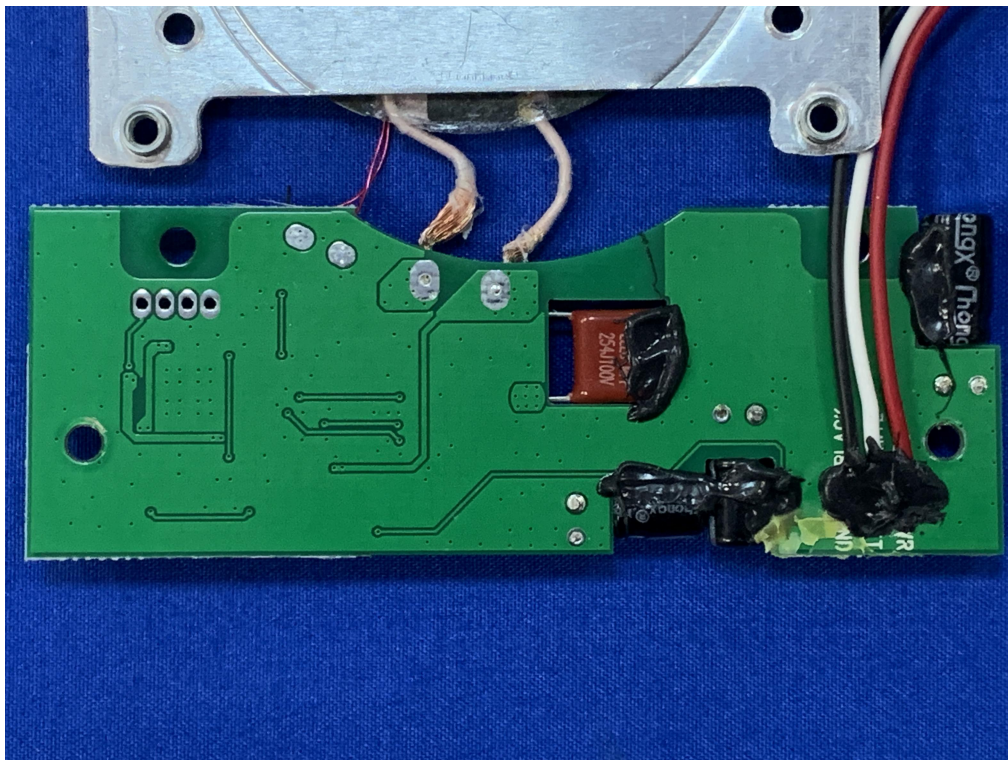
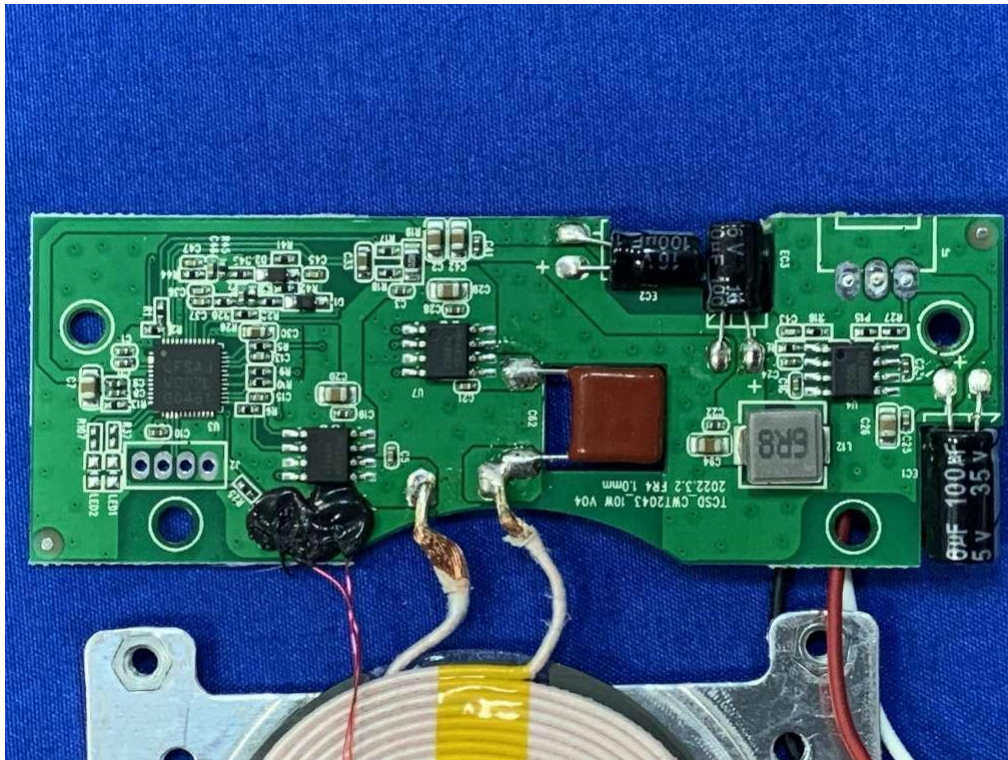




TRF No. FCC Part 18 R2

Add: West Side of 1/F., Building C, Zone A, Fuyuan New Factory, Jiujiu Industrial Park, Minzhu, Shatou, Shajing, Bao'an District, Shenzhen, Guangdong, China

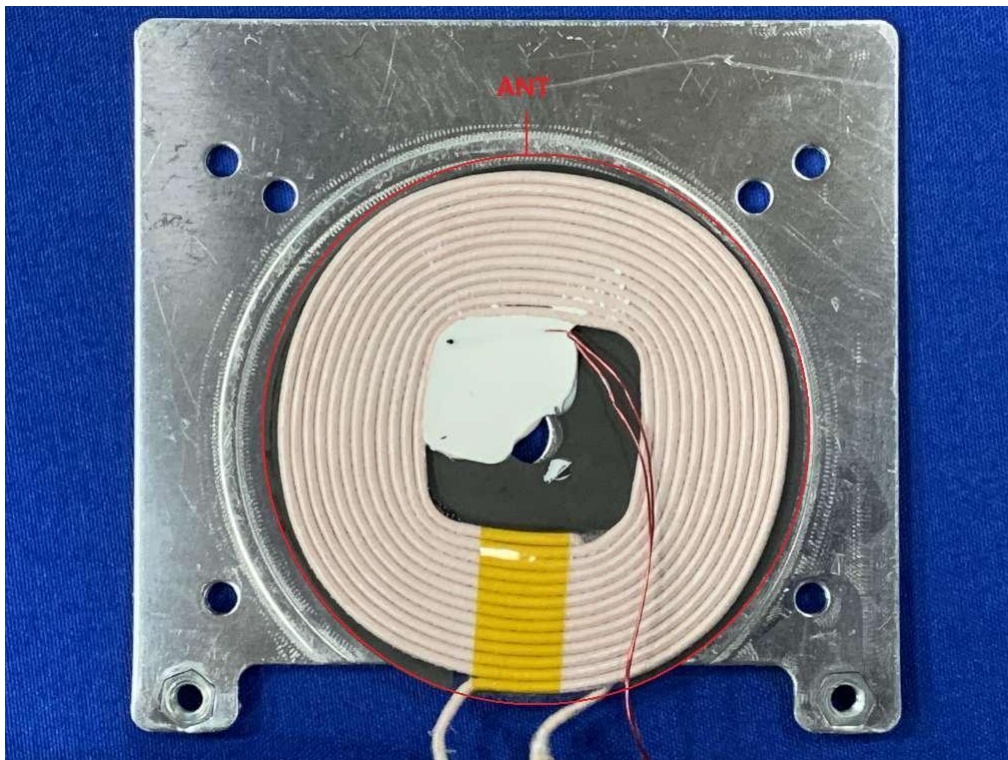
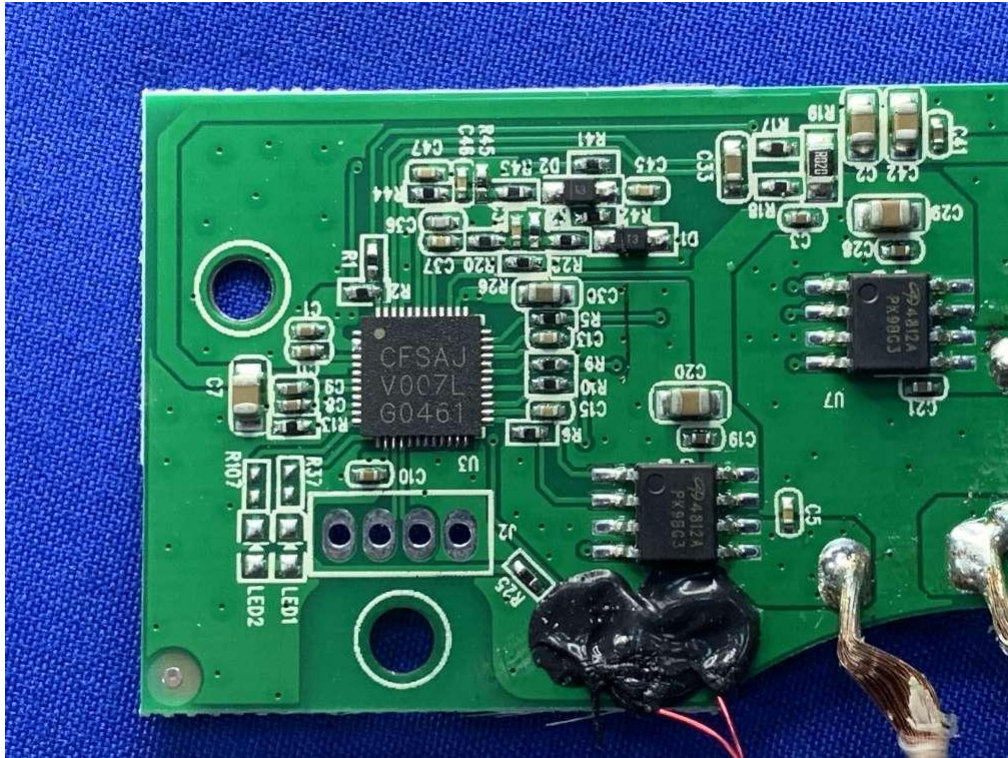
Tel: +(86) 0755-2985 2678 Fax: +(86) 0755-2985 2397 E-mail: [info@gdksign.cn](mailto:info@gdksign.cn) Web: [www.gdksign.com](http://www.gdksign.com)



TRF No. FCC Part 18 R2

Add: West Side of 1/F., Building C, Zone A, Fuyuan New Factory, Jiujiu Industrial Park, Minzhu, Shatou, Shajing, Bao'an District, Shenzhen, Guangdong, China

Tel: +(86) 0755-2985 2678 Fax: +(86) 0755-2985 2397 E-mail: [info@gdksign.cn](mailto:info@gdksign.cn) Web: [www.gdksign.com](http://www.gdksign.com)



\*\*\*\*\* End of Report \*\*\*\*\*

TRF No. FCC Part 18 R2

Add: West Side of 1/F., Building C, Zone A, Fuyuan New Factory, Jiujiu Industrial Park, Minzhu, Shatou, Shajing, Bao'an District, Shenzhen, Guangdong, China

Tel: +(86) 0755-2985 2678 Fax: +(86) 0755-2985 2397 E-mail: [info@gdksign.cn](mailto:info@gdksign.cn) Web: [www.gdksign.com](http://www.gdksign.com)