

100mm

140mm

操作说明

BT18多媒体播放器



非常感谢您选择BT18音箱。使用前请仔细阅读本说明书，正确操作，更好地发挥产品的优越性能。

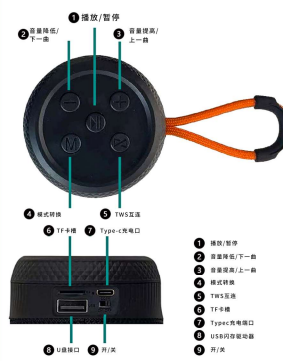
产品特点:

- 1: 蓝牙播放
- 2: 免提通话
- 3: 炫彩灯光

产品参数:

最大输出功率3W
 额定电压:5V
 内置锂电池:18650/1200mah
 蓝牙频率:2.408GHZ-2.480GHZ
 充电电压:DV-5V1A

功能按钮的使用方法



注意事项:

- 1: 请在室温环境下储存和使用本产品
- 2: 请勿自行拆卸、维修或修改本产品
- 3: 不要将本产品暴露在雨水或潮湿的环境中
- 4: 该产品配备了内置电池。请不要丢弃或放置在火灾中，以免发生危险!

Operation instructions

BT18 Multimedia Player



Thank you very much for choosing a Bluetooth speaker. Please read the manual carefully before use, operate it correctly, and better utilize the superior performance of the product.

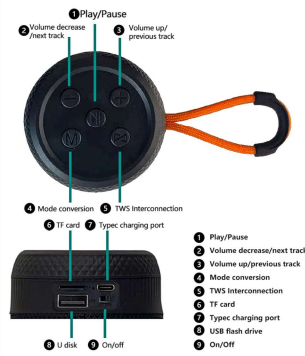
Product features:

- 1: Bluetooth playback
- 2: Handsfree call
- 3: Colorful Cool Lights

Product parameters:

Maximum output power: 3W
 Rated voltage: 5V
 Built in lithium battery: 18650/1200mah
 Bluetooth frequency: 2.408GHZ-2.480GHz
 Charging voltage: DV-5V 1A

How to use function buttons



Precautions:

- 1: Please store and use this product in a room temperature environment
- 2: Do not disassemble, repair, or modify this product on your own
- 3: Do not expose this product to rain or damp environments
- 4: The product is equipped with a built-in lithium battery. Please do not discard or place it in a fire to avoid danger!

FCC Statement

This equipment has been tested and found to comply with the limits for a Class B digital device, pursuant to part 15 of the FCC Rules. These limits are designed to provide reasonable protection against harmful interference in a residential installation. This equipment generates, uses and can radiate radio frequency energy and, if not installed and used in accordance with the instructions, may cause harmful interference to radio communications. However, there is no guarantee that interference will not occur in a particular installation. If this equipment does cause harmful interference to radio or television reception, which can be determined by turning the equipment off and on, the user is encouraged to try to correct the interference by one or more of the following measures:

- Reorient or relocate the receiving antenna.
- Increase the separation between the equipment and receiver.
- Connect the equipment into an outlet on a circuit different from that to which the receiver is connected.
- Consult the dealer or an experienced radio/TV technician for help.

Caution: Any changes or modifications to this device not explicitly approved by manufacturer could void your authority to operate this equipment.

This device complies with part 15 of the FCC Rules. Operation is subject to the following two conditions: (1) This device may not cause harmful interference, and (2) this device must accept any interference received, including interference that may cause undesired operation.

RF Exposure Information

The device has been evaluated to meet general RF exposure requirement. The device can be used in portable exposure condition without restriction.