

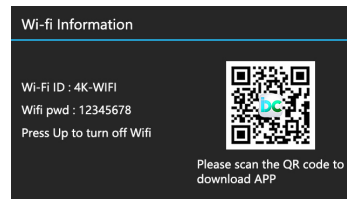
Connect to the iDC CAM app

Using the camera's built-in Wi-Fi allows you to operate the camera (take photos/videos) and easily download photos/videos from the camera to your smartphone.

Download the app and connect the camera's Wi-Fi network

After the camera is turned on, press the menu button to enter the menu, then press the left/right button to switch to system settings, then press the up/down button to find the "Wireless Hotspot" submenu and press the M button to turn on Wi-Fi. Then Wi-Fi ID and password will be displayed on the camera screen.

Use your phone to scan the QR code on the camera screen to download the app.



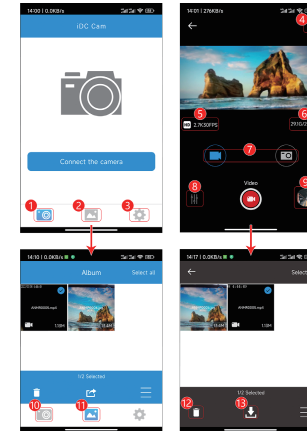
On your smartphone, go to Settings—WLAN—4K_WIFI and enter the password according to the camera screen.

Note: The camera's Wi-Fi cannot access social networks, only for smartphones to access the camera.

System requirement (of smartphone):

* Android 6.0 or higher is required

* iOS 8.0 or higher is required



- 1: Click through the APP to view the live view and operate the camera
- 2: View images/videos downloaded to your smartphone from the app
- 3: System Settings
- 4: Camera Settings
- 5: When pixel/resolution
- 6: The remaining storage space of the memory card
- 7: Switch the shooting mode of the camera
- 8: Switch the pixel/resolution of the current mode
- 9: View images/videos saved on the camera
- 10: Delete images/videos downloaded from the app to your smartphone
- 11: Share images/videos downloaded from the app to your smartphone to social software
- 12: Delete images/videos from the camera
- 13: Download images/videos from the camera to your smartphone

70*100mm, 200克铜版纸双面印刷

Warning:

Changes or modifications to this unit not expressly approved by the party responsible for compliance could void the user's authority to operate the equipment.

NOTE:

This device complies with part 15 of the FCC Rules. Operation is subject to the following two conditions: (1) This device may not cause harmful interference, and (2) this device must accept any interference received, including interference that may cause undesired operation.

FCC Statement:

This equipment has been tested and found to comply with the limits for a Class B digital device, pursuant to part 15 of the FCC Rules. These limits are designed to provide reasonable protection against harmful interference in a residential installation. This equipment generates, uses and can radiate radio frequency energy and, if not installed and used in accordance with the instructions, may cause harmful interference to radio communications. However, there is no guarantee that interference will not occur in a particular installation. If this equipment does cause harmful interference to radio or television reception, which can be determined by turning the equipment off and on, the user is encouraged to try to correct the interference by one or more of the following measures:

- Reorient or relocate the receiving antenna.
- Increase the separation between the equipment and receiver.
- Connect the equipment into an outlet on a circuit different from that to which the receiver is connected.
- Consult the dealer or an experienced radio/TV technician for help.

70*100mm, 200克铜版纸双面印刷