

Product function introduction

Wireless transmission brings a more convenient connection experience and greatly enhances the owner's experience of using Car Play.

Product specification parameters

Power input: 5V 1~2.1A

Product Power: 0.15W

Output Resolution: Adaptive

Compatible car models and iPhone devices

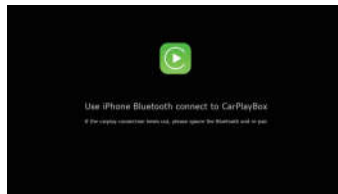
Search for the compatible models:

<https://www.apple.com/ios/carplay/available-models/>

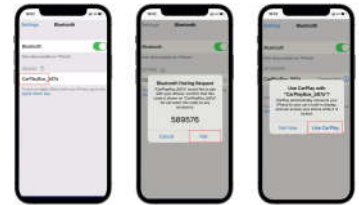
Support iPhone 6 and later models, software version iOS 10 or above.

Product connection

If the factory car supports CarPlay connection via USB cable, please plug the product into the USB port in the car. Such USB ports may be marked with CarPlay car icon or smartphone icon. Select CarPlay function in the car system, it will enter the following interface.



Make sure your iPhone's Bluetooth and Wi-Fi features are turned on and no other in-car devices are connected. On your iPhone, go to "Settings" > "Bluetooth", in Other Devices list, you will see a Bluetooth device name starting with CarPlayBox, tap to pair, allow permission and tap Use CarPlay to Connect wirelessly.



FCC Statement

This equipment has been tested and found to comply with the limits for a Class B digital device, pursuant to part 15 of the FCC Rules. These limits are designed to provide reasonable protection against harmful interference in a residential installation. This equipment generates, uses and can radiate radio frequency energy and, if not installed and used in accordance with the instructions, may cause harmful interference to radio communications. However, there is no guarantee that interference will not occur in a particular installation. If this equipment does cause harmful interference to radio or television reception, which can be determined by turning the equipment off and on, the user is encouraged to try to correct the interference by one or more of the following measures:

- Reorient or relocate the receiving antenna.
- Increase the separation between the equipment and receiver.
- Connect the equipment into an outlet on a circuit different from that to which the receiver is connected.
- Consult the dealer or an experienced radio/TV technician for help.

Caution: Any changes or modifications to this device not explicitly approved by manufacturer could void your authority to operate this equipment.

This device complies with part 15 of the FCC Rules. Operation is subject to the following two conditions: (1) This device may not cause harmful interference, and (2) this device must accept any interference received, including interference that may cause undesired operation.

RF Exposure Information

The device has been evaluated to meet general RF exposure requirement. The device can be used in portable exposure condition without restriction.