

## 1. Antenna Description:

|                 |                          |
|-----------------|--------------------------|
| Antenna type    | PIFA antenna             |
| Model           | WCPAA-DUAL-5.1           |
| Frequency range | 5745-5825MHz             |
| Manufacturer    | Promaster Electronic LLC |
| ANT Peak Gain   | 1.06 dBi                 |

## 2. Antenna Photo:

Length: 8.29mm  
Width: 3.24mm



### 3. Test Equipment & Conditions

#### 3.1 Test instrument

VSWR is tested using Agilent E5071B connected to a hand mechanism, and the status is free space.

#### 3.2 Test environment and methods

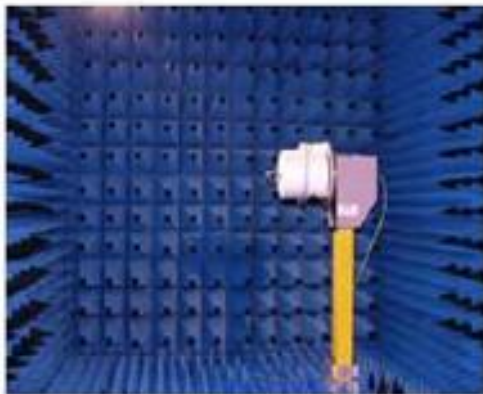
Dark room specifications: ETS-743

TD-SCDMA test equipment: StarPoint SP6010/Agilent 8960

LTE-TDD/FDD-SCDMA test equipment: StarPoint SP8011/CMW500

WCDMA/GSM/CDMA test equipment: Agilent 8960

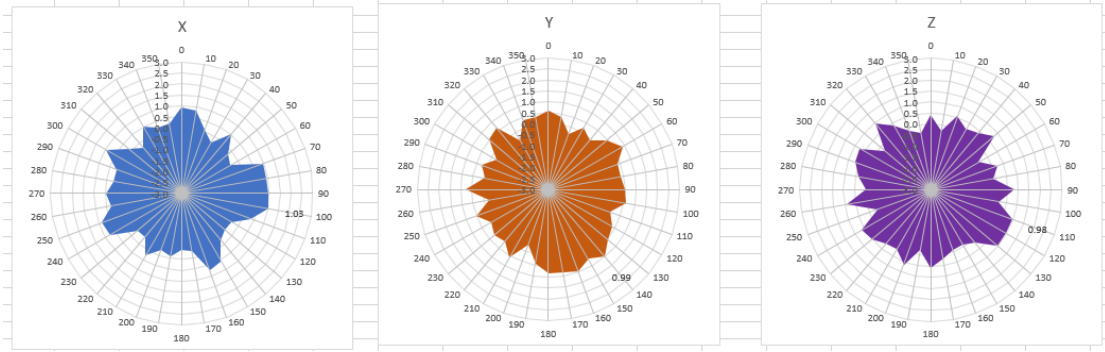
Passive efficiency testing equipment: Agilent Technologies E5071B



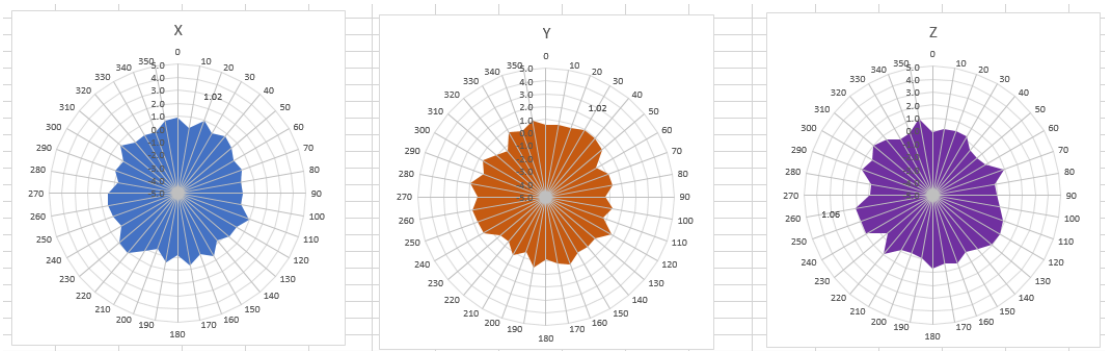
### 4 . Antenna Radiation Pattern



# 5745MHz



# 5785MHz



# 5825MHz

