

76.2mm

76.2mm

Version update description

After connecting to wireless CarPlay, scan this QR code with your camera or enter 192.168.2.1 in safari to update firmware.

Note that some head units cut off the power to the USB adapter while updating and leaving the process stuck at 1%. If this is the case please connect the adapter to a USB port with constant power supply, such as a computer port.



Must connect to WiFi if you need to connect to a constant power supply using the password: 88888888

Note: You need an iPhone and open mobile data function to update the firmware.

Troubleshooting your USB Adapter?

Scan this QR code in order to help you.



Model: WCPAA-2
FCC: 2A6P9-WCPAA-2

customerservice@promasterelectronic.com



AutoSky

Wireless USB Adapter

The keys to wireless

User manual

Product function introduction

Your **AutoSky** box is designed to convert wired CarPlay to wireless CarPlay or Android Auto.

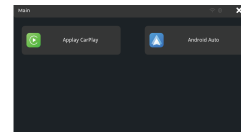
Compatible vehicles & devices

Most vehicles with built-in CarPlay.

Iphone 6 and later models, smartphones with Android 11 or newer with 5GHz Wi-Fi Frequency Band; Google: Pixel /XL, Pixel 2/2 XL, Pixel 3/3 XL/3a/3a XL, Pixel 4/4 XL/4a, Pixel 5, Pixel 6/6 Pro, Nexus 5X, Nexus 6P; and Samsung: Galaxy S8/S8+, S9/S9+, S20/S20+/S20 Ultra, S21/S21+/S21 Ultra.

General instructions

Plug the device into the vehicle's USB port usually marked with CarPlay or Android Auto. On smartphone, select the CarPlay in the original car radio system, you will be redirected to the following interface:



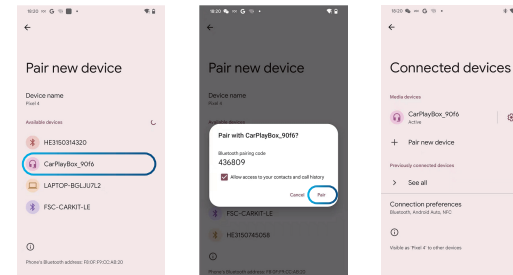
Product specifications

Input Power: USB 5V
Connectivity: WiFi & Bluetooth

How to use Wireless Android Auto

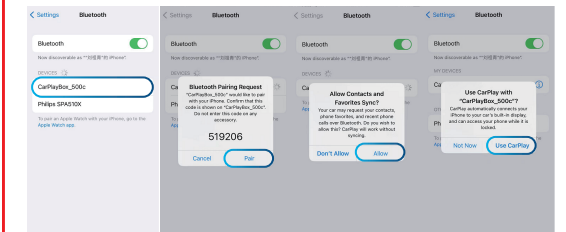
Before using Android Auto, please make sure you have the latest Android Auto App installed.

- Enable "Wireless Android Auto" in Android Auto settings
- Turn on Wi-Fi and Bluetooth, search on Bluetooth "AutoSkyBox-xxxxx" and tap to pair
- It will connect wirelessly to Android Auto automatically.



How to use Wireless CarPlay

- Turn on your iPhone's WiFi and Bluetooth, then pair to the Bluetooth named "AutoSkyBox-xxxx"
- Tap *Pair* -> *Allow* -> *Use CarPlay* on the pop-up windows
- It will connect wirelessly to CarPlay automatically.



Note! Before pairing to a new iPhone / Android smartphone, please disconnect the currently connected phone from WiFi and Bluetooth.

FCC Warning:

This equipment has been tested and found to comply with the limits for a Class B digital device, pursuant to part 15 of the FCC Rules. These limits are designed to provide reasonable protection against harmful interference in a residential installation. This equipment generates, uses and can radiate radio frequency energy and, if not installed and used in accordance with the instructions, may cause harmful interference to radio communications. However, there is no guarantee that interference will not occur in a particular installation. If this equipment does cause harmful interference to radio or television reception, which can be determined by turning the equipment off and on, the user is encouraged to try to correct the interference by one or more of the following measures:

- Reorient or relocate the receiving antenna.
- Increase the separation between the equipment and receiver.
- Connect the equipment into an outlet on a circuit different from that to which the receiver is connected.
- Consult the dealer or an experienced radio/TV technician for help.

Caution: Any changes or modifications to this device not explicitly approved by manufacturer could void your authority to operate this equipment.

This device complies with part 15 of the FCC Rules. Operation is subject to the following two conditions:

(1) This device may not cause harmful interference, and (2) this device must accept any interference received, including interference that may cause undesired operation.

This equipment complies with FCC radiation exposure limits set forth for an uncontrolled environment. This equipment should be installed and operated with minimum distance 20cm between the radiator and your body.