

## Version update description

Connect your Wireless CPAA Adapter to a mobile phone charger as shown below.



Use your mobile phone charger



Do not update your adapter by connecting it to the CarPlay port it may get stuck at 1%

Scan the QR Code with your camera or enter 192.168.3.1 in Safari to update the firmware. ***This action is not recommended if your adapter is working properly.***



Once you plug in your adapter connect it through your WiFi using the password: **8888888**

**Note: You need an iPhone and open mobile data function to update the firmware.**

## Troubleshooting?

Scan this QR code in order to help you.



**Model:** CPAAC-1  
**FCC ID:** 2A6P9-NCPAA

✉ [customerservice@promasterelectronic.com](mailto:customerservice@promasterelectronic.com)

This device complies with part 15 of the FCC Rules. Operation is subject to the following two conditions: (1) This device may not cause harmful interference, and (2) this device must accept any interference received, including interference that may cause undesired operation.



# AutoSky

**Wireless CP&AA adaptor**  
SMART CONNECT - NANO SERIES

The key to wireless  
**User Manual**

## Product function introduction

Wireless transmission brings a more convenient connection experience and greatly enhances the owner's experience of using CarPlay.

## Product specification parameters

Power input: 5V 1~2.1A    Product Power: 0.15W

Output Resolution: Adaptive

## Compatibility

**Your car must have Wired CarPlay** (typically in cars 2016 or newer). Search for compatible car models: <https://www.apple.com/ios/carplay/available-models/>

**This adapter does not add CarPlay to your car, it only converts Wired CarPlay to Wireless.**

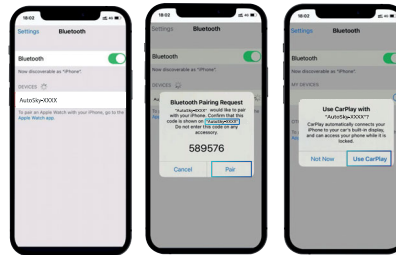
You need an iPhone 6 or newer with iOS 10 or later software version.

## Product connection

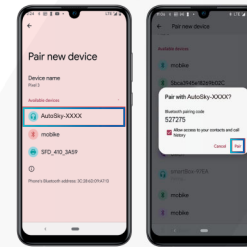
- 1 Connect your CPAA Adapter to your car's USB port.



- 2 Turn on your iPhone or Android Phone's Bluetooth, depending on the case, and select: "AutoSky-XXXX". Allow pairing, syncing, and choose the use of CarPlay or Android Auto as appropriate.



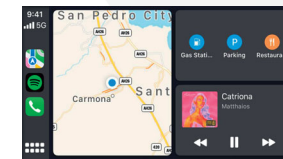
For iPhone



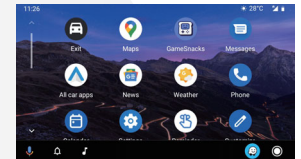
For Android

- 3 Select CarPlay or Android Auto according to your mobile phone brand, your adapter will recognize your device from your bluetooth connection.

- 4 Once the connection is successful your CarPlay or Android Auto interface will be displayed on your screen and it will automatically reconnect each time.



Carplay



Android Auto

## **FCC Statement**

This equipment has been tested and found to comply with the limits for a Class B digital device, pursuant to Part 15 of the FCC Rules.

These limits are designed to provide reasonable protection against harmful interference in a residential installation. This equipment generates uses and can radiate radio frequency energy and, if not installed and used in accordance with the instructions, may cause harmful interference to radio communications. However, there is no guarantee that interference will not occur in a particular installation. If this equipment does cause harmful interference to radio or television reception, which can be determined by turning the equipment off and on, the user is encouraged to try to correct the interference by one or more of the following measures:

- Reorient or relocate the receiving antenna.
- Increase the separation between the equipment and receiver.
- Connect the equipment into an outlet on a circuit different from that to which the receiver is connected.
- Consult the dealer or an experienced radio/TV technician for help.

This device complies with part 15 of the FCC Rules. Operation is subject to the following two conditions:(1) This device may not cause harmful interference, and (2) this device must accept any interference received, including interference that may cause undesired operation.

Any Changes or modifications not expressly approved by the party responsible for compliance could void the user's authority to operate the equipment.

This equipment complies with FCC radiation exposure limits set forth for an uncontrolled environment. This equipment should be installed and operated with minimum distance 20cm between the radiator & your body.