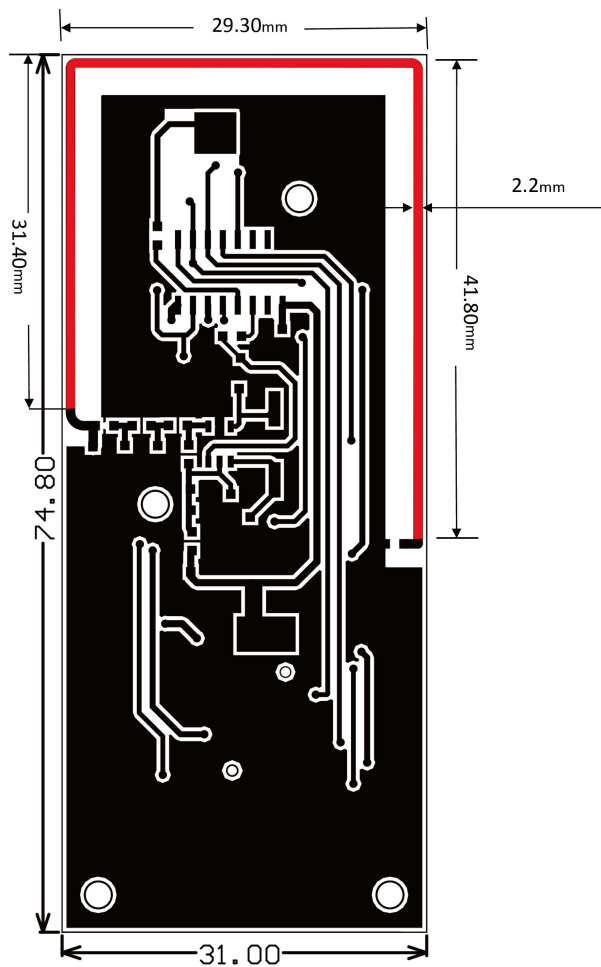


## 1. Antenna Description:

Antenna type	PCB antenna
Model	<b>MODX01RG</b>
Frequency range	420MHz~450MHz
Manufacturer	Shenzhen Shengda Electronics Co., LTD

## 2. Antenna Photo:



## 3. Antenna Efficiency and Gain:

Frequency(MHz)	420	430	440	450
Efficiency (%)	56.74	58.36	58.92	62.54
Gain(dBi)	0.38	0.50	0.43	0.46