

Antenna Under Test Report

Model: EJ5340

General Items

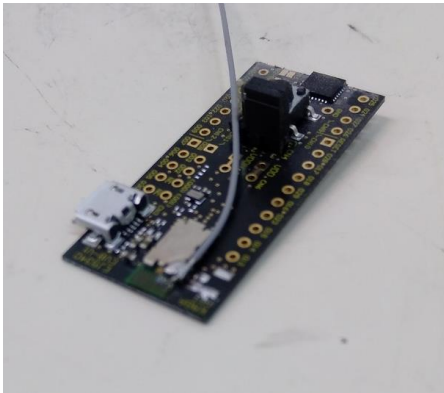
- Antenna Category
Monopole Antenna
- Test dates, Test site
18th May 2023, TAIYO YUDEN R&D CENTER
- Name of test personnel
Jin Mikata
- Equipment information used for antenna gain measurement
Manufacturer :Microwave Vision Group
Model :SG24C
- Names of commercial test software
Manufacturer :Microwave Vision Group
SPM ver.1.9.3
Satenv ver.3.0.3.0 build23
M4Satenv ver.2.2.35

General Items

■ Table of calibrated equipment

No.	Item	Model	Serial number	Calibration Date
1	Multi-probe Systems	SG24C	1101854-0010	2023/1/18

■ Test setup photos



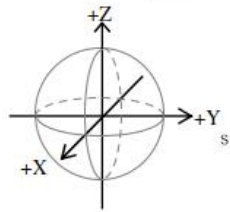
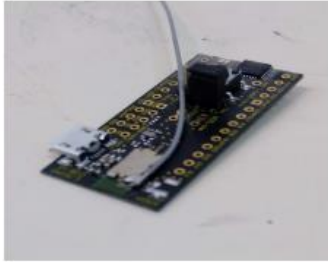
Measurement data

Measurement data of antenna

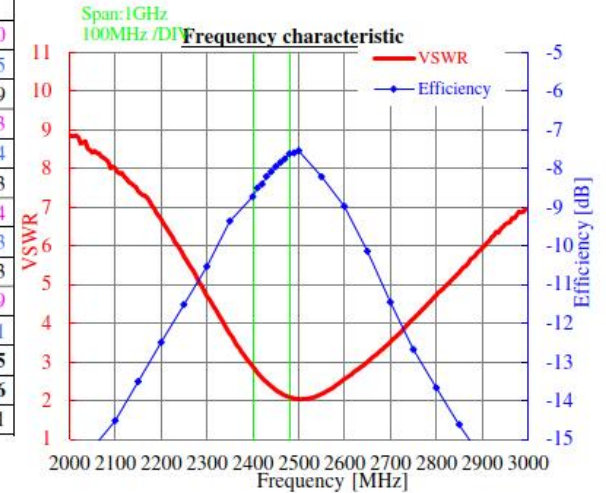
Measured in MVG SG24 system at TAIYO YUDEN R&D CENTER.

18.May.2023

Appearance and coordinates definition

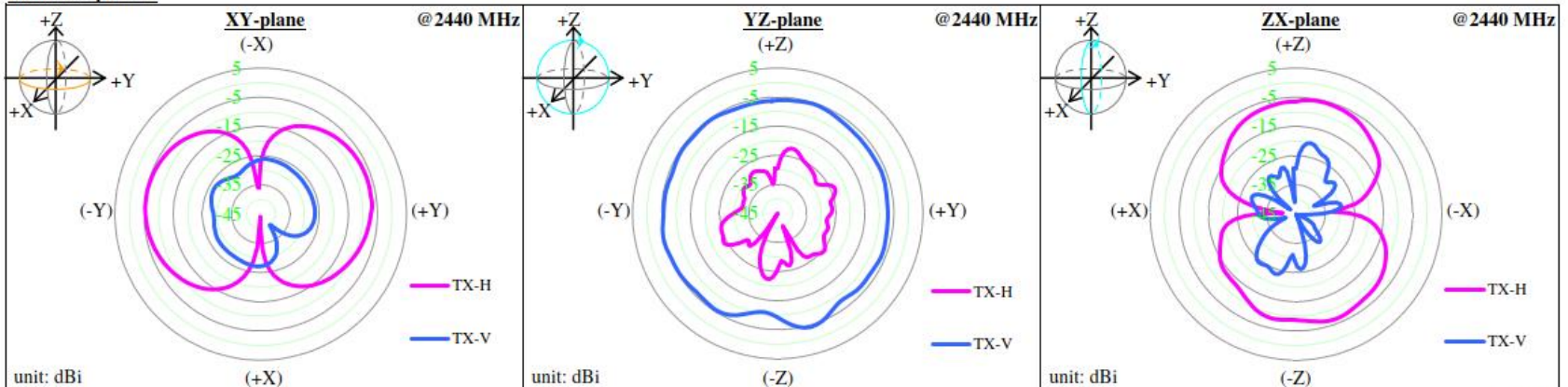


Frequency [MHz]	@ 2400	@ 2440	@ 2480	
Peak gain	[dBi]			
3-plane	TX-H	-5.2	-5.3	-5.0
	TX-V	-4.2	-4.3	-3.8
		-4.2	-4.3	-3.8
Average gain	[dBi]			
XY-plane	TX-H	-10.3	-9.5	-9.0
	TX-V	-27.7	-27.8	-28.5
	Plus(H,V)	-10.2	-9.4	-8.9
YZ-plane	TX-H	-26.6	-26.3	-26.3
	TX-V	-6.3	-5.8	-5.4
	Plus(H,V)	-6.3	-5.8	-5.3
XZ-plane	TX-H	-10.1	-9.8	-9.4
	TX-V	-29.8	-28.2	-28.3
	Plus(H,V)	-10.0	-9.7	-9.3
3plane	TX-H	-11.9	-11.4	-10.9
	TX-V	-11.0	-10.6	-10.1
		-8.4	-7.9	-7.5
Efficiency [dB]	-8.7	-8.1	-7.6	
VSWR [:1]	3.0	2.4	2.1	



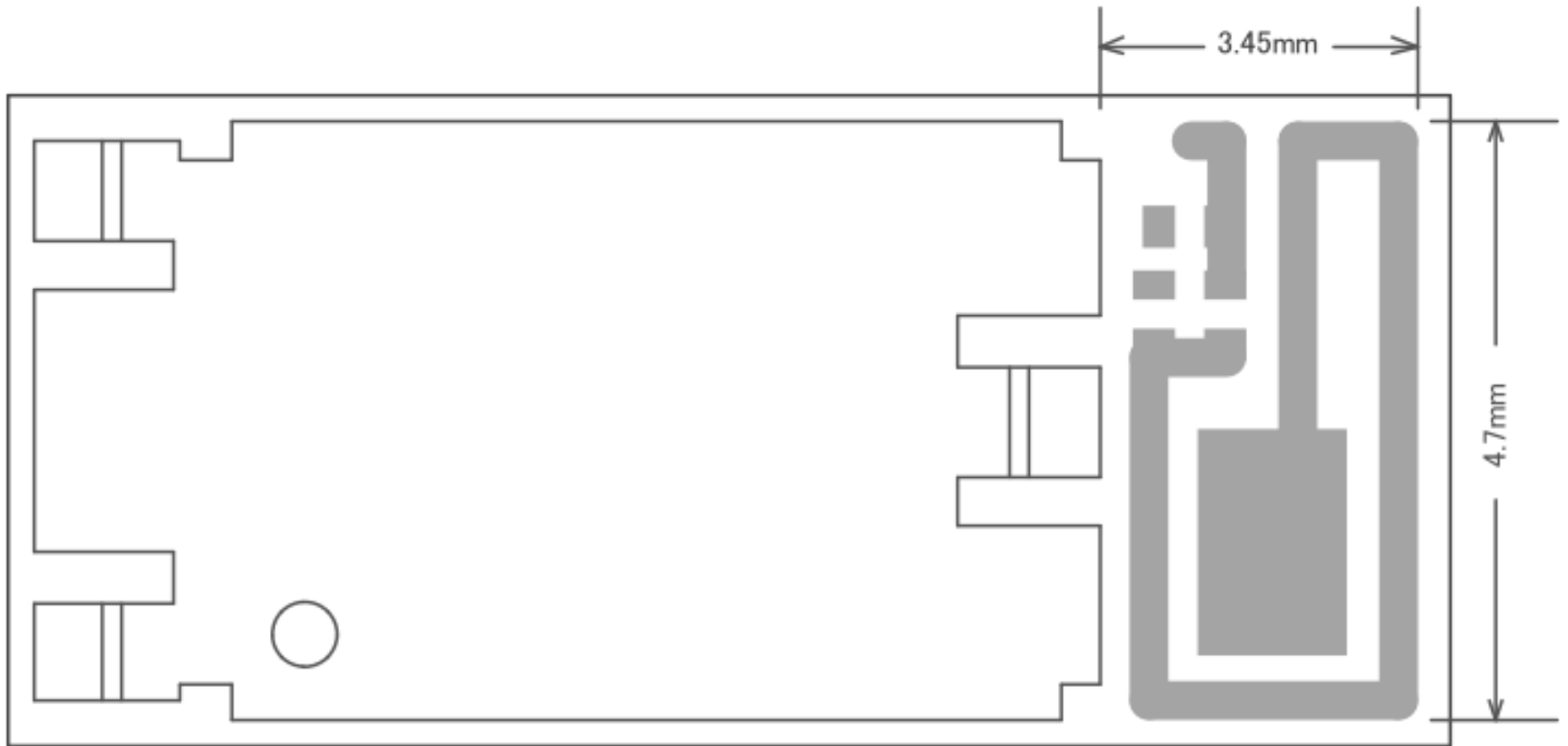
*Note: The value is average value in 1 round of each inclination direction angle.

Radiation pattern



2023/5/18

Antenna Appearance





KAGA FEI