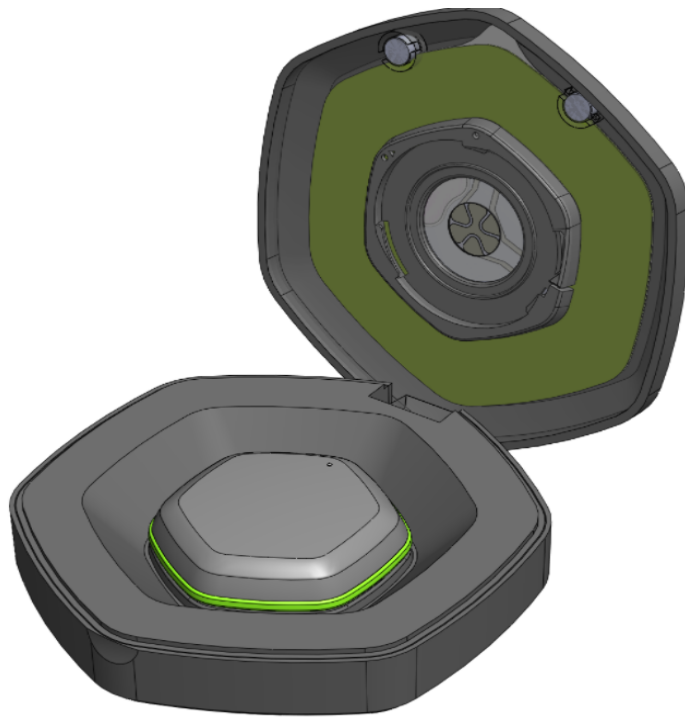


---

# Hydration Biosensor

NIX POD Manual



IC: 28464-E01    FCC ID:2A6N9E01

## **PROJECT**

NIX

January, 2022

model: E01

NIX POD Manual

# Table of Contents

Table of Contents	1
Revision History	2
Control and visualization elements	3
Create account	4
Log in	5
Get Started	6
Create your profile	6
Pairing	7
Start a Workout	8
End the workout	11
Meaning of the RGB LED	14

# Revision History

---

Title	Date	Revision By	Approval	Description
Initial Release	20220105			Initial Release



# Control and visualization elements

---

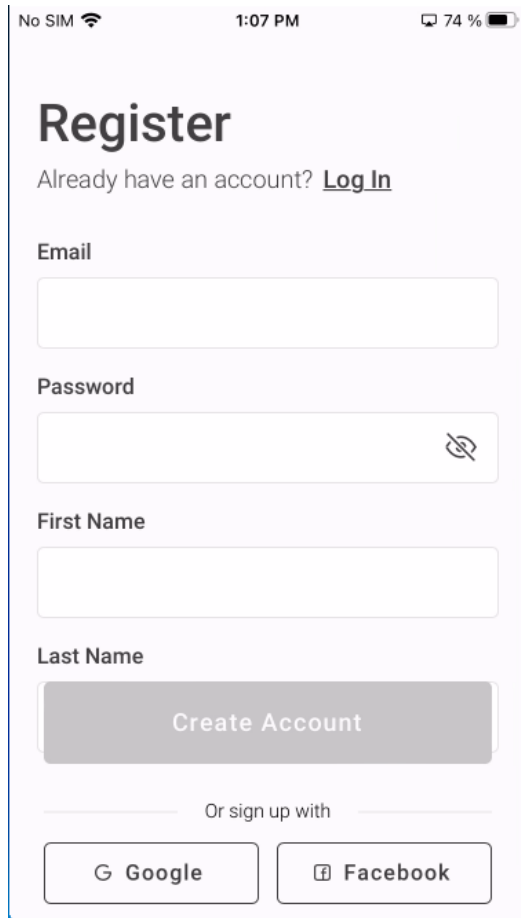


**1. RGB LED**

**2. Tactile switch**

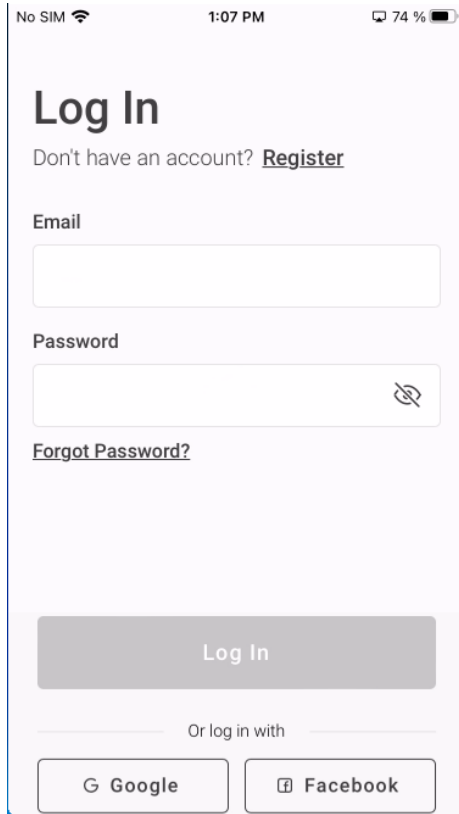
# Create account

The first step when opening the app for the first time is to create a user account:

A screenshot of a mobile application's registration screen. The status bar at the top shows 'No SIM', signal strength, time '1:07 PM', and battery level '74 %'. The screen has a light pink background. The title 'Register' is in a large, bold, dark font. Below it, the text 'Already have an account?' is followed by a blue link 'Log In'. There are four input fields: 'Email', 'Password' (with an eye icon for toggling visibility), 'First Name', and 'Last Name'. A grey button labeled 'Create Account' is positioned below the 'Last Name' field. At the bottom, the text 'Or sign up with' is centered between two buttons: 'G Google' and 'Facebook'.

# Log in

Once the user account is created or if one already exists, you must log in.

A mobile application login screen. At the top, the status bar shows "No SIM", signal strength, "1:07 PM", and "74 %". The main heading is "Log In". Below it, a link says "Don't have an account? [Register](#)". There are two input fields: "Email" and "Password". The "Password" field has a toggle icon on the right. Below the "Password" field is a link "[Forgot Password?](#)". A large grey button labeled "Log In" is centered below the inputs. At the bottom, there is a separator line with the text "Or log in with" in the center. Below this are two buttons: "G Google" and "Facebook".

No SIM 1:07 PM 74 %

## Log In

Don't have an account? [Register](#)

Email

Password

[Forgot Password?](#)

Log In

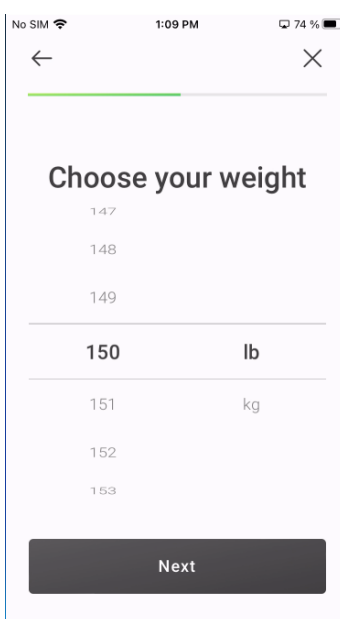
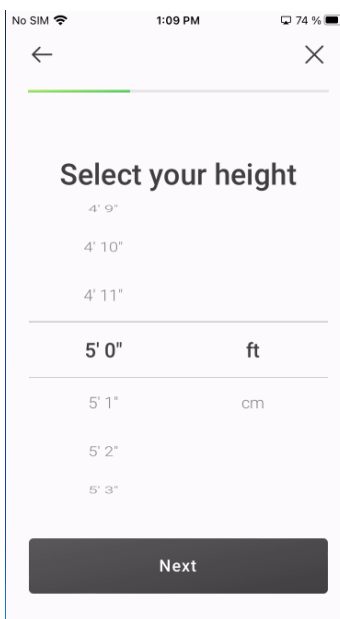
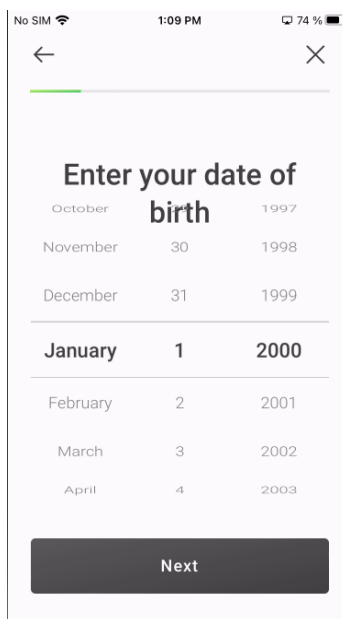
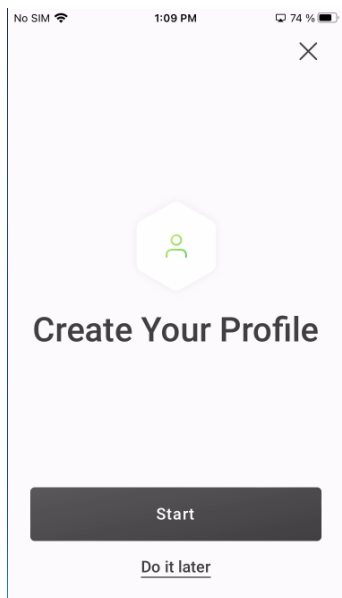
Or log in with

G Google Facebook

# Get Started

## 1. Create your profile

Some personal information must be entered in order to create personalized results:



Information that may be sensitive to some users can be omitted

The first screen, titled "Select your biological sex", features three selectable options: "Male", "Female", and "Prefer not to say". Below these options is a link that reads "Why are we asking for this?" followed by a question mark icon. A "Next" button is positioned at the bottom of the screen. The second screen, titled "Enter your race", is marked as "Optional" and lists six race categories: "American Indian or Alaska Native", "Asian", "Black or African American", "Hispanic, Latino or Spanish", and "Native Hawaiian or Other Pacific Islander". It includes a "Next" button and a "Skip this question" link at the bottom.

## 2. Pairing

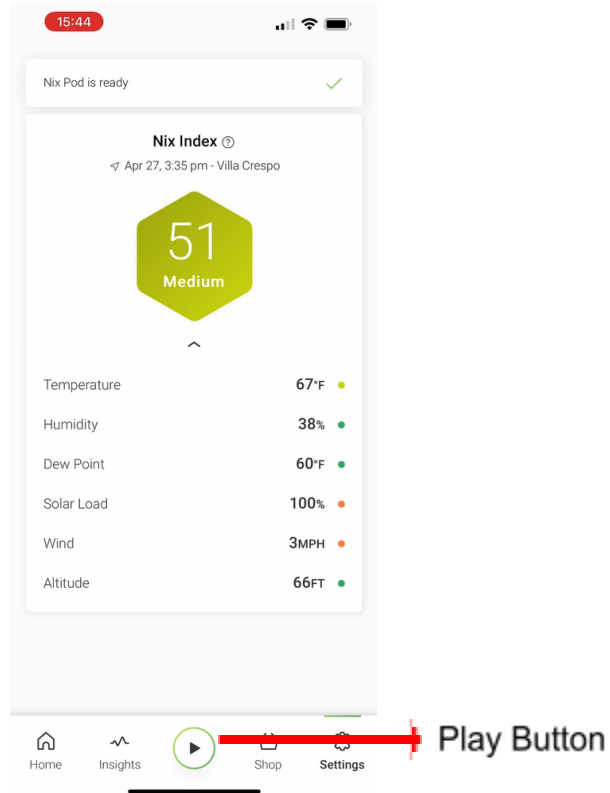
After creating your profile, it is necessary to perform the pairing process with the pod, for this must be pressed and hold the tactile switch for 5 seconds until LED turns blue, then release the button and wait until the app completes the process.

The pairing process is shown across three screens. The first screen, "Pair Your Nix Pod", displays a Bluetooth icon and offers "Continue" and "Do it later" options. The second screen shows a Nix Pod icon and provides instructions: "Press and hold the button for 5 seconds until LED turns blue, then release.", with a "Start Pairing" button. The third screen shows the Nix Pod icon with the text "Searching for your Nix Pod".

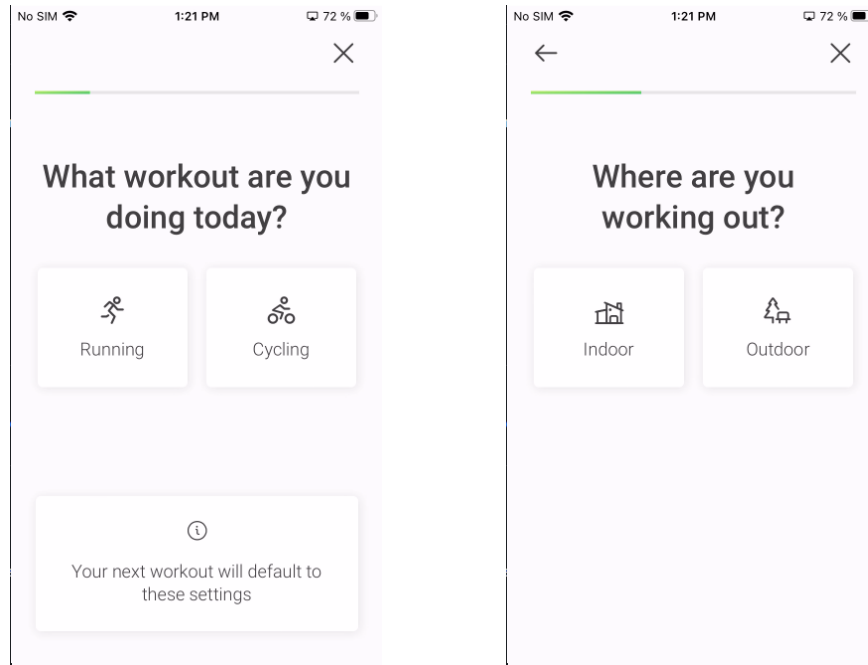


### 3. Start a Workout

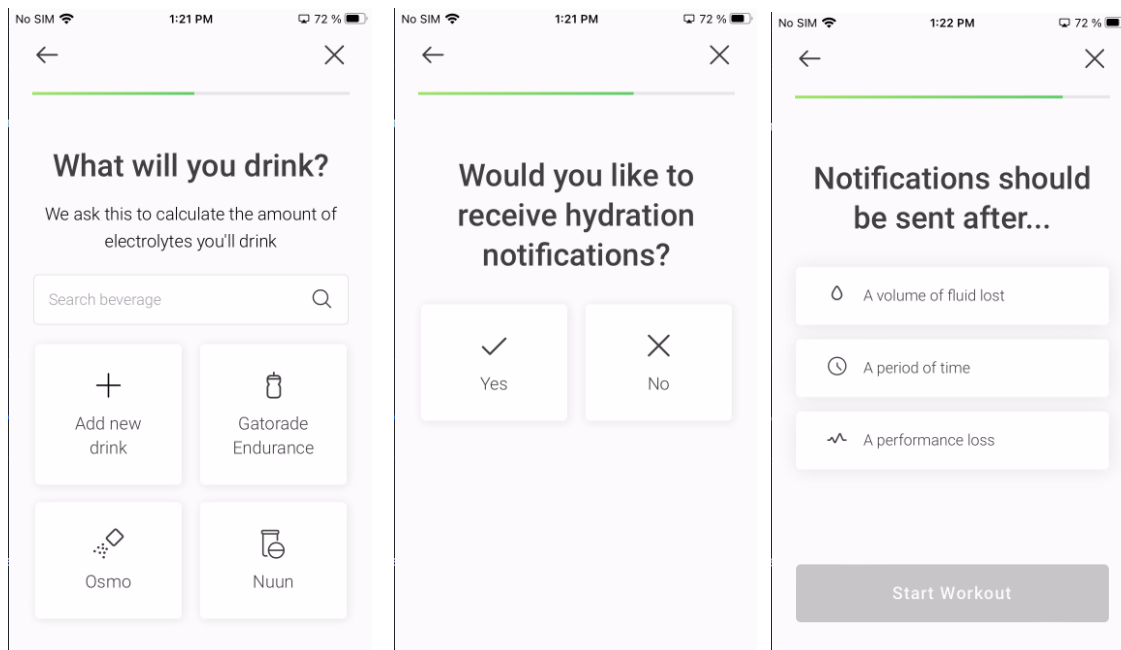
To start a workout, touch the play button and follow the instructions.



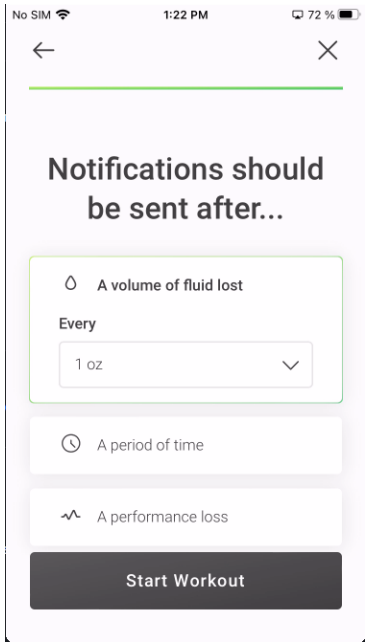
If the pod has a patch installed, the LED shows green with a slow blinking (once per second) and jumps to workout configuration; otherwise, the LED indicates green with a fast blinking (five times per second) and shows a message asking to insert the pod in the patch.



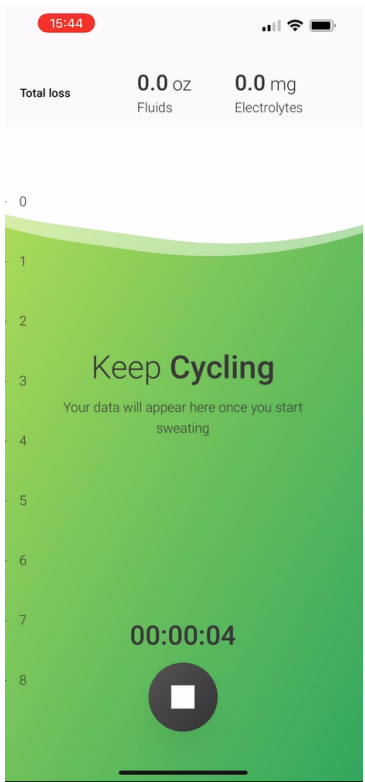
You can choose the type of drink or continue with the process



Once the workout configuration is finished, you must press the **start workout** button

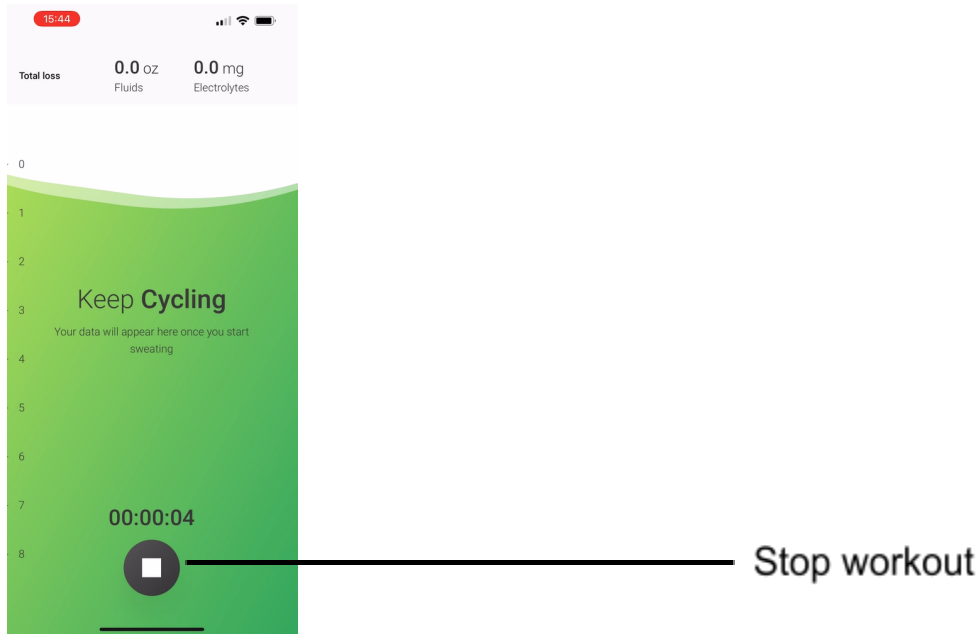


The workout is run (LED shows no color)

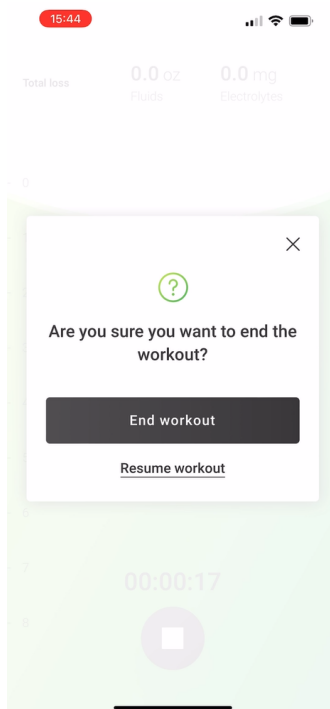


#### 4. End the workout

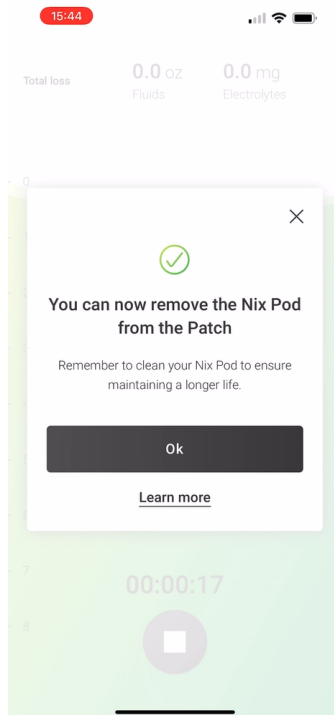
To end a workout, you must press the stop button located at the bottom center of the screen.



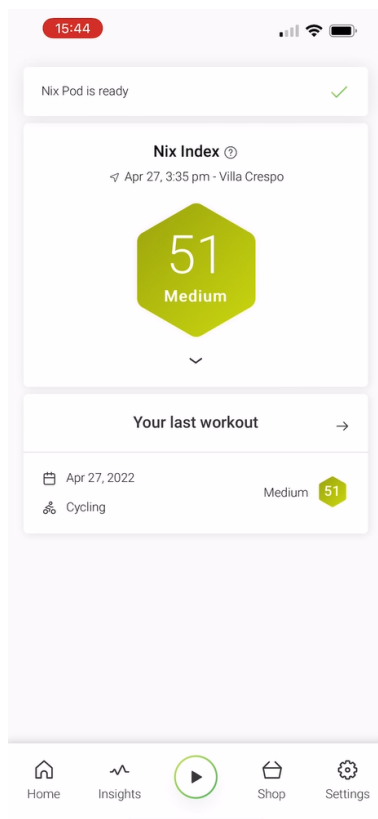
A confirmation message appears before stopping the workout.

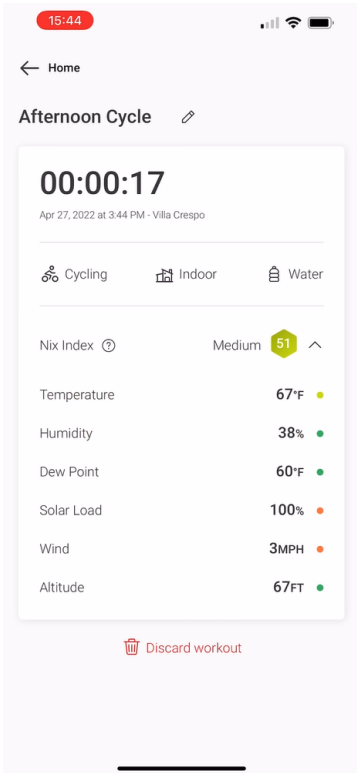


To end the workout the pod must be removed from the patch



The data of the last workout is available





## 5. Meaning of the RGB LED

MODE AND STATE	LED COLOR	BLINK	COMMENTS
Pairing bluetooth	BLUE	5Hz	pairing between POD and host APP
Wait to start			
Ready with patch	GREEN	1Hz	No charger
Idle no patch	GREEN	5Hz	No patch and No charger
Charger	AMBER	1Hz	Charging device blink - full charge solid amber
Exercise			
Active with patch	NO COLOR		
Interrupt	RED	5Hz	No patch and no charger
Interrupt + Charger	AMBER	1Hz	Charging device blink - full charge solid amber
Wait to finish			
Have data or patch			
Out of charger	RED	1Hz	No charger - pod is not connected to charger
Have data + Charger	AMBER	1Hz	Charging device blink - full charge solid amber

- **Blue**  
Pairing between Nix Pod and App.
- **Green**  
Your Nix Pod is ready for use.
- **Amber**  
Blinking - charging.  
Solid - fully charged.
- **Red**  
In workout - No patch detected or low battery.  
Post workout - No Battery.

L' émetteur/r écepteur exempt de licence contenu dans le pr ésent appareil est conforme aux CNR d' Innovation, Sciences et D éveloppement é conomique Canada applicables aux appareils radio exempts de licence. L' exploitation est autoris é e aux deux conditions suivantes :

(1) L' appareil ne doit pas produire de brouillage;

(2) L' appareil doit accepter tout brouillage radio é lectrique subi, m ê me si le brouillage est susceptible d' en compromettre le fonctionnement.

## FCC CERTIFICATE STATEMENT

NOTE: This equipment has been tested and found to comply with the limits for a Class B digital device, pursuant to part 15 of the FCC Rules. These limits are designed to provide reasonable protection against harmful interference in a residential installation. This equipment generates uses and can radiate radio frequency energy and, if not installed and used in accordance with the instructions, may cause harmful interference to radio communications. However, there is no guarantee that interference will not occur in a particular installation. If this equipment does cause harmful interference to radio or television reception, which can be determined by turning the equipment off and on, the user is encouraged to try to correct the interference by one or more of the following measures:

- Reorient or relocate the receiving antenna.
- Increase the separation between the equipment and receiver.
- Connect the equipment into an outlet on a circuit different from that to which the receiver is connected.
- Consult the dealer or an experienced radio/TV technician for help

Changes or modifications not expressly approved by the party responsible for compliance could void the user's authority to operate the equipment.

This device complies with Part 15 of the FCC Rules. Operation is subject to the following two conditions:

1. This device may not cause harmful interference, and
2. This device must accept any interference received, including interference that may cause undesired operation.

## IC-ID CERTIFICATE STATEMENT

This device contains licence-exempt transmitter(s)/receiver(s) that comply with Innovation, Science and Economic Development Canada's licence-exempt RSS(s). Operation is subject to the following two conditions:

1. This device may not cause interference.
2. This device must accept any interference, including interference that may cause undesired operation of the device.

