

<b>EXHIBIT 3 EUT EXTERNAL AND ASSOCIATED AUXILIARIES PHOTOS</b>	
<b>ELECTRONICS TESTING EMC TEST FACILITY</b>	
<b>TEST REPORT NUMBER</b>	UFA 2213IND642-3
<b>TEST REPORT ISSUE DATE</b>	11 July 2022
<b>TEST REPORT VERSION</b>	1.0
<b>MANUFACTURER</b>	TE CONNECTIVITY INDIA PVT. LTD,
<b>EUT NAME</b>	TE Connectivity's AMP Weld Smart E Controller
<b>EUT MODEL</b>	2388292-1
<b>CONDITION OF EUT WHEN RECEIVED</b>	Good
<b>ISSUED TO : NAME AND CONTACT INFORMATION OF CUSTOMER</b>	<b>TE CONNECTIVITY INDIA PVT LTD,</b> SAHASRA SHREE FIRST FLOOR NO. 88P EXPORT PROMOTION INDL, WHITEFIELD ROAD, BANGALORE, 560066
<b>ISSUED BY : NAME AND ADDRESS OF TEST LABORATORY</b>	<b>Tarang Labs, Wipro Limited</b> Sy. No. 69P, 71/4P, 78/8AP, 134P, 76P, 77P, 80P, 70P, 79/1P, Unit 1, Sarjapur Road, Doddakannelli Village, Varthur Hobli, Bengaluru (Bangalore) Rural, Karnataka, 560035 Tel: +91-80-30292929 Fax: +91-80-30298200 Email: tarang-planet@wipro.com Web: <a href="http://www.wipro.com">www.wipro.com</a>



## AMENDMENT HISTORY

Amendment Number	Amendment Date	Author of Amendment	Previous Report Version	Previous Report Date
Amendment Details	Not Applicable			

---

## TABLE OF CONTENTS

1	TEST REPORT SUMMARY .....	6
2	GENERAL INFORMATION .....	8
2.1	ACCREDITATION DETAILS .....	8
3	EUT EXTERNAL AND ASSOCIATED AUXILIARIES PHOTOS.....	9

## LIST OF FIGURES

FIGURE 1: PHOTOGRAPH OF EUT .....	9
FIGURE 2: PHOTOGRAPH OF MODEL NUMBER OF EUT .....	9
FIGURE 3: PHOTOGRAPH OF SERIAL NUMBER OF EUT .....	10
FIGURE 4: PHOTOGRAPH OF LENGTH AND WIDTH OF EUT .....	11
FIGURE 5: PHOTOGRAPH OF AMP WELD CORD .....	12
FIGURE 6: PHOTOGRAPH OF MODEL NUMBER OF AMP WELD CORD .....	12
FIGURE 7: PHOTOGRAPH OF RED LITHIUM BATTERY .....	13
FIGURE 8: PHOTOGRAPH OF MODEL NUMBER OF RED LITHIUM BATTERY .....	13
FIGURE 9: PHOTOGRAPH OF ANDROID MOBILE .....	14
FIGURE 10: PHOTOGRAPH OF MODEL NUMBER AND SERIAL NUMBER OF ANDROID MOBILE.....	14
FIGURE 11: PHOTOGRAPH OF MODEL NUMBER OF LAPTOP .....	15
FIGURE 12: PHOTOGRAPH OF MODEL NUMBER OF LAPTOP .....	15



---

## LIST OF TABLES

No table of figures entries found.

# 1 TEST REPORT SUMMARY

<b>Applicant</b>	TE CONNECTIVITY INDIA PVT. LTD,
<b>Manufacturer</b>	TE CONNECTIVITY INDIA PVT. LTD,
<b>EUT Name</b>	TE Connectivity's AMP Weld Smart E Controller
<b>EUT Model</b>	2388292-1
<b>EUT Serial Number</b>	TE-1639468569 and TE-1639040963
<b>Date of receipt of test item</b>	25 March 2022
<b>EUT Category / Type of Equipment</b>	Industrial/Table top
<b>EUT Operating Voltage range</b>	Battery operated (18VDC to 22VDC)
<b>EUT Operating Frequency range</b>	NA
<b>EUT Power Rating</b>	Steady State: 5.5Watts Peak: 660Watts
<b>EUT Operating Current (max)</b>	≤250 milli Ampere
<b>Date of Test</b>	25 March 2022
<b>Venue of Test</b>	Tarang Labs-EMC

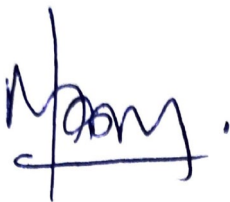

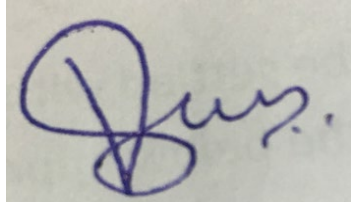
Applicable Standard	Applicable Test	Frequency range/ Test level	Applicable port	Results- Criterion
NA	NA	NA	NA	NA

**Note:** Refer report number UFA 2213IND642-1

**TE Connectivity's AMP Weld Smart E Controller** was tested by Tarang Labs as per the standards that are listed in the table above. Based on the observations during the test and interpretations by Tarang labs, results have been indicated. The test results produced in this report shall apply only to the above sample that has been tested under the specific conditions and modes of testing as described in the report. Other similar equipment may not necessarily reproduce same result due to production tolerances and measurement uncertainties. Any measurement uncertainties listed in this report are for information purpose only.

The results shall stand invalid, in case there are any modifications / additions / removals to the hardware or software or end use atmosphere to the product tested. This report shall not be modified or in any way revised unless it is expressly permitted and endorsed by Tarang labs, through a duly authorized representative. Particulars on Manufacturer / Supplier / Product configuration / performance criteria, given in this report, are based on the information given by the customer, along with test request. Tarang labs does not assume any responsibility for the correctness of such information for the above mentioned equipment under test.

Customer acknowledges that this is a test report and not a certificate to gain market access for the product. To gain market access, Customer needs appropriate clearance from the Government or authorized agency for the target market. For markets that allow self-declaration, customer needs to follow the procedure defined by the target market.

Prepared by	Reviewed by	Approved by
 <b>04<sup>th</sup> Apr 2022</b>	 <b>13<sup>th</sup> Apr 2022</b>	 <b>11<sup>th</sup> Jul 2022</b>
<b>Manohara K</b>	<b>Magesh. S</b>	<b>Venkatesha B S</b>
<b>EMC Test Engineer</b>	<b>Lead EMC Test Engineer</b>	<b>Functional Head Authorized Signatory</b>

## 2 GENERAL INFORMATION

### 2.1 ACCREDITATION DETAILS

Following are the accreditation and listing details for Tarang labs

Accreditation / Listing body	Registration / Company / Certificate Number
NABL, India	Certificate No: TC-5992 <a href="http://www.nabl-india.org/">http://www.nabl-india.org/</a>
TELECOMMUNICATION ENGINEERING CENTRE (TEC)	Certificate no 1: TEC/MRA/CAB/IND-D/7-II Certificate no 2: TEC/MRA/CAB/IND-D/67 <a href="http://www.tec.gov.in/list-of-cabs-designated-by-india/">http://www.tec.gov.in/list-of-cabs-designated-by-india/</a>
American Association for Laboratory Accreditation	Certificate No: 5148.01 <a href="https://cabportal.touchstone.a2la.org/index.cfm?event=directory.index">https://cabportal.touchstone.a2la.org/index.cfm?event=directory.index</a>



### 3 EUT EXTERNAL AND ASSOCIATED AUXILLIARIES PHOTOS



Figure 1: Photograph of EUT



Figure 2: Photograph of Model number of EUT



Figure 3: Photograph of serial number of EUT



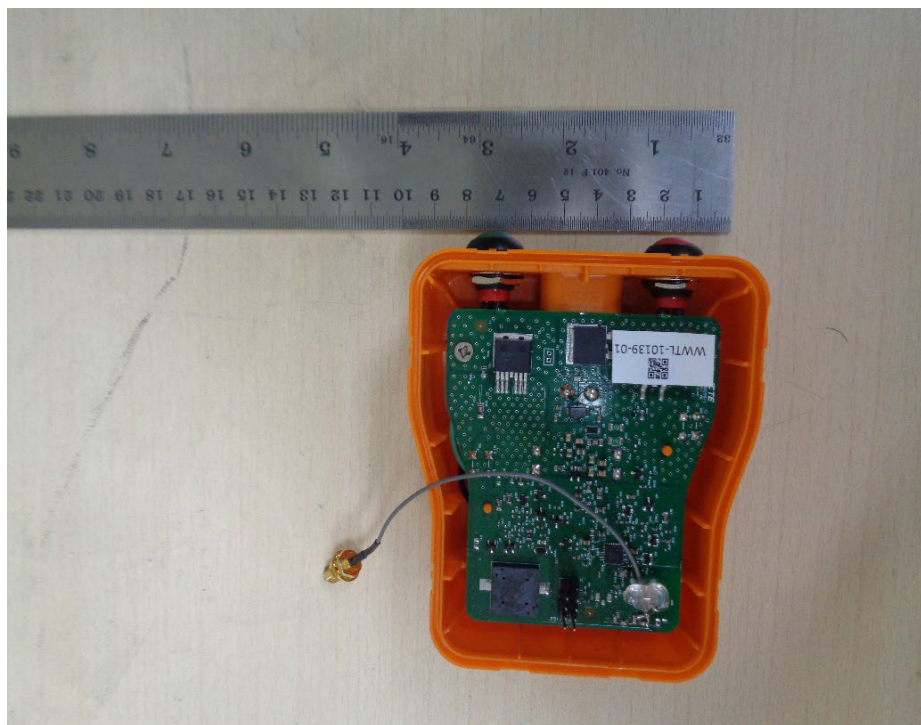


Figure 4: Photograph of Length and Width of EUT



Figure 5: Photograph of AMP Weld Cord



Figure 6: Photograph of model number of AMP Weld Cord





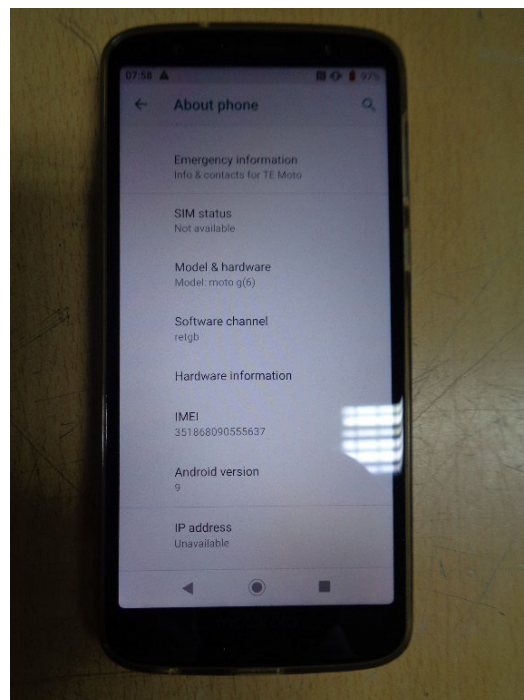
Figure 7: Photograph of RED Lithium Battery



Figure 8: Photograph of model number of RED Lithium Battery



**Figure 9: Photograph of Android Mobile**



**Figure 10: Photograph of model number and serial number of Android Mobile**



Figure 11: Photograph of model number of Laptop



Figure 12: Photograph of model number of Laptop