

# MODENA

## Node X 100 & Hub X 100

### Installation & Operation Guide



## PRODUCT DESCRIPTION

Modena Node X 100 and Modena Hub X 100 are presentation hubs. They allow participants to connect to meeting room AV equipment and USB accessories wirelessly, and enable any participant to wirelessly receive AV streams during a video conferencing session.

These devices also connect to AV peripherals via USB and HDMI, and can support multiple USB devices via a standard USB hub or by connecting a Devio SCR-20 or SCR-25.

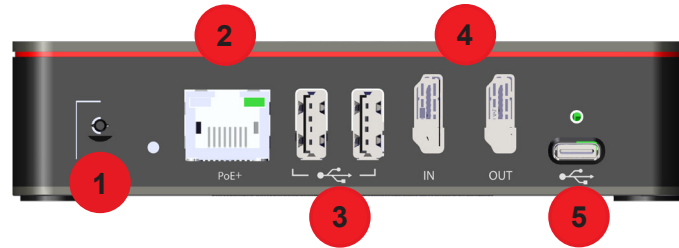
The information provided by this manual relates to physical connections and device setup.

## SETUP AND USE

User devices must be running on Windows, Mac OS X, iOS or Android operating systems with the Node and Hub's custom drivers and user software installed.

- Coordinate with local IT administrators before adding Hub or any other device to a corporate network.
- Should not be placed near potential WiFi obstacles (walls, metallic surfaces, other radio equipment or signals etc.).
- Keep the Hub away from other devices with a strong electromagnetic reference such as cordless phones and microwaves.
- Do not exceed the maximum ambient operating temperature of 32-104° F (0-40° C). Be aware of conditions in an enclosed rack that may cause the temperature to exceed ambient room conditions.

## CONNECTIONS



Node/Hub Back Panel

---

### 1. DCIN and Power

Connects with included power supply (12V).

### 2. NETWORK

The Node and Hub use a standard RJ45 network port with gigabit Ethernet capability. Connect to the LAN with Cat5e or better cables (not included).

### 3. USB-A

The standard USB 3.0 Type-A port connects USB Video Class (UVC) devices, such as USB webcams and all-in-one USB devices containing cameras, microphones and loudspeakers.

### 4. HDMI

The standard HDMI port is used as a local video input/output. It connects to display monitors, touchscreens or projectors via a standard HDMI cable (not included).

### 5. USB-C

Connects to other USB-C devices and can also power the unit.

## Modena Node X 110 and Hub X 100 Installation

The Modena Node and Hub may be installed in almost any location that is convenient for the room design, requirements, etc. This includes installation on a wall behind a typical conference room display or under a table. Be sure to allow for adequate airflow on the ventilation grilles.

Install away from heat sources such as vents, radiators, heat registers and stoves. Also avoid installing near water or steam. Do not exceed the maximum ambient operating temperature of 32-104° F (0-40° C).

### Optional Wall-Mount Bracket

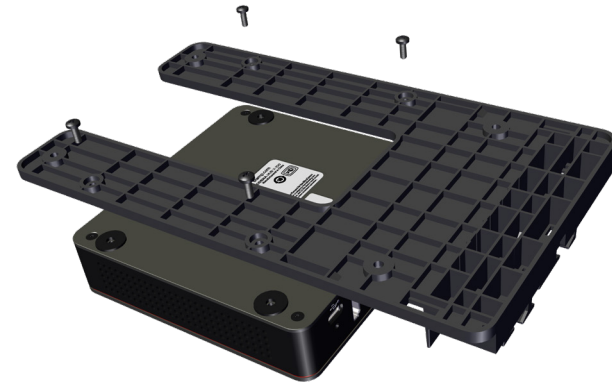
A wall-mount bracket comes installed on the device and may easily be removed. The following hardware is included for mounting the Node/Hub with the attached bracket.



**Figure 1.** Modena Node X 100 and Hub X 100 with Bracket

### Bracket Removal

Remove the four screws that secure the mounting bracket to the devices as shown in **Figure 2** if required.



**Figure 2.** Bracket Removal

### Wall-Mount Installation

1. Determine the location where the Node/Hub is to be installed.
2. Install the devices with attached bracket at the desired location shown in **Figure 3**.



**Figure 3.** - Wall installation

## Wall-Mount Installation Continued

- Secure the cables between the tabs on the cable management tray as shown in **Figure 4**.



**Figure 4.** - Node and Hub with cables and management tray

- Once the cables are secure, place the tray cover as shown in **Figures 5 and 6** (cables not shown).



**Figure 5.** - Node and Hub tray cover



**Figure 6.** - Node and Hub with cables and management tray

- Use included screw to secure the cover to the tray as shown in **Figure 7**.



**Figure 7.** Secure cover

**FCC warning:** Any changes or modifications not expressly approved by the party responsible for compliance could void the user's authority to operate this equipment.

This device complies with Part 15 of the FCC Rules. Operation is subject to the following two conditions:

- (1) This device may not cause harmful interference, and
- (2) this device must accept any interference received, including interference that may cause undesired operation.

This device and its antenna(s) must not be co-located or operating in conjunction with any other antenna or transmitter.

This equipment should be installed and operated with minimum distance 20cm between the radiator and your body.

**NOTE:**

This equipment has been tested and found to comply with the limits for a Class B digital device, pursuant to Part 15 of the FCC Rules.

These limits are designed to provide reasonable protection against harmful interference in a residential installation. This equipment generates, uses and can radiate radio frequency energy and, if not installed and used in accordance with the instructions, may cause harmful interference to radio communications.

However, there is no guarantee that interference will not occur in a particular installation. If this equipment does cause harmful interference to radio or television reception, which can be determined by turning the equipment off and on, the user is encouraged to try to correct the interference by one or more of the following measures:

- Reorient or relocate the receiving antenna.
- Increase the separation between the equipment and receiver.
- Connect the equipment into an outlet on a circuit different from that to which the receiver is connected.
- Consult the dealer or an experienced radio/TV technician for help.

FCC ID: 2A6N3-MAXCONNECT

**IC warning:**

This device complies with Industry Canada licence-exempt RSS standard(s).

Operation is subject to the following two conditions:

- (1) this device may not cause interference,
- (2) this device must accept any interference, including interference that may cause undesired operation of the device.

This Class [B] digital apparatus complies with Canadian ICE-003.

Le présent appareil est conforme aux CNR d'Industrie Canada applicables aux appareils radio exempts de licence. L'exploitation est autorisée aux deux conditions suivantes : (1) l'appareil ne doit pas produire de brouillage, et (2) l'utilisateur de l'appareil doit accepter tout brouillage radioélectrique subi, même si le brouillage est susceptible d'en compromettre le fonctionnement.

Cet appareil numérique de la classe [B] est conforme à la norme NMB-003 du Canada. **L'appareil a été évalué pour répondre aux exigences générales d'exposition RF. L'appareil peut être utilisé dans des conditions d'exposition fixes / mobiles.**

**La distance de séparation minimale est de 20 cm.**

**Operating Frequency Range band 5150-5250 MHz “for indoor use only.”**

## CONTACT US

### Email

[support@biamp.com](mailto:support@biamp.com)

### Web

[support.biamp.com](https://support.biamp.com)

### Warranty

[www.biamp.com/legal/warranty-information](https://www.biamp.com/legal/warranty-information)

### Safety and Compliance

[www.biamp.com/compliance](https://www.biamp.com/compliance)



**Note:** Every effort has been made to ensure that the information contained in this manual was complete and accurate at the time of printing. However, due to ongoing technical advances, changes or modifications may have occurred that are not covered in this manual. The latest version is available at [www.biamp.com](https://www.biamp.com).



A: 9300 S.W. Gemini Drive Beaverton, OR 97008 USA

W: [www.biamp.com](https://www.biamp.com)

JUN 2022