




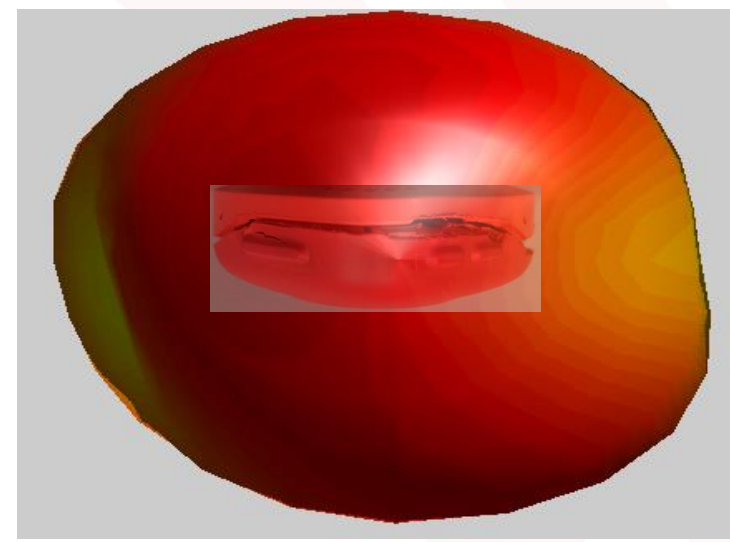
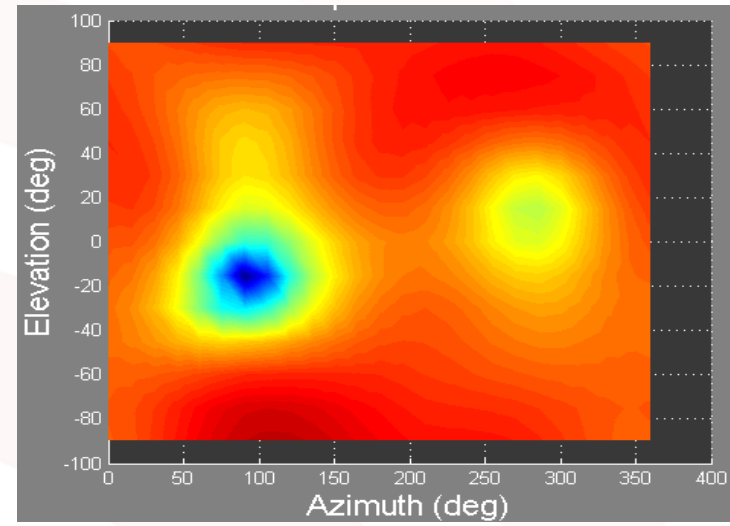
FULLY ANECHOIC 3 METER  
ANTENNA CHAMBER



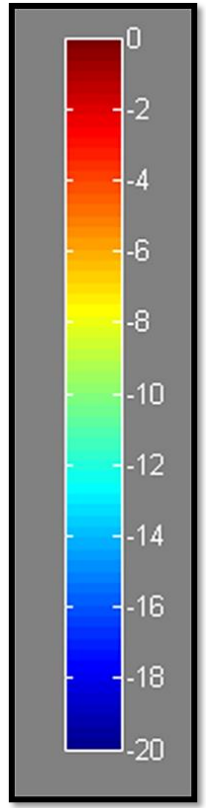
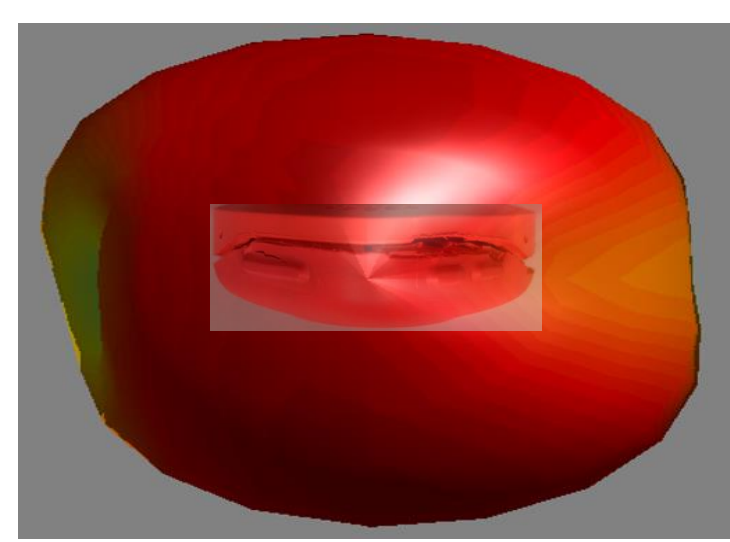
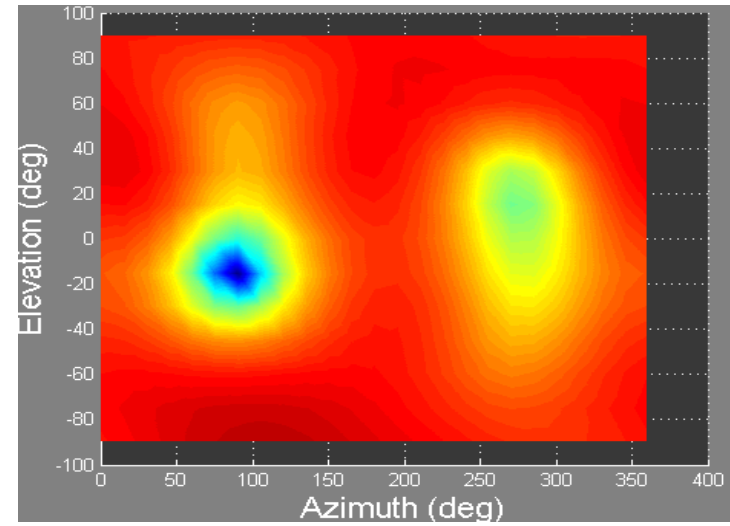
# Antenna #1 Field Theory Antenna LoRa

# 2D Heat Map & 3D Spherical

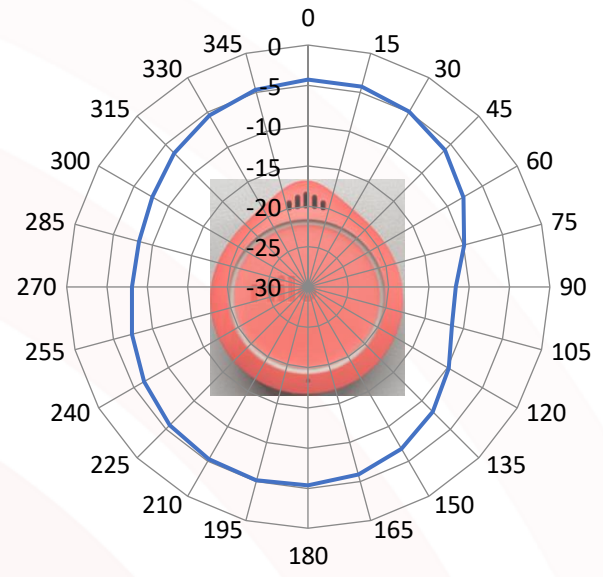
868 MHz



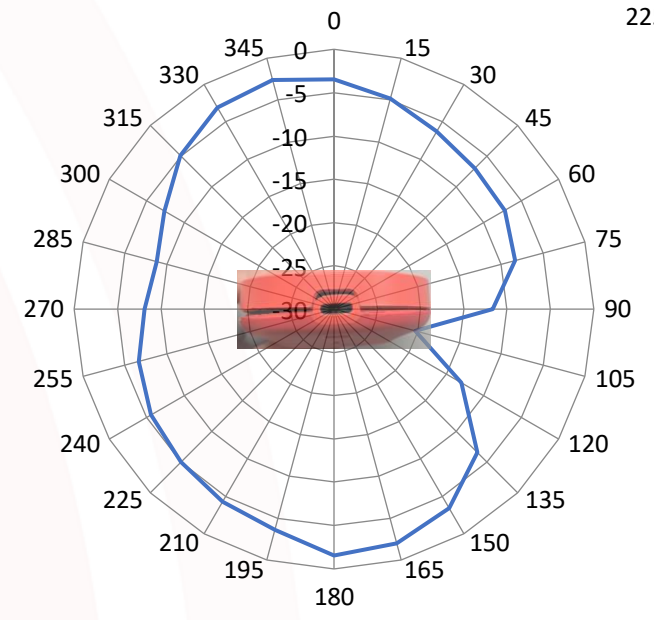
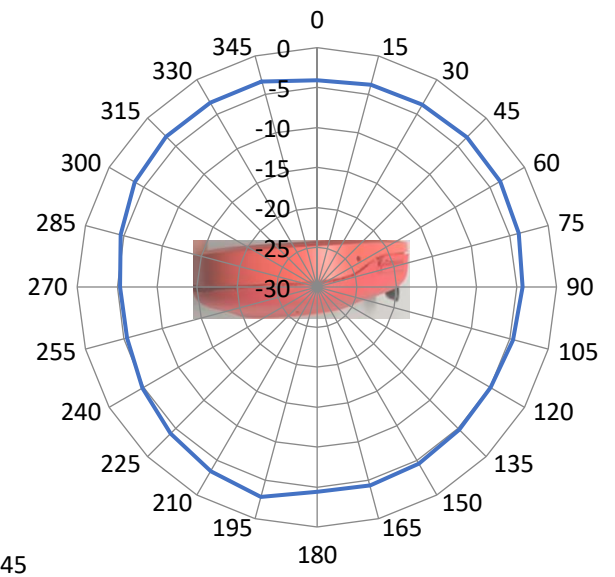
915 MHz



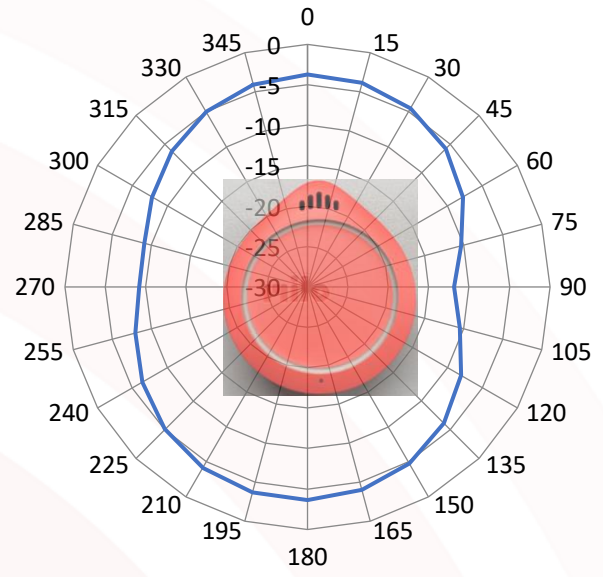
# 1D Radiation Pattern 868 MHz



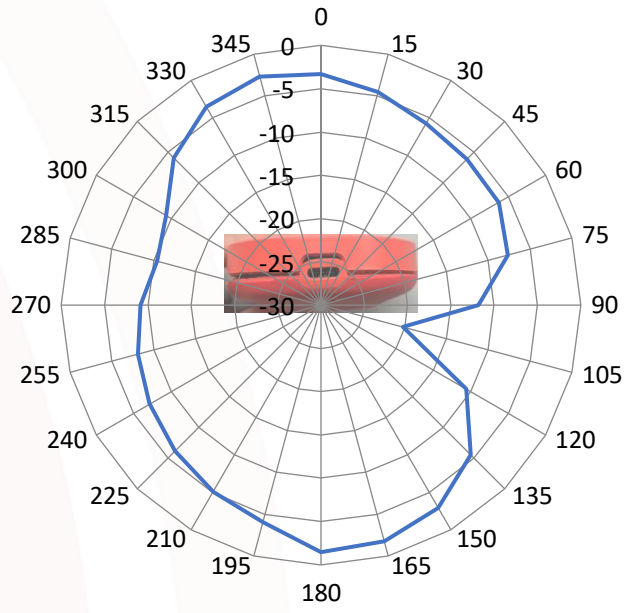
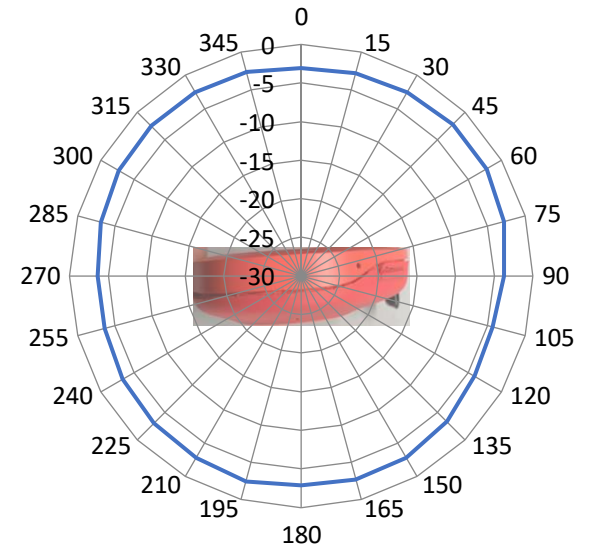
— 868 MHz



# 1D Radiation Pattern 915 MHz



— 915 MHz





FULLY ANECHOIC 3 METER  
ANTENNA CHAMBER



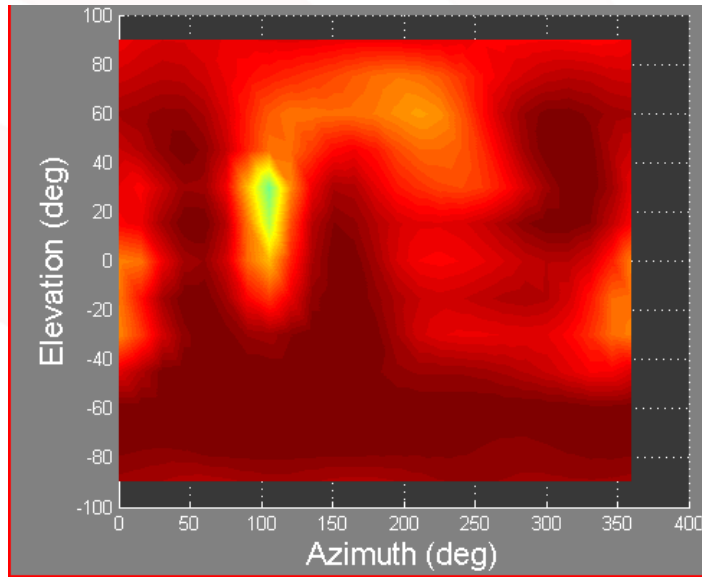
## Antenna #2 ISM



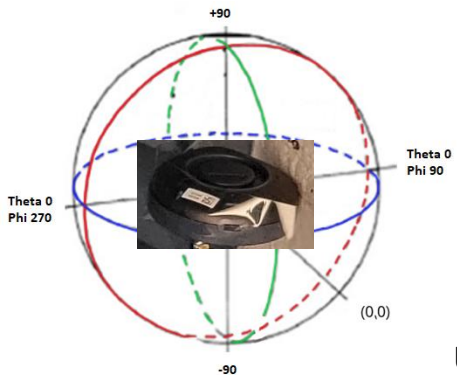
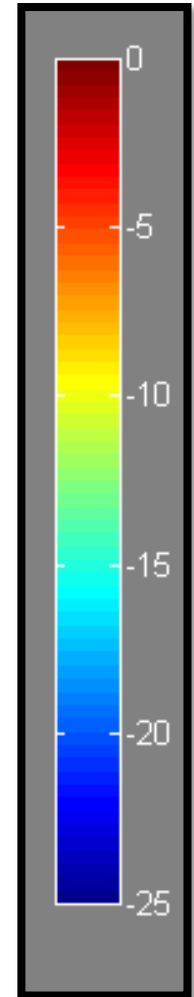
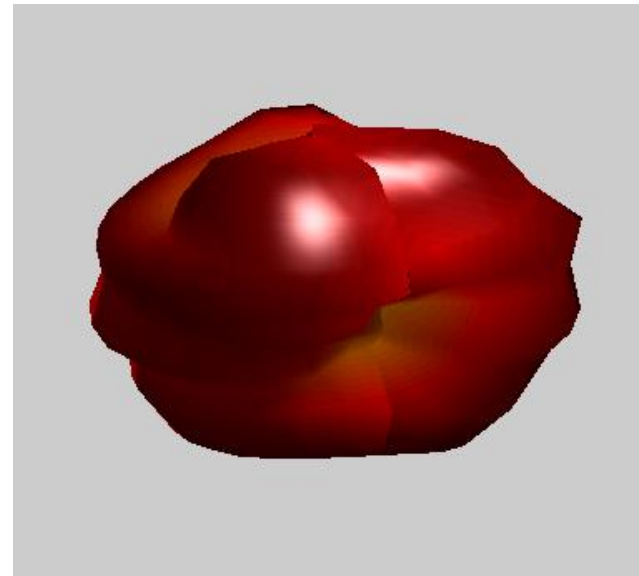
# Heat Map & 3D Spherical

Antenna 2 - ISM

2.44 GHz



2.44 GHz

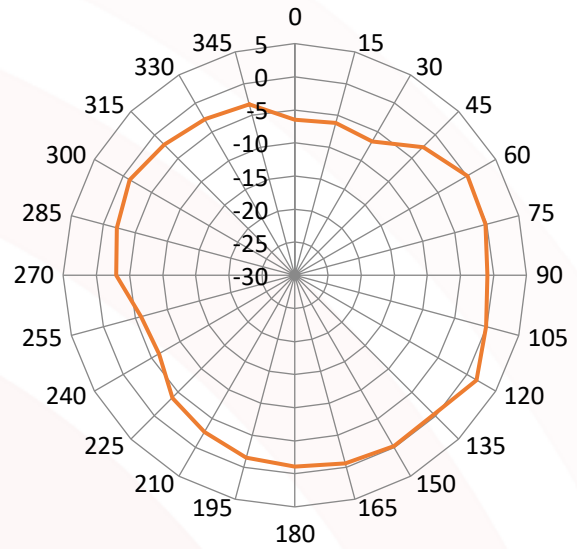


Unit Serial Number: 000153

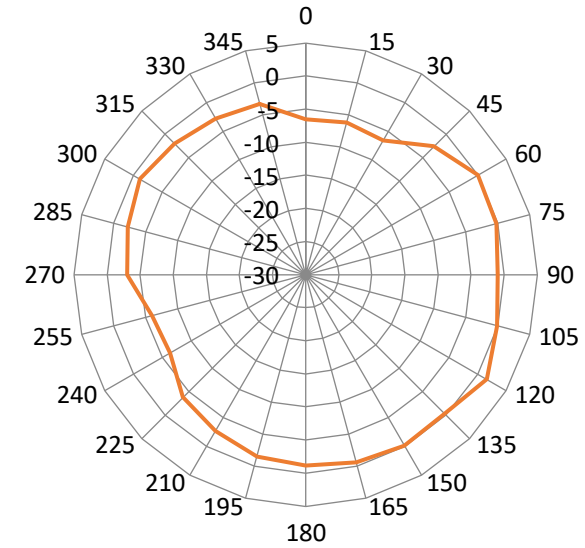
CONFIDENTIAL

# 1D Radiation Pattern

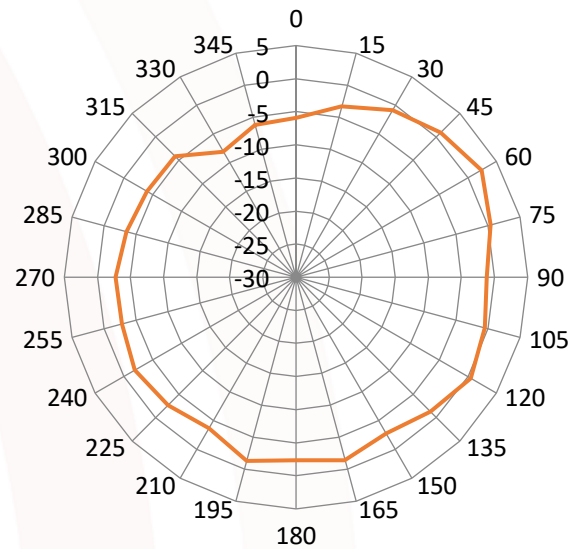
Antenna 2 - ISM



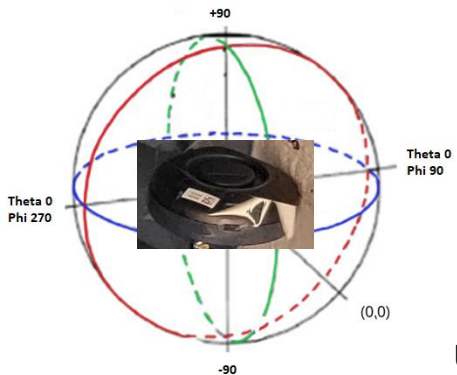
BLUE



GREEN



RED



Unit Serial Number: 000153

CONFIDENTIAL



FULLY ANECHOIC 3 METER  
ANTENNA CHAMBER



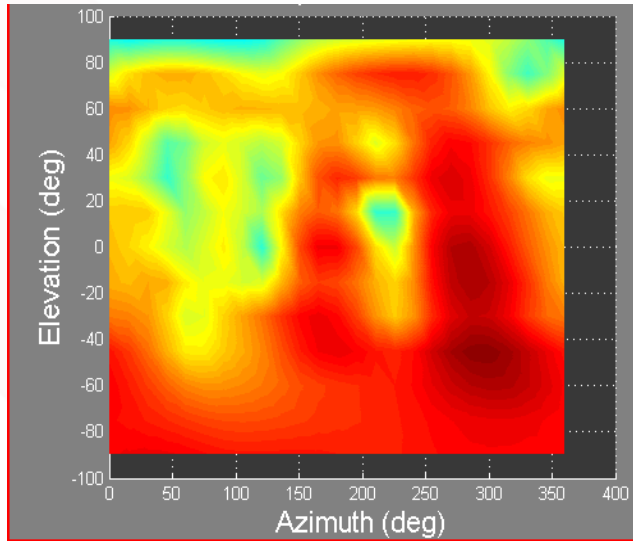
## Antenna #3 Wi-Fi



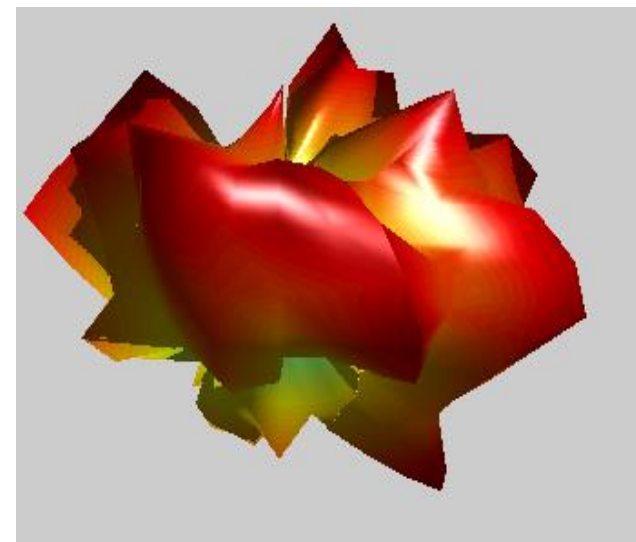
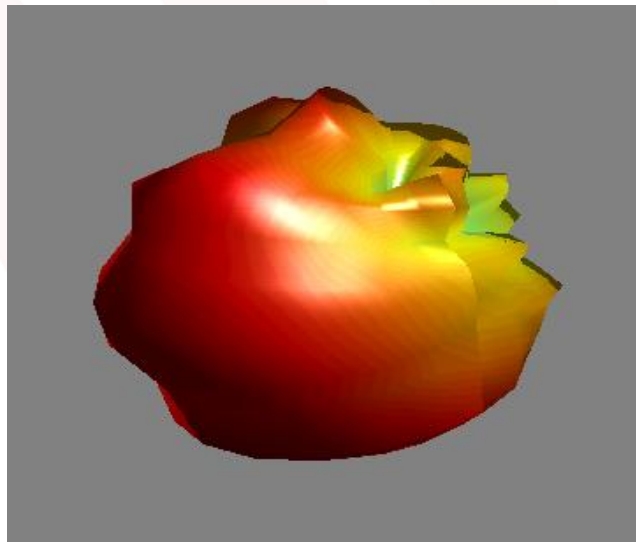
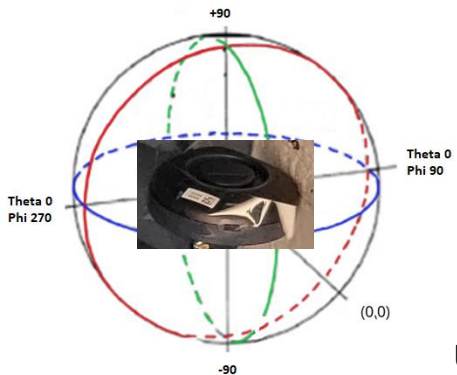
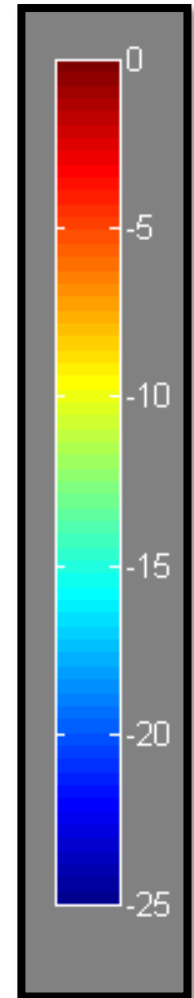
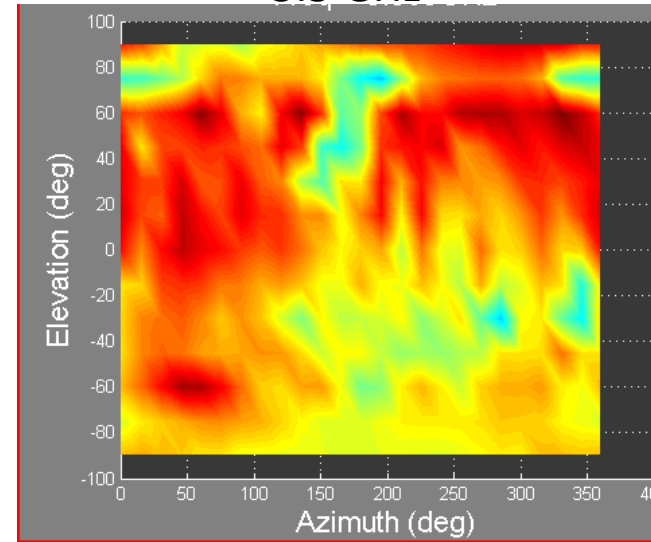
# Heat Map & 3D Spherical

Antenna 3 – Wi-Fi

2.44 GHz



5.5 GHz

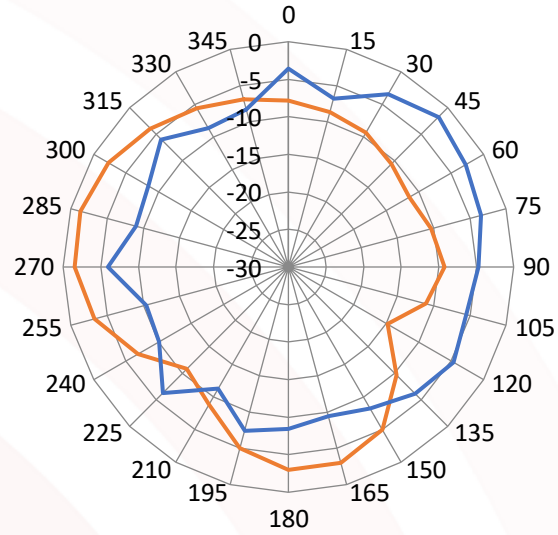


Unit Serial Number: 000153

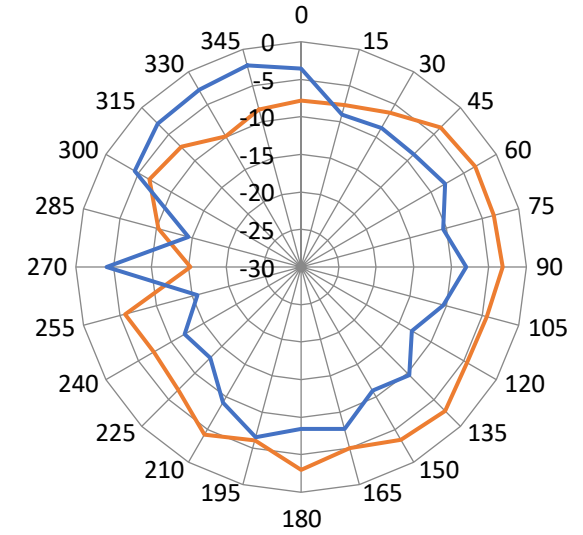
CONFIDENTIAL

# 1D Radiation Pattern

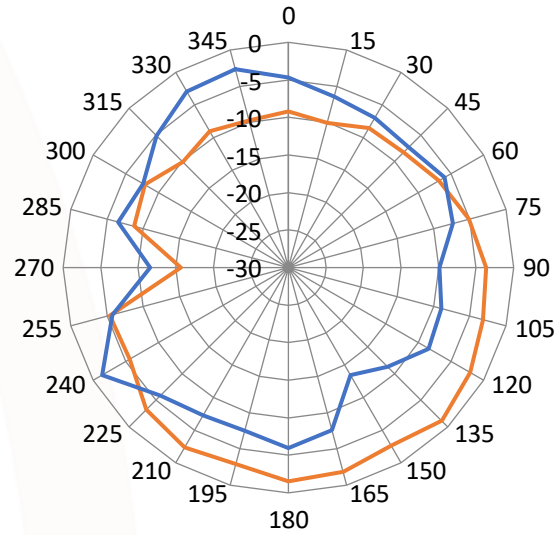
Antenna 3 - Wi-Fi



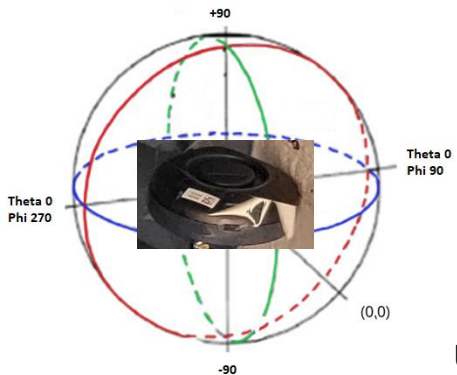
BLUE



GREEN



RED



Unit Serial Number: 000153

CONFIDENTIAL



FULLY ANECHOIC 3 METER  
ANTENNA CHAMBER



**FIELDTHEORY**<sup>®</sup>  
CUSTOM ANTENNA DESIGN & RF SOLUTIONS

Questions?

[www.fieldtheoryinc.com](http://www.fieldtheoryinc.com)