

WOGREE

Let's get started.
WIRELESS SOUND BAR



MODEL:S60

Important Safety Instructions

1. Read these Instructions.
2. Keep these Instructions.
3. Heed all Warnings.
4. Follow all instructions.
5. Do not use this apparatus near water.
6. Clean only with a dry cloth.
7. Do not block any ventilation openings. Install in accordance with the manufacturer's instructions.
8. Do not install near any heat sources such as radiators, heat registers, stoves, or other apparatus (including amplifiers) that produce heat.
9. Do not defeat the safety purpose of the polarized or grounding-type plug. A polarized plug has two blades with one wider than the other. A grounding type plug has two blades and a third grounding prong. The wide blade or the third prong are provided for your safety. When the provided plug does not fit into your outlet, consult an electrician for replacement of the obsolete outlet.
10. Protect the power cord from being walked on or pinched particularly at plugs, convenience receptacles, and the point where they exit from the apparatus.
11. Only use attachments/accessories specified by the manufacturer.
12. Unplug this apparatus during lightning storms or when unused for long periods of time.
13. Refer all servicing to qualified service personnel. Servicing is required when the apparatus has been damaged in any way, such as power-supply cord or plug is damaged, liquid has been spilled or objects have fallen into the apparatus, the apparatus has been exposed to rain or moisture, does not operate normally, or has been dropped.

SPECIAL NOTE:

When placing your unit on a lacquered or natural finish, protect your furniture with a cloth or other protective material.

FCC WARNING

Warning : Changes or modifications to this unit not expressly approved by the party responsible for compliance could void the user's authority to operate the equipment.

This device complies with part 15 of the FCC Rules. Operation is subject to the following two conditions: (1) This device may not cause harmful interference, and (2) this device must accept any interference received, including interference that may cause undesired operation.

NOTE: This equipment has been tested and found to comply with the limits for a Class B digital device, pursuant to Part 15 of the FCC Rules. These limits are designed to provide reasonable protection against harmful interference in a residential installation. This equipment generates, uses, and can radiate radio frequency energy and, if not installed and used in accordance with the instructions, may cause harmful interference to radio communications. However, there is no guarantee that interference will not occur in a particular installation. If this equipment does cause harmful interference to radio or television reception, which can be determined by turning the equipment off and on, the user is encouraged to try to correct the interference by one or more of the following measures:

- Reorient or relocate the receiving antenna.
- Increase the separation between the equipment and receiver.
- Connect the equipment into an outlet on a circuit different from that to which the receiver is connected.
- Consult the dealer or an experienced radio/TV technician for help

FCC Radiation Exposure Statement:

This equipment complies with FCC radiation

exposure limits set forth for an uncontrolled environment. This equipment should be installed and operated with minimum distance 20cm between the radiator & your body.

Additional Warnings

The apparatus shall not be exposed to dripping or splashing and that no objects filled with liquids, such as vases, shall be placed on apparatus.

L'appareil ne doit pas être exposé aux écoulements ou aux éclaboussures et aucun objet ne contenant de liquide, tel qu'un vase, ne doit être placé sur l'objet.

Battery shall not be exposed to excessive heat such as sunshine, fire or the light. Les piles ne doivent pas être exposées à de forte chaleur, tel qu'à la lumière du soleil, au feu ou autres choses de semblable.

Caution marking is located at the rear or bottom of the apparatus. Attention marquage est situé sur le panneau arrière ou inférieur de l'unité.

The marking information is located at the rear of bottom of apparatus. Le marquage est situé sur le panneau arrière ou inférieur de l'unité.



This symbol indicates that this product incorporates double insulation between hazardous mains voltage and user accessible parts.

1

What's in the box

Make sure you read all the safety information before you use this product.



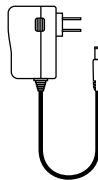
Sound Bar Main Unit



Audio cable(3.5mm to 3.5mm)



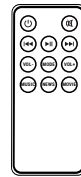
Digital Optical cable



Power adapter

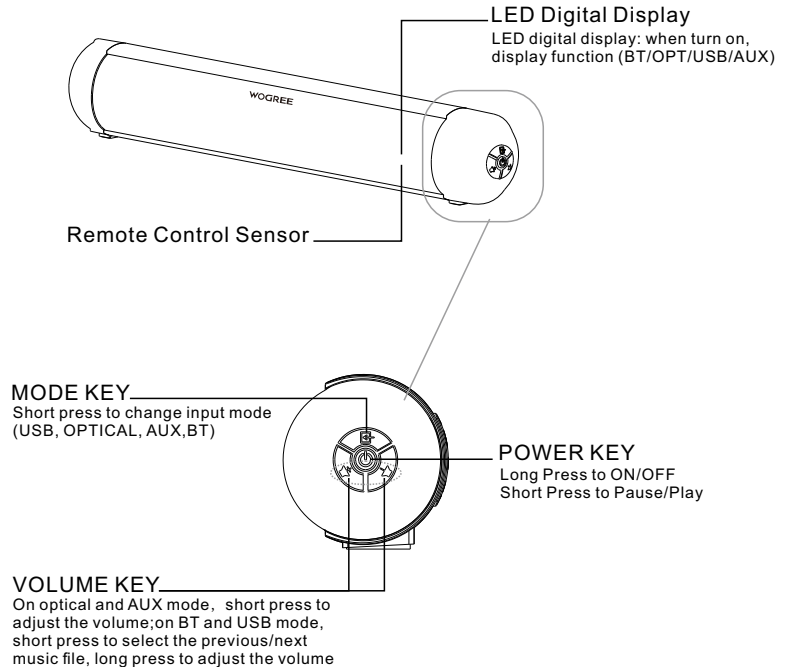


User's guide

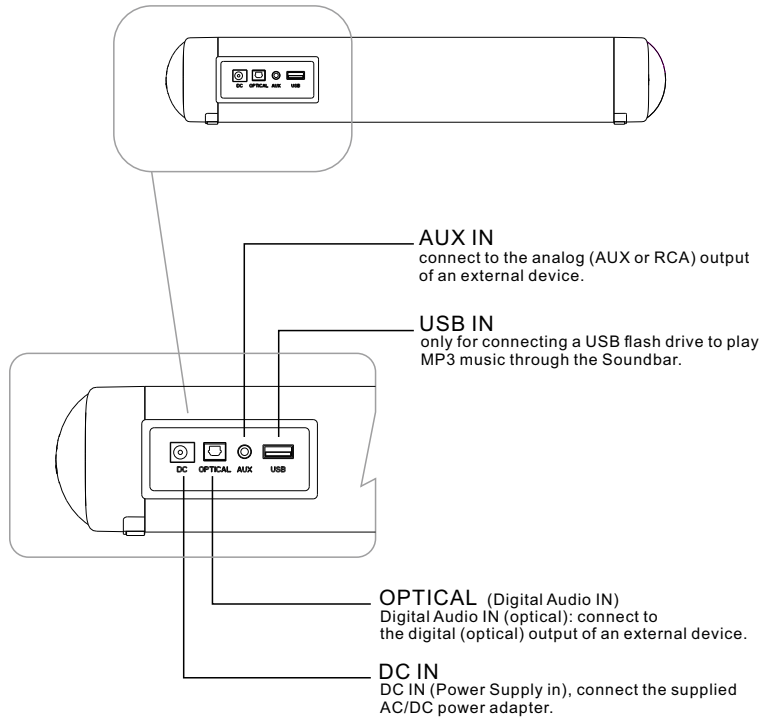


Remote control

Soundbar main unit and how to use it



Sound Bar Main Unit



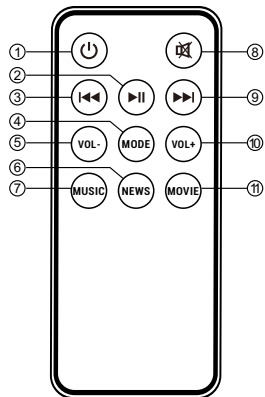
The LED display on the Sound Bar gives you information about the status of the Sound Bar.



Sound Bar status	LED Indications
In standby mode	LED no display
In optical mode	OPt
In BT mode	bLUE
In USB mode	USb
In AUX mode	LINE

3A

Using the Remote

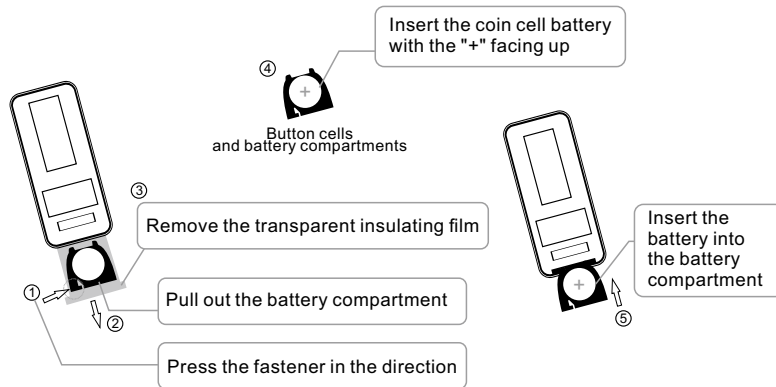


- ① Soundbar Turns on/off
- ② Short press the button to pause and play a music under BT/USB mode; long press to reset BT
- ③ Skip to previous track in BT/USB mode
- ④ Select the input modes
- ⑤ Short Press the buttons to decrease volume
- ⑥ News Mode
- ⑦ Music Mode
- ⑧ Mute or resume the sound
- ⑨ Skip to next track in BT/USB mode
- ⑩ Short Press the buttons to increase volume
- ⑪ Movie Mode

3B

Install or replace the remote batteries

Battery Type:CR2032 (supplied)



4 Connect to your TV

There are 2 ways to connect your sound bar to the TV (listed in order that we recommend): Optical (refer to 4A), and AUX (refer to 4b)

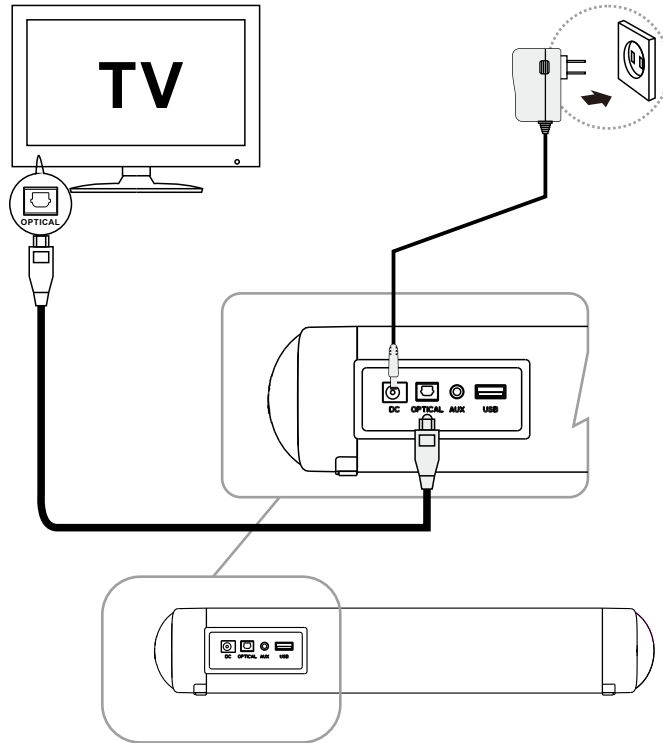
4A Optical

Step 1. Turn off the sound bar and TV, then connect the sound bar to the TV through the optical cable (need to remove the protective cap of the optical cable when connection).

Step 2. Turn on the sound bar, press the mode on the sound bar remote, select OPT on the LED display

Step 3. Turn on the TV, press the home (or menu) on the TV remote, go to TV setting → audio (sound) → TV speaker → select external speaker (turn off TV speaker), save the setting, then back to audio (sound setting) → select expert setting → digital audio output (or optical) → select PCM (some TV called SPDIF or optical), Save the setting.

Step 4. Play TV show to test the sound bar.



Kindly note:

For optical connection, please change TV audio output to PCM (or SPDIF and optical) and external speaker, otherwise you will get cracking noise or no sound.

Important: the TV default audio output is the analog signal and the internal speaker, But please note the optical cable is the digital signal, need to change your TV audio output to a digital optical/PCM signal and external speaker, otherwise the soundbar will output cracking noise sound, pop sound, static sound, or no sound.

Here are several suggestions for most TVs to set OPTICAL(Activate PCM and external speakers only):

Samsung TV

- 1, Setting→Sound→Sound Output→Turn o TV Speaker or select External Speakers
- 2, Setting→Sound→Expert Setting→Digital Output Audio Format→PCM

Vizio TV

- 1, Setting→Audio→TV Speakers→OFF
- 2, Setting→Audio→Digital Audio Out→PCM

Sony TV

- 1, Setting→ Display&Sounds→ Audio Output→ Speakers→ Audio System
- 2, Setting→ Display&Sounds→ Audio Output→ Digital Audio Out→PCM
- 3, Setting→ Display&Sounds→ Audio Output→ Pass Through Mode→ OFF

LG TV

- 1, All Setting→ Sound→ TV Speakers→OFF or select External Speakers
- 2, All Setting→ Sound→ Advance Settings→ Digital Sound Output→ PCM

TCL Roku TV

- 1, Setting→Audio→Audio Out→Auto
- 2, Setting→Audio→Digital Audio Format→Select Stereo

TCL TV (Powered by android)

- 1, TV Setting→Audio→TV Speakers→OFF or select External Speakers
- 2, TV Setting→Audio→Advance Setting→Digital Audio Out→Select PCM
- 3, TV Setting→System→T-Link→Select ON

Hisense Roku TV

- 1, Setting→Audio→ TV Speakers→ Select Disabled
- 2, Setting→Audio→Digital Audio Out→Select Stereo

ONN Roku TV

- 1, Setting → Audio → TV Speakers → Select Disabled
- 2, Setting → Audio → Digital Audio Format → Select Stereo

Hisense TV (Powered by android)

- 1, TV Setting → Sound → Speakers → Select OFF or select External Speakers
- 2, TV Setting → Sound → Advance Setting → Digital Audio Out → Select PCM

Sharp TV

- 1, TV Setting → Sound → Advance Audio Setting → Digital Audio Out → Select PCM
- 2, TV Setting → Sound → Advance Audio Setting → TV Speakers → Select OFF or select External Speakers

Sharp TV (Powered by android)

- 1, Setting → Devices Preferences → Sound → Digital Output → Select PCM
- 2, Setting → Devices Preferences → Sound → Speakers → Select External Audio System

Insignia Fire TV & Toshiba Fire TV

- 1, TV Settings → Display & Sounds → Audio Output → TV speakers → Select OFF
- 2, TV Settings → Display & Sounds → Audio Output → Digital Audio Format → Select PCM

Panasonic TV

- 1, Menu → Audio Settings → Advance Audio → TV speakers → Select OFF
- 2, Menu → Audio Settings → Advance Audio → Digital Audio Out → Select PCM

Roku TV Stick

- 1, Setting → Audio → Digital Output Format → Select Stereo
- 2, Setting → Audio → Audio Mode → Select Stereo

Fire TV Stick

- 1, Settings → Display & Sounds → Audio → Surround Sound → PCM

Kindly Note: TV settings may differ according to TV models difference, if the listed method can not work, or your TV is not listed, please contact us via service mail: support@wogree.com, or contact the TV manufacturer for help, thank you!

4B AUX

Here are two ways that you can use the AUX jack to setup a soundbar.

1, use the 3.5mm to 3.5mm cable (supplied) connect the soundbar AUX jack to your TV headphones jack.

2, use the RCA to 3.5mm cable (not supplied) connect the soundbar AUX jack to your TV AUX(L/R, red and white) jack.

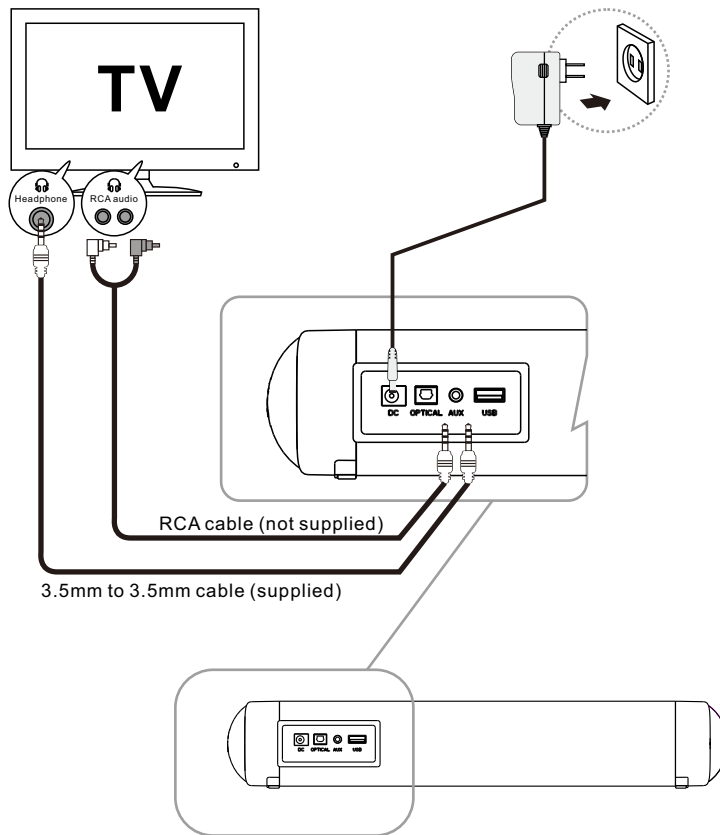
Please just choose one way to connect, then follow the below instruction to set up the soundbar:

Step 1, choose line in cable(3.5 to 3.5mm) or RCA cable connect the soundbar to your TV.

Step 2, Turn on the sound bar, press the mode on the sound bar remote, select AUX on LED display.

Step 3, Turn on the TV, press the home (or menu) on the TV remote, go to TV setting→audio(sound)→TV speaker--select external speaker(turn on TV speaker), save the setting.(For some TVs, please back to audio(sound)→select analog output→select the "Variable", save the setting).

Step 4, Play TV show to test the sound bar.



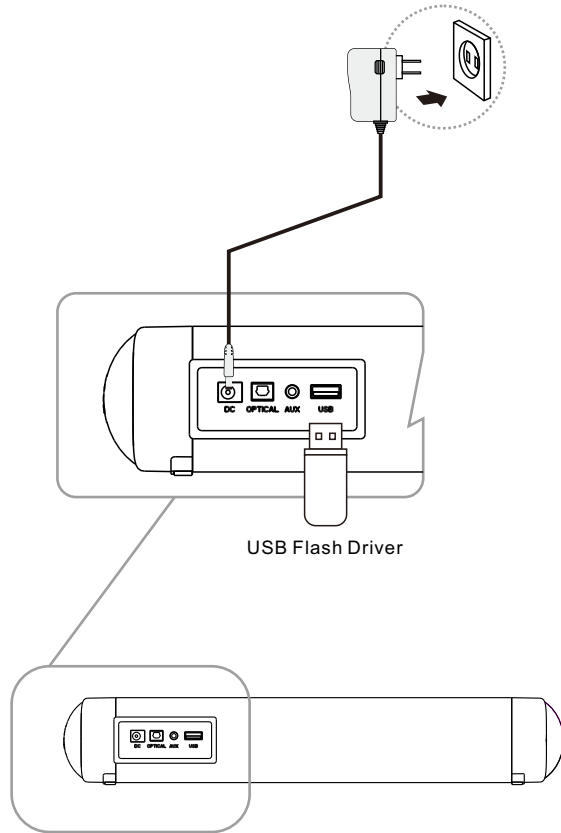
5

USB

Connect your USB drive to the USB jack on the Soundbar.

Press mode on the soundbar remote, select USB on the LED display.

Kindly Note: only for USB flash drive to play MP3 music and update firmware, can not compatible with other usb devices.

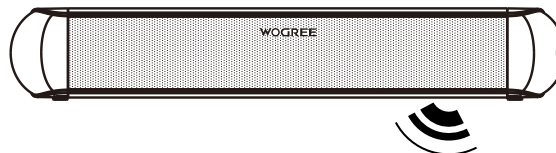


6

Pair with your BT device

The initial connection

1. Press mode on the soundbar remote, select BT on the LED display.
2. Turn on BT on the BT device. (see the device's manual for more information)
3. Select "WOGREE S60" from the device BT list, connect it. When your BT device is connected, the LED will stop flash.
4. Play music files from the connected device via BT, through the Soundbar.
 - The soundbar only support one BT device at a time.
 - If your device requests a password, enters the default "0000".



BT Device

No Sound	<ol style="list-style-type: none"> 1: Please check if the soundbar is consistent with the input mode of sound source by following the manual 2: Press the "Volume+" button on the remote or soundbar to volume up 3: Please check the output devices if the output of sound source is working 	Please make sure all the soundbar ports are input ports and all the connected devices are audio output.
No Sound when TV is connected with optical	<ol style="list-style-type: none"> 1: Set up the optical output 2: Set up the audio output format--PCM 3: Adjust to optical mode, and the LED will show OPT 4: Please check if the optical is connected with TV effectively 5: Volume up the soundbar 	Please take out the transparent antidust caps on two sides of optical. One side of optical indicates the white lightning when TV is connected well, and then plug the other side of optical into the optical port of soundbar.
Devices can't connect with BT	<ol style="list-style-type: none"> 1: Adjust to BT mode, and the LED will show the BT 2: Reboot the cellphone or BT devices, search again 3: Please make sure the soundbar is disconnected with other BT devices, shut off and try again. 4: Please check if there is strong interfering signal around, such as: WIFI, 2.4G; Try to use in other space. 5: Please try to use other BT devices to test if the BT device has problem of its own. 	The BT is only connected with one device, other devices can't search it when it has connected.
BT connection is unstable	<ol style="list-style-type: none"> 1: Please check if there is strong interfering signal around, such as: WIFI, 2.4G; Try to use in other space. 2: Reboot the cellphone or BT devices, then reconnect 3: Please make sure there is no obstacle between the soundbar and BT device in case of blocking the signal. 4: Power off the soundbar and then reboot. 	Please make sure there is no signal interference around the product.

<p>The remote is not working</p>	<ol style="list-style-type: none"> 1: Please check if the positive and negative of battery is right. (There is noted on the battery's compartment) 2: Please check if the receiving location is blocked under the LED on soundbar. 3: The working distance of remote is 6-8m (empty space) 	
<p>The sound is low or bad</p>	<ol style="list-style-type: none"> 1: Please make sure if the volume of output device is high. 2: Please try to play with other devices to test if the working device has problem of its own. 3: The product is designed for home, it would be much better if the space is moderate. 	<p>The location of sound bar can affect your experience in some extent.</p>
<p>The sound is inconsistent with the sound of TV</p>	<p>Please set up and shut off the sound of TV</p>	<p>Check the TV's manual.</p>
<p>Cracking sound or popping sound when play video from Amazon Prime Video, Youtube, HBO, Netflix or other streaming video APPs</p>	<p>This soundbar don't support Dolby and DTS, please disable the Dolly and DTS, if you do not know how to set, please contact the APP support</p>	

8

Important Notes About Service

9

Specifications

Figures and illustrations in this User Manual are provided for reference only and may differ from actual product appearance.

Sound Bar	2 Full-band speakers
Inputs	One 3.5mm, One USB, BT (Wireless), One Optical
Frequency Response (System)	50 Hz to 16 KHz
Compliances	FCC
Place of Origin	China

Thanks for reading!

For more information, please feel free to contact us:

Web: www.wogree.com

Email: support@wogree.com

NOTE: One year warranty, 45 days money back guarantee, lifetime technical support, 100% satisfaction service, please feel free to contact us for any questions.

尺寸: L184×W134MM

材质: 157双粉

工艺: 专色+黑色印刷

COLOR:pantone1925u