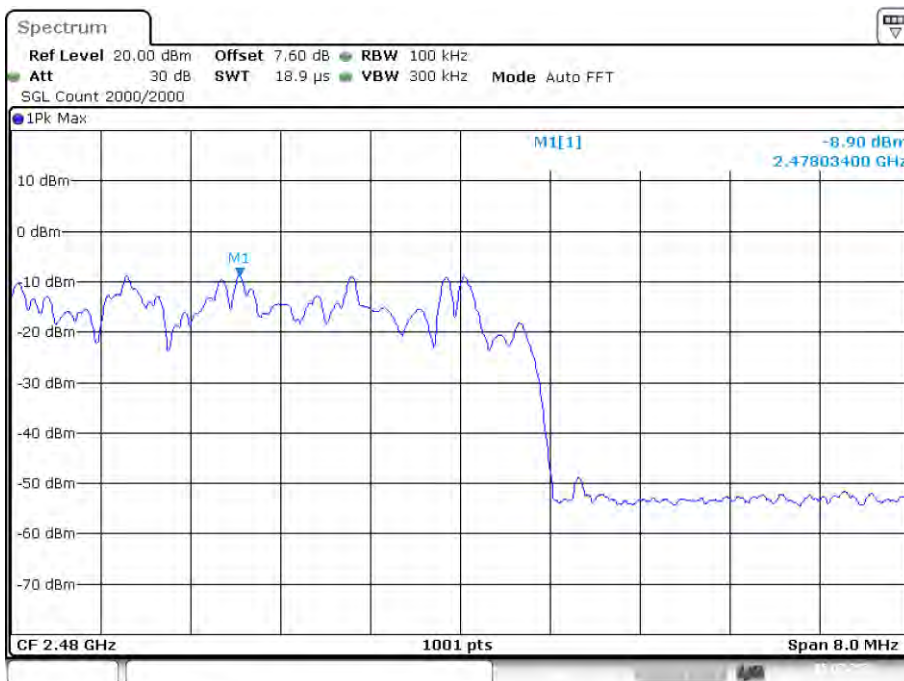
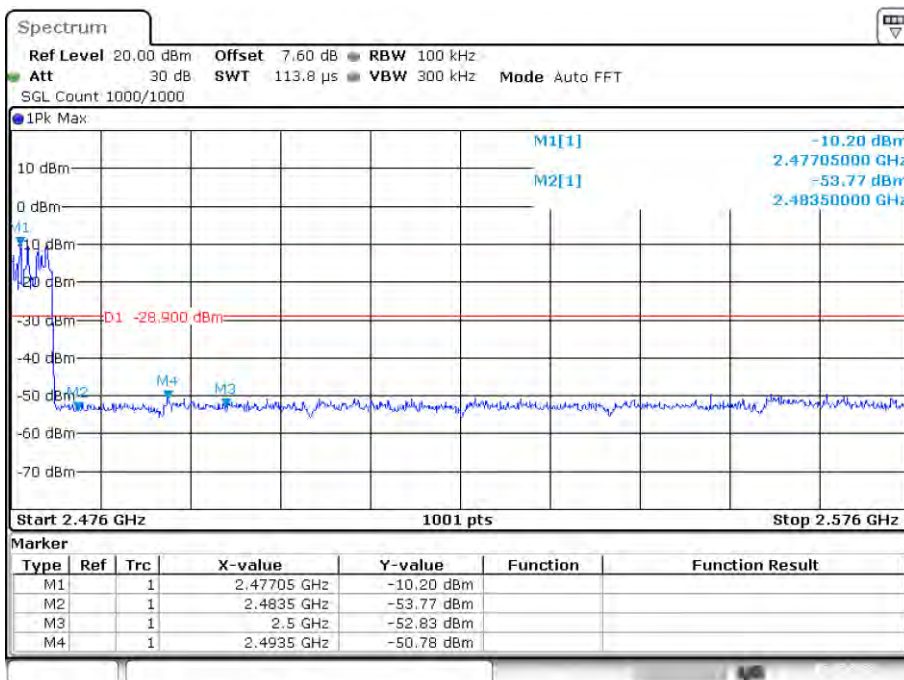


Band Edge(Hopping) NVNT 3-DH1 2480MHz Ant1 Hopping Ref



Date: 5.JUL.2023 15:09:21

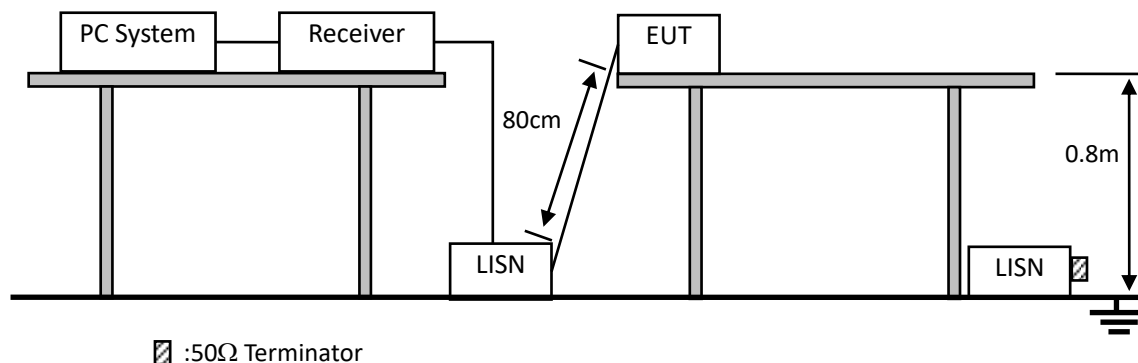
Band Edge(Hopping) NVNT 3-DH1 2480MHz Ant1 Hopping Emission



Date: 5.JUL.2023 15:09:50

## 10. POWER LINE CONDUCTED EMISSIONS

### 10.1. Block Diagram of Test Setup



### 10.2. Limit

Frequency	Maximum RF Line Voltage	
	Quasi-Peak Level dB( $\mu$ V)	Average Level dB( $\mu$ V)
150kHz ~ 500kHz	66 ~ 56*	56 ~ 46*
500kHz ~ 5MHz	56	46
5MHz ~ 30MHz	60	50

Notes: 1. \* Decreasing linearly with logarithm of frequency.

2. The lower limit shall apply at the transition frequencies.

### 10.3. Test Procedure

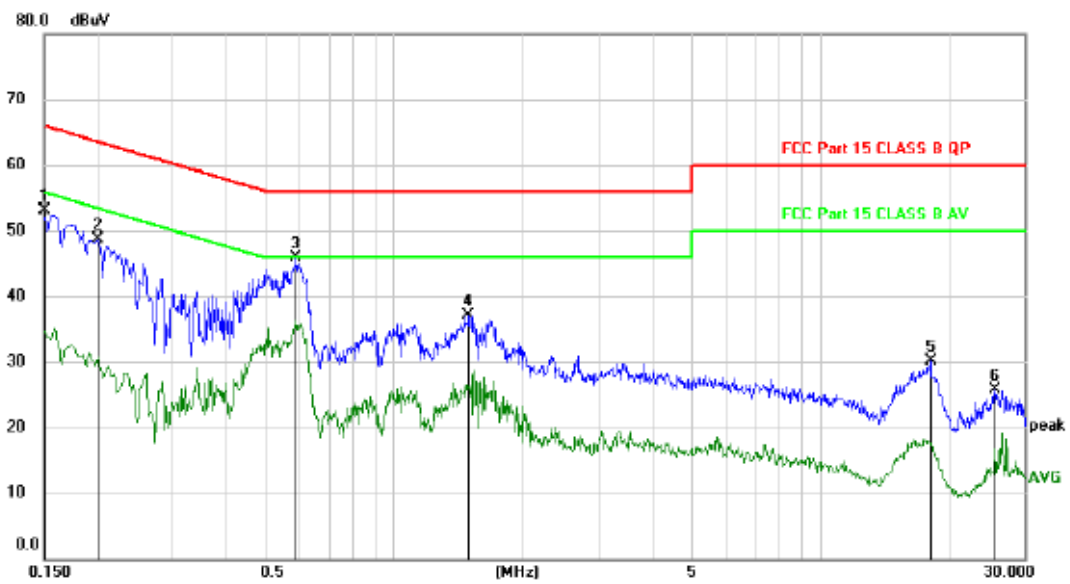
- (1) The EUT was placed on a non-metallic table, 80cm above the ground plane.
- (2) Setup the EUT and simulator as shown in 10.1
- (3) The EUT Power connected to the power mains through a power adapter and a line impedance stabilization network (L.I.S.N1). The other peripheral devices power cord connected to the power mains through a line impedance stabilization network (L.I.S.N2), this provided a 50-ohm coupling impedance for the EUT (Please refer to the block diagram of the test setup and photographs). Both sides of power line were checked for maximum conducted interference. In order to find the maximum emission, the relative positions of equipments and all of the interface cables were changed according to ANSI C63.10 :2013on conducted Emission test.
- (4) The bandwidth of test Receiver is set at 10KHz.
- (5) The frequency range from 150 KHz to 30MHz is checked.

### 10.4. Test Result

Pass

Note: If peak Result comply with AV limit, QP and AV Result is deemed to comply with AV limit

Line:

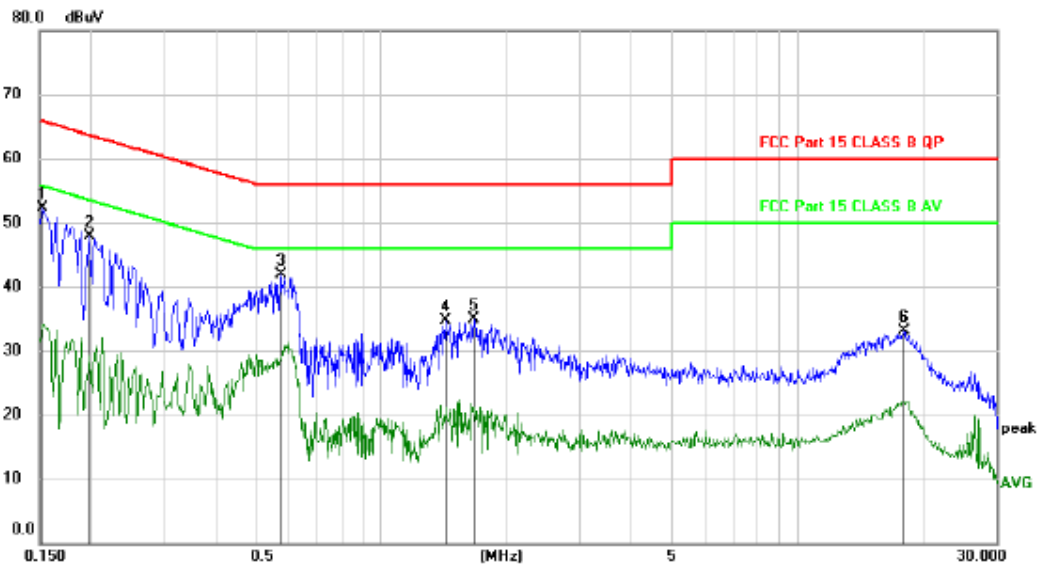


No.	Mk.	Freq. MHz	Reading Level dBuV	Correct Factor dB	Measure- ment dBuV	Limit dBuV	Margin dB	Detector	Comment
1		0.1500	43.30	9.83	53.13	66.00	-12.87	peak	
2		0.2010	38.90	9.83	48.73	63.57	-14.84	peak	
3	*	0.5880	36.14	9.83	45.97	56.00	-10.03	peak	
4		1.4940	27.30	9.80	37.10	56.00	-18.90	peak	
5		18.1259	19.98	10.09	30.07	60.00	-29.93	peak	
6		25.6950	15.45	10.16	25.61	60.00	-34.39	peak	

\*:Maximum data x:Over limit !:over margin (Reference Only)

Note: Measurement=Reading Level+Correc Factor. Factor=(LISN or ISN or PLC or Current Probe)Factor+Cable

Neutral:



No.	Mk.	Freq. MHz	Reading Level dBuV	Correct Factor dB	Measure- ment dBuV	Limit dBuV	Margin dB	Detector	Comment
1	*	0.1530	42.39	9.83	52.22	65.84	-13.62	peak	
2		0.1980	38.08	9.83	47.91	63.69	-15.78	peak	
3		0.5730	32.08	9.83	41.91	56.00	-14.09	peak	
4		1.4250	24.94	9.81	34.75	56.00	-21.25	peak	
5		1.6680	25.03	9.78	34.81	56.00	-21.19	peak	
6		17.9460	23.07	10.09	33.16	60.00	-26.84	peak	

\*:Maximum data    x:Over limit    !:over margin    (Reference Only)  
 Note: Measurement=Reading Level+Correc Factor.    Factor=(LISN or ISN or PLC or Current Probe)Factor+Cable

Remark: This report only shall the worst case mode for GFSK 2402MHz, and the power supply mode is DC 15V from adapter with AC 120V/60Hz

## **11. ANTENNA REQUIREMENTS**

### **11.1.Limit**

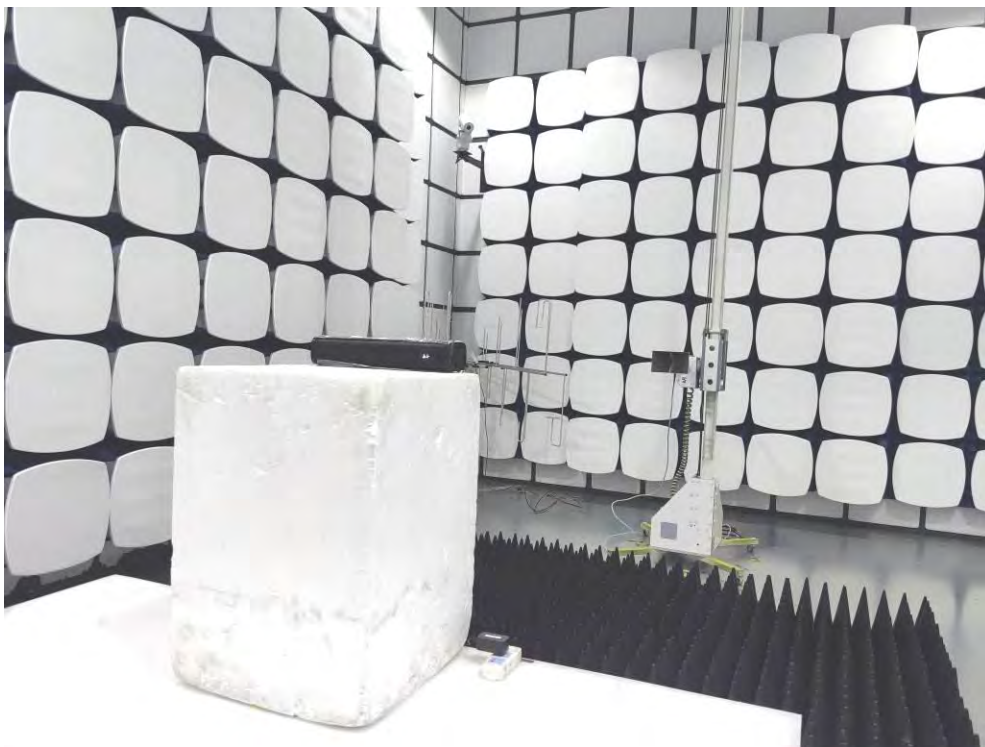
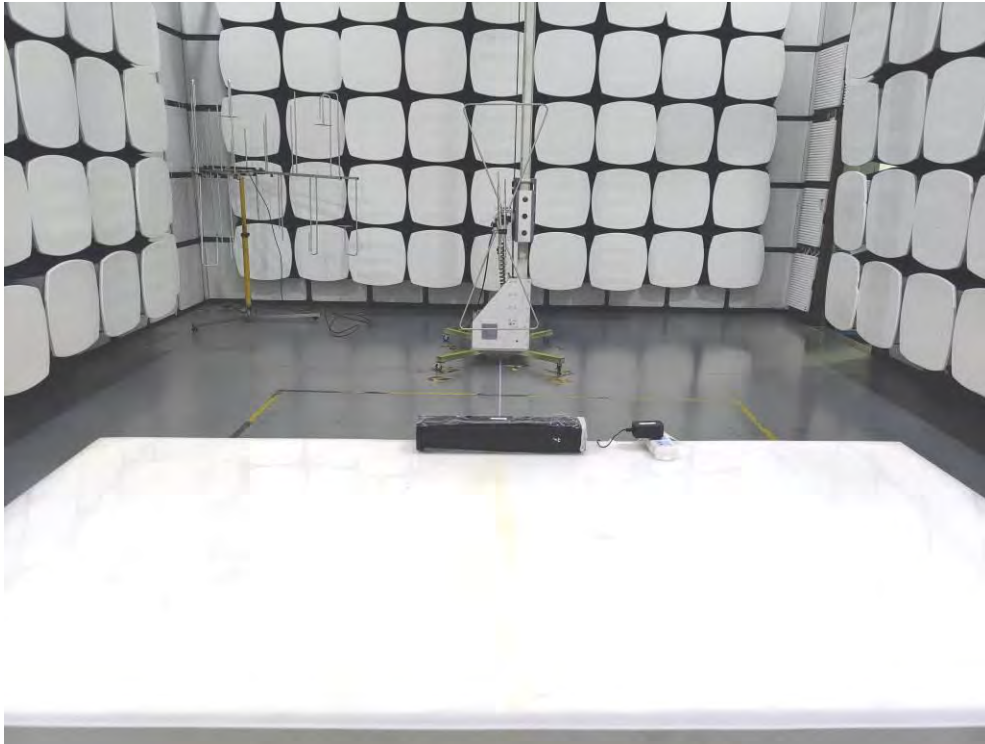
For intentional device, according to FCC 47 CFR Section 15.203, an intentional radiator shall be designed to ensure that no antenna other than that furnished by the responsible party shall be used with the device. And according to FCC 47 CFR Section 15.247 (b), if transmitting antennas of directional gain greater than 6dBi are used, the power shall be reduced by the amount in dB that the directional gain of the antenna exceeds 6dBi.

### **11.2.Result**

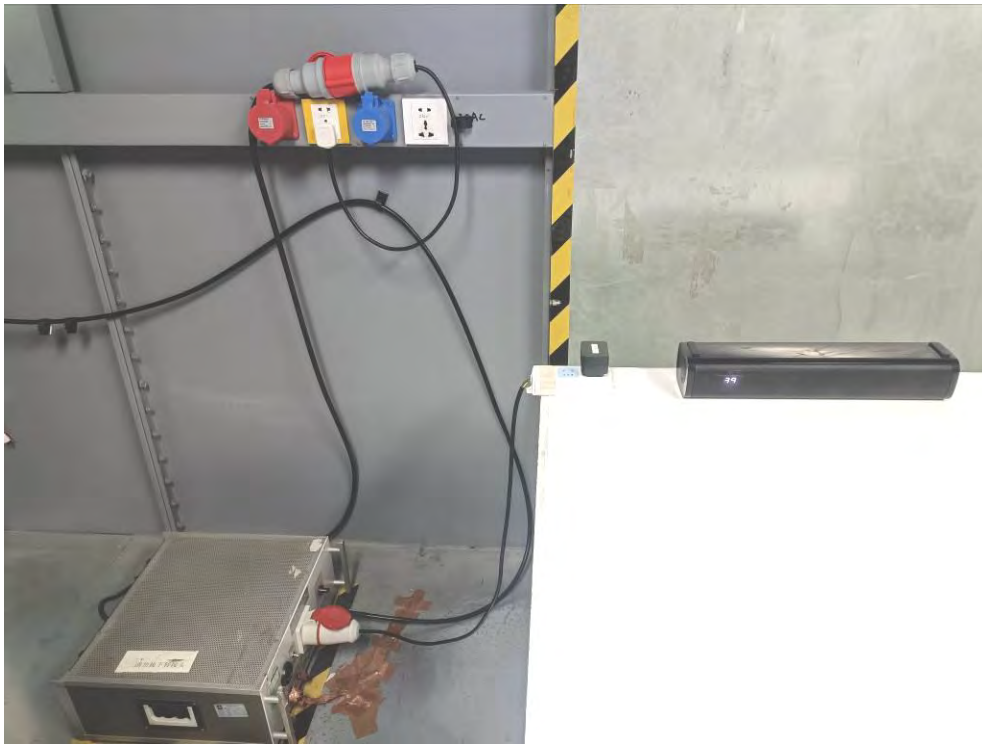
The EUT antenna is Internal Antenna. It complies with the standard requirement.

## 12. TEST SETUP PHOTO

### 12.1. Photos of Radiated Emission test



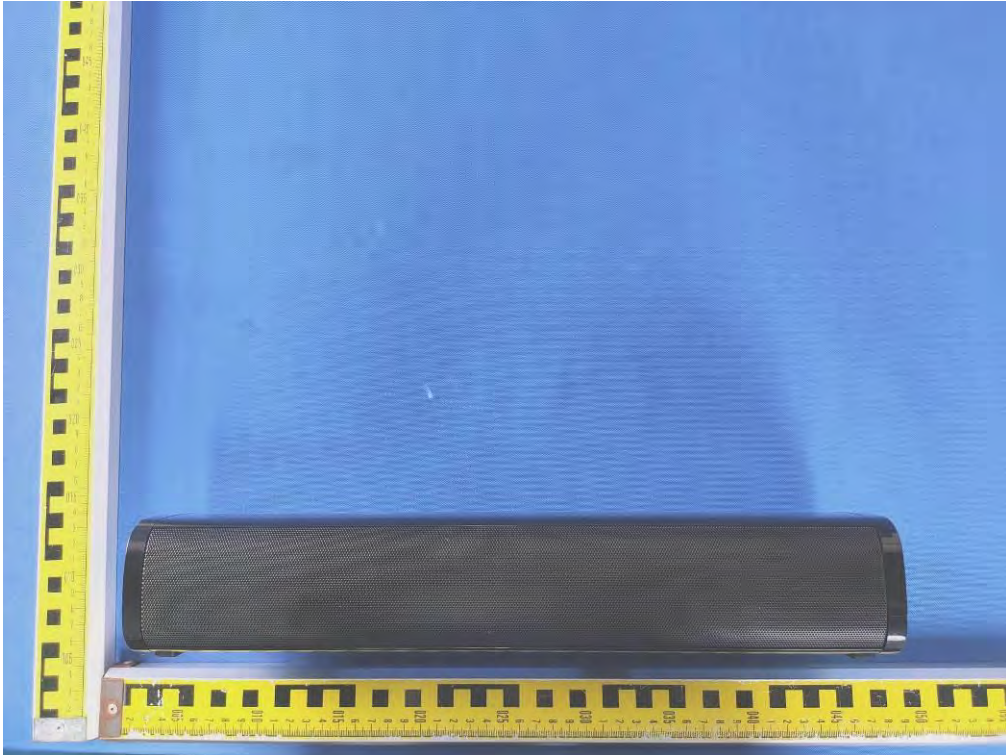
12.2.Photos of Conducted Emission test

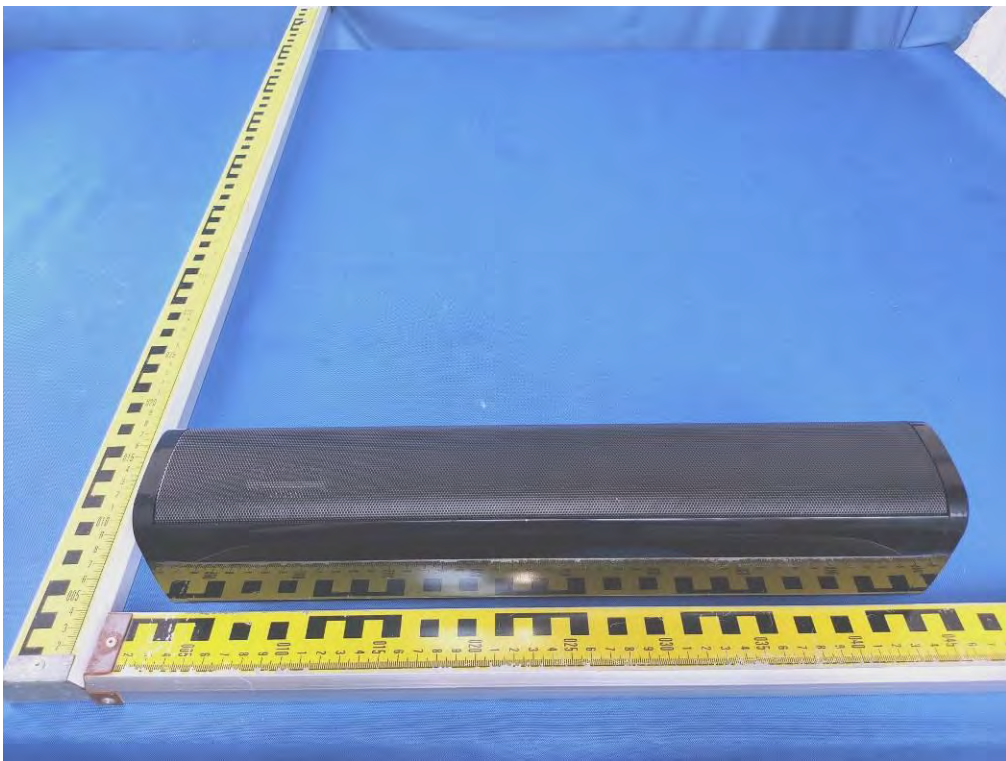


### 13. EUT PHOTO





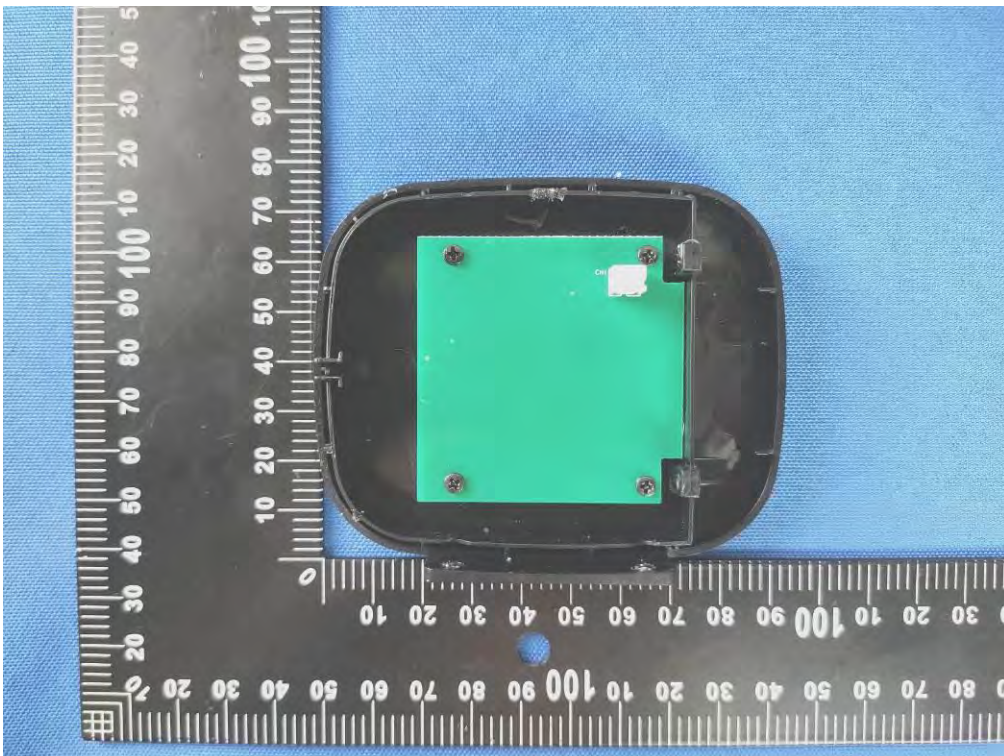


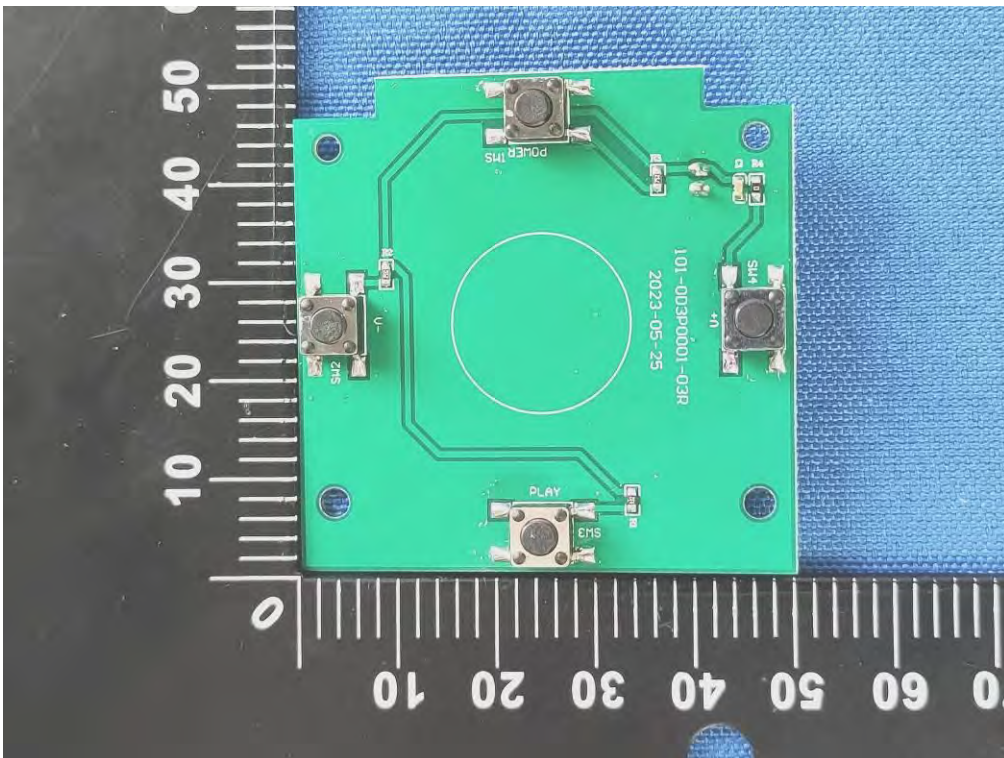
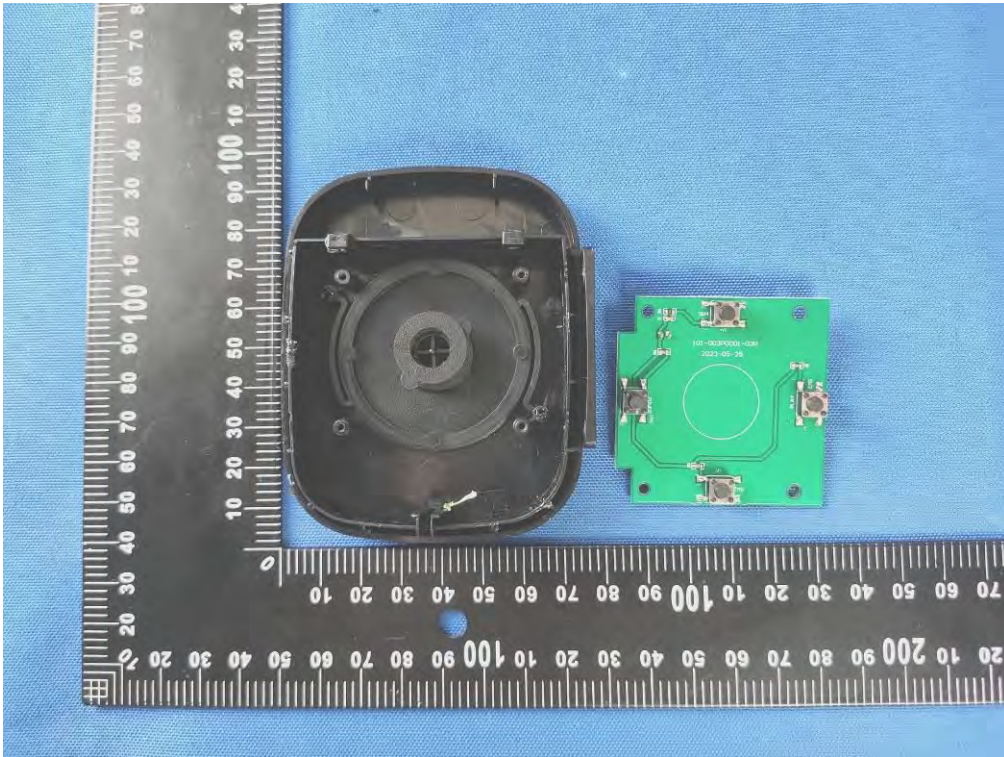


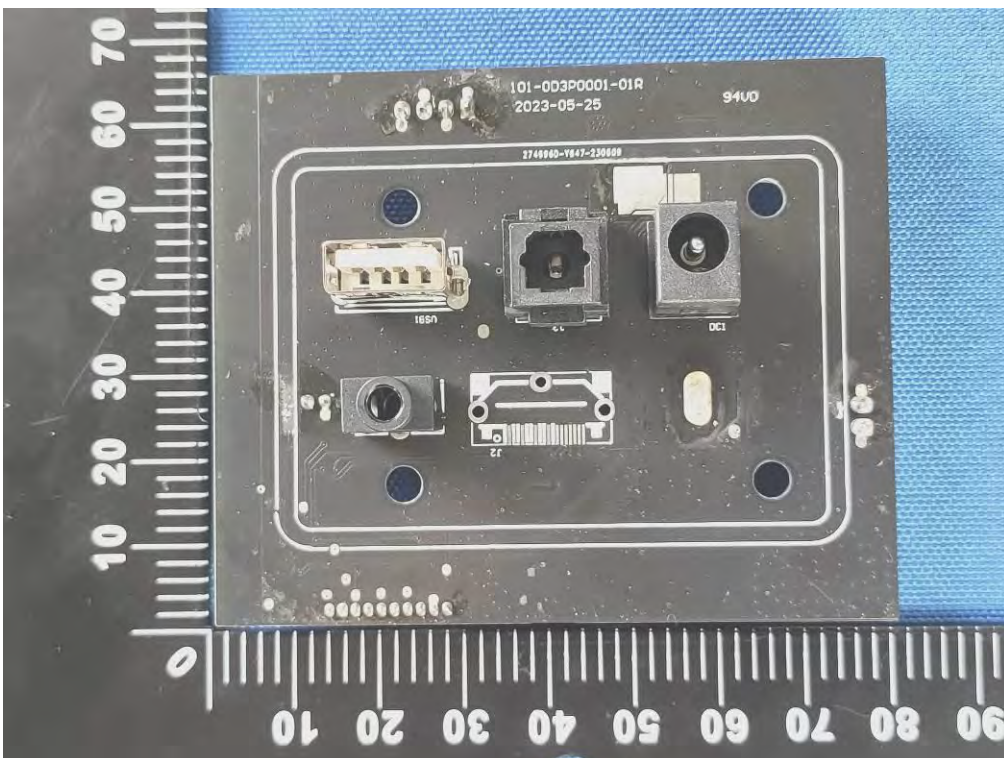
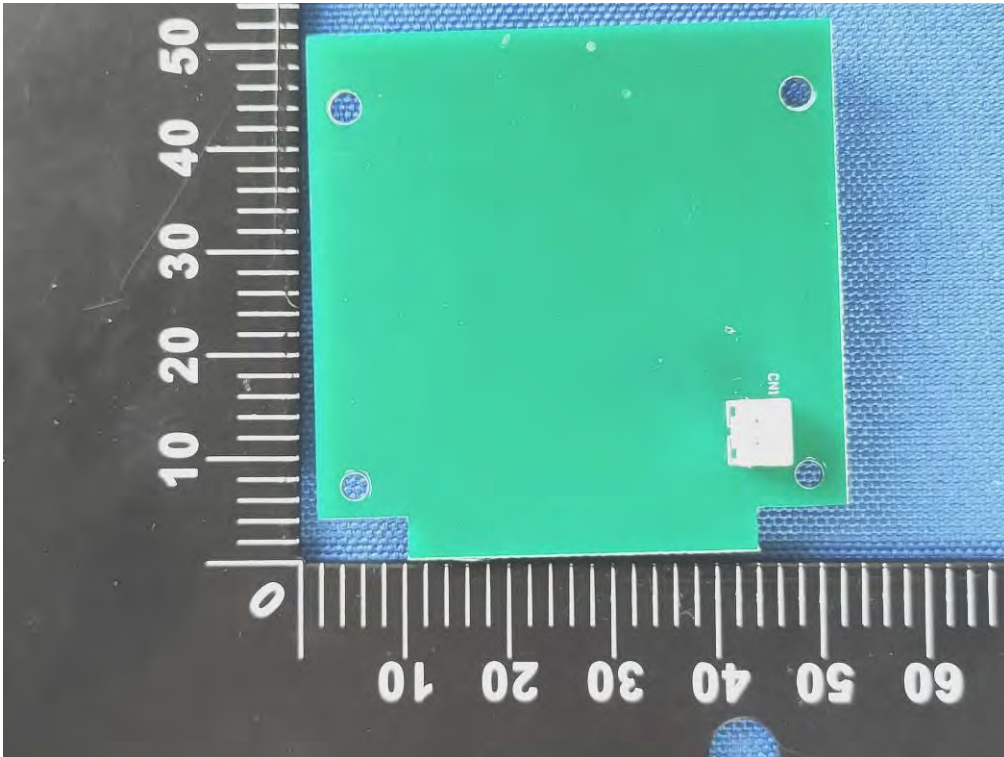




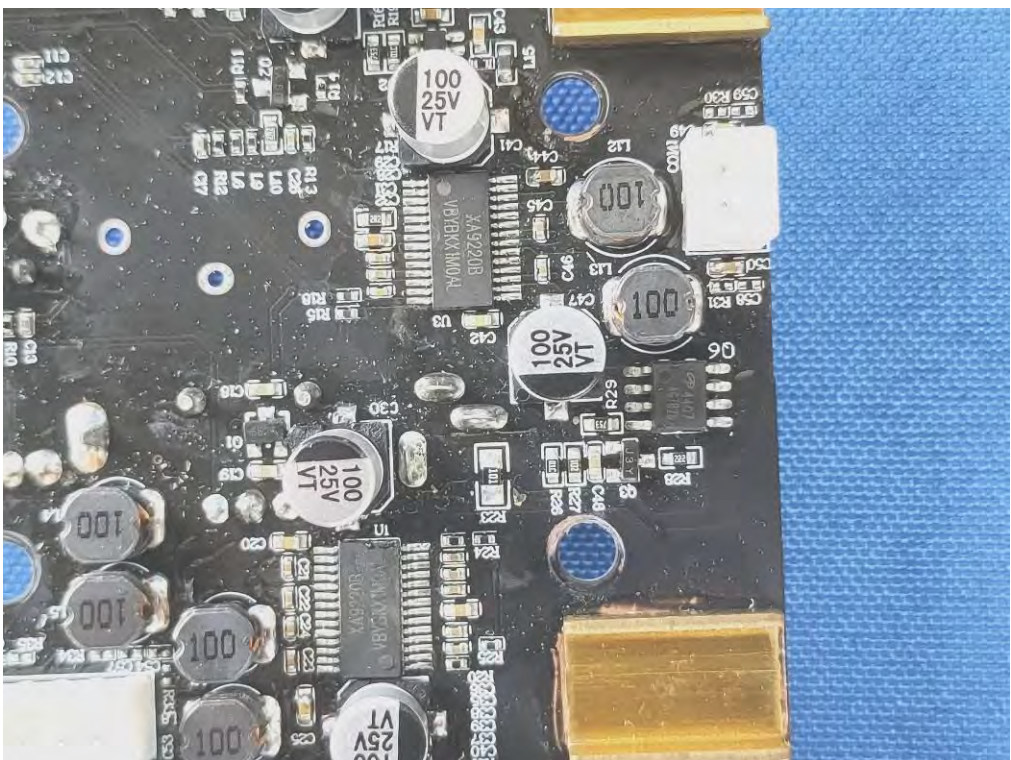
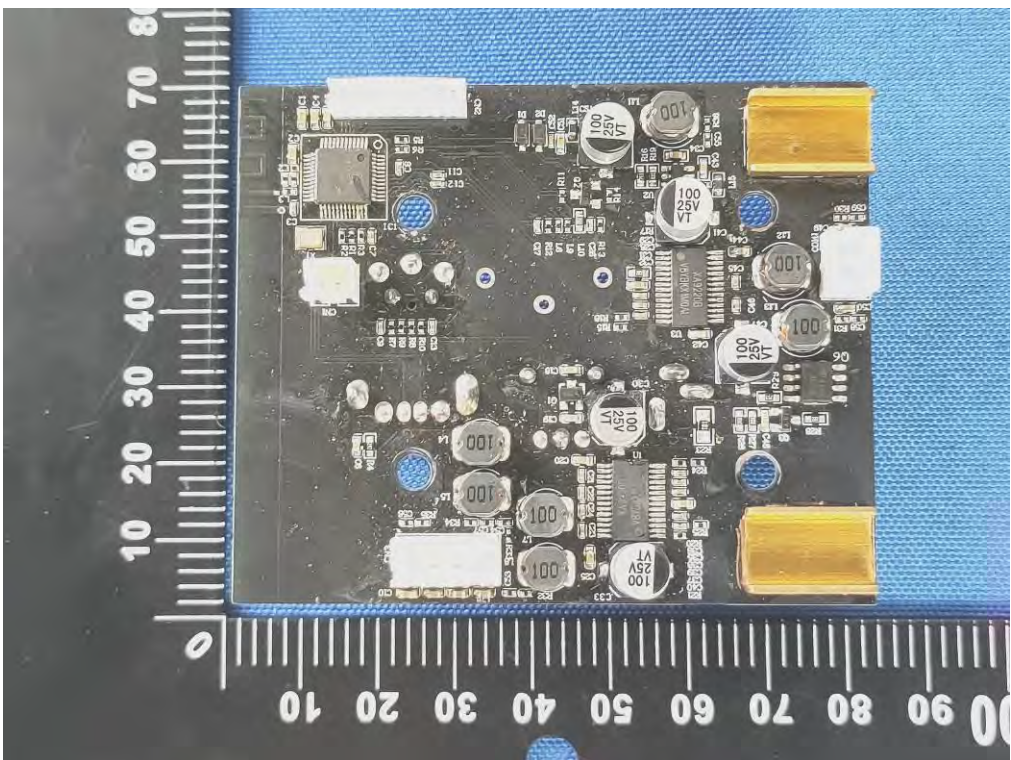


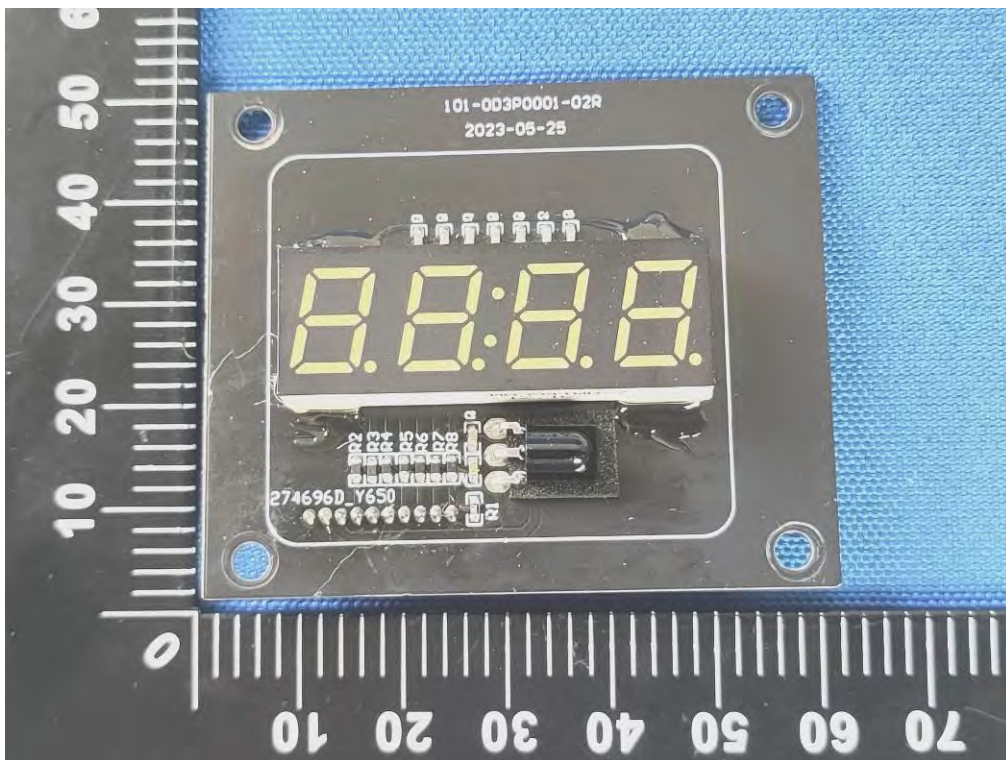
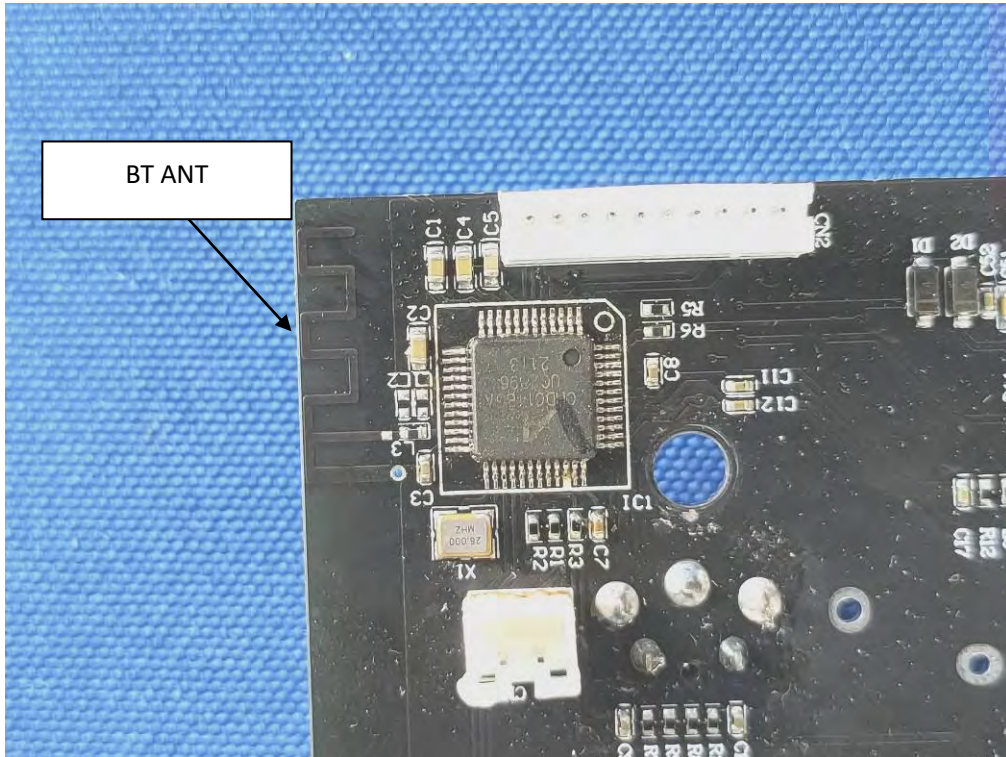


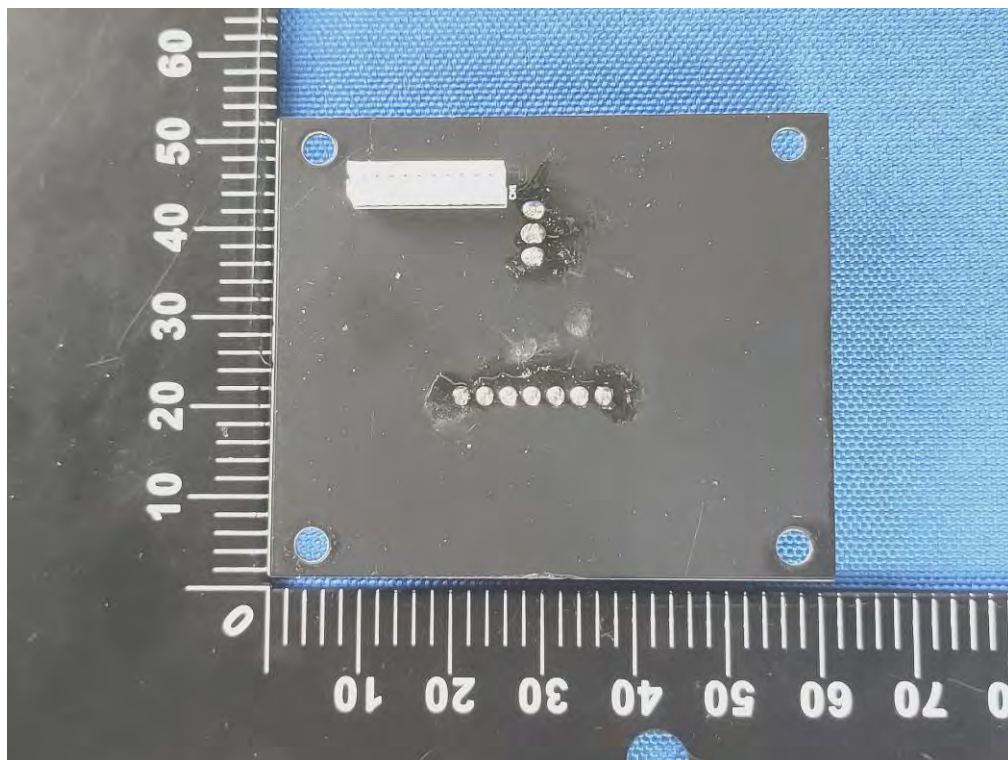












-----END OF REPORT-----