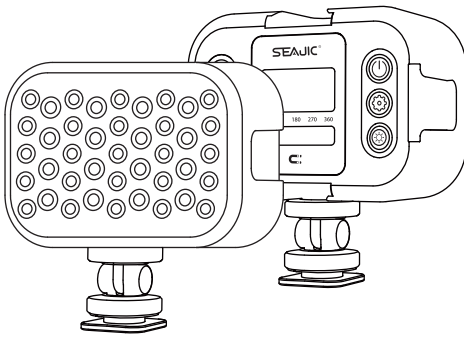


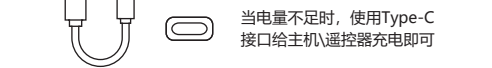
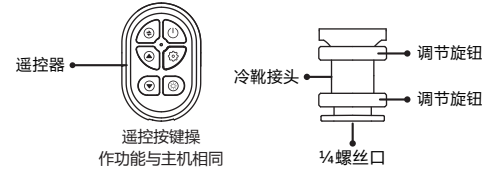
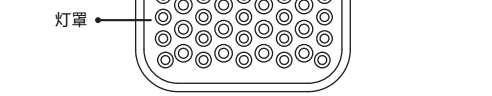
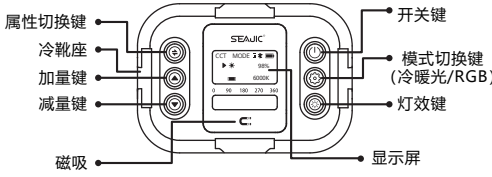
SEAJIC®  
口袋RGB补光灯  
Oth-AB503



官网: www.dgosmtech.com  
厂址: 东莞市塘厦镇科苑城田沙路6号龙迪产业园A栋  
执行标准: Q/OSL 001-2019



产品介绍



部分功能按键说明

开关键

长按3秒即可开机, 再次长按3秒关机。

模式切换键

按住此键可切换CCT MODE或HSI MODE

CCT MODE

亮度调节: 1%~100%亮度调节, 按“”或“”指向“”时, 按“”或“”调节亮度, 数字越大, 亮度越亮。

色温调节: 2500K-9900K可调节, 按“”或“”指向“”时, 按“”或“”可调节色温, 数字越小, 光线越偏暖白光, 数字越大, 光线越偏冷白光。

HSI MODE

亮度调节: 1%~100%亮度调节, 按“”或“”指向“”时, 按“”或“”调节亮度, 数字越大, 亮度越亮。

H 色环: 0-360种颜色可选择, 按“”或“”指向“H”时, 按“”或“”调节颜色。

S 饱和度: 0-100%饱和度可选择, 按“”或“”指向“S”时, 按“”或“”调节, 数字越大, 饱和度越高。

灯效键

按此键即可进入“SCENE MODE”, 共10种灯效光可选 (如下图), 依次按此键可选择您需要的灯效。



产品特性

360种颜色可选择

2500K-9900K冷暖灯光可调节

10种灯效光可选

本产品自带四个冷靴接口, 可多灯随意组合拼接

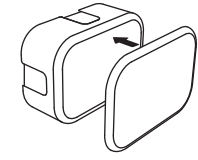
蓝牙10米范围内无线传输

蓝牙连接

长按主机开关键3秒开机, 再长按遥控器开关键3秒蓝灯亮起后即可自动连接。

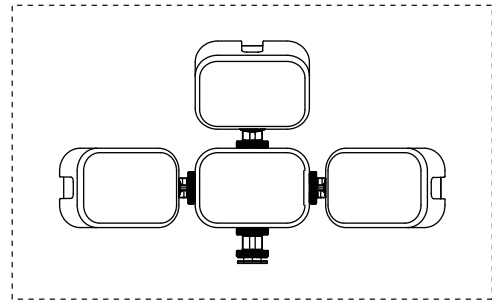
再次长按遥控器开关键3秒至蓝灯闪烁关闭蓝牙连接。

使用柔光罩



冷靴口使用说明

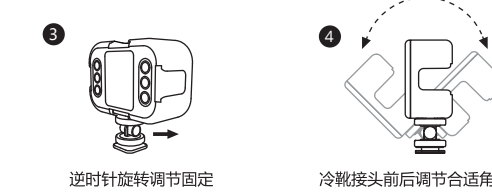
本产品自带四个冷靴接口, 可多灯随意组合拼接; 冷靴接头底部自带1/4” 螺丝口, 可连接其他带有1/4” 接口的产品。



冷靴接头安装



规格参数



磁吸

本产品背面自带磁吸功能, 可吸附在任意金属平面上。

产品型号	Oth-AB503
灯珠数量	25颗冷暖灯珠+16颗RGB灯珠
蓝牙距离	10米
续航时间	2-3小时 (亮度100%)
产品重量	90g(±10)
电池容量	2000mAh
产品材质	ABS(防火级) PC(防火级) 铝合金

安装APP

一. 扫二维码下载



二. 搜索\删除可用设备

1. 打开APP, 搜索设备“SEARCH DEVICE”, 依次点击可搜索多个可用设备

2. 按住“”往左滑动, 点击“EDIT”可更改设备名称, 点击“DELETE”可删除设备

三. 连接设备

控制当前设备连接/断开

控制当前设备开/关

四. 多灯组合连接

1. 点击“”进入“Group”界面, 点击下方的“”搜索可用设备, 选中可用设备创建多灯组合(如图一), 可同时连接五个设备

2. 创建多灯组合后弹出的方框中可更改组合灯的名称(如图二)



五. 调色界面

点击“”进入调色界面

将当前设置的灯光颜色参数同步到设备上

保存当前颜色

White Bright

“CCT MODE”模式切换, 同时显示当前颜色

CCT: 色温调节 Bright: 亮度调节

Color Bright

“HSI MODE”模式切换, 同时显示当前颜色

HSI RGB CMYK LAB

可以根据四种不同的颜色模型设置灯光颜色

调节HSI颜色模型的亮度

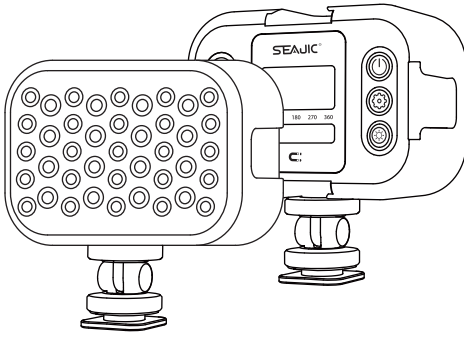
Color Panel 设置灯光颜色参数

内置预设不同的灯光颜色

Effect模式, 10种灯效光供选择

收藏的灯光颜色(保存的颜色可在此处查找)

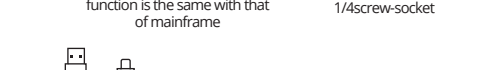
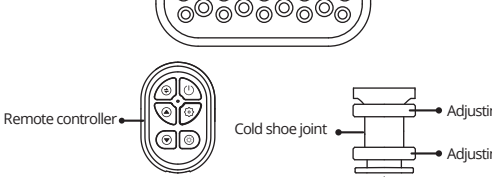
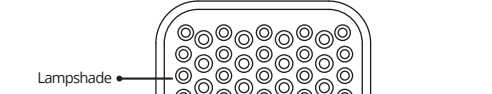
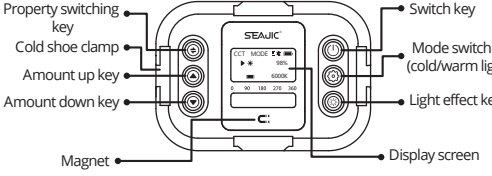
SEAJIC®  
Pocket Light User Manual  
Oth-AB503



Web: www.osmdigi.com  
Standard: Q/OSL 001-2019  
Made in China



Product Introduction



Instructions of Part of Functional Keys

ON/OFF Key

Long press for 3 s to start it up and long press for 3 s again to shut it down.

Mode switching key

Press this key to switch “CCT MODE” or “HSI MODE”.

CCT MODE

Luminance adjustment: 1% - 100% luminance adjustable. Press “” or “” When “” points to “” press “” or “” to adjust luminance. The bigger the number is, the higher the luminance will be.

Color temperature adjustment: 2500 - 9900K adjustable by pressing “” or “” When “” points to “” press “” or “” to adjust color temperature. The smaller the number is, the more warm-white the light will be. The bigger the number is, the more cold-white the light will be.

HSI MODE

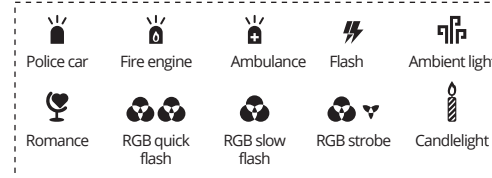
Luminance adjustment: 1% - 100% luminance adjustable. Press “” or “” When “” points to “” press “” or “” to adjust luminance. The bigger the number is, the higher the luminance will be.

H Color wheel: 0-360 colors optional by pressing “” or “” When “” points to “H”, press “” or “” to adjust color.

S Saturation: 0-100% saturation optional by pressing “” or “” When “” points to “S”, press “” or “” to adjust saturation. The bigger the number is, the higher the saturation will be.

Light effect key

Press this key to enter “SCENE Mode”. 10 light effects optional (see figure below). Press this key in turn, to choose light effect you need.



Product Features

360 colors optional

2500K - 9900K cold-warm light adjustable

10 light effects optional

With 4 cold shoe joints, the Product can be spliced freely.

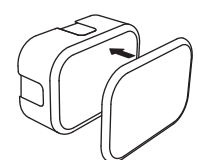
Wireless transmission within 10 m scope of Bluetooth

Bluetooth Connection

Long press mainframe ON/OFF key for 3 s to start up and then long press remote controller ON/OFF key for 3 s, and blue lamp will be on and Bluetooth can be connected automatically.

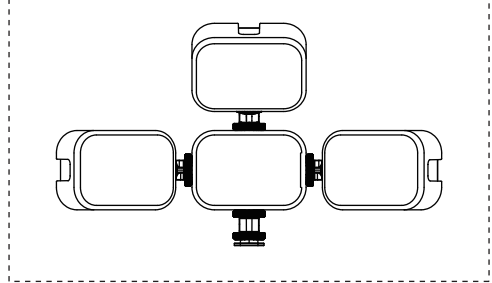
Long press remote controller ON/OFF key for 3 s, and blue lamp will flicker and Bluetooth will be disconnected.

Beauty Dish Use

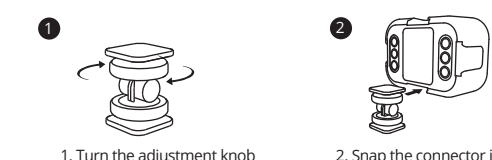


Use instructions of Cold Shoe Interface

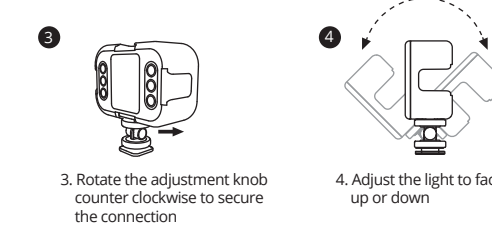
With 4 cold shoe interfaces, the Product can be sliced freely. The built-in 1/4 screw-sockets at the bottom of cold shoe interface helps the Product connect other products with 1/4 interface.



Cold Shoe Connector Installation



Specifications/ Parameters



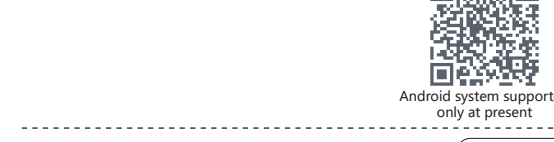
Magnet

Designed with magnet function on the back, the Product can be absorbed onto any metal plane.

Product Model	Oth-AB503
Number of Light Beads	25 cold/warm light beads + 16 RGB light beads
Bluetooth Distance	10m
Endurance	2-3h (luminance 100%)
Product Weight	90g(±10)
Battery Capacity	2000mAh
Product Material	ABS (fireproof grade) PC (fireproof grade) Aluminum

Install APP

I. Scan QR code to download



II. Search/delete available device

1. Open APP, search device “SEARCH DEVICE” and click in turn Multiple available devices could be searched

2. Press “” to slide to the left, click “EDIT” to change device name, click “DELETE” to delete device

III. Connect Device

Control connection/disconnection of current device

Control ON/OFF of current device

IV. Multi - lamp Combination and Connection

1. Click “” to enter “Group” interface, click “” below to search available device; then select available device Create multi-lamp combination (see Fig. 1), and five devices could be connected at the same time

2. After creating multi-lamp combination, combination lamp name can be changed in the box that pops out (See Fig. 2)



V. Toning Interface

Click “” to enter toning interface

Synchronize the present light color parameters to device

Save the present color

White Bright

“CCT MODE” mode switching and current color display

CCT: Color temperature adjustment Bright: Luminance adjustment

Color Bright

“HSI MODE” mode switching and present color display

HSI RGB CMYK LAB

Set light color according to four different color models

Adjust luminance of HSI color model

Color Panel Set light color parameters

Built-in preset different light colors

Effect mode, 10 light effects available

Collected light color (find saved colors here)

FCC Caution

This device complies with part 15 of the FCC Rules. Operation is subject to the following two conditions: (1) This device may not cause harmful interference, and (2) this device must accept any interference received, including interference that may cause undesired operation.

Any Changes or modifications not expressly approved by the party responsible for compliance could void the user's authority to operate the equipment.

Note: This equipment has been tested and found to comply with the limits for a Class B digital device, pursuant to part 15 of the FCC Rules. These limits are designed to provide reasonable protection against harmful interference in a residential installation.

This equipment generates uses and can radiate radio frequency energy and, if not installed and used in accordance with the instructions, may cause harmful interference to radio communications. However, there is no guarantee that interference will not occur in a particular installation. If this equipment does cause harmful interference to radio or television reception, which can be determined by turning the equipment off and on, the user is encouraged to try to correct the interference by one or more of the following measures:

-Reorient or relocate the receiving antenna.

-Increase the separation between the equipment and receiver.

-Connect the equipment into an outlet on a circuit different from that to which the receiver is connected.

-Consult the dealer or an experienced radio/TV technician for help.

The device has been evaluated to meet general RF exposure requirement. The device can be used in portable exposure condition without restriction.

Z2020G50145W0  
AB503说明书 (折页)  
成品尺寸: 150X100mm 展开尺寸: 750X100mm  
80g书写纸 单黑印