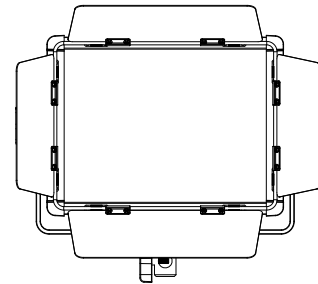


VILTROX

User Manual

WP35
weeylite

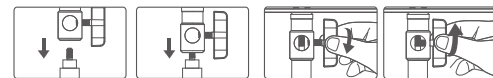


Professional LED Photographic Light

Thank you for using VILTROX fill light

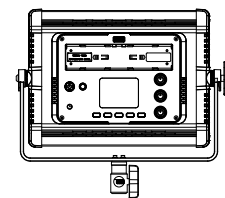
Please read this manual carefully
In order to be able to understand and use the full
function of the fill light

Before Use



1. Fix the U-shaped bracket on the stand
2. Rotate the knob to install the fill light on the light stand, and then tighten and rotate as shown in the picture

3. There are two power supply modes for your choice. Lithium battery can be used outdoor when DC power supply is inconvenient and appropriate power adapter can be used indoor.



(1) Lithium battery: According to the lithium battery model marked on the fill light, fix the lithium battery.
(Note: Two lithium batteries must be installed for the fill light to work)

(2) DC power supply: Select the correct power adapter according to the power supply specifications shown on the fill light. After connecting the power adapter, plug in the power according to the mark on the fill light.

Main Features

WP35 is a professional photography fill light with selected high CRI lamp beads and preferred RGB, low power consumption, stable color temperature, and the ratio of color temperature and brightness can be adjusted arbitrarily. It is easy to carry and suitable for shooting in various scenes, and can meet your shooting needs of more scenes.

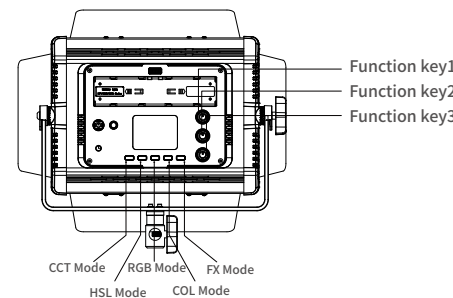
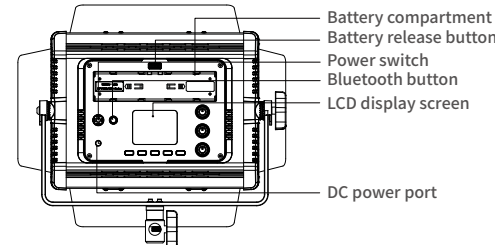
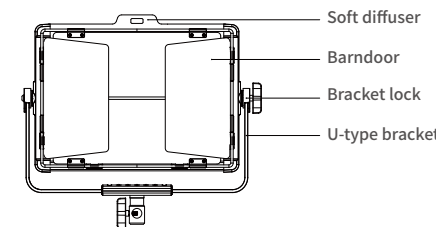
○ High color rendering index bi-color LED lamp beads.

○ Dual power supply system, powered by lithium battery or DC power supply.

○ Dot matrix LCD screen, display more intuitive.

○ A variety of dimming methods, host control / mobile APP control / RC-11 remote control (sold separately).

Parts Identification



Operation Description

CCT Mode

CH GR CCT
DIM 26%
CCT 3600K
R/G 0

Power adjustment: turn left and right (function key 1) to add and subtract items. Press (function key 1) to increase power by 25% each time it is pressed.

Color temperature adjustment: turn left and right (function key 2) to add or subtract items. Press (function key 2) to increase the color temperature by 800k each time it is pressed.

R/G: turn left and right (function key 3) turn left to increase the red light, Turn right to increase the green light.

HSL Mode

CH GR HSL
DIM 26%
HUE 359
SAT 0-100

Power adjustment: turn left and right (function key 1) to add and subtract items. Press (function key 1) to increase power by 25% each time it is pressed.

Color adjustment: turn left and right (function key 2) to add or subtract items. Press (function key 2) to increase by 60 each time it is pressed.

Saturation: turn left and right (function key 3) , then turn right to increase light saturation.

RGBWY Mode

CH GR RGBWY
R: 0 W: 0
G: 0 Y: 0
B: 0

Item switching: turn left and right (function key 2) to switch items.
Turn (Function key 3) to switch the value under this item.

COL Mode

CH GR COL
E002 ROSCO
E007 LEE
E008 HOC
E036 26%

Function key 1: Adjust the power in this mode

Function key 2: Adjust color card function

Function key 3: Adjust the items under the color card

FX Mode

CH GR FX
SOS 26%

Function key 1: Adjust the power in this mode

Function key 2: Adjustment item

Function key 3: adjust the speed of light under this function

Bluetooth connection

channel number
Group number

CH GR 14 A
VER 1.0

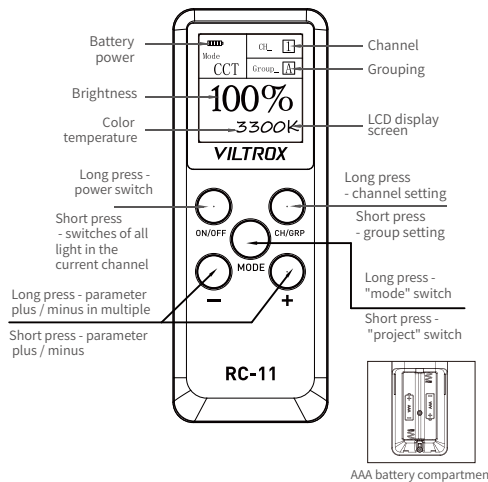
Long press (Bluetooth button) to enter Bluetooth mode, then press (Function key 2) to adjust the channel, (Function key 3) to adjust the group number.

Short press the function key 2: the channel returns to 1

Short press the function key 3: the group number returns to A

Channel set to -: not controlled by bluetooth

Remote Control



1. Long press RC-11 "power switch" for 2 seconds, waiting for the power turning on and the display screen being on.

2. Refer to the "controlled photographic light" and set it to the same "channel" and "group". (different "channel" or the "group" from the remote control and the light cannot be operated the LED photography light)

Channel setting - long press CH / GRP key for 2 seconds, press + / - key to select the required channel, then press "mode" again to confirm,
Group setting - short press "CH / GRP" key, you can choose A/B/C/D/E/F.

3. Long press "MODE" to switch one of four mode of CCT / HSL / RGBW / SCENE. HSL / RGBW/SCENE are RGB color mode, but some of product models may not support these three modes. Please use it in CCT mode.

4. Press + / - to adjust the power / color temperature . Press "MODE" You can switch between power / color temperature and other options.

5. After RC-11 is powered on, the power supply will shut down automatically after 30 minutes of inactivity.

Caution:

If RC-11 remote controller is not being used for a long time, please take off the battery and save it separately to avoid damage to components due to battery leakage.

Tips:

when shooting with multiple lights, do not change the channel setting after fixing the channel. Please set different lights into different "groups", such as group A for light A and group B for light B... Please do not set different lights to different "channels". It will be very troublesome to switch different channels frequently to adjust the lights. This may also occupy other people's channels, which is easy to cause mutual interference. It is the wrong way to use it.

Model	RC-11 Remote control
Frequency	2.4GHz Bluetooth wireless remote system
Control distance (in open air)	30 Meters
Wireless remote group	A, B, C, D, E, F
Channel	1-19
Stand-by time	30minutes without operation, it will off automatic
Environment temperature	-10-50°
Power	AAA 1.5V battery
Dimension	101mm×38mm×18mm
Weight	Approx37g (exclude batteries)

APP Operation

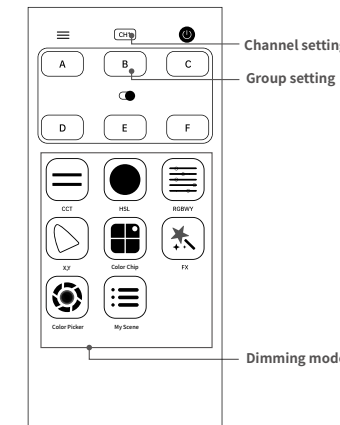


Scan QR codes to download on your Apple devices

Scan QR codes to download on your Android devices

1. Search "Weeylite Pro" in the "APP Store" of Apple OS, find the dimming APP, and download and install it to your phone.
2. For Android devices , scan QR code and download "Weeylite Pro" APP.

Preview of the APP'S Interface



The channel and group of the light should be consistent with the mobile bluetooth APP.

1. After keeping the Bluetooth of the mobile phone on, open the mobile APP "Weeylite Pro" and set the same channel number of the APP as the controlled light, and the group number is also set to the same as the controlled light. (If the channel number of the controlled light is 1, the channel number of the mobile phone APP is also 1, and the group number of the controlled light is A, the mobile phone APP also needs to be A. If the parameters are inconsistent, it can't be controlled).

Attention

1. Two batteries should be charged at the same time to keep the power balance.
2. Do not mix old and new batteries with different types; Please remove the battery when it's not used for a long time to prevent battery leakage.
3. Please keep dry and do not immerse the product in water or expose it to rain.
4. This product can not waterproof, please pay attention to waterproof in rainy days and humid environment.
5. Keep out of reach of children.
6. Do not use in flammable gas, violation of this warning may cause explosion or fire.
7. Please use a special charger for charging, and install the operation instructions correctly, and use in the specified voltage and temperature range.
8. It is forbidden to place it on the bed, sofa and other places which will affect heat dissipation or have more combustible materials. The machine will generate heat in the process of use, which will cause fire danger if it is flammable in close contact.
- 9 It is normal that the temperature of the machine is (about 60C) high during use.

Specifications

Model	WP35
Color temperature	2800 ~ 6800k
Brightness	0-100%
Max. luminous flux	3200Lux@0.5m
Max.luminous	3000Lm, 100/m
Lamp beads	648PCS
Power (max.)	30W
Group	6Groups (A, B, C, D, E, F)
Channel	1-19
Color rendering index	Ra ≥ 95, TLCI ≥ 97
DC adapter interface	DC Power port 5.5X2.5mm
Lithium battery	7.4V×2
Dimension	275×55×210mm
Weight	1158.5g

VILTROX Warranty Card

VILTROX International Warranty Card is an important document , in order to enjoy the product Warranty service, please present this warranty card and invoice during the warranty registration period .The original must be stamped by the company's authorized dealer.

For VILTROX designated maintenance stations and other consultation changes, please visit our company's website: www.viltrox.com Please keep this card properly, any loss will not be subsidized

Operative Standards: QJYKJ002-2019
Shenzhen Jueying Technology Co., Ltd.

TEL: +86-755-2877 9024 FAX: 0755-2877 4730
MAIL: info@viltrox.com URL: www.viltrox.com

Address: No. 1207, Floor 12, Building B, Zhantao Building, Minzhi Sub-district, Longhua District, Shenzhen
Production Address: Floor 3, Building 1, Simaiou Science Park, No. 54, Juyuan Road, Qichang Town, Huiyang District, Huizhou City, Guangdong Province

FCC STATEMENT :

This device complies with Part 15 of the FCC Rules. Operation is subject to the following two conditions:

This device may not cause harmful interference, and This device must accept any interference received, including interference that may cause undesired operation.

Warning: Changes or modifications not expressly approved by the party responsible for compliance could void the user's authority to operate the equipment.

NOTE: This equipment has been tested and found to comply with the limits for a Class B digital device, pursuant to Part 15 of the FCC Rules. These limits are designed to provide reasonable protection against harmful interference in a residential installation. This equipment generates uses and can radiate radio frequency energy and, if not installed and used in accordance with the instructions, may cause harmful interference to radio communications. However, there is no guarantee that interference will not occur in a particular installation. If this equipment does cause harmful interference to radio or television reception, which can be determined by turning the equipment off and on, the user is encouraged to try to correct the interference by one or more of the following measures:

- Reorient or relocate the receiving antenna.
- Increase the separation between the equipment and receiver.
- Connect the equipment into an outlet on a circuit different from that to which the receiver is connected.
- Consult the dealer or an experienced radio/TV technician for help.

FCC Radiation Exposure Statement:

This equipment complies with FCC radiation exposure limits set forth for an uncontrolled environment. This equipment should be installed and operated with minimum distance 20cm between the radiator & your body.