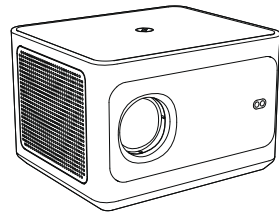
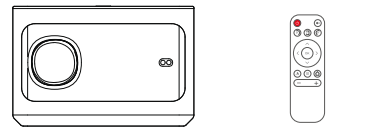


Projector Model:ZMLF2001

USER MANUAL



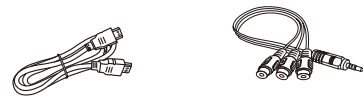
PACKING LIST



- 1 Projector
- 2 Remote



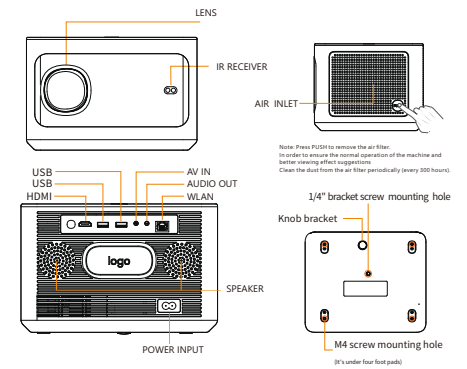
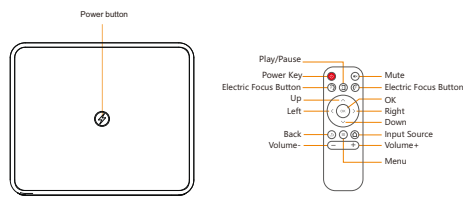
- 3 User Manual
- 4 Power Cable



- 5 HDMI Cable
- 6 AV Cable

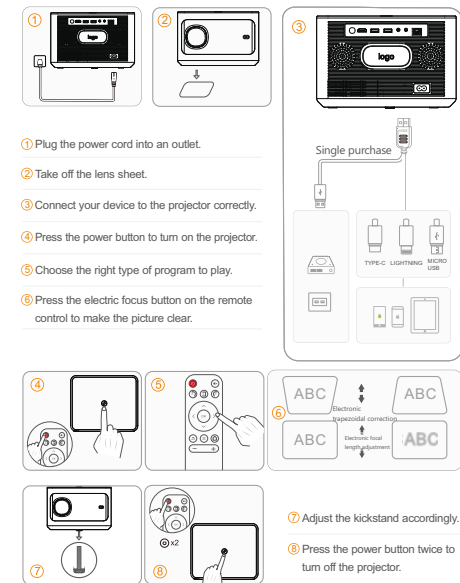
1

FUNCTION OVERVIEW



2

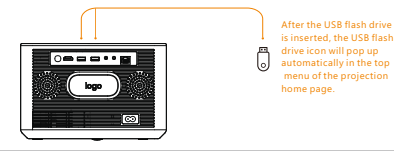
QUICK START



3

INPUT SOURCE

A Multimedia Connection

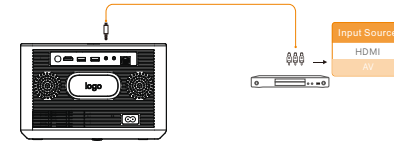


After the USB flash drive is inserted, the USB flash drive icon will pop up automatically in the top menu of the projection home page.

B HDMI Connection



C AV Connection



4

FUNCTION USE

1 Wi-Fi Connecting

Set up-Click wifi-Selection network-Enter the code-Done



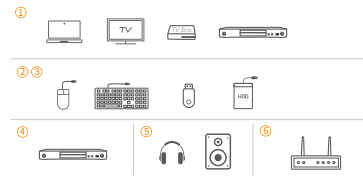
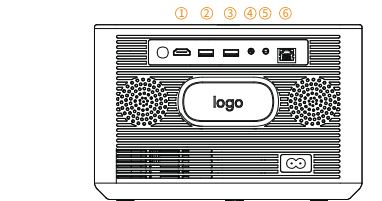
2 Bluetooth connection

Settings -- Bluetooth -- Connect other peripherals -- Manual search -- Done.

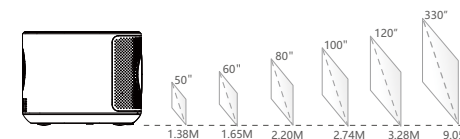


5

PROJECTOR CONNECTION



PROJECTION DISTANCE & SIZE



6

SPECIFICATION

Display Technology	Light Source	Native Resolution	Resolution Supported
LCD	LED	1920×1080	576i, 576P, 720i, 720P, 1080i, 1080P

Projection Distance	Projection Size	Focus	Aspect Ratio
1.38M-9.05M	50"-330"	Auto	4:3/16:9:auto

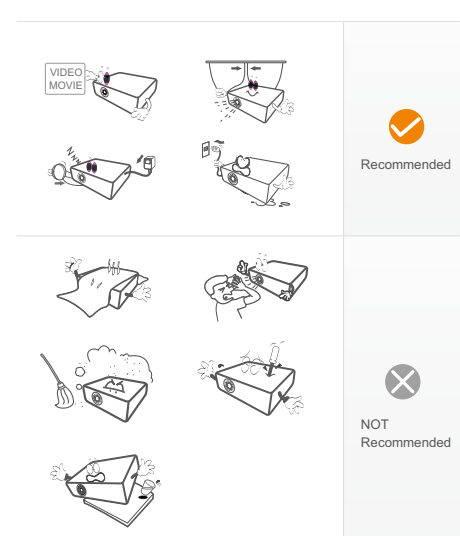
Speaker	Electronic Keystone	Unit Dimension	Installation Type
10W/4Ω*2	±50°	244*202.5*166mm	Front/Rear/Ceiling

Power Supply	Unit Net Weight	Video Format Supported	Photo Format Supported
AC 100-240V	3.0kg	VP9/H.265/AVS2-P2/H.264/MPEG-4/WMV/AVS-P16/MPEG-2/MPEG-1 Real Video 8/9/10	JPEG/BMP/PNG

Ports	Audio Format Supported
HDMI*1/USB*2/AV IN*1/Audio Out*1/Rj45 port*1	MP3/WMA/OGG/AAC/FLAC/ARM

7

NOTICE



8

TROUBLESHOOTING GUIDE

- 1.BlurryImage**
*Press the electronic focus button on the remote control to adjust.
*Projector and screen/wall must be in effective distance.
- 2.Remote Unresponsive**
*Make sure remote points at IR receiver directly.
*Do not cover IR receiver.
*Check the battery.
- 3.Mobile Connection**
iOS: Genuine lightning to HDMI cable.
Android: Micro USB to HDMI adapter/Type C to HDMI cable.
- 4.Upside DownImages**
Enter "Menu" on projector or remote to flip the projection image.

9

FCC Statement
This device complies with Part 15 of the FCC Rules. Operation is subject to the following two conditions:
(1) This device may not cause harmful interference.
(2) This device must accept any interference received, including interference that may cause undesired operation.
Changes or modifications not expressly approved by the party responsible for compliance could void the user's authority to operate the equipment.
Note: This equipment has been tested and found to comply with the limits for a class B digital device pursuant to Part 15 of the FCC Rules. These limits are designed to provide reasonable protection against harmful interference in a residential installation.
This equipment generates uses and can radiate radio frequency energy and if not installed and used in accordance with the instructions, may cause harmful interference to radio communications. However, there is no guarantee that interference will not occur in a particular installation if this equipment does cause harmful interference to radio or television reception, which can be determined by turning the equipment off and on, the user is encouraged to try to correct the interference by one or more of the following measures:
* Reorient or relocate the receiving antenna.
* Increase the separation between the equipment and receiver.
* Connect the equipment into an outlet on a circuit different from that to which the receiver is connected.
* Consult the dealer or an experienced radio/TV technician for help.
FCC Radiation Exposure Statement:
This equipment complies with FCC radiation exposure limits set forth for an uncontrolled environment.
This equipment should be installed and operated with a minimum distance of 20 cm between the radiator and your body.