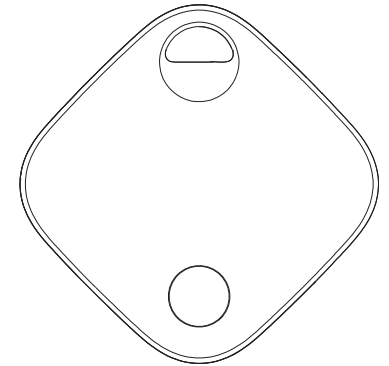




Locate My Car Smart Vehicle Tracker



User Guide

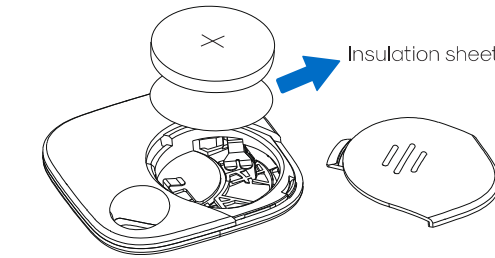
Specifications

Size: 37.16 x 37.16 x 8mm
Weight: 9g
Battery: CR2032 (Replaceable)
Voltage: DC 3V
Current: ≤5uA(Standby) / ≤10mA(Max)
Wireless: BLE 5.1
Wireless range: ≥131.2ft. (Line-of-sight)
Buzzer: Built-in ≥75db (in 3.9in.)
Temperature range: 23°F~113°F (- 5°C~45°C)
Humidity range: ≤95% (Non-condensing)

Instructions

1. Turn ON the Device and Pair

- Press the battery compartment and slide it down. Remove the insulation sheet and place the battery back.
- Press and hold the button for 3 seconds. The device will beep and enter the pairing state.



2. Pair the Device

- Open the Apple Find My app.
- Hold the tracker close to an iPhone or iPad, tap the ITEMS tab, and then ADD OTHER ITEM.
- Tap CONNECT.
- Type a name for the device and select an emoji.
- Tap AGREE to acknowledge that this item will be paired to your Apple ID.
- Tap FINISH.

3. Enable Lost Mode

- Open the Apple Find My app, tap the ITEMS tab, then tap the item.
- Under LOST MODE, tap ENABLE.
- Read the instructions, tap CONTINUE and enter a phone number or email address.
- Confirm the information, customize the lost message, and tap ACTIVATE to complete the setup.

4. Remove the Device

- Open the Apple Find My app, tap the ITEMS tab, then tap the item.
- Tap REMOVE ITEM and then tap REMOVE to complete the operation.

Note: If you want to pair the same device that has been immediately removed from the Apple Find My app, please wait 10 minutes before re-pairing. If there is no re-pairing within 10 minutes, the device will leave the pairing state. If you need to pair the device, please press the device button for 3 seconds until it beeps. At this point, the device enters the pairing state and can be re-paired with the Apple Find My app.

5. Factory Reset

When the Smart Tag needs to be paired with a new account or when the original account removes the Smart Tag in the Apple Find My app, the Smart Tag needs to be reset. After removing the device from the Apple Find My app, long press the button of the tracker for about 12 seconds until the device beeps. Then immediately double click the button of the tracker twice. When the device beeps twice, release the button.

Main Functions

1. Locate Your Item

If you lost your item and cannot remember where it was placed, the Apple Find My app can still help track it using the Apple Find My network - hundreds of millions of iPhone, iPad, and Mac devices around the world. Nearby devices securely send the location of your missing device to iCloud and can be seen in the Apple Find My app. It's all anonymous and encrypted to protect everyone's privacy.

2. Play Sound

- Open the Apple Find My app, tap the ITEMS tab, then tap the item.
- Click PLAY SOUND, and the device will beep so you can find the item easily.

Troubleshooting

1. When can the device be located?

When an item is separated from its owner for a period of time, it can be found by other Apple devices that are part of the Find My network and the owner can get the location of the device.

2. How is the device designed to discourage unwanted tracking?

If any of the Apple Find My network accessories are separated from its owner, you'll be notified in one of two ways:

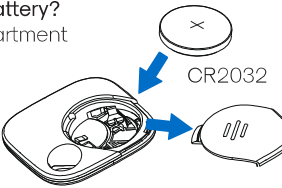
- If you have an iPhone or iPad, Find My will send a notification to your Apple device. This feature is available on iOS or iPadOS 14.5 or later.
- If you don't have an iOS device or a smartphone, a Find My network accessory that isn't with its owner for a period of time will emit a sound when it's moved. These features were created specially to discourage people from trying to track you without your knowledge.

3. How is my privacy protected?

Only you can see where your item is. Your location data and history are never stored on the item itself. Devices that relay the location of your item also stay anonymous and the location data is encrypted every step of the way. Not even Apple or Atomi knows the location of a device or the identity of the owner.

4. How can I replace the battery?

- Press the battery compartment and slide it down.
- Replace the battery with a new one (positive pole upward).
- Assemble the tracker.



5. What is the Find My network and how does it work?

The Apple Find My network provides an easy, secure way to locate compatible personal items on a map using the Find My app on your iPhone, iPad, or Mac. Simply pair your compatible product with the Apple Find My app to view it right alongside your Apple devices. If your item ever goes missing, you can put it in LOST MODE to display a message and contact information to anyone who might find it.

6. Serial Number Lookup

Locate and press the button on front of the Smart Tag.

7. Disable the Apple Find My Network

- Open the battery cover on the back of the Smart Tag by pressing down and sliding the cover out.
- Remove the battery.

Important Tips

When pairing a device with the Apple Find My app, the phone will link to the Apple server but pairing can fail because of network problems. The following actions are recommended:

- Change the phone's network, such as switching between WiFi and mobile network.
- Factory reset the device.
- Re-pairing with the Apple Find My app.

Regulatory Safety Information

WARNING: KEEP BATTERIES OUT OF REACH OF CHILDREN

Swallowing may lead to serious injury in as little as 2 hours or death, due to chemical burns and potential perforation of the oesophagus. If you suspect your child has swallowed or inserted a button battery, immediately call the 24-hour Poison Information Centre for fast expert advice. Rated voltage: 3V
Rated current: ~175 mAh



KEEP BATTERIES OUT OF REACH OF CHILDREN

- Keep in original package until ready to use
- Call a local poison control center for treatment information.
- Do not use if the compartment is not secure.
- Dispose of used button batteries promptly and safely. Flat batteries can still be dangerous.
- Risk of fire and burns.
- Do not recharge, disassemble, heat 23°F ~ 113°F (-5°C ~ 45°C) or incinerate.

Safety Statement

Article 12

Without permission, any company, firm or user shall not alter the frequency, increase the power, or change the characteristics and functions of the original design of the certified lower power frequency electric machinery.

Article 14

The application of low power frequency electric machinery shall not affect the navigation safety nor interfere a legal communication, if an interference is found, the service will be suspended until improvement is made and the interference no longer exists. The foregoing legal communication refers to the wireless telecommunication operated according to the telecommunications laws and regulations. The low power frequency electric machinery should be able to tolerate the interference of the electric wave radiation electric machinery and equipment for legal communications or industrial and scientific applications.

WARNING

CAUTION : Do not ingest battery, Chemical Burn Hazard. This product contains a coin / button cell battery. If the coin / button cell battery is swallowed, it can cause severe internal burns in just 2 hours and can lead to death. Keep new and used batteries away from children. If the battery compartment does not close securely, stop using the product and keep it away from children. If you think batteries might have been swallowed or placed inside any part of the body, seek immediate medical attention. Risk of explosion if the battery is replaced by an incorrect type.

FCC Regulations

This device complies with part 15 of the FCC Rules. Operation is subject to the following two conditions: (1) This device may not cause harmful interference, and (2) this device must accept any interference received, including interference that may cause undesired operation. This device has been tested and found to comply with the limits for a Class B digital device, pursuant to Part 15 of the FCC Rules. These limits are designed to provide reasonable protection against harmful interference in a residential installation. This equipment generates, uses and can radiated radio frequency energy and, if not installed and used in accordance with the instructions, may cause harmful interference to radio communications. However, there is no guarantee that interference will not occur in a particular installation. If this equipment does cause harmful interference to radio or television reception, which can be determined by turning the equipment off and on, the user is encouraged to try to correct the interference by one or more of the following measures:

- Reorient or relocate the receiving antenna.
- Increase the separation between the equipment and receiver.
- Connect the equipment into an outlet on a circuit different from that to which the receiver is connected.
- Consult the dealer or an experienced radio/TV technician for help.

Caution: Changes or modifications not expressly approved by the party responsible for compliance could void the user's authority to operate the equipment.

FCC RF Exposure Information (SAR)

This device is designed and manufactured not to exceed the emission limits for exposure to radio frequency (RF) energy set by the Federal Communications Commission of the United States.

During SAR testing, this device is set to transmit at its highest certified power level in all tested frequency bands, and placed in positions that.

The FCC has granted an Equipment Authorization for this model device with all reported SAR levels evaluated as in compliance with the FCC RF exposure guidelines. This equipment should be installed and operated with minimum distance 5mm from your body. While there may be differences between the SAR levels of various devices and at various positions, they all meet the government requirement.

Declaration of Conformity European Notice

Hereby, Ningbo Lingzhu Technology CO., Ltd. declares that this product is in compliance with essential requirements and other relevant provisions of Directive 2014/53/EU, 2011/65/EU. This product must not be disposed of as normal household waste, in accordance with EU directive for waste electrical and electronic equipment (WEEE-2012/19/EU). Instead, it should be disposed of by returning it to the point of sale, or to a municipal recycling collection point.

Legal Notice

Use of the Works with Apple badge means that a product has been designed to work specifically with the technology identified in the badge and has been certified by the product manufacturer to meet Apple Find My network product specifications and requirements. Apple is not responsible for the operation of this device or use of this product or its compliance with safety and regulatory standards.

Compatibility Statement

To use the Apple Find My app to locate this item, the latest version of iOS, iPadOS, or macOS is recommended.

Credit Line

Apple, Apple Find My, Apple Watch, Find My, iPhone, iPad, iPadOS, Mac, macOS and watchOS are trademarks of Apple Inc. IOS is a trademark or registered trademark of Cisco in the U.S. and other countries and is used under license.



For questions or concerns, email us at support@atomiusa.com
Manufactured and marketed by Atomi Inc.
10 West 33rd St., New York, NY 10001
Atomi™ is a trademark of Atomi Inc.
Atomi smart® is a registered trademark of Atomi Inc.
Designed by Atomi in New York. Made in China

One-year limited warranty from the date of purchase against defects in material and workmanship.