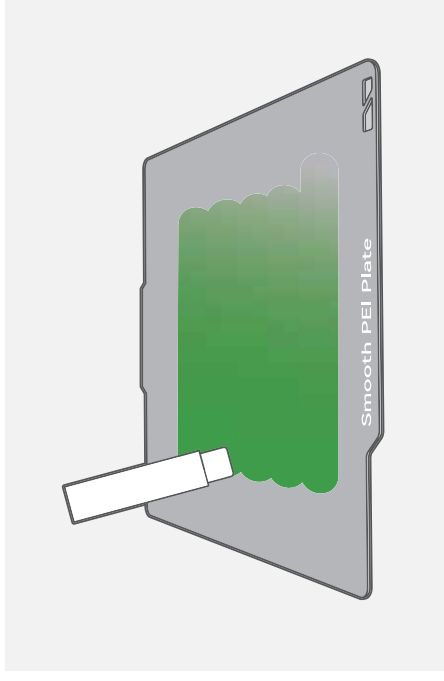
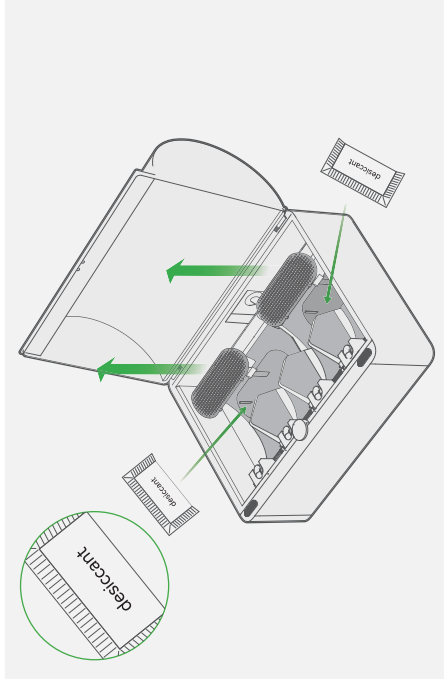
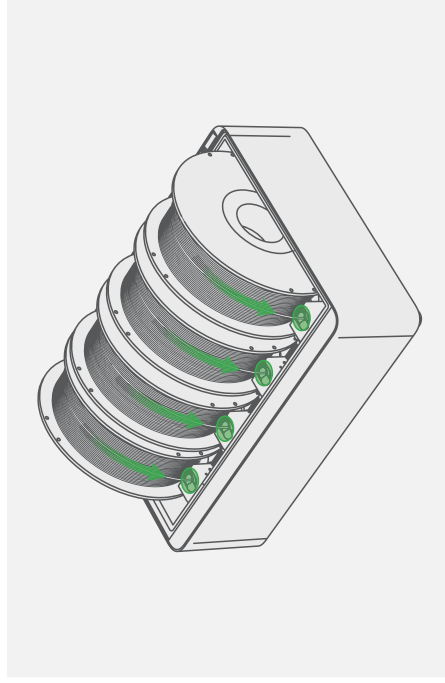


First Print

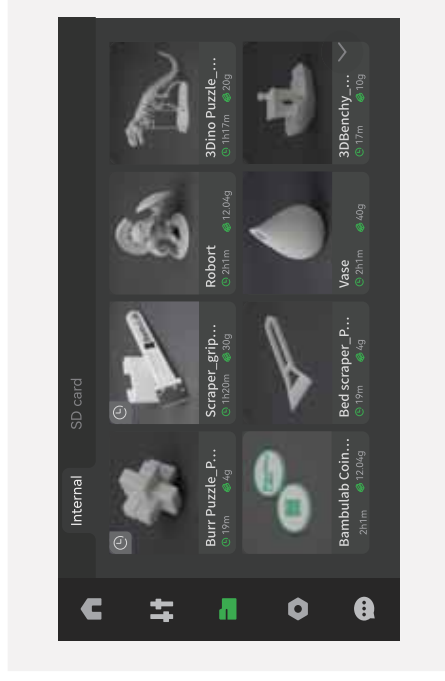


Apply a thin layer of glue on the build plate.



Place at least one spool of Bambu Filament into the AMS. Turn on the power to start the printer and the AMS. Insert the filament into the filament inlet. The filament will be automatically pre-loaded when detected.

*We recommend first printing a single-color model with the supplied Bambu PLA Basic.

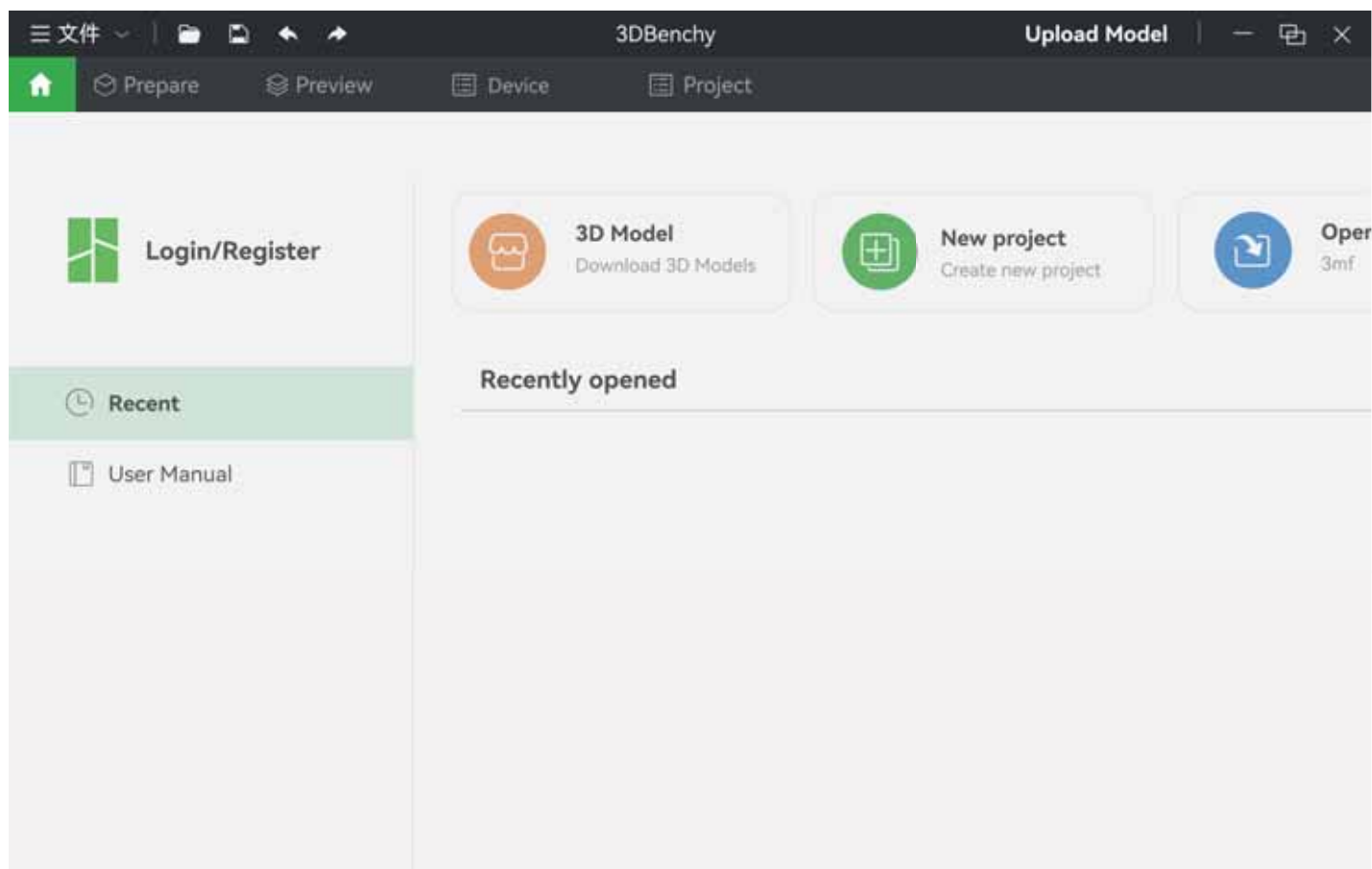


Press "Internal" - "Internal". Select a file to start the first print.

*We recommend using one of the pre-loaded files as a first test print.

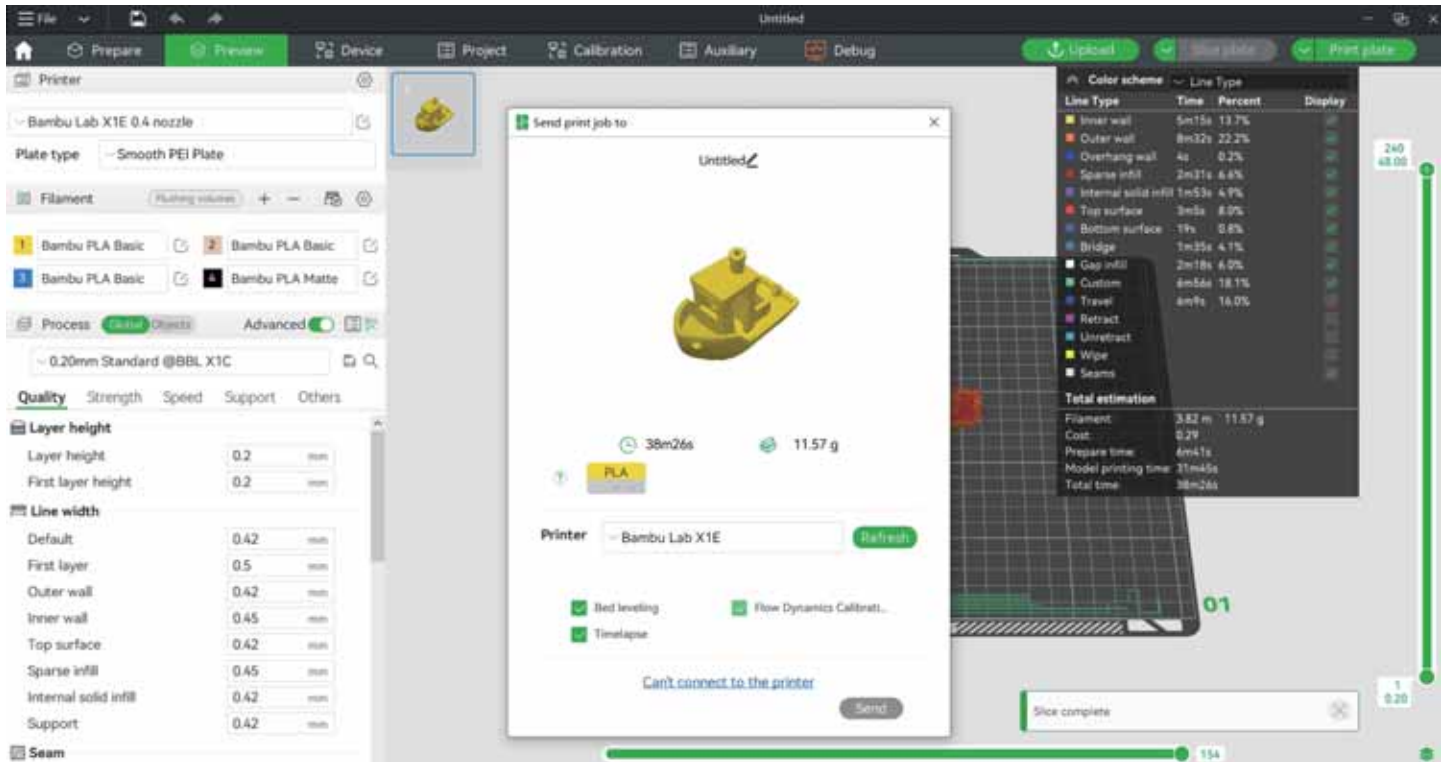
Bambu Studio

Download Bambu Studio: <http://bambulab.com/download>



Log in to Bambu Studio with your Bambu Lab account, which is the same for the Bambu Online store. Create or open a project.

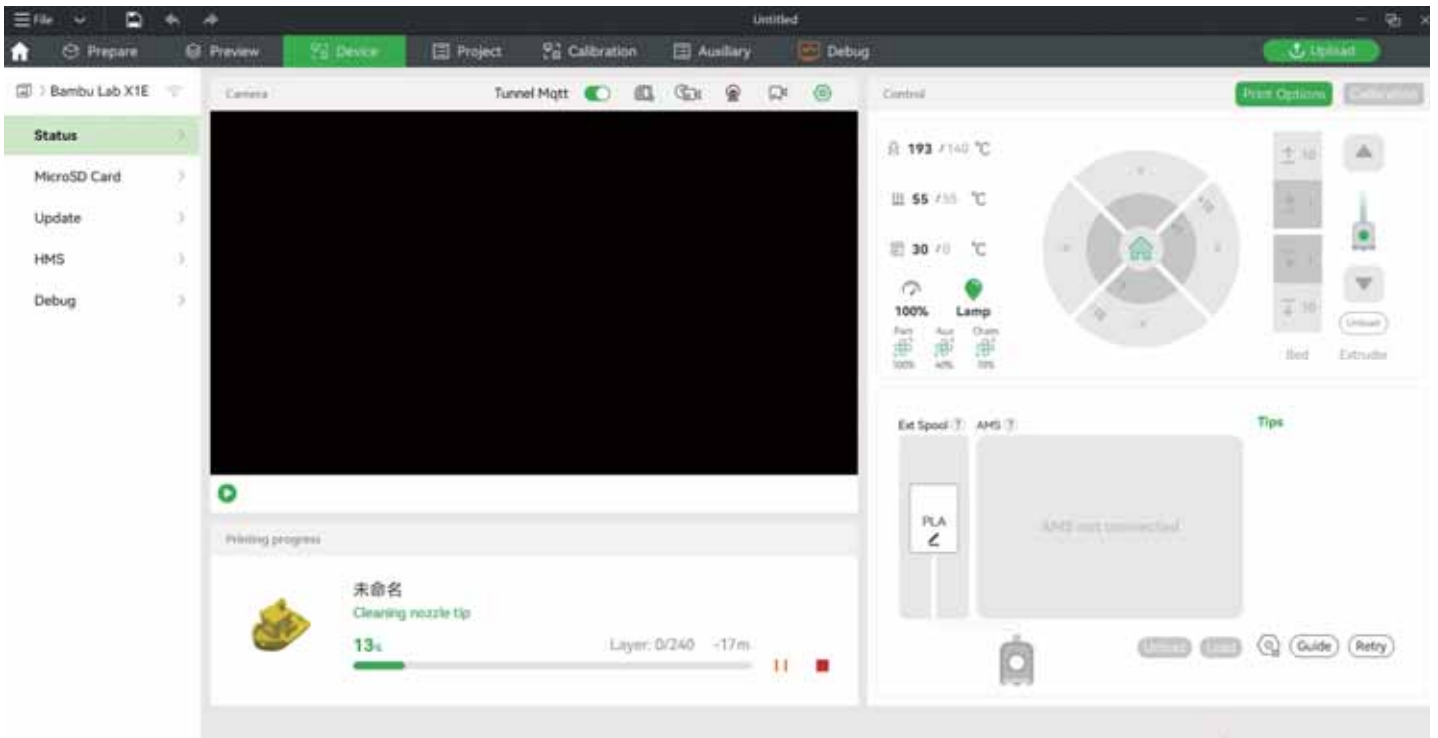
Bambu Studio



Slice the model, select your printer and send the model to print.

*We recommend performing bed leveling before each print and performing flow calibration after changing filament.

Bambu Studio



During printing, you can remotely monitor your print, or pause/stop printing on the "Device" interface.

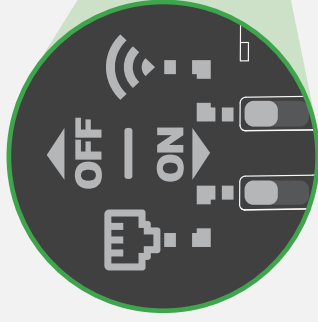
*The live view can be seen only if a camera is mounted.



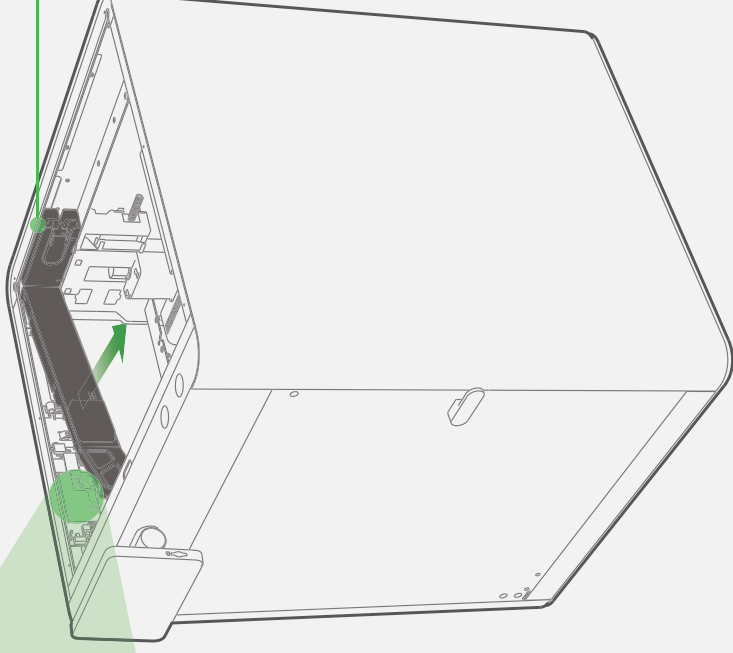
Bambu Studio
Bambu Handy

<https://bambulab.com/download>

Network Kill Switch



1. Peel out the cover at the left upper side of the X1E frame.



2. There are 2 separate switches to physically turn off the Ethernet and Wi-Fi.

Customer Support

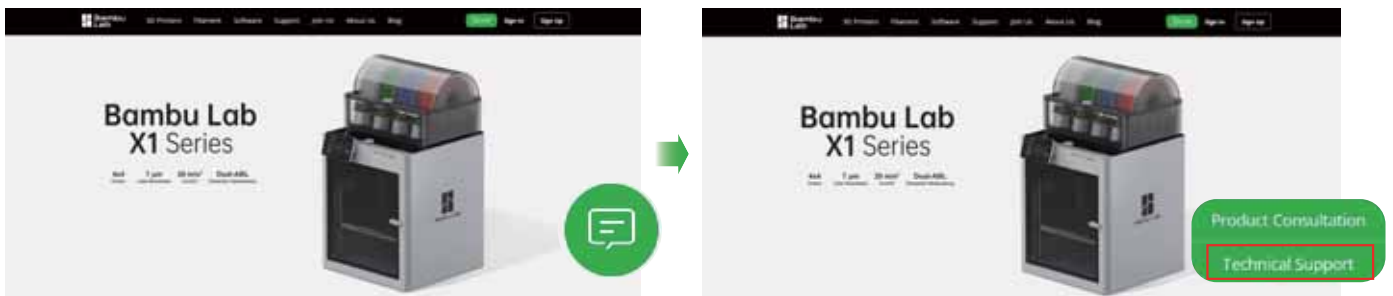
Please visit the Bambu Lab Wiki for more setup and maintenance tutorials.

<https://wiki.bambulab.com/en/home>



If you need support, please try either of the two approaches:

Approach 1: Create a support ticket on the Official Website



Approach 2: Create a support ticket on the Bambu Handy App





Bambu Lab

Enjoy!

www.bambulab.com



Bambu Lab X1 Series 3D Printer
Disclaimer and Safety Guidelines

Disclaimer and Warning

Thanks for purchasing a Bambu Lab product. The information in this document affects your safety and your legal rights and responsibilities. Read this entire document carefully to ensure proper configuration before use. Failure to read and follow instructions and warnings in this document may result in serious injury to yourself or others, damage to your Bambu Lab product, or damage to other objects in the vicinity. This document and other collateral documents are subject to change at the sole discretion of Bambu Lab.

By using this product, you hereby signify that you have read this disclaimer and warning carefully and that you understand and agree you are solely responsible for your own conduct while using this product, and for any consequences thereof. You agree to use this product only for purposes that are proper and in accordance with all applicable laws, rules and regulations, and all terms, precautions, practices, policies, and guidelines Bambu Lab has made and may make available. Bambu Lab accepts no liability for damage, or injury or any legal responsibility incurred directly or indirectly from the use of the product. The user shall observe safe and lawful practices including, but not limited to, those set forth in this document.

Bambu Lab is a trademark of Shenzhen Tuozhu Technology Co., Ltd. and its affiliated companies. Names of products, brands, etc., appearing in this manual are trademarks or registered trademarks of their respective owner companies.

Before You Start

The following documents have been produced to help you safely operate and make full use of your Bambu Lab X1 Series 3D Printer:

Bambu Lab X1 Series 3D Printer Disclaimer and Safety Guidelines
Bambu Lab X1 Series 3D Printer Quick Start Guide

Check that you have all the included parts. Please review the entire Quick Start Guide before operating the printer. Read the Disclaimer and Warning above to understand your legal rights and responsibilities. If you have any questions or problems during the installation, maintenance, or use of this product, Please contact Bambu Lab or a Bambu Lab authorized dealer.

Safety Guidelines

- 1、 The product shall be used by personnel with necessary training, knowledge and experience.
- 2、 The product must be disconnected from the power supply before carrying out any installation or maintenance work.
- 3、 The product shall be connected to a mains socket outlet with a protective earthing connection.
- 4、 Installation and maintenance must be carried out by a skilled worker in compliance with the manufacturer's instructions and local safety regulations.
- 5、 Do not use multiple plug adapters or extension leads.
- 6、 Do not touch the product with any wet part of the body and do not operate it while barefoot.
- 7、 Do not reach inside the appliance while it is in operation.
- 8、 Children using or near the printer must be accompanied and supervised by a responsible adult at all times.
- 9、 This product is designed solely for indoor use. It should be kept in a dry environment.
- 10、 The recommended operating temperature for the appliance is between 10°C to 30°C(50°F-86°F).
- 11、 The recommended humidity level is under 85%.
- 12、 The product should be positioned on a clean, stable and flat workbench.
- 13、 The product should be kept in a well-ventilated location.

Compliance Information

FCC Compliance Notice

Supplier's Declaration of Conformity

Product name: X1/X1-Carbon/X1E

Model Number: PF001-A/PF001-P/PF001-E

Responsibility Party: Shenzhen Tuozhu Technology Co.,Ltd. (Bambulab USA Inc)

Responsibility Party Address: 8000 Centre Park Drive, STE 330, Austin, TX, 78754

Website: www.bambulab.com

We, Shenzhen Tuozhu Technology Co.,Ltd. (Bambulab USA Inc) , being the responsible party, declares that the above mentioned model was tested to demonstrate compliance with all applicable FCC rules and regulations.

This device complies with Part 15 of the FCC Rules. Operation is subject to the following two conditions:

(1) This device may not cause harmful interference, and (2) This device must accept any interference received, including interference that may cause undesired operation. **Warning:** Changes or modifications not expressly approved by the party responsible for compliance could void the user's authority to operate the equipment.

NOTE: This equipment has been tested and found to comply with the limits for a Class B digital device, pursuant to Part 15 of the FCC Rules. These limits are designed to provide reasonable protection against harmful interference in a residential installation. This equipment generates uses and can radiate radio frequency energy and, if not installed and used in accordance with the instructions, may cause harmful interference to radio communications. However, there is no guarantee that interference will not occur in a particular installation. If this equipment does cause harmful interference to radio or television reception, which can be determined by turning the equipment off and on, the user is encouraged to try to correct the interference by one or more of the following measures:

- Reorient or relocate the receiving antenna.
- Increase the separation between the equipment and receiver.
- Connect the equipment into an outlet on a circuit different from that to which the receiver is connected.
- Consult the dealer or an experienced radio/TV technician for help.

FCC Radiation Exposure Statement

This equipment complies with FCC radiation exposure limits set forth for an uncontrolled environment. This equipment should be installed and operated with minimum distance 20cm between the radiator & your body.

ISED Compliance Notice

This device contains license-exempt transmitter(s)/receiver(s) that comply with Innovation, Science and Economic Development Canada's license-exempt RSS(s). Operation is subject to the following two conditions:(1) This device may not cause interference. (2) This device must accept any interference, including interference that may cause undesired operation of the device.

Cet appareil contient un (s) émetteur (s) / récepteur (s) exempté (s) de licence (s) conforme à l'innovation, à la science et au développement économique Canada exempté (s) RSS (s). L'opération est soumise aux deux conditions suivantes: (1) Cet appareil peut ne pas causer d'interférence. (2) Cet appareil doit accepter toute interférence, y compris les interférences pouvant entraîner un fonctionnement indésirable de l'appareil.

ISED Radiation Exposure Statement

The device meets the exemption from the routine evaluation limits in section 2.5 of RSS-102 and compliance with RSS-102 RF exposure, users can obtain Canadian information on RF exposure and compliance. This equipment should be installed and operated with a minimum distance of 20 centimeters between the radiator and your body.

Le dispositif rencontre l'exemption des limites courantes d'évaluation dans la section 2.5 de RSS 102 et la conformité à l'exposition de RSS-102 rf, utilisateurs peut obtenir l'information canadienne sur l'exposition et la conformité de rf. Cet émetteur ne doit pas être Co-placé ou ne fonctionnant en même temps qu'aucune autre antenne ou émetteur. Cet équipement devrait être installé et actionné avec une distance minimum de 20 centimètres entre le radiateur et votre corps.

EU Compliance Statement

Hereby, Shenzhen Tuozhu Technology Co., Ltd. declares that the radio equipment type X1/X1-Carbon/X1E is in compliance with Directive 2014/53/EU. The full text of the EU declaration of conformity is available at the following internet address: www.bambulab.com/euro-compliance

UK Compliance Statement

Hereby, Shenzhen Tuozhu Technology Co., Ltd. declares that the radio equipment type X1/X1-Carbon/X1E is in compliance with Radio Equipment Regulations 2017. The full text of the GB declaration of conformity is available at the following internet address: www.bambulab.com/euro-compliance

Notice

VISIBLE AND INVISIBLE LASER RADIATION

DO NOT STARE INTO BEAM

Max. OUTPUT POWER < 1mW

WAVELENGTH: 405 nm and 808 nm

CLASS 2 LASER PRODUCT

IEC 60825-1:2014

Complies with 21 CFR 1040.10 and 1040.11 except for conformance with IEC 60825-1 Ed.3., as described in Laser Notice No.56, dated May 8, 2019



www.bambulab.com

Copyright © 2023 Bambu Lab All Rights Reserved.