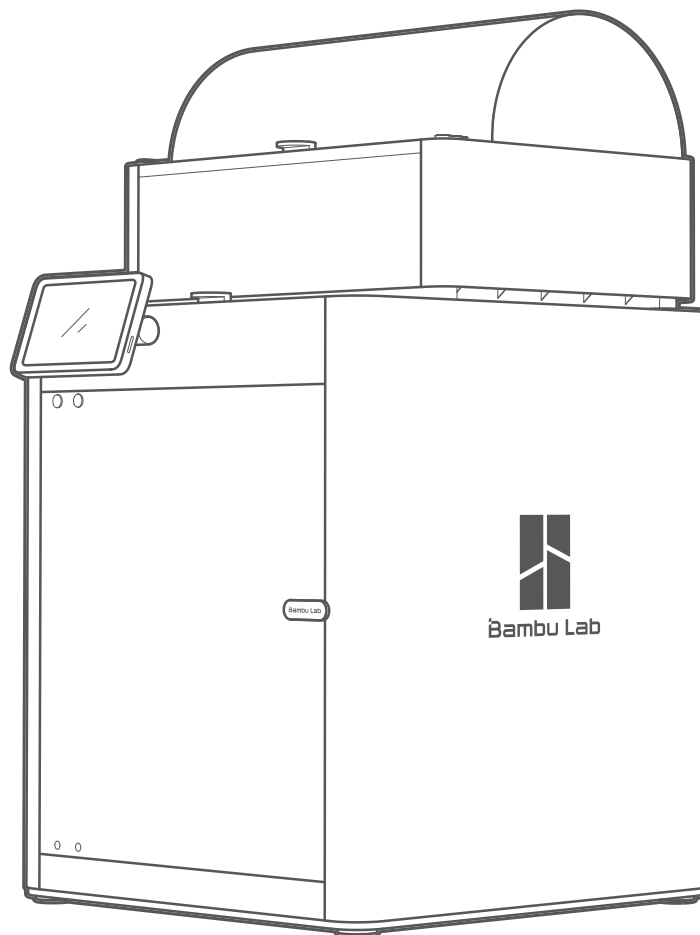


Bambu Lab X1E Combo 3D Printer

Quick Start

Please review the entire guide before operating the printer.

- * Safety Notice: Do not connect to power until assembly is complete.



PF001-E



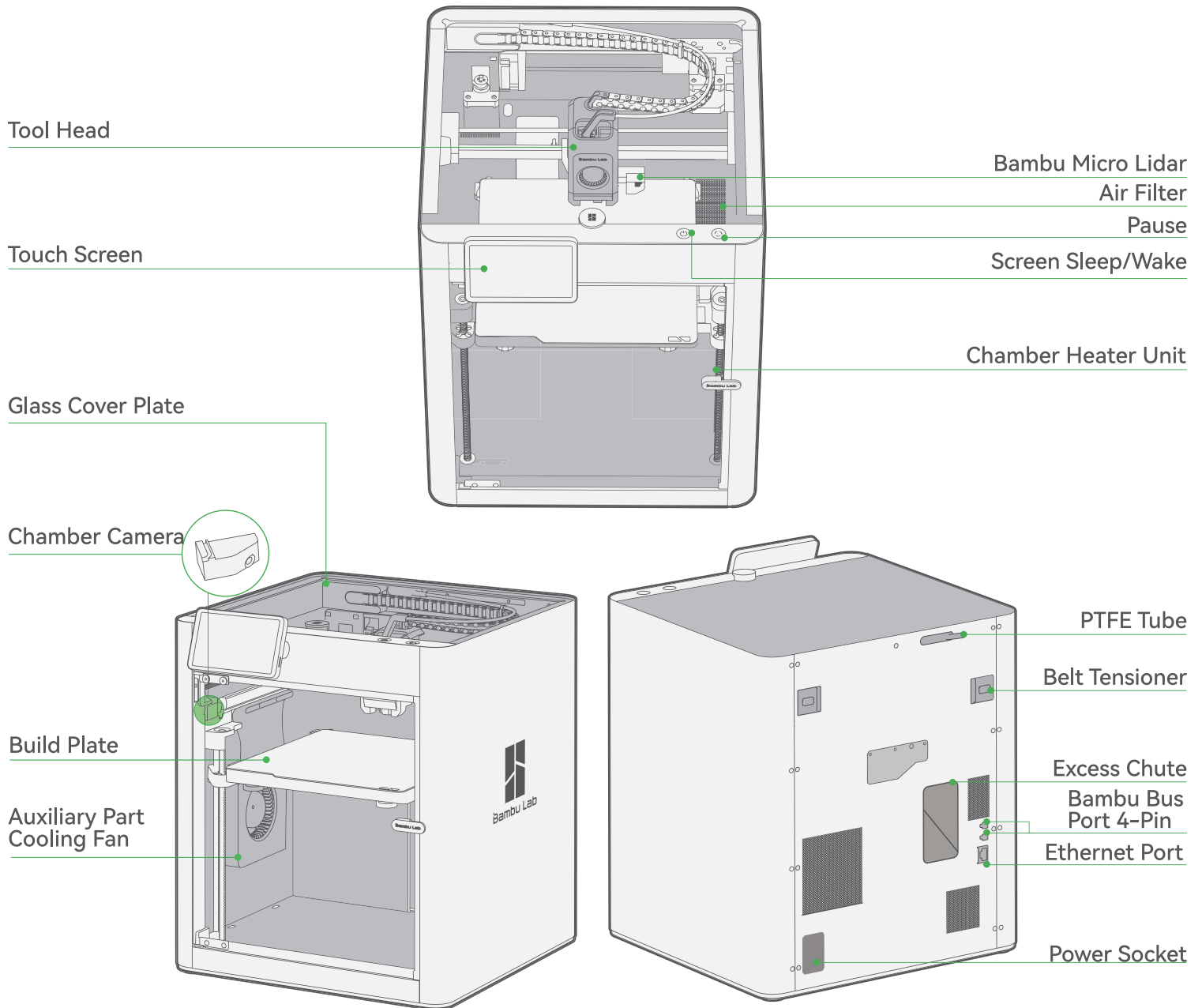
Bambu Studio & Bambu Handy
<https://bambulab.com/download>

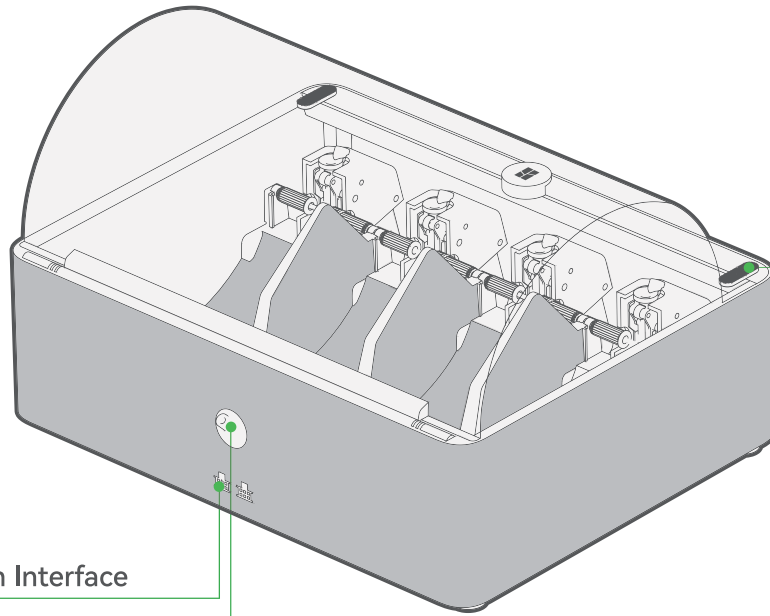
*Warning:

- When operating the AMS, we recommend using Bambu Filament, which has been thoroughly tested to work with the AMS.
- **Please make sure to avoid using soft materials like TPU or damp PVA, as they can get stuck in the AMS.**
- AMS supports spool width of 50 mm - 68 mm. We highly recommend using filament with plastic spools that fit correctly inside the AMS. If you prefer to use cardboard spools, we strongly advise using a spool adapter to reduce the risk of slippage and debris getting left behind in the AMS.
- If you run into any issues with specific filaments, please let us know so that we can provide better advice to our community.



Component Introduction



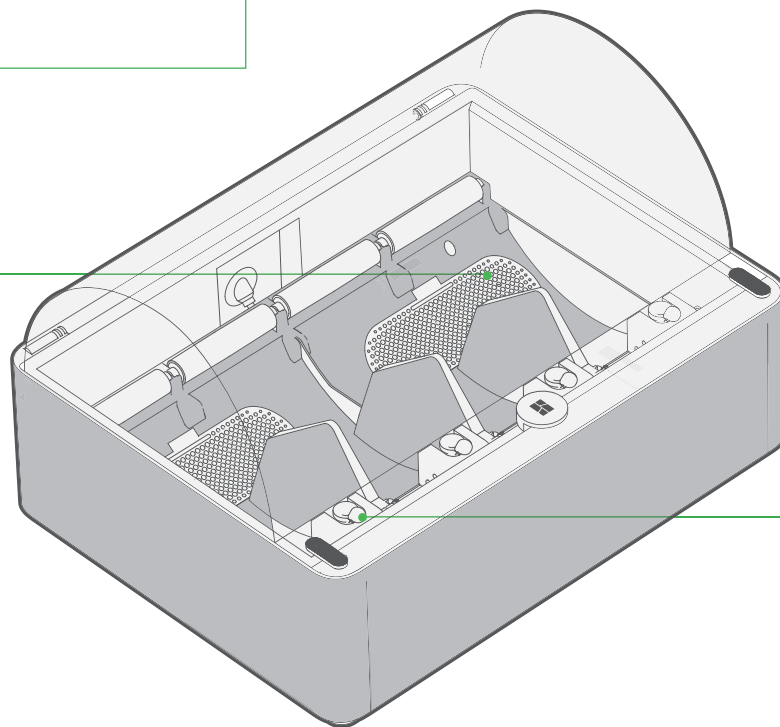


Buckle

Bambu Bus Cable 6-Pin Interface

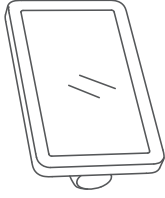
Filament Outlet

Desiccant

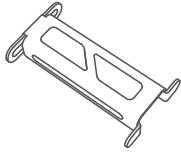


Filament Inlet

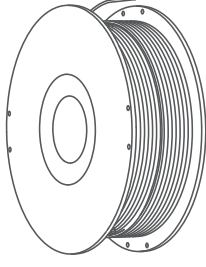
Accessory Specification



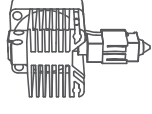
Touch Screen



Spool Holder



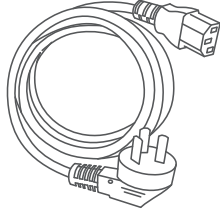
Filament (x3)



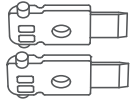
Complete Hot End Assembly



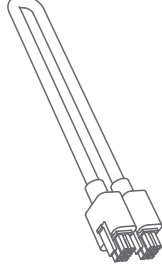
Nozzle Wiping Pad (x2)



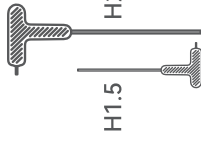
Power Cord



Spare Filament Cutter (x2)



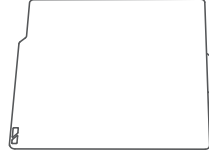
Bambu Bus Cable-6Pin



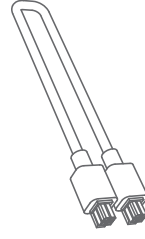
Allen Key H1.5
Allen Key H2



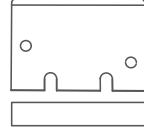
Unclogging Pin Tool



Flexible Build Plate
(Pre-installed on build plate)



Bambu Bus Cable-4Pin

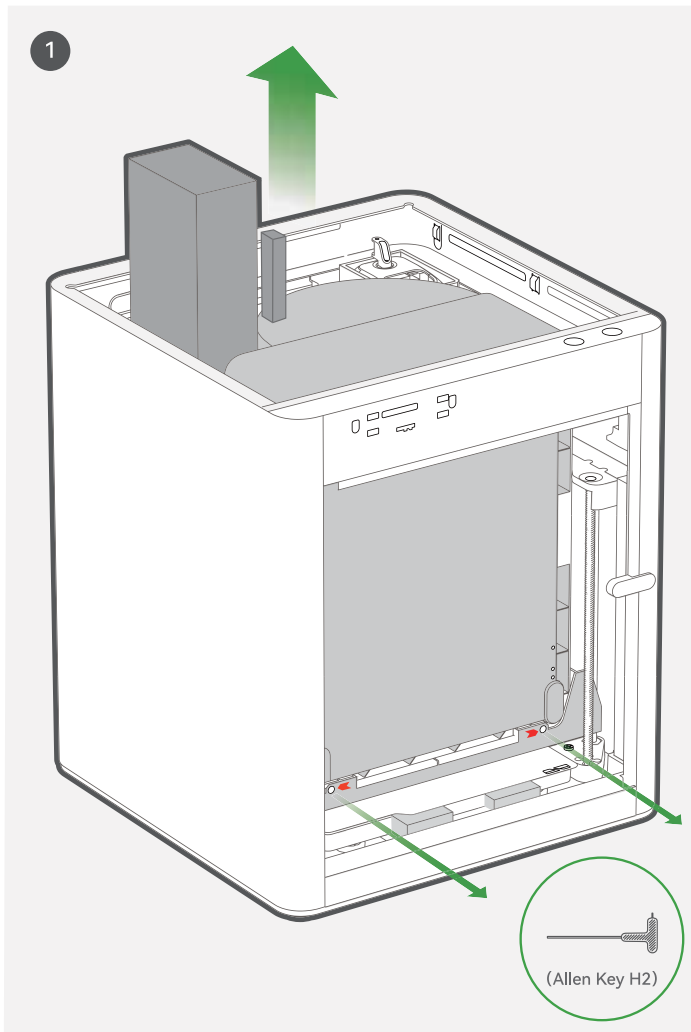


Bambu Scraper



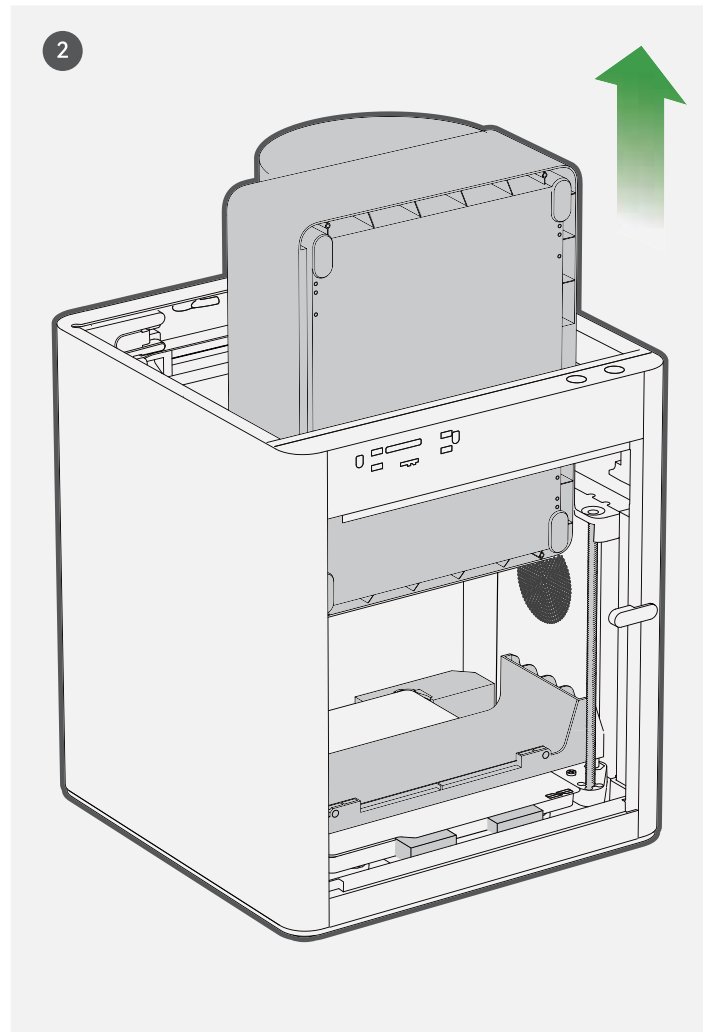
Glue for Build Plate

AMS & Tool Head Unlock

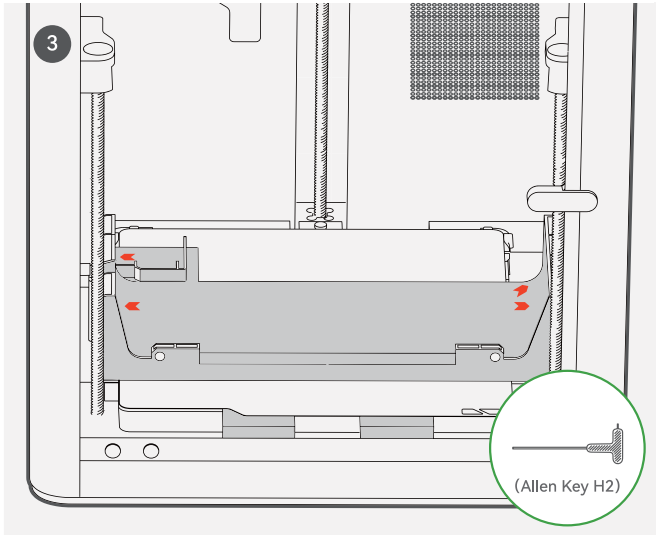


Take out the accessory box and filament switches.

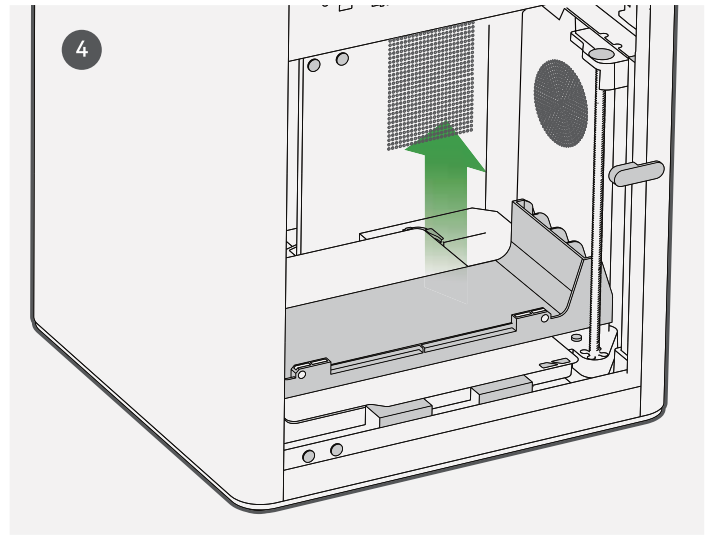
*We recommend using the short end of the Allen Key to unlock the screws more easily.



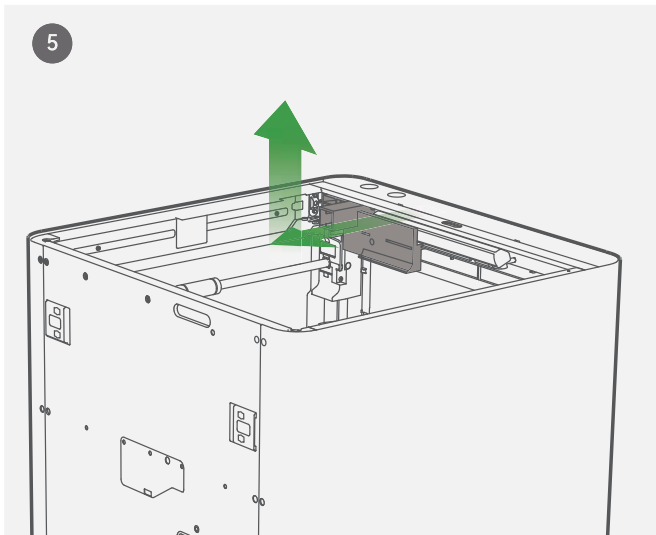
Take out the AMS by sliding it out through the top.



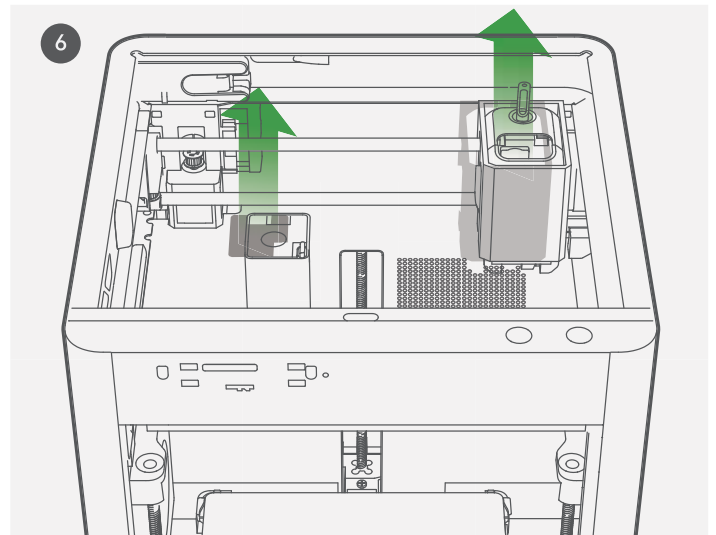
Remove the four screws as the arrows indicate.



Take out the AMS cushioning.



Take out the cushioning.



Remove the cardboard from the tool head.
Remove the foam from the excess chute.

AMS Assembly

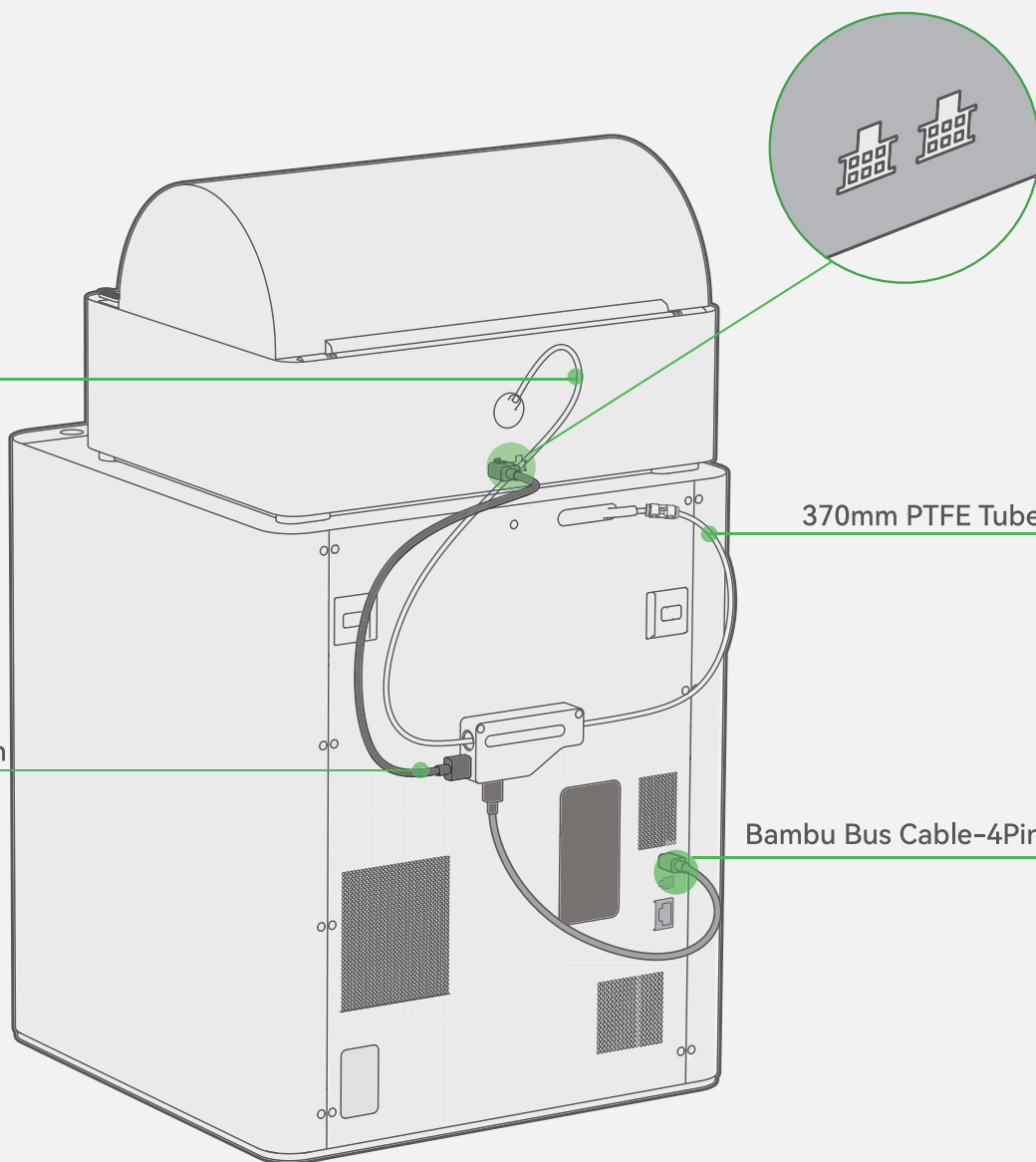
*The cable-6pin can be plugged into either interface.

550mm PTFE Tube

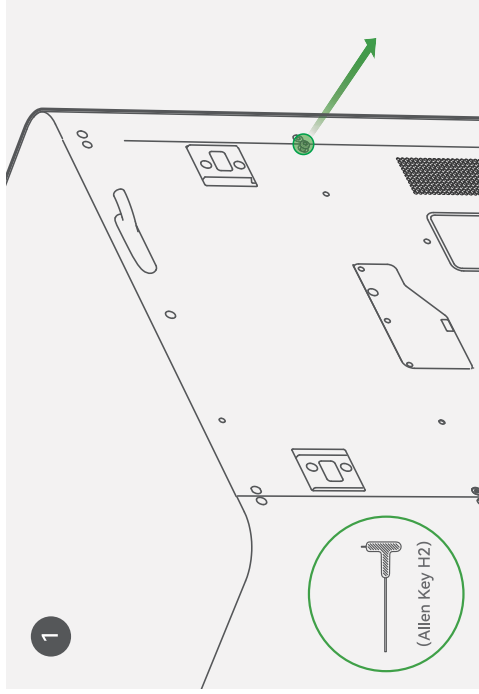
370mm PTFE Tube

Bambu Bus Cable-6Pin

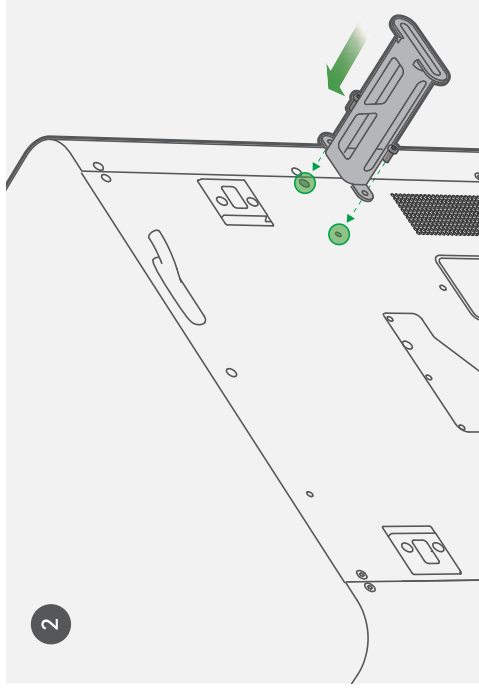
Bambu Bus Cable-4Pin



Spool Holder Assembly

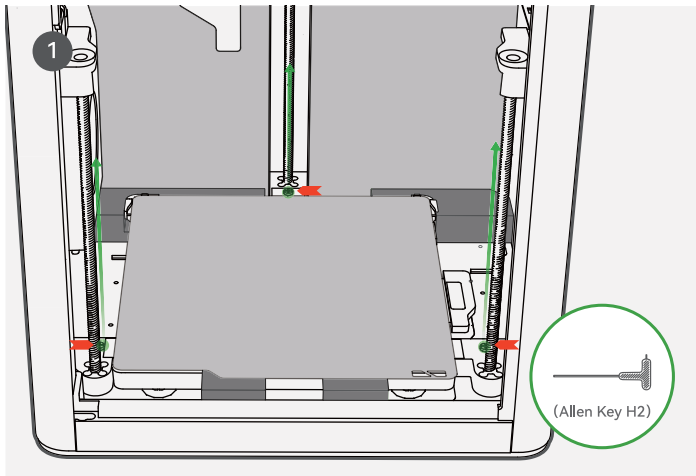


Remove the screw as pictured with an Allen Key H2.

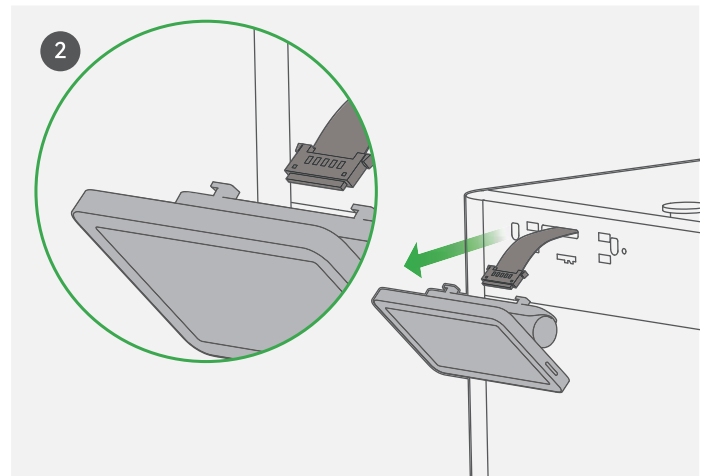


Secure the spool holder with two screws from the accessory box.

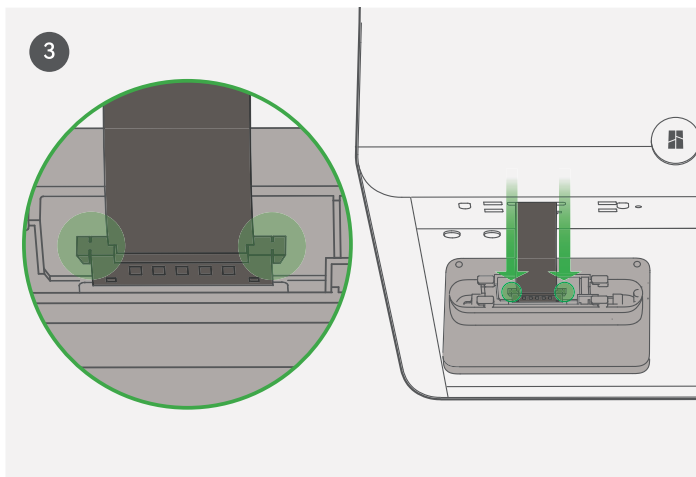
Hot Bed Unlock & Screen Installation



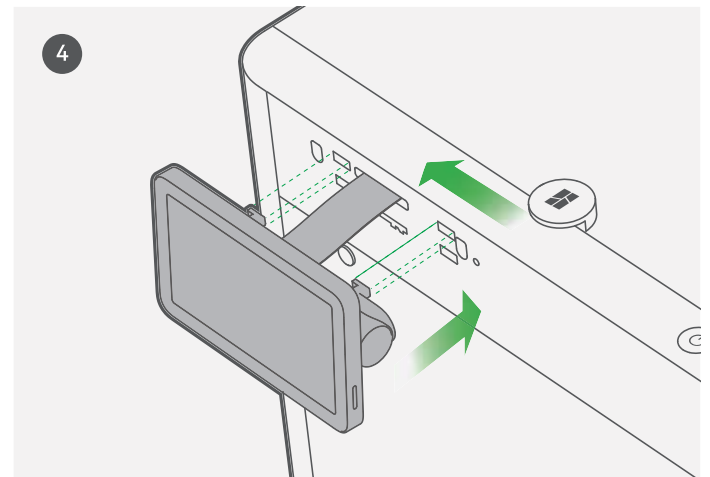
Remove the three screws with an Allen Key H2 to unlock the hot bed.



Pull the Flexible Printed Circuit (FPC) out about 50mm.

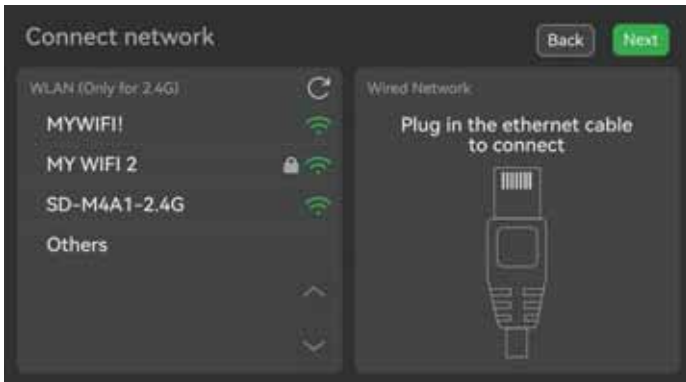


Insert the FPC into the port by pressing the terminal as pictured.

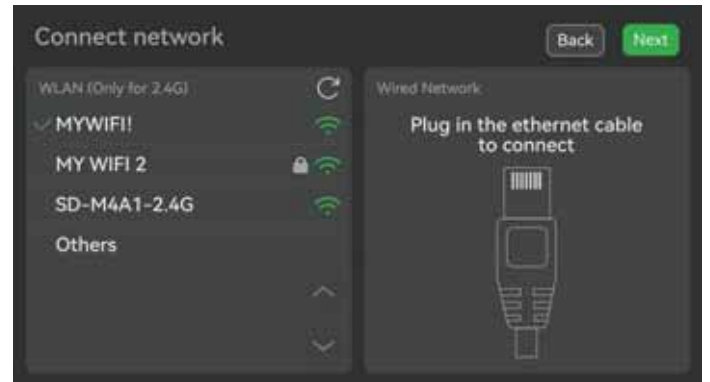


Insert the screen back to the slot on the printer, then lock it by pushing it to the left.

Connectivity



X1E now supports both Wi-Fi and Wired connection.



Select your preferred Wi-Fi to connect with Wi-Fi. The connected Wi-Fi network shows a checkmark on the left.



Plug-in the Ethernet cable to connect with Ethernet. The connected status shows on the screen as the diagram.



You can connect with both Wi-Fi and Ethernet. (Ethernet connection is prioritized)

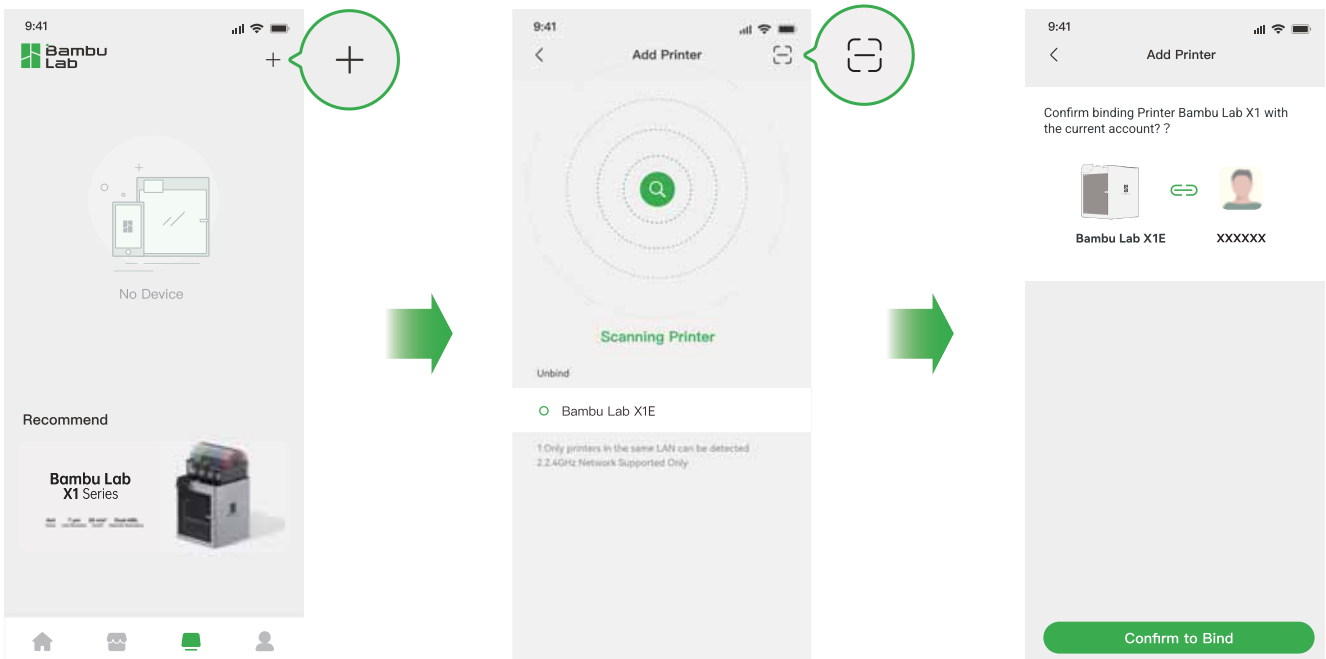
Printer Binding

1. Download the Bambu Handy App. Register and log in to your Bambu Lab account.

2. Connect the printer to power. Follow the instructions on the screen until getting to the page shown on the right side.



3. Use Bambu Handy to scan the QR code on the screen, and bind your printer with your Bambu Lab account.



4. Follow the instructions on the screen to complete the initial calibration. It is normal to have vibration and noise during the calibration process.

DO NOT remove the protective foam from beneath the hot bed until after the initial calibration is complete.