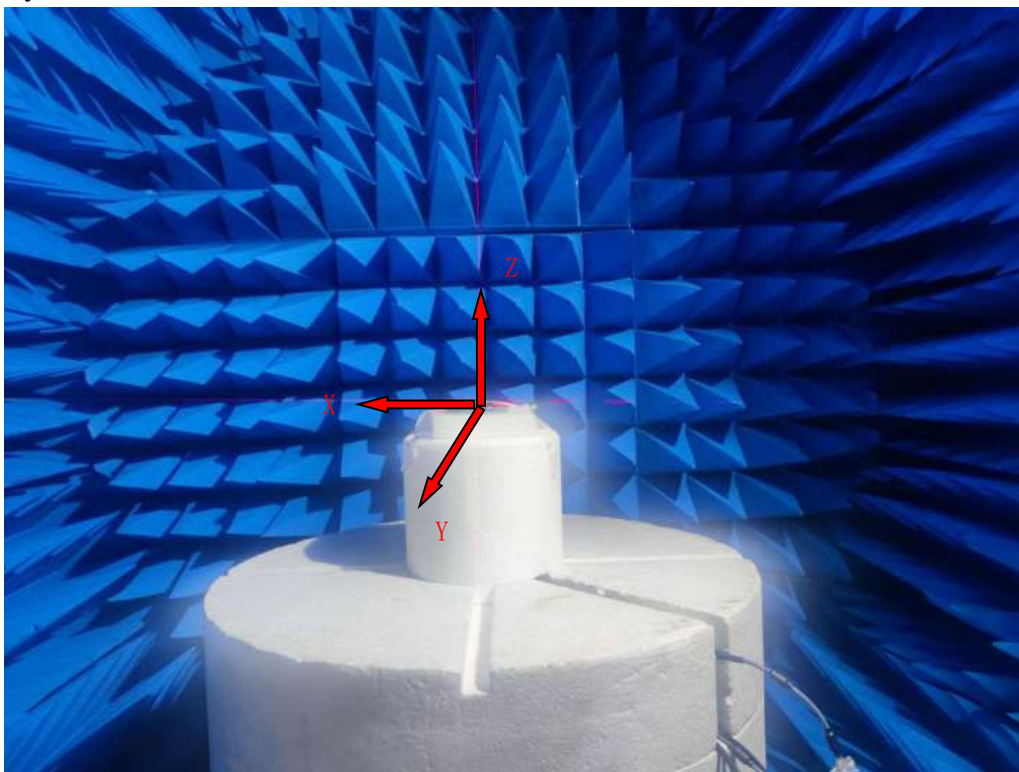


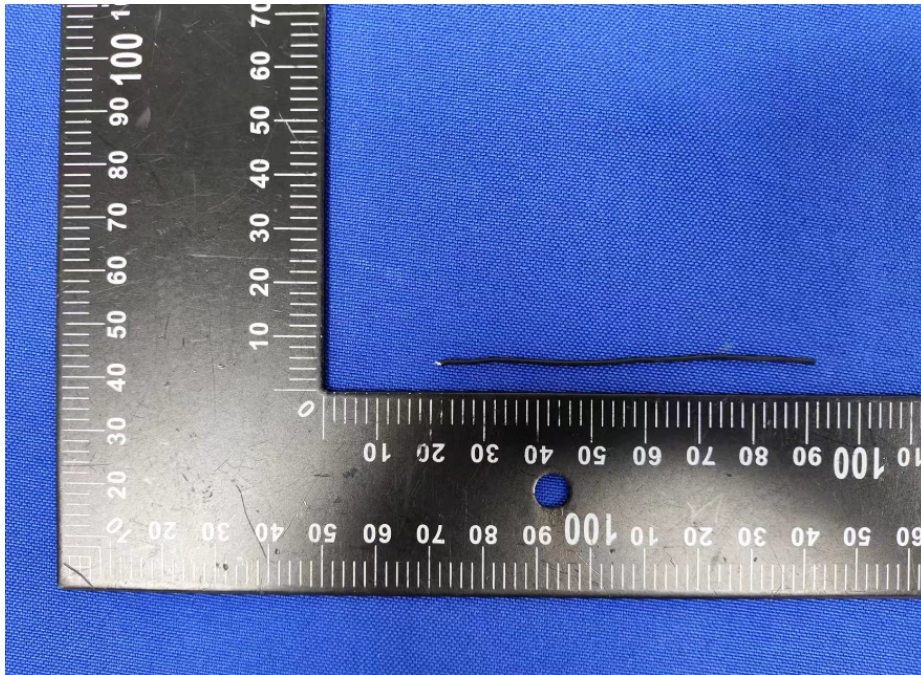
# Antenna report

SPECIFICATIONS	
Frequency (MHz)	2400-2500
Peak Gain (dBi)	-2.79
Average Gain (dBi)	>-4
VSWR	<3.2
Impedance ( $\Omega$ )	50 $\Omega$
Antenna Type	PCB Antenna on board
Polarization	Linear
Manufacture	SHENZHEN FENGYISHULIAN TECHNOLOGY CO., LTD

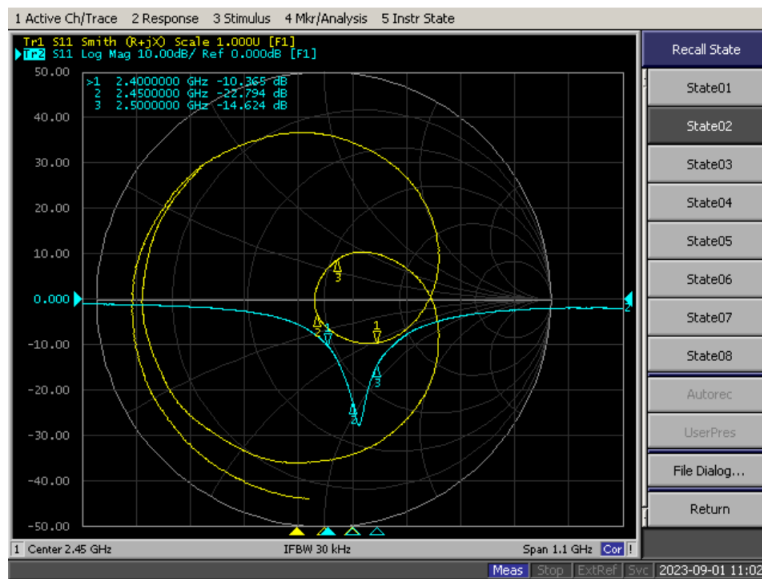
Test environment: China Science and technology darkroom test system



Antenna physical and physical dimensions



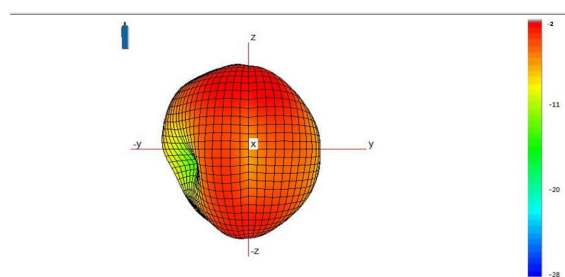
Antenna passive S-parameters:



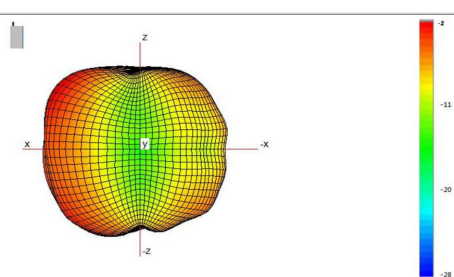
Antenna efficiency and gain

Freq(MHz)	Gain(dB)	Efficiency(dB)	Efficiency(%)
2400	-3.45	-7.57	17.48
2410	-3.25	-7.49	17.81
2420	-3.13	-7.43	18.09
2430	-2.98	-7.31	18.59
2440	-2.85	-7.21	19.02
2450	-2.79	-7.16	19.22
2460	-2.79	-7.14	19.31
2470	-2.85	-7.17	19.20
2480	-2.92	-7.23	18.94
2490	-3.05	-7.31	18.56
2500	-3.12	-7.40	18.21

2400MHz



2450MHz



2500MHz

