

## Features

- Ultra Bright LED's Light up without delay.
- Small size allows to be installed anywhere.
- Hard-coated PC lens protects Light source from sand/dust, rock crawling/mudding.
- Solid die-cast aluminum body for extra durability while doubling as heat sink.
- Solid Colors and Different RGB light effects.

## How to connect the Bluetooth



Open the APP show the Bluetooth connection fails

- please check whether your bluetooth device in a state of electricity.
- please check whether your bluetooth device is within range of a mobile phone bluetooth.
- usually mobile phone bluetooth within 10 meters, different mobile have different distance.
- please refer to the previous bluetooth device connection to reconnect the device.

## How to connect the Bluetooth



Adjust



Music



Tape



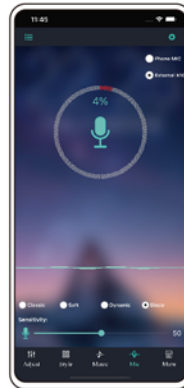
Style



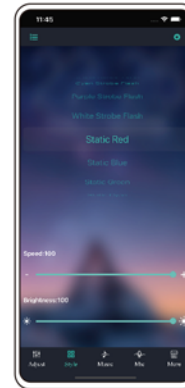
Select any color you want



Music Mode



Voice Mode



Change ColorMode

## Scan code to download APP

Google play

App store



1. Scan the QR of the control box or manual, or search " LotusLanternX " on app store to download the app
2. Turn on your phone bluetooth function, and match the app successfully

# LED ROCK LIGHTS

- Bluetooth and remote control
- Solid colors and different RGB light effects
- Music, Voice and Adjustable lighting Style Mode
- 30-day return policy and 1 year warranty



## Specification

Input Voltage	DC12
Output power	1A×6/1A×8/1A×12
Total brightness level	6 grade/8 grade/12grade
operating tempera	-20°C~50°C
IP Grade	IP67
Control mode	mobile phone+infrared direct contro
Light emitting mode	RGB

## Remote control instructions

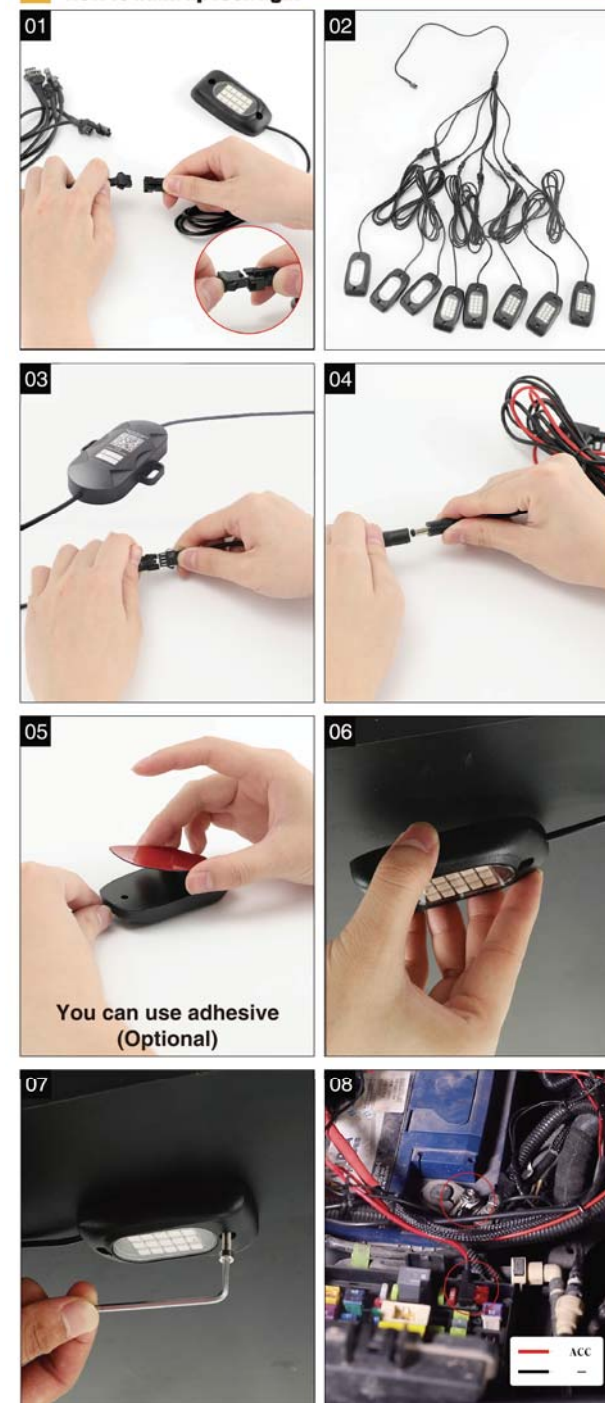


1. Turn up the light
2. Turn down the light
3. Turn on
4. Turn off
5. Static single color
6. Three colors dazzling changes
7. Seven colors dazzling changes
8. Three colors faded in and out
9. Seven colors faded in and out
10. Music mode, colorful fazzling changes

## Packing List

4 pods set				
	x1	x4	x1	x4
6 pods set				
	x1	x6	x12	x12
8 pods set				
	x1	x8	x16	x16
10 pods set				
	x1	x10	x20	x20
12 pods set				
	x1	x12	x24	x24

## How to build up rock light



### FCC Warning Statement

Changes or modifications not expressly approved by the party responsible for compliance could void the user's authority to operate the equipment. This equipment has been tested and found to comply with the limits for a Class B digital device, pursuant to Part 15 of the FCC Rules. These limits are designed to provide reasonable protection against harmful interference in a residential installation. This equipment generates uses and can radiate radio frequency energy and, if not installed and used in accordance with the instructions, may cause harmful interference to radio communications. However, there is no guarantee that interference will not occur in a particular installation. If this equipment does cause harmful interference to radio or television reception, which can be determined by turning the equipment off and on, the user is encouraged to try to correct the interference by one or more of the following measures:

- - Reorient or relocate the receiving antenna.
- - Increase the separation between the equipment and receiver.
- - Connect the equipment into an outlet on a circuit different from that to which the receiver is connected.
- - Consult the dealer or an experienced radio/TV technician for help.

This device complies with part 15 of the FCC Rules. Operation is subject to the following two conditions: (1) This device may not cause harmful interference, and (2) this device must accept any interference received, including interference that may cause undesired operation.

### RF Exposure Statement

To maintain compliance with FCC's RF Exposure guidelines, This equipment should be installed and operated with minimum distance of 20cm the radiator your body. This device and its antenna(s) must not be co-located or operation in conjunction with any other antenna or transmitter.